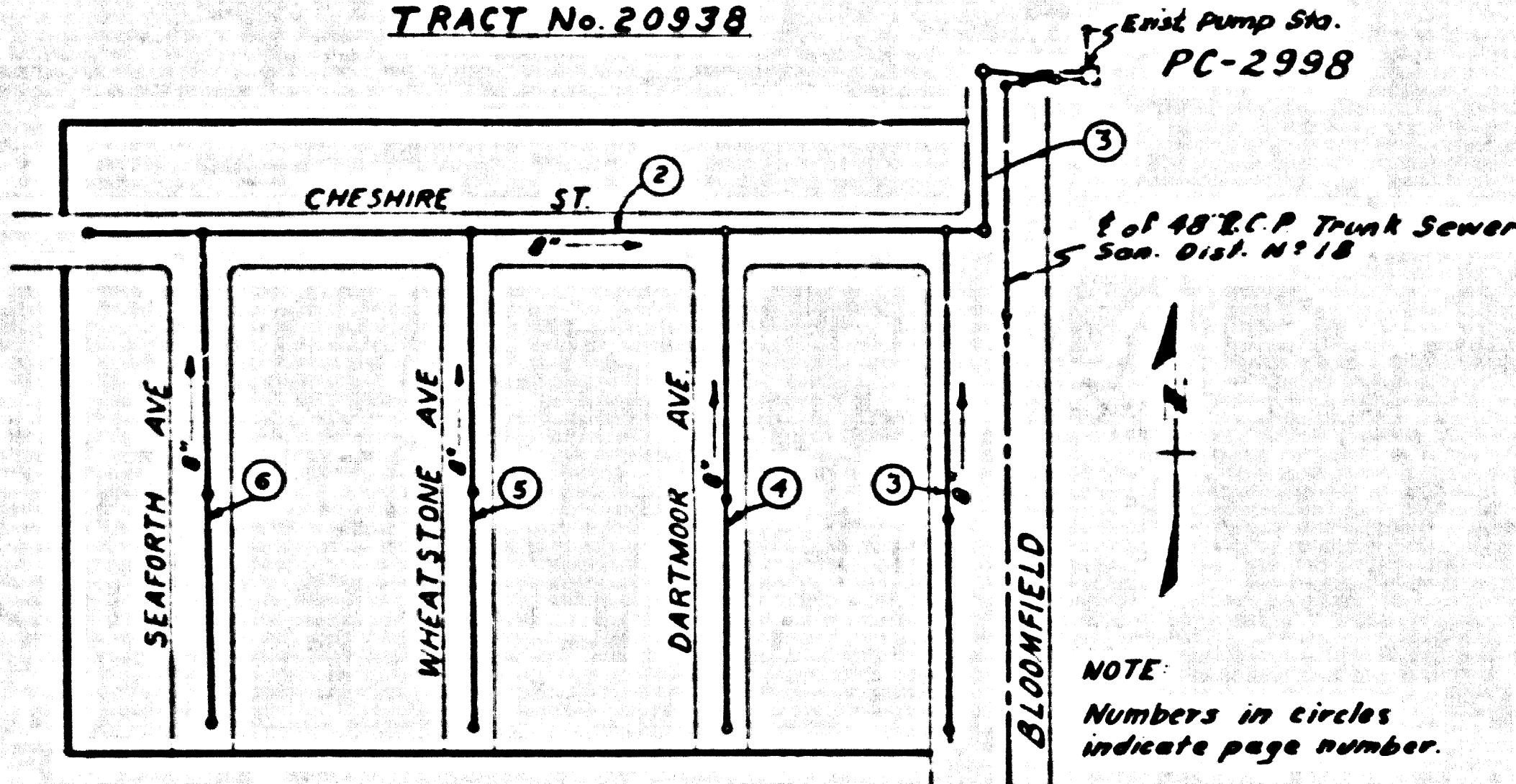


**BENCH MARK**

B.M.S.X 1786 Lead and tack in North curb  
cans. drive 3 30" East of E of Bloomfield Ave.  
at South East corner of Alameda Blvd. and  
Bloomfield Ave. Artime Quad.  
Elev. 71.227 1955 Adj.

PC-5273  
INDEX MAP  
Scale: 1"=200'  
TRACT No. 20938



**NORWALK BLDG. DIST. NO. 406**

- NOTE:  
PROVIDE STAKES ON THE PROPERTY LINE OR PROPERTY LINES PRODUCED AT RIGHT ANGLES TO THE SEWER LINE AT THE CENTER LINE OF EACH MANHOLE.  
NO REPRESENTATIVE OF THE COUNTY ENGINEER WILL SURVEY OR LAYOUT ANY PORTION OF THE WORK.  
THE OWNER OR HIS AUTHORIZED REPRESENTATIVE SHALL FURNISH THE CITY ENGINEER WITH GRADE SHEETS AND STATION FOR ALL HOUSE LATERALS AND V BRANCHES AND SHALL PROVIDE STAKES FOR THEM AT THEIR PROPER LOCATIONS WITH STATIONING PLAINLY MARKED. ANY CHANGE IN LOCATION SHALL BE REQUESTED IN WRITING BY THE OWNER OR HIS REPRESENTATIVE.  
NO REVISIONS SHALL BE MADE IN THESE PLANS WITHOUT THE APPROVAL OF THE CITY ENGINEER.  
USE STANDARD MANHOLE FRAMES AND COVERS, S.A.-117, EXCEPT AS NOTED.  
USE STANDARD STRENGTH PIPE EXCEPT AS NOTED.  
USE CEMENT MORTAR "NEED SEAL" OR "NEED LACK" FOR ALL WITHELD CLAY PIPE JOINTS PER SPEC'S SEC. 16 & 48.  
RESURFACE ALL TRENCH WITHIN PAVED AREA TO MEET L. A. COUNTY ROAD DEPT. OR CALIF. STATE HIGHWAY DEPT. REQUIREMENTS IN ACCORDANCE WITH PERMITS.  
ENCASE FOUR FEET OF SEWER AT POINTS OF INTERFERENCE WITH ACRES, S.A. 172 CASE III.  
HOUSE LATERALS TO BE CONSTRUCTED WITH INVERTS AT PROPERTY LINE 6" BELOW CURB GRADE.  
ALL STRUCTURES SHALL BE BRICK SEWER STRUCTURES, S.A.-194, EXCEPT AS NOTED.  
FOR ALLOWABLE LEAKAGE TEST USE FORMULA NO. 1 PER SPEC., SEC. 24.  
MANHOLE TOPS IN IMPROVED RIGHTS-OF-WAY TO BE 6" ABOVE FINISHED GRADE.  
THE CONTRACTOR SHALL SATISFY HIMSELF OF ALL SUBSTRUCTURES AND SHALL BE RESPONSIBLE FOR THEIR LOCATION.  
THE PRIVATE ENGINEER IS TO FURNISH THE HOUSE LATERAL DEPTH AT THE PROPERTY LINE BELOW THE TOP OF CURB ELEVATION FOR EACH HOUSE LATERAL ON THE GRADE SHEET.  
THE CONTRACTOR SHALL NOTIFY THE CONSTRUCTION AND STORM DRAIN DIVISION BY TELEPHONE, MAILING, OR BY SET FLAG, AT LEAST TWENTY-FOUR HOURS BEFORE STARTING ANY WORK UNDER THIS PROJECT.

NO CHARGE FOR CONNECTION  
Richard 3-16-60

PROFILE ALIGNMENT AND GRADE OF P.C. 5273  
SANITARY SEWERS PAGE 1  
TO BE CONSTRUCTED IN

TRACT No. 20938  
PRIVATE CONTRACT NO. 5273

4 W.S. 33 7  
3 SHEETS, 3 PAGES

SCALE: HORIZ. 1"=40' VERT. 1"=4'  
OCTOBER, 1959

PREPARED IN THE OFFICES OF  
McIntire & Quiros Inc.

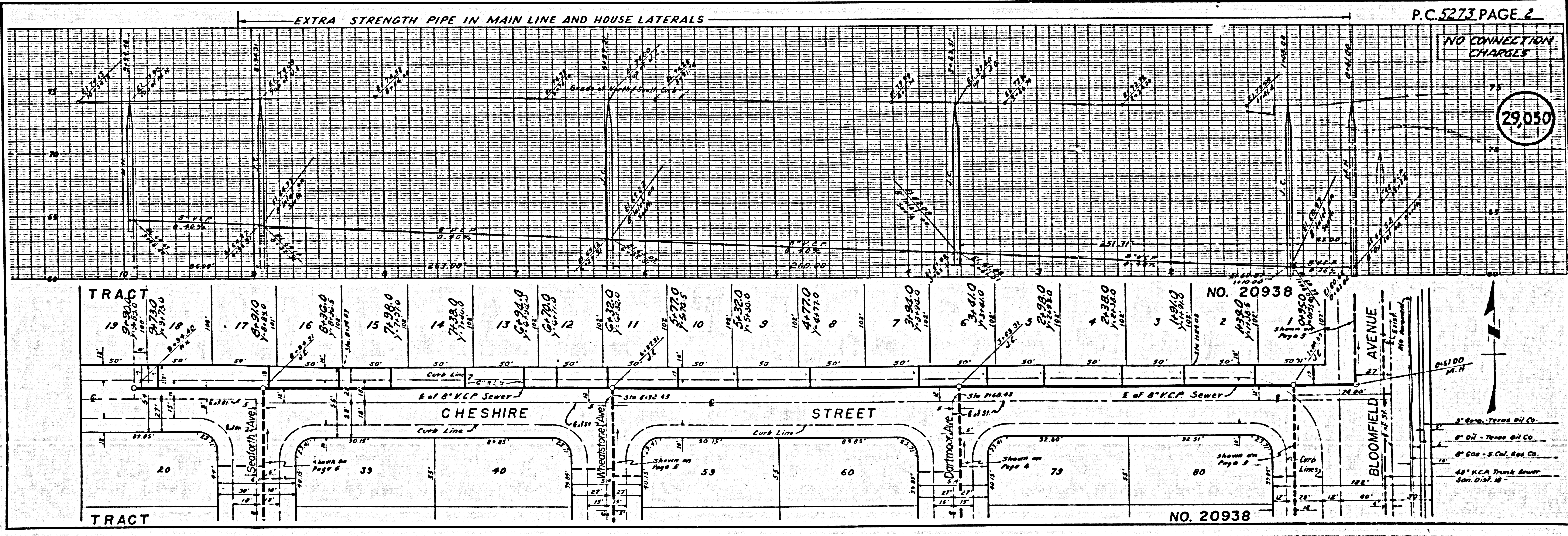
BY: *Alan Quiros* 2/2/60  
REG. C.E. NO. 3754

29,049

FOR LEGEND SEE PLAN NO. S-A-64

NOTE:  
GRADES TO WHICH THIS IMPROVEMENT IS TO BE CONSTRUCTED ARE SHOWN ON PLANS AND PROFILES. GRADE POINTS FOR TOP OF CURB, CENTER LINE OF STREET, OR CENTER LINE OF ALLEY ARE SHOWN BY CIRCLES ON PROFILES. AT ALL POINTS BETWEEN DESIGNATED POINTS THE GRADE SHALL BE ESTABLISHED SO AS TO CONFORM TO A STRAIGHT LINE BETWEEN SAID DESIGNATED POINTS.  
ELEVATIONS ARE IN FEET ABOVE U.S.C. & G.S. DATUM OR MEAN SEA LEVEL.  
THIS DRAWING AND THE DATA HEREON ARE HEREBY MADE A PART OF THE SPECIFICATIONS.  
WORK SHALL BE CONSTRUCTED ACCORDING TO SPECIFICATIONS ON FILE IN THE OFFICE OF THE CITY ENGINEER AND SHALL BE PROSECUTED ONLY IN THE PRESENCE OF THE CITY ENGINEER.  
BEFORE WORK CAN BE STARTED THE CONTRACTOR MUST OBTAIN A PERMIT TO EXCAVATE IN CITY STREETS FROM THE CITY OF NORWALK AND MAKE A DEPOSIT WITH THE CITY OF NORWALK, SUFFICIENT TO COVER THE COST OF RESTORATION, INSPECTION AND RECORD PLANS.  
APPROVAL OF THIS PLAN BY THE CITY OF NORWALK DOES NOT CONSTITUTE A REPRESENTATION AS TO THE ACCURACY OF THE LOCATION OR OF THE EXISTENCE OR NON-EXISTENCE OF ANY UNDERGROUND UTILITY PIPE, OR STRUCTURE WITHIN THE LIMITS OF THIS PROJECT. THIS NOTE APPLIES TO ALL PAGES.  
IF WORK IS TO BE DONE IN A STATE HIGHWAY, A PERMIT MUST BE OBTAINED FROM THE STATE OF CALIFORNIA, DIVISION OF HIGHWAYS, 120 SOUTH SPRING STREET.

CITY OF NORWALK, CALIFORNIA  
APPROVED, JOHN A. LAMAR, CITY ENGINEER  
APPROVED, C.R. COMPTON, CHIEF ENG.  
BY: *C.E. Priddy* ASST. SANITATION ENGINEER  
BY: *W.H. Harrison* CIVIL ENGINEER  
CHECKED BY: *R.T. Kellogg* 3-16-60  
OFFICE OF CITY ENGINEER, R.R. & E. HWY. 11632  
SUBMITTED BY: *John L. Esten* 3-16-60  
LOS ANGELES REGIONAL ENGINEER, REG. CE. NO. 3077



P.C. 5273 PAGE 2

NO CONNECTION CHARGES

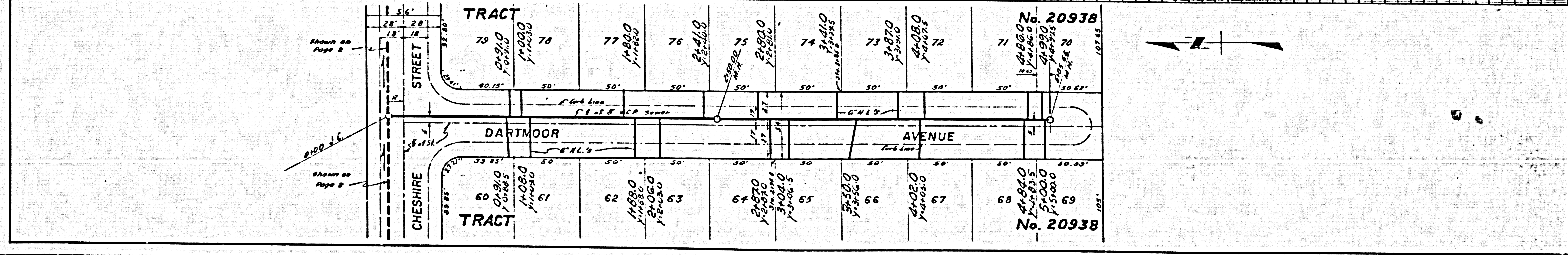
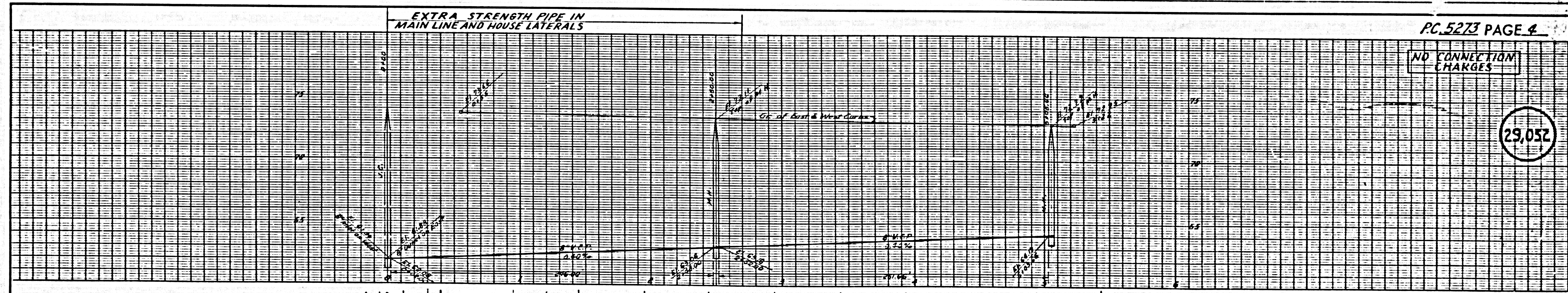
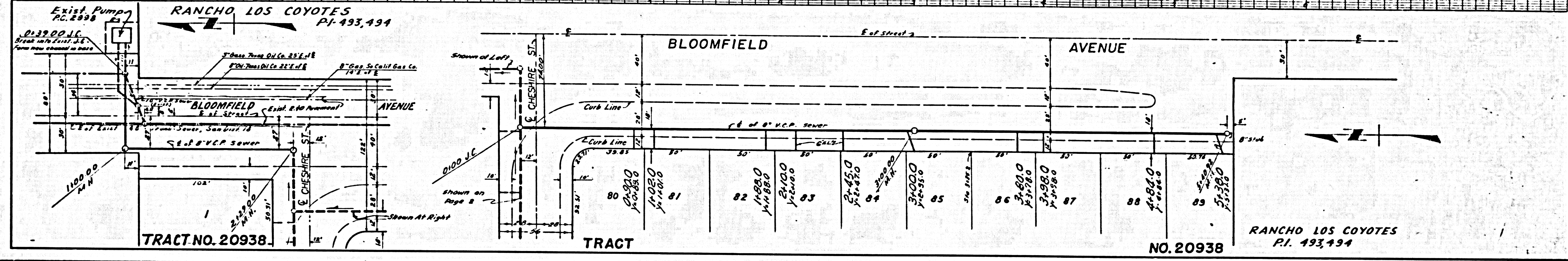
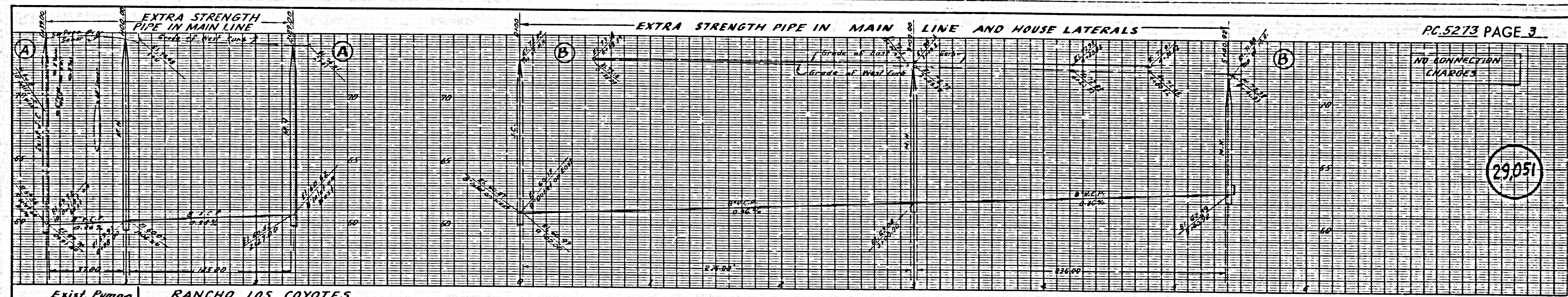
29,050

TRACT NO. 20938

TRACT NO. 20938

- 3" 600 - Teros Oil Co.
- 6" 60 - Teros Oil Co.
- 6" 600 - S. Cal. Gas Co.
- 48" H.C.A. Trunk Sewer San. Dist. 18



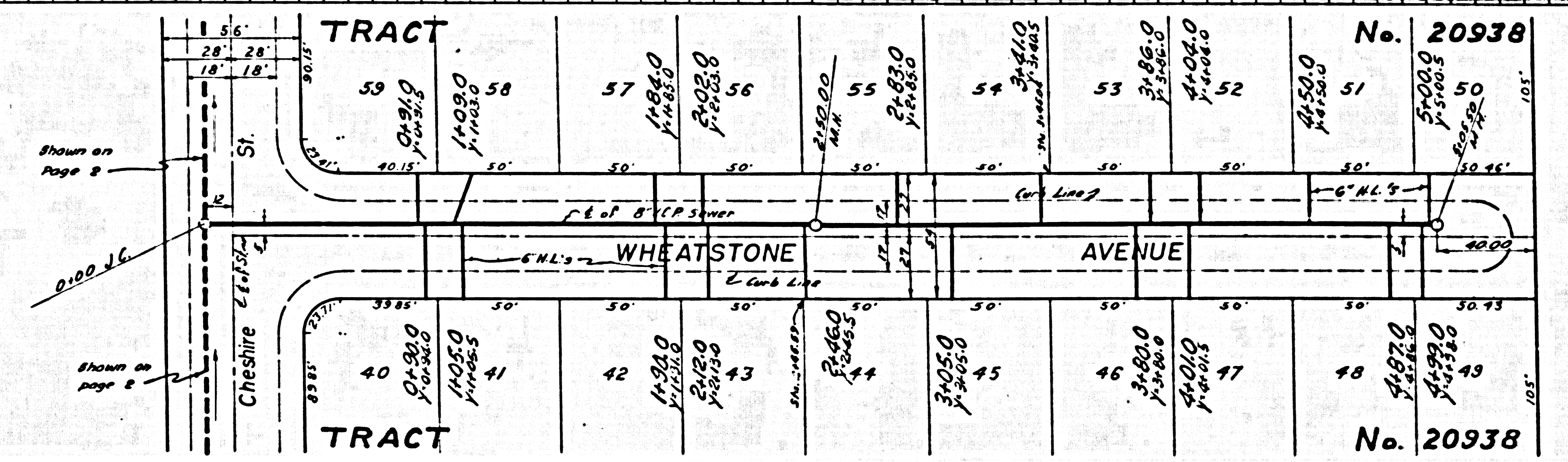
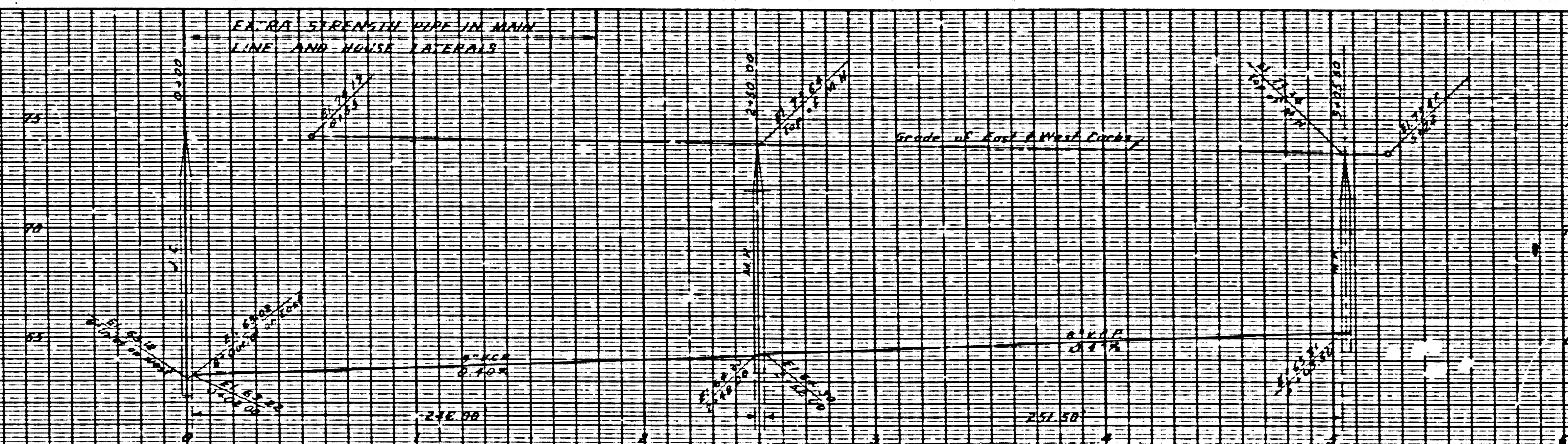


PC 5273 TR 50938



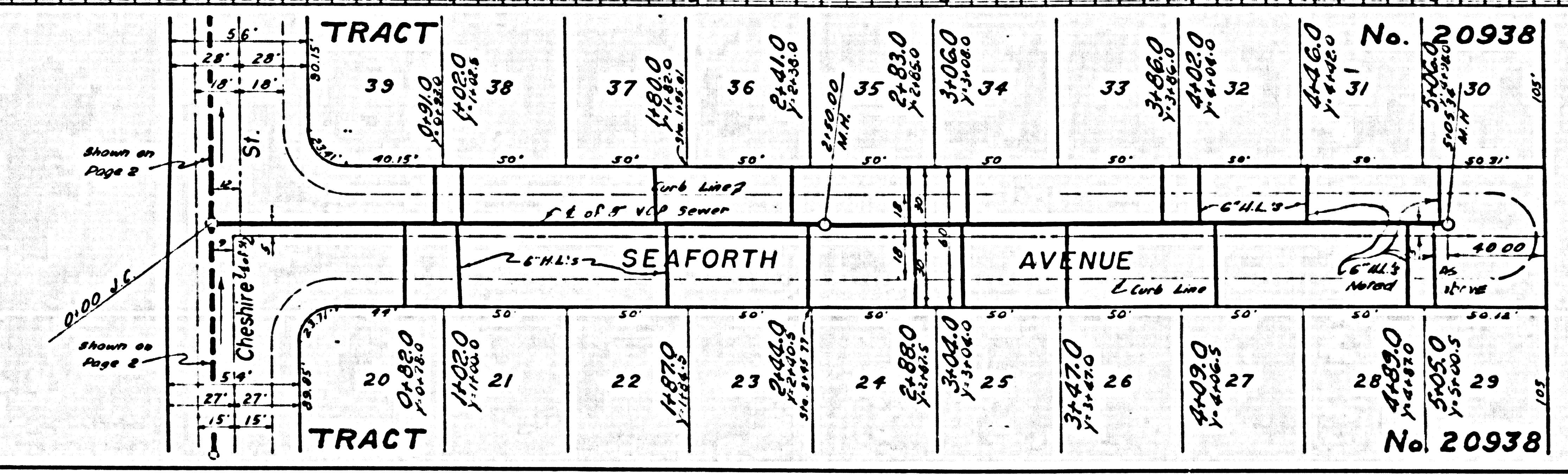
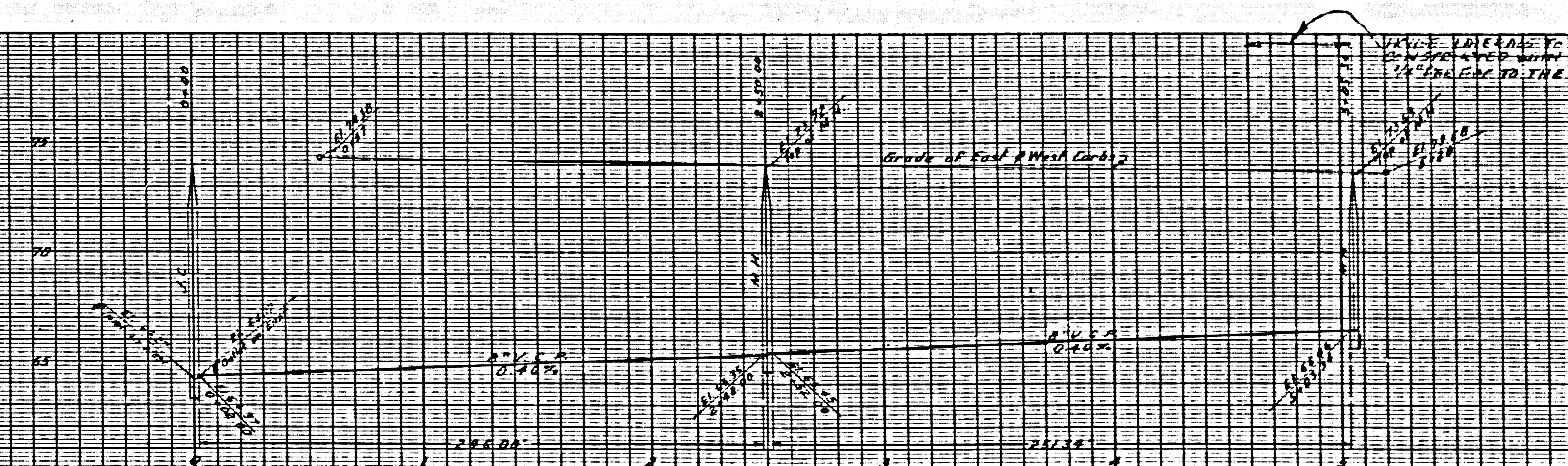
NO CONNECTION CHARGES

29,053



NO CONNECTION CHARGES

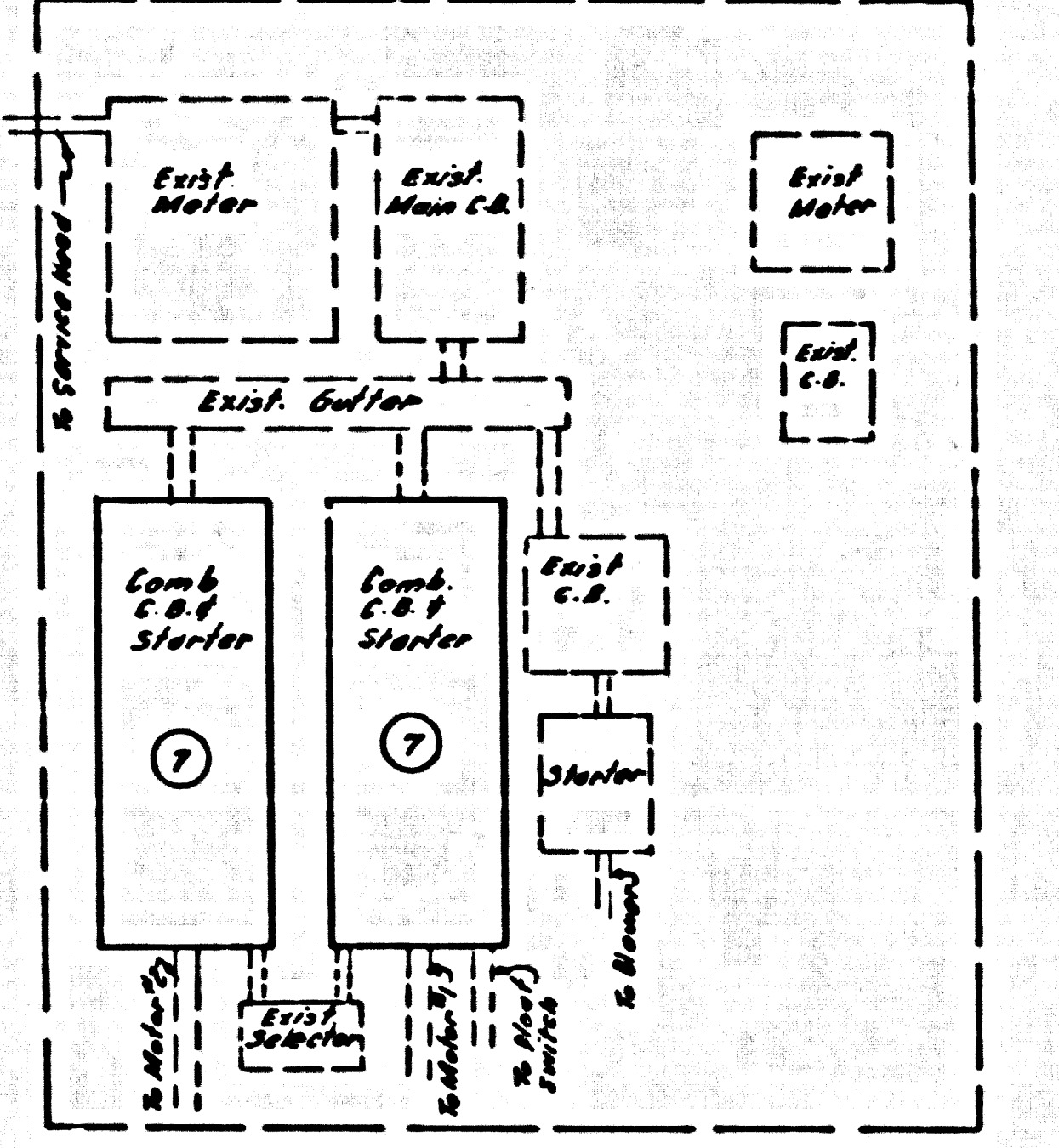
29,054





4 DC 2513

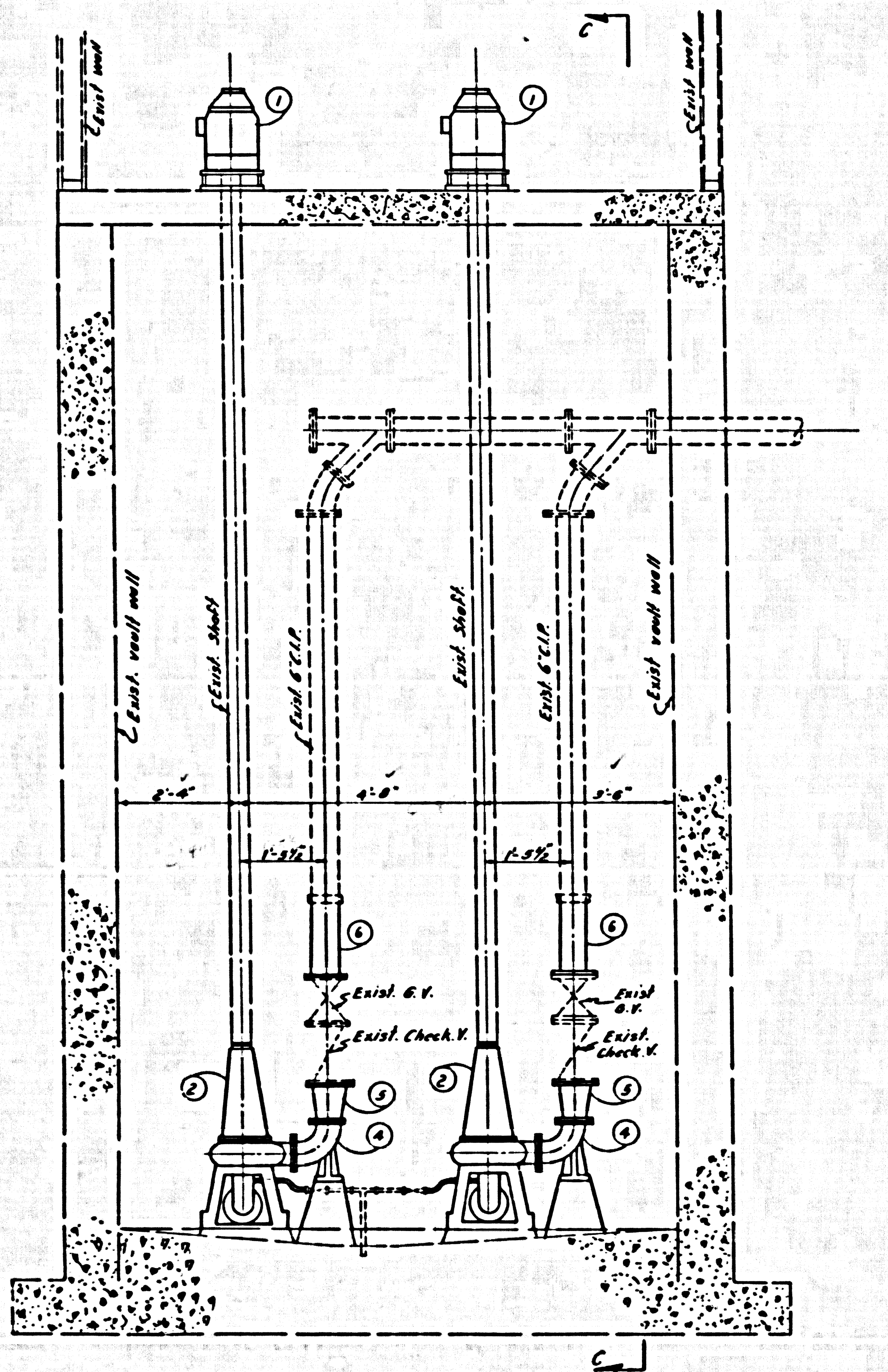
**FINISH PAINTING.**  
1. Paint and paint products to be as manufactured by Inertol Co., Inc.  
2. Painting to be done in accordance with manufacturers recommendations, and to match existing colors.



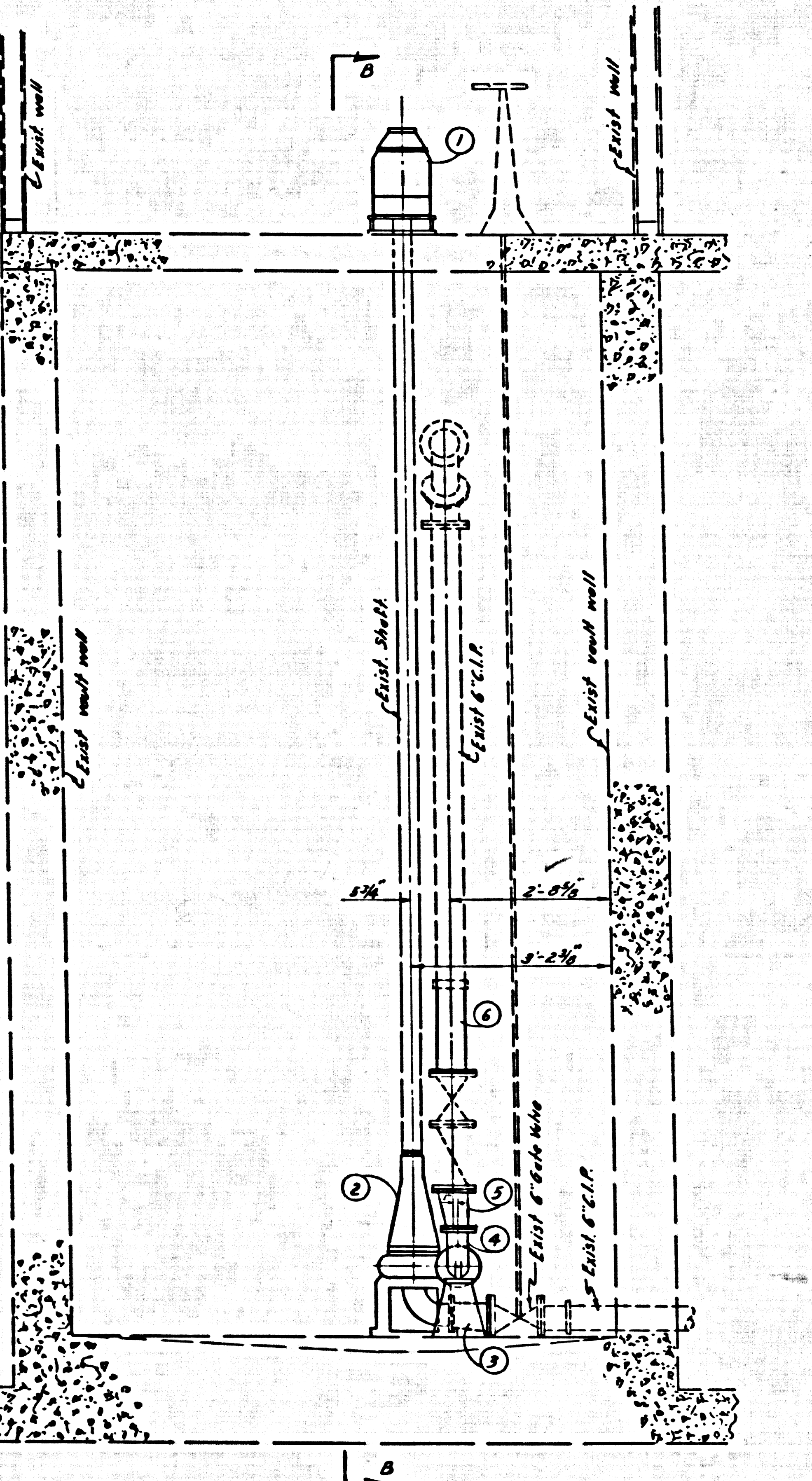
PANEL BOARD LAYOUT  
NO SCALE

NO	REQD	ITEM
1	2	7 1/2 HP Vertical, Hollow Shaft, Squirrel Cage Motor, 1160 R.P.M., 3Ø, 60 Cycle, 220/440 Volt, U.S. Motor or approved equal.
2	2	Peerless Type HCV Vertical Non Clog Pumps, 4x3x3M, 1160 R.P.M., 700 G.P.M., 25 FT. Head.
3	2	6x5" Eccentric Reducer-Flanged, Special-length 82"
4	2	4" 90° Base Elbow-Flanged.
5	2	6x4" Eccentric Reducer-Flanged.
6	2	6" Cast Iron Pipe-length to fit. 125" Class.
7	2	Combination Circuit Breaker and Motor Starter equipped w/selector switch. Note: remodel exist. circuit breaker and starter.

29054-A



SECTION B-B  
SCALE: 1/4" = 1'-0"



SECTION C-C  
SCALE: 1/4" = 1'-0"

- GENERAL NOTES**
- Motors- 2 exist. 3hp motors to be replaced with 7 1/2 hp motors.
  - Pumps- 2 exist pumps to be replaced, remove exist. grout and anchor bolts. Set new anchor bolts and grout, alignment to meet exist. 6" inlet. Remodel shaft to fit new pumps, 6 1/2" to be removed.
  - 4" long radius base elbow and 6x4" reducer to be replaced with 4" base elbow and 6x4" eccentric reducer to meet alignment of exist. outlet. Provide new concrete stand under base elbow.
  - Exist. 6" Gate Valve on inlet to remain in same position, special 6x5" eccentric reducer to take up length between pump inlet flange and 6" gate valve flange. Alignment of pump shaft to remain in present position.
  - Replace #12 wire from Main C.B. to Motors, with #10. Remodel exist. combination circuit breaker and motor starters to handle new motors.
  - Connect sump drain suction line to new pumps.
  - Contractor to keep one pump in operation or provide temporary pumping during remodeling.
  - See pump station plans P.C. 2998 for complete plan of exist. facilities.
  - Contractor must contact Sewer Maintenance Section, County Engineer MA-7-4747, Ext. 461 24 hrs. before start of construction.
  - The Contractor is to supply two copies each of the parts list and the operating and maintenance manuals of all new equipment used in the pump station to the Sewer Maintenance Section, Sanitation Division, Department of County Engineer.
  - A member of the manufacturer's representative must be present while the revisions are being made to the pump station.
  - All cast iron pipe and fittings shall withstand 125 p.s.i. working pressure.
  - All equipment removed from the pumpstation shall be delivered to the City of Norwalk Maintenance yard at 12405 Rosecrans Ave., Norwalk, Calif.

**PRIVATE CONTRACT NO 5273**  
REMODELLING PLANS  
FOR  
**BLOOMFIELD SEWAGE PUMP STATION**  
TRACT NO 20938  
SHEET 4 OF 4 SHEETS  
SCALE AS NOTED W.S. 33 NOV, 1959  
PREPARED IN THE OFFICES OF  
**MCINTIRE AND QUIROS INC.**  
BY *Oliver Quiros* 2/12/60  
REG. C.E. NO 3528

COUNTY OF LOS ANGELES, CALIFORNIA  
APPROVED, JOHN A. LAMBIE, CITY ENGINEER  
APPROVED, C.R. COMPTON, CHIEF ENGINEER  
CO. SAN. DIST. NO 18  
BY *C.E. Thompson* ASST. SANITATION ENGINEER  
OFFICE ENGINEER  
CHECKED BY *R.D. Harding* 3-16-60  
OFFICE OF CITY ENGINEER R.F. 11636