

B.M. S.Y. 3052, A L&BN in S.W. Cor. Culvert headwall ± 30 East of the E. of Normandie Ave. and ± 21' South of the E. of 223rd Street. Elev. 45.550 Gardens Quad 1955

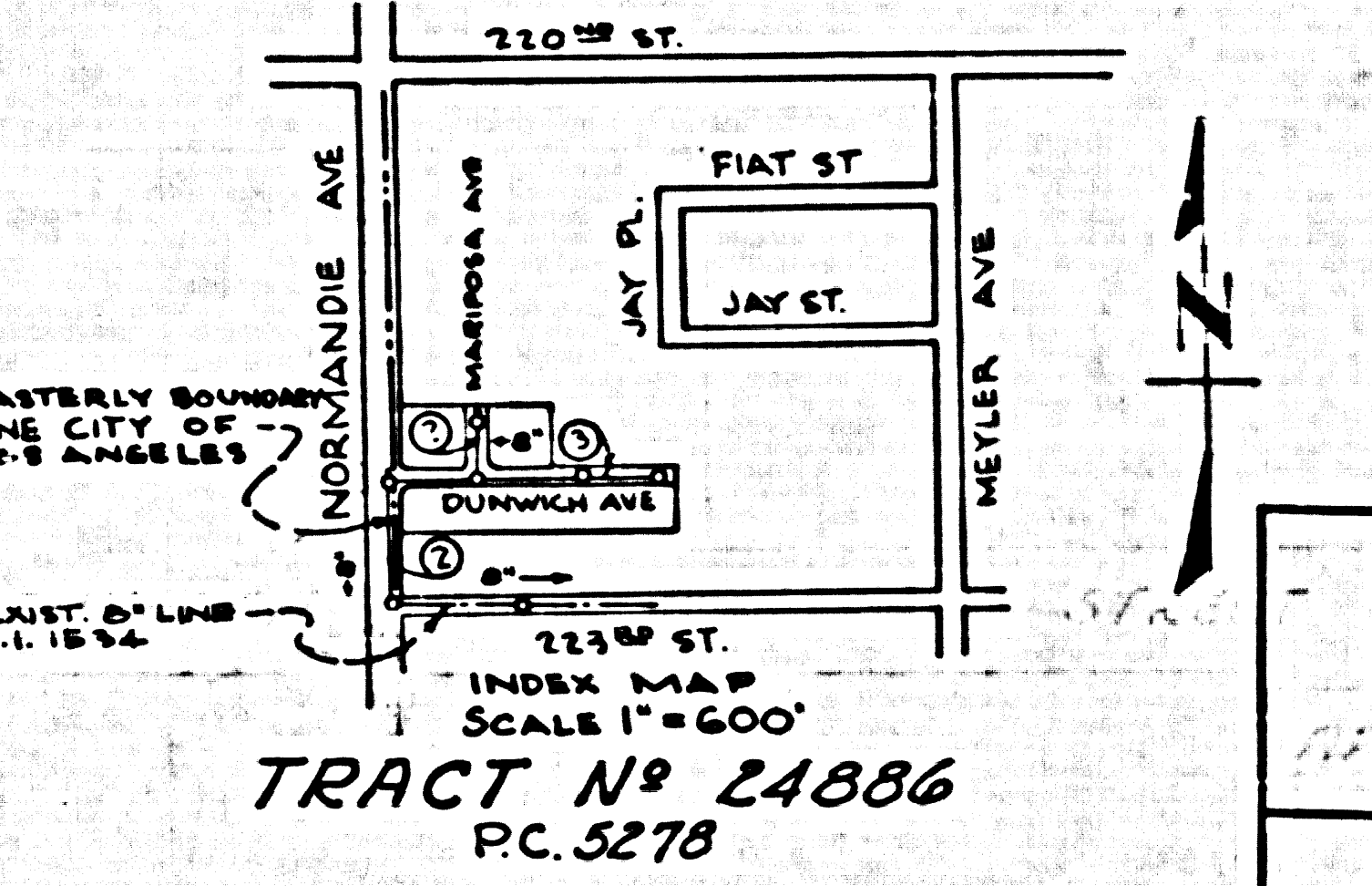
LOMITA BLDG. DIST. NO. 7-1

PROFILE ALIGNMENT AND GRADE OF P.C. 5278
 SANITARY SEWERS PAGE 1
 TO BE CONSTRUCTED IN TRACT No 24886 J.N. 0351.70

- NOTES:
1. PROVIDE STAKES ON THE PROPERTY LINE OR PROPERTY LINES PRODUCED AT RIGHT ANGLES TO THE SEWER LINE AT THE CENTER LINE OF EACH MANHOLE.
 2. NO REPRESENTATIVE OF THE COUNTY ENGINEER WILL SURVEY OR LAY OUT ANY PORTION OF THE WORK.
 3. THE OWNER OR HIS AUTHORIZED REPRESENTATIVE SHALL FURNISH THE COUNTY ENGINEER WITH GRADE SHEETS AND STATIONING FOR ALL HOUSE LATERALS AND T BRANCHES AND SHALL PROVIDE STAKES FOR THEM AT THREE PROPER LOCATIONS WITH STATIONING PLAINLY MARKED. ANY CHANGE IN LOCATION SHALL BE REQUESTED IN WRITING BY THE OWNER OR HIS REPRESENTATIVE.
 4. THE PRIVATE ENGINEER SHALL FURNISH THE HOUSE LATERAL DEPTH AT THE PROPERTY LINE BELOW THE TOP OF CURB ELEVATION FOR EACH HOUSE LATERAL ON THE GRADE SHEET.
 5. NO REVISIONS SHALL BE MADE IN THESE PLANS WITHOUT THE APPROVAL OF THE COUNTY ENGINEER.
 6. USE STANDARD MANHOLE FRAMES AND COVERS, 8-117.
 7. USE STANDARD STRENGTH PIPE EXCEPT AS NOTED.
 8. USE CEMENT MORTAR OR "WEDGE-LOCK" OR "SPRIG-BEAT" FOR ALL V.C.P. JOINTS PER SPEC., SECS. 24 & 42.
 9. RESURFACE ALL BRANCH WITHIN PAVED AREA TO MEET L.A. COUNTY ST. & HIGHWAY DEPT. OR CALIF. STATE HIGHWAY REQUIREMENTS IN ACCORDANCE WITH PERMITS.
 10. INCASE FOUR FEET OF SEWER AT POINTS OF INTERFERENCE WITH POLES, CASE NO. 8-172.
 11. HOUSE LATERALS TO BE CONSTRUCTED WITH INVERTS AT PROPERTY LINE 6" FEET BELOW CURB GRADE EXCEPT AS NOTED.
 12. ALL STRUCTURES SHALL BE BRICK SEWER STRUCTURES, 8-194.
 13. FOR ALLOWABLE LEAKAGE TEST USE FORMULA NO. 1, SPEC., SEC. 54.
 14. MANHOLE TOPS IN UNIMPROVED RIGHTS-OF-WAY TO BE SIX INCHES ABOVE FINISHED GRADE.
 15. THE CONTRACTOR SHALL NOTIFY THE CONSTRUCTION & STREAM DRAIN DIVISION BY TELEPHONE, MADISON 5-4747, EXT. 342, AT LEAST TWENTY-FOUR HOURS BEFORE STARTING ANY WORK UNDER THIS CONTRACT.
 16. Standard Specifications dated Jan. 1, 1960 apply in the construction of this project.
 17. Contractor must obtain permit from City of Los Angeles before excavating in city streets.

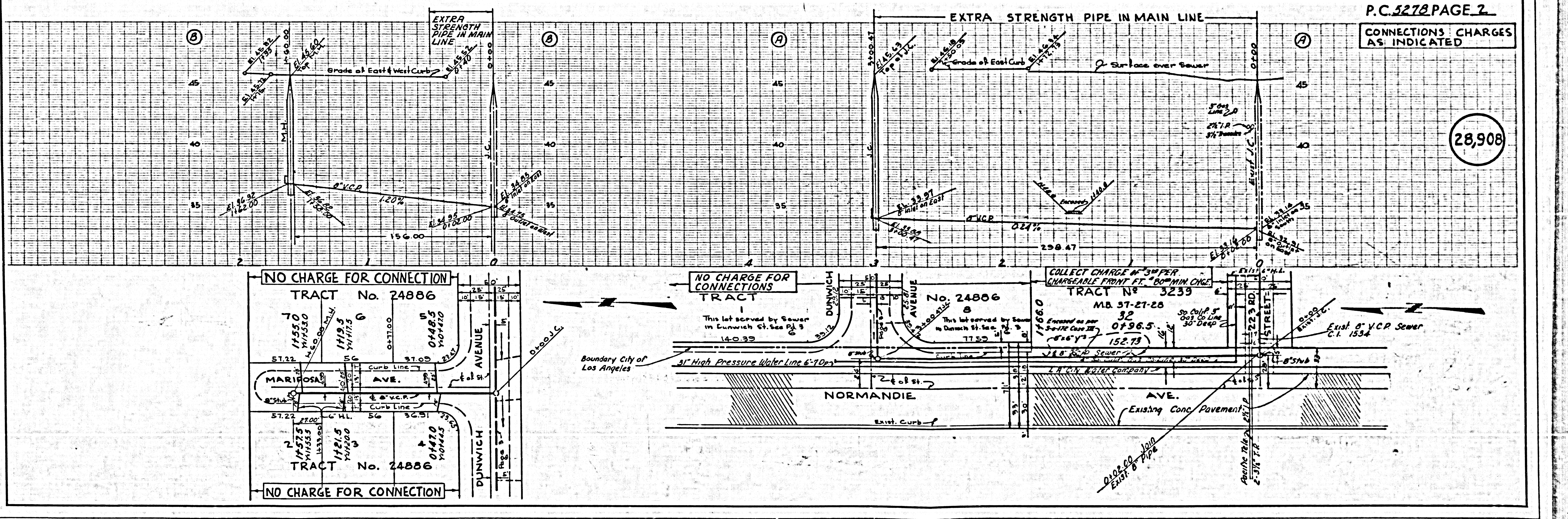
PRIVATE CONTRACT NO. 5278
 W.S. 28
 2 SHEETS, 3 PAGES
 SCALE: VERT. 1"=4' HORIZ. 1"=40'
 SEPT. 1959
 PREPARED IN THE OFFICES OF
WESTERN ENGINEERING & CONSTRUCTION COMPANY
 BY *John H. Orian*
 REG. C. E. NO. 3913
 FOR LEGEND SEE PLAN NO. S-A-64

COLLECT CHARGES AS INDICATED
L. Curtis 1-5-60



SUBMITTED *December 31, 1958*
 BY *R. E. Orian*
 DIVISION OF DISTRICT ENGINEER
W. J. Winter
 ASSISTANT DEPUTY ENGINEER DESIGN
 APPROVED *June 31, 1959*
Paul W. Bander
 CITY ENGINEER

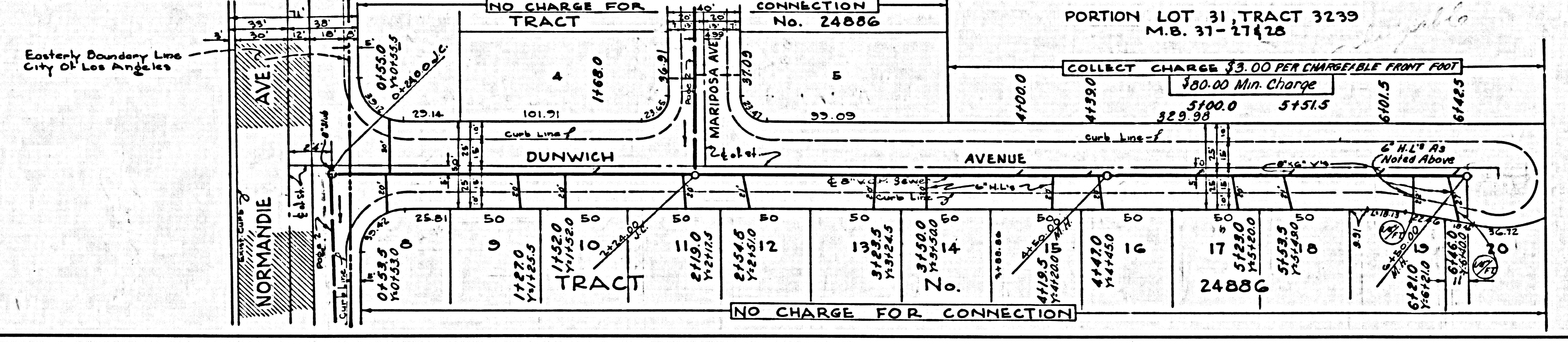
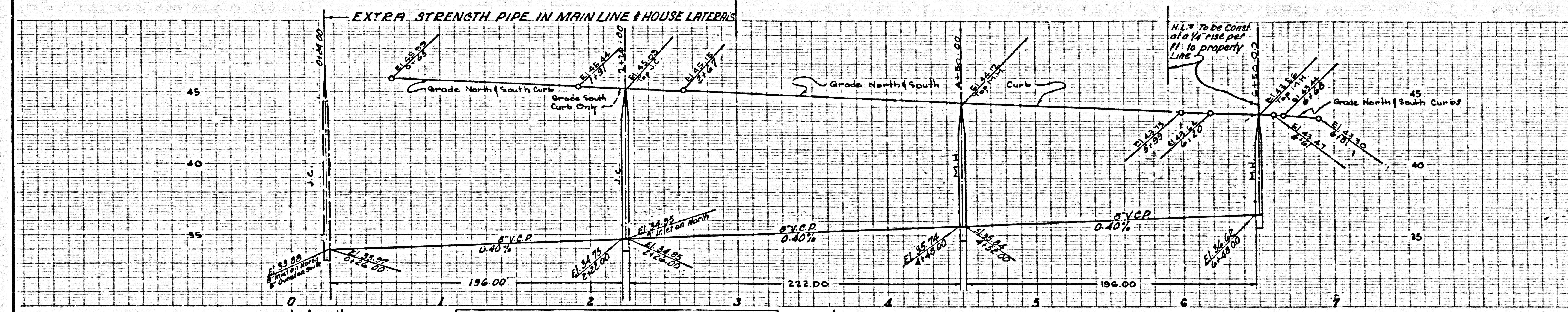
NOTES:
 GRADES TO WHICH THE IMPROVEMENT IS TO BE CONSTRUCTED ARE SHOWN ON PLANS AND PROFILE. GRADE POINTS FOR TOP OF CURBS, CENTER LINE OF STREETS, OR CENTER LINE OF ALLEYS ARE SHOWN BY CIRCLES ON PROFILES. AT ALL POINTS BETWEEN DESIGNATED POINTS THE GRADE SHALL BE ESTABLISHED SO AS TO CONFORM TO A STRAIGHT LINE DRAWN BETWEEN SAID DESIGNATED POINTS.
 ELEVATIONS ARE IN FEET ABOVE U.S.C. & G.S. MEAN SEVER BY TIME OF 1929.
 THIS DRAWING AND THE DATA HEREON ARE HEREBY MADE A PART OF THE SPECIFICATIONS.
 WORK SHALL BE CONSTRUCTED ACCORDING TO SPECIFICATIONS ON FILE IN THE OFFICE OF THE COUNTY ENGINEER AND SHALL BE INSPECTED ONLY IN THE PRESENCE OF THE COUNTY ENGINEER.
 BEFORE WORK CAN BE STARTED, THE CONTRACTOR MUST OBTAIN A PERMIT TO EXCAVATE IN COUNTY STREETS FROM THE L.A. COUNTY ROAD DEPT., DISTRICT OFFICE NO. 3, AND PAY A FEE FOR COUNTY ENGINEER, ROOM 524 PARK AVENUE, BAKING, \$35.00. ROADWAY APPROPRIATION TO COVER THE COST OF CONSTRUCTION INSPECTION AND RECORD PLANS.
 APPROVAL OF THIS PLAN BY THE COUNTY OF LOS ANGELES DOES NOT CONSTITUTE A REPRESENTATION AS TO THE ACCURACY OF THE LOCATION OF OR THE EXISTENCE OR NON-EXISTENCE OF ANY UNDERGROUND UTILITIES, PIPE, OR STRUCTURE WITHIN THE LIMITS OF THE PROJECT. THE NOTE APPLIES TO ALL PAGES.
 IF WORK IS TO BE DONE IN A STATE HIGHWAY, A PERMIT MUST BE OBTAINED FROM THE STATE OF CALIFORNIA, DIVISION OF HIGHWAYS, 128 SOUTH SPRING STREET.
 COUNTY OF LOS ANGELES, CALIFORNIA
 APPROVED, JOHN A. LAMBE, COUNTY ENGINEER
 APPROVED, *C. E. Camp*, CHIEF ENGINEER
 BY *C. E. Camp* ASST. SANITATION ENGINEER
 BY *J. S. Latham* OFFICE ENGINEER
 CHECKED BY *W. C. Wilde* 1-25-60
 OFFICE OF COUNTY ENGINEER, REG. C. E. NO. 7456
 Submitted By: *Jack C. Lavinia*
 PALOS VERDES: CENTINELA VALLEY REGIONAL ENGINEER



P.C. 5278 PAGE 2
 CONNECTIONS CHARGES AS INDICATED
 28,908

CONNECTIONS CHARGES AS INDICATED

28,909



Easterly Boundary Line City of Los Angeles