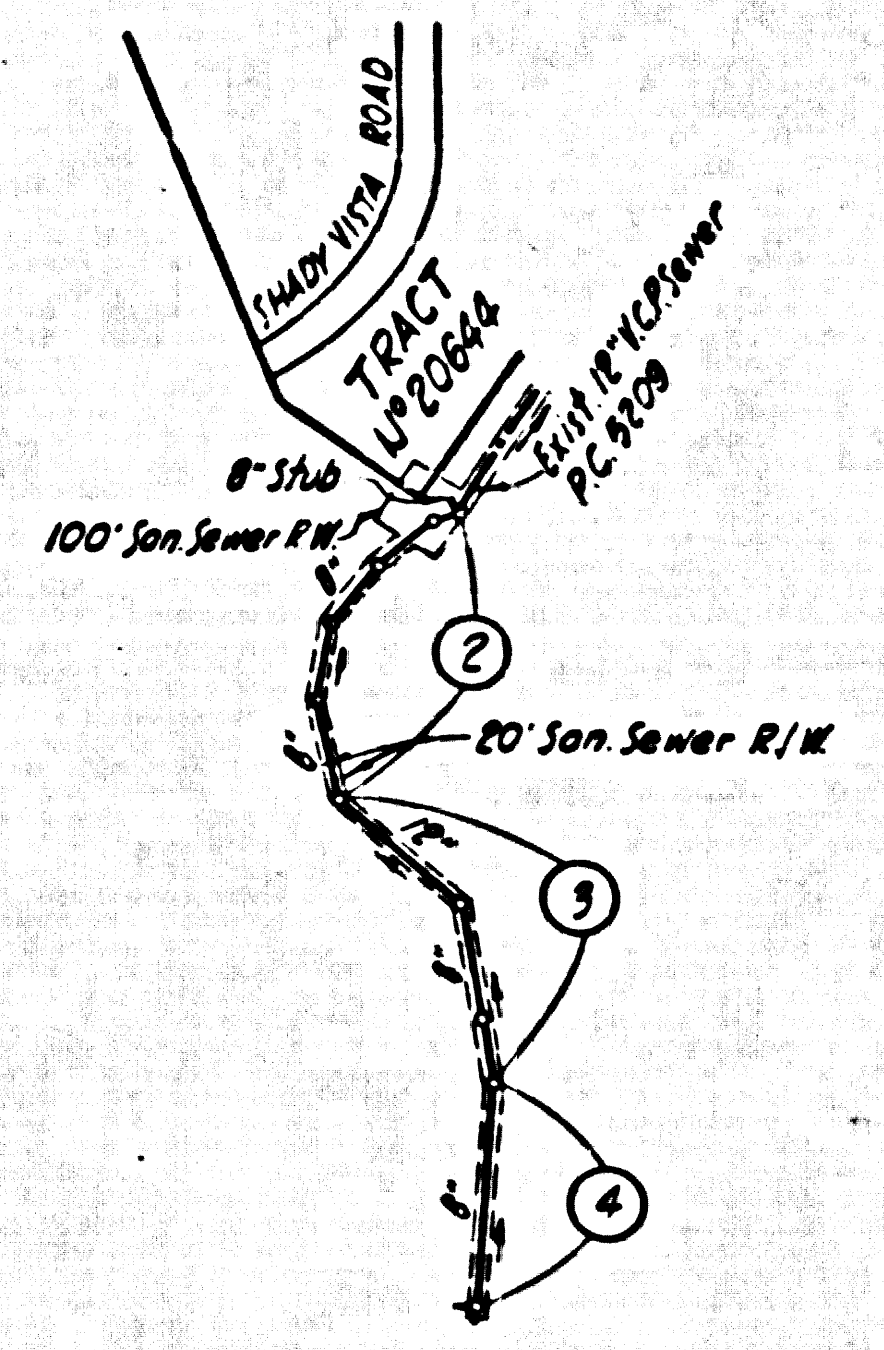


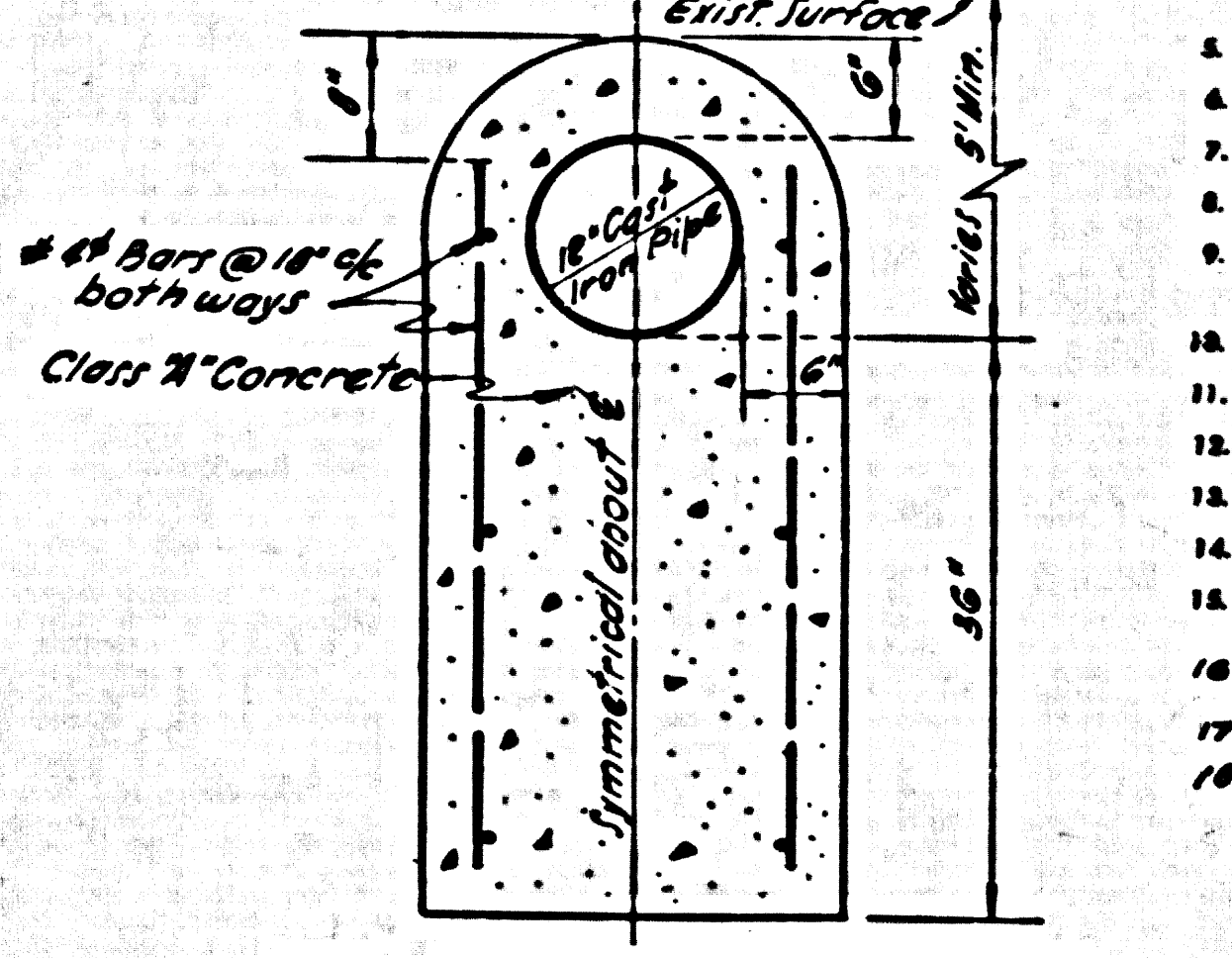
B.M. COUNTY SURVEYORS B.M. U.S.G.S. 570
 D.M. STAMPED Q-706-1946 SET FLUSH WITH
 GROUND 45.2' N. OF E. OF PALOS VERDES
 DRIVE NORTH 474.2' OF E. OF NARRAGANSETT
 AV. CL. 355.510 F.B. 1357-8

NOTE:
 COUNTY SURVEYORS B.M. 36-E, COUNTY PRECISE
 SURVEY 1953 ADJ. ELEV. 355.583 ADD 0065
 TO ALL ELEVATIONS SHOWN HEREON TO AGREE
 WITH 1953 ADJUSTMENT.



INDEX MAP
 P.C. 5279
 SCALE: 1" = 400'

REVISED GRADES TO CONFORM WITH
 CONSTRUCTED BENCH BETWEEN STA. 68+51.50 & STR 55+18.00
 Approved By: *C. F. ...* 4-25-60
 OFFICE OF COUNTY ENGINEER, R.E. N. 11636



Note: Approval is hereby given contingent
 upon a field investigation of the completed
 sewer and all grading operations related
 thereto by the County Engineer or his
 representative.

Approved by *C. F. ...*
 Asst. Division Engineer

NO CHARGE FOR
 CONNECTIONS
Arthur B. Ready

LOMITA BLDG. DIST. NO. 7.1

- NOTE:
1. PROVIDE STAKES ON THE PROPERTY LINE OR PROPERTY LINES PRODUCED AT RIGHT ANGLES TO THE SEWER LINE AT THE CENTER LINE OF EACH MANHOLE.
 2. NO REPRESENTATIVE OF THE COUNTY ENGINEER WILL SURVEY OR LAY OUT ANY PORTION OF THE WORK.
 3. THE OWNER OR HIS AUTHORIZED REPRESENTATIVE SHALL FURNISH THE COUNTY ENGINEER WITH QUALITY SHEETS AND STATIONING FOR ALL HOUSE LATERALS AND Y BRANCHES AND SHALL PROVIDE STAKES FOR THEM AT THEIR PROPER LOCATIONS WITH STATIONING PLAINLY MARKED. ANY CHANGE IN LOCATION SHALL BE REQUESTED IN WRITING BY THE OWNER OR HIS REPRESENTATIVE.
 4. THE PRIVATE ENGINEER SHALL FURNISH THE HOUSE LATERAL DEPTH AT THE PROPERTY LINE BELOW THE TOP OF CURB ELEVATION FOR EACH HOUSE LATERAL ON THE GRADE SHEET.
 5. NO REVISIONS SHALL BE MADE IN THESE PLANS WITHOUT THE APPROVAL OF THE COUNTY ENGINEER.
 6. USE STANDARD MANHOLE FRAMES AND COVERS, S-117, EXCEPT AS NOTED.
 7. USE STANDARD STRENGTH PIPE EXCEPT AS NOTED.
 8. USE CEMENT MORTAR OR "WEDGE-LOCK" OR "SPRIG-SEAL" FOR ALL V.C.P. JOINTS PER SPECS., SECS. 24 & 25.
 9. RESURFACE ALL FRENCH WITHIN PAVED AREA TO MEET L.A. COUNTY ROAD DEPT. OR CALIF. STATE HIGHWAY REQUIREMENTS IN ACCORDANCE WITH PERMITS.
 10. ENCASE FOUR FEET OF SEWER AT POINTS OF INTERFERENCE WITH POLES, CASE III, S-172.
 11. HOUSE LATERALS TO BE CONSTRUCTED WITH INVERTS AT PROPERTY LINE $\frac{1}{2}$ FEET BELOW CURB GRADE EXCEPT AS NOTED.
 12. ALL STRUCTURES SHALL BE BRICK SEWER STRUCTURES, S-104, EXCEPT AS NOTED.
 13. FOR ALLOWABLE LEAKAGE TEST USE FORMULA NO. 1, SPECS., SEC. 24.
 14. MANHOLE TOPS IN UNIMPROVED RIGHTS-OF-WAY TO BE SIX INCHES ABOVE FINISHED GRADE.
 15. THE CONTRACTOR SHALL NOTIFY THE CONSTRUCTION & STORM DRAIN DIVISION BY TELEPHONE, MADISON 9-89, EXT. 362, AT LEAST TWENTY-FOUR HOURS BEFORE STATING ANY WORK UNDER THIS CONTRACT.
 16. STANDARD SPECIFICATIONS DATED JULY 1, 1960 APPLY IN THE CONSTRUCTION OF THIS PROJECT.
 17. ENCASE SEWER WHEN DEPTH OF COVER IS 4' OR LESS, PER S-A-172, CASE III.
 18. MINIMUM DISTANCE FROM MANHOLE TOP TO INVERT TO BE 6'.

ENGINEERING SERVICE CORPORATION
 1127 W. WASHINGTON BLVD.
 LOS ANGELES 15, CALIF. A. 9-7281

REVISIONS		TRACED BY	W. B.		
		DESIG'D BY	C. M. B.		
		CK'D BY	A. A. M.		
		SUBMITTED			
SUB STRUCTURES OK'D					
W. O. NO.	DWG. NO.	DATE	SCALE	L. B.	P. B.
6177-77		AUGUST 1959	AS SHOWN	837-870	574

PROFILE ALIGNMENT AND GRADE OF P.C. 5279
 SANITARY SEWERS PAGE 1
 TO BE CONSTRUCTED IN J.N. 0351.71
 EXTENSION OF EASEMENT WESTERLY
 OF PALOS VERDES DRIVE NORTH

PRIVATE CONTRACT NO. 5279

W.S. 27
 2 SHEETS, 6 PAGES

SCALE: VERT. 1" = 4' HORIZ. 1" = 40' October, 1959

PREPARED IN THE OFFICES OF
 ENGINEERING SERVICE CORPORATION
 P. J. ...
 REG. C. E. NO. 1822

29,157

FOR LEGEND SEE PLAN NO. S-A-64

NOTE:
 GRADES TO WHICH THIS IMPROVEMENT IS TO BE CONSTRUCTED AND SHOWN ON PLANS AND PROFILES, GRADE POINTS FOR TOP OF CURBS, CENTER LINE OF STREETS, OR CENTER LINE OF ALLEYS ARE SHOWN BY CIRCLES ON PROFILES. AT ALL POINTS BETWEEN DESIGNATED POINTS THE GRADE SHALL BE ESTABLISHED SO AS TO CONFORM TO A STRAIGHT LINE DRAWN BETWEEN SAID DESIGNATED POINTS.
 ELEVATIONS ARE IN FEET ABOVE U.S.C. & G.S. SEA LEVEL DATUM OF 1929.
 THIS DRAWING AND THE DATA HEREON ARE HEREBY MADE A PART OF THE SPECIFICATIONS.
 WORK SHALL BE CONSTRUCTED ACCORDING TO SPECIFICATIONS ON FILE IN THE OFFICE OF THE COUNTY ENGINEER AND SHALL BE PROSECUTED ONLY IN THE PRESENCE OF THE COUNTY ENGINEER.
 BEFORE WORK CAN BE STARTED, THE CONTRACTOR MUST OBTAIN A PERMIT TO EXCAVATE IN COUNTY STREETS FROM THE COUNTY ROAD DEPT., DISTRICT OFFICE NO. 7, AND PAY A FEE TO THE COUNTY ENGINEER ROOM 324 FARM ARCADE BUILDING, 328 SO. BROADWAY SUPERIOR TO COVER THE COST OF CONSTRUCTION INSPECTION AND RECORD PLANS.
 APPROVAL OF THIS PLAN BY THE COUNTY OF LOS ANGELES DOES NOT CONSTITUTE A REPRESENTATION AS TO THE ACCURACY OF THE LOCATION OF OR THE EXISTENCE OR NON-EXISTENCE OF ANY UNDERGROUND UTILITY PIPE, OR STRUCTURE WITHIN THE LIMITS OF THIS PROJECT. THIS NOTE APPLIES TO ALL PAGES.
 THE WORK IS TO BE DONE ON A STATE HIGHWAY, A PERMIT MUST BE OBTAINED FROM THE STATE OF CALIFORNIA, DIVISION OF HIGHWAYS, THE SOUTH BRIDGE STREET.

COUNTY OF LOS ANGELES, CALIFORNIA

APPROVED, JOHN A. LAMBE, COUNTY ENGINEER APPROVED, C. E. COMPTON, CHIEF ENGINEER

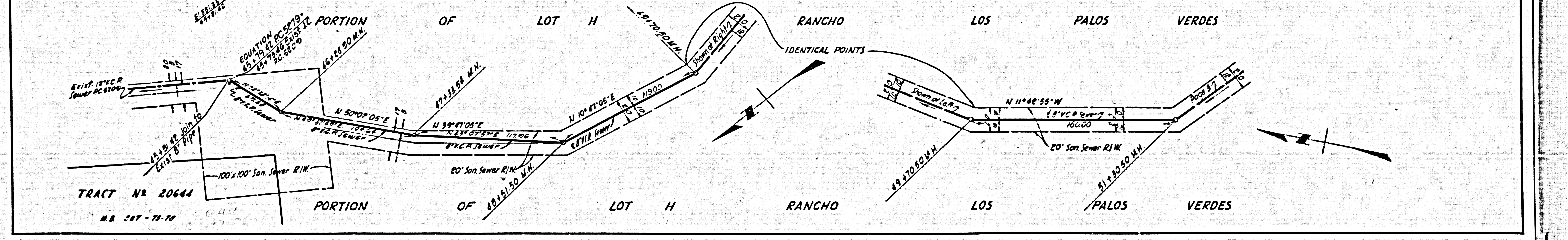
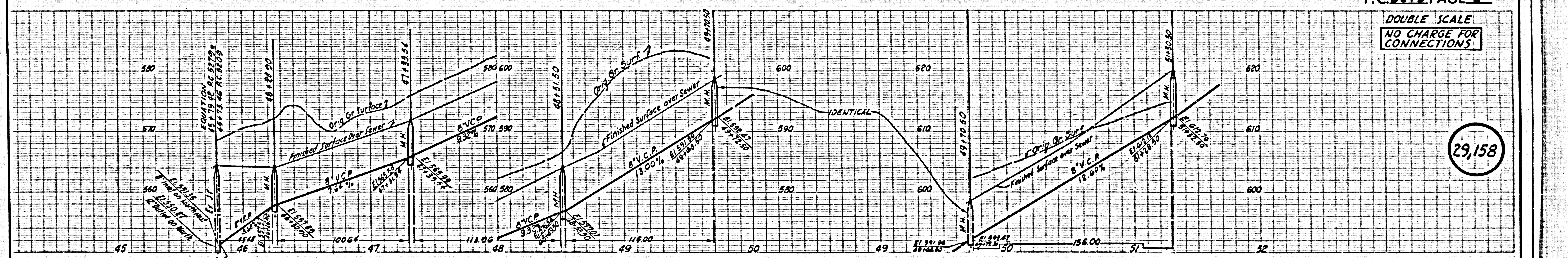
BY *C. F. ...* ASST. SANITARY ENGINEER BY *C. E. ...* CHIEF ENGINEER

CHECKED BY *J. K. ...* OFFICE OF COUNTY ENGINEER, REG. C. E. NO. 9406

SUBMITTED BY *Jack C. ...*

P.C. 5279 PAGE 2

DOUBLE SCALE
 NO CHARGE FOR
 CONNECTIONS



29,158

