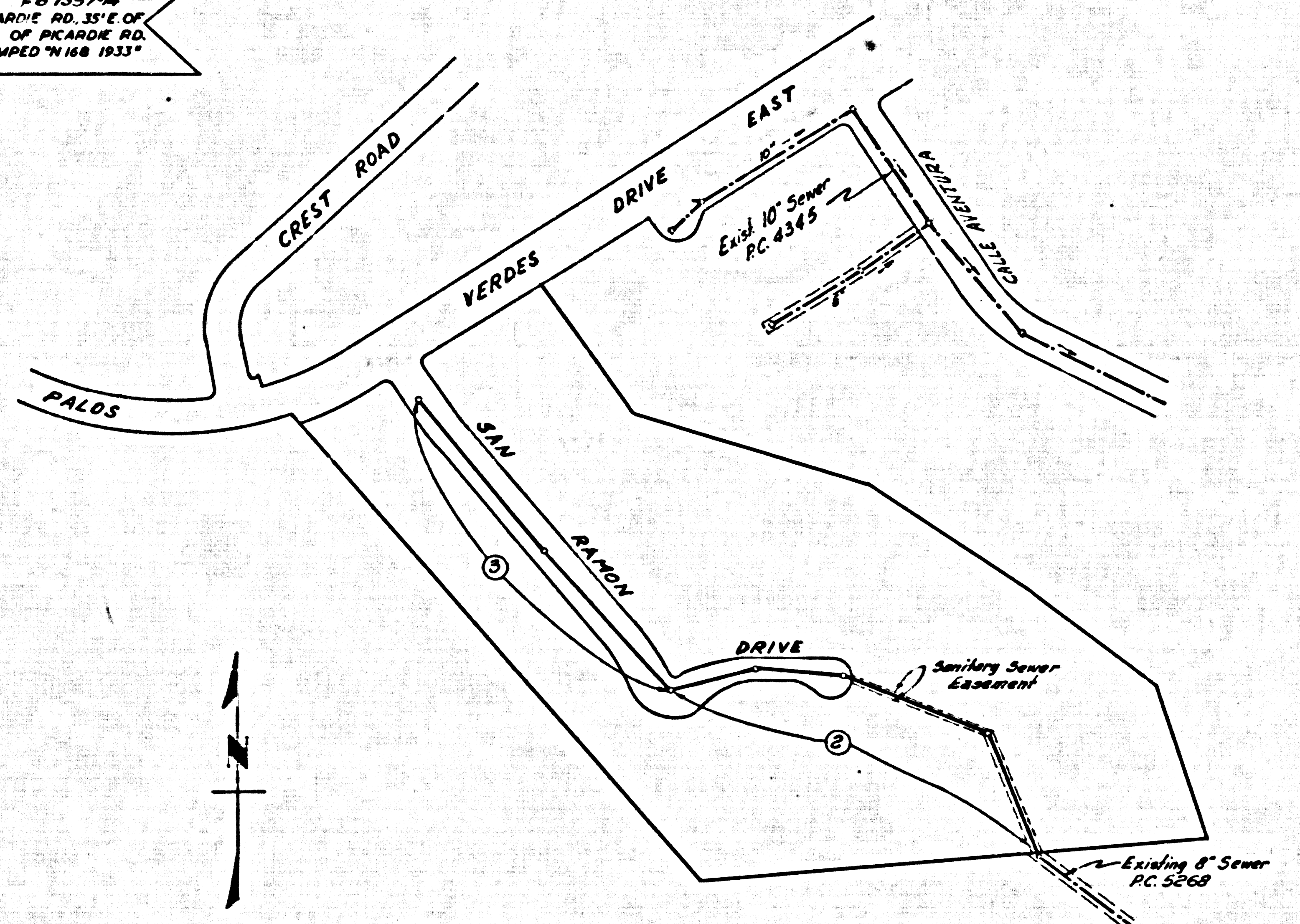


U.S.C. & G.S.M. N-168 (U.S. 2876) P.B. 1357-14
 PALOS VERDES DRIVE EAST AND PICARDIE RD. 33'E OF
 C/L OF SAID DRIVE AND 34' S. OF C/L OF PICARDIE RD.
 SET IN A CONC. POST A STD. DISK STAMPED "168 1933"



KEY MAP
 TRACT No. 25051
 SCALE: 1" = 200'

LOMITA BLDG. DIST. NO. 7.1

- NOTES:
1. PROVIDE STAKES ON THE PROPERTY LINE OR PROPERTY LINES PRODUCED AT RIGHT ANGLE TO THE SEWER LINE AT THE CENTER LINE OF EACH MANHOLE.
 2. NO REPRESENTATIVE OF THE COUNTY ENGINEER WILL SURVEY OR LAY OUT ANY PORTION OF THE WORK.
 3. THE OWNER OR HIS AUTHORIZED REPRESENTATIVE SHALL FURNISH THE COUNTY ENGINEER WITH GRADE SHEETS AND STATIONING FOR ALL HOUSE LATERALS AND Y BRANCHES AND SHALL PROVIDE STAKES FOR THESE AT THEIR PROPER LOCATIONS WITH STATIONING PLAINLY MARKED. ANY CHANGE IN LOCATION SHALL BE REQUESTED IN WRITING BY THE OWNER OR HIS REPRESENTATIVE.
 4. THE PRIVATE ENGINEER SHALL FURNISH THE HOUSE LATERAL DEPTH AT THE PROPERTY LINE BELOW THE TOP OF CURB ELEVATION FOR EACH HOUSE LATERAL ON THE GRADE SHEET.
 5. NO REVISIONS SHALL BE MADE IN THESE PLANS WITHOUT THE APPROVAL OF THE COUNTY ENGINEER.
 6. USE STANDARD MANHOLE FRAMES AND COVERS, 6-117, EXCEPT AS NOTED.
 7. USE STANDARD STRENGTH PIPE EXCEPT AS NOTED.
 8. USE CEMENT MORTAR OR "WEDGE-LOCK" ON "SPRUE-BEAN" FOR ALL V.C.P. JOINTS PER SPEC. SECT. 5, 6 & 8.
 9. RESURFACE ALL TRENCHES WITHIN PAVED AREA TO MEET L.A. COUNTY ROAD DEPT. OR CALIF. STATE HIGHWAY DIVISIONS IN ACCORDANCE WITH PERMITS.
 10. ENCASE FOUR FEET OF SEWER AT POINTS OF INTERFERENCE WITH POLES, CASE 10, 5-172.
 11. HOUSE LATERALS TO BE CONSTRUCTED WITH 1/2" RISE PER FOOT TO PROPERTY LINE.
 12. ALL STRUCTURES SHALL BE BRICK SEWER STRUCTURES, 5-194, EXCEPT AS NOTED.
 13. FOR ALLOWABLE LEAKAGE TEST USE FORMULA NO. 1, SPEC. SEC. 54.
 14. MANHOLE TOPS IN UNIMPROVED RIGHTS-OF-WAY TO BE 18" INCHES ABOVE FINISHED GRADE.
 15. THE CONTRACTOR SHALL NOTIFY THE CONSTRUCTION & STORM DRAIN DIVISION BY TELEPHONE, MANHOLE 7-27, EXT. 343, AT LEAST TWENTY-FOUR HOURS BEFORE STARTING ANY WORK UNDER THIS CONTRACT.
 16. STANDARD SPECIFICATIONS DATED JAN. 4, 1960 APPLY IN THE CONSTRUCTION OF THIS PROJECT.

REVISION
 1. Page 2. - Decreased depth of sewer from Sta. 0+39.08 to Sta. 0+45.00
 Page 3. - Decreased depth of sewer from Sta. 0+45.00 to Sta. 1+05.00
 Palos Verdes Mountains Valley Regional Engineers
 Approved by Jack C. Garosung Date 1-27-60

NO CHARGE FOR CONNECTIONS
 L. Austin 10-20-59

PROFILE ALIGNMENT AND GRADE OF P.C. 5283
 SANITARY SEWERS PAGE 1
 TO BE CONSTRUCTED IN J.N. 0351.75
 TRACT No. 25051

PRIVATE CONTRACT NO. 5283

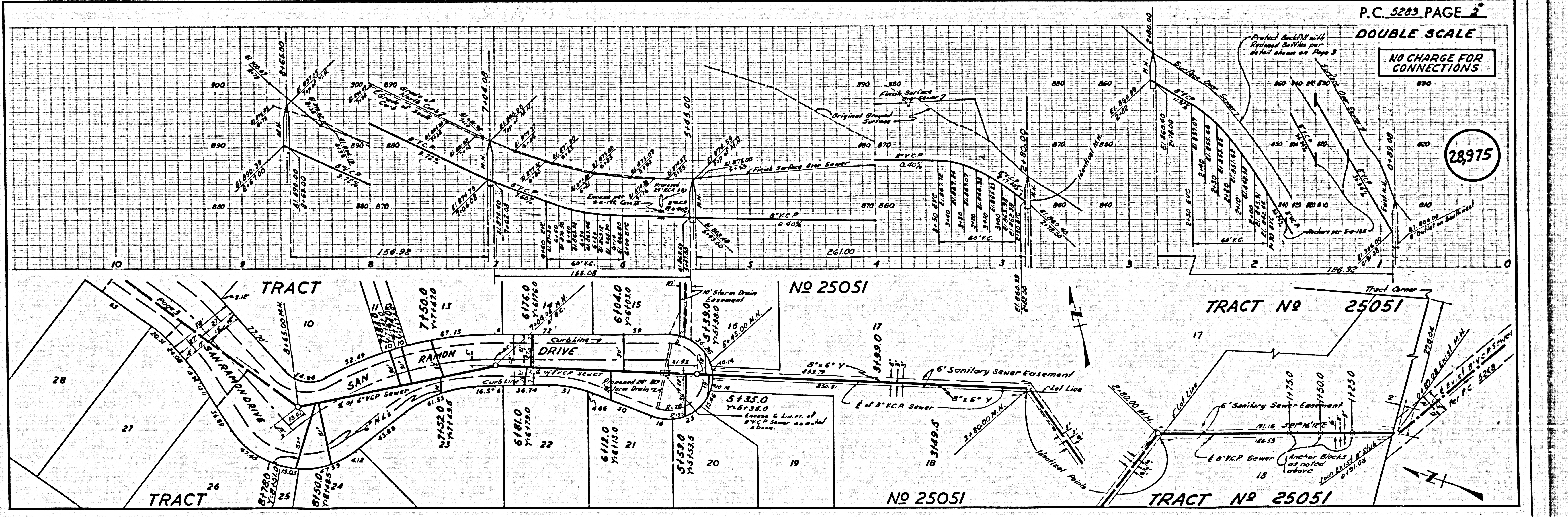
W.S. 27
 2 SHEETS, 3 PAGES
 SCALE: HORIZ. 1" = 40' VERT. 1" = 4'
 AUGUST, 1959
 PREPARED IN THE OFFICES OF

DEVELOPMENT CONSULTANTS INC.
 ENGINEERING DIVISION
 BY: [Signature] REG. C. E. NO. 3123
 FOR LEGEND SEE PLAN NO. S-A-64

28974

NOTES:
 GRADES TO WHICH THIS IMPROVEMENT IS TO BE CONSTRUCTED ARE SHOWN ON PLANS AND PROFILE. GRADE POINTS FOR TOP OF CURBS, CENTER LINE OF STREETS, OR CENTER LINE OF ALLEYS ARE SHOWN BY CIRCLES ON PROFILES. AT ALL POINTS BETWEEN INDICATED POINTS THE GRADE SHALL BE ESTABLISHED SO AS TO CONFORM TO A STRAIGHT LINE DRAWN BETWEEN SAID INDICATED POINTS.
 ELEVATIONS ARE IN FEET ABOVE U.S.C. & G.S. MEAN SEA LEVEL DATUM OF 1929.
 THIS DRAWING AND THE DATA HEREON ARE HEREBY MADE A PART OF THE SPECIFICATIONS.
 WORK SHALL BE CONSTRUCTED ACCORDING TO SPECIFICATIONS ON FILE IN THE OFFICE OF THE COUNTY ENGINEER AND SHALL BE PROSECUTED ONLY IN THE PRESENCE OF THE COUNTY ENGINEER.
 BEFORE WORK CAN BE STARTED, THE CONTRACTOR MUST OBTAIN A PERMIT TO EXCAVATE IN COUNTY STREETS FROM THE L.A. COUNTY ROAD DEPT., DISTRICT OFFICE NO. 1, AND MAKE A DEPOSIT WITH THE COUNTY ENGINEER, ROOM 324 PAM AMERICAN BUILDING, 331 50 BROADWAY SUFFICIENT TO COVER THE COST OF CONSTRUCTION INSPECTION AND RECORD PLANS.
 APPROVAL OF THIS PLAN BY THE COUNTY OF LOS ANGELES DOES NOT CONSTITUTE A REPRESENTATION AS TO THE ACCURACY OF THE LOCATION OR THE EXISTENCE OR NON-EXISTENCE OF ANY UNDERGROUND UTILITY PIPE, OR STRUCTURE WITHIN THE LIMITS OF THIS PROJECT. THIS NOTE APPLIES TO ALL PAGES.
 IF WORK IS TO BE DONE IN A STATE HIGHWAY, A PERMIT MUST BE OBTAINED FROM THE STATE OF CALIFORNIA, DIVISION OF HIGHWAYS, 128 SOUTH BRIDGE STREET.

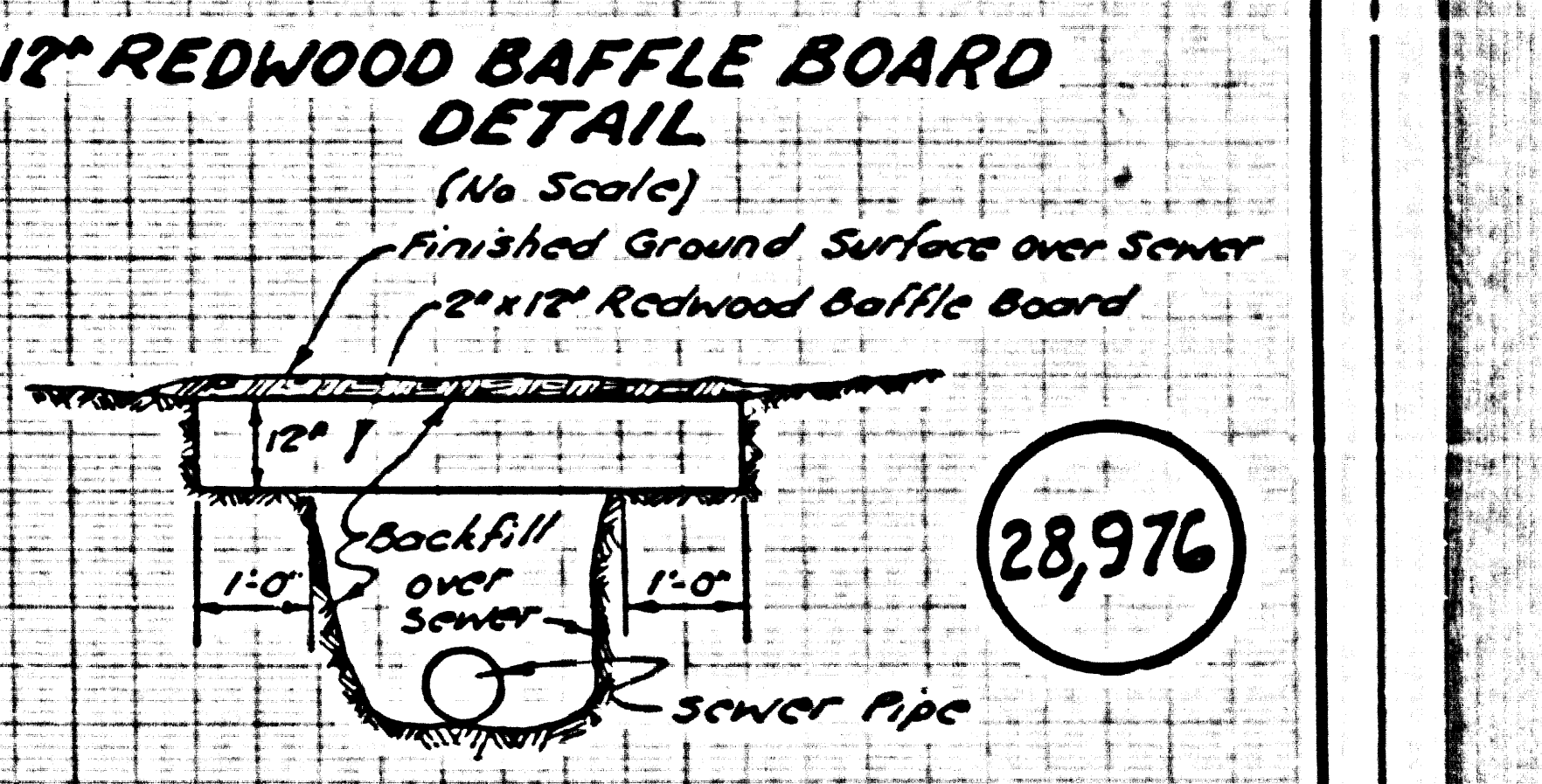
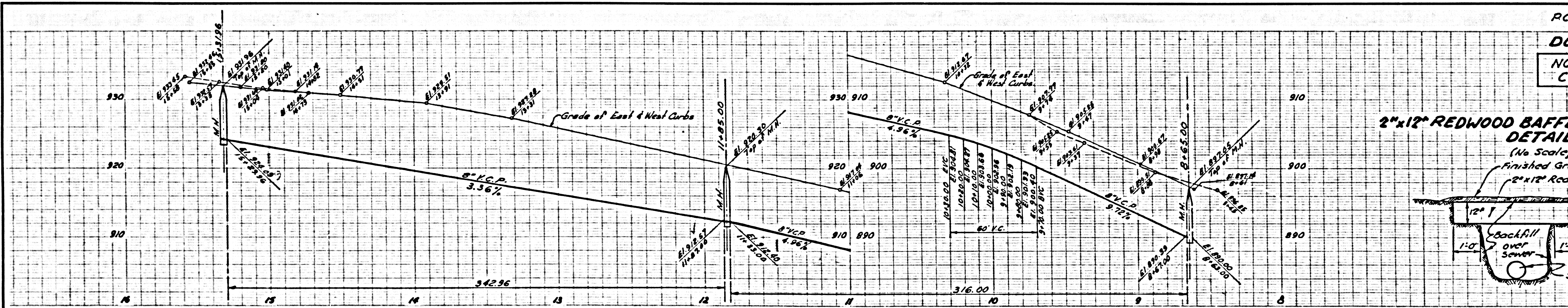
COUNTY OF LOS ANGELES, CALIFORNIA
 APPROVED, JOHN A. LAMBE, COUNTY ENGINEER
 APPROVED, C.R. COMPTON, CHIEF ENGINEER
 CO. SEAL NO. 1000
 BY: [Signature] ASST. SANITATION ENGINEER
 BY: [Signature] OFFICE ENGINEER
 CHECKED BY: [Signature] 10-21-59
 OFFICE OF COUNTY ENGINEER, REG. C. E. NO. 3486



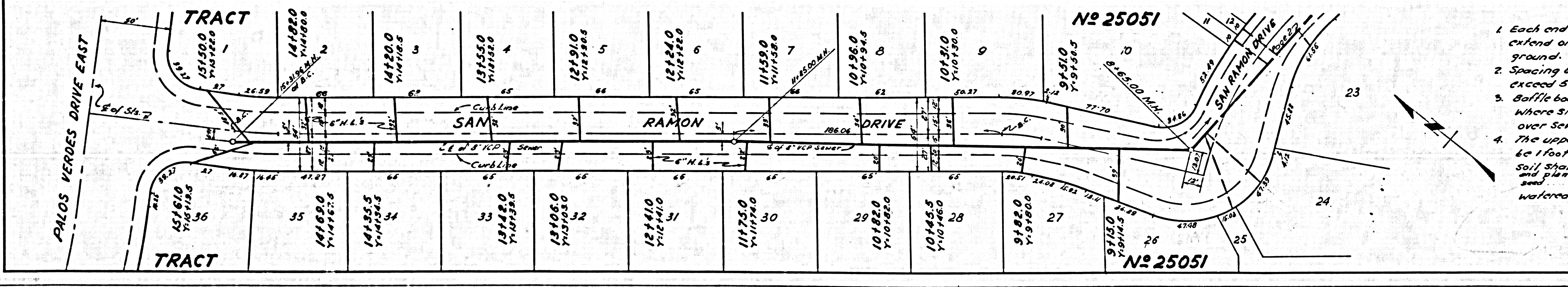
P.C. 5283 PAGE 2
 DOUBLE SCALE
 NO CHARGE FOR CONNECTIONS

28975

PC 5283 PAGE 3
DOUBLE SCALE
 NO CHARGE FOR CONNECTIONS



28,976



1. Each end of baffle board will extend one foot into undisturbed ground.
2. Spacing of baffle boards not to exceed 5 feet on the horizontal
3. Baffle boards shall be used where slope of ground surface over sewer exceeds 3.5%
4. The upper layer of backfill to be 1 foot min. of top soil. Top soil shall be tamped in place and planted with mustard seed and adequately watered until growth is restored.