

B.M. 57 3664 Elev. G2.881 (1955)  
 L.&T. in North curb of Artesia Blvd  
 830' West of E Carpintero Ave. prod. Bellflower Quad

# BELFLOWER BLDG. DIST. NO. 4.07

PROFILE ALIGNMENT AND GRADE OF P.C. 5291  
 SANITARY SEWERS PAGE 1  
 TO BE CONSTRUCTED IN  
 TRACT No 24871

PRIVATE CONTRACT NO. 5291

W.S. 33  
 1 SHEET, 2 PAGES

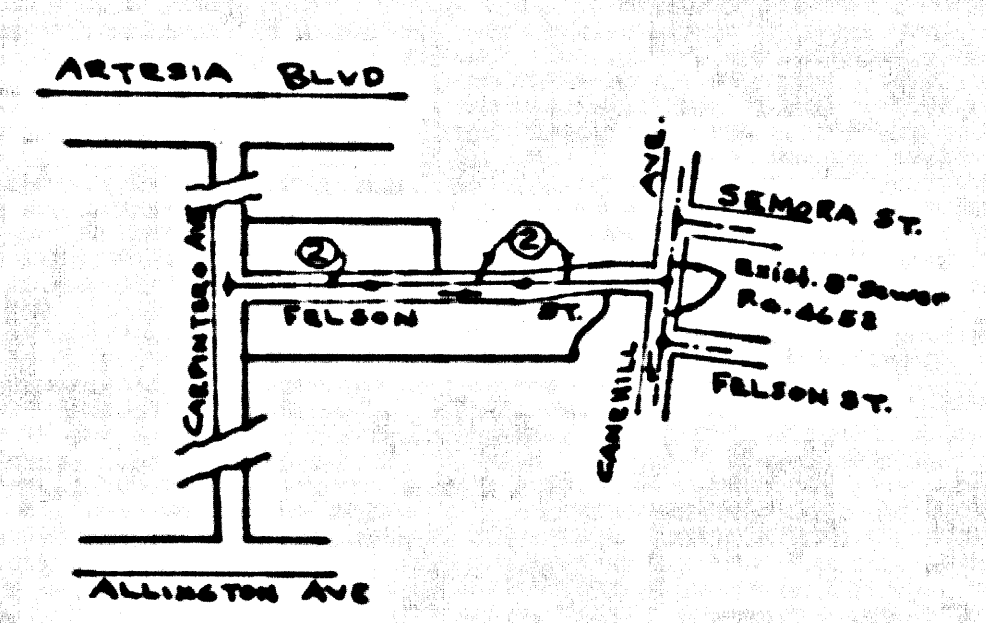
SCALE: VERT. 1"=6' HORIZ. 1"=40' JULY, 1959

PREPARED IN THE OFFICES OF  
**OLSON SURVEYING SERVICE**

By *[Signature]*  
 REG. C. E. NO. 7820

FOR LEGEND SEE PLAN NO. S-A-64

- NOTES
1. PROVIDE STAKES OF THE PROPERTY LINE OR PROPERTY LINES PRODUCED AT RIGHT ANGLES TO THE SEWER LINE AT THE CENTER LINE OF EACH MANHOLE.
  2. NO REPRESENTATIVE OF THE CITY ENGINEER WILL SURVEY OR LAY OUT ANY PORTION OF THE WORK.
  3. THE OWNER OR HIS AUTHORIZED REPRESENTATIVE SHALL FURNISH THE CITY ENGINEER WITH GRADE SHEETS AND STATIONING FOR ALL HOUSE LATERALS AND Y BRANCHES AND SHALL PROVIDE STAKES FOR THEM AT THEIR PROPER LOCATIONS WITH STATIONING PLAINLY MARKED. ANY CHANGE IN LOCATION SHALL BE REQUESTED IN WRITING BY THE OWNER OR HIS REPRESENTATIVE.
  4. THE PRIVATE ENGINEER SHALL FURNISH THE HOUSE LATERAL DEPTH AT THE PROPERTY LINE BELOW THE TOP OF CURB ELEVATION FOR EACH HOUSE LATERAL ON THE GRADE SHEET.
  5. NO REVISIONS SHALL BE MADE IN THESE PLANS WITHOUT THE APPROVAL OF THE CITY ENGINEER.
  6. USE STANDARD MANHOLE FRAMES AND COVERS, S-117.
  7. USE STANDARD STRENGTH PIPE.
  8. USE CEMENT MORTAR OR "WEDGE-LOCK" OR "SPEED-SEAL" FOR ALL V.C.P. JOINTS PER SPECS., SECS. 36 & 48.
  9. RESURFACE ALL TRENCH WITHIN PAVED AREA TO MEET L.A. COUNTY ROAD DEPT. OR CALIF. STATE HIGHWAY REQUIREMENTS IN ACCORDANCE WITH PERMITS.
  10. ENCASE FOUR FEET OF SEWER AT POINTS OF INTERFERENCE WITH POLES, CASE III, S-4-172.
  11. HOUSE LATERALS TO BE CONSTRUCTED WITH 7/8" R.I.S.E. PER FOOT TO PROPERTY LINE.
  12. ALL STRUCTURES SHALL BE BRICK SEWER STRUCTURES, S-104.
  13. FOR ALLOWABLE LEAKAGE TEST USE FORMULA NO. 1, SPECS., SEC. 34.
  14. MANHOLE TOPS IN UNIMPROVED RIGHTS-OF-WAY TO BE SIX INCHES ABOVE FINISHED GRADE.
  15. THE CONTRACTOR SHALL NOTIFY THE CONSTRUCTION & STORM DRAIN DIVISION BY TELEPHONE, MADISON 9-670, EXT. 340, AT LEAST TWENTY-FOUR HOURS BEFORE STARTING ANY WORK UNDER THIS CONTRACT.



INDEX MAP  
 TRACT No 24871  
 P.C. 5291  
 1"=800'

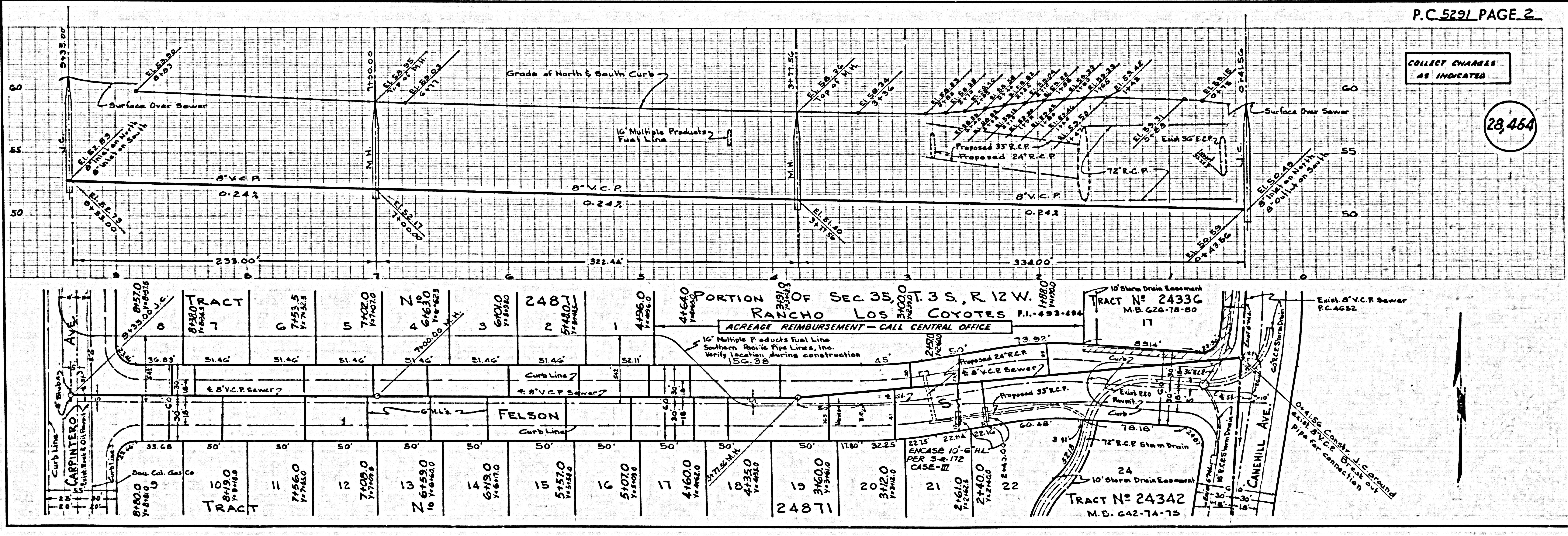
COLLECT CHARGES  
 AS INDICATED  
*[Signature]* 10-16-59

NOTES  
 GRADES TO WHICH THIS IMPROVEMENT IS TO BE CONSTRUCTED ARE SHOWN ON PLANS AND PROFILES. GRADE POINTS FOR TOP OF CURBS, CENTER LINE OF STREETS, OR CENTER LINE OF ALLEYS ARE SHOWN BY CIRCLES ON PROFILES. AT ALL POINTS BETWEEN DESIGNATED POINTS THE GRADE SHALL BE ESTABLISHED SO AS TO CONFORM TO A STRAIGHT LINE DRAWN BETWEEN SAID DESIGNATED POINTS.  
 ELEVATIONS ARE IN FEET ABOVE U.S.C. & G.S. SEA LEVEL DATUM OF 1929.  
 THIS DRAWING AND THE DATA HEREON ARE HEREBY MADE A PART OF THE SPECIFICATIONS.  
 WORK SHALL BE CONSTRUCTED ACCORDING TO SPECIFICATIONS ON FILE IN THE OFFICE OF THE CITY ENGINEER AND SHALL BE PROSECUTED ONLY IN THE PRESENCE OF THE CITY ENGINEER.  
 BEFORE WORK CAN BE STARTED, THE CONTRACTOR MUST OBTAIN A PERMIT TO EXCAVATE IN CITY STREETS FROM THE L.A. COUNTY ROAD DEPT., DISTRICT OFFICE NO. 42, AND MAKE A DEPOSIT WITH THE CITY OF BELFLOWER, 9883 BALABANT AVE., BELFLOWER. SUFFICIENT TO COVER THE COST OF CONSTRUCTION INSPECTION AND RECORD PLANS.  
 APPROVAL OF THIS PLAN BY THE CITY OF BELFLOWER DOES NOT CONSTITUTE A REPRESENTATION AS TO THE ACCURACY OF THE LOCATION OF OR THE EXISTENCE OR NON-EXISTENCE OF ANY UNDERGROUND UTILITY PIPE, OR STRUCTURE WITHIN THE LIMITS OF THIS PROJECT. THIS NOTE APPLIES TO ALL PAGES.  
 IF WORK IS TO BE DONE IN A STATE HIGHWAY, A PERMIT MUST BE OBTAINED FROM THE STATE OF CALIFORNIA, DIVISION OF HIGHWAYS, 126 SOUTH SPRING STREET.

CITY OF BELFLOWER, CALIFORNIA

APPROVED, JOHN A. LAMBE, CITY ENGINEER  
 APPROVED, C.E. CAMPBELL, CHIEF ENGINEER  
 CO. SAN. DIST. NO. 2  
 BY *[Signature]* BY *[Signature]*  
 ASSISTANT SANITATION ENGINEER OFFICE ENGINEER  
 CHECKED BY *[Signature]* 10-21-59  
 OFFICE OF CITY ENGINEER, REG. C. E. NO. 9486

Submitted By: *[Signature]* 10-16-59  
 Regional Engineer, Reg. C.E. No. 3871



COLLECT CHARGES  
 AS INDICATED

28,464

COLLECT CHARGES  
 AS INDICATED

28,464

PORTION OF SEC. 35.0 T. 3 S., R. 12 W.  
 RANCHO LOS COYOTES P.I. 493-494

ACREAGE REIMBURSEMENT - CALL CENTRAL OFFICE

TRACT No 24336  
 M.B. G28-78-80

TRACT No 24342  
 M.D. G42-74-75

0	1	2	3	4	5	6	7	8	9	10	11	12	13	14	15	16	17	18	19	20	21	22
8480.0 7-8-60 1/2-3-60	1090 8-1-60 1/2-3-60	11560 7-1-60 1/2-3-60	7408.0 7-1-60 1/2-3-60	Z 6749.0 10-1-60 1/2-3-60	6719.0 7-8-60 1/2-3-60	5457.0 7-8-60 1/2-3-60	5107.0 7-8-60 1/2-3-60	4460.0 7-8-60 1/2-3-60	4735.0 7-8-60 1/2-3-60	3460.0 7-8-60 1/2-3-60	3120.0 7-8-60 1/2-3-60	2460.0 7-8-60 1/2-3-60	2400.0 7-8-60 1/2-3-60									