

LENNOX BLDG. DIST. NO. 7

PROFILE ALIGNMENT AND GRADE OF P.C. 5293
 SANITARY SEWERS PAGE 1
 TO BE CONSTRUCTED FOR J.N.0351.81
 SAN PEDRO JUNIOR HIGH SCHOOL

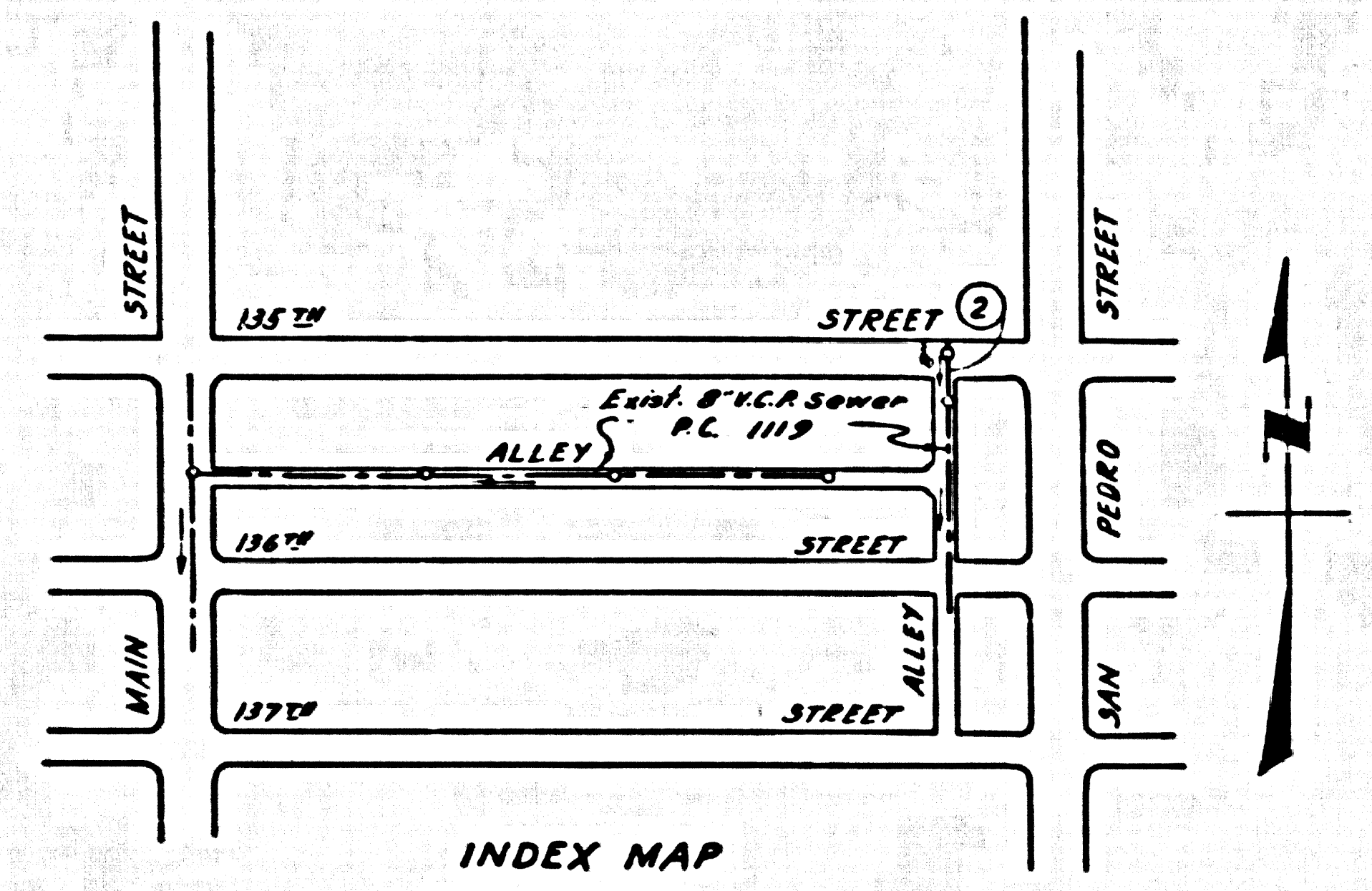
BENCH MARK:
 Rosecrans & Main St. inter. in a well protected
 by cast iron cover MARKED "City of L.A. Mon. Eng."
 A city of L.A. brass disk stamped
 "Traverse STA. Wofls D-12"
 F.S. 1391-10 1953 Elev. 113.239

- NOTES
- PROVIDE STAKES ON THE PROPERTY LINE OR PROPERTY LINES PRODUCED AT RIGHT ANGLES TO THE SEWER LINE AT THE CENTER LINE OF EACH MANHOLE.
 - NO REPRESENTATIVE OF THE COUNTY ENGINEER WILL SURVEY OR LAYOUT ANY PORTION OF THE WORK.
 - THE OWNER OR HIS AUTHORIZED REPRESENTATIVE SHALL FURNISH THE COUNTY ENGINEER WITH GRADE SHEETS AND STATION FOR ALL HOUSE LATERALS AND Y BRANCHES AND SHALL PROVIDE STAKES FOR THEM AT THEIR PROPER LOCATIONS WITH STATIONING PLAINLY MARKED. ANY CHANGE IN LOCATION SHALL BE REQUESTED IN WRITING BY THE OWNER OR HIS REPRESENTATIVE.
 - NO REVISIONS SHALL BE MADE IN THESE PLANS WITHOUT THE APPROVAL OF THE COUNTY ENGINEER.
 - USE STANDARD MANHOLE FRAMES AND COVERS, S-A-117.
 - USE STANDARD STRENGTH PIPE.
 - USE "COMBINATION" "WEDGE LOCK" OR "SPEED SEAL" FOR ALL VITRIFIED CLAY PIPE JOINTS, PER SPECS. SEE 364-18.
 - RESURFACE ALL TRENCH WITHIN PAVED AREA TO MEET L.A. COUNTY ROAD DEPT. OR CALIF. STATE HIGHWAY DEPT. REQUIREMENTS IN ACCORDANCE WITH PERMITS.
 - ENCASE FOUR FEET OF SEWER AT POINTS OF INTERFERENCE WITH POLES, S-A-119.
 - HOUSE LATERALS TO BE CONSTRUCTED WITH INVERTS AT PROPERTY LINE _____ FEET BELOW CURB GRADE EXCEPT AS NOTED.
 - ALL STRUCTURES SHALL BE BRICK SEWER STRUCTURES, S-A-104.
 - FOR ALLOWABLE LEAKAGE TEST USE FORMULA NO. _____ SPECS., SEC. 54.
 - MANHOLE TOPS IN UNIMPROVED RIGHTS-OF-WAY TO BE 4" ABOVE FINISHED GRADE.
 - THE CONTRACTOR SHALL SATISFY HIMSELF OF ALL SUBSTRUCTURES AND SHALL BE RESPONSIBLE FOR THEIR LOCATION.
 - STANDARD SPECIFICATIONS DATED JAN. 1, 1960 APPLY IN THE CONSTRUCTION OF THIS PROJECT.
 - THE CONTRACTOR SHALL NOTIFY THE CONSTRUCTION AND STORM DRAIN DIVISION BY TELEPHONE, MADISON 3-4747 (R.E. B125) AT LEAST 24 HOURS BEFORE STARTING ANY WORK UNDER THIS CONTRACT.

PRIVATE CONTRACT NO. 5293
 W.S. 26

1 SHEETS, 2 PAGES
 SCALE: VERT. 1"=4' HORIZ. 1"=40' SEPTEMBER 1959
 PREPARED IN THE OFFICES OF
 MCINTIRE & QUIROS INC.
 BY Oliver Murray 9/19/59
 REG. C. E. NO. 2528
 FOR LEGEND SEE PLAN NO. S-A-64

30287



INDEX MAP
 P.C. 5293
 SCALE: 1"=300'

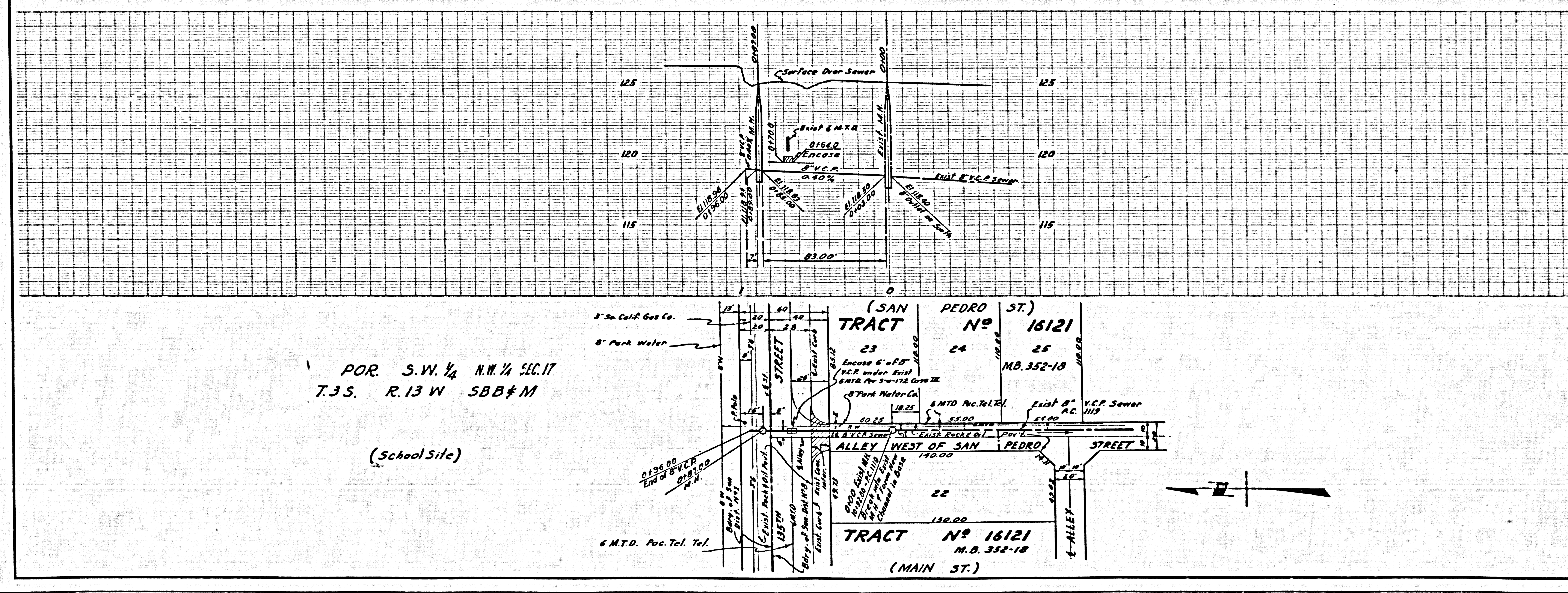
NO CHARGE FOR CONNECTIONS
Catherine B. Peedy

NOTE:
 GRADES TO WHICH THE IMPROVEMENT IS TO BE CONSTRUCTED ARE SHOWN ON PLANS AND PROFILES. GRADE POINTS FOR TOP OF CURB, CENTER LINE OF STREET, OR CENTER LINE OF ALLEYS ARE SHOWN IN CIRCLES ON PROFILES. AT ALL POINTS BETWEEN DESIGNATED POINTS THE GRADE SHALL BE ESTABLISHED SO AS TO CONFORM TO A STRAIGHT LINE DRAWN BETWEEN SAID DESIGNATED POINTS.
 ELEVATIONS ARE IN FEET ABOVE U.S. M.S. SEA LEVEL DATUM OF 1929.
 THESE DRAWINGS AND THE DATA HEREON ARE HEREBY MADE A PART OF THE SPECIFICATIONS.
 BEFORE WORK CAN BE STARTED, THE CONTRACTOR MUST OBTAIN A PERMIT TO EXCAVATE IN COUNTY STREETS FROM THE L.A. COUNTY ROAD DEPT., 2157 W. 3RD ST. AND PAY \$ 4747 TO THE COUNTY ENGINEER, ROOM 310 PLAN AMERICAN BUILDING, 333 SO. HOUGHWAY, SUFFICIENT TO COVER THE COST OF CONSTRUCTION INSPECTION AND RECORD PLANS.
 APPROVAL OF THIS PLAN BY THE COUNTY OF LOS ANGELES DOES NOT CONSTITUTE A REPRESENTATION AS TO THE ACCURACY OF THE LOCATION OR THE EXISTENCE OR NON-EXISTENCE OF ANY UNDERGROUND UTILITY PIPE, OR STRUCTURE WITHIN THE LIMITS OF THIS PROJECT. THIS NOTE APPLIES TO ALL PAGES.
 IF WORK IS TO BE DONE IN A STATE HIGHWAY, A PERMIT MUST BE OBTAINED FROM THE STATE OF CALIFORNIA, DIVISION OF HIGHWAYS, 120 SOUTH SPRING STREET.
 COUNTY OF LOS ANGELES, CALIFORNIA
 APPROVED, JOHN A. LAMBIE, COUNTY ENGINEER
 APPROVED, C.E. COMPTON, CHIEF ENGINEER
 BY E.E. Brantly 8/22/59
 3552 SANITATION ENGINEER
 BY M.C. Williams
 OFFICE ENGINEER
 CHECKED BY J.K. Wicks 8-2-60
 OFFICE OF COUNTY ENGINEER, REG. C. E. NO. 2406
 SUBMITTED BY Jack C. Langwig
 ALDO VERDES-CENTINELA VALLEY REGIONAL ENGINEER

P.C. 5293 PAGE 2

NO CHARGE FOR CONNECTIONS

30288



POR. S.W. 1/4 N.W. 1/4 SEC. 17
 T.3.S. R.13 W SBB & M

(School Site)

