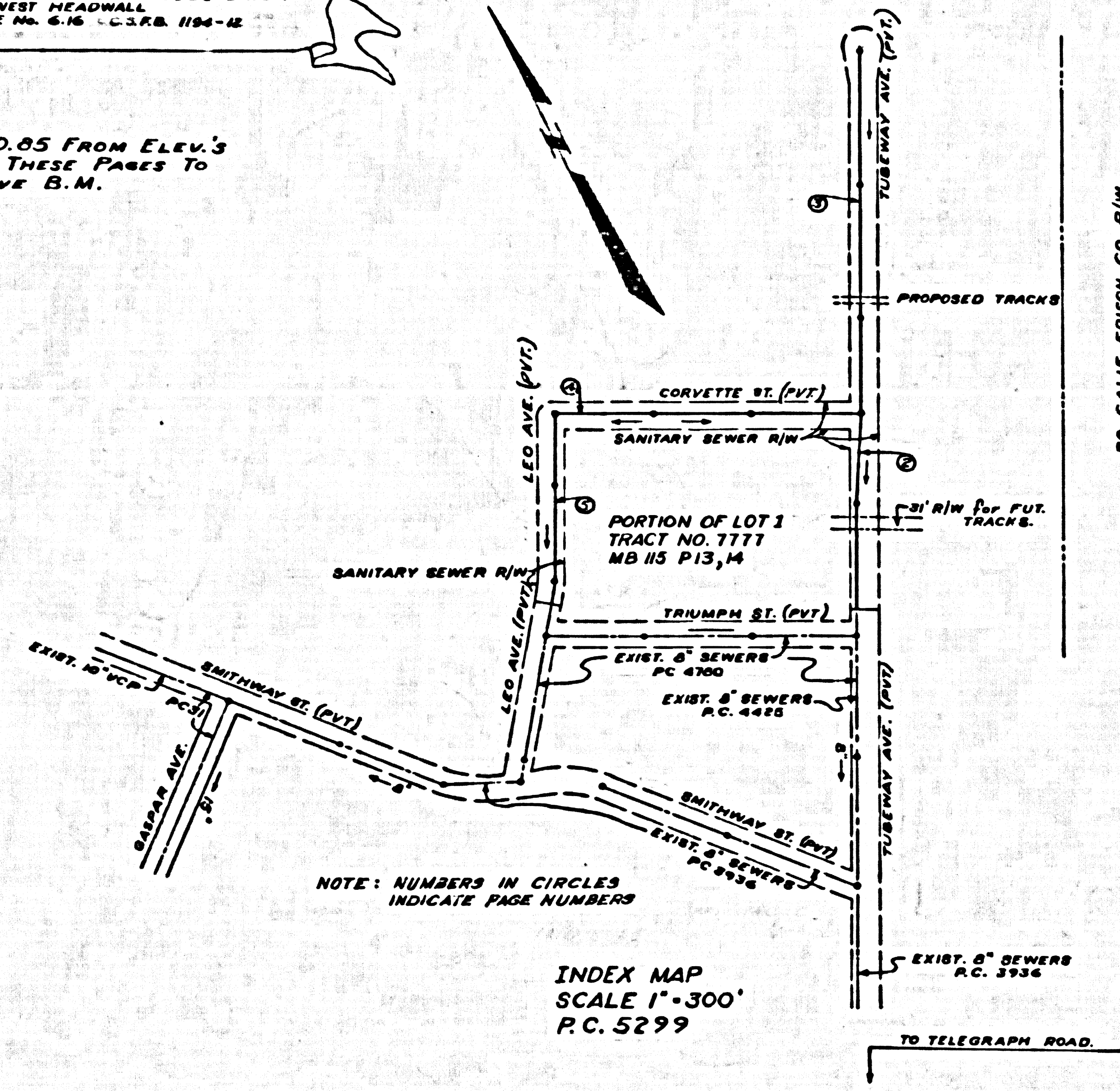


B.M. L.A. CO. SURVEY 1096 ELEV. 160.790 USGS DATUM  
 CUT SPICE SOUTH END OF WEST HEADWALL  
 U.P.R.R. CO. MAIN LINE BRIDGE No. 6.16 U.S.R.B. 1194-12

NOTE:  
 SUBTRACT 0.85 FROM ELEV'S  
 SHOWN ON THESE PAGES TO  
 CHECK ABOVE B.M.



NOTE: NUMBERS IN CIRCLES  
 INDICATE PAGE NUMBERS

INDEX MAP  
 SCALE 1"=300'  
 P.C. 5299

COMMERCE BLDG. DIST. NO. 6.01

- NOTE:  
 PROVIDE STAKES ON THE PROPERTY LINE OR PROPERTY LINES PRODUCED AT RIGHT ANGLES TO THE SEWER LINE AT THE CENTER LINE OF EACH MANHOLE.  
 NO REPRESENTATIVE OF THE CITY ENGINEER WILL SURVEY OR LAYOUT ANY PORTION OF THE WORK.  
 THE OWNER OR HIS AUTHORIZED REPRESENTATIVE SHALL FURNISH THE CITY ENGINEER WITH GRADE SHEETS AND STATION FOR ALL HOUSE LATERALS AND Y BRANCHES AND SHALL PROVIDE STAKES FOR THEM AT THEIR PROPER LOCATIONS WITH STATIONING PLAINLY MARKED. ANY CHANGE IN LOCATION SHALL BE REQUESTED BY WRITING BY THE OWNER OR HIS REPRESENTATIVE.  
 NO REVISIONS SHALL BE MADE IN THESE PLANS WITHOUT THE APPROVAL OF THE CITY ENGINEER.
1. USE STANDARD MANHOLE FRAMES AND COVERS, S.A-117, EXCEPT AS NOTED.
  2. USE STANDARD STRENGTH PIPE EXCEPT AS NOTED.
  3. USE CEMENT MORTAR, WEDGE-LOCK OR SPEED-SEAL FOR ALL VITRIFIED CLAY PIPE JOINTS PER SPEC'S, TCCS 36 & 48.
  4. RESURFACE ALL TRENCH WITHIN PAVED AREA TO MEET L. A. COUNTY ROAD DEPT., OR CALIF. STATE HIGHWAY DEPT. REQUIREMENTS IN ACCORDANCE WITH PERMITS.
  5. ENCASE FOUR FEET OF SEWER AT POINTS OF INTERFERENCE WITH POLES, S.A-177 CASE III.
  6. HOUSE LATERALS TO BE CONSTRUCTED WITH INVERTS AT PROPERTY LINE 6 FEET BELOW CURB GRADE EXCEPT AS NOTED.
  7. ALL STRUCTURES SHALL BE BRICK SEWER STRUCTURES, S.A-164.
  8. FOR ALLOWABLE LEAKAGE TEST USE FORMULA NO. 1 SPEC'S, SEC. 5-6.
  9. MANHOLE TOPS IN UNIMPROVED RIGHTS-OF-WAY TO BE 6" ABOVE FINISHED GRADE.
- NOTE: THE PRIVATE ENGINEER IS TO FURNISH THE HOUSE LATERAL DEPTH AT THE PROPERTY LINE BELOW THE TOP OF THE CURB FOR EACH HOUSE LATERAL ON THE GRADE SHEET.

NOTE:  
 THE CONTRACTOR SHALL NOTIFY THE  
 CONSTRUCTION DIVISION BY TELEPHONE,  
 MADISON NINE FOUR SEVEN FOUR SEVEN,  
 EXT. THREE SIX TWO, AT LEAST TWENTY  
 FOUR HOURS BEFORE STARTING ANY  
 WORK UNDER THIS CONTRACT.

NO CHARGE  
 FOR CONNECTIONS  
*Rob. Albertson*

SUBMITTED: *J. P. Rausch*  
 SAN GABRIEL VALLEY REGIONAL OFFICE  
 DESIGN ENGINEER

PROFILE ALIGNMENT AND GRADE OF P.C. 5299  
 SANITARY SEWERS PAGE 1

TO BE CONSTRUCTED IN  
 RIGHT OF WAY IN  
 TRACT No. 7777 LOT 1  
 MB 115 13-14

TUBEWAY AVE. CORVETTE ST. LEO AVE. PRIVATE ST.

PRIVATE CONTRACT NO. 5299

W.S. 36  
 3 SHEETS, 5 PAGES

SCALE: VERT. 1"=4'  
 HORIZ. 1"=40' SEPT, 1959

PREPARED IN THE OFFICES OF  
 UNION PACIFIC RAILROAD COMPANY

*J. A. Montgomery*  
 REG. C. E. NO. 9152  
 FOR LEGEND SEE PLAN NO. S.A-64

28892

NOTE:  
 GRADES TO WHICH THE IMPROVEMENT IS TO BE CONSTRUCTED ARE SHOWN ON PLANS AND PROFILE. GRADE POINTS FOR TOP OF CURBS, CENTER LINE OF STREETS, OR CENTER LINE OF ALLEYS ARE SHOWN BY CIRCLES ON PROFILE. AT ALL POINTS BETWEEN DESIGNATED POINTS THE GRADE SHALL BE ESTABLISHED SO AS TO CONFORM TO A STRAIGHT LINE DRAWN BETWEEN SAID DESIGNATED POINTS.  
 ELEVATIONS ARE IN FEET ABOVE U.S.C. & G.S. SEA LEVEL DATUM OF 1929.  
 THIS DRAWING AND THE DATA HEREON ARE HEREBY MADE A PART OF THE SPECIFICATIONS.  
 WORK SHALL BE CONSTRUCTED ACCORDING TO SPECIFICATIONS ON FILE IN THE OFFICE OF THE CITY ENGINEER AND SHALL BE INSPECTED ONLY IN THE PRESENCE OF THE CITY ENGINEER.  
 IF NO WORK CAN BE STARTED, THE CONTRACTOR MUST OBTAIN A PERMIT TO EXCAVATE IN COUNTY STREETS FROM THE L. A. COUNTY ROAD DEPT., DISTRICT #6, AND PAY A DEPOSIT TO THE CITY OF COMMERCE.  
 APPROVAL OF THIS PLAN BY THE COUNTY OF LOS ANGELES DOES NOT CONSTITUTE A REPRESENTATION AS TO THE ACCURACY OF THE LOCATION OF OR THE EXISTENCE OR NON-EXISTENCE OF ANY UNDERGROUND UTILITY PIPE, OR STRUCTURE WITHIN THE LIMITS OF THIS PROJECT. THIS NOTE APPLIES TO ALL PAGES.  
 IF WORK IS TO BE DONE IN A STATE HIGHWAY, A PERMIT MUST BE OBTAINED FROM THE STATE OF CALIFORNIA, DIVISION OF HIGHWAYS, 137 SOUTH SPRING ST., SACRAMENTO, CALIF.

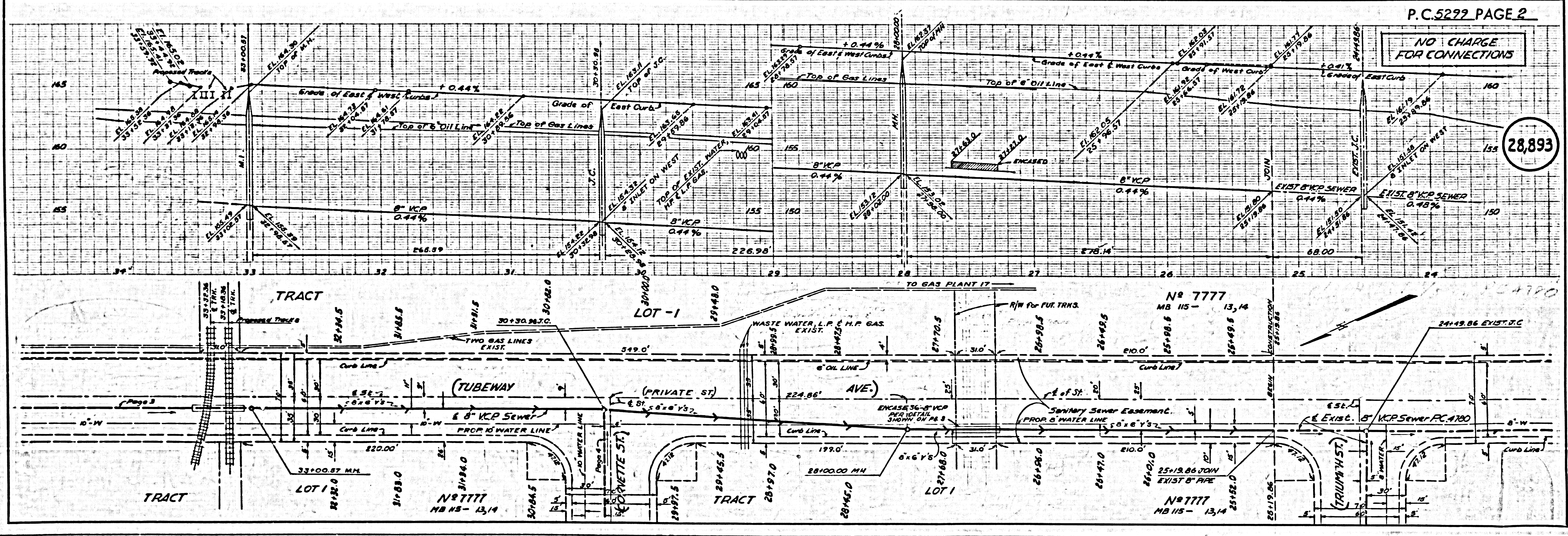
COMMERCE, CALIFORNIA

APPROVED, JOHN A. LAMBE, CITY ENGINEER APPROVED C.R. COMPTON CHIEF ENGINEER

BY *C. E. Rausch* 817, SANITATION ENGINEER BY *J. A. Montgomery* OFFICE ENGINEER

CHECKED BY *St. Ovidio* 2-1-60  
 OFFICE OF CITY ENGINEER, REG. C. E. NO. 9406

APPROVED BY  
 INDUSTRIAL WASTE DIVISION  
 BY *J. A. Montgomery* DATE 12/3/59

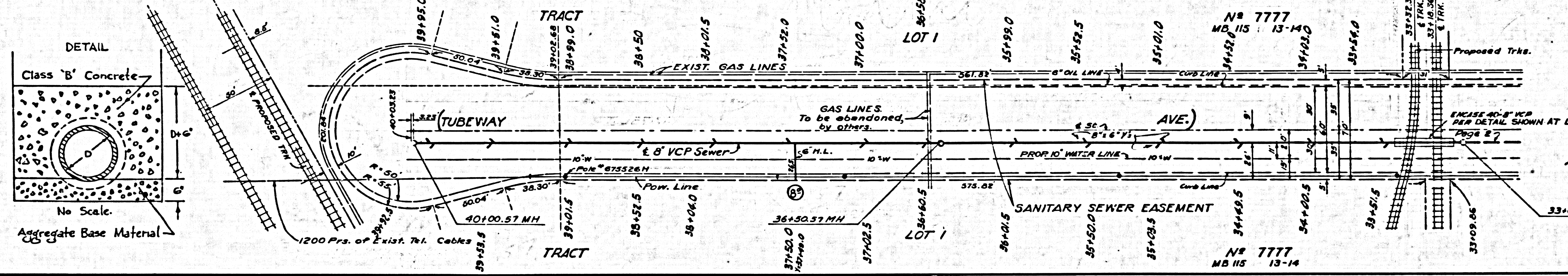
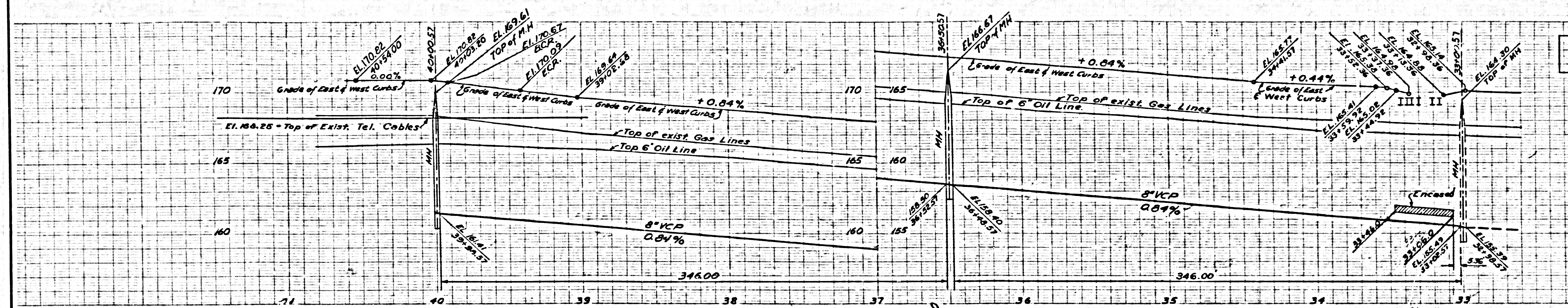


NO CHARGE  
 FOR CONNECTIONS

28893

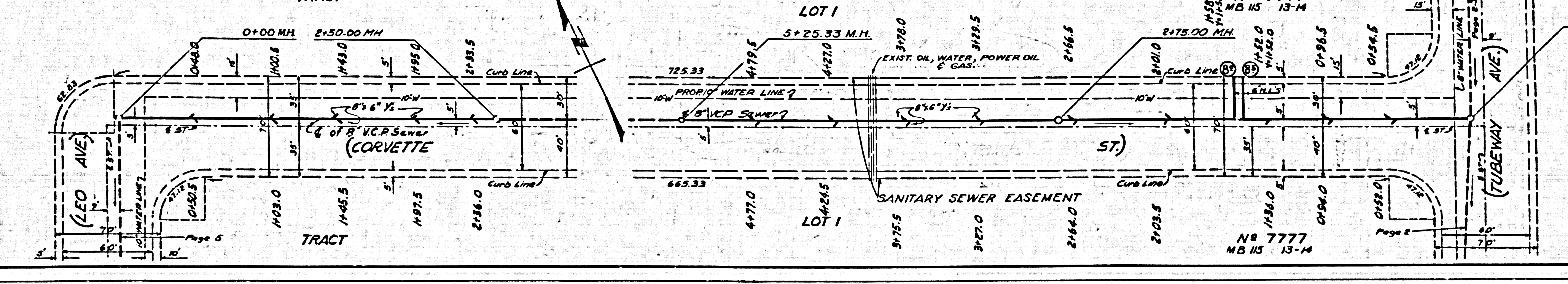
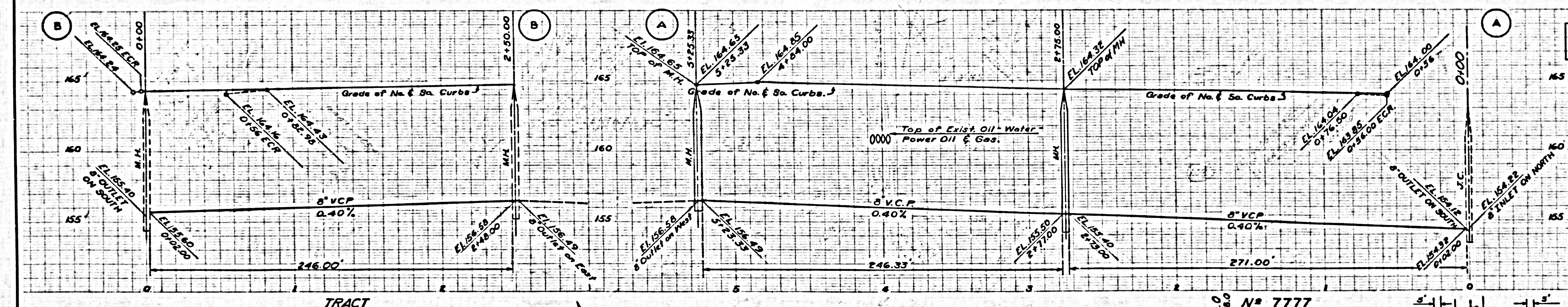
NO CHARGE FOR CONNECTIONS

28894



NO CHARGE FOR CONNECTIONS

28895



B.C. 2522

B.C. 2522

NO CHARGE FOR CONNECTIONS

28,896

