

B.M. - T.E. 376 - R.B. 1488-192  
 NORTH SIDE CALLITA ST.  
 10' S. OF W. CORNER POINT OF HOUSE  
 10' S. OF E. CORNER POINT OF HOUSE

NO CHARGE FOR CONNECTIONS  
*A. B. Obermeyer*

TEMPLE CITY BLDG. DIST. NO. 5

PROFILE ALIGNMENT AND GRADE OF P.C. 5303  
 SANITARY SEWERS PAGE 1  
 TO BE CONSTRUCTED IN J.N. 0351.88  
 TRACT No 25048

- NOTES:
1. PROVIDE STAKES ON THE PROPERTY LINE OR PROPERTY LINES PRODUCED AT RIGHT ANGLES TO THE SEWER LINE AT THE CENTER LINE OF EACH MANHOLE.
  2. NO REPRESENTATIVE OF THE COUNTY ENGINEER WILL SURVEY OR LAY OUT ANY PORTION OF THE WORK.
  3. THE OWNER OR HIS AUTHORIZED REPRESENTATIVE SHALL FURNISH THE COUNTY ENGINEER WITH GRADE SHEETS AND STATIONING FOR ALL HOUSE LATERALS AND Y BRANCHES AND SHALL PROVIDE STAKES FOR THEM AT THEIR PROPER LOCATIONS WITH STATIONING PLAINLY MARKED. ANY CHANGE IN LOCATION SHALL BE REQUESTED IN WRITING BY THE OWNER OR HIS REPRESENTATIVE.
  4. THE PRIVATE ENGINEER SHALL FURNISH THE HOUSE LATERAL DITCH AT THE PROPERTY LINE BELOW THE TOP OF CURB ELEVATION FOR EACH HOUSE LATERAL ON THE GRADE SHEET.
  5. NO REVISIONS SHALL BE MADE IN THESE PLANS WITHOUT THE APPROVAL OF THE COUNTY ENGINEER.
  6. USE STANDARD MANHOLE FRAMES AND COVERS, S-117.
  7. USE EXTRA STRENGTH PIPE. ALL PIPE IS STANDARD DEPTH.
  8. USE CEMENT MORTAR OR "WIDE-LOCK" OR "SPUR-SEAL" FOR ALL V.C.P. JOINTS PER SPEC., SECS. 34 & 35.
  9. RESURFACE ALL TRENCH WITHIN PAVED AREA TO MEET L.A. COUNTY ROAD DEPT. OR CALIF. STATE HIGHWAY REQUIREMENTS IN ACCORDANCE WITH PERMITS.
  10. ENCASE FOUR FEET OF SEWER AT POINTS OF INTERFERENCE WITH POLES, CASE III, S-172.
  11. HOUSE LATERALS TO BE CONSTRUCTED WITH INVERTS AT PROPERTY LINE .65 FEET BELOW CURB GRANT EXCEPT AS NOTED.
  12. ALL STRUCTURES SHALL BE BRICK SEWER STRUCTURES, S-194.
  13. FOR ALLOWABLE LEAKAGE TEST USE FORMULA NO. 1 - SPEC., SEC. 54.
  14. STANDARD SPECIFICATIONS DATED OCTOBER, 1961 APPLY IN THE CONSTRUCTION OF THIS PROJECT.

PRIVATE CONTRACT NO. 5303

W.S. 44  
 1 SHEET, 2 PAGES

SCALE: VERT. 1"=4' HORIZ. 1"=40'

NOVEMBER, 1961

PREPARED IN THE OFFICES OF

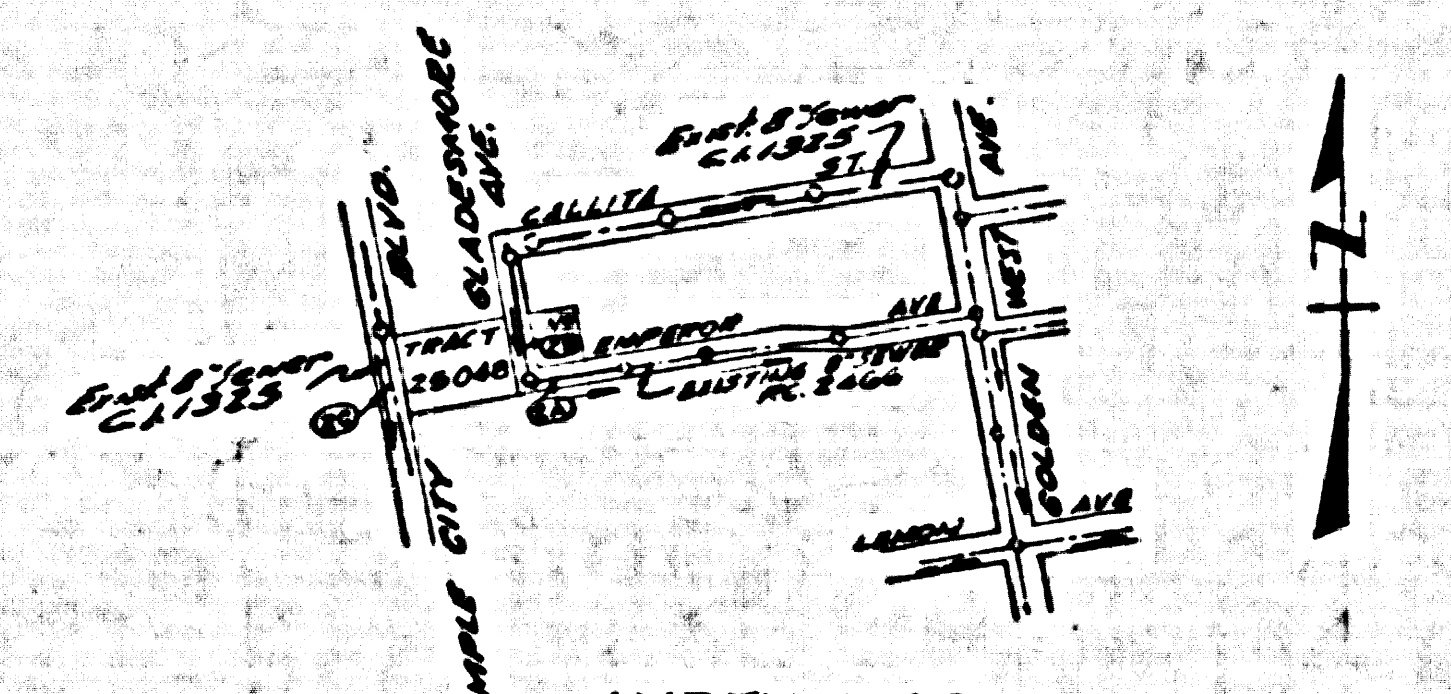
STRECKER ASSOCIATES INC.

By: *John A. Boyd* REG. C. E. NO. 8638

FOR LEGEND SEE PLAN NO. S-A-64

32379

1. Extended Main Line Sewer in Gladesmore Ave. From station #8100 to station #8200.  
 2. Added three house laterals in Gladesmore Ave.  
 - REVISION -  
*N.F. Braumender* Date 5-14-62  
 San Gabriel Valley Regional Engineer  
 - REVISION -  
 Moved Sewer line, section "A" Page 2, 10' Northerly.  
*N.F. Braumender* Date 8-13-62  
 San Gabriel Valley Regional Engineer



INDEX MAP  
 SCALE 1"=600'  
 TRACT No 25048  
 P.C. 5303

NO CONNECTIONS FOR THE DISPOSAL OF INDUSTRIAL WASTES SHALL BE MADE TO SEWERS SHOWN ON THESE DRAWINGS WITHOUT WRITTEN PERMISSION FROM THE CHIEF ENGINEER AND GENERAL MANAGER OF THE COUNTY SANITATION DISTRICTS.

NOTES:  
 GRADES TO WHICH THIS IMPROVEMENT IS TO BE CONSTRUCTED ARE SHOWN ON PLANS AND PROFILE. GRADE POINTS FOR TOP OF CURB, CENTER LINE OF STREET, OR CENTER LINE OF ALLEY ARE SHOWN BY CIRCLES ON PROFILES. AT ALL POINTS BETWEEN REGULAR POINTS THE GRADE SHALL BE ADJUSTED SO AS TO COME TO A STRAIGHT LINE BETWEEN SAID REGULAR POINTS.  
 ELEVATIONS ARE IN FEET ABOVE U.S.C. & G.S. SEA LEVEL DATUM OF 1929.  
 THIS DRAWING AND THE DATA HEREON ARE HEREBY MADE A PART OF THE SPECIFICATIONS.  
 WORK SHALL BE CONSTRUCTED ACCORDING TO SPECIFICATIONS ON FILE IN THE OFFICE OF THE COUNTY ENGINEER AND SHALL BE PROTECTED ONLY IN THE PRESENCE OF THE COUNTY ENGINEER.  
 BEFORE WORK CAN BE STARTED, THE CONTRACTOR MUST OBTAIN A PERMIT TO EXCAVATE IN COUNTY STREETS FROM THE L.A. COUNTY ROAD DEPT., DISTRICT OFFICE NO. 1, AND PAY A FEE TO THE COUNTY ENGINEER, ROOM 3000, 400 S. GILBERT BLVD., LOS ANGELES, CALIF. SUFFICIENT TO COVER THE COST OF CONSTRUCTION INSPECTION AND RECORD PLANS.  
 APPROVAL OF THIS PLAN BY THE COUNTY OF LOS ANGELES DOES NOT CONSTITUTE A REPRESENTATION AS TO THE ACCURACY OF THE LOCATION OF OR THE EXISTENCE OR NON-EXISTENCE OF ANY UNDERGROUND UTILITY PIPE, OR STRUCTURE WITHIN THE LIMITS OF THIS PROJECT. THE NOTE APPLIES TO ALL PAGES.  
 IF WORK IS TO BE DONE IN A STATE HIGHWAY, A PERMIT MUST BE OBTAINED FROM THE STATE OF CALIFORNIA, DIVISION OF HIGHWAYS, 120 SOUTH SPRING STREET.

COUNTY OF LOS ANGELES, CALIFORNIA

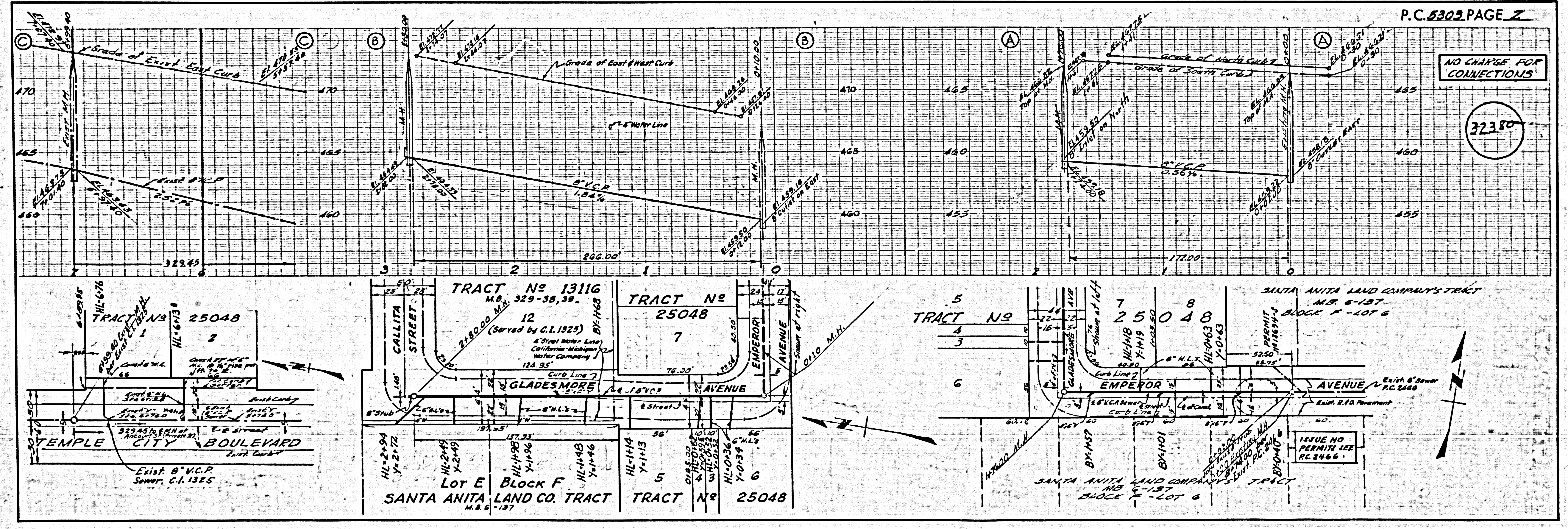
APPROVED, JOHN A. LAMBE, COUNTY ENGINEER APPROVED JOHN D. PARKHURST, CHIEF ENGINEER

BY: *John A. Boyd* ASST. SANITATION ENGINEER BY: *John D. Parkhurst* OFFICE ENGINEER

CHECKED BY: *B.T. Worling* 11-16-61

SUBMITTED BY: *N.F. Braumender* SAN GABRIEL VALLEY REGIONAL ENGINEER

B.A. ROSSBY TRACT 3032.09



P.C. 5303 PAGE 2

NO CHARGE FOR CONNECTIONS

32380

ISSUE NO PERMIT SEE P.C. 2400