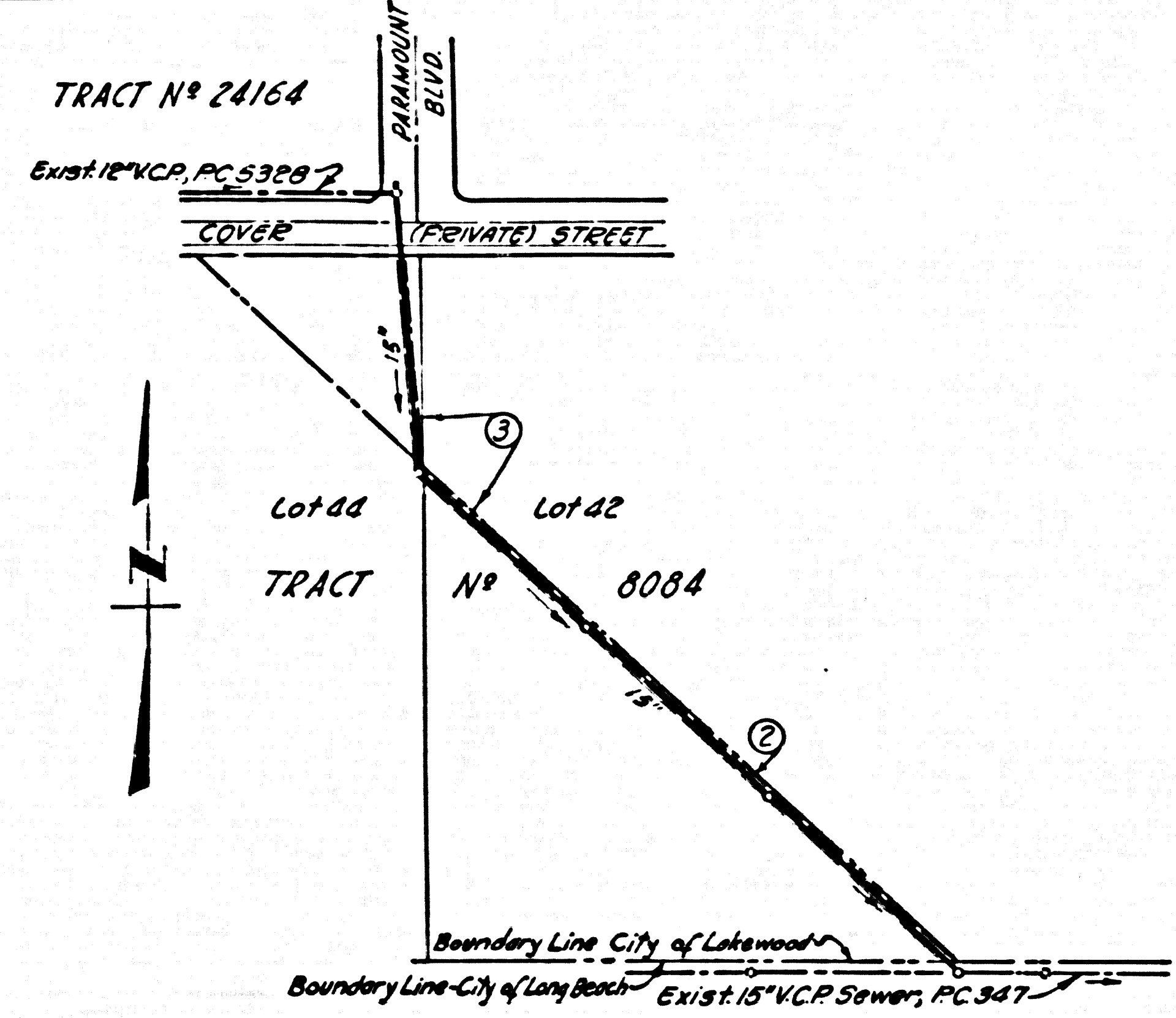


B.M.S.Y. 3636 L. & T. E. Curb of Orizaba Avenue
 1' South of Curb return S.E. cor. of Orizaba Avenue
 E. South Street Elev. 50.763 Bellflower Quad 1955
 Adj. Subtract 0.39 from all elev. to agree with this bench



INDEX MAP
 OUTFALL FOR TR. NO. 24164
 P.C. No. 5307
 Scale 1" = 200'

ISSUE NO PERMITS
 CALL
 SANITATION DIVISION

LAKEWOOD BLDG. DIST. NO. 401

- NOTES:
1. PROVIDE STAKES ON THE PROPERTY LINE OR PROPERTY LINES PRODUCED AT RIGHT ANGLES TO THE SEWER LINE AT THE CENTER LINE OF EACH MANHOLE.
 2. NO REPRESENTATIVE OF THE CITY ENGINEER WILL SURVEY OR LAY OUT ANY PORTION OF THE WORK.
 3. THE OWNER OR HIS AUTHORIZED REPRESENTATIVE SHALL FURNISH THE CITY ENGINEER WITH GRADE SHEETS AND STATIONING FOR ALL HOUSE LATERALS AND Y BRANCHES AND SHALL PROVIDE STAKES FOR THEM AT THEIR PROPER LOCATIONS WITH STATIONING PLAINLY MARKED. ANY CHANGE IN LOCATION SHALL BE REQUESTED IN WRITING BY THE OWNER OR HIS REPRESENTATIVE.
 4. THE PRIVATE ENGINEER SHALL FURNISH THE HOUSE LATERAL DEPTH AT THE PROPERTY LINE BELOW THE TOP OF CURB ELEVATION FOR EACH HOUSE LATERAL ON THE GRADE SHEET.
 5. NO REVISIONS SHALL BE MADE IN THESE PLANS WITHOUT THE APPROVAL OF THE CITY ENGINEER.
 6. USE STANDARD MANHOLE FRAMES AND COVERS, S-117.
 7. USE STANDARD STRENGTH PVC.
 8. USE CEMENT MORTAR OR "WEDGE LOCK" OR "SPREAD SEAL" FOR ALL V.C.P. JOINTS PER SPECS. SECS. 26 & 40.
 9. RESURFACE ALL TRENCH WITHIN PAVED AREA TO MEET L.A. COUNTY ROAD DEPT. OR CALIF. STATE HIGHWAY REQUIREMENTS IN ACCORDANCE WITH PERMITS.
 10. ENCASE FOUR FEET OF SEWER AT POINTS OF INTERFERENCE WITH POLES, CASE M, S-172.
 11. ALL STRUCTURES SHALL BE BRICE SEWER STRUCTURES, S-134.
 12. FOR ALLOWABLE LEAKAGE TEST USE FORMULA NO. 1, SPECS. SEC. 54.
 13. MANHOLE TOPS IN UNIMPROVED RIGHTS OF WAY TO BE LEVEL WITH EXISTING SURFACE.
 14. THE CONTRACTOR SHALL NOTIFY THE CONSTRUCTION & STORM DRAIN DIVISION BY TELEPHONE, MADISON 9-872, EXT. 342, AT LEAST TWENTY-FOUR HOURS BEFORE STARTING ANY WORK UNDER THIS CONTRACT.
 15. PRIOR TO COMMENCING CONSTRUCTION THROUGH DOUGLAS AIRCRAFT PROPERTY, THE CONTRACTOR SHALL OBTAIN CLEARANCE FOR HIS PERSONNEL FROM DOUGLAS AIRCRAFT CO., MR. GAVE WITFORD, 989-2641 (EXT. 112).

ENGINEERING SERVICE CORPORATION 1127 W. WASHINGTON BLVD. LOS ANGELES 15, CALIF. RI. 9-7281					
REVISIONS			TRACED BY <u>OMP</u>		
			DES'G'D BY <u>OMP</u>		
			CK'D BY <u>A.A.M.C.</u>		
			SUBMITTED		
SUB STRUCTURES OK'D					
W. O. NO.	DWG. NO.	DATE	SCALE	L. B.	P. B.
6835-12		JAN. 1960	As Noted	Sheet	

PROFILE ALIGNMENT AND GRADES OF P.C. 5307
 SANITARY SEWERS PAGE 1

TO BE CONSTRUCTED IN
 OUTFALL FOR
 TRACT No. 24164

PRIVATE CONTRACT NO. 5307

W.S. 30
 2 SHEETS; 3 PAGES

SCALE: VERT. 1" = 4' HORIZ. 1" = 40'
 JANUARY, 1960

PREPARED IN THE OFFICES OF
 ENGINEERING SERVICE CORPORATION

BY E.F. Koenig
 REG. C.E. NO. 3682

29,224

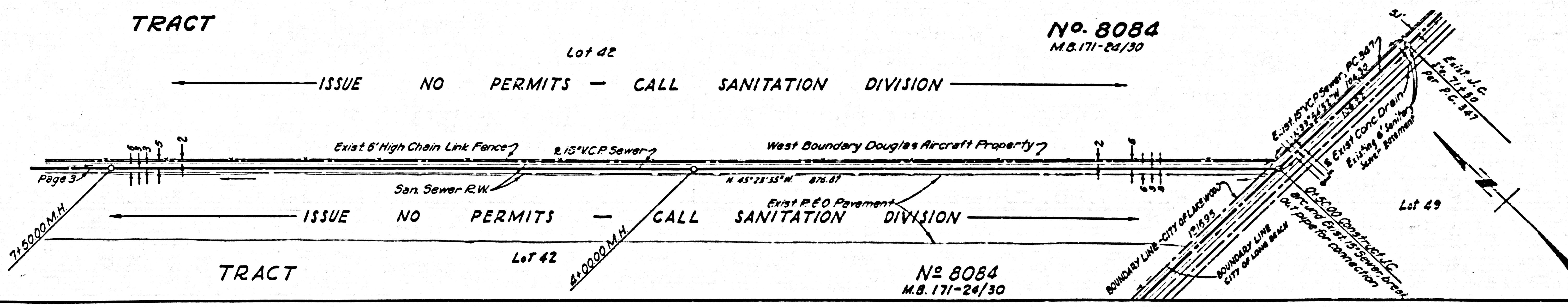
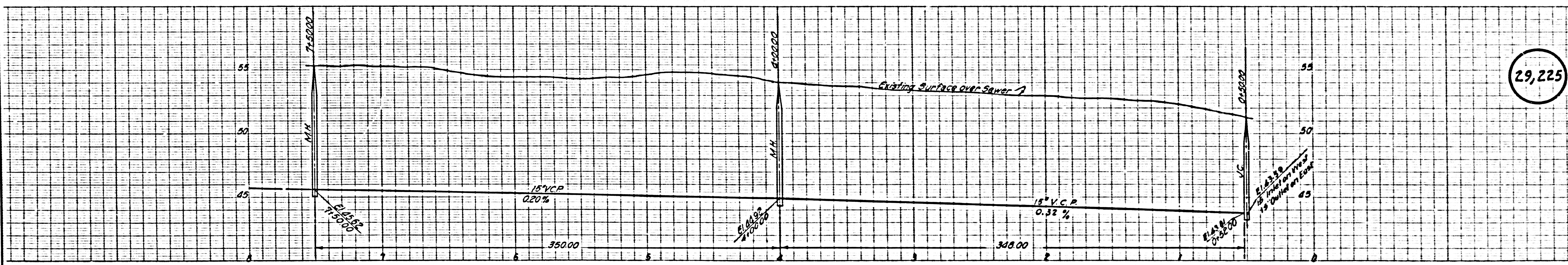
FOR LEGEND SEE PLAN NO. S-A-64

NOTE:
 GRADES TO WHICH THE IMPROVEMENT IS TO BE CONSTRUCTED ARE SHOWN ON PLANS AND PROFILES. GRADE POINTS FOR TOP OF CURBS, CENTER LINE OF STREETS, OR CENTER LINE OF ALLEYS ARE SHOWN BY CIRCLES ON PROFILES AT ALL POINTS BETWEEN DESIGNATED POINTS. GRADE SHALL BE ESTABLISHED SO AS TO CONFORM TO A STRAIGHT LINE DRAWN BETWEEN SAID DESIGNATED POINTS.
 ELEVATIONS ARE IN FEET ABOVE U.S.C. & G.S. SEA LEVEL DATUM OF 1929.
 THIS DRAWING AND THE DATA HEREON ARE HEREBY MADE A PART OF THE SPECIFICATIONS.
 WORK SHALL BE CONSTRUCTED ACCORDING TO SPECIFICATIONS ON FILE IN THE OFFICE OF THE CITY ENGINEER AND SHALL BE PROTECTIVE ONLY IN THE PRESENCE OF THE COUNTY ENGINEER.
 BEFORE WORK CAN BE STARTED, THE CONTRACTOR MUST OBTAIN A PERMIT TO EXCAVATE IN CITY STREETS FROM THE L.A. COUNTY ROAD DIST. DISTRICT OFFICE NO. 4, AND MAKE A REPORT WITH THE CITY OF LAKEWOOD 8550 E. CLARE AVE. LAKEWOOD, CALIFORNIA SUFFICIENT TO COVER THE CITY OF CONSTRUCTION INSPECTION AND RECORD PLANS.
 APPROVAL OF THIS PLAN BY THE CITY OF LAKEWOOD DOES NOT CONSTITUTE A REPRESENTATION AS TO THE ACCURACY OF THE LOCATION OF OR THE EXISTENCE OR NON-EXISTENCE OF ANY UNDERGROUND UTILITY PIPES OR STRUCTURES WITHIN THE LIMITS OF THIS PROJECT. THIS NOTE APPLIES TO ALL PAGES.
 IF WORK IS TO BE DONE ON A STATE HIGHWAY, A PERMIT MUST BE OBTAINED FROM THE STATE OF CALIFORNIA, DIVISION OF HIGHWAYS, 126 SOUTH SPRING STREET.

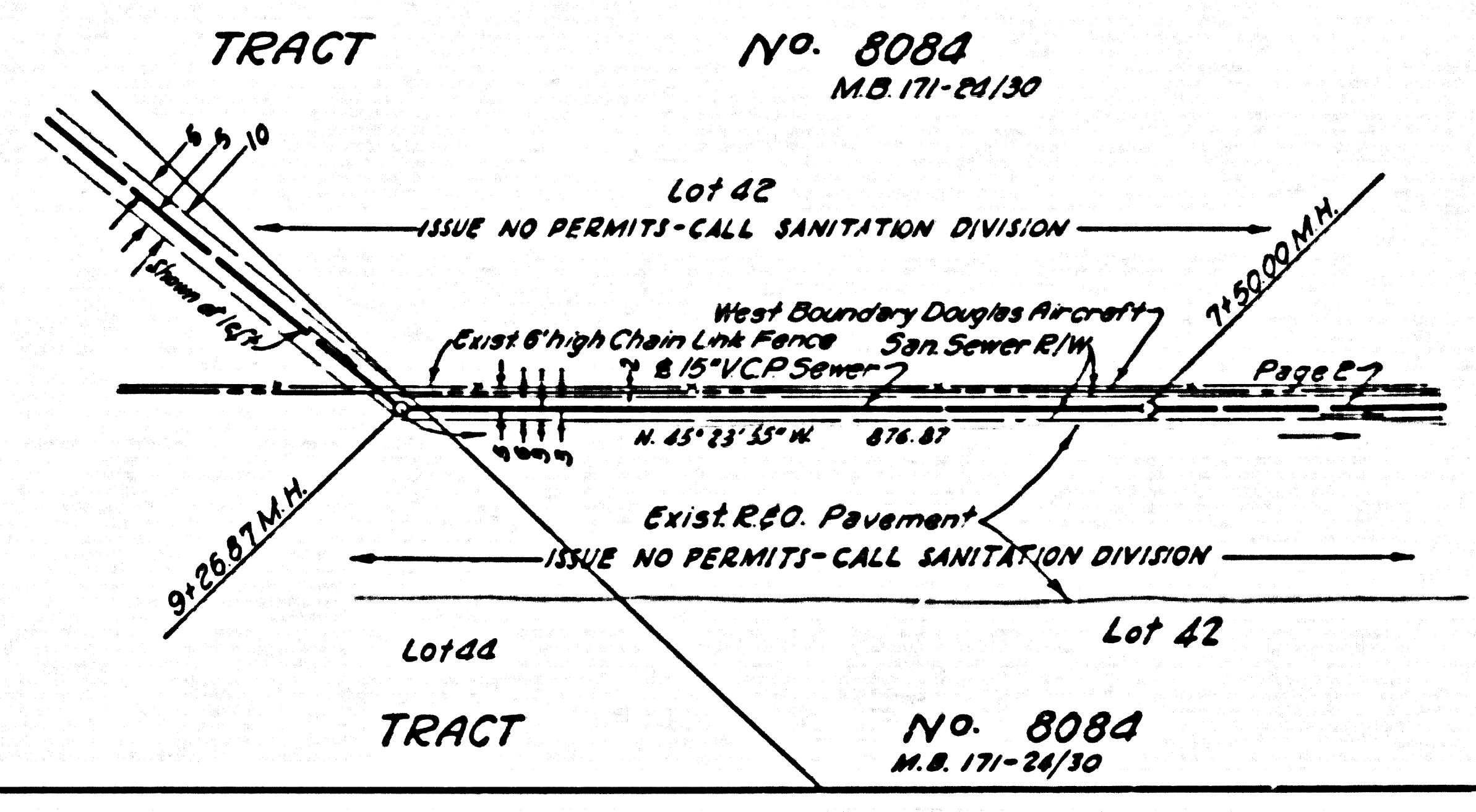
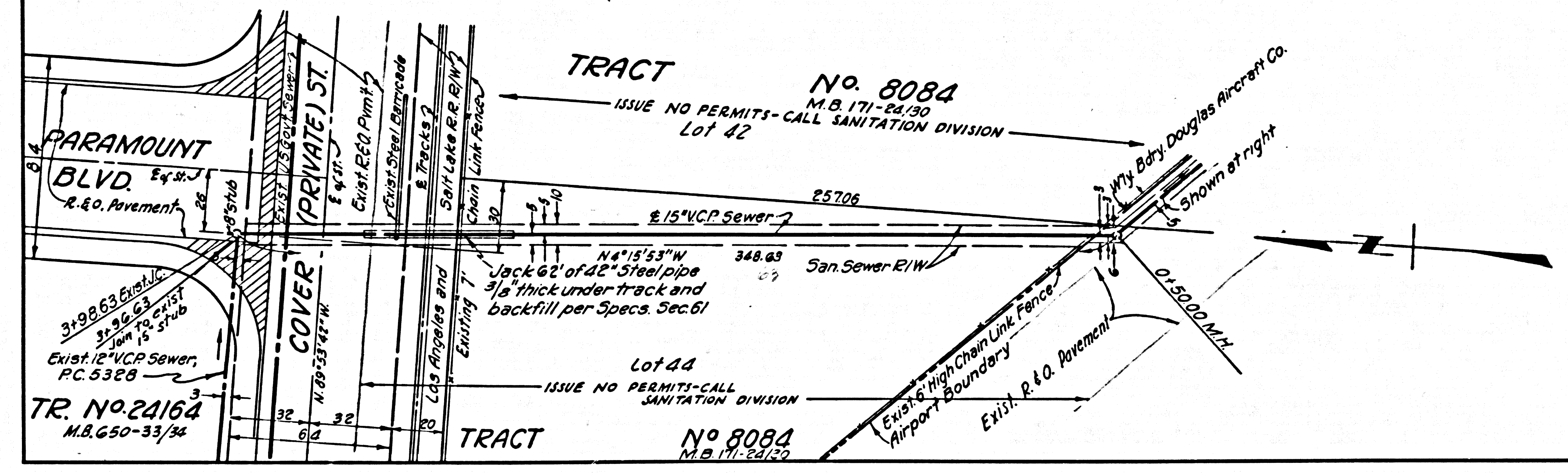
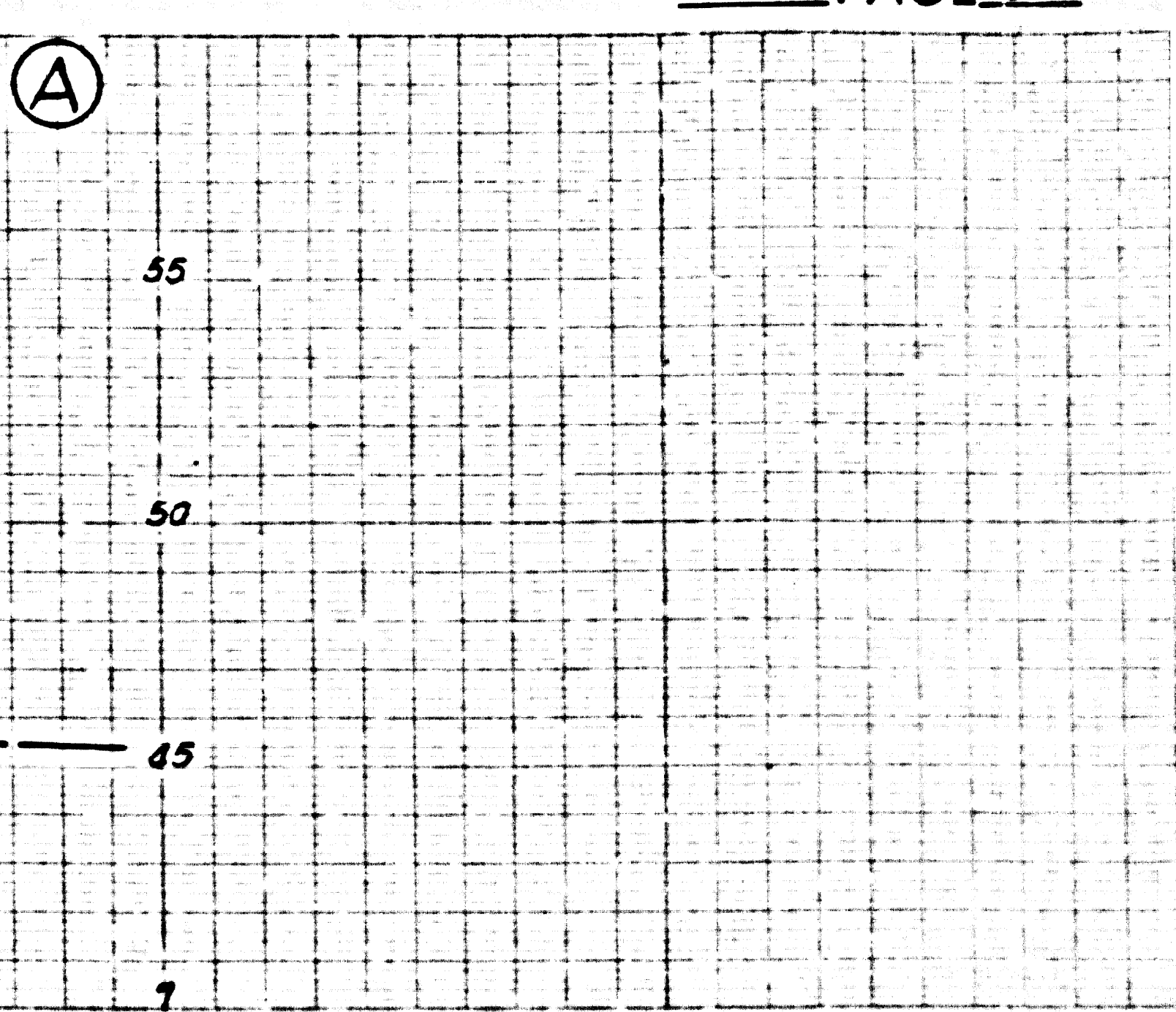
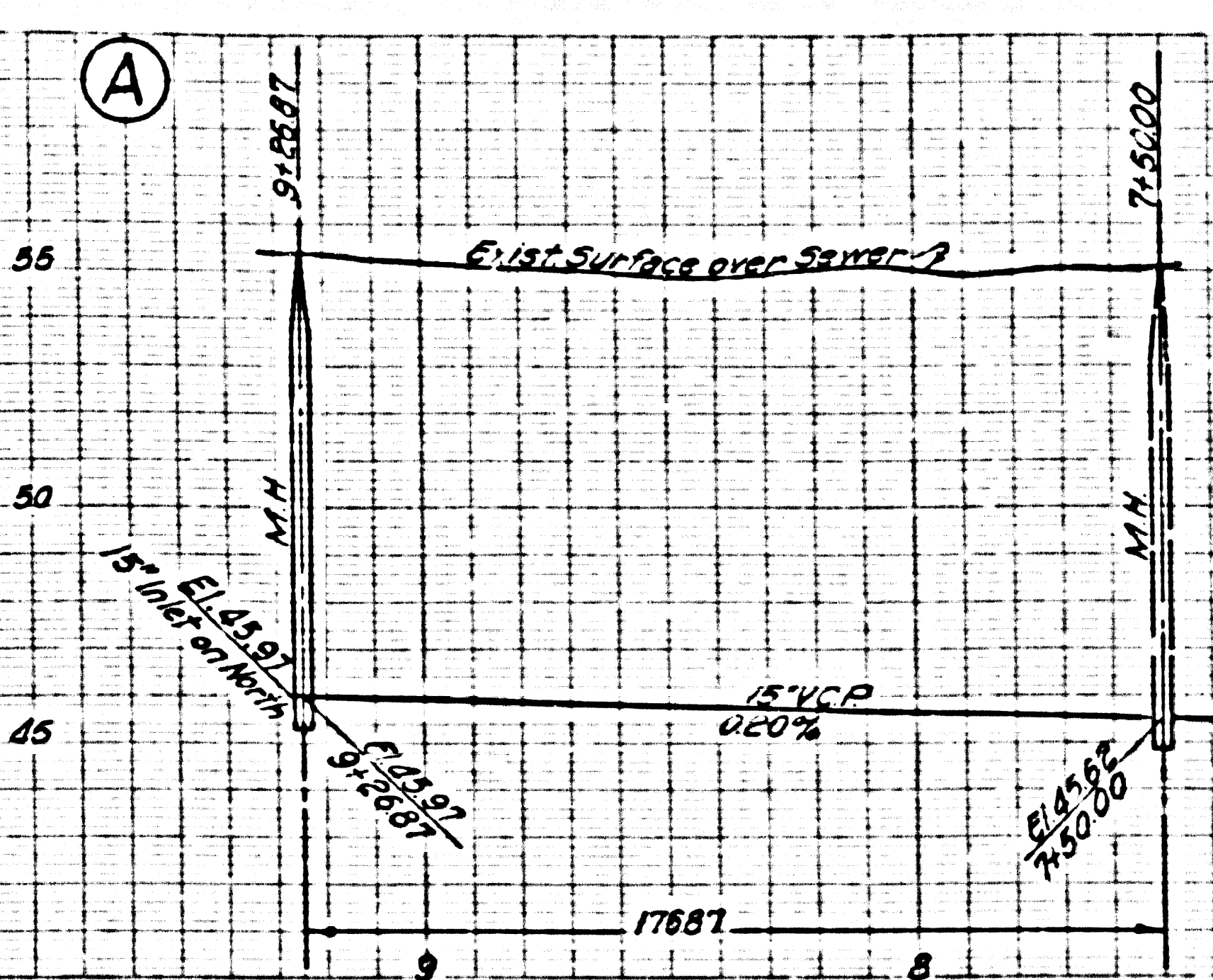
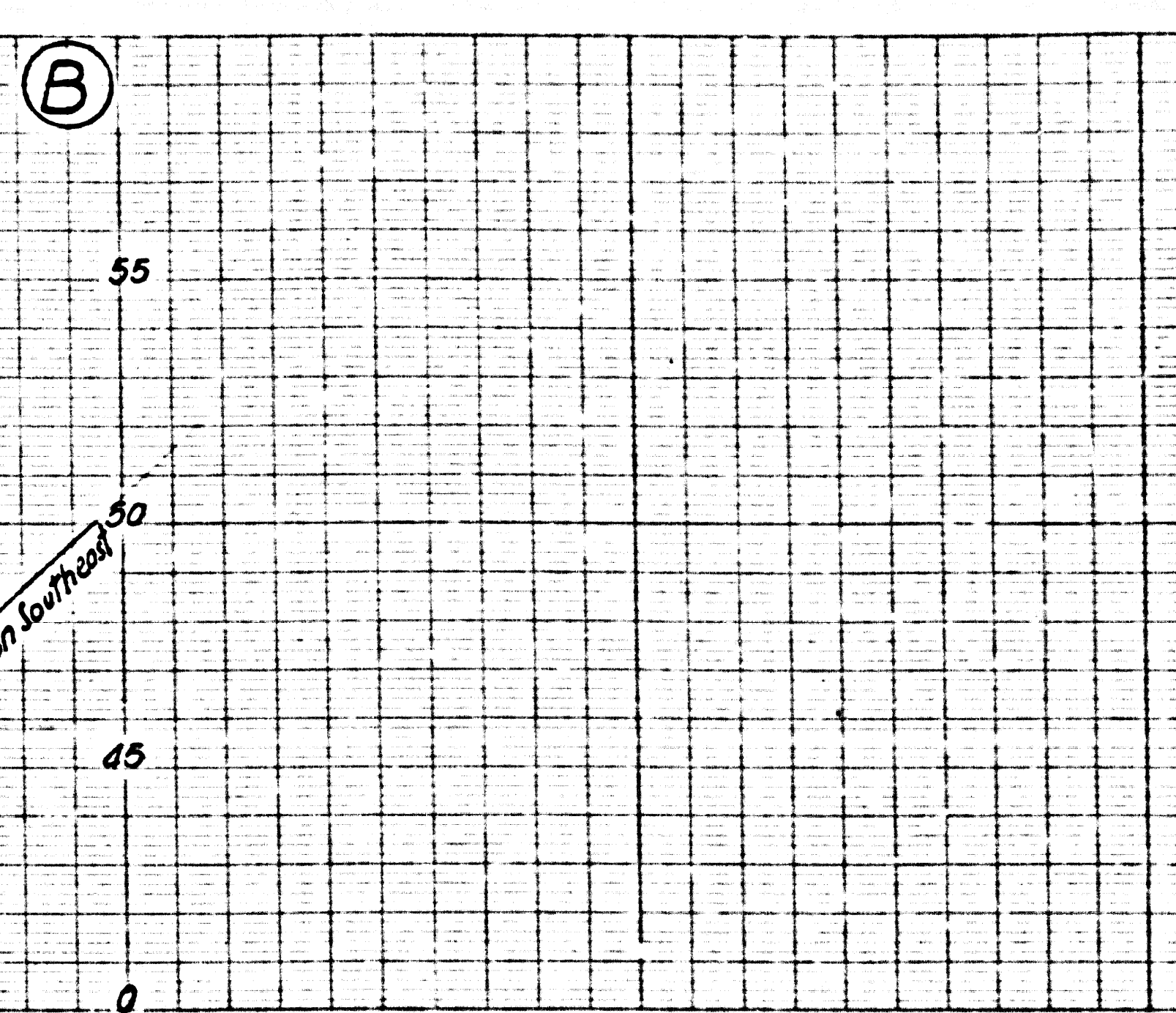
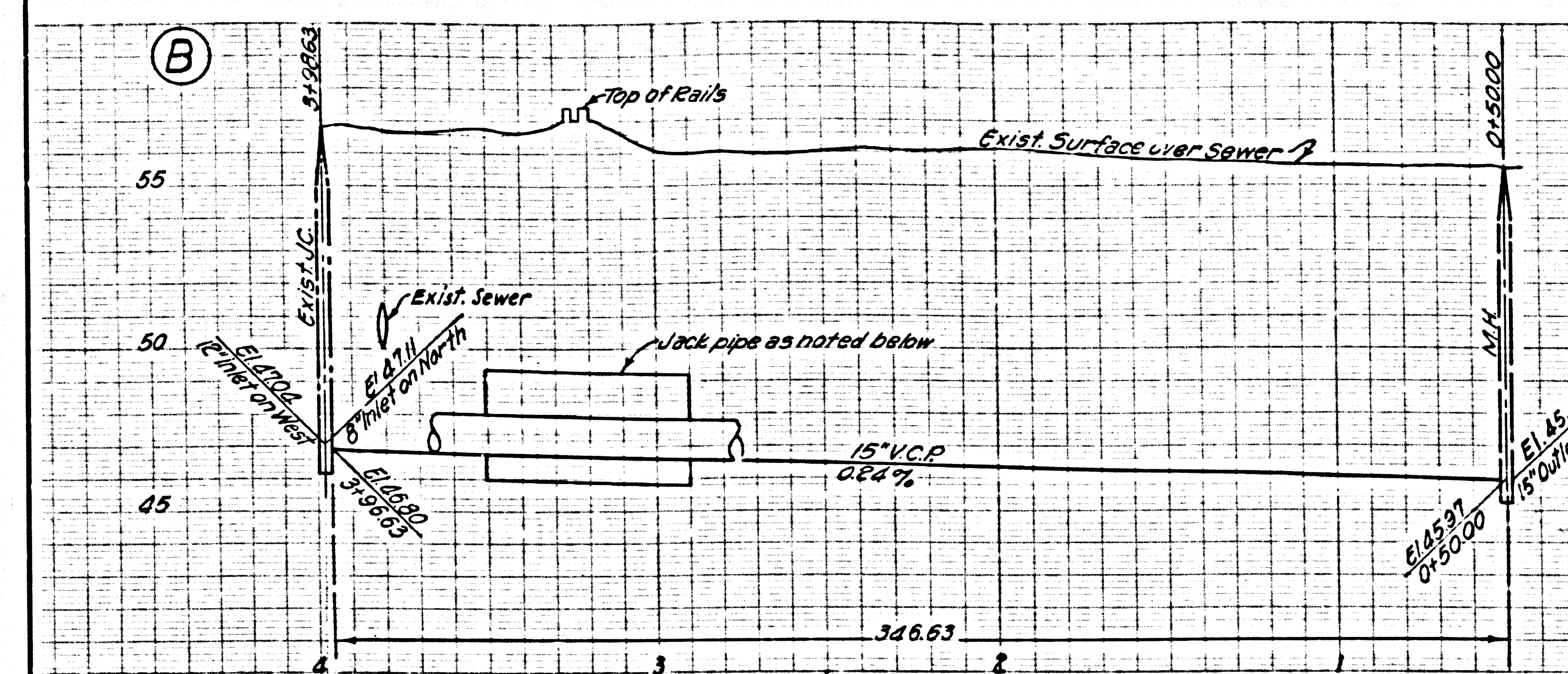
CITY OF LAKEWOOD, CALIFORNIA
 APPROVED, JOHN A. LAMBE, CITY ENGINEER
 APPROVED, C.R. COMPTON, CHIEF ENGINEER
 BY P.E. [Signature] ASST. SANITATION ENGINEER
 BY [Signature] OFFICE ENGINEER
 CHECKED BY [Signature]
 OFFICE OF CITY ENGINEER, REG. C.E. NO. 2446

Submitted By John L. Eaton 5-18-60
 (Los Cerritos Regional Engineer Reg. C.E. No. 3871)

P.C. 5307 PAGE 2



29,225



29,226