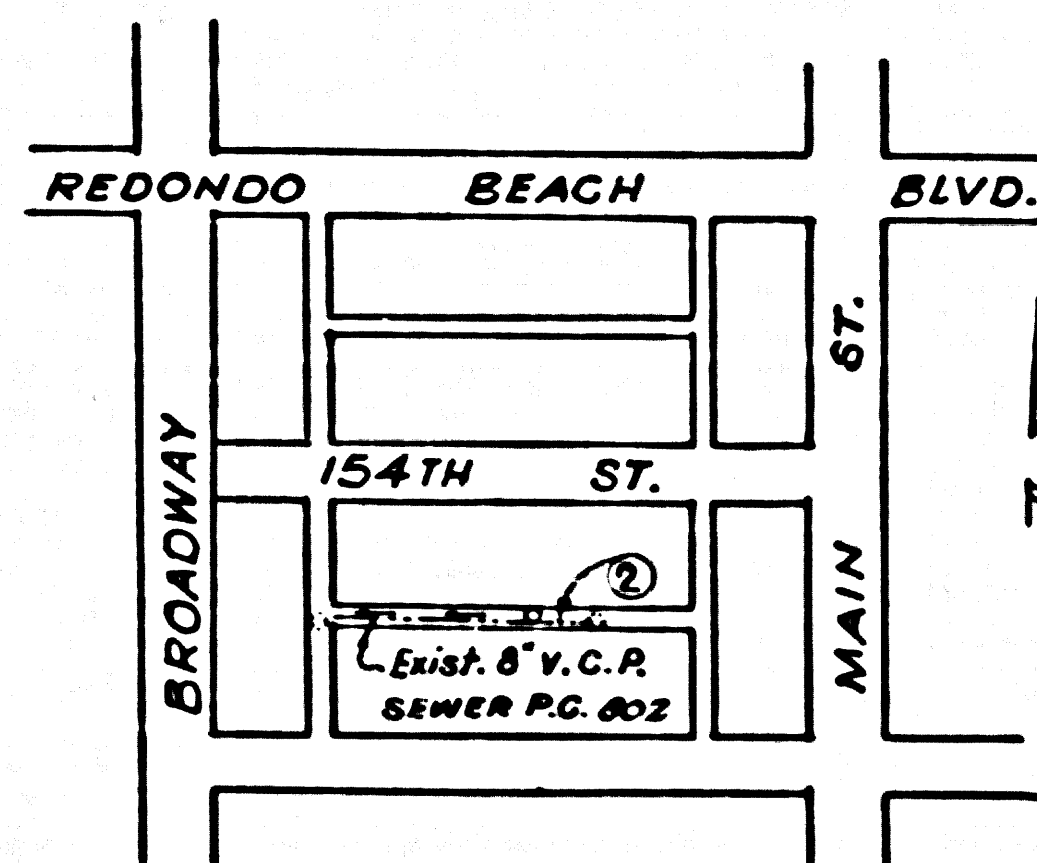


S. M. SY 3665 ELEV. 47.080  
 L. & N. CTR. OF CB. RET. N.E. COR. 155TH ST.  
 & BROADWAY GARDENA QUAD



INDEX MAP  
 SCALE 1" = 800'  
 P.C. 5308

NO CHARGE  
 FOR CONNECTIONS  
 Curtis H. Rudy - 12-12-59

LENNOX BLDG. DIST. NO. 7

- NOTES
1. PROVIDE STAKES ON THE PROPERTY LINE OR PROPERTY LINES PRODUCED AT RIGHT ANGLES TO THE SEWER LINE AT THE CENTER LINE OF EACH MANHOLE.
  2. NO REPRESENTATIVE OF THE COUNTY ENGINEER WILL SURVEY OR LAY OUT ANY PORTION OF THE WORK.
  3. THE OWNER OR HIS AUTHORIZED REPRESENTATIVE SHALL FURNISH THE COUNTY ENGINEER WITH GRADE SHEETS AND STATIONING FOR ALL HOUSE LATERALS AND V BRANCHES AND SHALL PROVIDE STAKES PLR THEM AT THEIR PROPER LOCATIONS WITH STATIONING PLAINLY MARKED. ANY CHANGE IN LOCATION SHALL BE REQUESTED IN WRITING BY THE OWNER OR HIS REPRESENTATIVE.
  4. THE PRIVATE ENGINEER SHALL FURNISH THE HOUSE LATERAL DEPTH AT THE PROPERTY LINE BELOW THE TOP OF CURB ELEVATION FOR EACH HOUSE LATERAL ON THE GRADE SHEET.
  5. NO REVISIONS SHALL BE MADE IN THESE PLANS WITHOUT THE APPROVAL OF THE COUNTY ENGINEER.
  6. USE STANDARD MANHOLE FRAMES AND COVERS, S-117, EXCEPT AS NOTED.
  7. USE STANDARD STRENGTH PIPE EXCEPT AS NOTED.
  8. USE CEMENT MORTAR OR "WEDGE-LOCK" OR "SPEED-SEAL" FOR ALL V.C.P. JOINTS PER SPEC'S, SECS. 36 & 40.
  9. RESURFACE ALL TRENCH WITHIN PAVED AREA TO MEET L.A. COUNTY ROAD DEPT. OR CALIF. STATE HIGHWAY REQUIREMENTS IN ACCORDANCE WITH PERMITS.
  10. ENCASE FOUR FEET OF SEWER AT POINTS OF INTERFERENCE WITH POLES, CASE III, S-172.
  11. HOUSE LATERALS TO BE CONSTRUCTED WITH INVERTS AT PROPERTY LINE FEET BELOW CURB GRADE EXCEPT AS NOTED.
  12. ALL STRUCTURES SHALL BE BRICK SEWER STRUCTURES, S-104, EXCEPT AS NOTED.
  13. FOR ALLOWABLE LEAKAGE TEST USE FORMULA NO. 1, SPEC'S, SEC. 54.
  14. MANHOLE TOPS IN UNIMPROVED RIGHTS-OF-WAY TO BE SIX INCHES ABOVE FINISHED GRADE.
  15. THE CONTRACTOR SHALL NOTIFY THE CONSTRUCTION & STORM DRAIN DIVISION BY TELEPHONE, MADISON 9-447, EXT. 343, AT LEAST TWENTY-FOUR HOURS BEFORE STARTING ANY WORK UNDER THIS CONTRACT.
  16. All the locations shown for existing substructures have been taken from records and their correctness and completeness is in no way guaranteed. It shall be the contractor's responsibility alone to definitely locate all underground lines of every nature whether shown hereon or not, and protect them from damage. The contractor shall bear the total expense of repair to any line damaged by any operation in connection with the prosecution of this work.
17. Standard Specification dated May 15, 1959 apply in the construction of this project.

Approved by Industrial Waste Division  
 ST. Bernard Volzberg 10/24/59

PROFILE ALIGNMENT AND GRADE OF P.C. 5308  
 SANITARY SEWERS PAGE 1  
 TO BE CONSTRUCTED IN JN. 0351.92

ALLEY SOUTH OF 154TH STREET  
 (PRIVATE SEWER)  
 PRIVATE CONTRACT NO. 5308

W.S. 26  
 1 SHEETS, 2 PAGES  
 SCALE: VERT. 1" = 4' HORIZ. 1" = 40' GGT., 1959  
 PREPARED IN THE OFFICES OF  
 BARCLAY-PEARSON CO., INC.  
 BY: Edward L. Pearson  
 REG. C. E. NO. 5783  
 FOR LEGEND SEE PLAN NO. S-A-64

28,368

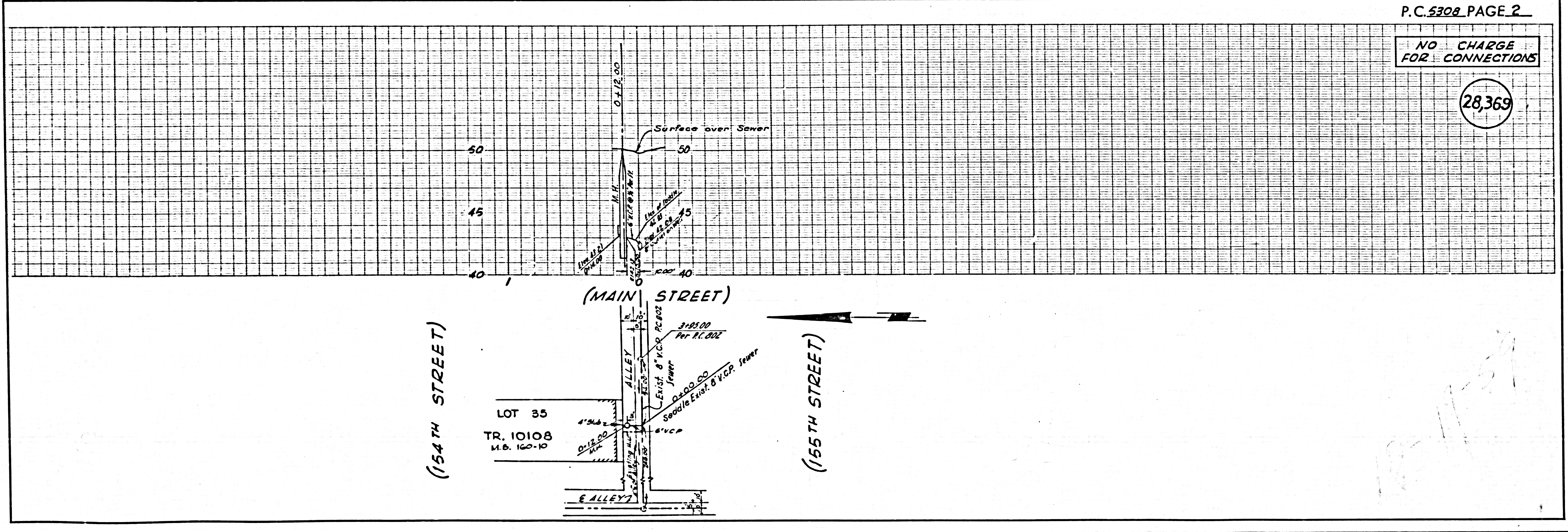
NOTE:  
 GRADES TO WHICH THIS IMPROVEMENT IS TO BE CONSTRUCTED ARE SHOWN ON PLANS AND PROFILES. GRADE POINTS FOR TOP OF CURB, CENTER LINE OF STREETS, OR CENTER LINE OF ALLEYS ARE SHOWN BY CIRCLES ON PROFILES. AT ALL POINTS BETWEEN DESIGNATED POINTS THE GRADE SHALL BE ESTABLISHED SO AS TO CONFORM TO A STRAIGHT LINE DRAWN BETWEEN SAID DESIGNATED POINTS.  
 ELEVATIONS ARE IN FEET ABOVE U.S.C. & G.S. SEA LEVEL DATUM OF 1929.  
 THIS DRAWING AND THE DATA HEREON ARE HEREBY MADE A PART OF THE SPECIFICATIONS.  
 WORK SHALL BE CONSTRUCTED ACCORDING TO SPECIFICATIONS ON FILE IN THE OFFICE OF THE COUNTY ENGINEER AND SHALL BE PROSECUTED ONLY IN THE PRESENCE OF THE COUNTY ENGINEER.  
 BEFORE WORK CAN BE STARTED THE CONTRACTOR MUST OBTAIN A PERMIT TO EXCAVATE IN COUNTY STREETS FROM THE L.A. COUNTY ROAD DEPT., DISTRICT OFFICE NO. 3, AND MAKE A DEPOSIT WITH THE COUNTY ENGINEER, ROOM 324 PAM AMERICAN BUILDING, 328 SO BROADWAY SUFFICIENT TO COVER THE COST OF CONSTRUCTION INSPECTION AND RECORD PLANS.  
 APPROVAL OF THIS PLAN BY THE COUNTY OF LOS ANGELES DOES NOT CONSTITUTE A REPRESENTATION AS TO THE ACCURACY OR THE LOCATION OR OF THE EXISTENCE OR NON-EXISTENCE OF ANY UNDERGROUND UTILITY PIPE, OR STRUCTURE WITHIN THE LIMITS OF THIS PROJECT. THIS NOTE APPLIES TO ALL PAGES.  
 NO WORK IS TO BE DONE IN A STATE HIGHWAY, A PERMIT MUST BE OBTAINED FROM THE STATE OF CALIFORNIA, DIVISION OF HIGHWAYS, 120 SOUTH SPRING STREET.

COUNTY OF LOS ANGELES, CALIFORNIA  
 APPROVED, JOHN A. LAMBIE, COUNTY ENGINEER  
 APPROVED, C.E. CAMPION, CHIEF ENGINEER  
 BY: [Signature] ASST. SANITATION ENGINEER  
 BY: [Signature] OFFICE ENGINEER  
 CHECKED BY: [Signature] 10-27-59  
 OFFICE OF COUNTY ENGINEER, REG. C. E. NO. 5486

P.C. 5308 PAGE 2

NO CHARGE  
 FOR CONNECTIONS

28,369



U.S.G.P. 100-50 CAL. BLUE PRINT SYSTEM NO. 1