

LENNOX BLDG. DIST. NO. 7

PROFILE ALIGNMENT AND GRADE OF **P.C. 5309**
SANITARY SEWERS PAGE **1**
 TO BE CONSTRUCTED IN **JN. 0351.93**
R/W EAST OF NORMANDIE AVE.

BENCH MARK SY 4431
 L.A. Co. Rd. Dept. Mon. in wall dn. 8" at or near
 the c/c. Int. of Imperial Hwy and Normandie
 Ave. (Use E. cor.)
 Watts Quad. 1955 Adj. Elev. 200.538

- NOTES:**
1. PROVIDE STAKES ON THE PROPERTY LINE OR PROPERTY LINES PRODUCED AT RIGHT ANGLES TO THE SEWER LINE AT THE CENTER LINE OF EACH MANHOLE.
 2. NO REPRESENTATIVE OF THE COUNTY ENGINEER WILL SURVEY OR LAY OUT ANY PORTION OF THE WORK.
 3. THE OWNER OR HIS AUTHORIZED REPRESENTATIVE SHALL FURNISH THE COUNTY ENGINEER WITH GRADE SHEETS AND STATIONING FOR ALL HOUSE LATERALS AND Y BRANCHES AND SHALL PROVIDE STAKES FOR THEM AT THEIR PROPER LOCATIONS WITH STATIONING PLAINLY MARKED. ANY CHANGE IN LOCATION SHALL BE REQUESTED IN WRITING BY THE OWNER OR HIS REPRESENTATIVE.
 4. THE PRIVATE ENGINEER SHALL FURNISH THE HOUSE LATERAL DEPTH AT THE PROPERTY LINE BELOW THE TOP OF CURB ELEVATION FOR EACH HOUSE LATERAL ON THE GRADE SHEET.
 5. NO REVISIONS SHALL BE MADE IN THESE PLANS WITHOUT THE APPROVAL OF THE COUNTY ENGINEER.
 6. USE STANDARD MANHOLE FRAMES AND COVERS, S-117, EXCEPT AS NOTED.
 7. USE STANDARD STRENGTH PIPE EXCEPT AS NOTED.
 8. USE CEMENT MORTAR OR "WEDGE-LOCK" OR "SPEED SEAL" FOR ALL V.C.P. JOINTS PER SPEC., SECS. 26 & 48.
 9. RESURFACE ALL TRENCH WITHIN PAVED AREA TO MEET L.A. COUNTY ROAD DEPT. OR CALIF. STATE HIGHWAY REQUIREMENTS IN ACCORDANCE WITH PERMITS.
 10. ENCASE FOUR FEET OF SEWER AT POINTS OF INTERFERENCE WITH POLES, CASE III, S-117.
 11. HOUSE LATERALS TO BE CONSTRUCTED WITH INWARDS-AS-POSSIBLE-PIPE.
 12. ALL STRUCTURES SHALL BE BRICK SEWER STRUCTURES, S-104, EXCEPT AS NOTED.
 13. FOR ALLOWABLE LEAKAGE TEST USE FORMULA NO. 1, SPEC., SEC. 54.
 14. MANHOLE TOPS IN UNIMPROVED RIGHTS-OF-WAY TO BE SIX INCHES ABOVE FINISHED GRADE.
 15. THE CONTRACTOR SHALL NOTIFY THE CONSTRUCTION & STORM DRAIN DIVISION BY TELEPHONE, MADISON 9-6727, EXT. 343, AT LEAST TWENTY-FOUR HOURS BEFORE STARTING ANY WORK UNDER THIS CONTRACT.

PRIVATE CONTRACT NO. 5309

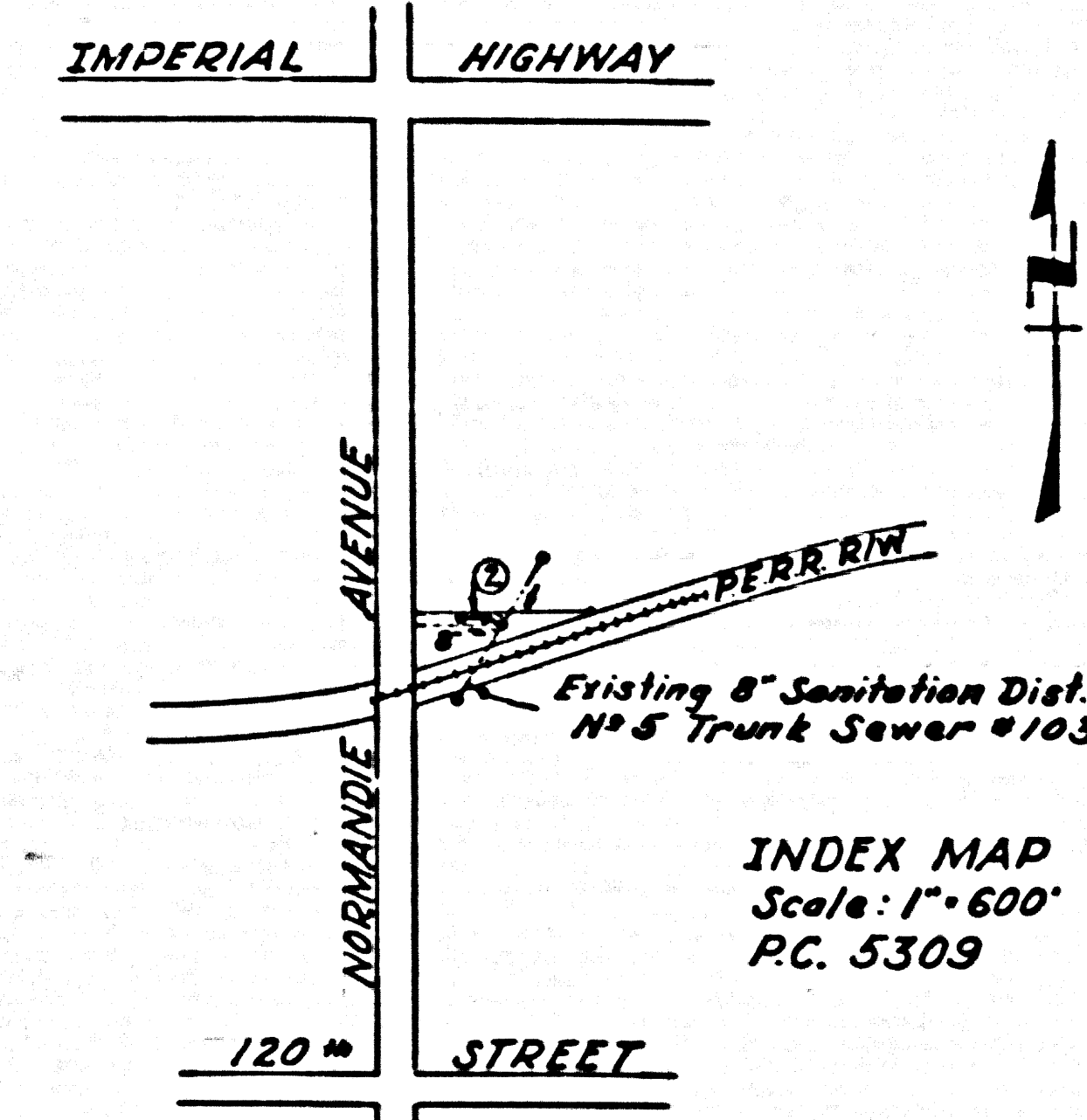
W.S. 26
 1 SHEET, 2 PAGES
 SCALE: VERT. 1"=5' HORIZ. 1"=20'
 SEPTEMBER, 1955
 PREPARED IN THE OFFICES OF
ARCADIA ENGINEERING CO.
 BY W. H. Haddock
 REG. C. E. NO. 12
 FOR LEGEND SEE PLAN NO. S-A-64

28,638

NOTES:
 GRADES TO WHICH THIS IMPROVEMENT IS TO BE CONSTRUCTED AND SHOWN ON PLANS AND PROFILES, GRADE POINTS FOR TOP OF CURB, CENTER LINE OF STREET, OR CENTER LINE OF ALLEY ARE SHOWN BY CIRCLES ON PROFILES. AT ALL POINTS BETWEEN DESIGNATED POINTS THE GRADE SHALL BE ESTABLISHED SO AS TO CONFORM TO A STRAIGHT LINE DRAWN BETWEEN SAID DESIGNATED POINTS.
 ELEVATIONS ARE IN FEET ABOVE U.S.C. & G.S. 1944 LEVEL DATUM OF 1929.
 THIS DRAWING AND THE DATA HEREON AND HEREIN MADE A PART OF THE SPECIFICATIONS.
 BEFORE WORK CAN BE STARTED THE CONTRACTOR MUST OBTAIN A PERMIT TO EXCAVATE IN COUNTY STREETS FROM THE L.A. COUNTY ROAD DEPT., DISTRICT OFFICE NO. 7, AND MAKE A DEPOSIT WITH THE COUNTY ENGINEER, ROOM 234 FAY AMERICAN BUILDING, 233 1/2 BROADWAY AVENUE TO COVER THE COST OF CONSTRUCTION SURVEY, STAKES AND RECORD PLANS.
 APPROVAL OF THIS PLAN BY THE COUNTY OF LOS ANGELES DOES NOT CONSTITUTE A REPRESENTATION AS TO THE ACCURACY OF THE LOCATION OF OR THE SENTENCE OR NON-EXISTENCE OF ANY UNDERGROUND UTILITY PIPE, OR STRUCTURE WITHIN THE LIMITS OF THIS PROJECT. THIS NOTE APPLIES TO ALL PAGES.
 IF WORK IS TO BE DONE ON A STATE HIGHWAY, A PERMIT MUST BE OBTAINED FROM THE STATE OF CALIFORNIA, DIVISION OF HIGHWAYS, 126 BOWNE SPRING STREET.

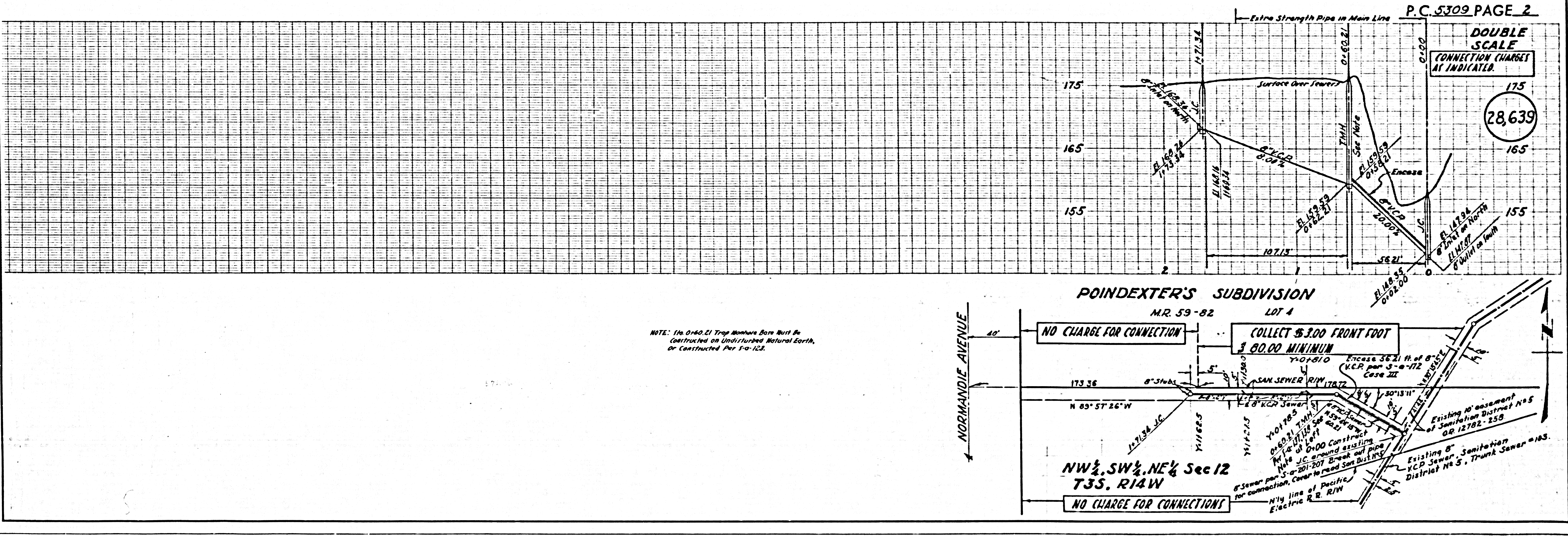
COUNTY OF LOS ANGELES, CALIFORNIA
 APPROVED, JOHN A. LAMBE, COUNTY ENGINEER
 APPROVED, C. E. SMITHSON, CHIEF ENGINEER
 BY C. E. Smithson ASST. SANITATION ENGINEER
 BY W. H. Haddock OFFICE ENGINEER
 CHECKED BY W. H. Haddock
 OFFICE OF COUNTY ENGINEER, REG. C. E. NO. 12
 SUBMITTED BY J. C. Lanning
 PALOS VERDES, CALIFORNIA CIVIL ENGINEER

17 Standard Specifications dated May 15, 1953 apply to the construction of this project.
 18. Encase all sewers per S-a-172 Case III, with less than four feet of cover from the top of pipe.



CONNECTION CHARGES AS INDICATED
Arthur B. Rody

Before breaking into any existing structure and before final acceptance of this work, County Sanitation District should be notified in order that required inspection may be made.



NOTE: 116 0+60.21 Trap Manhole Bore Must Be Constructed in Undisturbed Natural Earth, or Constructed Per S-a-123.

POINDEXTER'S SUBDIVISION
 M.R. 59-82 LOT 4
 NO CHARGE FOR CONNECTION
 COLLECT \$3.00 FRONT FOOT \$ 80.00 MINIMUM
 Encase 36.21 ft. of 8" V.C.P. per S-a-172 Case III
 NW 1/4, SW 1/4, NE 1/4 Sec 12 T3S, R14W
 NO CHARGE FOR CONNECTIONS
 Existing 8" V.C.P. Sewer, Sanitation District No. 5, Trunk Sewer #103

P.C. 5309 PAGE 2
DOUBLE SCALE
 CONNECTION CHARGES AS INDICATED
 28,638