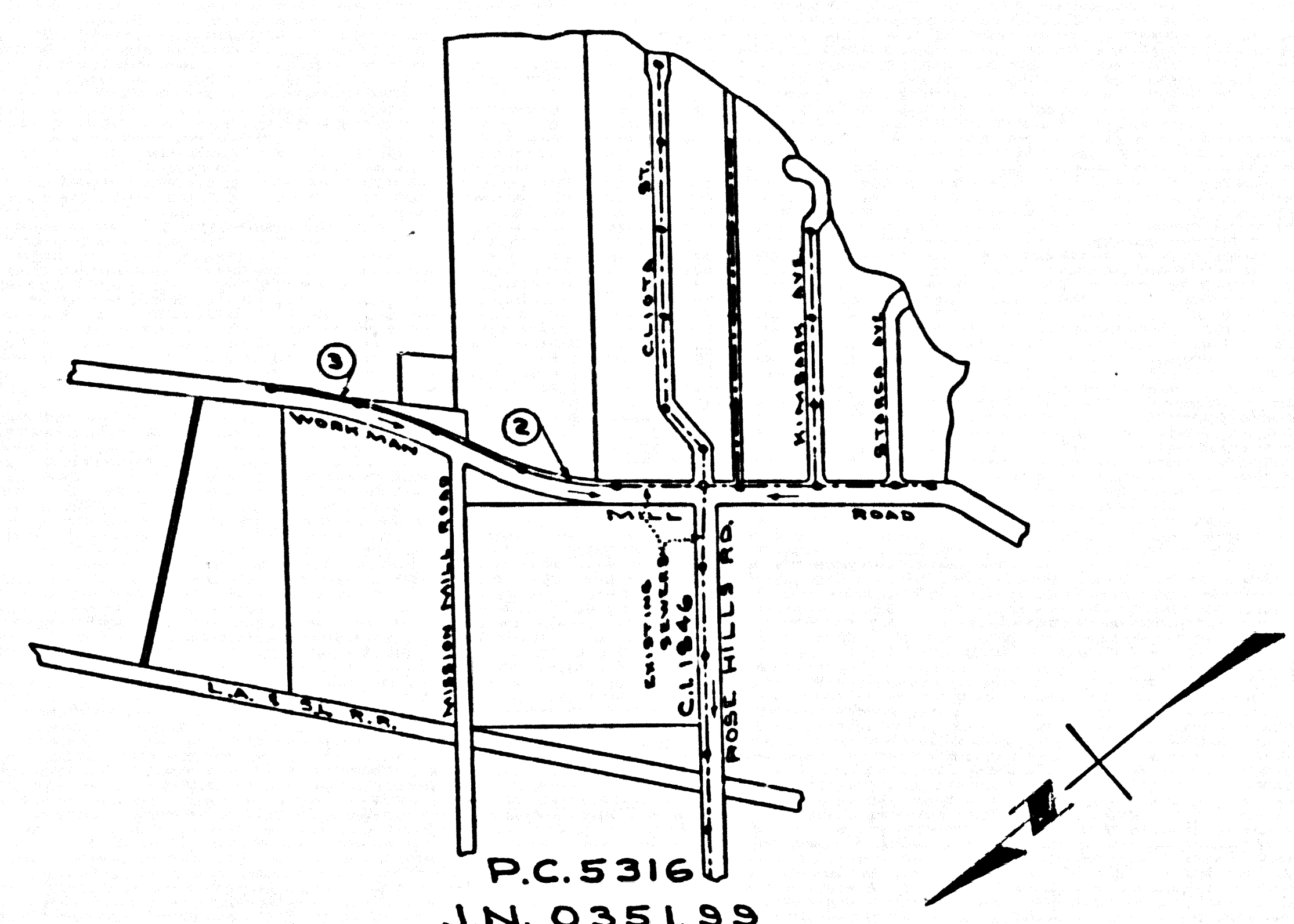


B.M. A-7-92 ELEV. 229.089 F.B. 1926-70  
 ST. SPK. IN S. END CONC. HEADWALL  
 WORKMAN MILL RD. (E. SIDE) 116' 2" N. OF  
 1ST. BC. N. OF CLOTA ST.



P.C. 5316  
 J.N. 0351.99  
 INDEX MAP  
 SCALE - 1" = 600'

NOTE: FIGURES IN CIRCLES INDICATE PAGE NUMBERS

### WHITTIER BLDG. DIST. NO. 11

- NOTES
1. PROPERTY STAKES ON THE PROPERTY LINE OR PROPERTY LINES SPACED AT RIGHT ANGLES TO THE SEWER LINE AT THE CORNERS OF EACH PARCEL.
  2. NO REPRESENTATIVE OF THE COUNTY ENGINEER SHALL SURVEY OR LAY OUT ANY PORTION OF THE WORK.
  3. THE OWNER OR HIS AUTHORIZED REPRESENTATIVE SHALL FURNISH THE COUNTY ENGINEER WITH GRADE SHEETS AND STATIONING FOR ALL HOUSE LATERALS AND Y BRANCHES AND SMALL PROPERTY STAKES FOR THEM AT THEIR PROPER LOCATIONS WITH THE TECHNICAL PLANS. ANY CHANGE IN LOCATION SHALL BE REQUESTED BY WRITING BY THE OWNER OR HIS REPRESENTATIVE.
  4. THE STANDARD SPECIFICATIONS FOR SEWER PIPE AND FITTINGS ARE AS FOLLOWS: 1. PIPE - 8" V.C.P. 100' PER 100' PER SPEC. S-117, EXCEPT AS NOTED.
  5. NO REVISIONS SHALL BE MADE IN THESE PLANS WITHOUT THE APPROVAL OF THE COUNTY ENGINEER.
  6. USE STANDARD MANHOLE FRAMES AND COVERS, S-117, EXCEPT AS NOTED.
  7. USE STANDARD STRENGTH PIPE 60000-PSI-1000.
  8. USE CEMENT MORTAR OR "WEDGE-LOCK" OR "SPREAD-SEAL" FOR ALL V.C.P. JOINTS PER SPEC'S, SECS. 26 & 27.
  9. RESURFACE ALL TRENCH WITHIN PAVED AREAS TO MEET L.A. COUNTY ROAD DEPT. OR CALIF. STATE HIGHWAY REQUIREMENTS IN ACCORDANCE WITH PERMITS.
  10. ENCASE FOUR FEET OF SEWER AT POINTS OF INTERFERENCE WITH POLES, CASE IN, S-172.
  11. ALL STRUCTURES SHALL BE BUILT TO THE SPECIFICATIONS OF THE COUNTY ENGINEER.
  12. ALL STRUCTURES SHALL BE BUILT TO THE SPECIFICATIONS OF THE COUNTY ENGINEER.
  13. FOR ALLOWABLE LEAKAGE TEST USE FORMULA NO. 1, SPEC'S, SEC. 24.
  14. MANHOLE TOPS IN UNIMPROVED RIGHTS-OF-WAY TO BE SIX INCHES ABOVE FINISHED GRADE.
  15. THE CONTRACTOR SHALL NOTIFY THE CONSTRUCTION & STORM DRAIN DIVISION BY TELEPHONE, MADISON 9-27, EXT. 342, AT LEAST TWENTY-FOUR HOURS BEFORE STARTING ANY WORK UNDER THIS CONTRACT.
  16. STANDARD SPECIFICATIONS DATED MAY 12, 1928 APPLY IN THE CONSTRUCTION OF THIS PROJECT.

NO CHARGE  
 FOR CONNECTIONS  
 D. Higgins 12-4-57

DO NOT ISSUE PERMITS  
 UNTIL C.I. 1846 IS  
 COMPLETED

PROFILE ALIGNMENT AND GRADE OF P.C. 5316  
 SANITARY SEWERS PAGE 1  
 TO BE CONSTRUCTED IN J.N. 0351.99

WORKMAN MILL ROAD

PRIVATE CONTRACT NO. 5316

W.S. 37

2 SHEETS, 3 PAGES

SCALE: VERT. 1" = 4' HORIZ. 1" = 40'

NOV. 1958

PREPARED IN THE OFFICES OF

ROSE HILLS MEMORIAL PARK

28,723

FOR LEGEND SEE PLAN NO. S-A-64

NOTE: GRADES TO WHICH THIS IMPROVEMENT IS TO BE CONSTRUCTED ARE SHOWN ON PLANS AND PROFILES. GRADE POINTS FOR TOP OF CURBS, CENTER LINE OF STREETS, OR CENTER LINE OF ALLEYS ARE SHOWN BY CIRCLES ON PROFILES. AT ALL POINTS BETWEEN DESIGNATED POINTS THE GRADE SHALL BE ESTABLISHED SO AS TO CONFORM TO A STRAIGHT LINE DRAWN BETWEEN SAID DESIGNATED POINTS. ELEVATIONS ARE IN FEET ABOVE U.S.C. & G.S. SEA LEVEL DATUM OF 1929. THIS DRAWING AND THE DATA HEREON ARE HEREBY MADE A PART OF THE SPECIFICATIONS. WORK SHALL BE CONSTRUCTED ACCORDING TO SPECIFICATIONS ON FILE IN THE OFFICE OF THE COUNTY ENGINEER AND SHALL BE PROTECTED ONLY IN THE INTEREST OF THE COUNTY ENGINEER. BEFORE WORK CAN BE STARTED, THE CONTRACTOR MUST OBTAIN A PERMIT TO EXCAVATE IN COUNTY STREETS FROM THE L.A. COUNTY ROAD DEPT., DISTRICT OFFICE NO. 6, AND PAY A FEE WITH THE COUNTY ENGINEER, ROOM 524 POST OFFICE BUILDING, 330 SO. BROADWAY SUFFICIENT TO COVER THE COST OF CONSTRUCTION INSPECTION AND RECORD PLANS. APPROVAL OF THIS PLAN BY THE COUNTY OF LOS ANGELES DOES NOT CONSTITUTE A REPRESENTATION AS TO THE ACCURACY OF THE LOCATION OF OR THE EXISTENCE OR NON-EXISTENCE OF ANY UNDERGROUND UTILITY PIPE, OR STRUCTURE WITHIN THE LIMITS OF THIS PROJECT. THIS NOTE APPLIES TO ALL PAGES. IF WORK IS TO BE DONE BY A STATE HIGHWAY, A PERMIT MUST BE OBTAINED FROM THE STATE OF CALIFORNIA, DIVISION OF HIGHWAYS, 120 SOUTH SPRING STREET.

COUNTY OF LOS ANGELES, CALIFORNIA

APPROVED, JOHN A. LAMBE, COUNTY ENGINEER

APPROVED, C.E. COMPTON, CHIEF ENGINEER

BY: *C.E. Compton*  
 Asst. Sanitation Engineer

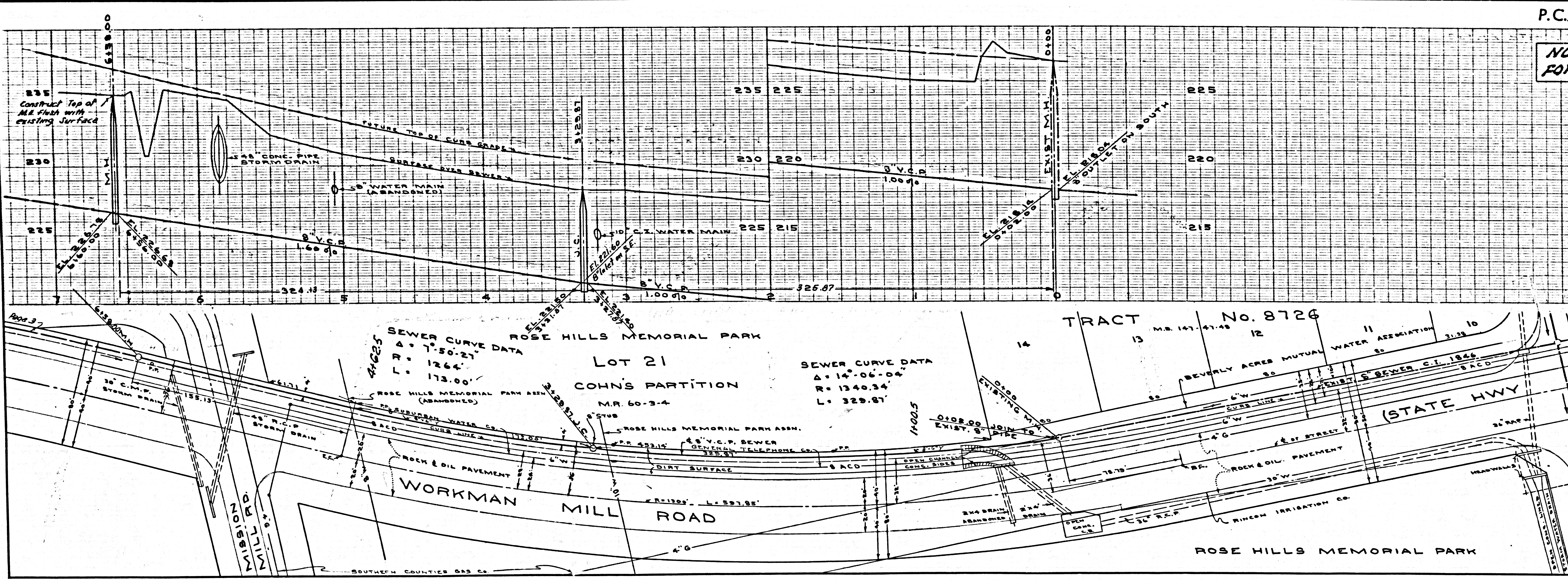
BY: *J. H. ...*  
 OFFICE ENGINEER

CHECKED BY: *B.F. ...*  
 OFFICE OF COUNTY ENGINEER, REG. C.E. NO. 11636

SUBMITTED BY: *John A. ...*  
 LOS CERRITOS REGIONAL ENGINEER, REG. C.E. NO. 3871

P.C. 5316 PAGE 2

NO CHARGE  
 FOR CONNECTIONS



28,724

SEWER CURVE DATA  
 $\Delta = 7^{\circ}50'21''$   
 $R = 1266'$   
 $L = 173.00'$

SEWER CURVE DATA  
 $\Delta = 14^{\circ}06'04''$   
 $R = 1340.34'$   
 $L = 329.87'$

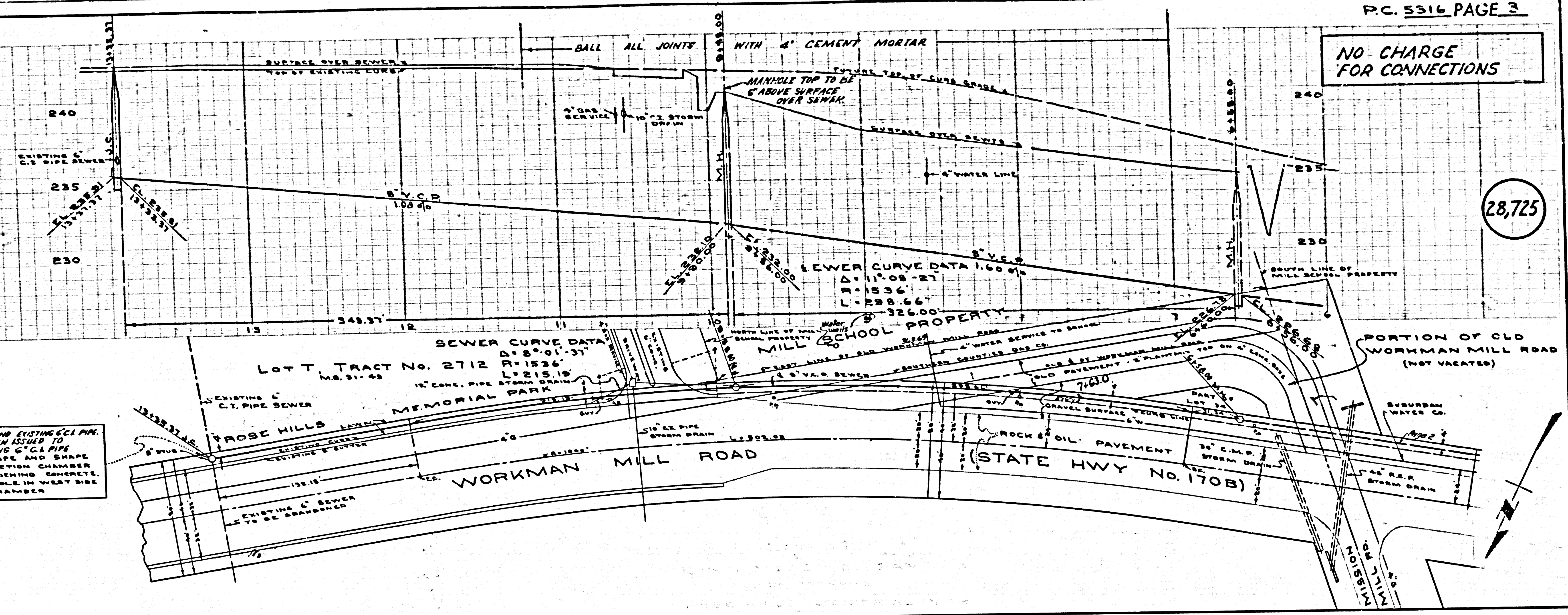
NO CHARGE FOR CONNECTIONS

28,725

CONSTRUCT J.C. AROUND EXISTING C.C.I. PIPE. WHEN PERMIT HAS BEEN ISSUED TO RECONNECT EXISTING C.C.I. PIPE BREAK OUT C.C.I. PIPE AND SHAPE BOTTOM OF JUNCTION CHAMBER WITH QUIK HARDENING CONCRETE. PLUS 6" PIPE HOLE IN WEST SIDE OF JUNCTION CHAMBER.

SEWER CURVE DATA  
D=8'-01'-37"  
R=153'-6"  
L=215'-19"  
ELEVATION 100.46

SEWER CURVE DATA 1.60  
D=11'-08'-27"  
R=153'-6"  
L=298'-66"  
ELEVATION 100.46



28,725