

D.M. - 47.5696 Lat. E. Curb of Oritaba Avenue and South Street 1's S. of Curb Return 4 E. Cor. of Oritaba Avenue & South Street. Elev. 50.763' (Bellflower Quad)

LAKWOOD BLDG. DIST. NO. 4.01

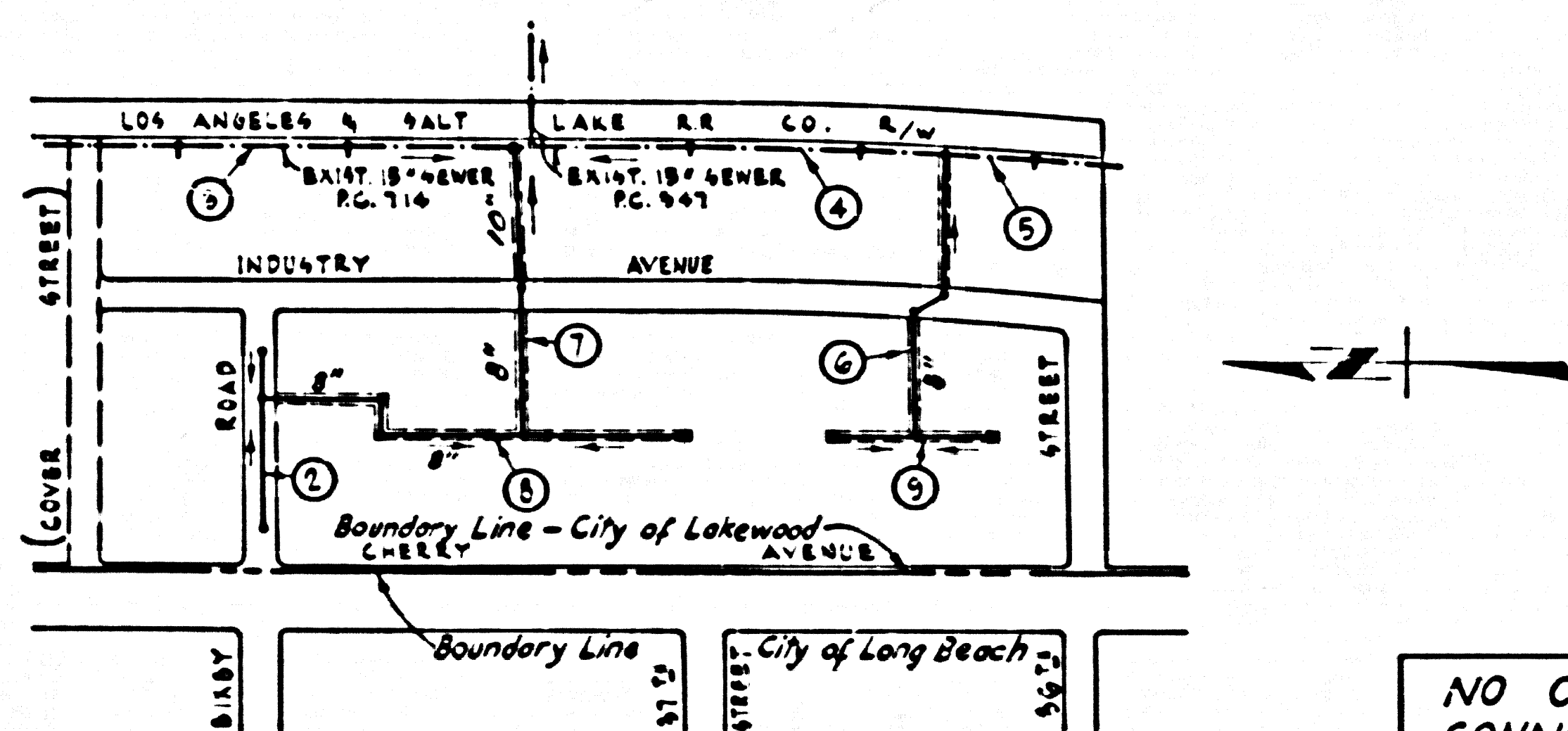
PROFILE ALIGNMENT AND GRADE OF P.C. 5319
SANITARY SEWERS PAGE 1
 TO BE CONSTRUCTED IN

TRACT No 25013
 PRIVATE CONTRACT NO. 5319

W.S. 30
 5 SHEETS, 9 PAGES
 SCALE: VERT. 1" = 4' HORIZ. 1" = 40'
 NOVEMBER, 1959
 PREPARED IN THE OFFICES OF
ENGINEERING SERVICE CORPORATION

28942

- NOTES
- PROVIDE STAKES ON THE PROPERTY LINE OR PROPERTY LINES IN QUADRANT AT RIGHT ANGLES TO THE SEWER LINE AT THE CENTER LINE OF EACH MANHOLE.
 - NO REPRESENTATIVE OF THE CITY ENGINEER WILL SURVEY OR LAY OUT ANY PORTION OF THE WORK.
 - THE OWNER OR HIS AUTHORIZED REPRESENTATIVE SHALL FURNISH THE CITY ENGINEER WITH GRADE SHEETS AND STATIONING FOR ALL HOUSE LATERALS AND Y BRANCHES AND SHALL PROVIDE STAKES FOR THEM AT THEIR PROPER LOCATIONS WITH STATIONING PLAINLY MARKED. ANY CHANGE IN LOCATION SHALL BE REQUESTED IN WRITING BY THE OWNER OR HIS REPRESENTATIVE.
 - THE PRIVATE ENGINEER SHALL FURNISH THE HOUSE LATERAL DEPTH AT THE PROPERTY LINE BELOW THE TOP OF CURB ELEVATION FOR EACH HOUSE LATERAL ON THE GRADE SHEET.
 - NO REVISIONS SHALL BE MADE IN THESE PLANS WITHOUT THE APPROVAL OF THE CITY ENGINEER.
 - USE STANDARD MANHOLE FRAMES AND COVERS, S-117, EXCEPT AS NOTED.
 - USE STANDARD STRENGTH PIPE.
 - USE CEMENT MORTAR OR "WEDGE-LOCK" OR "SPREAD-SEAL" JOINTS FOR ALL Y.C.P. JOINTS PER SPECS. SECS. 36 & 46.
 - RESURFACE ALL TRENCH WITHIN PAVED AREA TO MEET L.A. COUNTY ROAD DEPT. OR CALIF. STATE HIGHWAY REQUIREMENTS IN ACCORDANCE WITH PERMITS.
 - ENCASE FOUR FEET OF SEWER AT POINTS OF INTERFERENCE WITH POLLS, CASE III, S-172.
 - HOUSE LATERALS TO BE CONSTRUCTED WITH 1/8" RISE PER FOOT TO PROPERTY LINE OR R/W LINE.
 - ALL STRUCTURES SHALL BE BRICK SEWER STRUCTURES, S-104, EXCEPT AS NOTED.
 - FOR ALLOWABLE LEAKAGE TEST USE FORMULA NO. 1, SPECS. SEC. 36.
 - MANHOLE TOPS IN UNIMPROVED RIGHTS-OF-WAY TO BE 24" HIGHER ABOVE FINISHED GRADE.
 - THE CONTRACTOR SHALL NOTIFY THE CONSTRUCTION & STORM DRAIN DIVISION BY TELEPHONE, MADISON 9-474, EXT. 342, AT LEAST TWENTY-FOUR HOURS BEFORE STARTING ANY WORK UNDER THIS CONTRACT.



NO CHARGE FOR CONNECTIONS
 R. K. Highland 12-7-59

INDEX MAP
 Scale 1" = 400'
 TRACT No 25013
 P.C. 5319

ENGINEERING SERVICE CORPORATION
 1127 W. WASHINGTON BLVD.
 LOS ANGELES 15, CALIF. RI. 9-7281

REVISIONS		TRACED BY	W.B.
		DESIG'D BY	J.D.
		CK'D BY	A.A.M.
		SUBMITTED	
SUB STRUCTURES OK'D			
W. O. NO.	DWG. NO.	DATE	SCALE
703-21		Sept 1959	As shown

NOTE: GRADES TO WHICH THIS IMPROVEMENT IS TO BE CONSTRUCTED ARE SHOWN ON PLANS AND PROFILE. GRADE POINTS FOR TOP OF CURBS, CENTER LINE OF STREETS, OR CENTER LINE OF ALLEYS ARE SHOWN BY CIRCLES ON PROFILES. AT ALL POINTS BETWEEN DESIGNATED POINTS THE GRADE SHALL BE ESTABLISHED SO AS TO CONFORM TO A STRAIGHT LINE DRAWN BETWEEN SAID DESIGNATED POINTS.

ELEVATIONS ARE IN FEET ABOVE U.S.C. & G.S. SEA LEVEL DATUM OF 1929.

THIS DRAWING AND THE DATA HEREON ARE HEREBY MADE A PART OF THE SPECIFICATIONS.

WORK SHALL BE CONSTRUCTED ACCORDING TO SPECIFICATIONS ON FILE IN THE OFFICE OF THE CITY ENGINEER AND SHALL BE PROSECUTED ONLY IN THE PRESENCE OF THE CITY ENGINEER.

BEFORE WORK CAN BE STARTED, THE CONTRACTOR MUST OBTAIN A PERMIT TO EXCAVATE IN CITY STREETS FROM THE L.A. COUNTY ROAD DEPT., DISTRICT OFFICE NO. 18, AND MAKE A DEPOSIT WITH THE CITY OF LAKEWOOD \$2000 & CLEARANCE WARRANT. SUFFICIENT TO COVER THE COST OF CONSTRUCTION INSPECTION AND RECORD PLANS.

APPROVAL OF THIS PLAN BY THE CITY OF LAKEWOOD DOES NOT CONSTITUTE A REPRESENTATION AS TO THE ACCURACY OF THE LOCATION OR OF THE EXISTENCE OR NON-EXISTENCE OF ANY UNDERGROUND UTILITY PIPE, OR STRUCTURE WITHIN THE LIMITS OF THIS PROJECT. THIS NOTE APPLIES TO ALL PAGES.

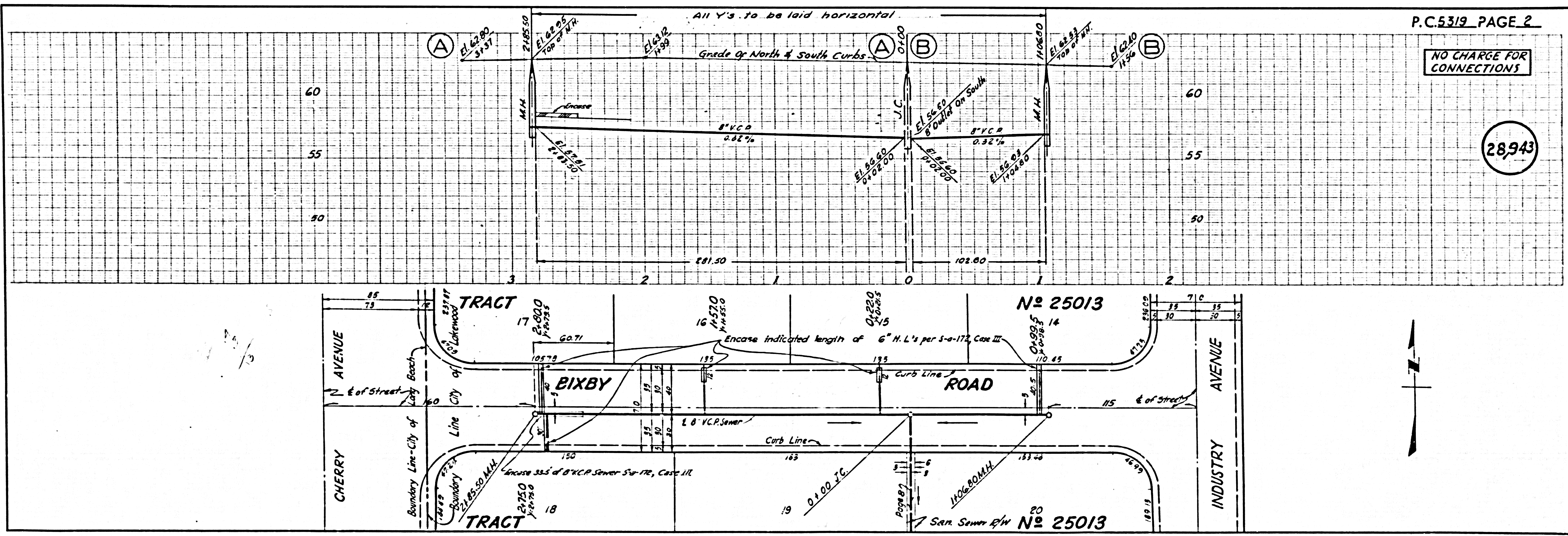
IF WORK IS TO BE DONE IN A STATE HIGHWAY, A PERMIT MUST BE OBTAINED FROM THE STATE OF CALIFORNIA, DIVISION OF HIGHWAYS, 130 SOUTH SPRING STREET.

CITY OF LAKEWOOD, CALIFORNIA

APPROVED, JOHN A. LAMBE, CITY ENGINEER
 APPROVED, C. R. COMPTON, CHIEF ENGINEER
 CO. SEAL, SER. NO. 3

BY: *C. E. P...* ASST. SANITATION ENGINEER
 BY: *J. H. ...* OFFICE ENGINEER
 CHECKED BY: *B. F. ...* 12-7-59
 OFFICE OF CITY ENGINEER, SER. NO. 11636

SUBMITTED BY: *John L. ...* 12-7-59
 LOS CERRITOS REGIONAL ENGINEER, REG. C. E. NO. 3871

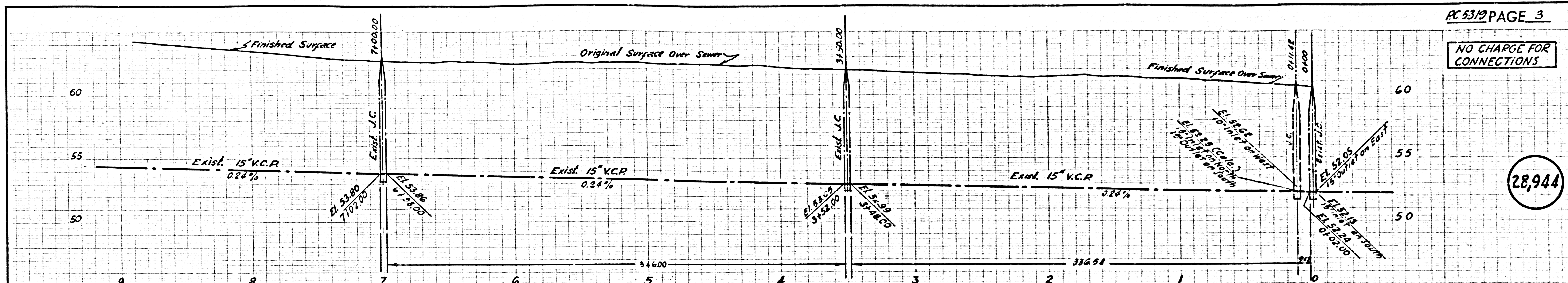


NO CHARGE FOR CONNECTIONS

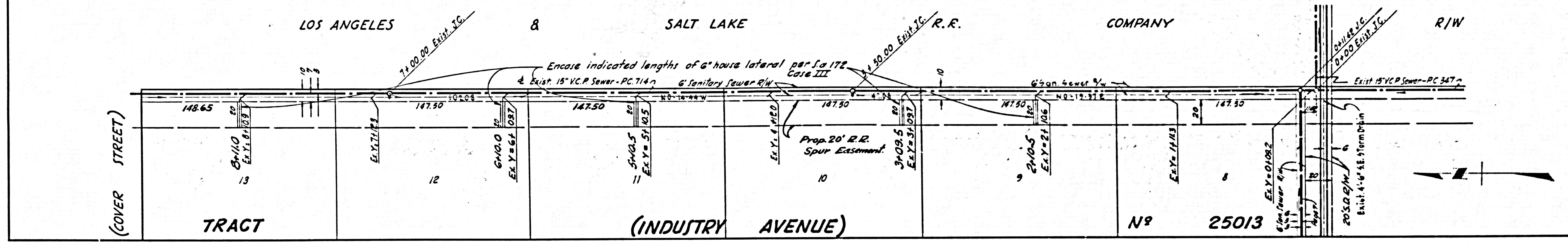
28943

P.C. 5319 PAGE 2

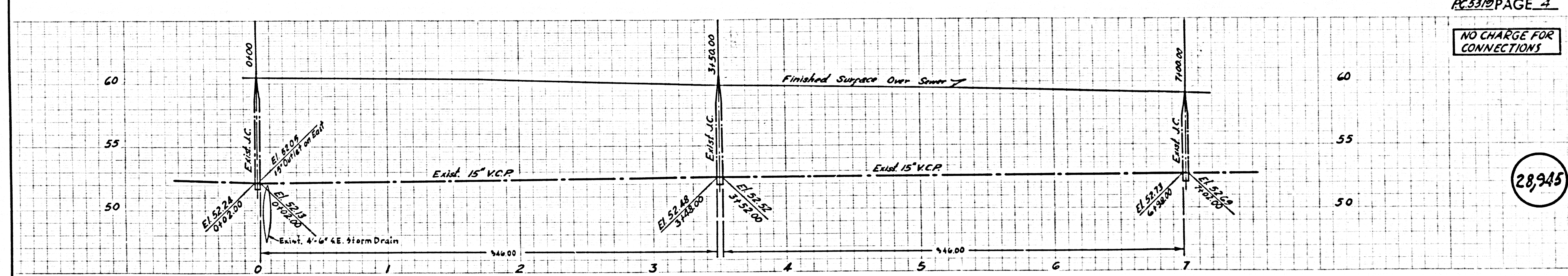
NO CHARGE FOR CONNECTIONS



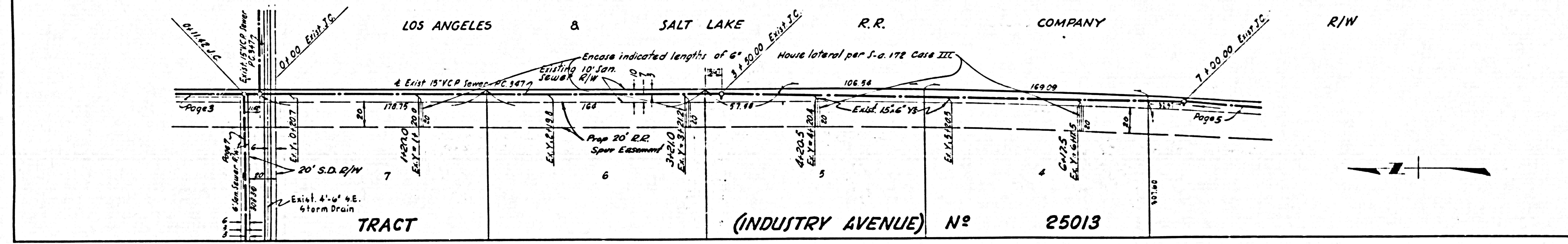
28,944



NO CHARGE FOR CONNECTIONS

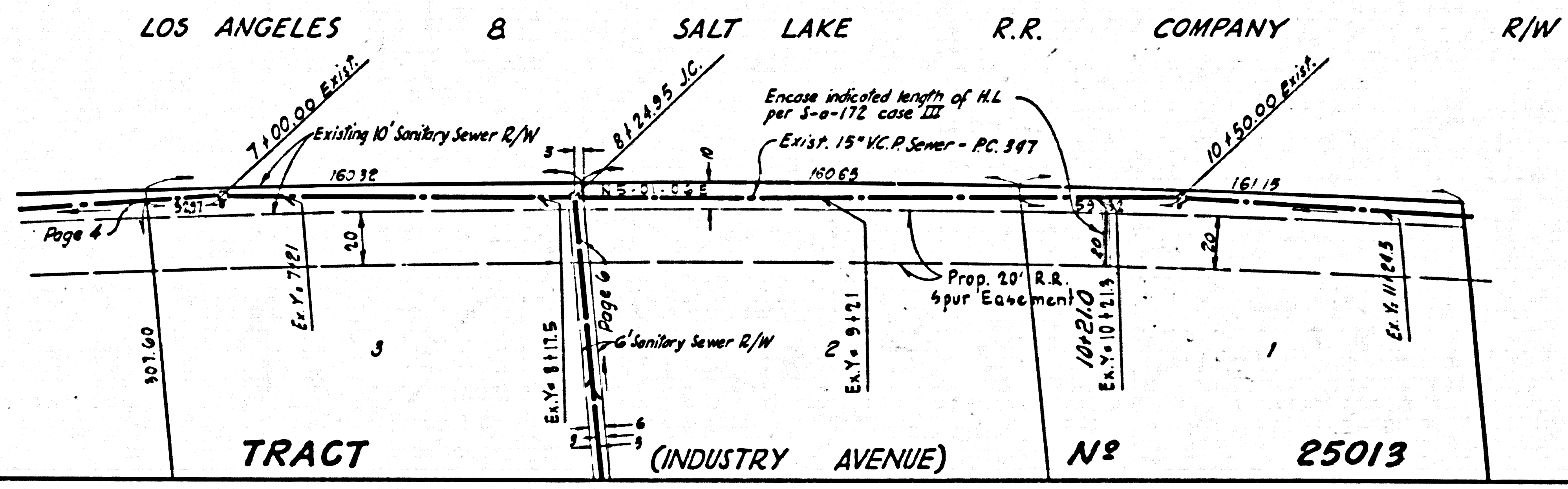
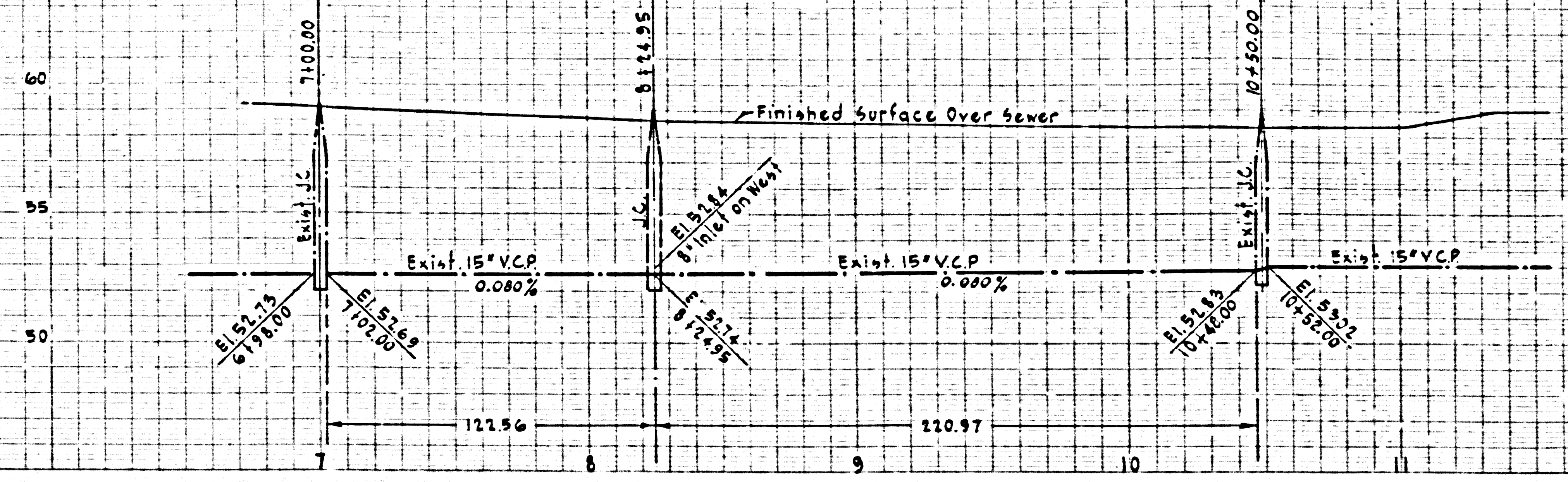


28,945



NO CHARGE FOR CONNECTIONS

28,946

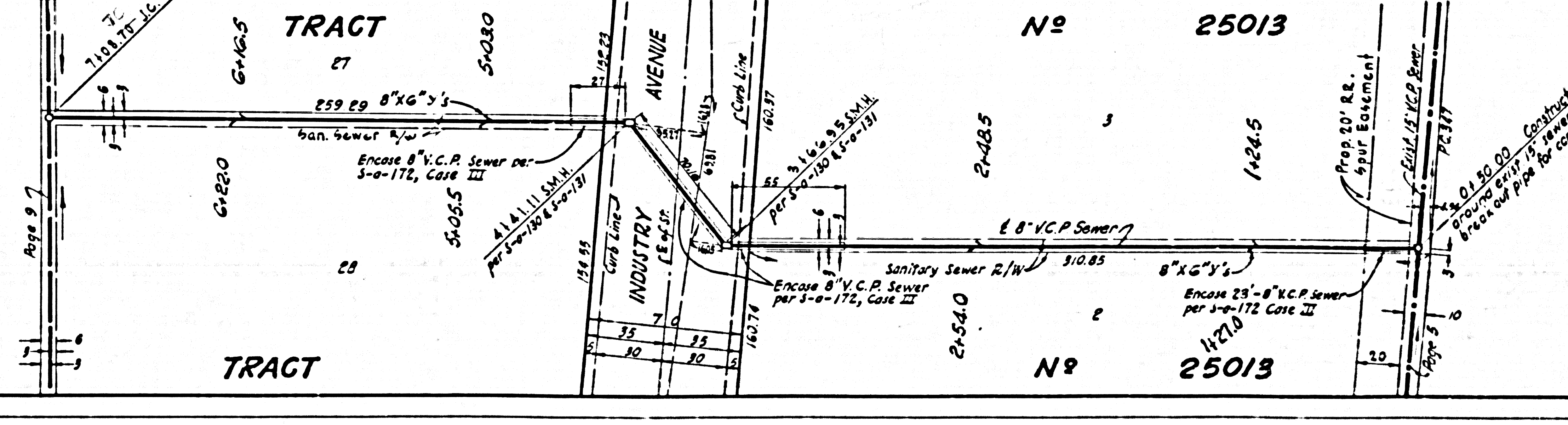
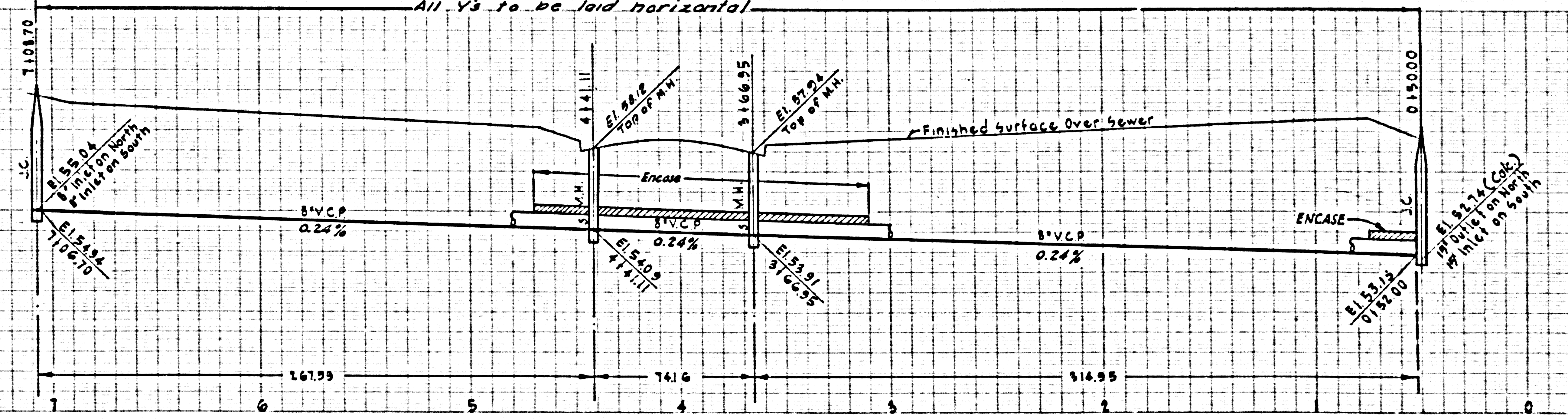


LOS ANGELES SALT LAKE R.R. COMPANY R/W

TRACT (INDUSTRY AVENUE) N^o 25013

NO CHARGE FOR CONNECTIONS

28,947



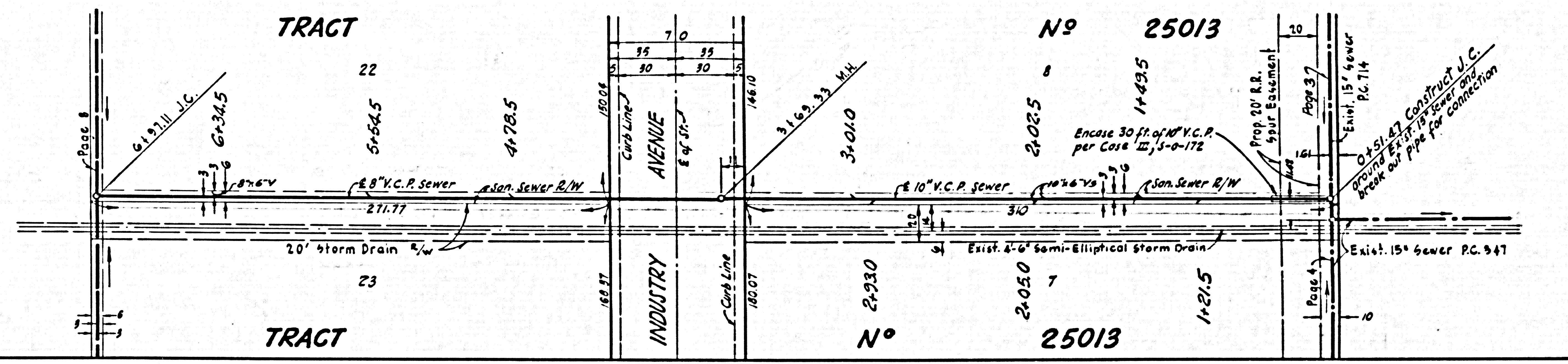
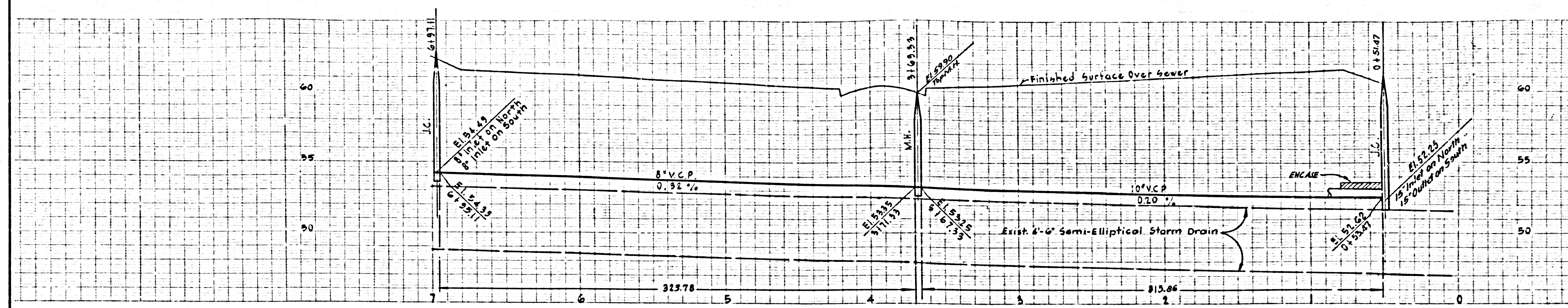
TRACT N^o 25013

TRACT N^o 25013

U.S.G.P. 100 BY CAL. BLUE PRINT SHED NO. 2

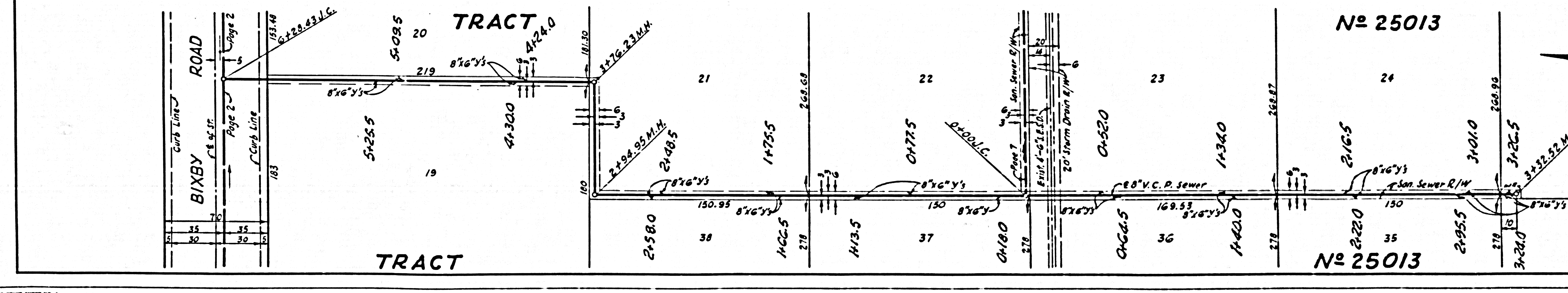
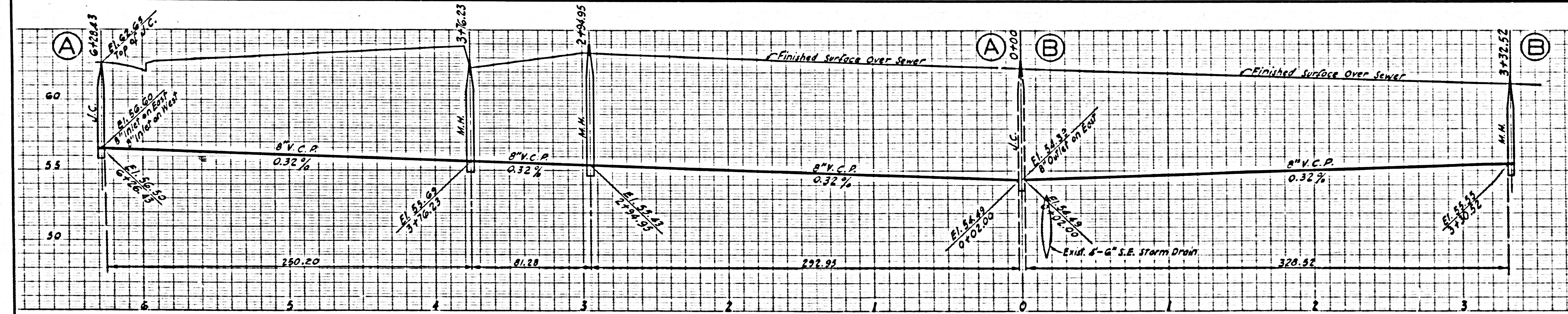
NO CHARGE FOR CONNECTIONS

28,948



NO CHARGE FOR CONNECTIONS

28,949



U.S.G. 100-100 GAL. BLUE PRINT SHEET NO. 1

NO CHARGE FOR CONNECTIONS

28,950

