

TRACT No 25235-25188

PRIVATE CONTRACT NO. 5321
 J.N. 035203
 W.S. 51

3 SHEETS, 6 PAGES

SCALE: VERT. 1" = 4' HORIZ. 1" = 40' SEPT., 1959

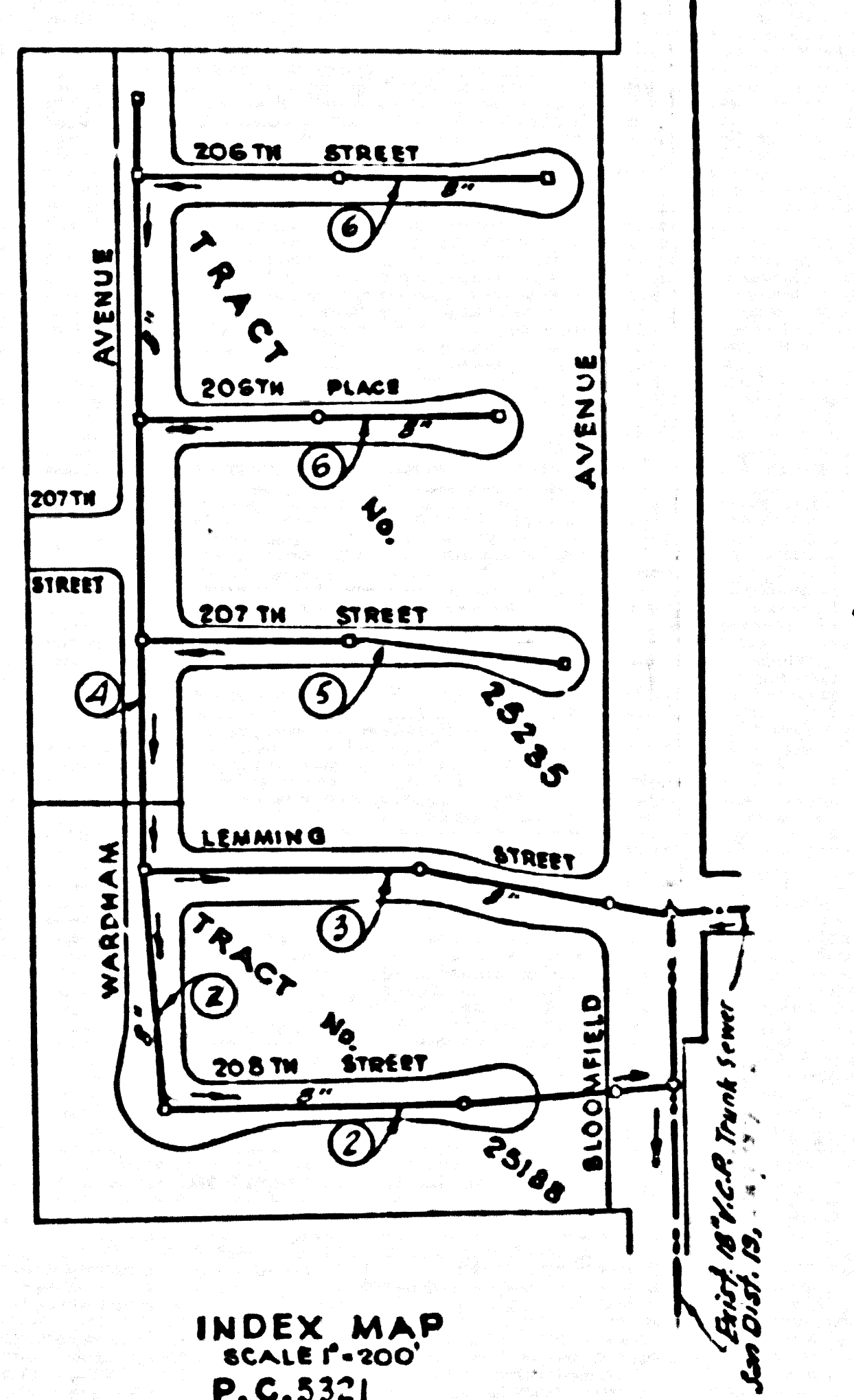
PREPARED IN THE OFFICES OF
 BARCLAY-PEARSON CO., INC.

By: *Edward L. Pearson*
 REG. C. E. NO. 8733

FOR LEGEND SEE PLAN NO. S-A-64

28,582

Fd. C.S. Manu. in well with cover
 @ E. Int. of Del Amo Blvd. and
 Bloomfield Ave. Elev. 39.203
 S.Y. 3404 (ARTERIA N.W.A.P.)



NO CHARGE FOR CONNECTIONS
 11-8-59

INDEX MAP
 SCALE 1" = 100'
 P.C. 5321
 J.N. 035203

- NOTES
- PROVIDE STAKES ON THE PROPERTY LINE OR PROPERTY LINES PRODUCED AT RIGHT ANGLES TO THE SEWER LINE AT THE CENTER LINE OF EACH MANHOLE.
 - NO REPRESENTATIVE OF THE COUNTY ENGINEER WILL SURVEY OR LAY OUT ANY PORTION OF THE WORK.
 - THE OWNER OR HIS AUTHORIZED REPRESENTATIVE SHALL FURNISH THE COUNTY ENGINEER WITH GRADE SHEETS AND STATIONING FOR ALL HOUSE LATERALS AND T-BRANCHES AND SHALL PROVIDE STAKES FOR THEM AT THEIR PROPER LOCATIONS WITH STATIONING PLAINLY MARKED. ANY CHANGE IN LOCATION SHALL BE REQUESTED IN WRITING BY THE OWNER OR HIS REPRESENTATIVE.
 - THE PRIVATE ENGINEER SHALL FURNISH THE HOUSE LATERAL DEPTH AT THE PROPERTY LINE BELOW THE TOP OF CURB ELEVATION FOR EACH HOUSE LATERAL ON THE GRADE SHEET.
 - NO REVISIONS SHALL BE MADE IN THESE PLANS WITHOUT THE APPROVAL OF THE COUNTY ENGINEER.
 - USE STANDARD MANHOLE FRAMES AND COVERS, 24" x 18", EXCEPT AS NOTED.
 - USE STANDARD STRENGTH PIPE.
 - USE CHEM-TIGHT OR "WEDGE-LOCK" OR "SPREAD-SEAL" FOR ALL V.C.P. JOINTS PER SPECS. SECS. 34 & 36.
 - RESURFACE ALL TRENCH WITHIN PAVED AREA TO MEET L.A. COUNTY ROAD DEPT. OF CALIF. STATE HIGHWAY REQUIREMENTS IN ACCORDANCE WITH PERMITS.
 - ENCASE FOUR FEET OF SEWER AT POINTS OF INTERFERENCE WITH POLES, CASE III, S-172.
 - ENCASE APPROX. 20' OF EXISTING 18" V.C.P. SEWER AT 208th STREET.
 - ALL STRUCTURES SHALL BE BRICK SEWER STRUCTURES, 6" x 14", EXCEPT AS NOTED.
 - FOR ALLOWABLE LEAKAGE TEST USE FORMULA NO. 1 - SPECS., SEC. 84.
 - MANHOLE TOPS IN UNIMPROVED RIGHTS-OF-WAY TO BE SIX INCHES ABOVE FINISHED GRADE.
 - THE CONTRACTOR SHALL NOTIFY THE CONSTRUCTION & STORM DRAIN DIVISION BY TELEPHONE, MADISON 8-4707, EXT. 343, AT LEAST TWENTY-FOUR HOURS BEFORE STARTING ANY WORK UNDER THIS CONTRACT.
 - STANDARD SPECIFICATIONS DATED MAY 15, 1958 APPLY IN THE CONSTRUCTION OF THIS PROJECT.
 - ALL THE LOCATIONS SHOWN FOR EXISTING SUBSTRUCTURES HAVE BEEN TAKEN FROM RECORDS AND THEIR CORRECTNESS AND COMPLETENESS IS IN NO WAY GUARANTEED. IT SHALL BE THE CONTRACTOR'S RESPONSIBILITY TO DEFINITELY LOCATE ALL UNDERGROUND LINES OF EVERY NATURE WHETHER SHOWN HEREON OR NOT, AND PROTECT THEM FROM DAMAGE. THE CONTRACTOR SHALL BEAR THE TOTAL EXPENSE OF REPAIR TO ANY LINE DAMAGED BY ANY OPERATION IN CONNECTION WITH THE PROSECUTION OF THIS WORK.
 - ALL WYES TO BE LAID HORIZONTAL AND HOUSE LATERALS TO BE CONSTRUCTED WITH 1/4" RISE PER FOOT TO PROPERTY LINE.
 - 6" FIGURES IN CIRCLES AT ENDS OF HOUSE LATERALS INDICATE DEPTH BELOW CURB GRADE.

NOTES

GRADES TO WHICH THIS IMPROVEMENT IS TO BE CONSTRUCTED ARE SHOWN ON PLANS AND PROFILES. GRADE POINTS FOR TOP OF CURB, CENTER LINE OF STREETS, OR CENTER LINE OF ALLEYS ARE SHOWN BY CIRCLES ON PROFILES AT ALL POINTS BETWEEN DESIGNATED POINTS. THE GRADE SHALL BE ESTABLISHED SO AS TO CONFORM TO A STRAIGHT LINE DRAWN BETWEEN SAID DESIGNATED POINTS.

ELEVATIONS ARE IN FEET ABOVE U.S.C. & G.S. SEA LEVEL DATUM ON 1929.

THIS DRAWING AND THE DATA HEREON ARE HEREBY MADE A PART OF THE SPECIFICATIONS OF THE COUNTY ENGINEER AND SHALL BE CONSIDERED AS SUCH. THE CONTRACTOR SHALL BE RESPONSIBLE FOR OBTAINING ALL NECESSARY PERMITS FROM THE L.A. COUNTY ROAD DEPT., DISTRICT OFFICE NO. 4, AND MAKE A DEPOSIT WITH THE COUNTY ENGINEER, ROOM 324, 400 AMERICAN BUILDING, 330 SO. BROADWAY, SUFFICIENT TO COVER THE COST OF CONSIDERING FOR INSPECTION AND RECORD PLANS.

APPROVAL OF THIS PLAN BY THE COUNTY OF LOS ANGELES DOES NOT CONSTITUTE A REPRESENTATION AS TO THE ACCURACY OF THE LOCATION OR THE EXISTENCE OR NON-EXISTENCE OF ANY UNDERGROUND UTILITY PIPE, OR STRUCTURE WITHIN THE LIMITS OF THIS PROJECT. THIS NOTICE APPLIES TO ALL PAGES.

IF WORK IS TO BE DONE IN A STATE HIGHWAY, A PERMIT MUST BE OBTAINED FROM THE STATE OF CALIFORNIA, DIVISION OF HIGHWAYS, 120 SOUTH SPRING STREET.

COUNTY OF LOS ANGELES, CALIFORNIA

APPROVED, JOHN A. LAMBE, COUNTY ENGINEER

APPROVED, C. R. SMYTH, CHIEF ENGINEER

BY: *C. E. Pearson* ASSISTANT SANITATION ENGINEER

BY: *J. L. Pearson* OFFICE ENGINEER

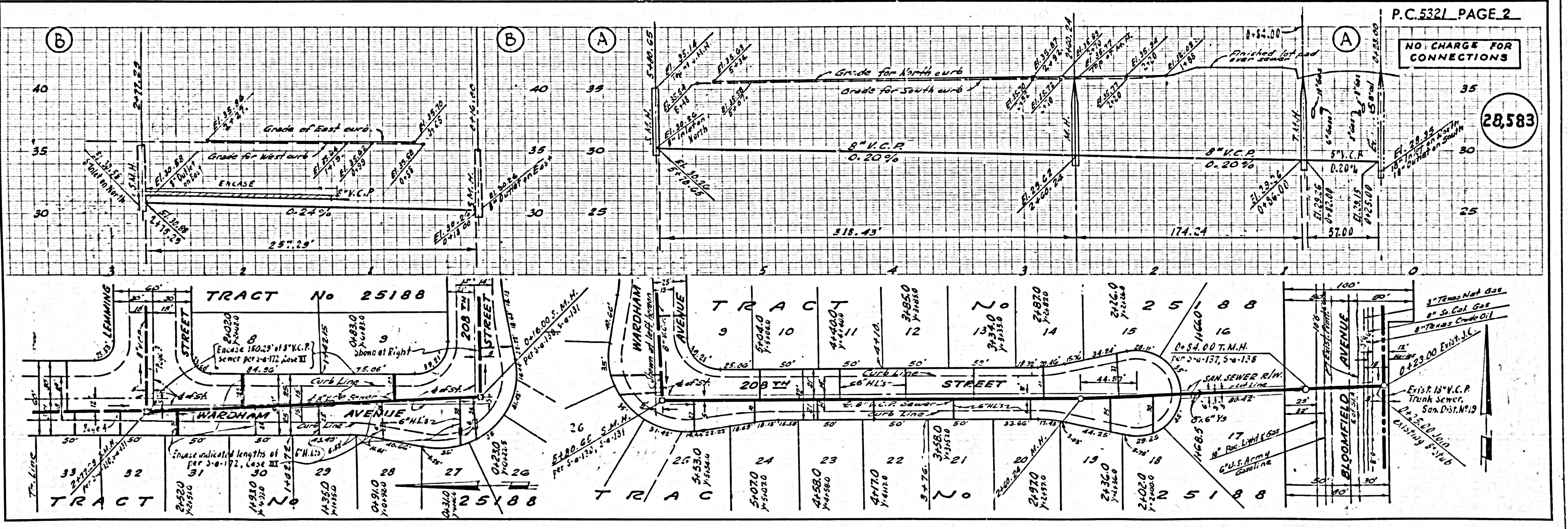
CHECKED BY: *B. F. Nading* 11-6-59

OFFICE OF COUNTY ENGINEER, REG. C. E. NO. 11636

SUBMITTED BY: *John L. Pearson* 11-3-59

JUS. CERRITOS REGIONAL ENGINEER, REG. C. E. NO. 871

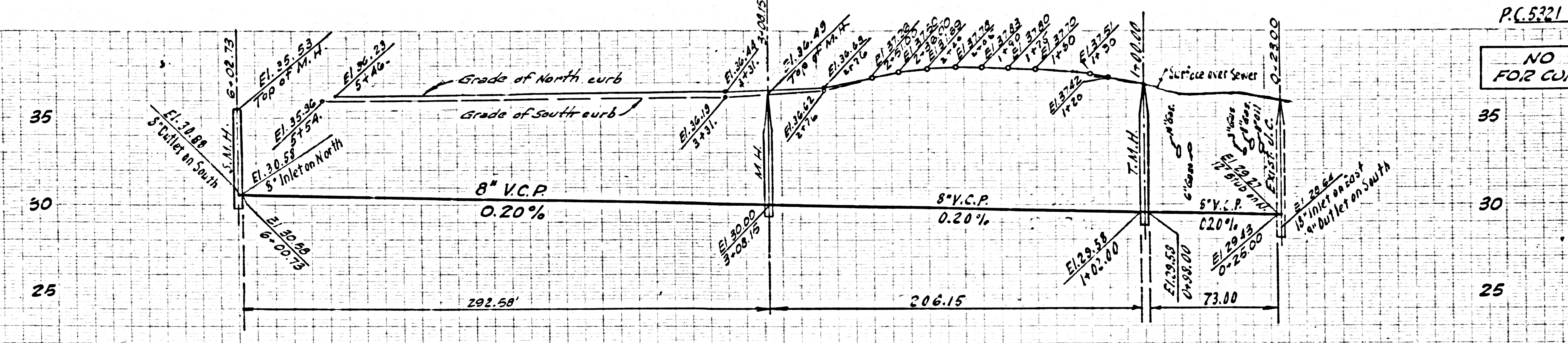
REVISION:
 Underground utility information added on pages 2 and 3.
 Approved: *B. F. Nading* 11-20-59
 Office of the County Engineer, Reg. C. E. No. 11636



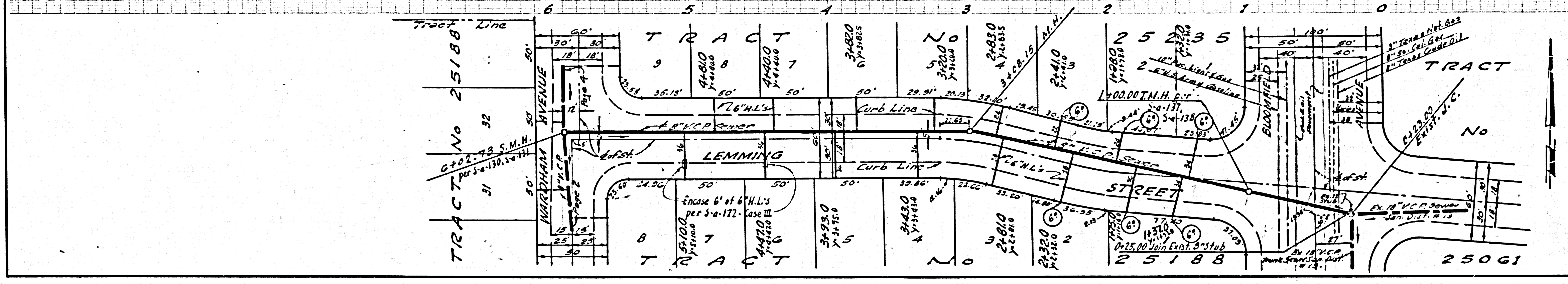
NO CHARGE FOR CONNECTIONS

28,583

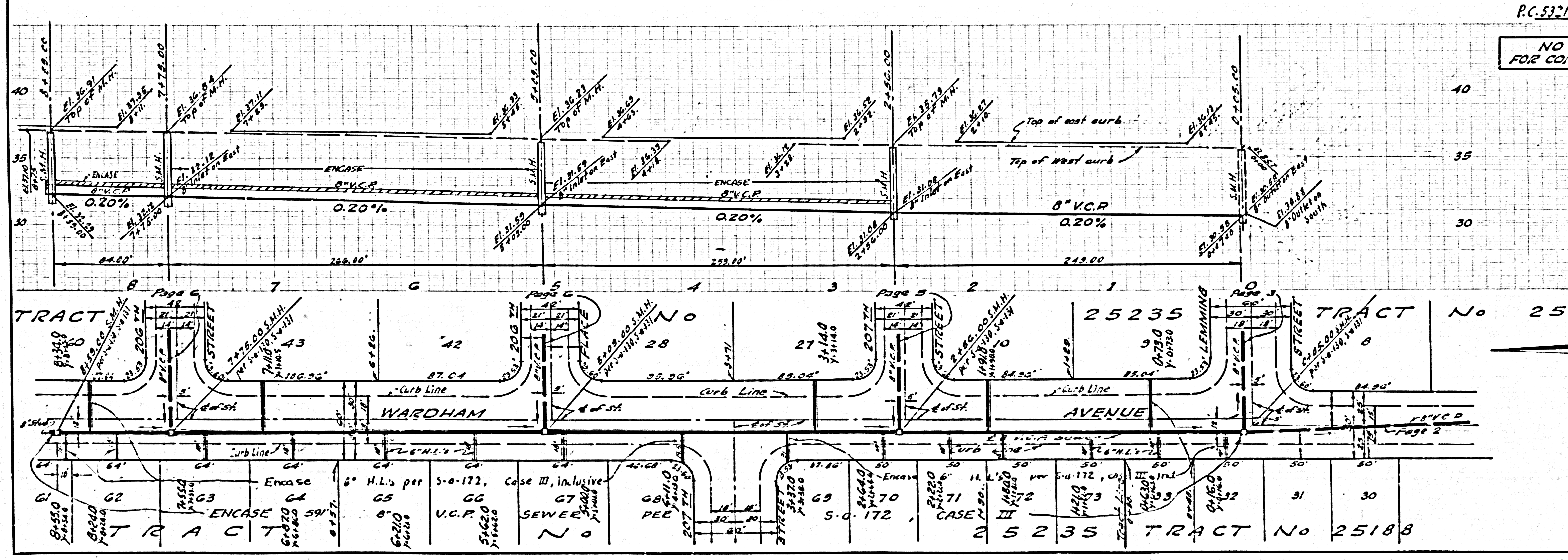
NO CHARGE FOR CONNECTIONS



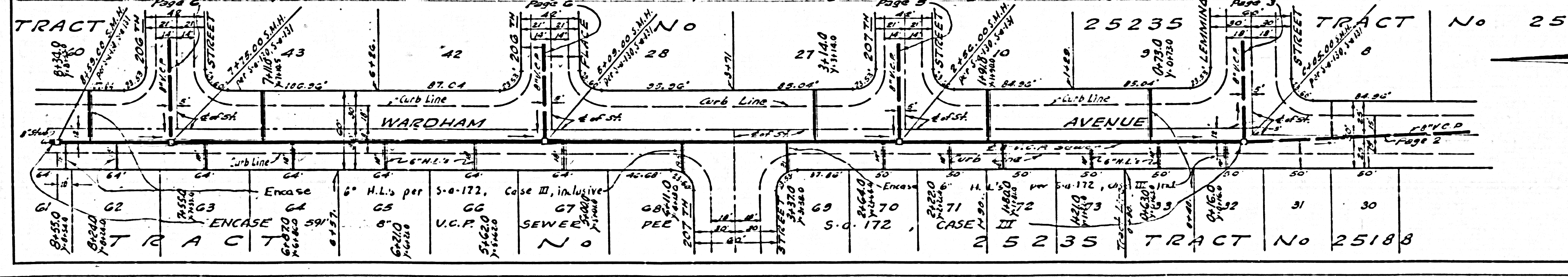
28,584



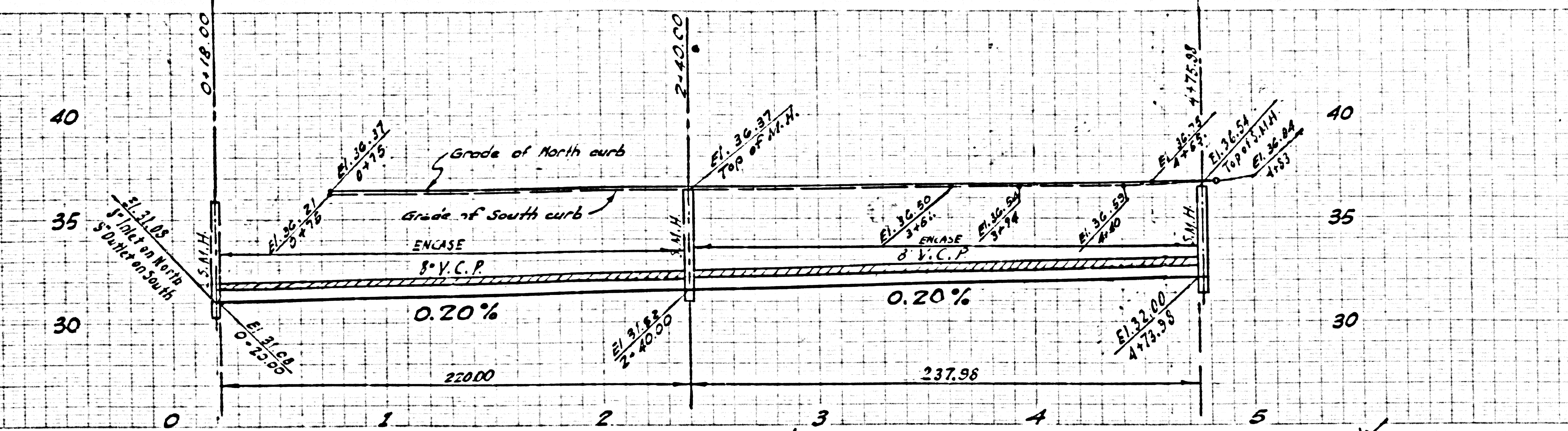
NO CHARGE FOR CONNECTIONS



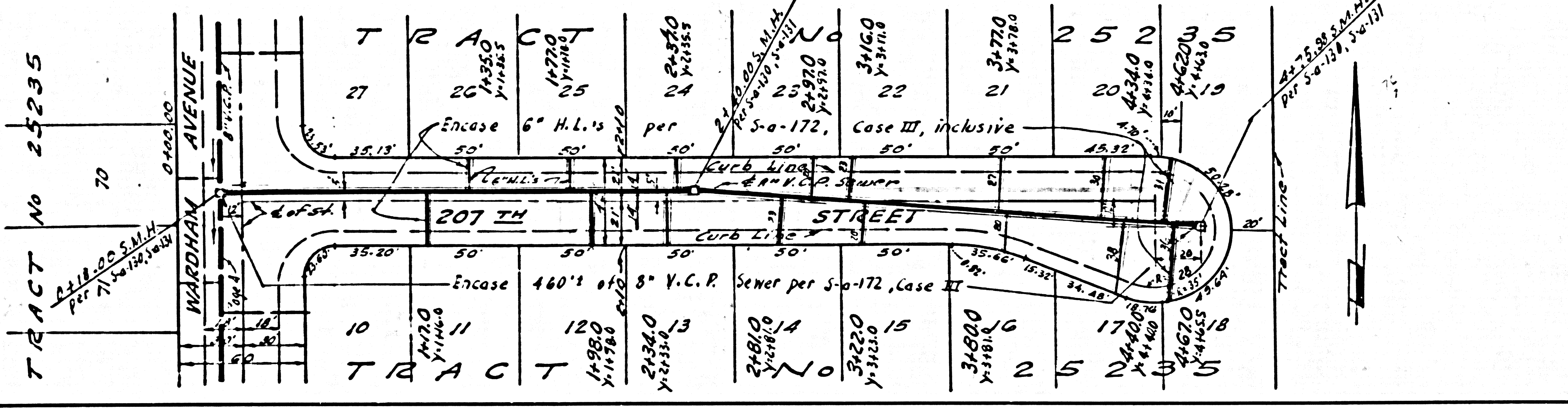
28,585



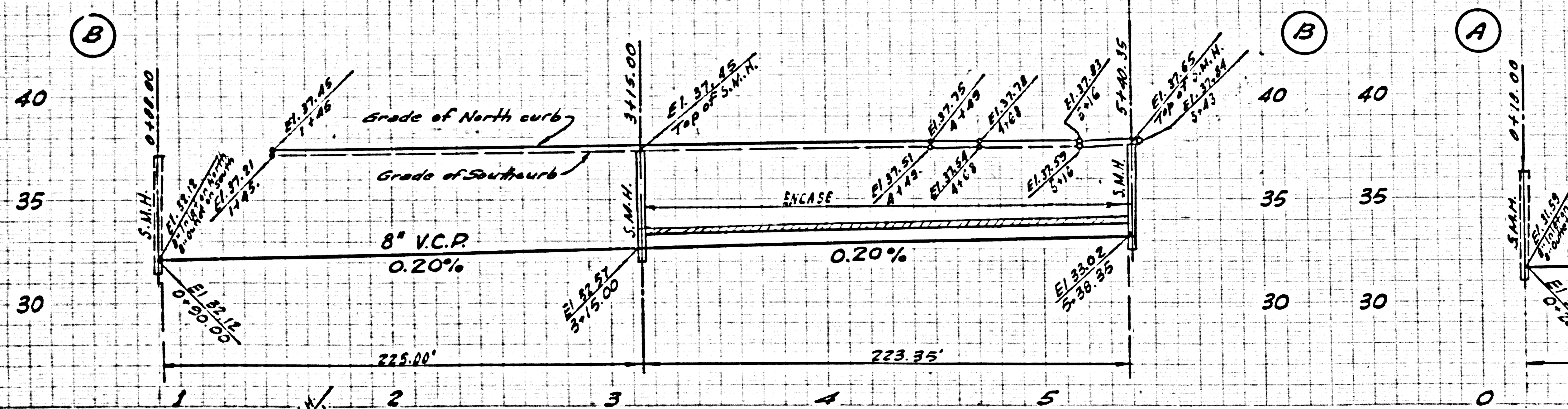
NO CHARGE FOR CONNECTIONS



28,586



NO CHARGE FOR CONNECTIONS



28,587

