

BENCH MARK (L.A.C. & M. No. 38-9)  
 Hacienda Blvd & Los Altos Drive on approx.  
 E of Los Altos Dr. 563 N.W. of E Int. at St.  
 C.S. Plan. in hand hole stamped "B.M. 38-9"  
 1954 R.E. = 63"  
 ELEVATION 436.986 (1954 ADJ.)

**PUEENTE BLDG. DIST. NO. 2**

PROFILE ALIGNMENT AND GRADE OF P.C. 5326  
**SANITARY SEWERS PAGE 1**  
 TO BE CONSTRUCTED IN J.N. 0352.07

**SANITARY SEWER RIGHT OF WAY  
 AND  
 LOS ALTOS SCHOOL SITE  
 PRIVATE CONTRACT NO. 5326**

W.S. 38  
 1 SHEET 2 PAGES

SCALE: VERT. 1"=4' HORIZ. 1"=40'  
 JANUARY, 1960

PREPARED IN THE OFFICES OF  
**KISTNER, WRIGHT & WRIGHT**  
 REG. C. E. NO. 6617

29,542

FOR LEGEND SEE PLAN NO. S-A-64

NOTE:  
 GRADES TO WHICH THE IMPROVEMENT IS TO BE CONSTRUCTED ARE SHOWN ON PLANS AND PROFILES. GRADE POINTS FOR TOP OF CURBS, CENTER LINE OF STREETS, OR CENTER LINE OF ALLEYS ARE SHOWN BY CIRCLES ON PROFILES. AT ALL POINTS BETWEEN DESIGNATED POINTS THE GRADE SHALL BE ESTABLISHED SO AS TO CONFORM TO A STRAIGHT LINE DRAWN BETWEEN SAID DESIGNATED POINTS.  
 ELEVATIONS ARE IN FEET ABOVE U.S.C. & G.S. SEA LEVEL UNLESS OTHERWISE NOTED.  
 THIS DRAWING AND THE DATA HEREON ARE HEREBY MADE A PART OF THE SPECIFICATIONS.  
 WORK SHALL BE CONSTRUCTED ACCORDING TO SPECIFICATIONS ON FILE IN THE OFFICE OF THE COUNTY ENGINEER AND SHALL BE PROSECUTED ONLY IN THE PRESENCE OF THE COUNTY ENGINEER.  
 BEFORE WORK CAN BE STARTED, THE CONTRACTOR MUST OBTAIN A PERMIT TO EXCAVATE IN COUNTY STREETS FROM THE L.A. COUNTY ROAD DEPT. AND FROM THE COUNTY ENGINEER, ROOM 504 SAN ANTONIO BLDG. 333 SO. BROADWAY FOR CONSTRUCTION INSPECTION.  
 APPROVAL OF THIS PLAN BY THE COUNTY OF LOS ANGELES DOES NOT CONSTITUTE A REPRESENTATION AS TO THE ACCURACY OF THE LOCATION OR THE EXISTENCE OR NON-EXISTENCE OF ANY UNDERGROUND UTILITY PIPE, OR STRUCTURE WITHIN THE LIMITS OF THIS PROJECT. THIS NOTE APPLIES TO ALL PAGES.  
 IF WORK IS TO BE DONE IN A STATE HIGHWAY, A PERMIT MUST BE OBTAINED FROM THE STATE OF CALIFORNIA, DIVISION OF HIGHWAYS, 120 SOUTH SPRING STREET.

COUNTY OF LOS ANGELES, CALIFORNIA

APPROVED, JOHN A. LAMBE, COUNTY ENGINEER

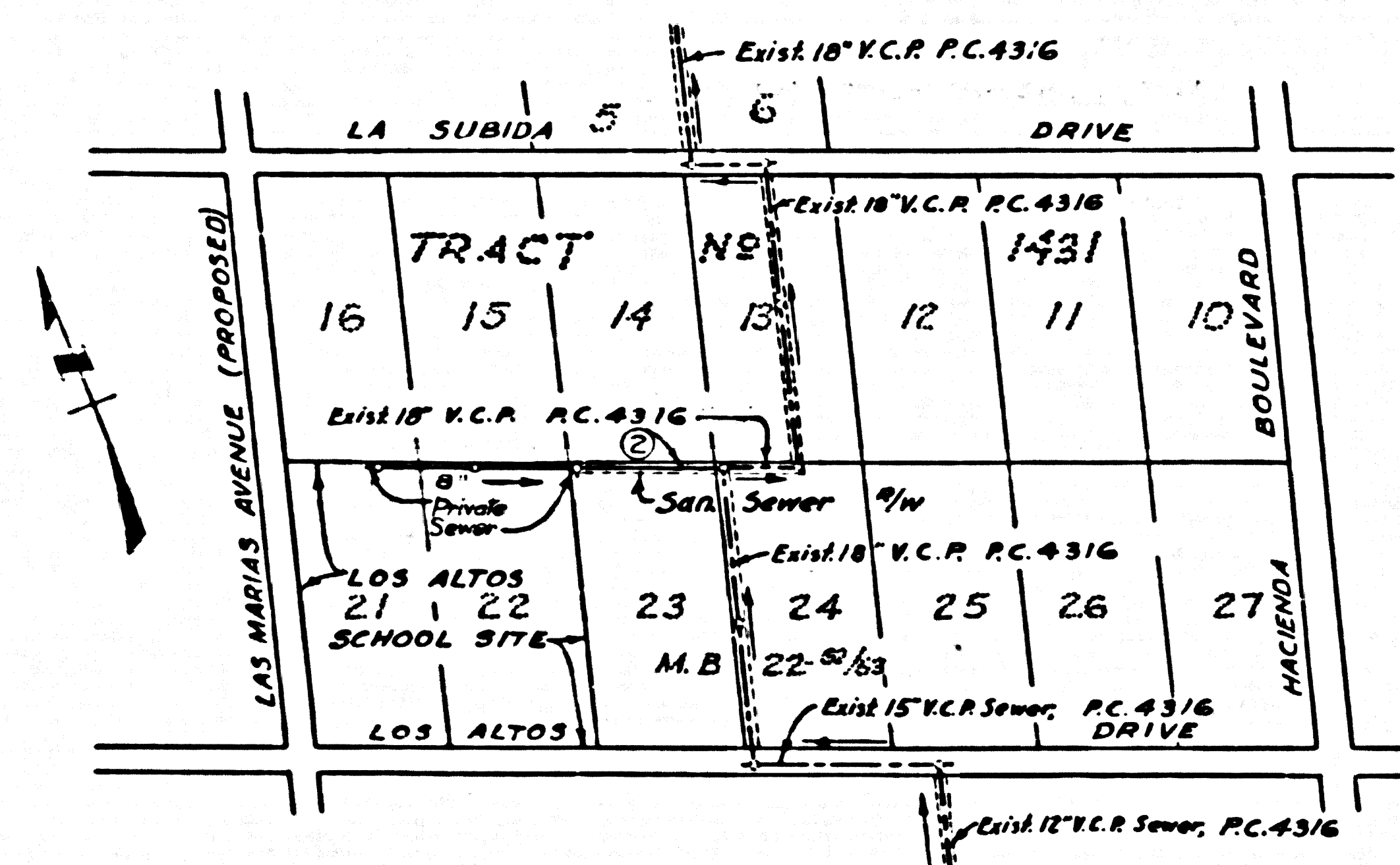
APPROVED, C.R. COMPTON, CHIEF ENGINEER

BY: *E.E. Priddy*  
 4212 SANITATION ENGINEER

BY: *J. P. Williams*  
 OFFICE ENGINEER

CHECKED BY: *J.C. Diller* 2-16-60  
 OFFICE OF COUNTY ENGINEER, BLDG. C. E. NO. 3466

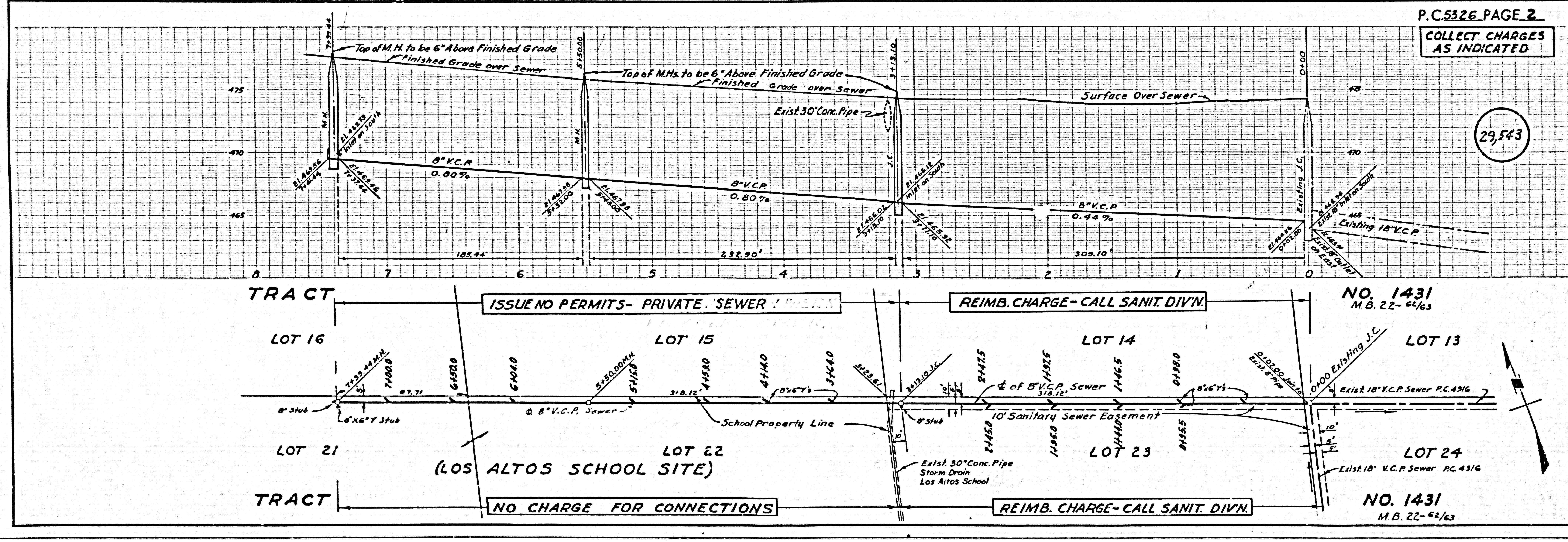
SUBMITTED *W.C. Reinhardt*  
 SAN DIMAS REGIONAL ENGINEER



- NOTES:**
- PROVIDE STAKES, ON THE PROPERTY LINE OR PROPERTY LINES PRODUCED AT RIGHT ANGLES TO THE SEWER LINE AT THE CENTER LINE OF EACH MANHOLE.
  - NO REPRESENTATIVE OF THE COUNTY ENGINEER WILL SURVEY OR LAYOUT ANY PORTION OF THE WORK.
  - THE OWNER OR HIS AUTHORIZED REPRESENTATIVE SHALL FURNISH THE COUNTY ENGINEER WITH GRADE SHEETS AND STATION FOR ALL HOUSE LATERALS AND Y BRANCHES AND SHALL PROVIDE STAKES FOR THEM AT THEIR PROPER LOCATIONS WITH STATIONING PLAINLY MARKED. ANY CHANGE IN LOCATION SHALL BE REQUESTED IN WRITING BY THE OWNER OR HIS REPRESENTATIVE.
  - NO REVISIONS SHALL BE MADE IN THESE PLANS WITHOUT THE APPROVAL OF THE COUNTY ENGINEER.
  - USE STANDARD MANHOLE FRAMES AND COVERS, S.A.117
  - USE STANDARD STRENGTH PIPE
  - USE CEMENT MORTAR "WEDGE-LOCK" OR "SPEED-SEAL" FOR ALL V.C. PIPE JOINTS PER SPECS. SECS. 5-144
  - RESURFACE ALL TRENCH WITHIN PAVED AREA TO MEET I. A. COUNTY ROAD DEPT. OR CALIF. STATE HIGHWAY DEPT. REQUIREMENTS IN ACCORDANCE WITH PERMITS.
  - ENCASE FOUR FEET OF SEWER AT POINTS OF INTERFERENCE WITH POLES, CASE SEC. 5-2-172.
  - HOUSE LATERALS TO BE CONSTRUCTED WITH INVERTS AT PROPOSED FINISHED GRADE UNLESS OTHERWISE NOTED.
  - ALL STRUCTURES SHALL BE BRICK SEWER STRUCTURES, S.A.104
  - FOR ALLOWABLE LEAKAGE TEST USE FORMULA NO. 1 SPECS. SEC. 5-4.
  - MANHOLE TOPS IN UNIMPROVED RIGHTS-OF-WAY TO BE 6" ABOVE FINISHED GRADE.
  - THE CONTRACTOR SHALL NOTIFY THE CONSTRUCTION AND STORM DRAIN DIVISION BY TELEPHONE, MADISON 5-6747, EXT. 362 AT LEAST TWENTY-FOUR HOURS BEFORE STARTING ANY WORK UNDER THIS CONTRACT.
  - STANDARD SPECIFICATIONS DATED JAN. 1, 1960 APPLY IN THE CONSTRUCTION OF THIS PROJECT.

**COLLECT CHARGES  
 AS INDICATED**  
*7.77 5-19-60*

**COLLECT CHARGES  
 AS INDICATED**



29,543

ISSUE NO PERMITS- PRIVATE SEWER

REIMB. CHARGE- CALL SANIT. DIV'N

NO. 1431  
 M.B. 22-62/63

NO CHARGE FOR CONNECTIONS

REIMB. CHARGE- CALL SANIT. DIV'N

NO. 1431  
 M.B. 22-62/63