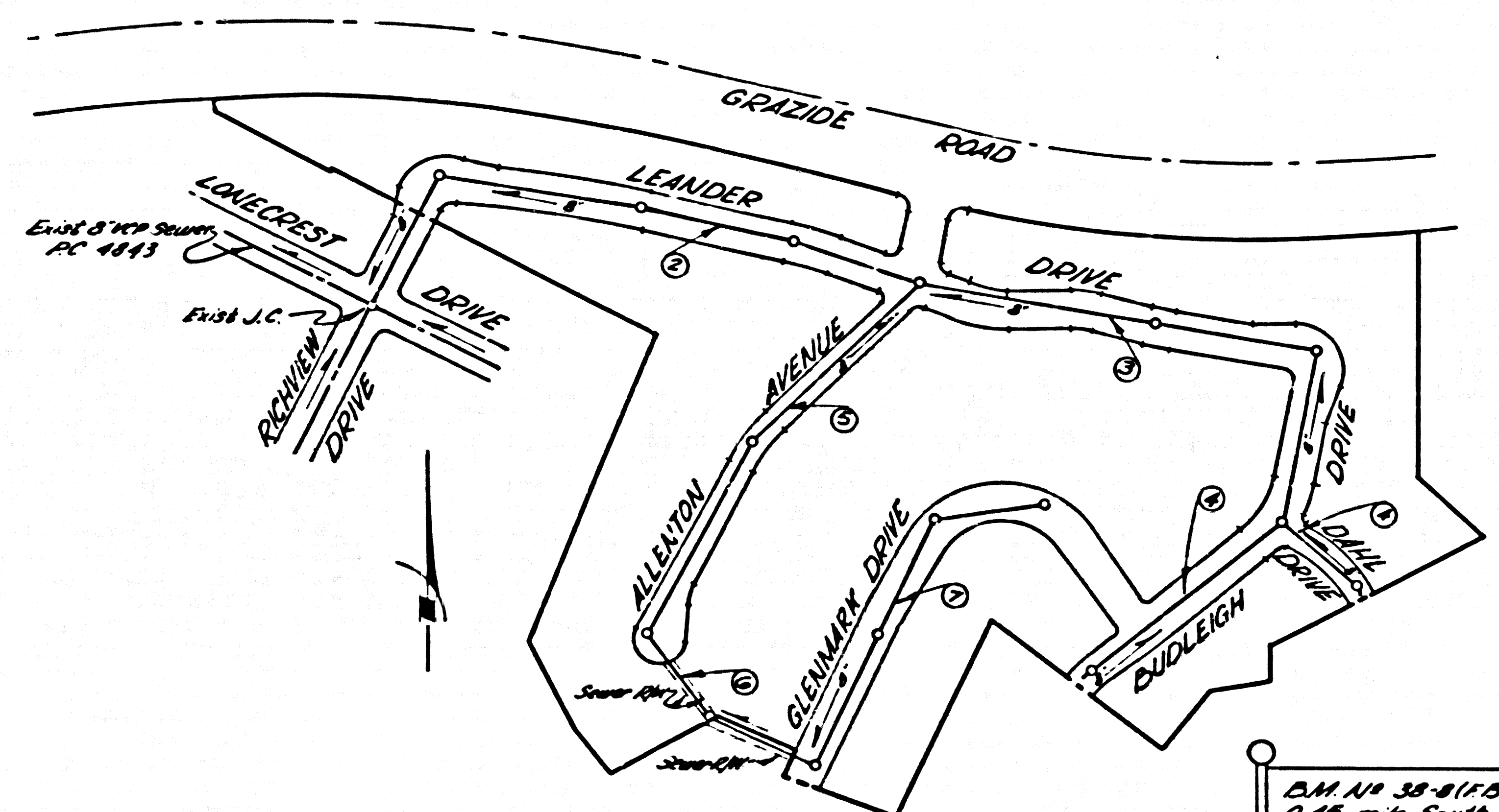


PUENTE BLDG. DIST. NO. 2

PROFILE ALIGNMENT AND GRADE OF P.C. 5329  
 SANITARY SEWERS PAGE 1  
 TO BE CONSTRUCTED IN TRACT NO 24451  
 J.N. 0352.09

PRIVATE CONTRACT NO. 5329  
 W.S. 38  
 7 SHEETS; 7 PAGES  
 SCALE: VERT. 1" = 4' FEBRUARY 1960  
 HORIZ. 1" = 40'  
 PREPARED IN THE OFFICES OF  
 J.F. DAVIDSON, C.E.  
 REG. C. E. NO. 862  
 FOR LEGEND SEE PLAN NO. S-A-64

29,525



D.M. NO. 38-8 (P.B. 1359-14) Hacienda Boulevard 0.45 mile South of Los Altos Drive, 8th & 9th of the 7th curve South of Los Altos Drive, 49' E 1/4 from E. pavement 20.7 W 1/4 from pole N 44.109E, a 1st C.S. Monument in handhole stamp of County Surveyor Monument R.E. 2177. Elev. 562.274, 1954 adjusted elevation.

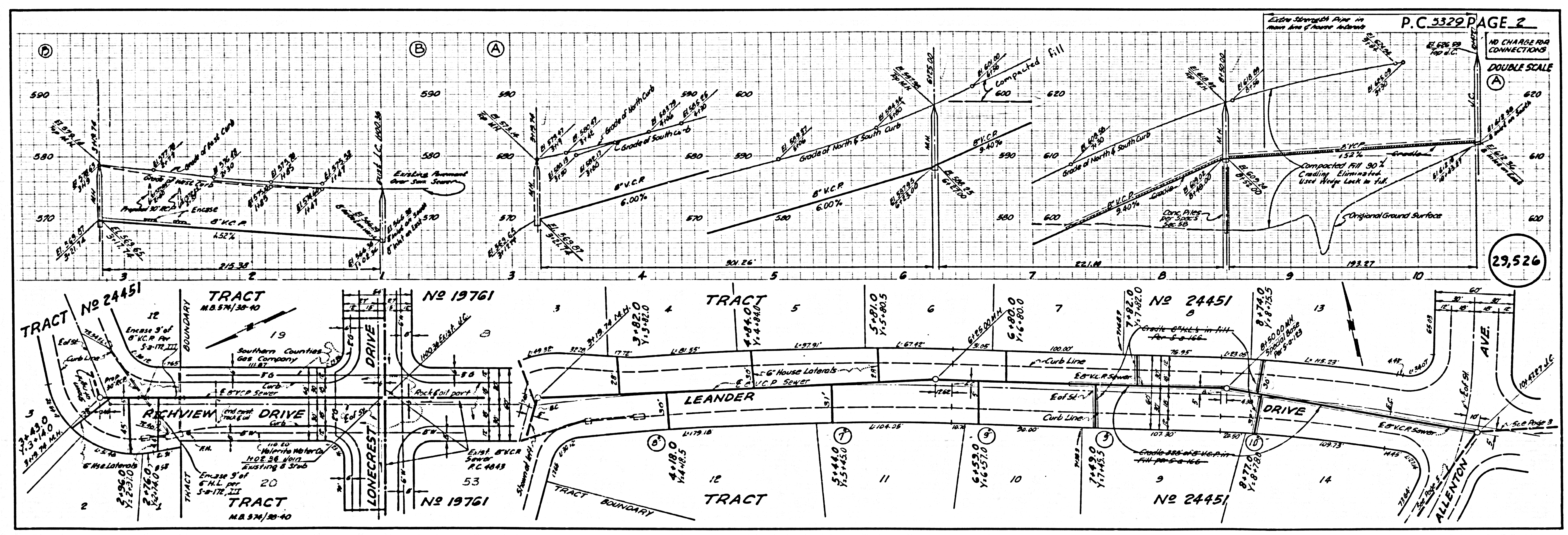
- NOTES:
1. PROFILE STAKES ON THE PROPERTY LINE OR PROPERTY LINES PRODUCED AT RIGHT ANGLES TO THE SEWER LINE AT THE CENTER LINE OF EACH MANHOLE.
  2. NO REPRESENTATIVE OF THE COUNTY ENGINEER WILL SURVEY OR LAY OUT ANY PORTION OF THE WORK.
  3. THE OWNER OR HIS AUTHORIZED REPRESENTATIVE SHALL FURNISH THE COUNTY ENGINEER WITH GRACE SHEETS AND STATIONING FOR ALL HOUSE LATERALS AND Y BRANCHES AND SHALL PROVIDE STAKES FOR THEM AT THEIR PROPER LOCATIONS WITH STATIONING PLAINLY MARKED. ANY CHANGE IN LOCATION SHALL BE REQUESTED IN WRITING BY THE OWNER OR HIS REPRESENTATIVE.
  4. THE PRIVATE ENGINEER SHALL FURNISH THE HOUSE LATERAL DEPTH AT THE PROPERTY LINE BELOW THE TOP OF CURB ELEVATION FOR EACH HOUSE LATERAL ON THE GRADE SHEET.
  5. NO REVISIONS SHALL BE MADE IN THESE PLANS WITHOUT THE APPROVAL OF THE COUNTY ENGINEER.
  6. USE STANDARD MANHOLE FRAMES AND COVERS, S-117, SPEC. 5-109-10.
  7. USE STANDARD STRENGTH PIPE EXCEPT AS NOTED.
  8. USE CEMENT MORTAR OR "WEDGE-LOCK" OR "SPEED-SEAL" FOR ALL V.C.P. JOINTS PER SPEC. SECS. 36 & 40.
  9. RESURFACE ALL TRENCH WITHIN PAVED AREA TO MEET L.A. COUNTY ROAD DEPT. OR CALIF. STATE HIGHWAY REQUIREMENTS IN ACCORDANCE WITH PERMITS.
  10. ENCASE FOUR FEET OF SEWER AT POINTS OF INTERFERENCE WITH POLES, CASE III, S-172.
  11. HOUSE LATERALS TO BE CONSTRUCTED WITH INFENTS AT PROPERTY LINE 6" FEET BELOW CURB GRADE, EXCEPT AS NOTED.
  12. ALL STRUCTURES SHALL BE BRICK SEWER STRUCTURES, S-104.
  13. FOR ALLOWABLE LEAKAGE TEST USE FORMULA NO. 1, SPEC. SEC. 54.
  14. MANHOLE TOPS IN UNIMPROVED RIGHTS-OF-WAY TO BE SIX INCHES ABOVE FINISHED GRADE.
  15. THE CONTRACTOR SHALL NOTIFY THE CONSTRUCTION & STORM DRAIN DIVISION BY TELEPHONE, MADISON 3-4747, EXT. 262, AT LEAST TWENTY-FOUR HOURS BEFORE STARTING ANY WORK UNDER THIS CONTRACT.
  16. (A) All construction will be permitted in 7' wide areas unless acceptable certification is submitted to the Construction Division of the County Engineer's Department that the proposed construction is greater than 60%.  
 (B) If compaction is less than 90%, the sewer must be cradled as shown on plans per S-1-166.  
 (C) If compaction is greater than 90%, neither cradling nor special manhole bases will be required, however, joint compound or "Wedge-lock" or "Speed-seal" must be substituted for Cement Mortar for all joints in filled areas.
  17. Standard Specifications dated January 1, 1960 apply in the construction of this project.
  18. Figures in circles at ends of house laterals indicate depth below curb grade.
  19. Figures in circles at ends of house laterals indicate house laterals shall be constructed with 1/2" rise per foot to property line.

COLLECT CHARGES AS INDICATED  
 T. J. McQuinn 4-14-60

NOTE:  
 GRADES TO WHICH THIS IMPROVEMENT IS TO BE CONSTRUCTED ARE SHOWN ON PLANS AND PROFILES. GRADE POINTS FOR TOP OF CURBS, CENTER LINE OF STREETS OR CENTER LINE OF ALLEYS ARE SHOWN BY CIRCLES ON PROFILES. AT ALL POINTS BETWEEN DESIGNATED POINTS THE GRADE SHALL BE ESTABLISHED SO AS TO CONFORM TO A STRAIGHT LINE DRAWN BETWEEN SAID DESIGNATED POINTS.  
 ELEVATIONS ARE IN FEET ABOVE M.S.L. & 6' SEA LEVEL DATUM OF 1929.  
 THIS DRAWING AND THE DATA HEREON ARE HEREBY MADE A PART OF THE SPECIFICATIONS.  
 WORK SHALL BE CONSTRUCTED ACCORDING TO SPECIFICATIONS ON FILE IN THE OFFICE OF THE COUNTY ENGINEER AND SHALL BE PROTECTED ONLY IN THE PRESENCE OF THE COUNTY ENGINEER.  
 BEFORE WORK CAN BE STARTED, THE CONTRACTOR MUST OBTAIN A PERMIT TO EXCAVATE IN COUNTY STREETS FROM THE L.A. COUNTY ROAD DEPT., DISTRICT OFFICE NO. 1, AND PAY A FEE TO THE COUNTY ENGINEER, ROOM 314 FAN AMERICAN BUILDING, 251 SO. BROADWAY SUFFICIENT TO COVER THE COST OF CONSTRUCTION INSPECTION AND RECORD PLANS.  
 APPROVAL OF THIS PLAN BY THE COUNTY OF LOS ANGELES DOES NOT CONSTITUTE A REPRESENTATION AS TO THE ACCURACY OF THE LOCATION OR OF THE EXISTENCE OR NON-EXISTENCE OF ANY UNDERGROUND UTILITY PIPE, OR 12" OR 18" TUBE WITHIN THE LIMITS OF THIS PROJECT. THIS NOTE APPLIES TO ALL PAGES.  
 IF WORK IS TO BE DONE IN A STATE HIGHWAY, A PERMIT MUST BE OBTAINED FROM THE STATE OF CALIFORNIA, DIVISION OF HIGHWAYS, 128 SOUTH SPRING STREET.

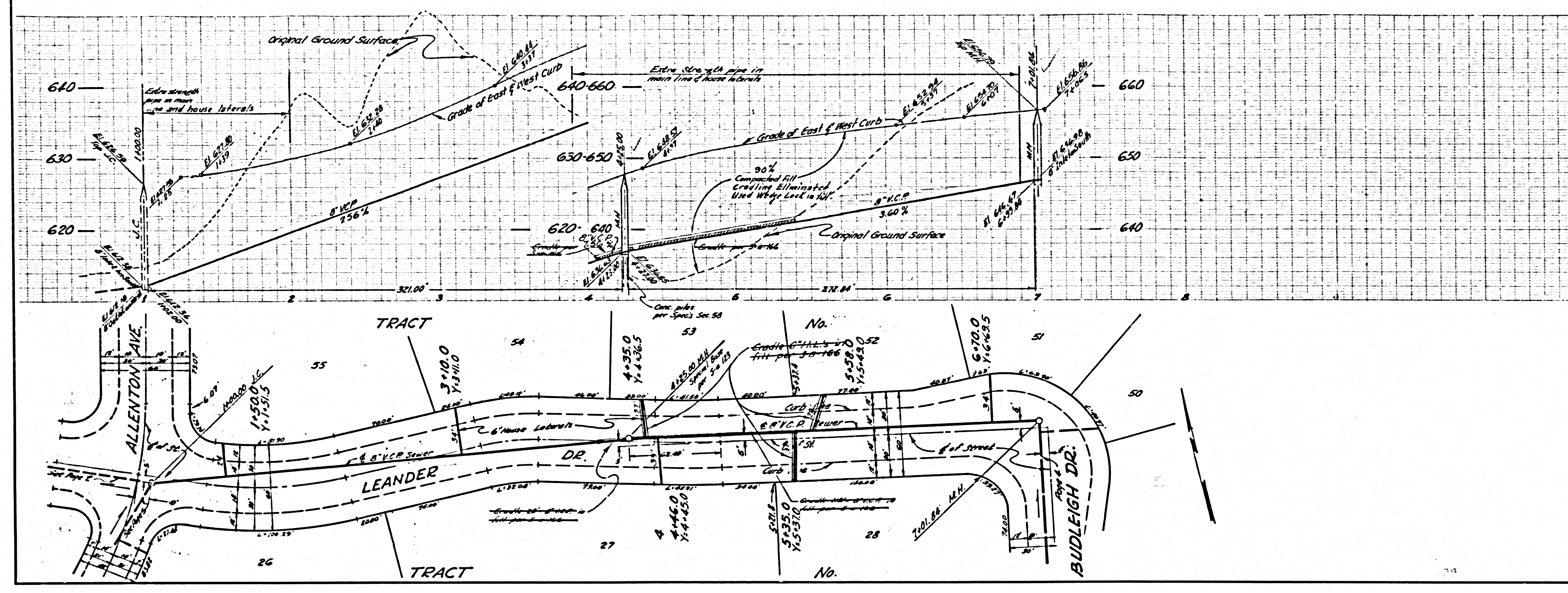
COUNTY OF LOS ANGELES, CALIFORNIA  
 APPROVED, JOHN A. LAMBIE, COUNTY ENGINEER  
 APPROVED, C.E. Davidson, CHIEF ENGINEER  
 DO. LAM. DIST. NO. 21  
 BY C.E. Davidson, SANITATION ENGINEER  
 BY J.F. Davidson, OFFICE ENGINEER  
 CHECKED BY S.K. Onda 4-18-60  
 OFFICE OF COUNTY ENGINEER, REG. C. E. NO. 7406

Submitted W. C. Peindl  
 San Dimas Regional Engineer



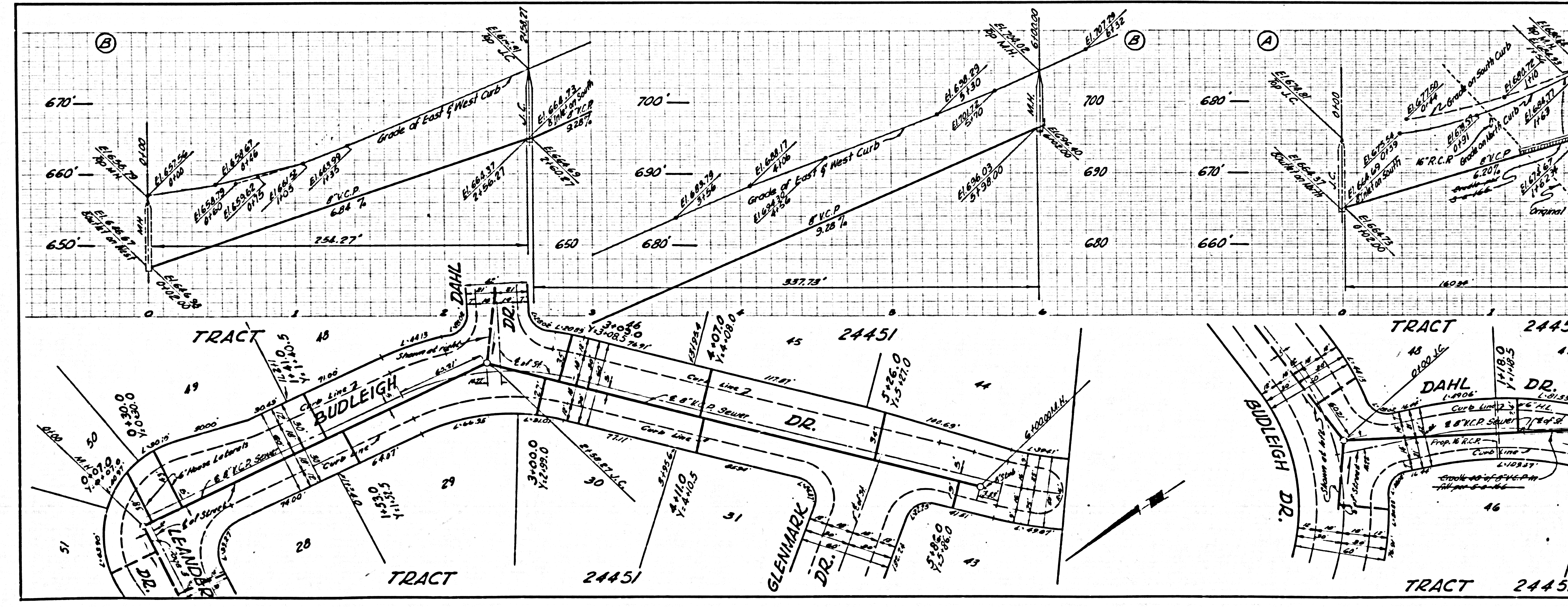


NO CHARGE FOR CONNECTIONS  
DOUBLE SCALE



29,527

NO CHARGE FOR CONNECTIONS  
DOUBLE SCALE

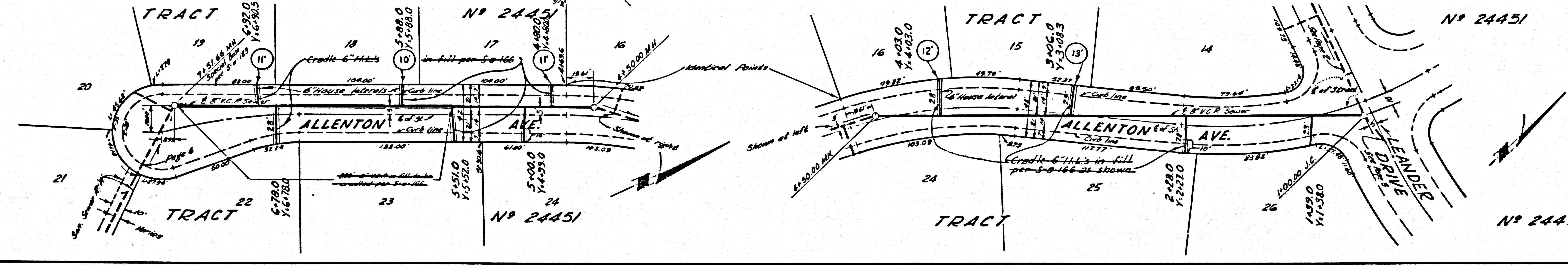
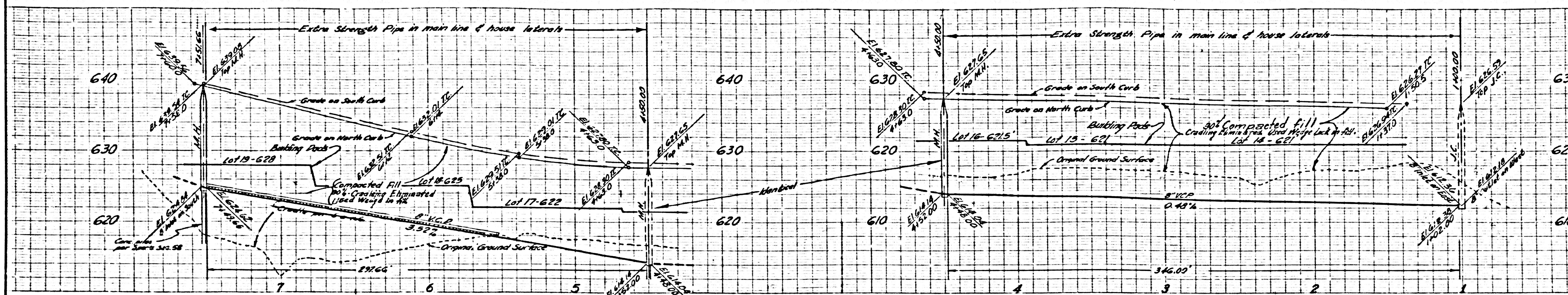


29,528



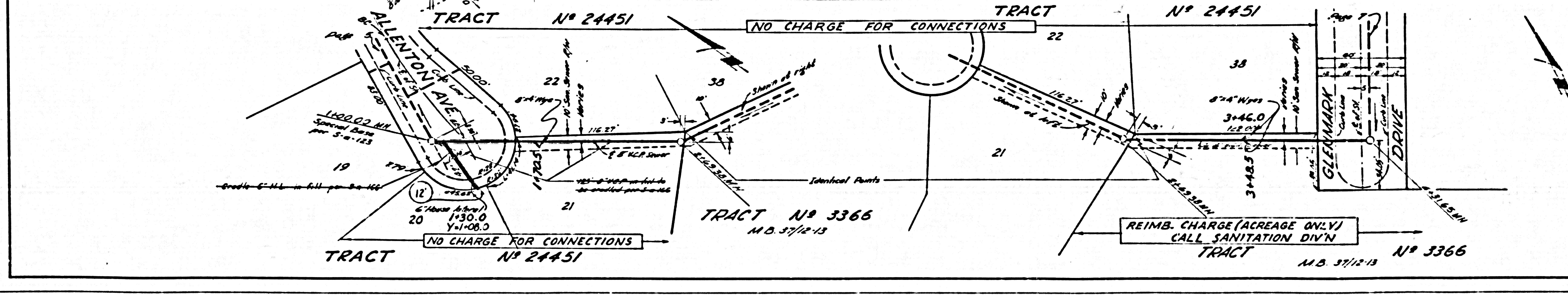
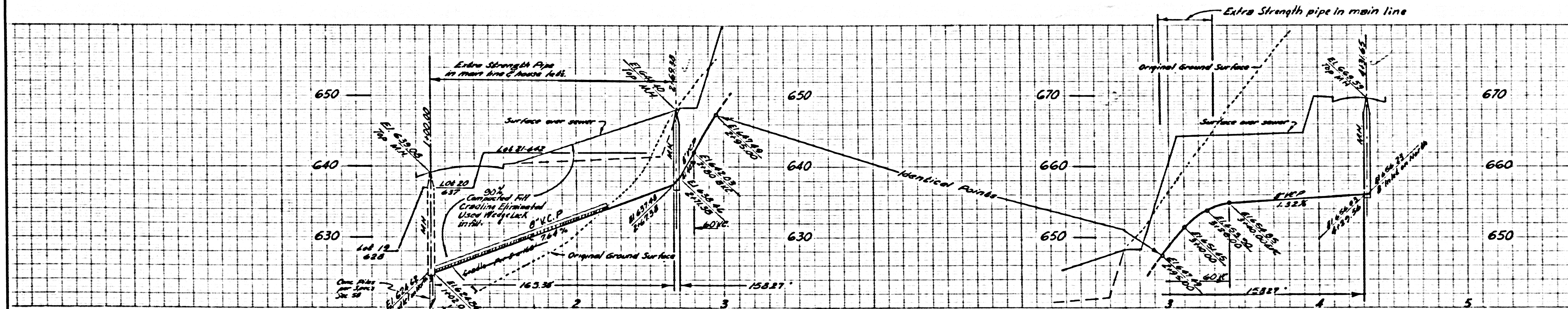
NO CHARGE FOR CONNECTIONS  
DOUBLE SCALE

29,529



COLLECT CHARGES AS INDICATED  
DOUBLE SCALE

29,530

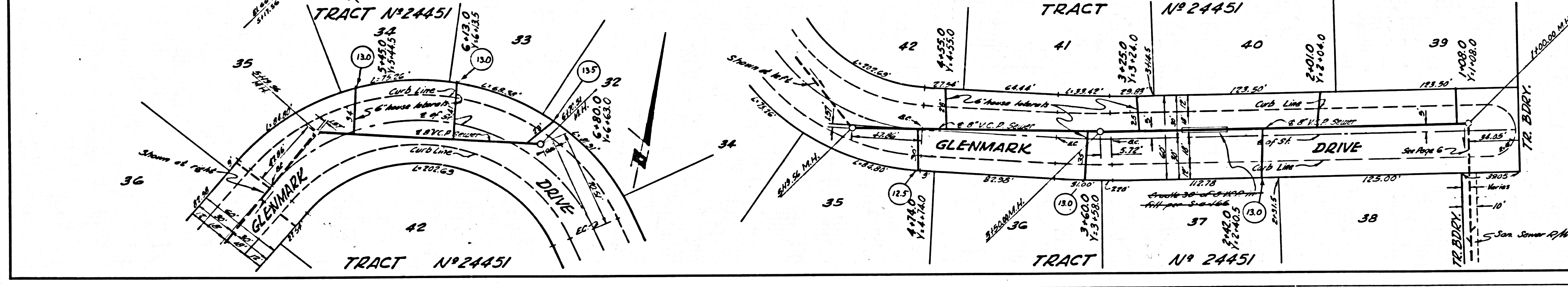
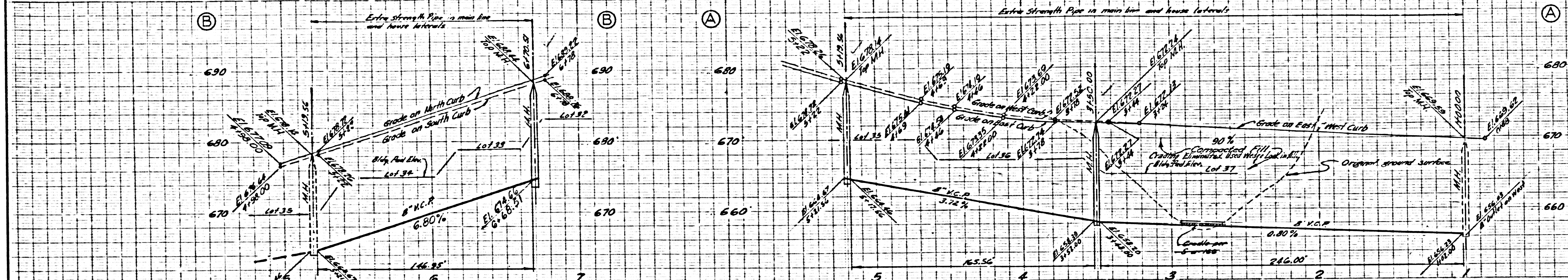




NO CHARGE FOR CONNECTIONS

DOUBLE SCALE

29,531



TRACT N° 3366  
M.D. 37/12/13

U.S.G. 100 NO. 100 BLUE PRINT SHEET NO. 2