

NORWALK BLDG. DIST. NO. 4.06

PROFILE ALIGNMENT AND GRADE OF **P.C. 5330**  
**SANITARY SEWERS PAGE 1**  
 TO BE CONSTRUCTED IN

PRIVATE CONTRACT NO. 5330

W.S. 33  
 1 SHEETS; 2 PAGES

SCALE: VERT. 1" = 4'  
 HORIZ. 1" = 40' NOVEMBER, 1959  
 PREPARED IN THE OFFICES OF

By: *Joseph A. Schmitt, Jr.*  
 REG. C. E. NO. 7828

FOR LEGEND SEE PLAN NO. S-A-64

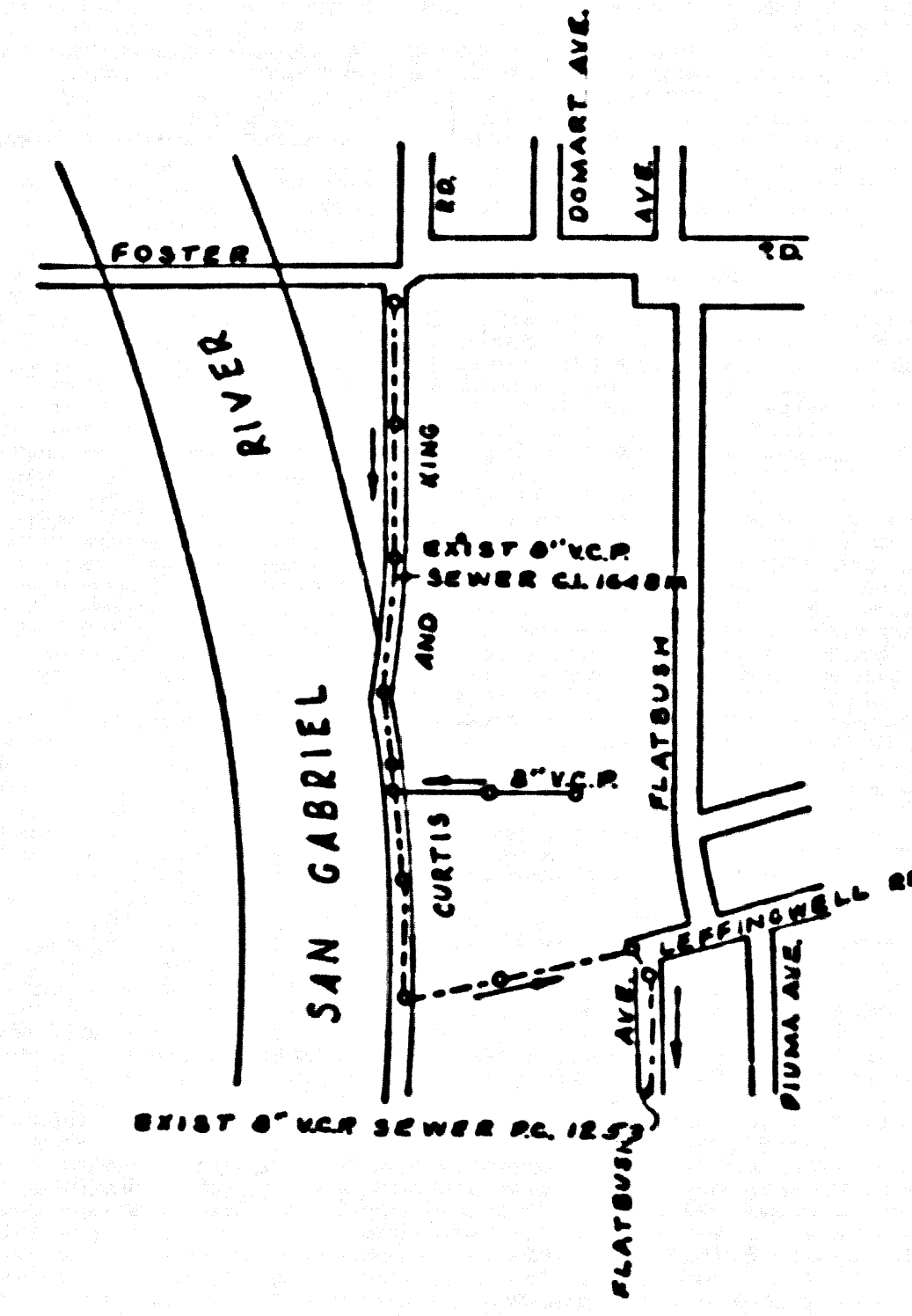
NOTE:  
 GRADES TO WHICH THIS IMPROVEMENT IS TO BE CONSTRUCTED ARE SHOWN ON PLANS AND PROFILES. GRADE POINTS FOR TOP OF CURBS, CENTER LINE OF STREETS, OR CENTER LINE OF ALLEYS ARE SHOWN BY CIRCLES ON PROFILES. AT ALL POINTS BETWEEN DESIGNATED POINTS THE GRADE SHALL BE ESTABLISHED SO AS TO CONFORM TO A STRAIGHT LINE DRAWN BETWEEN SAID DESIGNATED POINTS.  
 ELEVATIONS ARE IN FEET ABOVE U.S.C. & G.S. SEA LEVEL DATUM OF 1929.  
 THIS DRAWING AND THE DATA HEREON ARE HEREBY MADE A PART OF THE SPECIFICATIONS.  
 WORK SHALL BE CONSTRUCTED ACCORDING TO SPECIFICATIONS ON FILE IN THE OFFICE OF THE CITY ENGINEER AND SHALL BE PROSECUTED ONLY IN THE PRESENCE OF THE ENGINEER.  
 BEFORE WORK CAN BE STARTED, THE CONTRACTOR MUST OBTAIN A PERMIT TO EXCAVATE IN CITY STREETS FROM THE CITY OF NORWALK AND MAKE A DEPOSIT WITH THE CITY ENGINEER.  
 1212 E. WALNUT SUFFICIENT TO COVER THE COST OF CONSTRUCTION INSPECTION AND RECORD PLANS.  
 APPROVAL OF THIS PLAN BY THE CITY OF NORWALK DOES NOT CONSTITUTE A REPRESENTATION AS TO THE ACCURACY OF THE LOCATION OF OR THE EXISTENCE OR NON-EXISTENCE OF ANY UNDERGROUND UTILITY PIPE, OR STRUCTURE WITHIN THE LIMITS OF THIS PROJECT. THIS NOTE APPLIES TO ALL PAGES.  
 IF WORK IS TO BE DONE IN A STATE HIGHWAY, A PERMIT MUST BE OBTAINED FROM THE STATE OF CALIFORNIA, DIVISION OF HIGHWAYS, 120 SOUTH SPRING STREET.

CITY OF NORWALK, CALIFORNIA

APPROVED, JOHN A. LAMBIE, CITY ENGINEER APPROVED, C.R. COMPTON, CHIEF ENGINEER  
 CO. SAN. DIST. NO. 1B

BY: \_\_\_\_\_ SANITATION ENGINEER BY: \_\_\_\_\_ OFFICE ENGINEER

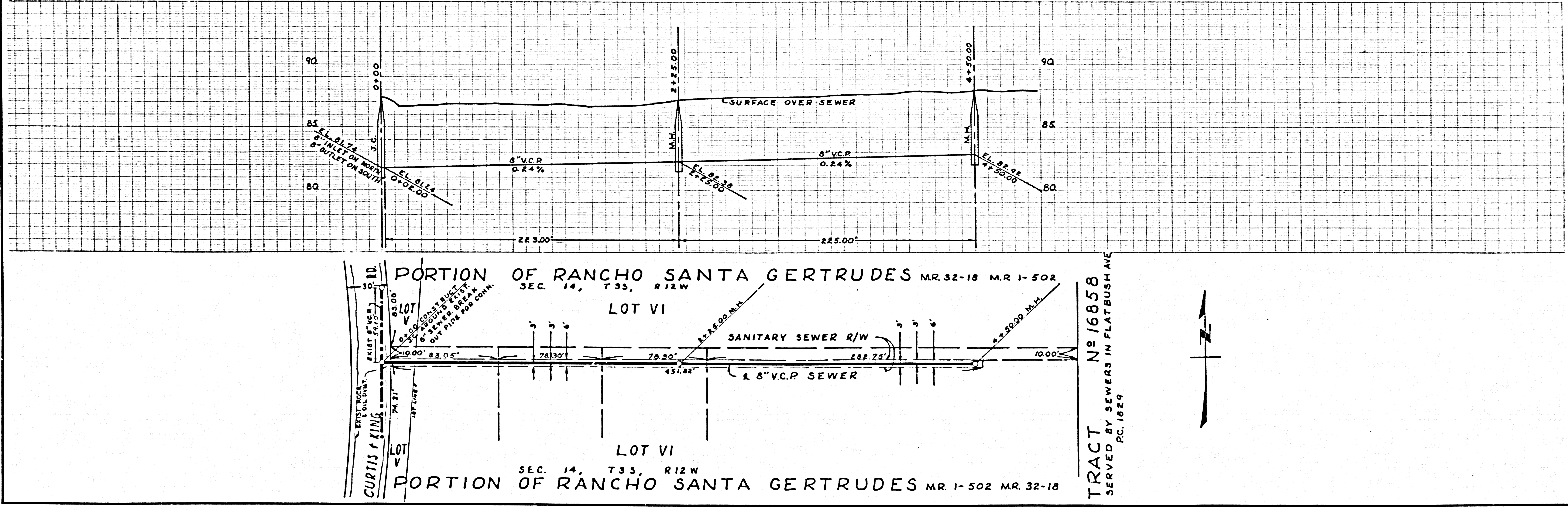
CHECKED BY: \_\_\_\_\_  
 OFFICE OF CITY ENGINEER, REG. C. E. NO. \_\_\_\_\_



- PROVIDE STAKES ON THE PROPERTY LINE OR PROPERTY LINES PRODUCED AT RIGHT ANGLES TO THE SEWER LINE AT THE CENTER LINE OF EACH MANHOLE.
- NO REPRESENTATIVE OF THE CITY ENGINEER WILL SURVEY OR LAY OUT ANY PORTION OF THE WORK.
- THE OWNER OR HIS AUTHORIZED REPRESENTATIVE SHALL FURNISH THE CITY ENGINEER WITH GRADE SHEETS AND STATIONING FOR ALL HOUSE LATERALS AND Y BRANCHES AND SHALL PROVIDE STAKES FOR THEM AT THEIR PROPER LOCATIONS WITH STATIONING PLAINLY MARKED. ANY CHANGE IN LOCATION SHALL BE REQUESTED IN WRITING BY THE OWNER OR HIS REPRESENTATIVE.
- THE PRIVATE ENGINEER SHALL FURNISH THE HOUSE LATERAL & Y BRANCH AT THE PROPERTY LINE & BELOW THE TOP OF CURB SEPARATION FOR EACH HOUSE LATERAL ON THE GRAB-SHEET.
- NO REVISIONS SHALL BE MADE IN THESE PLANS WITHOUT THE APPROVAL OF THE CITY ENGINEER.
- USE STANDARD MANHOLE FRAMES AND COVERS, S-117, EXCEPT AS NOTED.
- USE STANDARD STRENGTH PIPE EXCEPT AS NOTED.
- USE CEMENT MORTAR OR "WEDGE-LOC" OR "SPEED-SEAL" FOR ALL V.C.P. JOINTS PER SPECS, SECS. 36 & 48.
- RESURFACE ALL TRENCH WITHIN PAVED AREA TO MEET CITY OF NORWALK OR CALIF. STATE HIGHWAY REQUIREMENTS IN ACCORDANCE WITH PERMITS.
- ENCASE FOUR FEET OF SEWER AT POINTS OF INTERFERENCE WITH POLES, CASE III, S-173.
- HOUSE LATERALS TO BE CONSTRUCTED WITH INVERTS AT PROPERTY LINE & 2 FEET BELOW CURB GRADE EXCEPT AS NOTED.
- ALL STRUCTURES SHALL BE BRICK SEWER STRUCTURES, S-104, EXCEPT AS NOTED.
- FOR ALL WALL LEAKAGE TEST USE FORMULA NO. 1, SPECS, SEC. 54.
- MANHOLE TOPS IN UNIMPROVED RIGHTS-OF-WAY TO BE SIX INCHES ABOVE FINISHED GRADE.
- THE CONTRACTOR SHALL NOTIFY THE CONSTRUCTION & STORM DRAIN DIVISION BY TELEPHONE, MADISON 5-4147, EXT. 362, AT LEAST TWENTY-FOUR HOURS BEFORE STARTING ANY WORK UNDER THIS CONTRACT.

BOMET-12 CURTIS AND KING RD. (EAST SIDE)  
 AT SOUTH END OF RD. (1500' S SOUTH OF FOSTER RD.)  
 BT. 3PK. IN CONC. BLK AT SOUTHWEST CORNER OF  
 LOT TO HOUSE # 13820 ELEV. 87789 - 1955

INDEX MAP  
 SCALE 1" = 600'  
 P.C. 5330



TRACT No 16858  
 SERVED BY SEWERS IN FLATBUSH AVE  
 P.C. 1829

U.S.G.P. 1946, CAL. BLUE PRINT SYSTEM NO. 1