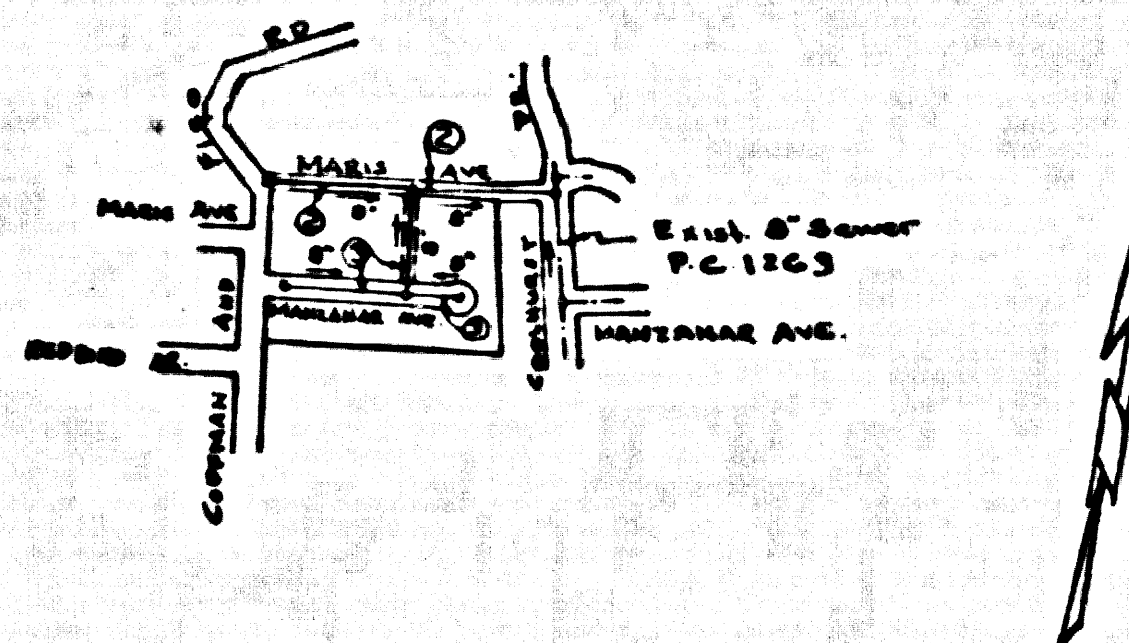


B.M. 57 1670 Elev. 161.357 (1955)  
 L.E. Nail to N. curb Washington Blvd. 2.01'  
 W. of B.C.R. at N.W. cor Washington Blvd.  
 and Brommont Blvd. (Rivers Quad.)



INDEX MAP  
 TRACT NO. 25099  
 Scale 1"=600'  
 P.C. 5336

PICO RIVERA BLDG. DIST. NO. 11.01

PROFILE ALIGNMENT AND GRADE OF P.C. 5336  
 SANITARY SEWERS PAGE 1  
 TO BE CONSTRUCTED IN

TRACT No 25099

PRIVATE CONTRACT NO. 5336

W.S. 36  
 2 SHEETS: 3 PAGES  
 SCALE: 1"=40' HORIZ. 1"=4' VERT. OCTOBER, 1959  
 PREPARED IN THE OFFICES OF

OLSON SURVEYING SERVICE

By: *Robert A. Phillips*  
 REG. C. E. NO. 28840

FOR LEGEND SEE PLAN NO. S-A-41

NOTES

1. PROVIDE STAKES ON THE PROPERTY LINE OR PROPERTY LINES PRODUCED AT RIGHT ANGLES TO THE SEWER LINE AT THE CENTER LINE OF EACH MANHOLE.
2. NO REPRESENTATIVE OF THE COUNTY ENGINEER WILL SURVEY OR LAY OFF ANY PORTION OF THE WORK.
3. THE OWNER OR HIS AUTHORIZED REPRESENTATIVE SHALL FURNISH THE CITY ENGINEER WITH GRADE SHEETS AND STATIONING FOR ALL HOUSE LATERALS AND Y BRANCHES AND SHALL PROVIDE STAKES FOR THEM AT THEIR PROPER LOCATIONS WITH STATIONINGS PLAINLY MARKED. ANY CHANGES IN LOCATION SHALL BE REQUESTED IN WRITING BY THE OWNER OR HIS REPRESENTATIVE.
4. THE PRIVATE ENGINEER SHALL FURNISH THE HOUSE LATERAL DEPTH AT THE PROPERTY LINE BELOW THE TOP OF CURB ELEVATION FOR EACH HOUSE LATERAL ON THE GRADE SHEET.
5. NO REVISIONS SHALL BE MADE IN THESE PLANS WITHOUT THE APPROVAL OF THE CITY ENGINEER.
6. USE STANDARD MANHOLE FRAMES AND COVERS, S-117.
7. USE STANDARD STRENGTH PIPE EXCEPT AS NOTED.
8. USE CEMENT MORTAR OR "WEDGE-LOCK" OR "WEDGE-SEAL" FOR ALL T.C.P. JOINTS PER SPEC'S, SECS. 11 & 12.
9. REINFORCE ALL TRENCH WITHIN PAVED AREA TO MEET L.A. COUNTY ROAD DEPT. OR CALIF. STATE HIGHWAY REQUIREMENTS IN ACCORDANCE WITH PERMITS.
10. ENCASE FOUR FEET OF SEWER AT POINTS OF INTERFERENCE WITH POLES, CASE 11, S-172.
11. HOUSE LATERALS TO BE CONSTRUCTED WITH INVERTS AT PROPERTY LINE 6 FEET BELOW CURB GRADE.
12. ALL STRUCTURES SHALL BE BRICK SEWER STRUCTURES, S-104.
13. FOR ALLOWABLE LEAKAGE TEST USE FORMULA NO. 1, SPEC'S, SEC. 14.
14. MANHOLE TOPS IN UNIMPROVED RIGHTS-OF-WAY TO BE SIX INCHES ABOVE FINISHED GRADE.
15. THE CONTRACTOR SHALL NOTIFY THE CONSTRUCTION & STORM DRAIN DIVISION BY TELEPHONE, MADISON 5-470, EXT. 342, AT LEAST TWENTY-FOUR HOURS BEFORE STARTING ANY WORK UNDER THIS CONTRACT.

NOTES:  
 GRADES TO WHICH THIS IMPROVEMENT IS TO BE CONSTRUCTED ARE SHOWN ON PLANS AND PROFILES. GRADE POINTS FOR TOP OF CURB, CENTER LINE OF STREETS OR CENTER LINE OF ALLEYS ARE SHOWN BY CIRCLES ON PROFILES. AT ALL POINTS BETWEEN DESIGNATED POINTS THE GRADE SHALL BE ESTABLISHED SO AS TO CONFORM TO A STRAIGHT LINE DRAWN BETWEEN SAID DESIGNATED POINTS.  
 ELEVATIONS ARE IN FEET ABOVE U.S.C. & G.S. SEA LEVEL DATUM OF 1929.  
 THIS DRAWING AND THE DATA HEREON ARE HEREBY MADE A PART OF THE SPECIFICATIONS FOR THE WORK TO BE CONSTRUCTED AND SHALL BE PROSECUTED ONLY IN THE PRESENCE OF THE CITY ENGINEER.  
 BEFORE WORK CAN BE STARTED THE CONTRACTOR MUST OBTAIN A PERMIT TO EXCAVATE IN COUNTY STREETS FROM THE L.A. COUNTY ROAD DEPT., DISTRICT OFFICE NO. 4, AND MAKE A DEPOSIT WITH THE CITY OF PICO RIVERA, CALIF., SO. PRASSON'S BLVD., PICO RIVERA, SUFFICIENT TO COVER THE COST OF CONSTRUCTION INSPECTION AND RECORD PLANS.  
 APPROX. OF THIS PLAN BY THE COUNTY OF LOS ANGELES DOES NOT CONSTITUTE A REPRESENTATION AS TO THE ACCURACY OF THE LOCATION OR OF THE EXISTENCE OR NON-EXISTENCE OF ANY UNDERGROUND UTILITY PIPE, OR STRUCTURE WITHIN THE LIMITS OF THIS PROJECT. THIS NOTE APPLIES TO ALL PAGES.  
 IF WORK IS TO BE DONE IN A STATE HIGHWAY, A PERMIT MUST BE OBTAINED FROM THE STATE OF CALIFORNIA, DIVISION OF HIGHWAYS, 128 SOUTH SPRING STREET.

CITY OF PICO RIVERA, CALIFORNIA

APPROVED, JOHN A. LAMBIE, CITY ENGINEER

APPROVED, E.E. COMPTON, CHIEF ENGINEER

By: *E.E. Compton*  
 ASST. SANITATION ENGINEER

By: *J.L. Peterson*  
 OFFICE ENGINEER

CHECKED BY: *B.F. Worley*  
 1-13-60

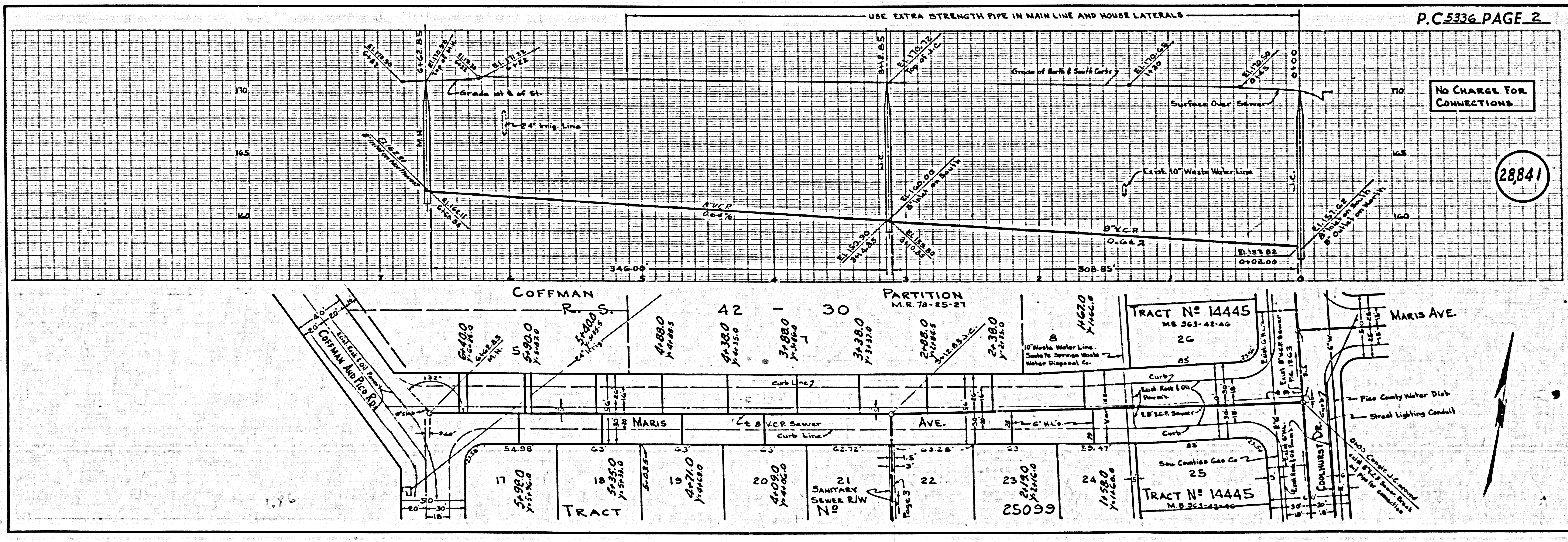
OFFICE OF COUNTY ENGINEER, REG. C.E. NO. 11636

Submitted By: *John L. Peterson*  
 Los Angeles Regional Engineer, Reg. C.E. No. 3811

No CHARGE FOR CONNECTIONS  
*Richard L. Peterson*

REVISION  
 Extended Main Line from Sta. 5+76.45  
 to Sta. 6+62.85 in Maris Ave on Reg 2  
*John L. Peterson* 2-5-60  
 Office of City Engineer

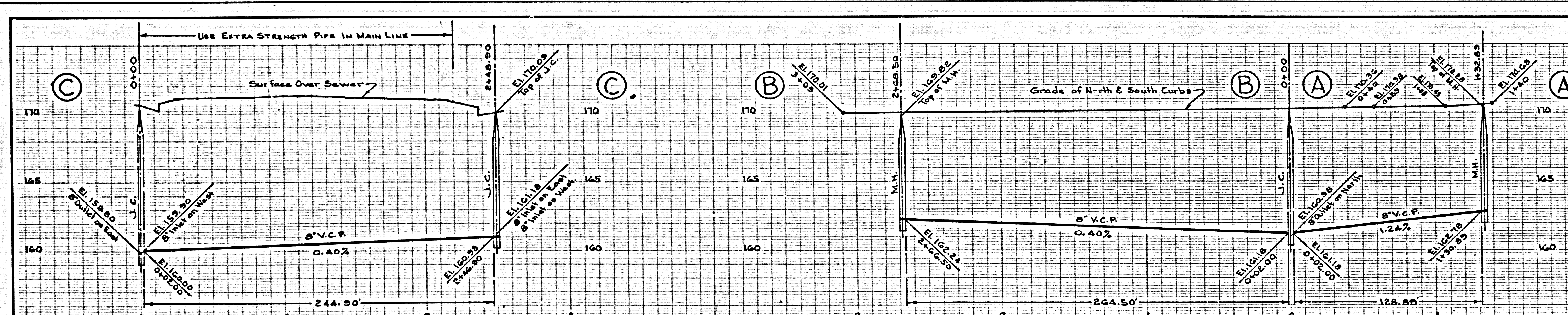
REVISION  
 Added North side of Maris Ave.  
 and extended N.L.'s. to new property line  
*John L. Peterson* 3-7-60  
 Office of City Engineer



No CHARGE FOR CONNECTIONS

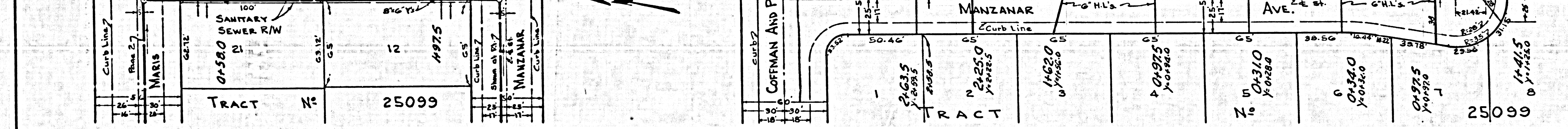
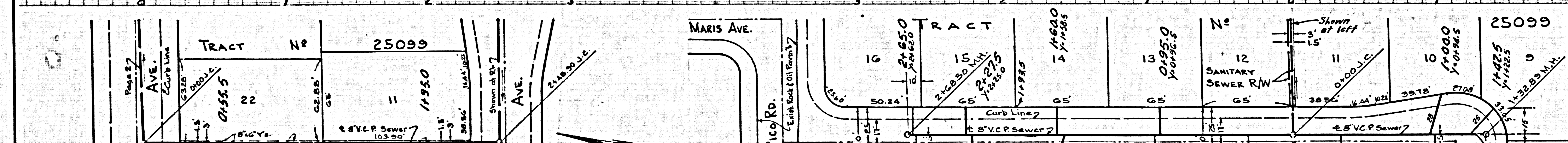
28841

P.C. 5336 PAGE 2



No CHARGE FOR CONNECTIONS

28842



BC 2330 TRACT No 25099