

AM. S.G. 399 ELEV 355.476
 L&T in West curb ± 42' North
 of E. Prod. of Francisquito Ave.
 to the east 80° of E. of Glendale
 Ave. PUENTE QUAD. 1955

NO CHARGE
 FOR CONNECTIONS
 7/27/57 12-24-57

LA PUENTE BLDG. DIST. NO. 2.02

- NOTES
1. PROVIDE STAKES ON THE PROPERTY LINE OR PROPERTY LINES PRODUCED AT RIGHT ANGLES TO THE SEWER LINE AT THE CENTER LINE OF EACH MANHOLE.
 2. NO REPRESENTATIVE OF THE CITY ENGINEER WILL SURVEY OR LAY OUT ANY PORTION OF THE WORK.
 3. THE OWNER OR HIS AUTHORIZED REPRESENTATIVE SHALL FURNISH THE CITY ENGINEER WITH GRADE SHEETS AND STATIONING FOR ALL HOUSE LATERALS AND Y BRANCHES AND SHALL PROVIDE STAKES FOR THEM AT THEIR PROPER LOCATIONS WITH STATIONING PLAINLY MARKED. ANY CHANGE IN LOCATION SHALL BE REQUESTED IN WRITING BY THE OWNER OR HIS REPRESENTATIVE.
 4. THE PRIVATE ENGINEER SHALL FURNISH THE HOUSE LATERAL DEPTH AT THE PROPERTY LINE BELOW THE TOP OF CURB ELEVATION FOR EACH HOUSE LATERAL ON THE GRADE SHEET.
 5. NO REVISIONS SHALL BE MADE IN THESE PLANS WITHOUT THE APPROVAL OF THE CITY ENGINEER.
 6. USE STANDARD MANHOLE FRAMES AND COVERS, S-6-117, 48" DIA. 48" HIGH.
 7. USE STANDARD STRENGTH PIPE 48" DIA. 48" HIGH.
 8. USE CEMENT MORTAR OR "WEDGE-LOCK" OR "SPEED-SEAL" FOR ALL V.C.P. JOINTS PER SPCCS, SECS. 36 & 40.
 9. RESURFACE ALL TRENCH WITHIN PAVED AREA TO MEET L.A. COUNTY ROAD DEPT. OR CALIF. STATE HIGHWAY REQUIREMENTS IN ACCORDANCE WITH PERMITS.
 10. ENCASE FOUR FEET OF SEWER AT POINTS OF INTERFERENCE WITH POLES, CASE III, S-6-172.
 - 11.
 12. ALL STRUCTURES SHALL BE BRICK SEWER STRUCTURES, S-6-104, 48" DIA. 48" HIGH.
 13. FOR ALLOWABLE LEAKAGE TEST USE FORMULA NO. 1, SPCCS, SEC. 34.
 14. MANHOLE TOPS IN UNIMPROVED RIGHTS-OF-WAY TO BE SIX INCHES ABOVE FINISHED GRADE.
 15. THE CONTRACTOR SHALL NOTIFY THE CONSTRUCTION & STREETS CLEAN DIVISION BY TELEPHONE, MADISON 9-4747, EXT. 303, AT LEAST TWENTY-FOUR HOURS BEFORE STARTING ANY WORK UNDER THIS CONTRACT.

PROFILE ALIGNMENT AND GRADE OF P.C. 5337
 SANITARY SEWERS PAGE 1
 TO BE CONSTRUCTED IN

SANITARY SEWER RIGHTS OF WAY

PRIVATE CONTRACT NO. 5337

W.S. 47
 2 SHEETS, 4 PAGES

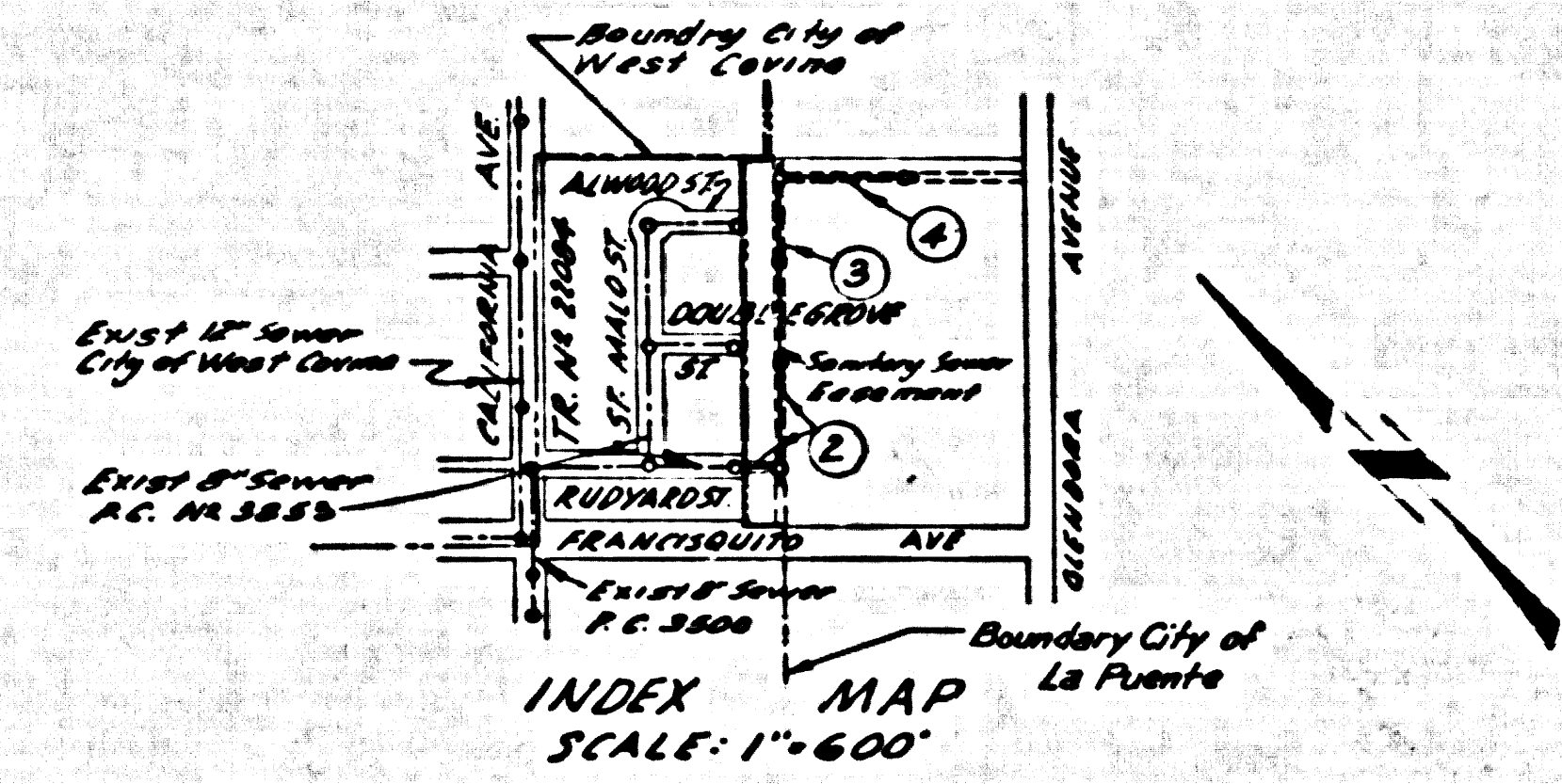
SCALE: VERT. 1" = 4' HORIZ. 1" = 40' SEPTEMBER, 1959

PREPARED IN THE OFFICES OF
 L. FREDERICK PACK

BY: *L. F. Pack*
 REG. C. E. NO. 10219

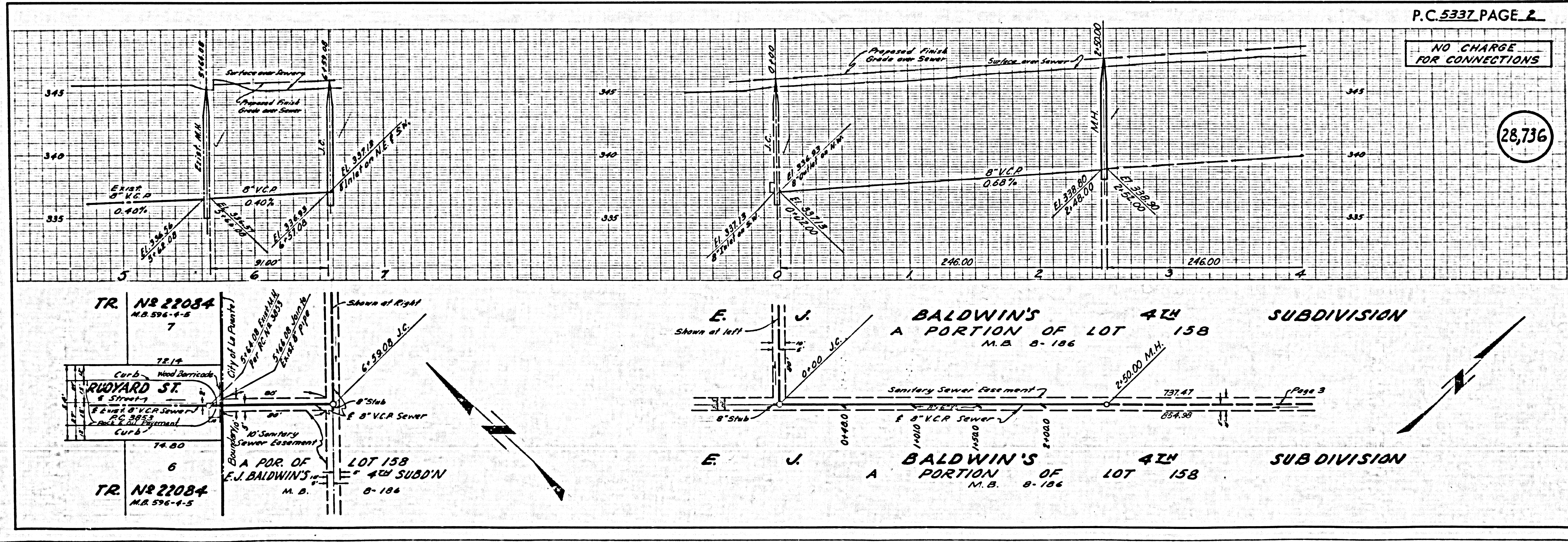
FOR LEGEND SEE PLAN NO. S-A-64

28,735



R.C. 5337
 CITY OF LA PUENTE
 APPROVED: *[Signature]*
 CITY MANAGER

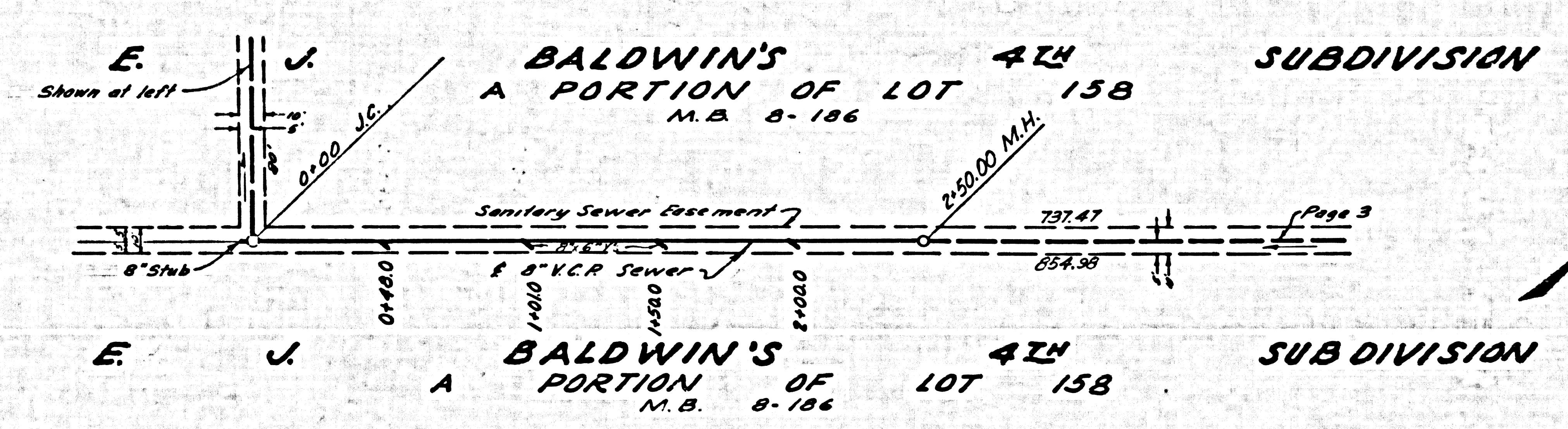
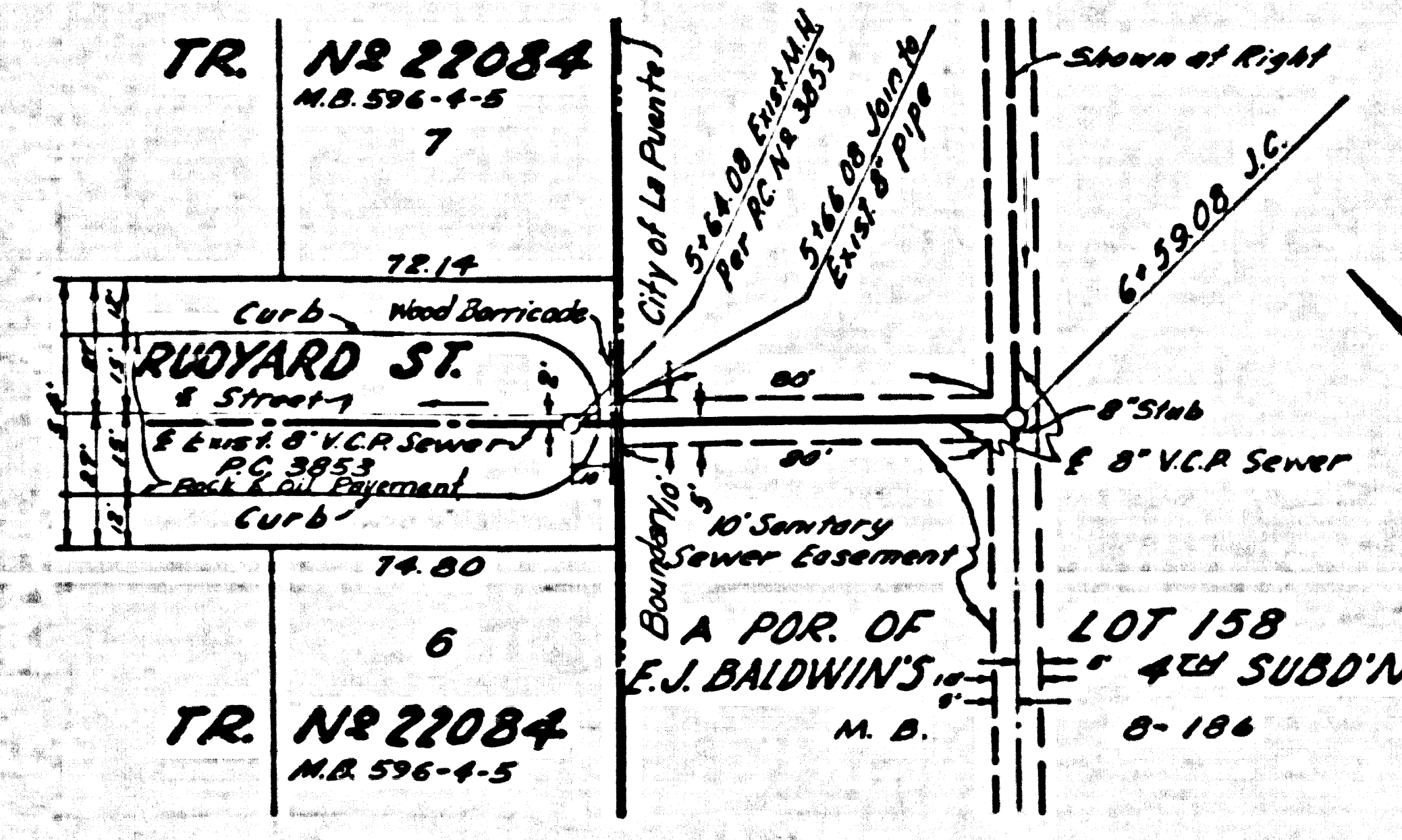
NOTE:
 GRADES TO WHICH THIS IMPROVEMENT IS TO BE CONSTRUCTED ARE SHOWN ON PLANS AND PROFILE GRADE POINTS FOR TOP OF CURBS, CENTER LINE OF STREETS, OR CENTER LINE OF ALLEYS ARE SHOWN BY CIRCLES ON PROFILES. AT ALL POINTS BETWEEN DESIGNATED POINTS THE GRADE SHALL BE ESTABLISHED SO AS TO CONFORM TO A STRAIGHT LINE BETWEEN SAID DESIGNATED POINTS.
 ELEVATIONS ARE IN FEET ABOVE U.S.C. & G.S. SEA LEVEL DATUM OF 1929.
 THIS DRAWING AND THE DATA HEREON ARE HEREBY MADE A PART OF THE SPECIFICATIONS.
 WORK SHALL BE CONSTRUCTED ACCORDING TO SPECIFICATIONS ON FILE IN THE OFFICE OF THE CITY ENGINEER AND SHALL BE PROSECUTED ONLY IN THE PRESENCE OF THE CITY ENGINEER.
 BEFORE WORK CAN BE STARTED, THE CONTRACTOR MUST OBTAIN A PERMIT TO EXCAVATE IN CITY STREETS FROM THE L.A. COUNTY ROAD DEPT., DISTRICT OFFICE NO. 1, AND MAKE A DEPOSIT WITH THE CITY ENGINEER, CITY OF LA PUENTE, SUFFICIENT TO COVER THE COST OF CONSTRUCTION INSPECTION AND RECORD PLANS.
 APPROVAL OF THIS PLAN BY THE CITY OF LA PUENTE DOES NOT CONSTITUTE A REPRESENTATION AS TO THE ACCURACY OF THE LOCATION OR OF THE EXISTENCE OR NON-EXISTENCE OF ANY UNDERGROUND UTILITY PIPE, OR STRUCTURE WITHIN THE LIMITS OF THIS PROJECT. THIS NOTE APPLIES TO ALL PAGES.
 IF WORK IS TO BE DONE IN A STATE HIGHWAY, A PERMIT MUST BE OBTAINED FROM THE STATE OF CALIFORNIA, DIVISION OF HIGHWAYS, 138 SOUTH SPRING STREET.
 COUNTY OF LOS ANGELES, CALIFORNIA
 APPROVED, JOHN A. LAMBE, CITY ENGINEER
 APPROVED, C.E. CAMPBELL, CHIEF ENGINEER
 BY: *[Signature]* BY: *[Signature]*
 SANITATION ENGINEER OFFICE ENGINEER
 CHECKED BY: *[Signature]* 12-24-57
 OFFICE OF CITY ENGINEER, REG. C. E. NO. 3404
 SUBMITTED: *[Signature]* REG. C. E. NO. 3404



P.C. 5337 PAGE 2

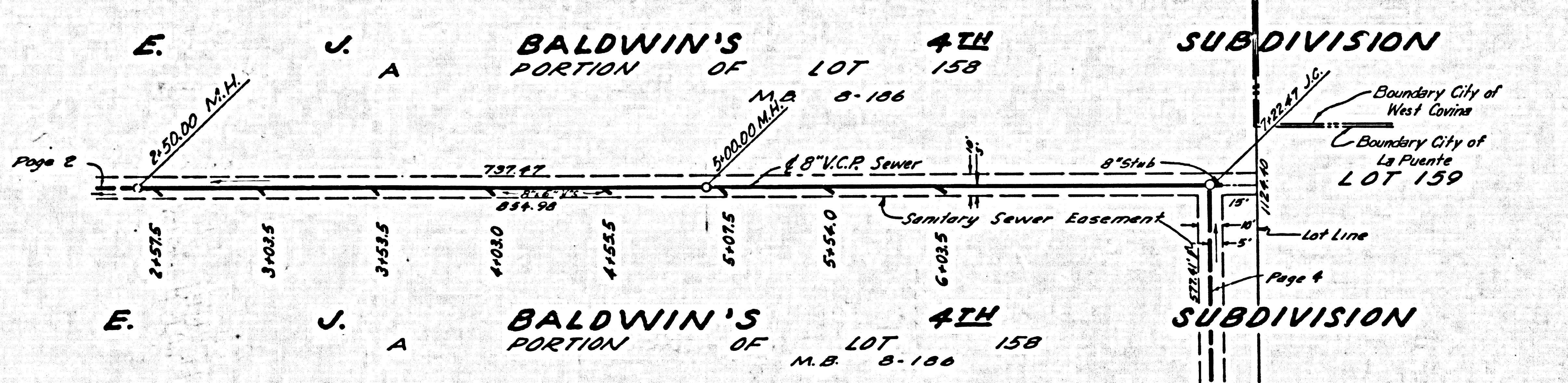
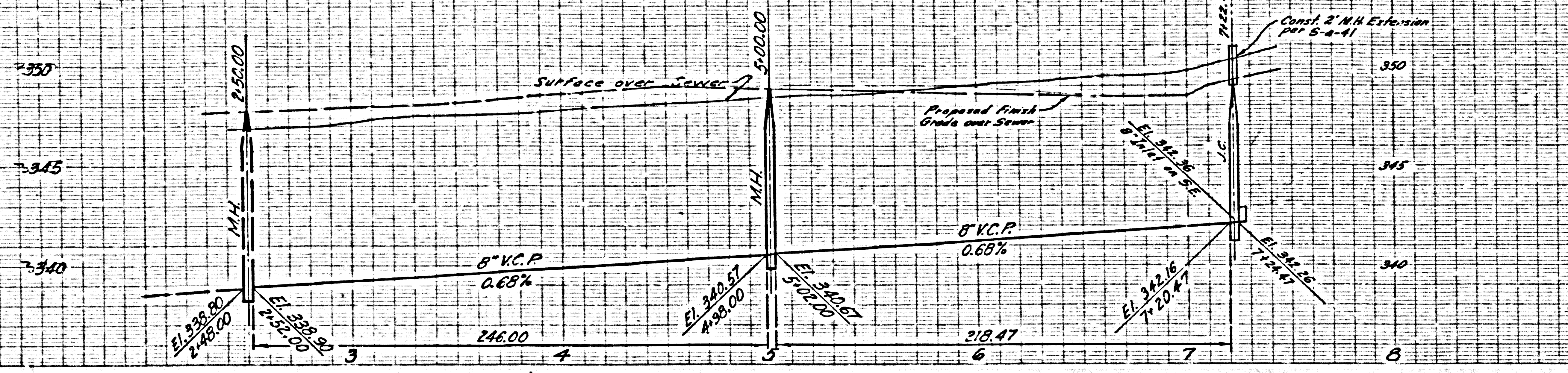
NO CHARGE FOR CONNECTIONS

28,736



NO CHARGE FOR CONNECTIONS

28,737



NO CHARGE FOR CONNECTIONS

28,738

