

PARAMOUNT BLDG. DIST. NO. 404

PROFILE ALIGNMENT AND GRADE OF **P.C. 5338**
SANITARY SEWERS PAGE **1**
 TO BE CONSTRUCTED IN

MARCELLE STREET (28,296)

PRIVATE CONTRACT NO. 5338

W.S. 32
 SHEET : 2 PAGES

SCALE: VERT. 1" = 4'
 HORIZ. 1" = 40'

NOVEMBER, 1959

PREPARED IN THE OFFICES OF

GLEN ROOD

COMPTON, CALIFORNIA

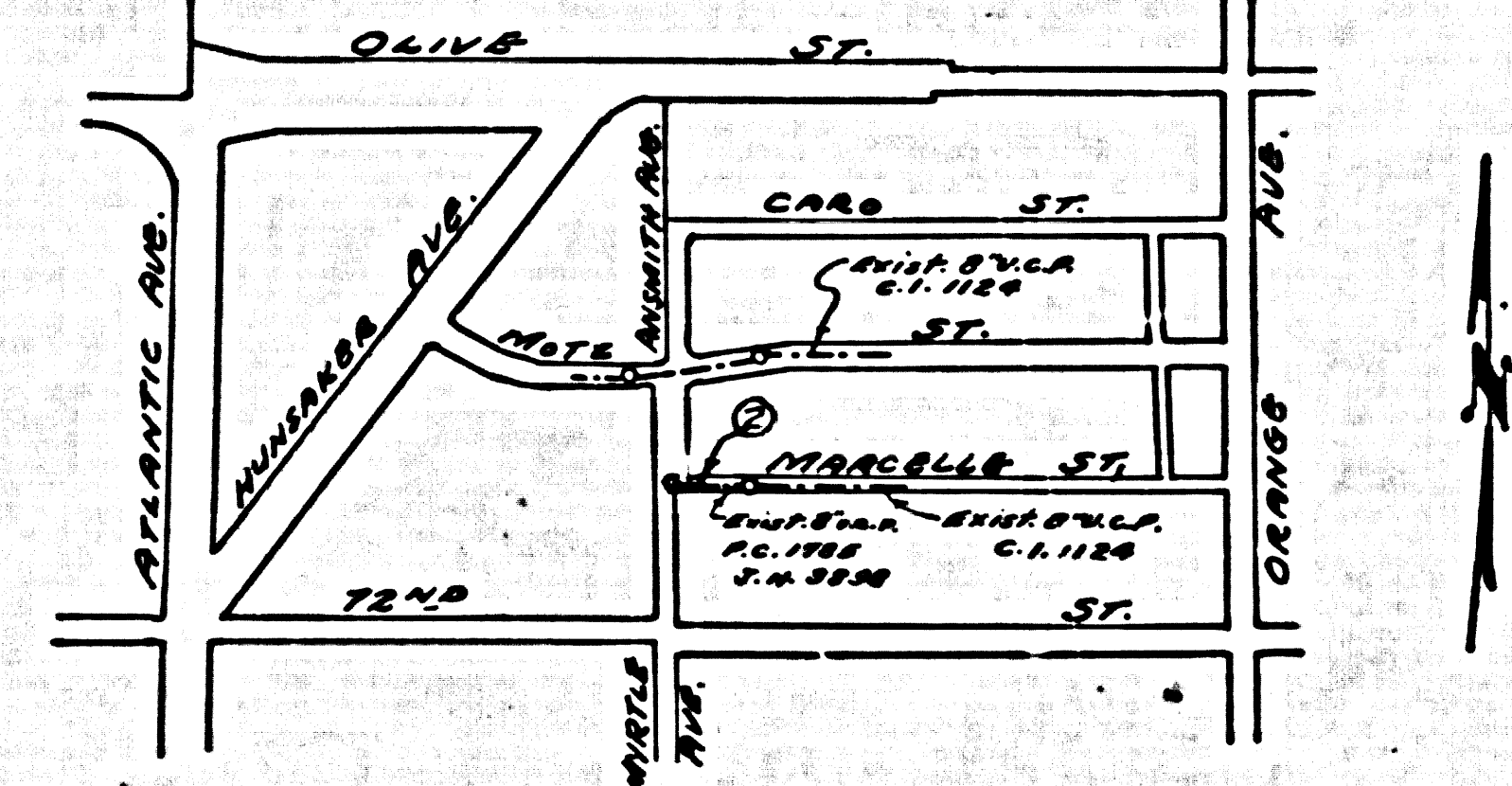
REG. C. E. NO. 2073

FOR LEGEND SEE PLAN NO. S-A-64

BENCH MARK - 34' 9.339, ELEV. 65.07'
 34' CAN. DIAM. 3/4" x 1/2" DIA. 2.5" DIA. IN CONCRETE
 TO Bishop's Field Service Sta. on NE. cor. of 9th & 5th
 (Permit No. 1000)

- NOTES
1. PROVIDE STAKES ON THE PROPERTY LINE OR PROPERTY LINES PRODUCED AT RIGHT ANGLES TO THE SEWER LINE AT THE CENTER LINE OF EACH MANHOLE.
 2. NO REPRESENTATIVE OF THE CITY ENGINEER WILL SURVEY OR LAY OUT ANY PORTION OF THE WORK.
 3. THE OWNER OR HIS AUTHORIZED REPRESENTATIVE SHALL FURNISH THE CITY ENGINEER WITH GRADE SHEETS AND STATIONING FOR ALL HOUSE LATERALS AND Y BRANCHES AND SHALL PROVIDE STAKES FOR THEM AT THEIR PROPER LOCATIONS WITH STATIONING PLAINLY MARKED. ANY CHANGE IN LOCATION SHALL BE REQUESTED IN WRITING BY THE OWNER OR HIS REPRESENTATIVE.
 4. THE PRIVATE ENGINEER SHALL FURNISH THE HOUSE LATERAL DEPTH AT THE PROPERTY LINE BELOW THE TOP OF CURB ELEVATION FOR EACH HOUSE LATERAL ON THE GRADE SHEET.
 5. NO REVISIONS SHALL BE MADE IN THESE PLANS WITHOUT THE APPROVAL OF THE CITY ENGINEER.
 6. USE STANDARD MANHOLE FRAMES AND COVERS, S-111, EXCEPT AS NOTED.
 7. USE STANDARD STRENGTH PIPE, EXCEPT AS NOTED.
 8. USE CEMENT MORTAR OR "WEDGE-LOCK" OR "SEAL-SEAL" FOR ALL V.C.P. JOINTS PER SPEC'S, SECS. 34 & 41.
 9. RESURFACE ALL TRENCH WITHIN PAVED AREA TO MEET L.A. COUNTY ROAD DEPT. OR CALIF. STATE HIGHWAY REQUIREMENTS IN ACCORDANCE WITH PERMITS.
 10. ENCASE FOUR FEET OF SEWER AT POINTS OF INTERFERENCE WITH POLE, CASE III, S-6-172.
 11. HOUSE LATERALS TO BE CONSTRUCTED AS NOTED IN DETAIL.
 12. ALL STRUCTURES SHALL BE BRICK SEWER STRUCTURES, S-104, EXCEPT AS NOTED.
 13. FOR ALLOWABLE LEAKAGE TEST USE FORMULA NO. 1, SPEC'S, SEC. 34.
 14. MANHOLE TOPS IN UNIMPROVED RIGHTS-OF-WAY TO BE SIX INCHES ABOVE FINISHED GRADE.
 15. THE CONTRACTOR SHALL NOTIFY THE CONSTRUCTION & STORM DRAIN DIVISION BY TELEPHONE, MADISON 9-4747, EXT. 342, AT LEAST TWENTY-FOUR HOURS BEFORE STARTING ANY WORK UNDER THIS CONTRACT.

NO CHARGE FOR CONNECTION
 P. C. 5338



INDEX MAP
 SCALE 1" = 600'
 P.C. 5338

NOTE: GRADES TO WHICH THIS IMPROVEMENT IS TO BE CONSTRUCTED ARE SHOWN ON PLANS AND PROFILE. GRADE POINTS FOR TOP OF CURB, CENTER LINE OF STREETS, OR CENTER LINE OF ALLEYS ARE SHOWN BY CHAINS OR PROFILES AT ALL POINTS BETWEEN DESIGNATED POINTS THE GRADE SHALL BE ESTABLISHED SO AS TO CONFORM TO A STRAIGHT LINE DRAWN BETWEEN SAID DESIGNATED POINTS. ELEVATIONS ARE IN FEET ABOVE U.S.C. & G.S. SEA LEVEL DATUM OF 1929. THIS DRAWING AND THE DATA HEREON ARE HEREBY MADE A PART OF THE SPECIFICATIONS. WORK SHALL BE CONSTRUCTED ACCORDING TO SPECIFICATIONS ON FILE IN THE OFFICE OF THE CITY ENGINEER AND SHALL BE PROSECUTED ONLY IN THE PRESENCE OF THE CITY ENGINEER. BEFORE WORK CAN BE STARTED, THE CONTRACTOR MUST OBTAIN A PERMIT TO EXCAVATE IN CITY STREETS FROM THE L.A. COUNTY ROAD DEPT., DISTRICT OFFICE NO. 8, AND MAKE A DEPOSIT WITH THE CITY OF PARAMOUNT, 1640 1/2 PARAMOUNT BOULEVARD, SUFFICIENT TO COVER THE COST OF CONSTRUCTION INSPECTION AND RECORD PLANS. APPROVAL OF THIS PLAN BY THE CITY OF PARAMOUNT DOES NOT CONSTITUTE A REPRESENTATION AS TO THE ACCURACY OF THE LOCATION OR OF THE EXISTENCE OR NON-EXISTENCE OF ANY UNDERGROUND UTILITY PIPE, OR STRUCTURE WITHIN THE LIMITS OF THIS PROJECT. THIS NOTE APPLIES TO ALL PAGES. IF WORK IS TO BE DONE IN A STATE HIGHWAY, A PERMIT MUST BE OBTAINED FROM THE STATE OF CALIFORNIA, DIVISION OF HIGHWAYS, 129 SOUTH SPRING STREET.

CITY OF PARAMOUNT, CALIFORNIA

APPROVED, JOHN A. LAMBIE, CITY ENGINEER

APPROVED, C.R. COMPTON, CHIEF ENGINEER

BY *C.E. Priddy*, ASST. SANITATION ENGINEER

CHECKED BY *B.F. Worling*, 12-18-59

OFFICE OF CITY ENGINEER, REG. C. E. NO. 11636

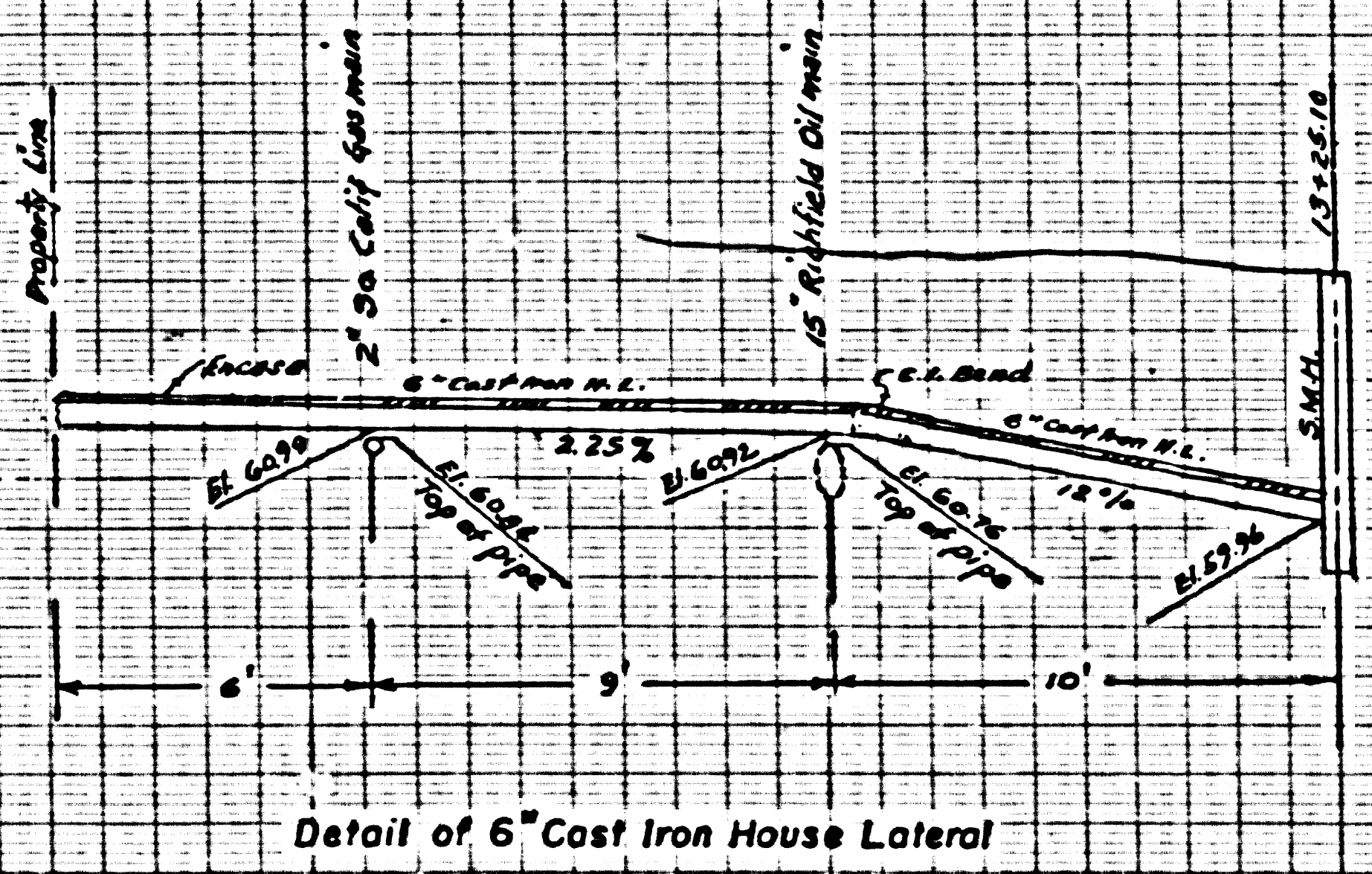
SUBMITTED BY *John L. Esten*, 12-15-59

Los Cerritos Regional Engineer, Reg. C. E. No. 3871

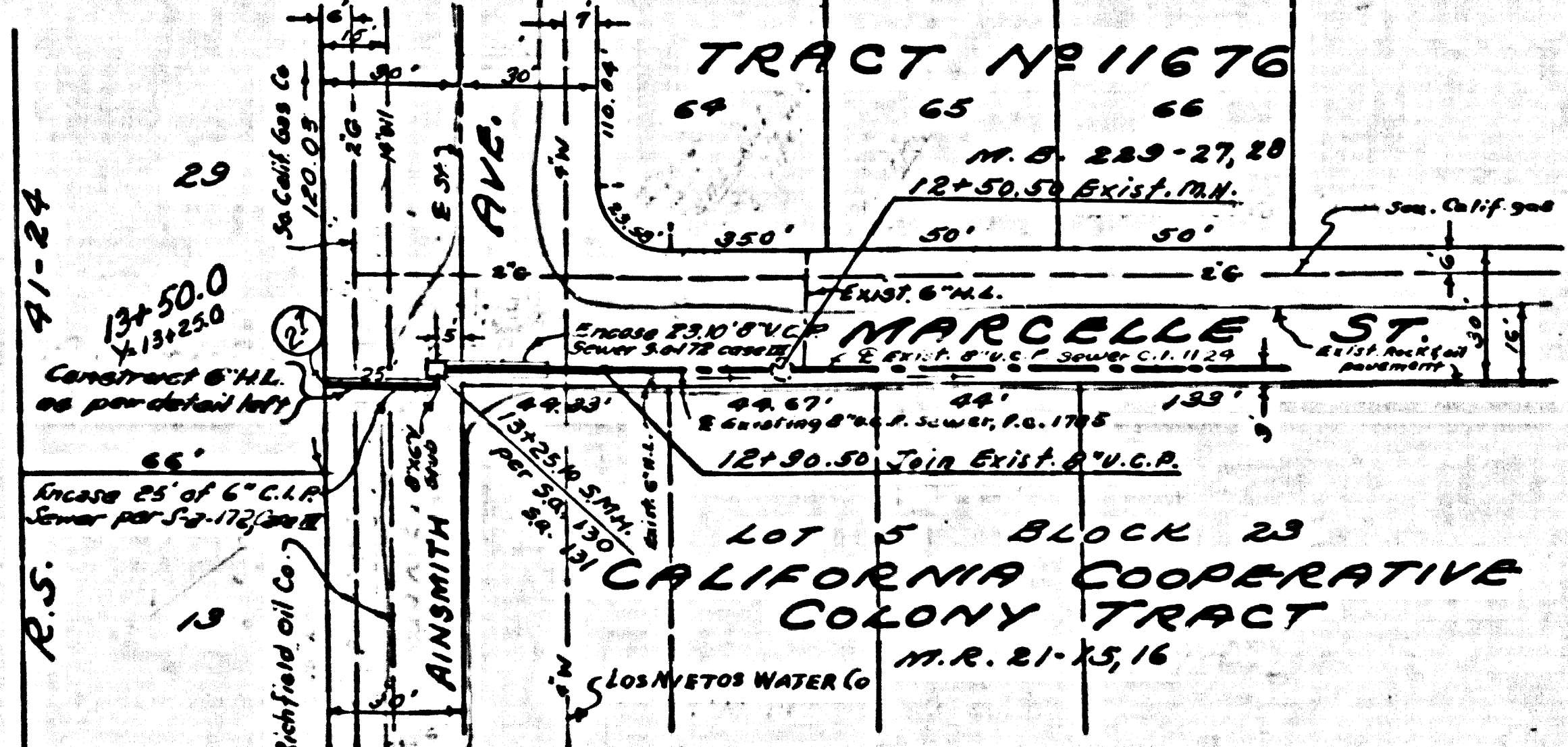
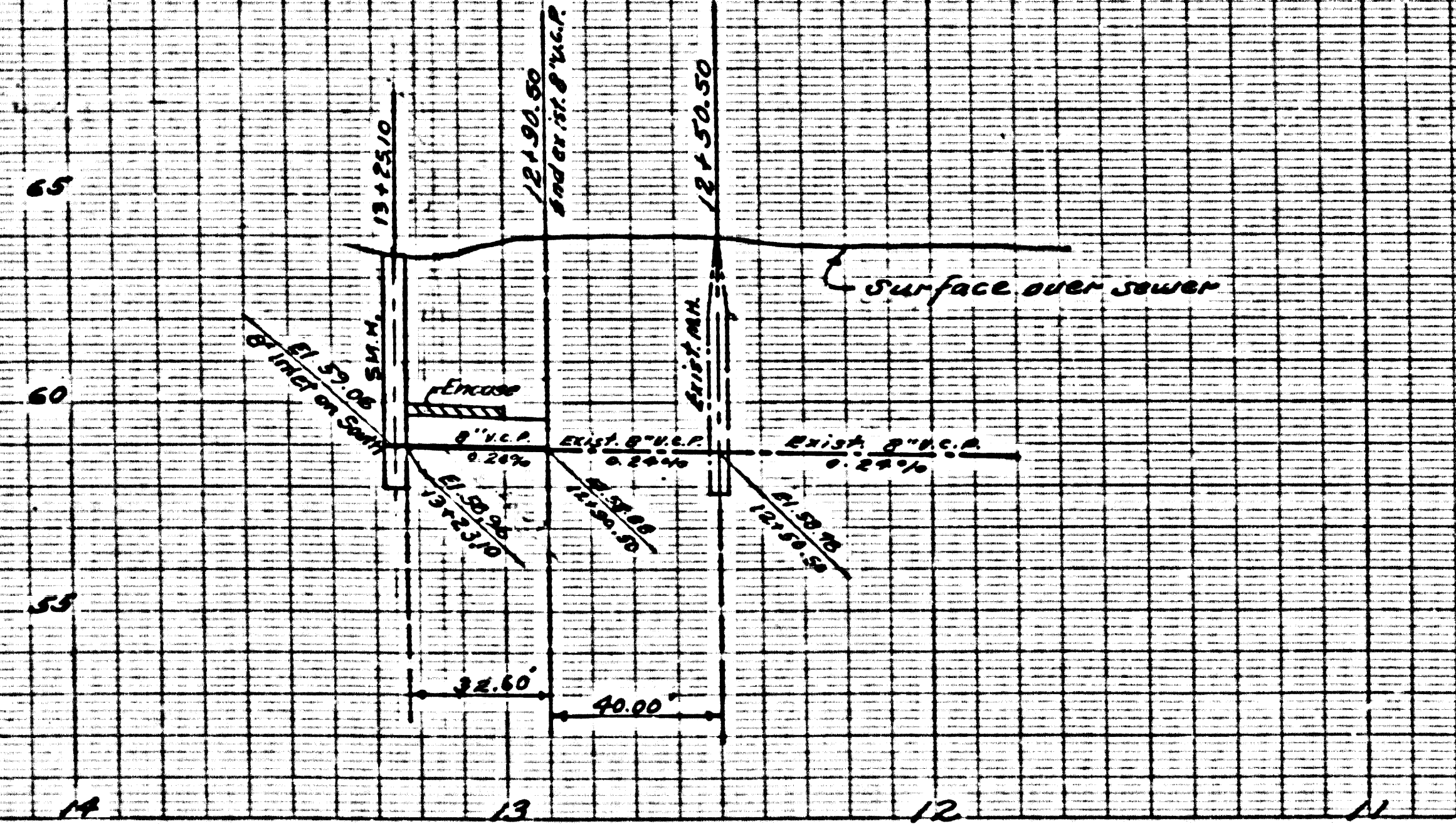
P.C. 5338 PAGE 2

NO CHARGE FOR CONNECTION

(28,297)



Detail of 6" Cast Iron House Lateral



15-2338