

NORWALK BLDG. DIST. NO. 4.06

PROFILE ALIGNMENT AND GRADE OF P.C. 5342
 SANITARY SEWERS PAGE 1
 TO BE CONSTRUCTED IN

BRANSCOMB AVE.
 PRIVATE CONTRACT NO. 5342

W.S. 33
 1 SHEET ; 2 PAGES
 SCALE: VERT. 1"=5' NOV, 1959
 HORIZ. 1"=40'

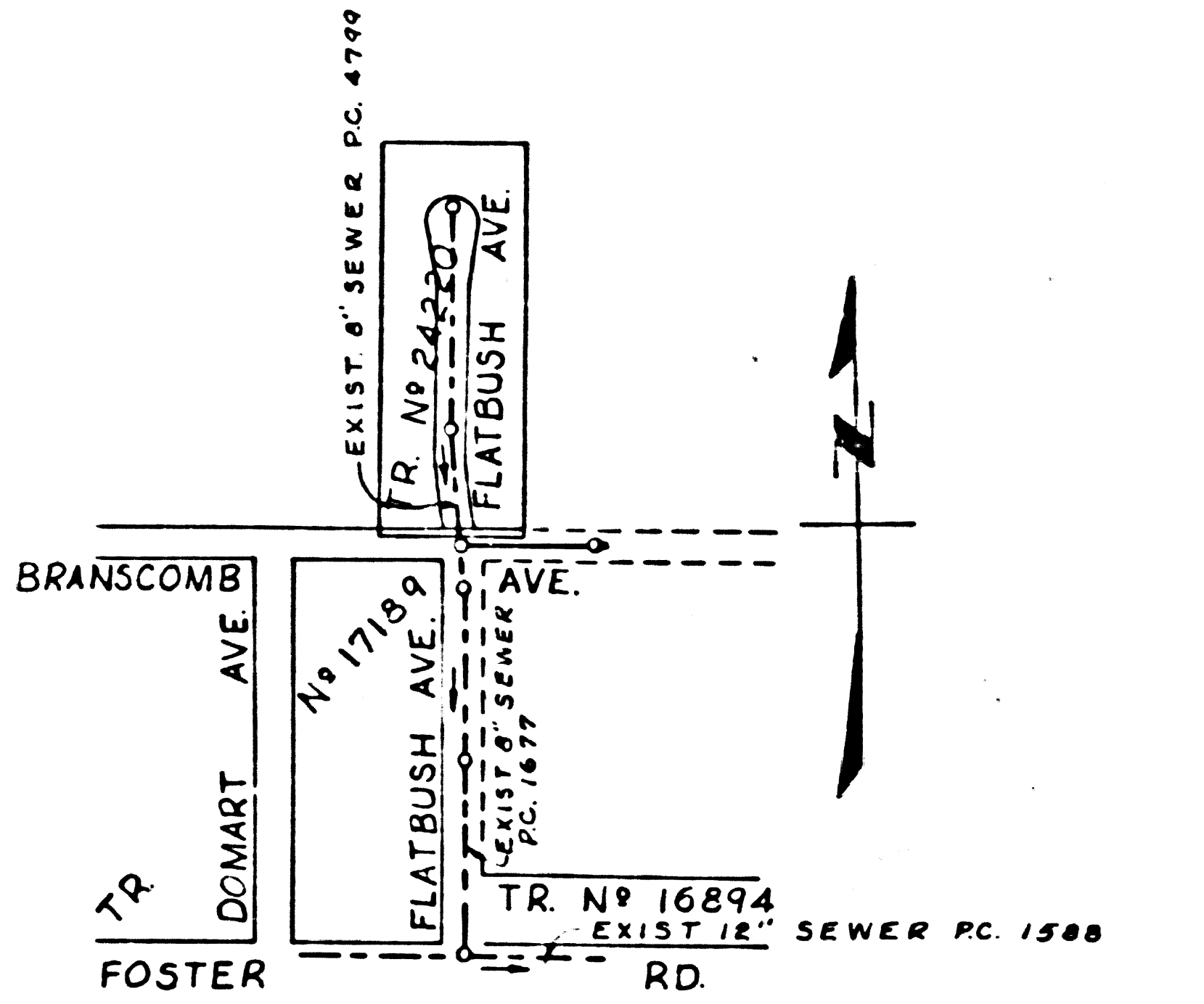
PREPARED IN THE OFFICES OF
 J.S. SCHWEITZER, JR. CONSULT. ENGIN.

BY *J.S. Schweitzer, Jr.*
 REG. C. E. NO. 7222

FOR LEGEND SEE PLAN NO. S-A-64

28,629

- NOTES
1. PROVIDE STAKES ON THE PROPERTY LINE OR PROPERTY LINES PRODUCED AT RIGHT ANGLES TO THE SEWER LINE AT THE CENTER LINE OF EACH MANHOLE.
 2. NO REPRESENTATIVE OF THE CITY ENGINEER WILL SURVEY OR LAY OUT ANY PORTION OF THE WORK.
 3. THE OWNER OR HIS AUTHORIZED REPRESENTATIVE SHALL FURNISH THE CITY ENGINEER WITH GRADE SHEET AND STATIONING FOR ALL HOUSE LATERALS AND T BRANCHES AND SHALL PROVIDE STAKES FOR THEM AT THEIR PROPER LOCAL TIES WITH STATIONING PLAINLY MARKED. ANY CHANGE IN LOCATION SHALL BE REQUESTED IN WRITING BY THE OWNER OR HIS REPRESENTATIVE.
 4. THE PRIVATE ENGINEER SHALL FURNISH THE HOUSE LATERAL DEPTH AT THE PROPERTY LINE BELOW THE TOP OF CURB ELEVATION FOR EACH HOUSE LATERAL ON THE GRADE SHEET.
 5. NO REVISIONS SHALL BE MADE IN THESE PLANS WITHOUT THE APPROVAL OF THE CITY ENGINEER.
 6. USE STANDARD MANHOLE FRAMES AND COVERS, 2-117, EXCEPT AS NOTED.
 7. USE STANDARD STRENGTH PIPE.
 8. USE CEMENT MORTAR OR "WEDGE LOCK" OR "SPREAD SEAL" FOR ALL VCP JOINTS PER SPECS. SECS. 36 & 40.
 9. RESURFACE ALL TRENCH WITHIN PAVED AREA TO MEET CITY OF NORWALK OR CALIF. STATE HIGHWAY REQUIREMENTS IN ACCORDANCE WITH PERMITS.
 10. ENCASE FOUR FEET OF SEWER AT POINTS OF INTERFERENCE WITH POLES, CASE III, S-172.
 11. HOUSE LATERALS TO BE CONSTRUCTED WITH 1/4" RISE PER FOOT TO PROPERTY LINE.
 12. ALL STRUCTURES SHALL BE BRICK SEWER STRUCTURES, S-104, EXCEPT AS NOTED.
 13. P.C. ALLOWABLE LEAKAGE TEST USE FORMULA NO. 1, SPECS. SEC. 54.
 14. MANHOLE TOPS IN UNIMPROVED RIGHTS-OF-WAY TO BE SIX INCHES ABOVE FINISHED GRADE.
 15. THE CONTRACTOR SHALL NOTIFY THE CONSTRUCTION & STORM DRAIN DIVISION BY TELEPHONE, MADISON 94747, EXT. 362, AT LEAST TWENTY FOUR HOURS BEFORE STARTING ANY WORK UNDER THIS CONTRACT.



INDEX MAP
 SCALE 1"=300'
 P.C. 5342

COLLECT CHARGES AS INDICATED

D. Higgins 12-21-59

BMET-12 CURTIS (KING (E. SIDE)
 AT S. END OF RD. (1500' S. OF FOSTER RD.)
 BT. SPK. IN CONC. BLK. AT S.W. COR. OF
 LOT TO HOUSE #13820 ELEV. 87.789-1955

NOTE
 GRADES TO WHICH THIS IMPROVEMENT IS TO BE CONSTRUCTED ARE SHOWN ON PLANS AND PROFILES. GRADE POINTS FOR TOP OF CURBS, CENTER LINE OF STREETS, OR CENTER LINE OF ALLEYS ARE SHOWN BY CIRCLES ON PROFILES. AT ALL POINTS BETWEEN DESIGNATED POINTS THE GRADE SHALL BE ESTABLISHED SO AS TO CONFORM TO A STRAIGHT LINE DRAWN BETWEEN SAID DESIGNATED POINTS.
 ELEVATIONS ARE IN FEET ABOVE U.S.C. & G.S. SEA LEVEL DATUM OF 1929.
 THIS DRAWING AND THE DATA HEREON ARE HEREBY MADE A PART OF THE SPECIFICATIONS.
 WORK SHALL BE CONSTRUCTED ACCORDING TO SPECIFICATIONS ON FILE IN THE OFFICE OF THE CITY ENGINEER AND SHALL BE PROTECTED ONLY IN THE PRESENCE OF THE CITY ENGINEER.
 BEFORE WORK CAN BE STARTED, THE CONTRACTOR MUST OBTAIN A PERMIT TO EXCAVATE IN THE CITY ENGINEER'S OFFICE.
 THE CITY OF NORWALK WILL BE RESPONSIBLE FOR THE COST OF CONSTRUCTION INSPECTION AND RECORD PLANS.
 APPROVAL OF THIS PLAN BY THE CITY OF NORWALK DOES NOT CONSTITUTE A REPRESENTATION AS TO THE ACCURACY OF THE LOCATION OF OR THE PRESENCE OR NON-EXISTENCE OF ANY UNDERGROUND UTILITY PIPE OR STRUCTURE WITHIN THE LIMITS OF THIS PROJECT. THIS NOTE APPLIES TO ALL PAGES.
 IF WORK IS TO BE DONE ON A STATE HIGHWAY, A PERMIT MUST BE OBTAINED FROM THE STATE OF CALIFORNIA, DIVISION OF HIGHWAYS, 120 SOUTH SPRING STREET.

CITY OF NORWALK, CALIFORNIA

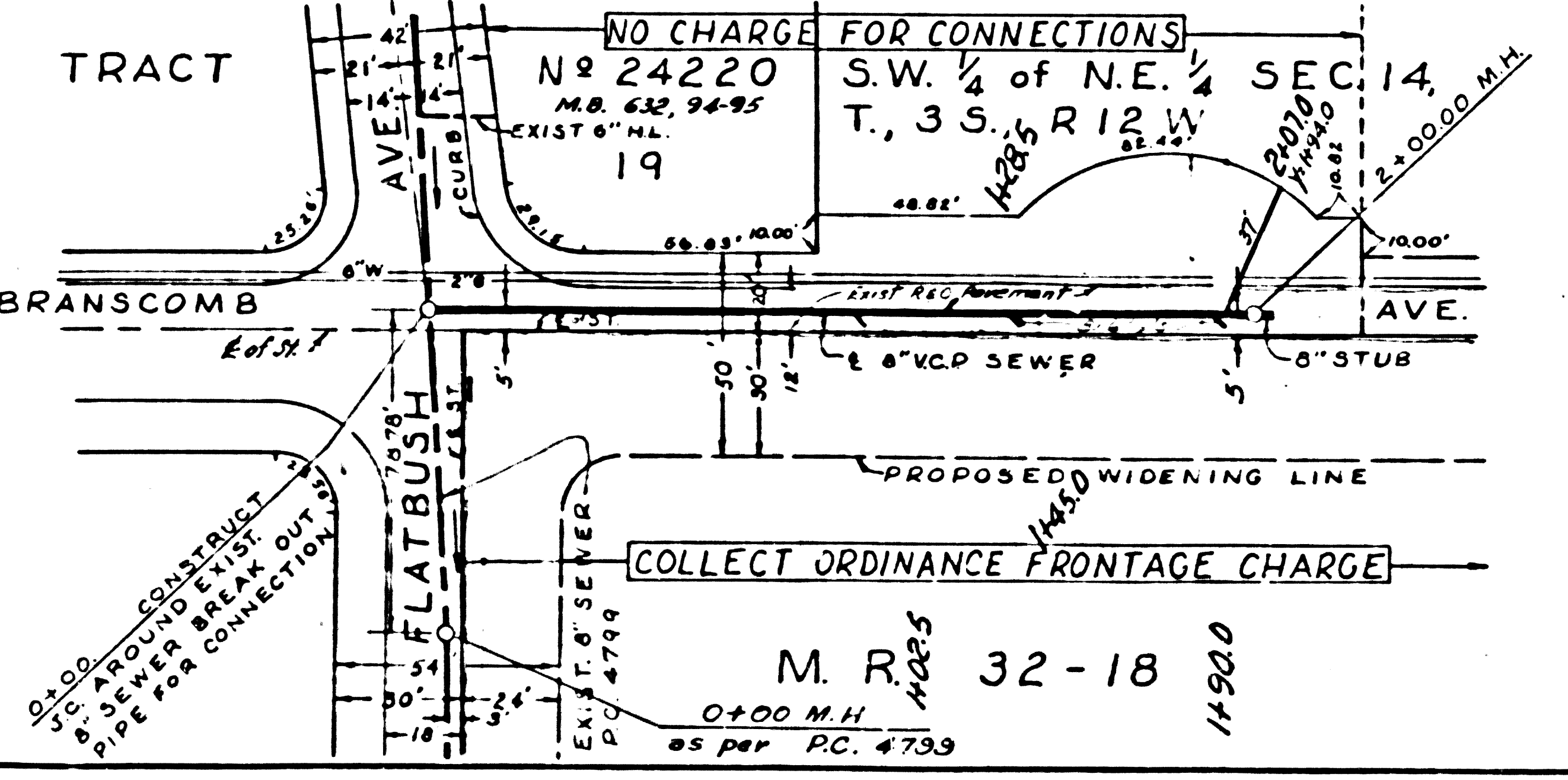
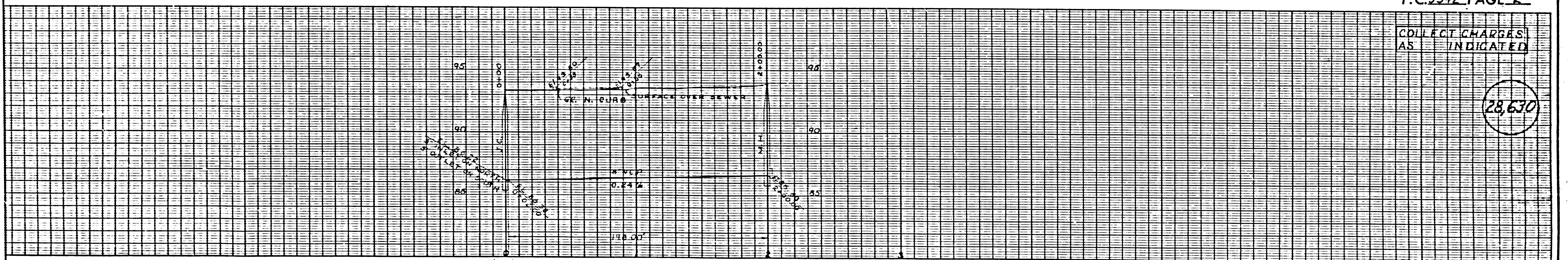
APPROVED, JOHN A. LAMBIE, CITY ENGINEER
 APPROVED, C.E. COMPTON, CHIEF ENGINEER
 CO. SAN. DIST. NO. 18
 BY *C.E. Compton* ASST. SANITATION ENGINEER
 BY *J. Schweitzer, Jr.* OFFICE ENGINEER
 CHECKED BY *J.V. White* 12-24-59
 OFFICE OF CITY ENGINEER, REG. C. E. NO. 3446

SUBMITTED BY *John L. Eaton* 12-21-59
 CERRITOS REGIONAL ENGINEER, R.C.E. 3871

P.C. 5342 PAGE 2

COLLECT CHARGES AS INDICATED

28,630



M. R. 32-18
 0+00 M.H.
 \$5 PER PC. 4733