

PICO RIVERA BLDG. DIST. NO. 11.01

PROFILE ALIGNMENT AND GRADE OF P.C. 5345
 SANITARY SEWERS PAGE 1
 TO BE CONSTRUCTED IN
 TRACT No 24996

PRIVATE CONTRACT NO. 5345

W.S. 36
 1 SHEET OF 2 PAGES
 SCALE: VERT. 1"=4'
 HORIZ. 1"=40' OCT. 1959
 PREPARED IN THE OFFICES OF
 KEMMERER ENGR. CO., INC.
 BY: Robert R. Flores
 REG. C. E. NO. 11349
 FOR LEGEND SEE PLAN NO. S-A-64

29,096

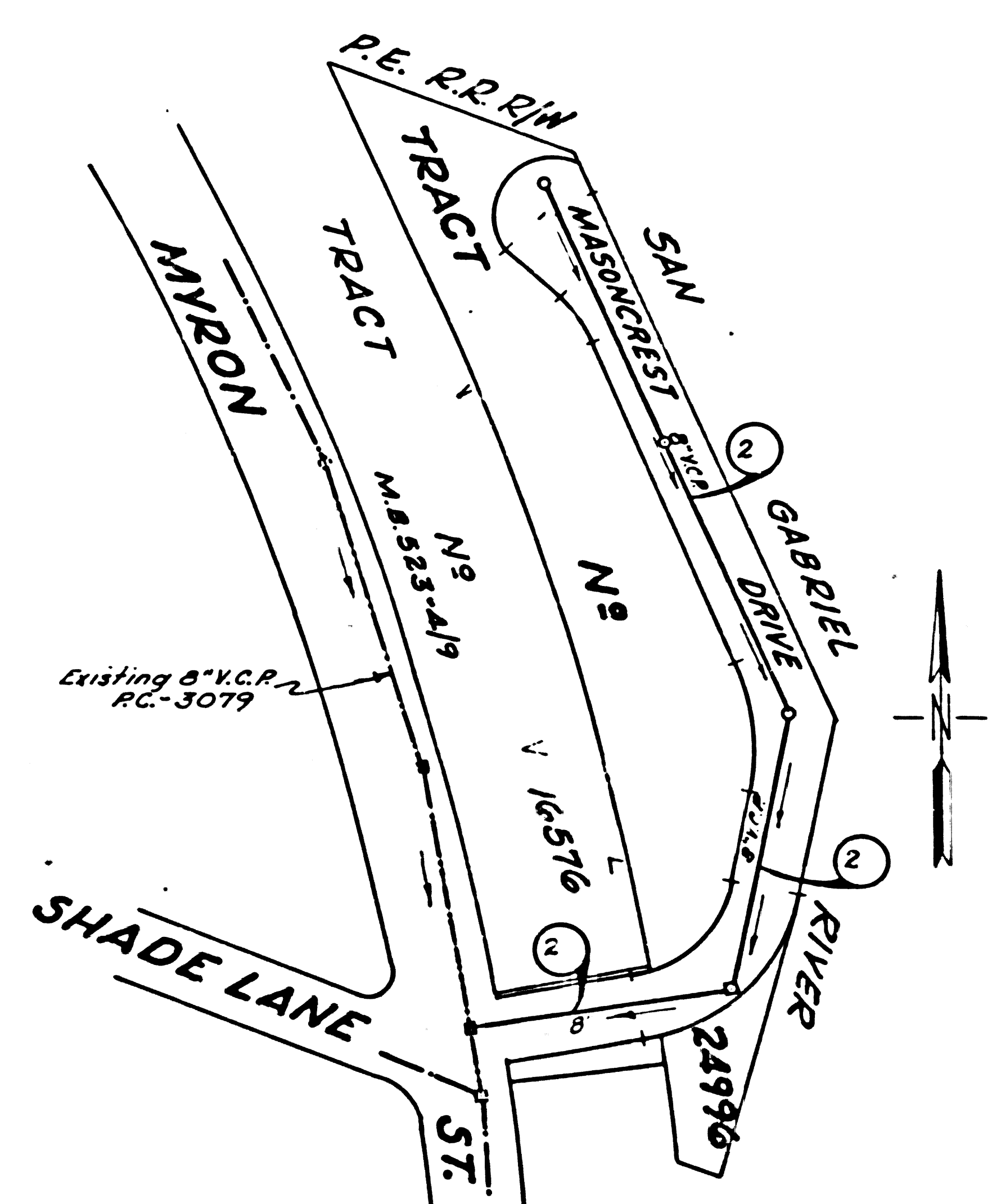
- NOTES:
1. PROFILE STAKES ON THE PROPERTY LINE OR PROPERTY LINES PRODUCED AT RIGHT ANGLES TO THE SEWER LINE AT THE CENTER LINE OF EACH MANHOLE.
 2. NO REPRESENTATIVE OF THE CITY ENGINEER WILL SURVEY OR LAY OUT ANY PORTION OF THE WORK.
 3. THE OWNER OR HIS AUTHORIZED REPRESENTATIVE SHALL FURNISH THE CITY ENGINEER WITH GRADE SHEETS AND STATIONING FOR ALL HOUSE LATERALS AND Y BRANCHES AND SHALL PROVIDE STAKES FOR THEM AT THEIR PROPER LOCATIONS WITH STATIONING PLAINLY MARKED. ANY CHANGE IN LOCATION SHALL BE REQUESTED IN WRITING BY THE OWNER OR HIS REPRESENTATIVE.
 4. THE PRIVATE ENGINEER SHALL FURNISH THE HOUSE LATERAL DEPTH AT THE PROPERTY LINE BELOW THE TOP OF CURB ELEVATION FOR EACH HOUSE LATERAL ON THE GRADE SHEET.
 5. NO REVISIONS SHALL BE MADE IN THESE PLANS WITHOUT THE APPROVAL OF THE CITY ENGINEER.
 6. USE STANDARD MANHOLE FRAMES AND COVERS, S-117, EXCEPT AS NOTED.
 7. USE STANDARD STRENGTH PIPE.
 8. USE CEMENT MORTAR OR "WEDGE-LOCK" OR "SPEED-SEAL" FOR ALL V.C.P. JOINTS PER SPECS. SECS. 16 & 48.
 9. RESURFACE ALL TRENCH WITHIN PAVED AREA TO MEET L.A. COUNTY ROAD DEPT. OR CALIF. STATE HIGHWAY REQUIREMENTS IN ACCORDANCE WITH RESULTS.
 10. ENCASE FOUR FEET OF SEWER AT POINTS OF INTERFERENCE WITH P.O.S. CASE III, S-117.
 11. _____
 12. ALL STRUCTURES SHALL BE BRICK SEWER STRUCTURES, S-104, EXCEPT AS NOTED.
 13. FOR ALLOWABLE LEAKAGE TEST USE FORMULA NO. 1, SPECS. SEC. 84.
 14. MANHOLE TOPS IN UNIMPROVED RIGHTS-OF-WAY TO BE SIX INCHES ABOVE FINISHED GRADE.
 15. THE CONTRACTOR SHALL NOTIFY THE CONSTRUCTION & STORM DRAIN DIVISION BY TELEPHONE, MADISON 3-417, EXT. 242, AT LEAST TWENTY-FOUR HOURS BEFORE STARTING ANY WORK UNDER THIS L. TRACT.
 16. Y'S TO BE LAID HORIZONTAL AND HOUSE LATERALS TO BE CONSTRUCTED WITH 1/4" RISE PER FOOT TO PROPERTY LINE.

NOTE:
 GRADES TO WHICH THIS IMPROVEMENT IS TO BE CONSTRUCTED ARE SHOWN ON PLANS AND PROFILES. GRADE POINTS FOR TOP OF CURBS, CENTER LINE OF STREETS OR CENTER LINE OF ALLEYS ARE SHOWN BY CIRCLES ON PROFILES AT ALL POINTS BETWEEN DESIGNATED POINTS THE GRADE SHALL BE ESTABLISHED SO AS TO CONFORM TO A STRAIGHT LINE DRAWN BETWEEN SAID DESIGNATED POINTS.
 ELEVATIONS ARE IN FEET ABOVE U.S.C. & G.S. SEA LEVEL DATUM OF 1929.
 THIS DRAWING AND THE DATA HEREON ARE HEREBY MADE A PART OF THE SPECIFICATIONS.
 WORK SHALL BE CONSTRUCTED ACCORDING TO SPECIFICATIONS ON FILE IN THE OFFICE OF THE CITY ENGINEER AND SHALL BE PROSECUTED ONLY IN THE PRESENCE OF THE CITY ENGINEER.
 BEFORE WORK CAN BE STARTED THE CONTRACTOR MUST OBTAIN A PERMIT TO EXCAVATE IN CITY STREETS FROM THE L. A. COUNTY ROAD DEPT. DISTRICT OFFICE NO. 4 AND MAKE A DEPOSIT WITH THE CITY OF PICO RIVERA, 640 S. PASSIONS SUFFICIENT TO COVER THE COST OF CONSTRUCTION INSPECTION AND RECORD PLANS.
 APPROVAL OF THIS PLAN BY THE CITY OF PICO RIVERA DOES NOT CONSTITUTE A REPRESENTATION AS TO THE ACCURACY OF THE LOCATION OR THE EXISTENCE OR NON-EXISTENCE OF ANY UNDERGROUND UTILITIES PIPE, OR STRUCTURE WITHIN THE LIMITS OF THIS PROJECT. THIS NOTE APPLIES TO ALL PAGES.
 IF WORK IS TO BE DONE IN A STATE HIGHWAY, A PERMIT MUST BE OBTAINED FROM THE STATE OF CALIFORNIA, DIVISION OF HIGHWAYS, 128 SOUTH SPRING STREET.

CITY OF PICO RIVERA, CALIFORNIA

APPROVED, JOHN A. LAMBIE, CITY ENGINEER APPROVED, C.R. COMPTON, CHIEF ENGINEER
 CO. SAN. DIST. NO. 18
 BY: C. E. P... OFFICE ENGINEER
 CHECKED BY: S.W. Under 2-15-60
 OFFICE OF CITY ENGINEER, REG. C. E. NO. 3406

SUBMITTED BY: John L. F... 2-15-60
 177 CARRITOS REGIONAL ENGINEER, REG. C. E. NO. 3871

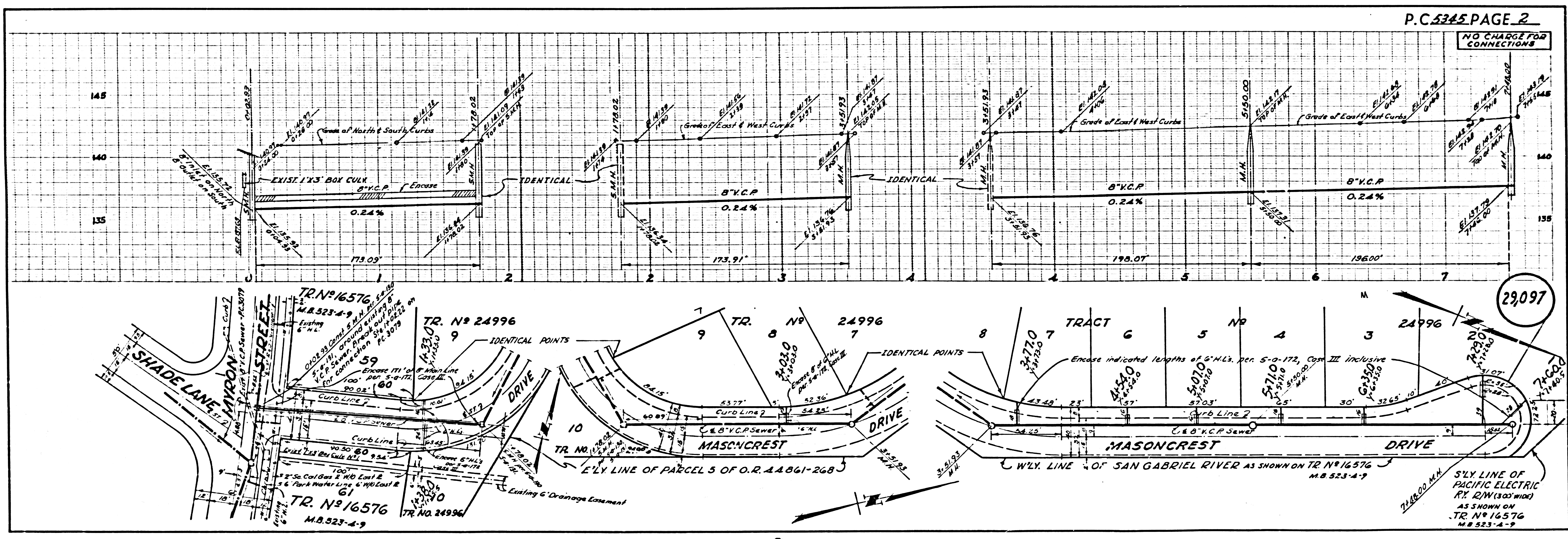


INDEX MAP
 SCALE=1/100'
 TRACT No 24996
 P.C.-5345

BENCHMARK: S.V. 2899
 E. & B. Nailin Curb Burke St 160'
 E. of driveway to house # 9739 Burke
 St 33' W. of end of curb
 (Rivera Quad 1955) ELEV. 144.954

REVISION:
 Relocate M.H. @ Sta. 0+00 as shown
 on page 2 to point 4.88' N. of E.
 Masoncrest Dr.
 Approved: John L. F... 4-22-60

NO CHARGE FOR
 CONNECTIONS
 S. Wickland 2-15-60



P.C. 5345 PAGE 2

NO CHARGE FOR CONNECTIONS

29,097