

PUENTE BLDG. DIST. NO. 2

PROFILE ALIGNMENT AND GRADE OF
SANITARY SEWERS PAGE 1
TO BE CONSTRUCTED IN J.N. 0352.17

TRACT NO. 24933
PRIVATE CONTRACT NO. 5347

W.S. 38
— 2 SHEETS; — 4 PAGES

SCALE: VERT. 1" = 4' HORIZ. 1" = 40' NOV. 1, 1959

PREPARED IN THE OFFICES OF
KEMMERER ENGINEERING CO., INC.

By: Robert R. Flaws
REG. C. E. NO. 11349

FOR LEGEND SEE PLAN NO. S-A-64

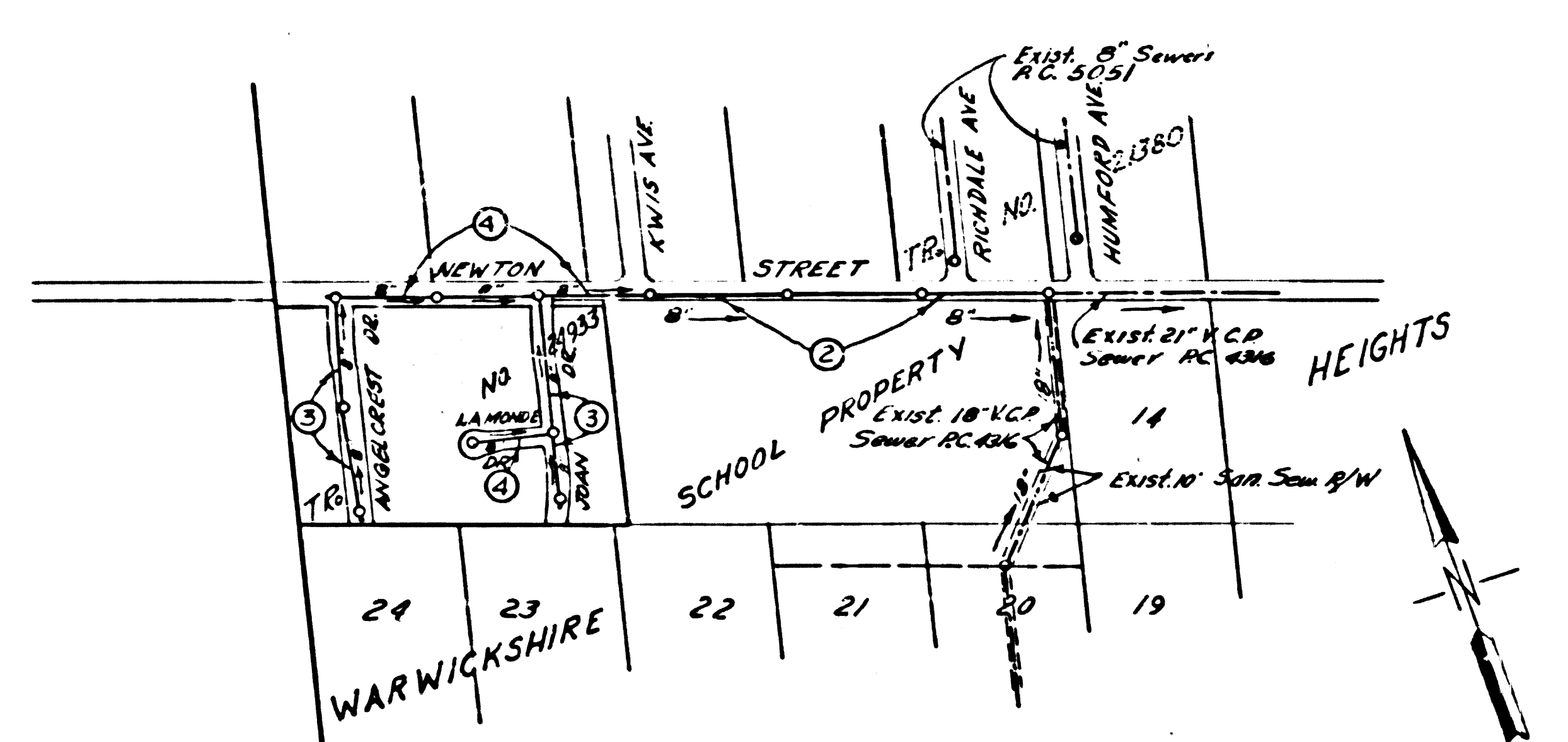
NOTE:
GRADES TO WHICH THIS IMPROVEMENT IS TO BE CONSTRUCTED ARE SHOWN ON PLANS AND PROFILES. GRADE POINTS FOR TOP OF CURBS, CENTER LINE OF ALLEYS ARE SHOWN BY CIRCLES ON PROFILES. AT ALL POINTS BETWEEN DESIGNATED POINTS THE GRADE SHALL BE ESTABLISHED SO AS TO CONFORM TO A STRAIGHT LINE DRAWN BETWEEN SAID DESIGNATED POINTS.
ELEVATIONS ARE IN FEET ABOVE U.S.C. & G.S. SEA LEVEL DATUM OF 1929.
THIS DRAWING AND THE DATA HEREON ARE HEREBY MADE A PART OF THE SPECIFICATIONS AND SHALL BE CONSIDERED ACCORDING TO SPECIFICATIONS ON FILE IN THE OFFICE OF THE COUNTY ENGINEER.
BEFORE WORK CAN BE STARTED THE CONTRACTOR MUST OBTAIN A PERMIT TO EXCAVATE IN COUNTY STREETS FROM THE L. A. COUNTY ROAD DIST. DISTRICT OFFICE NO. 1 AND PAY A FEE OF \$75.00 TO THE COUNTY ENGINEER ROOM 324 PAN AMERICAN BUILDING, 333 SO. BROADWAY SUFFICIENT TO COVER THE COST OF CONSTRUCTION INSPECTION AND RECORD PLANS.
APPROVAL OF THIS PLAN BY THE COUNTY OF LOS ANGELES DOES NOT CONSTITUTE A REPRESENTATION AS TO THE ACCURACY OF THE LOCATION OF OR THE EXISTENCE OR NON-EXISTENCE OF ANY UNDERGROUND UTILITY PIPE, OR STRUCTURE WITHIN THE LIMITS OF THIS PROJECT. THIS NOTE APPLIES TO ALL PAGES.
IF WORK IS TO BE DONE IN A STATE HIGHWAY, A PERMIT MUST BE OBTAINED FROM THE STATE OF CALIFORNIA, DIVISION OF HIGHWAYS, 128 SOUTH SPRING STREET.

COUNTY OF LOS ANGELES, CALIFORNIA

APPROVED, JOHN A. LAMBIE, COUNTY ENGINEER APPROVED, C. J. Thompson, CHIEF ENGINEER

By: C. E. Johnson By: J. J. Thompson
REG. C. E. NO. 11349 REG. C. E. NO. 11349
SANITATION ENGINEER OFFICE ENGINEER

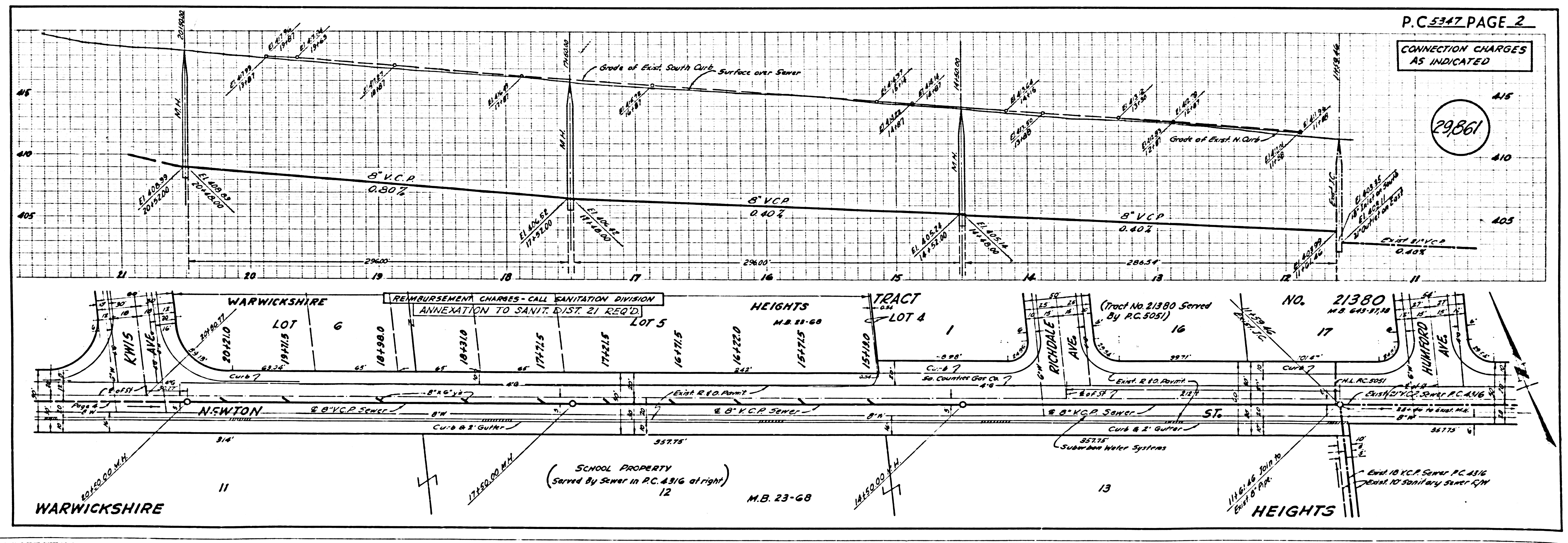
CHECKED BY Sk. Vidua 5-19-60
OFFICE OF COUNTY ENGINEER, REG. C. E. NO. 9404



INDEX MAP
TRACT NO. 24933
SCALE: 1" = 400'

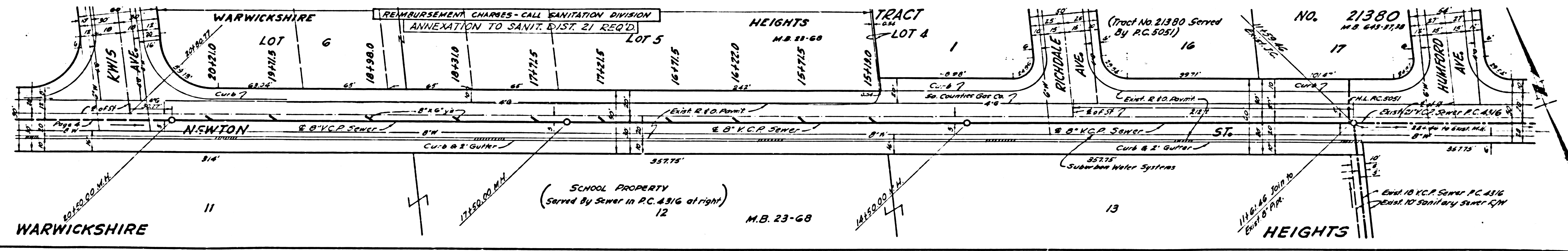
B.M. 561619 L.B.M. in S. Co. of Newton St. 198' W. of east 10' way yard, 198' W. of Kwis Ave. 8120' S. E. Newton St. Elevation 420.294. (Whittier Quad 1955 Adj.)

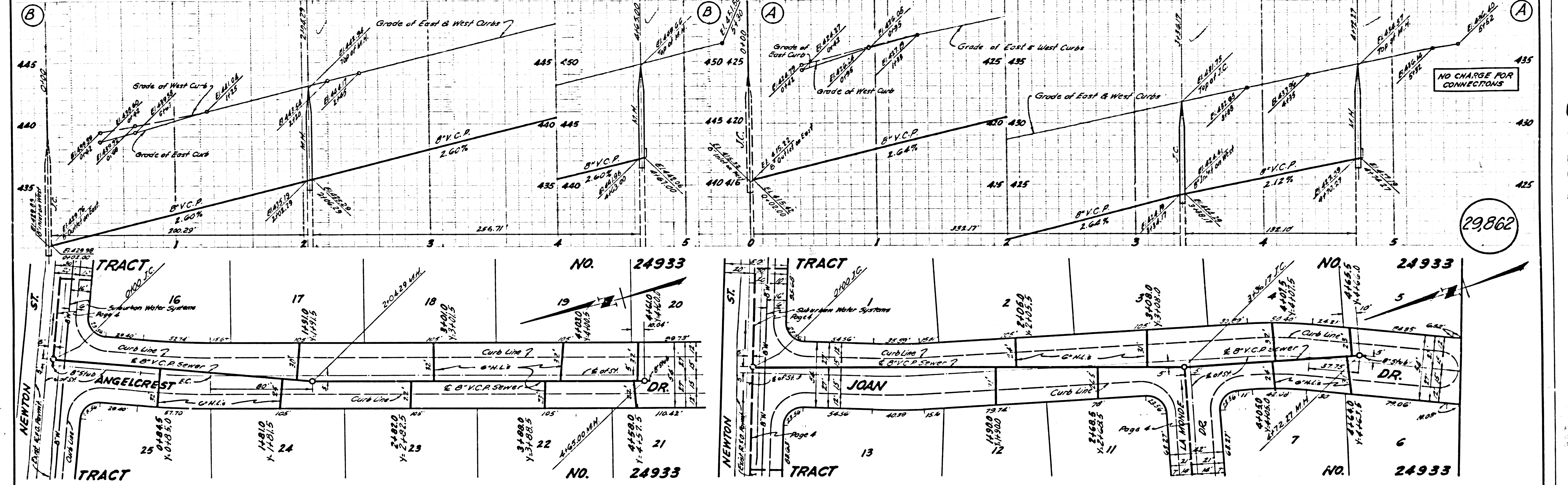
CONNECTION CHARGES AS INDICATED
T. T. Dennis 5-18-60



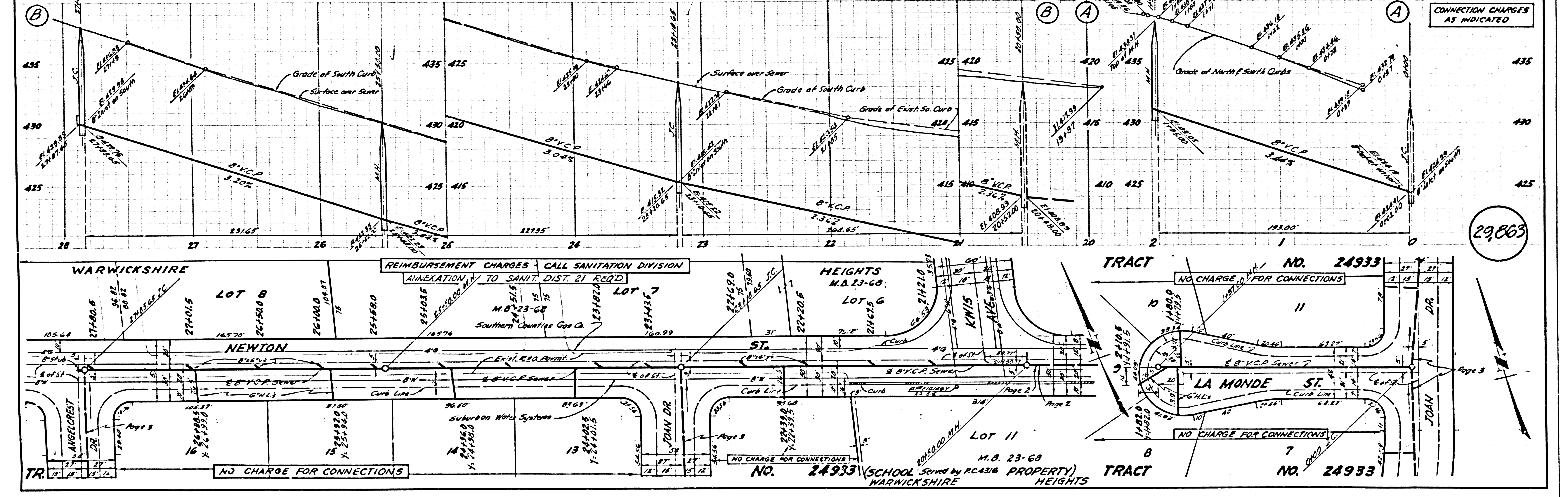
P.C. 5347 PAGE 2
CONNECTION CHARGES AS INDICATED

29,861





29,862



29,863

CONNECTION TRACT 24933