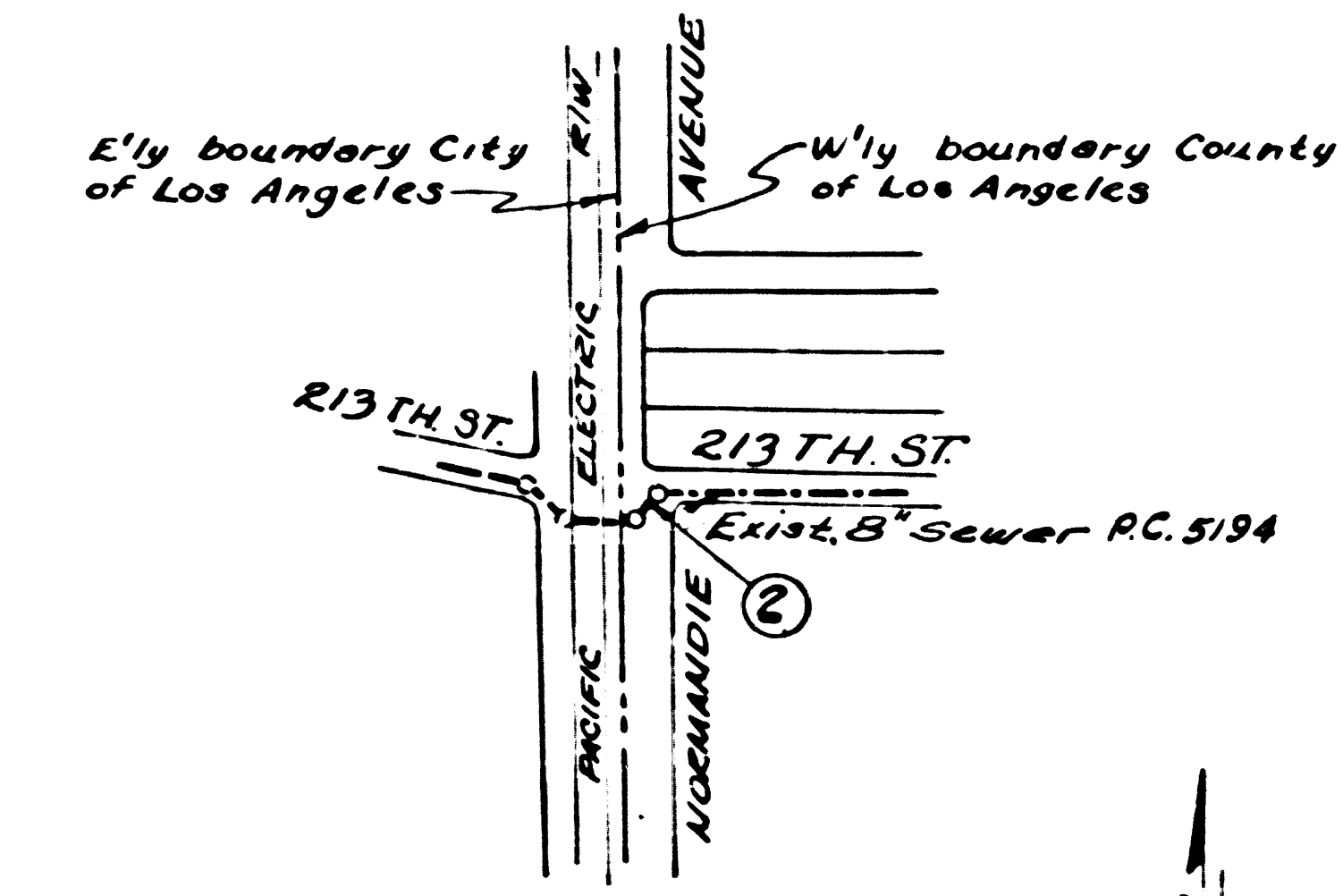


213th ST. EXTENSION
 PRIVATE CONTRACT NO. 5349

W.S. 28
 1 SHEET, 2 PAGES
 SCALE: VERT. 1" = 4' HORZ. 1" = 40' Nov , 1959
 PREPARED IN THE OFFICES OF
ENGINEERING SERVICE CORPORATION 28,776
 By E. J. Keen
 REG. C. E. NO. 2872
 FOR LEGEND SEE PLAN NO. S-A-64

B.M. Elev. 30,395 (1955 Precise) U.S.C. & G.S.
 Disc Marked R-780-1946 set in conc.
 past 2' West of West curb of Normandie
 Avenue, 0.4 mi. South of 208th Street, 31'
 South of Pole # 189650E.



**INDEX MAP
 SCALE
 1" = 400'
 P.C. 5349**

**NO CHARGE FOR
 CONNECTIONS**
 as noted 12-17-59

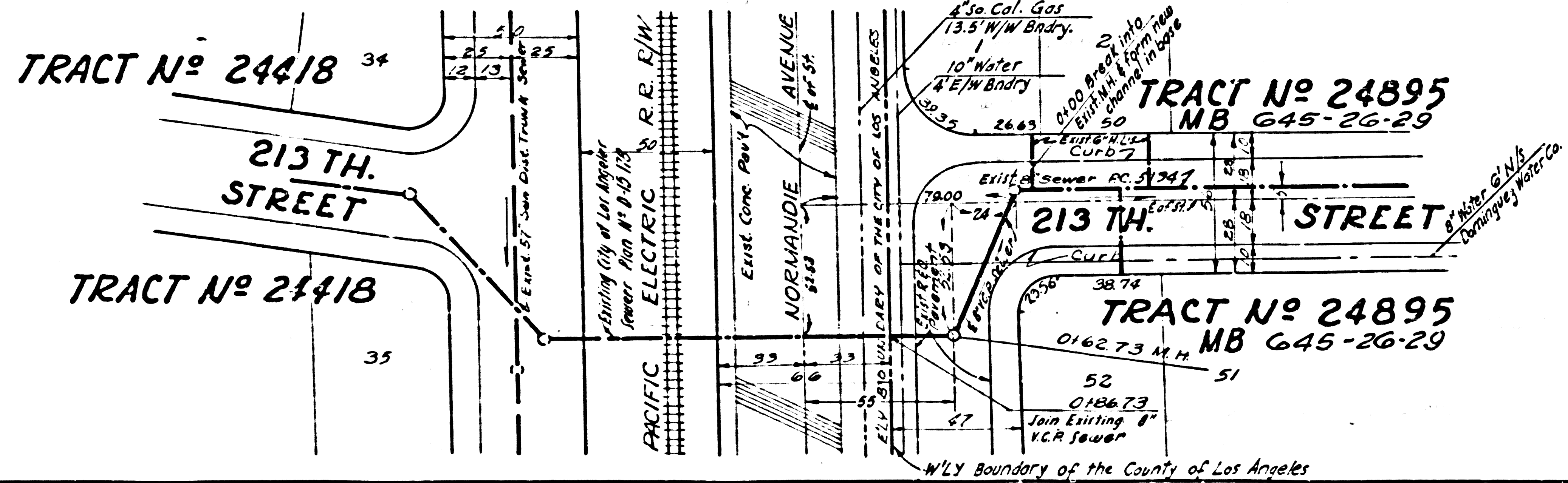
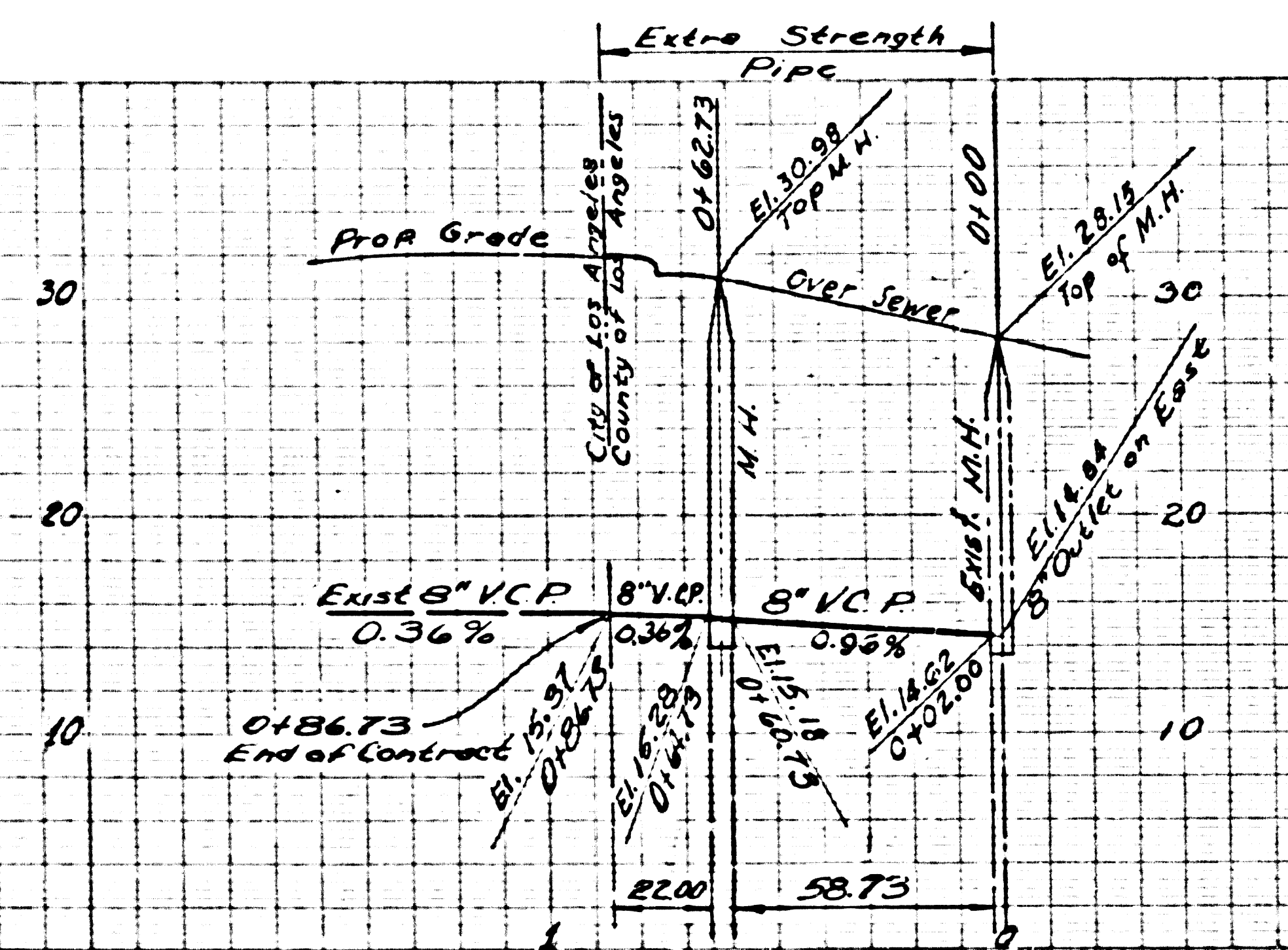
- NOTES
1. PROVIDE STAKES ON THE PROPERTY LINE OR PROPERTY LINES PRODUCED AT RIGHT ANGLES TO THE SEWER LINE AT THE CENTER LINE OF EACH MANHOLE.
 2. NO REPRESENTATIVE OF THE COUNTY ENGINEER WILL SURVEY OR LAY OUT ANY PORTION OF THE WORK.
 3. THE OWNER OR HIS AUTHORIZED REPRESENTATIVE SHALL FURNISH THE COUNTY ENGINEER WITH GRADE SHEETS AND STATIONING FOR ALL HOUSE LATERALS AND T BRANCHES AND SHALL PROVIDE STAKES FOR THEM AT THEIR PROPER LOCATIONS WITH STATIONING PLAINLY MARKED. ANY CHANGE IN LOCATION SHALL BE REQUESTED IN WRITING BY THE OWNER OR HIS REPRESENTATIVE.
 4. THE PRIVATE ENGINEER SHALL FURNISH THE HOUSE LATERAL DEPTH AT THE PROPERTY LINE BELOW THE TOP OF CURB ELEVATION FOR EACH HOUSE LATERAL ON THE GRADE SHEET.
 5. NO REVISIONS SHALL BE MADE IN THESE PLANS WITHOUT THE APPROVAL OF THE COUNTY ENGINEER.
 6. USE STANDARD MANHOLE FRAMES AND COVERS, S-117, EXCEPT AS NOTED.
 7. USE STANDARD STRENGTH PIPE EXCEPT AS NOTED.
 8. USE CEMENT MORTAR OR "WEDGE-LOCK" OR "SPEED-SEAL" FOR ALL V.C.P. JOINTS PER SPECS., SECS. 36 & 48.
 9. RESURFACE ALL TRENCH WITHIN PAVED AREA TO MEET L.A. COUNTY ROAD DEPT. OR CALIF. STATE HIGHWAY REQUIREMENTS IN ACCORDANCE WITH PERMITS.
 10. ENCASE FOUR FEET OF SEWER AT POINTS OF INTERFERENCE WITH POLES, CASE III, S-172.
 11. ALL STRUCTURES SHALL BE BRICK SEWER STRUCTURES, S-104, EXCEPT AS NOTED.
 12. FOR ALLOWABLE LEAKAGE TEST USE FORMULA NO. 1, SPECS., SEC. 54.
 13. THE CONTRACTOR SHALL NOTIFY THE CONSTRUCTION & STORM DRAIN DIVISION BY TELEPHONE, MADISON 9-00, EXT. 302, AT LEAST TWENTY FOUR HOURS BEFORE STARTING ANY WORK UNDER THIS CONTRACT.
 14. STANDARD SPECIFICATIONS DATED MAY 15, 1959 APPLY IN THE CONSTRUCTION OF THIS PROJECT.

ENGINEERING SERVICE CORPORATION	
1127 W. WASHINGTON BLVD.	
LOS ANGELES 15, CALIF.	RI. 9-7281
REVISIONS	
	TRACED BY <u>M.K.</u>
	DES'G'D BY <u>D.H.</u>
	CK'D BY <u>A.A.M.</u>
	SUBMITTED
SUB STRUCTURES OK'D	
W. O. NO.	DWG. NO.
6340-17	10-21-59
DATE	SCALE
10-21-59	AS SHOWN
L. B.	F. B.

NOTE:
 GRADES TO WHICH THIS IMPROVEMENT IS TO BE CONSTRUCTED ARE SHOWN ON PLANS AND PROFILES. GRADE POINTS FOR TOP OF CURBS, CENTER LINE OF STREETS, OR CENTER LINE OF ALLEYS ARE SHOWN BY CIRCLES ON PROFILES. AT ALL POINTS BETWEEN DESIGNATED POINTS THE GRADE SHALL BE ESTABLISHED SO AS TO CONFORM TO A STRAIGHT LINE DRAWN BETWEEN SAID DESIGNATED POINTS.
 ELEVATIONS ARE IN FEET ABOVE U.S.C. & G.S. SEA LEVEL DATUM OF 1929.
 THIS DRAWING AND THE DATA HEREON ARE HEREBY MADE A PART OF THE SPECIFICATIONS.
 WORK SHALL BE CONSTRUCTED ACCORDING TO SPECIFICATIONS ON FILE IN THE OFFICE OF THE COUNTY ENGINEER AND SHALL BE PROSECUTED ONLY IN THE PRESENCE OF THE COUNTY ENGINEER.
 BEFORE WORK CAN BE STARTED, THE CONTRACTOR MUST OBTAIN A PERMIT TO EXCAVATE IN COUNTY STREETS FROM THE L.A. COUNTY ROAD DEPT., DISTRICT OFFICE NO. 50, AND PAY A PERMIT FEE TO THE COUNTY ENGINEER, ROOM 324 PAM AMERICAN BUILDING, 324 N.O. BROADWAY SUFFICIENT TO COVER THE COST OF CONSTRUCTION INSPECTION AND RECORD PLANS.
 APPROVAL OF THIS PLAN BY THE COUNTY OF LOS ANGELES DOES NOT CONSTITUTE A REPRESENTATION AS TO THE ACCURACY OF THE LOCATION OF OR THE EXISTENCE OR NON-EXISTENCE OF ANY UNDERGROUND UTILITY PIPE, OR STRUCTURE WITHIN THE LIMITS OF THIS PROJECT. THIS NOTE APPLIES TO ALL PAGES.
 IF WORK IS TO BE DONE IN A STATE HIGHWAY, A PERMIT MUST BE OBTAINED FROM THE STATE OF CALIFORNIA, DIVISION OF HIGHWAYS, 130 SOUTH SPRING STREET.
COUNTY OF LOS ANGELES, CALIFORNIA
 APPROVED, JOHN A. LAMBIE, COUNTY ENGINEER APPROVED, C.R. COMPTON, CHIEF ENGINEER
 CO. SEAL, DIST. NO. 8
 BY E.E. Pender 4777 SANITATION ENGINEER BY H. J. ... OFFICE ENGINEER
 CHECKED BY J.W. ... 12-22-59
 OFFICE OF COUNTY ENGINEER, REG. C. E. NO. 9406
 Submitted By Jack C. ...
 PALMS VERDES, CENTINELA VALLEY REGIONAL ENGINEER

**NO CHARGE FOR
 CONNECTIONS**

28,777



**CONTRACTOR SHALL NOTIFY THE COUNTY
 OF LOS ANGELES SEWER MAINTENANCE SECT.
 Mr. G.D. STOTT, RA 94747 EXT. 461 BEFORE
 CONNECTION IS MADE AT STA. 0+86.73**