

NORWALK BLDG. DIST. NO. 4.2

PROFILE ALIGNMENT AND GRADE OF **P.C. 5359**
SANITARY SEWERS **PAGE 1**
 TO BE CONSTRUCTED IN **J.N. 0352.29**
TRACT No 24512

PRIVATE CONTRACT NO. 5359
 J.N. 0352.29
 W.S. 34

3 SHEETS; 5 PAGES
 SCALE: VERT. 1"=4'
 HORIZ. 1"=40'
 OCTOBER, 1959

PREPARED IN THE OFFICES OF
BARNETT, HOPEN & SMITH
 CIVIL ENGINEERS & LAND SURVEYORS
 By: *Arnold A. Bennett*
 REG. C. E. NO. 1216

29,064

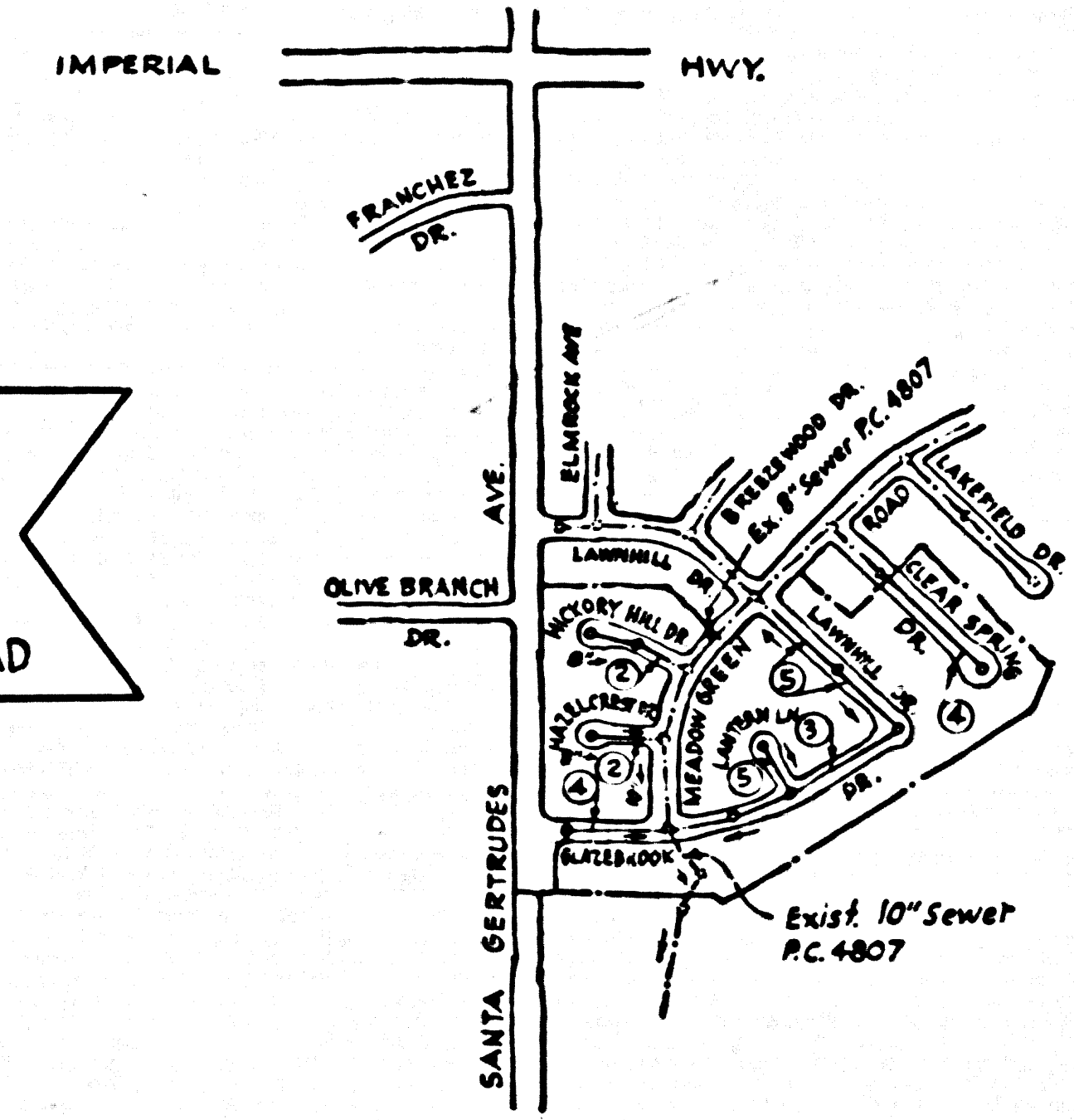
FOR LEGEND SEE PLAN NO. S-A-64

NOTE: GRADES TO WHICH THIS IMPROVEMENT IS TO BE CONSTRUCTED ARE SHOWN ON PLANS AND PROFILES. GRADE POINTS FOR TOP OF CURBS, CENTER LINE OF SIDEWALKS OR CENTER LINE OF ALLEYS ARE SHOWN BY CIRCLES ON PROFILES. AT ALL POINTS BETWEEN DESIGNATED POINTS THE GRADE SHALL BE ESTABLISHED SO AS TO CONFORM TO A STRAIGHT LINE DRAWN BETWEEN SAID DESIGNATED POINTS.
 ELEVATIONS ARE IN FEET ABOVE U.S.C. & G.S. SEA LEVEL DATUM OF 1929.
 THIS DRAWING AND THE DATA HEREON ARE HEREBY MADE A PART OF THE SPECIFICATIONS.
 WORK SHALL BE CONSTRUCTED ACCORDING TO SPECIFICATIONS ON FILE IN THE OFFICE OF THE COUNTY ENGINEER AND SHALL BE PROSECUTED ONLY IN THE PRESENCE OF THE COUNTY ENGINEER.
 BEFORE WORK CAN BE STARTED, THE CONTRACTOR MUST OBTAIN A PERMIT TO EXCAVATE IN COUNTY STREETS FROM THE COUNTY ROAD DEPT., DISTRICT OFFICE NO. 4, AND PAY A FEE WITH THE COUNTY ENGINEER, ROOM 324 PAM AMERICAN BUILDING, 230 SO. BROADWAY SUBJECT TO COVER THE COST OF CONSTRUCTION INSPECTION AND RECORD PLANS.
 APPROVAL OF THIS PLAN BY THE COUNTY OF LOS ANGELES DOES NOT CONSTITUTE A REPRESENTATION AS TO THE ACCURACY OF THE LOCATION OR THE EXISTENCE OR NON-EXISTENCE OF ANY UNDERGROUND UTILITY PIPE, OR STRUCTURE WITHIN THE LIMITS OF THIS PROJECT. THIS NOTE APPLIES TO ALL PAGES.
 IF WORK IS TO BE DONE IN A STATE HIGHWAY, A PERMIT MUST BE OBTAINED FROM THE STATE OF CALIFORNIA, DIVISION OF HIGHWAYS, 130 SOUTH SPRING STREET.

COUNTY OF LOS ANGELES, CALIFORNIA

APPROVED, JOHN A. LAMIE, COUNTY ENGINEER
 APPROVED, C.R. COMPTON CHIEF ENGINEER
 CO. SEAL NO. 18
 BY: *C.E. Mundy* AS ST. SANITATION ENGINEER
 BY: *W. Williams* OFFICE ENGINEER
 CHECKED BY: *W. Williams* OFFICE OF COUNTY ENGINEER, REG. C. E. NO. 9466
 SUBMITTED BY: *John L. Eaton* 2-24-60
 CLEARING REGIONAL ENGINEER, REG. C. E. NO. 3871

B.M. SY 1140 Elev. 253.541
 L & N. Ctr. Conc. hdwl. ± 30' N. of IMPERIAL HWY ± 50' W. of 1/4 SANTA GERTRUDES AVE.
 1955 LA MIRADA QUAD



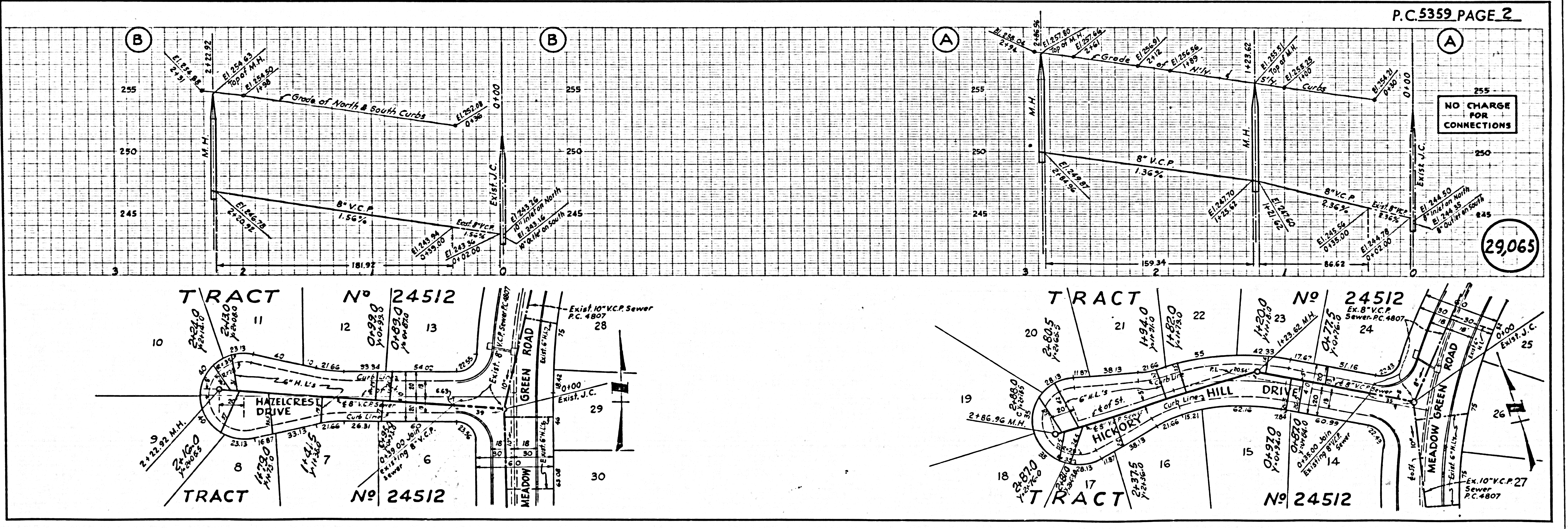
INDEX MAP
 P.C. 5359
 J.N. 0352.29
 TRACT No 24512
 SCALE: 1"=600'



NOTE: LOTS 25 TO 30 INC. TO BE SERVED BY EXIST. HOUSE LATERALS, IN P.C. 4807, IN MEADOW GREEN ROAD. LOTS 30 & 31 SERVED BY EXIST. 10" X 6" V'S IN RW

NO CHARGE FOR CONNECTIONS.

D. Hickland 2-24-60



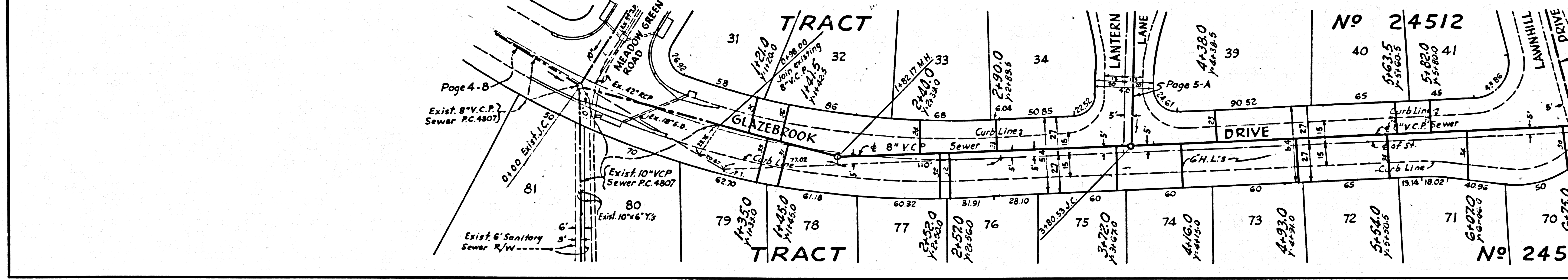
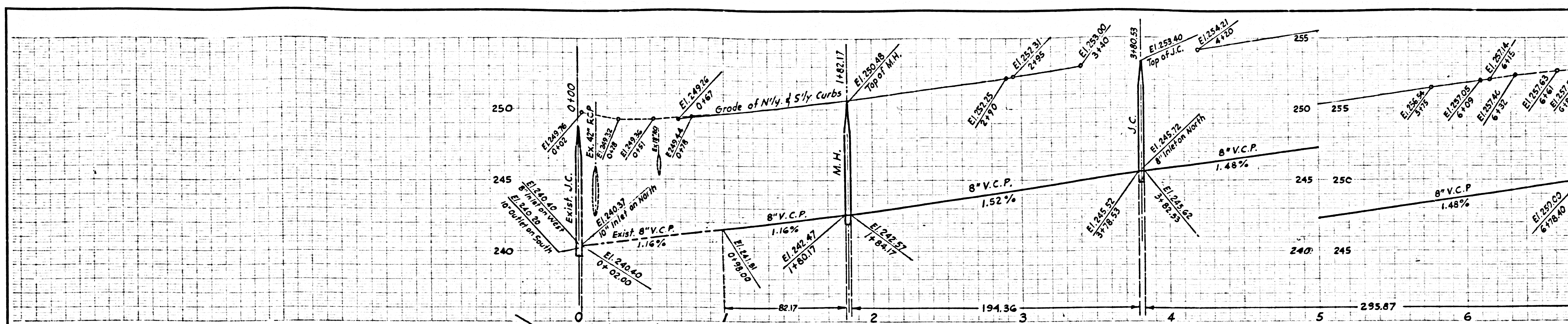
P.C. 5359 PAGE 2

NO CHARGE FOR CONNECTIONS.

29,065

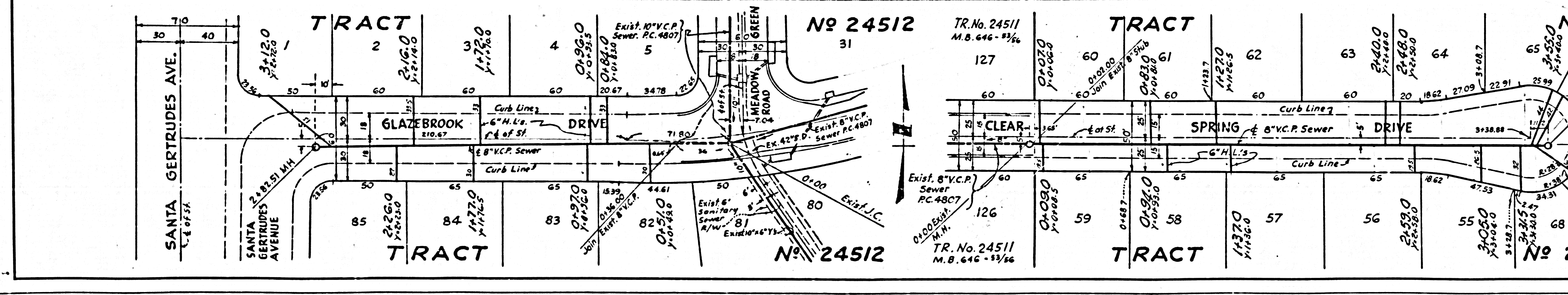
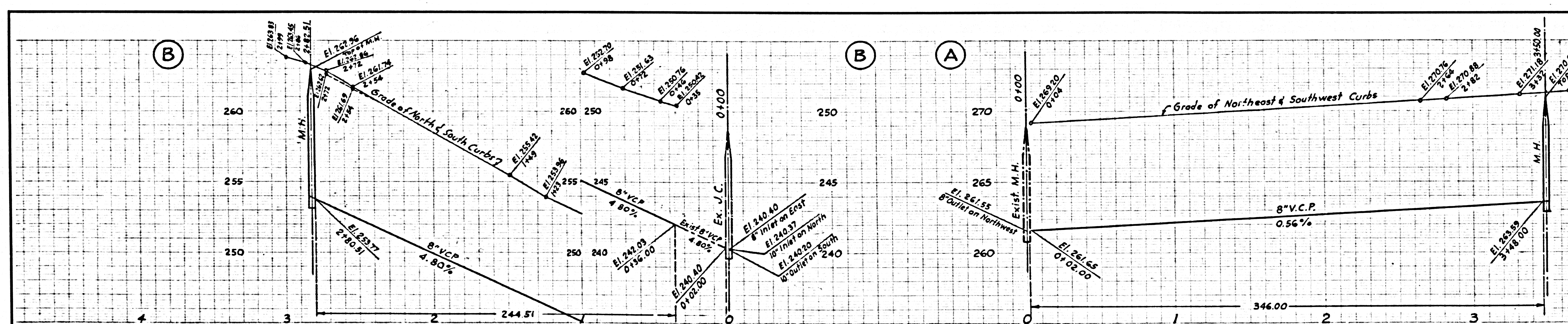
NO CHARGE FOR CONNECTIONS

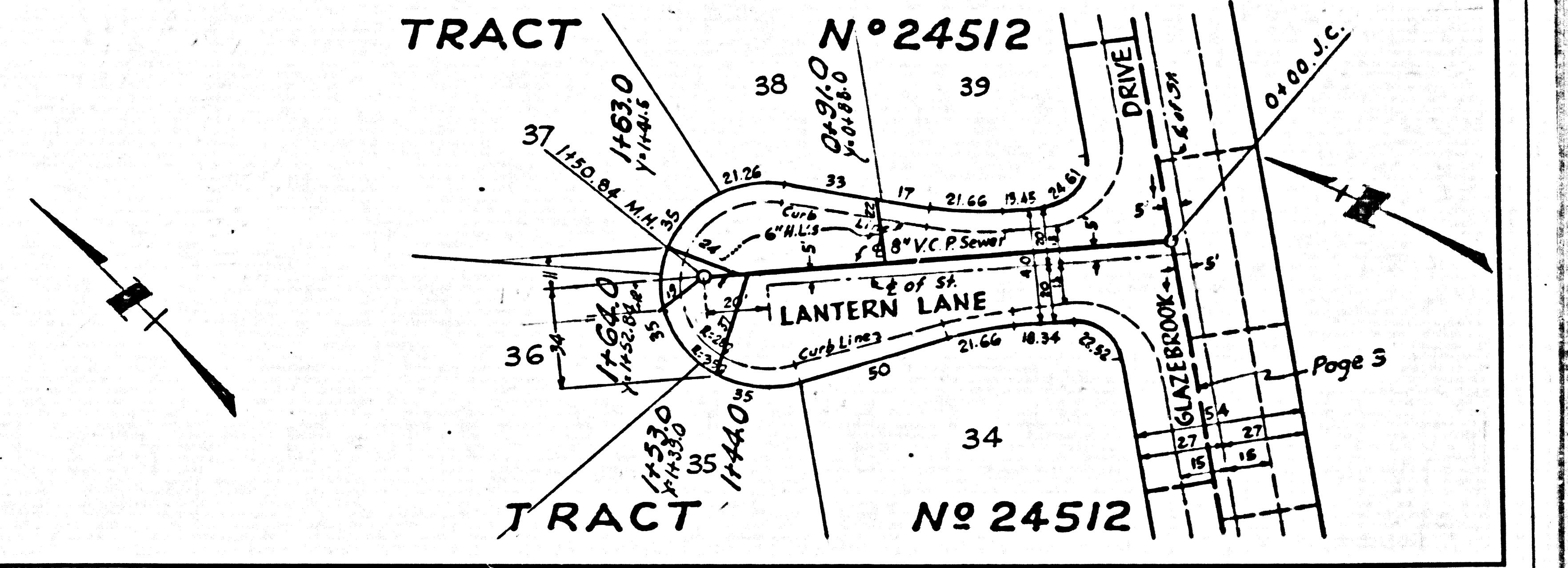
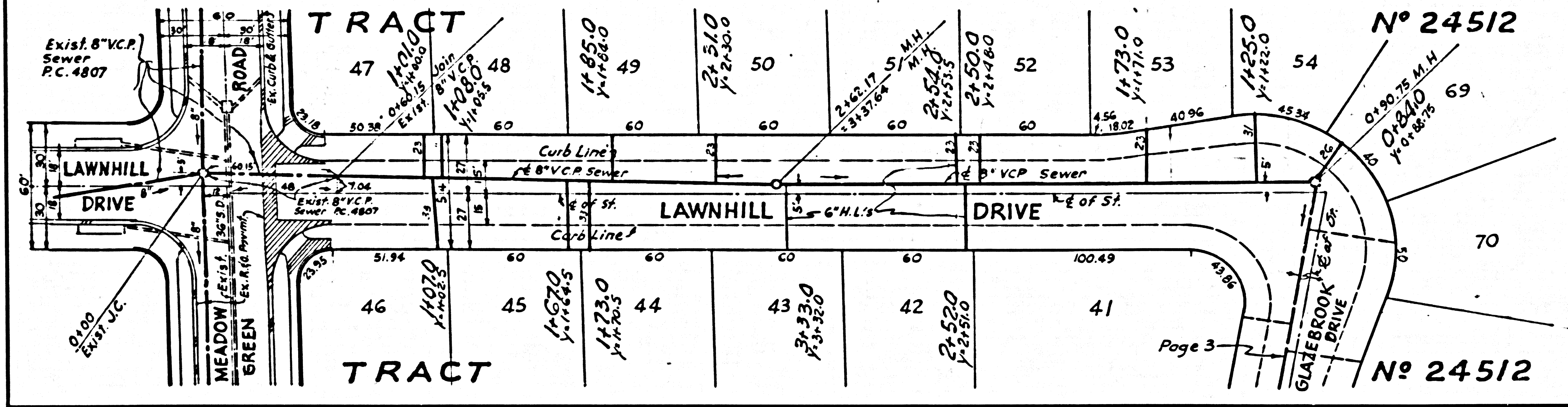
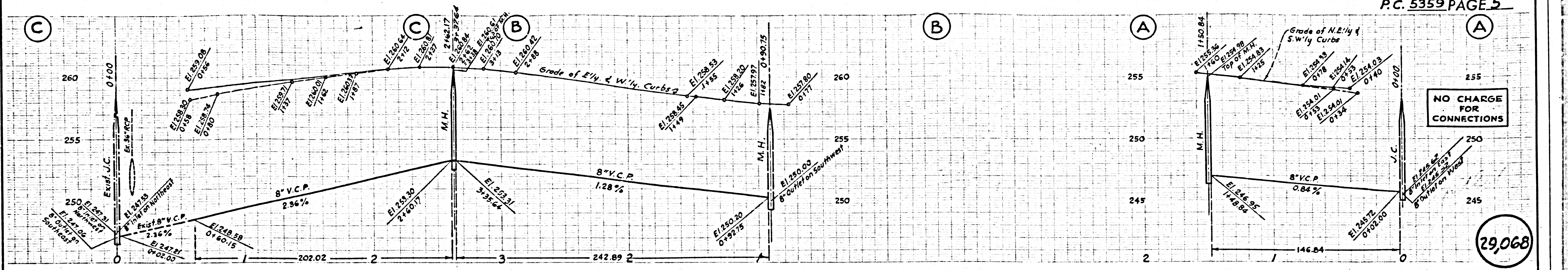
29,066



NO CHARGE FOR CONNECTIONS

29,067





DO NOT PRINT