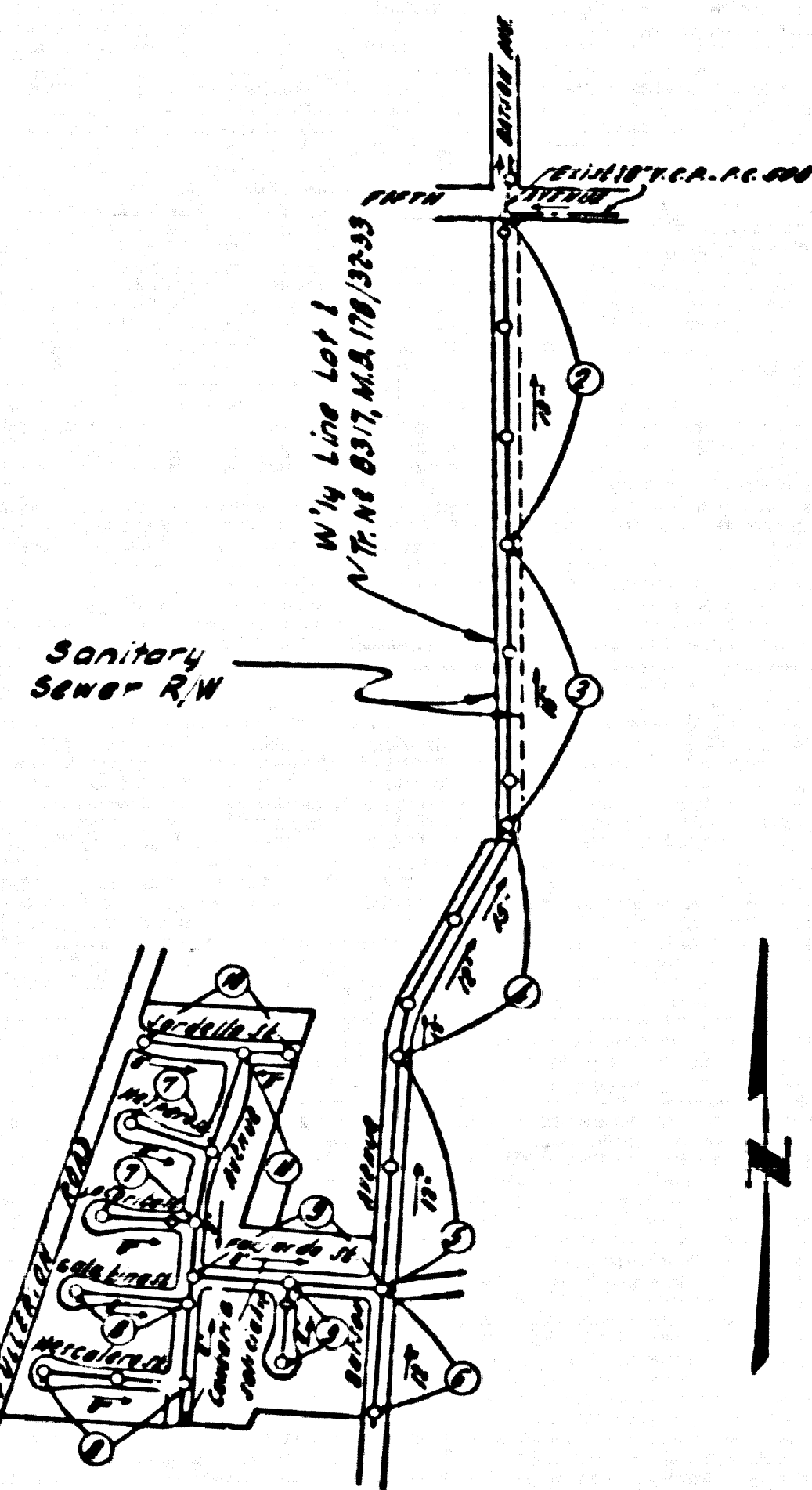


BENCH MARK B.M. 44-12
 FIFTH AVENUE ANAHEIM PUENTE ROAD & FULLERTON ROAD
 133' E. & 12' S. OF E. INTERSECTION OF FIFTH AVENUE &
 FULLERTON ROAD ON THE N.W. PROLONGATION OF THE E.W.
 EDGE OF FULLERTON ROAD. STD. C.S. MON. IN HANDHOLE
 STAMPED: BM 44-12 1955 R.E. 63
 F.B. 1366-119 1955 ADJ. ELEV. 483.600



INDEX MAP
 SCALE: 1" = 100'
 TRACT No. 25428

PUENTE BLDG. DIST. NO. 2

- NOTES:
1. PROVIDE STAKES ON THE PROPERTY LINE OR PROPERTY LINES PRODUCED AT RIGHT ANGLES TO THE SEWER LINE AT THE CENTER LINE OF EACH MANHOLE.
 2. NO REPRESENTATIVE OF THE COUNTY ENGINEER WILL SURVEY OR LAY OUT ANY PORTION OF THE WORK.
 3. THE OWNER OR HIS AUTHORIZED REPRESENTATIVE SHALL FURNISH THE COUNTY ENGINEER WITH GRADE SHEETS AND STATIONING FOR ALL HOUSE LATERALS AND T BRANCHES AND SHALL PROVIDE STAKES FOR THEM AT THEIR PROPER LOCATIONS WITH STATIONING PLAINLY MARKED. ANY CHANGE IN LOCATION SHALL BE REQUESTED IN WRITING BY THE OWNER OR HIS REPRESENTATIVE.
 4. THE PRIVATE ENGINEER SHALL FURNISH THE HOUSE LATERAL DEPTH AT THE PROPERTY LINE BELOW THE TOP OF CURB ELEVATION FOR EACH HOUSE LATERAL ON THE GRADE SHEET.
 5. NO REVISIONS SHALL BE MADE IN THESE PLANS WITHOUT THE APPROVAL OF THE COUNTY ENGINEER.
 6. USE STANDARD MANHOLE FRAMES AND COVERS, S-117.
 7. USE STANDARD STRENGTH PIPE EXCEPT AS NOTED.
 8. USE CEMENT MORTAR OR "WEDGE-LOCK" OR "SPEED-SEAL" FOR ALL V.C.P. JOINTS PER SPECS. SECS. M & W.
 9. RESURFACE ALL TRENCH WITHIN PAVED AREA TO MEET L.A. COUNTY ROAD DEPT. OR CALIF. STATE HIGHWAY REQUIREMENTS IN ACCORDANCE WITH PERMITS.
 10. ENCASE FOUR FEET OF SEWER AT POINTS OF INTERFERENCE WITH POLES, CASE W, S-117.
 11. HOUSE LATERALS TO BE CONSTRUCTED WITH INVERTS AT PROPERTY LINE FEET BELOW CURB GRADE EXCEPT AS NOTED.
 12. ALL STRUCTURES SHALL BE BRICK SEWER STRUCTURES, S-104.
 13. FOR ALLOWABLE LEAKAGE TEST USE FORMULA NO. SPECS. SEC. 14.
 14. MANHOLE TOPS IN UNIMPROVED RIGHTS-OF-WAY TO BE SIX INCHES ABOVE FINISHED GRADE.
 15. THE CONTRACTOR SHALL NOTIFY THE CONSTRUCTION & STORM DRAIN DIVISION BY TELEPHONE, MADISON 5-474, EXT. NO. 4 AT LEAST TWENTY-FOUR HOURS BEFORE STARTING ANY WORK UNDER THIS CONTRACT.
 16. STANDARD SPECIFICATIONS DATED JANU. 1960 APPLY IN THE CONSTRUCTION OF THIS PROJECT.
 17. NO CONSTRUCTION WILL BE PERMITTED IN FILLED AREAS UNLESS ACCEPTABLE CERTIFICATION IS SUBMITTED TO THE CONSTRUCTION DIVISION OF THE COUNTY ENGINEERS DEPARTMENT THAT RELATIVE COMPACTION IS GREATER THAN 80%.
 (A) IF COMPACTION IS LESS THAN 80% THE SEWER MUST BE CRADLED AS SHOWN ON PLANS PER S.A-765
 (C) IF COMPACTION IS GREATER THAN 80% NEITHER CRADLING NOR SPECIAL MANHOLE BASES WILL BE REQUIRED HOWEVER, JOINT COMPOUND MUST BE SUBSTITUTED FOR CEMENT MORTAR FOR ALL JOINTS IN FILLED AREAS.

REVISION
 Changed location of sewer line on page 3 and 4
 between Sta. 18+70.20 and Sta. 23+85.54
 APPROVED: *W.C. Poindexter*
 Office of County Engineer

COLLECT CHARGES
 AS INDICATED
 77. 2nd Edition 2-29-60

REVISION:
 Add M.B. of Station and 30
 on page 2.
 APPROVED: *W.C. Poindexter*
 Office of County Engineer

PROFILE ALIGNMENT AND GRADE OF P.C. 5360
 SANITARY SEWERS PAGE 1
 TO BE CONSTRUCTED IN
 TRACT No 25428

PRIVATE CONTRACT NO. 5360

W.S. 38
 6 SHEETS; 11 PAGES
 SCALE: VERT. 1" = 4' FEBRUARY, 1960
 HORIZ. 1" = 40' PREPARED IN THE OFFICES OF

By: *Edward J. Espinoza*
 REG. P. E. NO. 5828

29,136

FOR LEGEND SEE PLAN NO. S-A-84

NOTES:
 GRADES TO WHICH THIS IMPROVEMENT IS TO BE CONSTRUCTED ARE SHOWN ON PLANS AND PROFILE. GRADE POINTS FOR TOP OF CURBS, CENTER LINE OF STREETS OR CENTER LINE OF ALLEYS AS SHOWN BY CIRCLES ON PROFILES AT ALL POINTS BETWEEN DESIGNATED POINTS THE GRADE SHALL BE ESTABLISHED AS TO CONFORM TO A STRAIGHT LINE DRAWN BETWEEN SAID DESIGNATED POINTS.
 ELEVATIONS ARE IN FEET ABOVE U.S.C. & G.S. SEA LEVEL DATUM OF 1929.
 THIS DRAWING AND THE DATA HEREON ARE HEREBY MADE A PART OF THE SPECIFICATIONS.
 WORK SHALL BE CONSTRUCTED ACCORDING TO SPECIFICATIONS ON FILE IN THE OFFICE OF THE COUNTY ENGINEER AND SHALL BE PROSECUTED ONLY IN THE PRESENCE OF THE COUNTY ENGINEER.
 BEFORE WORK CAN BE STARTED THE CONTRACTOR MUST OBTAIN A PERMIT TO EXCAVATE IN COUNTY STREETS FROM THE L.A. COUNTY ROAD DIST. DISTRICT OFFICE NO. 1 AND PAY A FEE TO THE COUNTY ENGINEER ROOM 314 PAN AMERICAN BUILDING, 283 SO. BROADWAY SUFFICIENT TO COVER THE COST OF CONSTRUCTION INSPECTION AND RECORD PLANS.
 APPROVAL OF THIS PLAN BY THE COUNTY OF LOS ANGELES DOES NOT CONSTITUTE A REPRESENTATION AS TO THE ACCURACY OF THE LOCATION OF OR THE EXISTENCE OR NON-EXISTENCE OF ANY UNDERGROUND UTILITY PIPE, OR STRUCTURE WITHIN THE LIMITS OF THIS PROJECT. THIS NOTE APPLIES TO ALL PAGES.
 IF WORK IS TO BE DONE IN A STATE HIGHWAY, A PERMIT MUST BE OBTAINED FROM THE STATE OF CALIFORNIA, DIVISION OF HIGHWAYS, 128 SOUTH SPRING STREET.

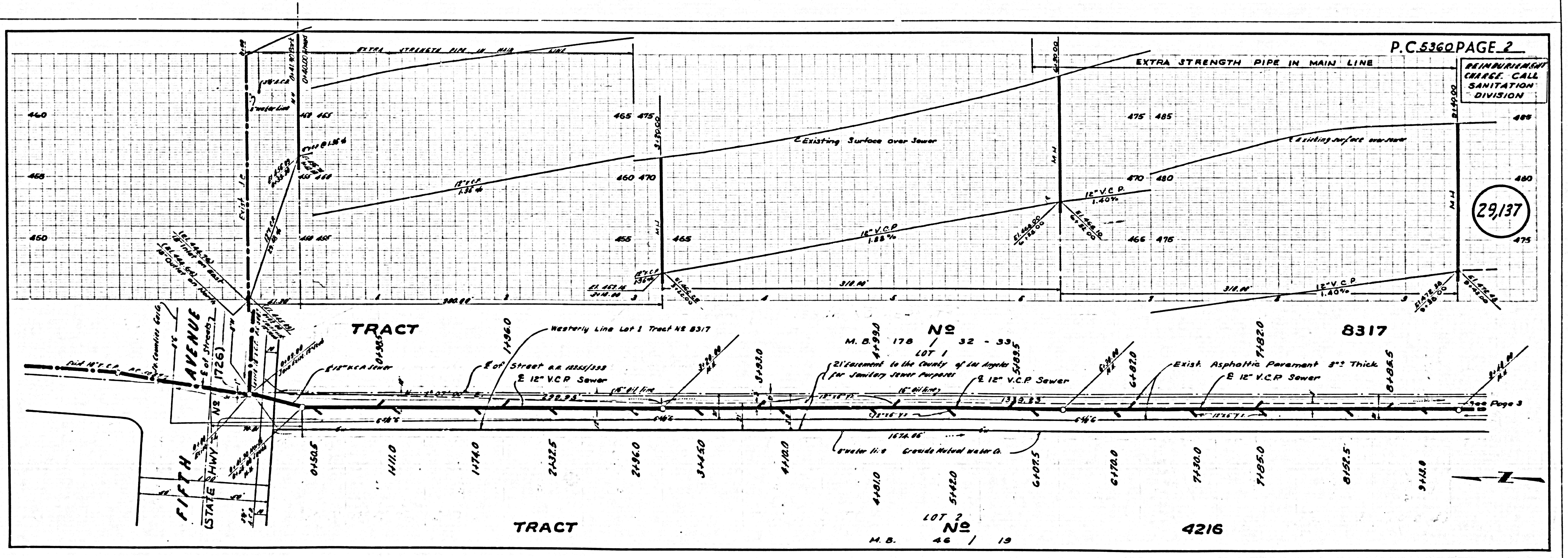
COUNTY OF LOS ANGELES, CALIFORNIA

APPROVED: JOHN A. LAMBIE, COUNTY ENGINEER APPROVED: *E.E. COMPTON*, CHIEF ENGINEER
 CO. SAN. DIST. NO. 21

BY: *E.E. Compton* ASST. SANITATION ENGINEER BY: *E. Compton* OFFICE ENGINEER

CHECKED BY: *W.C. Poindexter* OFFICE OF COUNTY ENGINEER, REG. C. E. NO. 946

SUBMITTED: *W.C. Poindexter* SAN DIMAS REGIONAL ENGINEER



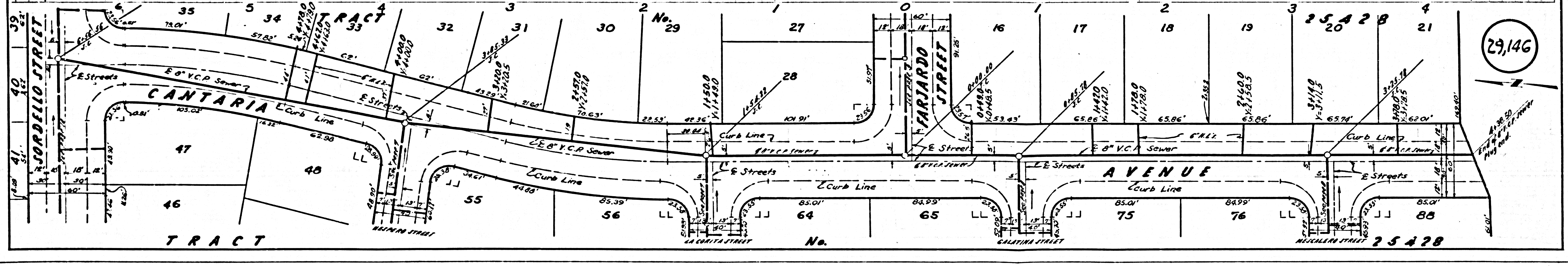
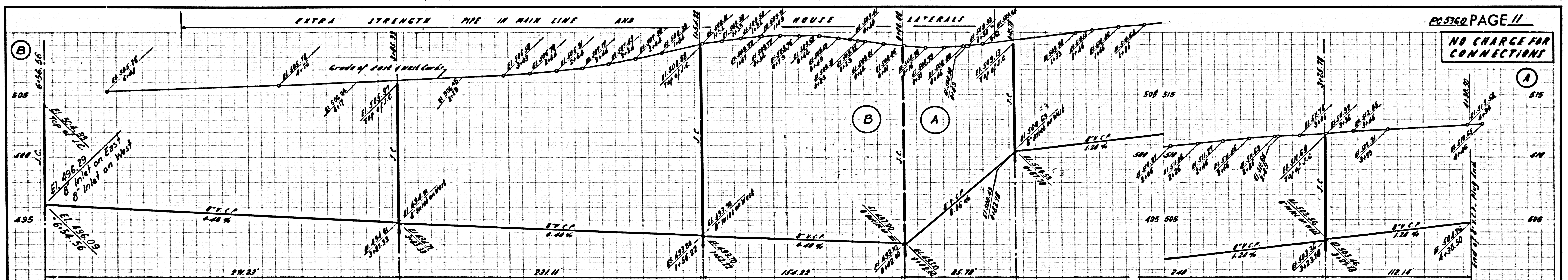
P.C. 5360 PAGE 2

BEINBURGH
 CHARGE CALL
 SANITATION
 DIVISION

29,137

See Page 3

NO CHARGE FOR CONNECTIONS



29,146

SEE SHEET FOR FULL SCALE PLAN