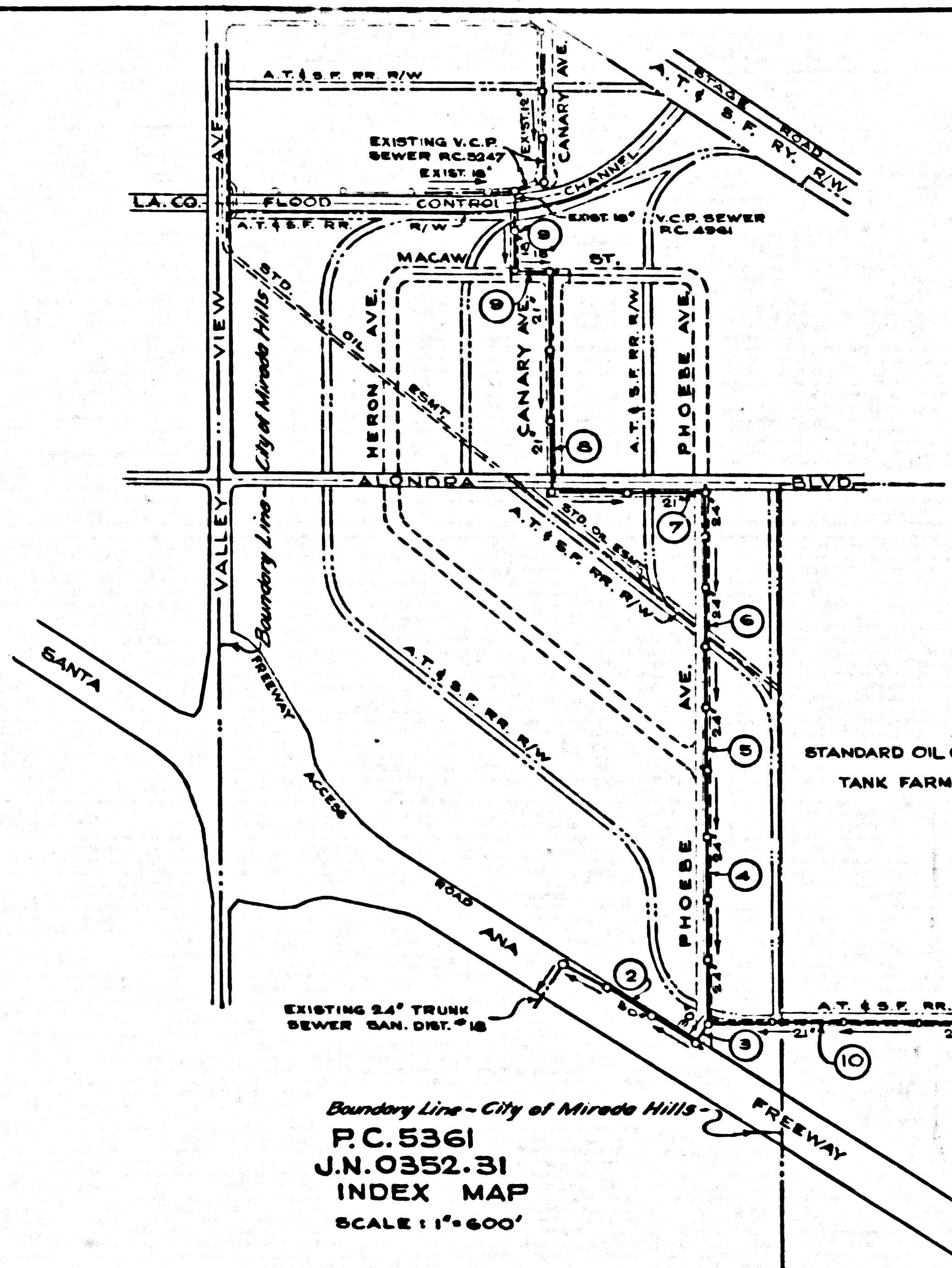


BENCH MARK:
STANDARD U.S.G.S. DISK STAMPED "62-1914 6513"
LOCATED ON WEST SIDE OF NORTH
CONCRETE HEADWALL ON NORTH SIDE
SOUTHERN PACIFIC RR. R/W 20' EAST OF
OF VALLEY VIEW AVENUE. **ELEV. 60.431**



MIRADA HILLS BLDG. DIST. NO. 408
NORWALK BLDG. DIST. NO. 4.2

- NOTES:**
1. PROVIDE STAKES ON THE PROPERTY LINE OR PROPERTY LINES PRODUCED AT RIGHT ANGLES TO THE SEWER LINE AT THE CENTER LINE OF EACH MANHOLE.
 2. NO REPRESENTATIVE OF THE COUNTY ENGINEER WILL SURVEY OR LAY OUT ANY PORTION OF THE WORK.
 3. THE OWNER OR HIS AUTHORIZED REPRESENTATIVE SHALL FURNISH THE COUNTY ENGINEER WITH GRADE SHEETS AND STATIONING FOR ALL HOUSE LATERALS AND T BRANCHES AND SHALL PROVIDE STAKES FOR THEM AT THEIR PROPER LOCATIONS WITH STATIONING PLAINLY MARKED. ANY CHANGE IN LOCATION SHALL BE REQUESTED IN WRITING BY THE OWNER OR HIS AUTHORIZED REPRESENTATIVE.
 4. THE PRIVATE ENGINEER SHALL FURNISH THE HOUSE LATERAL DEPTH AT THE PROPERTY LINE BELOW THE TOP OF CURB ELEVATION FOR EACH HOUSE LATERAL ON THE GRADE SHEET.
 5. NO REVISIONS SHALL BE MADE IN THESE PLANS WITHOUT THE APPROVAL OF THE COUNTY ENGINEER.
 6. USE STANDARD MANHOLE FRAMES AND COVERS, 8-117.
 7. USE STANDARD STRENGTH PIPE EXCEPT AS NOTED.
 8. USE CEMENT MORTAR OR "WEDGE-LOCK" OR "SPEED-SEAL" FOR ALL V.C.P. JOINTS PER SPECS., SECT. 34 & 40.
 9. RESURFACE ALL TRACHS WITHIN PAVED AREA TO MEET L.A. COUNTY ROAD DEPT., OR CALIF. STATE HIGHWAY REQUIREMENTS IN ACCORDANCE WITH PERMITS.
 10. ENCASE FOUR FEET OF SEWER AT POINTS OF INTERFERENCE WITH POLES, CASE III, 8-172.
 11. HOUSE LATERALS TO BE CONSTRUCTED WITH MANHOLES AS PROGRADE LINE PER 8-140 W/ CURB GRABBER EXCEPT AS NOTED.
 12. ALL STRUCTURES SHALL BE BRICK SEWER STRUCTURES, 8-104.
 13. FOR ALLOWABLE LEAKAGE TEST USE FORMULA NO. 1, SPECS., SEC. 54.
 14. MANHOLE TOPS IN UNIMPROVED RIGHTS-OF-WAY TO BE SIX INCHES ABOVE FINISHED GRADE.
 15. THE CONTRACTOR SHALL NOTIFY THE DESIGN DIVISION BY TELEPHONE, MADISON 9-472, EXT. 42-267 AT LEAST TWENTY-FOUR HOURS BEFORE STARTING ANY WORK UNDER THIS CONTRACT.
 16. STANDARD SPECIFICATIONS DATED JAN. 1, 1960 APPLY IN THE CONSTRUCTION OF THIS PROJECT.

PROFILE ALIGNMENT AND GRADE OF **P.C. 5361**
SANITARY SEWERS PAGE 1
TO BE CONSTRUCTED IN **J.N. 0352.31**

R/W E/O VALLEY VIEW
AVE. N^o 2
PRIVATE CONTRACT NO. 5361
J.N. C352.31
W.S. 34

6 SHEETS; 11 PAGES

SCALE: VERT. 1" = 4' NOVEMBER, 1959
HORIZ. 1" = 40'

PREPARED BY THE OFFICES OF
CENTRAL MANUFACTURING DISTRICT

BY: *Arthur H. Cook*
REG. C. E. NO. 7767

FOR LEGEND SEE PLAN NO. S-A-64

29583

NOTE:
GRADES TO WHICH THIS IMPROVEMENT IS TO BE CONSTRUCTED ARE SHOWN ON PLANS AND PROFILE. GRADE POINTS FOR TOP OF CURBS, CENTER LINE OF STREETS, OR CENTER LINE OF ALLEYS ARE SHOWN BY CIRCLES ON PROFILES. ALL POINTS BETWEEN DESIGNATED POINTS THE GRADE SHALL BE ESTABLISHED SO AS TO CONFORM TO A STRAIGHT LINE DRAWN BETWEEN SAID DESIGNATED POINTS.
ELEVATIONS ARE IN FEET ABOVE U.S.C. & G.S. SEA LEVEL DATUM OF 1929.
THIS DRAWING AND THE DATA HEREON ARE HEREBY MADE A PART OF THE SPECIFICATIONS.
WORK SHALL BE CONSTRUCTED ACCORDING TO SPECIFICATIONS ON FILE IN THE OFFICE OF THE COUNTY ENGINEER AND SHALL BE PROSECUTED ONLY IN THE PRESENCE OF THE COUNTY ENGINEER.
BEFORE WORK CAN BE STARTED, THE CONTRACTOR MUST OBTAIN A PERMIT TO EXCAVATE IN COUNTY STREETS FROM THE L.A. COUNTY ROAD DEPT., DISTRICT OFFICE NO. 4, AND PAY A FEE. WITH THE COUNTY ENGINEER, ROOM 327 PARK AMBASSADOR BUILDING, 325 SO. BROADWAY SUFFICIENT TO COVER THE COST OF CONSTRUCTION INSPECTION AND RECORD PLANS.
APPROVAL OF THIS PLAN BY THE COUNTY OF LOS ANGELES DOES NOT CONSTITUTE A REPRESENTATION AS TO THE ACCURACY OF THE LOCATION OF OR THE EXISTENCE OR NON-EXISTENCE OF ANY UNDERGROUND UTILITY PIPE, OR STRUCTURE WITHIN THE LIMITS OF THIS PROJECT. THIS NOTE APPLIES TO ALL PAGES.
IF WORK IS TO BE DONE IN A STATE HIGHWAY, A PERMIT MUST BE OBTAINED FROM THE STATE OF CALIFORNIA, DIVISION OF HIGHWAYS, 120 SOUTH SPRING STREET.

COUNTY OF LOS ANGELES, CALIFORNIA
CITY OF MIRADA HILLS, CALIFORNIA
APPROVED, JOHN A. LAMBE, COUNTY ENGINEER
APPROVED, C. P. COMPTON, CHIEF ENGINEER

BY: *C. E. Compton* DIST. SANITATION ENGINEER
BY: *C. P. Compton* OFFICE ENGINEER

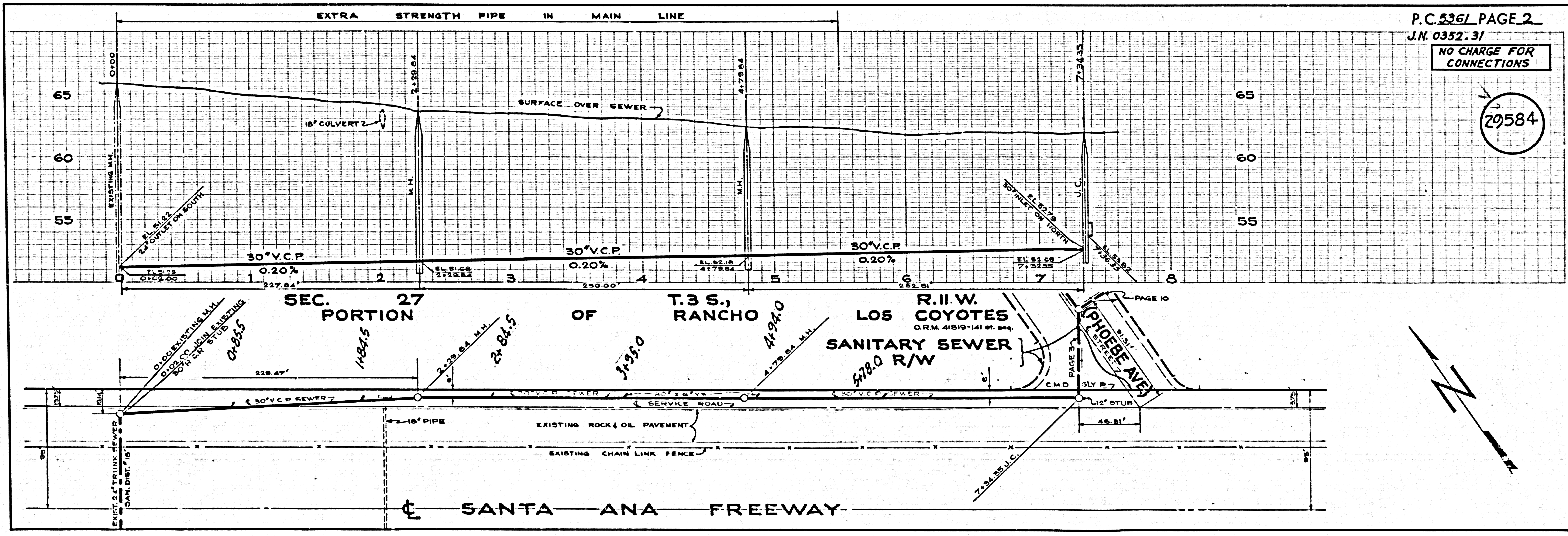
CHECKED BY: *W. L. Wilcox* 6-6-60
OFFICE OF COUNTY ENGINEER, REG. C. E. NO. 2406
CITY ENGINEER

SUBMITTED BY: *John L. Egan* 6-3-60
CORRIDOR REGIONAL ENGINEER REG. C. E. NO. 3871

**ISSUE NO PERMITS UNTIL
R/W IS CLEAR AND TRUNK
SEWER IS COMPLETED**

**NO CHARGE
FOR CONNECTIONS**
Chickland 8-20

Boundary Line - City of Mirada Hills -
P.C. 5361
J.N. 0352.31
INDEX MAP
SCALE: 1" = 600'



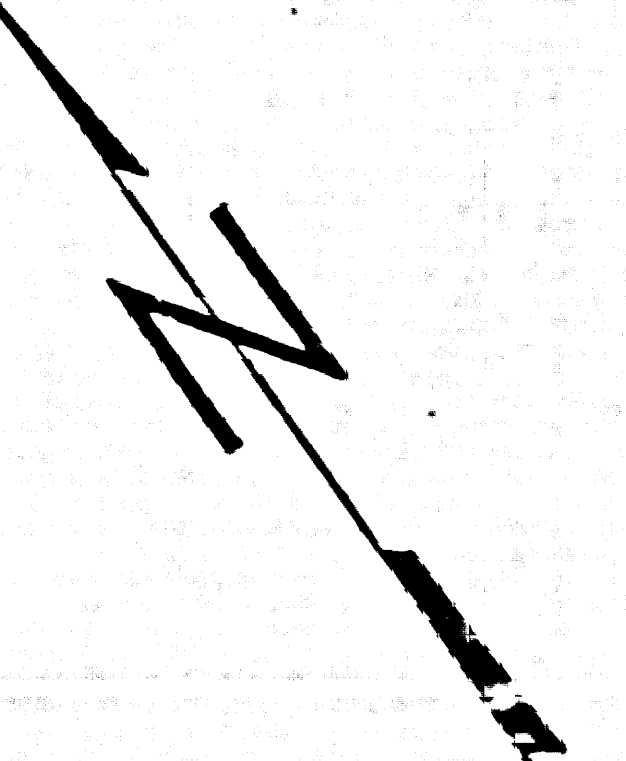
P.C. 5361 PAGE 2
J.N. 0352.31

NO CHARGE FOR CONNECTIONS

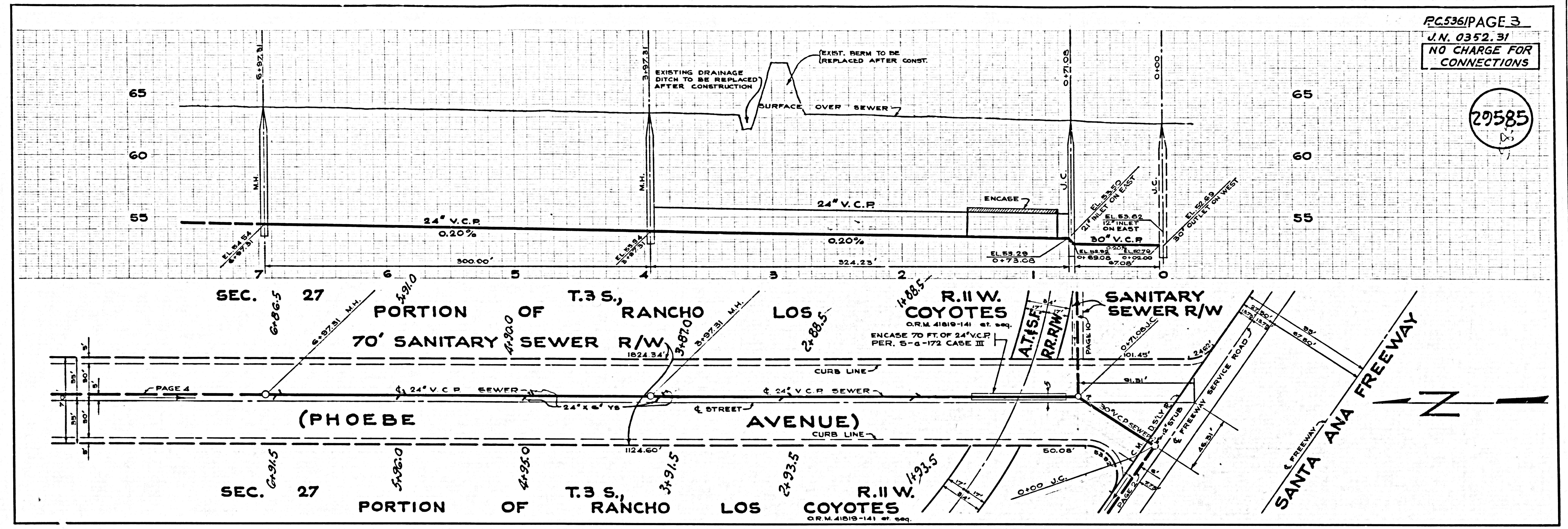
29584

T.3 S. RANCHO LOS COYOTES
O.R.M. 41819-141 et. seq.
SANITARY SEWER
578.0 R/W

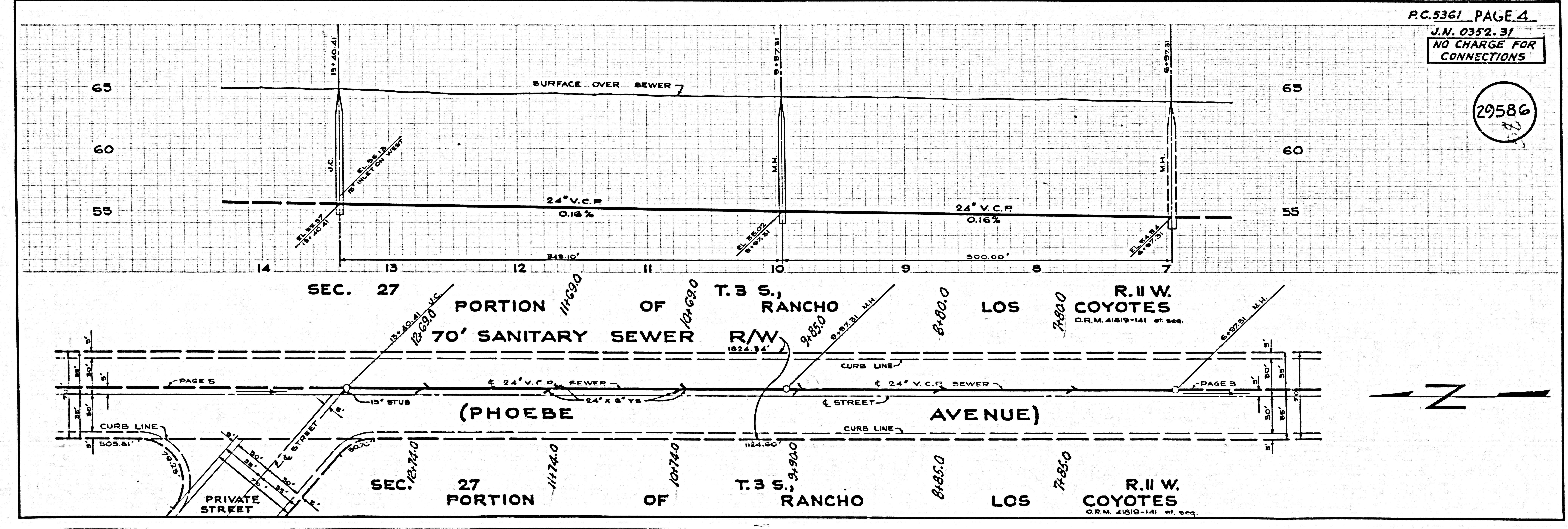
SANTA ANA FREEWAY

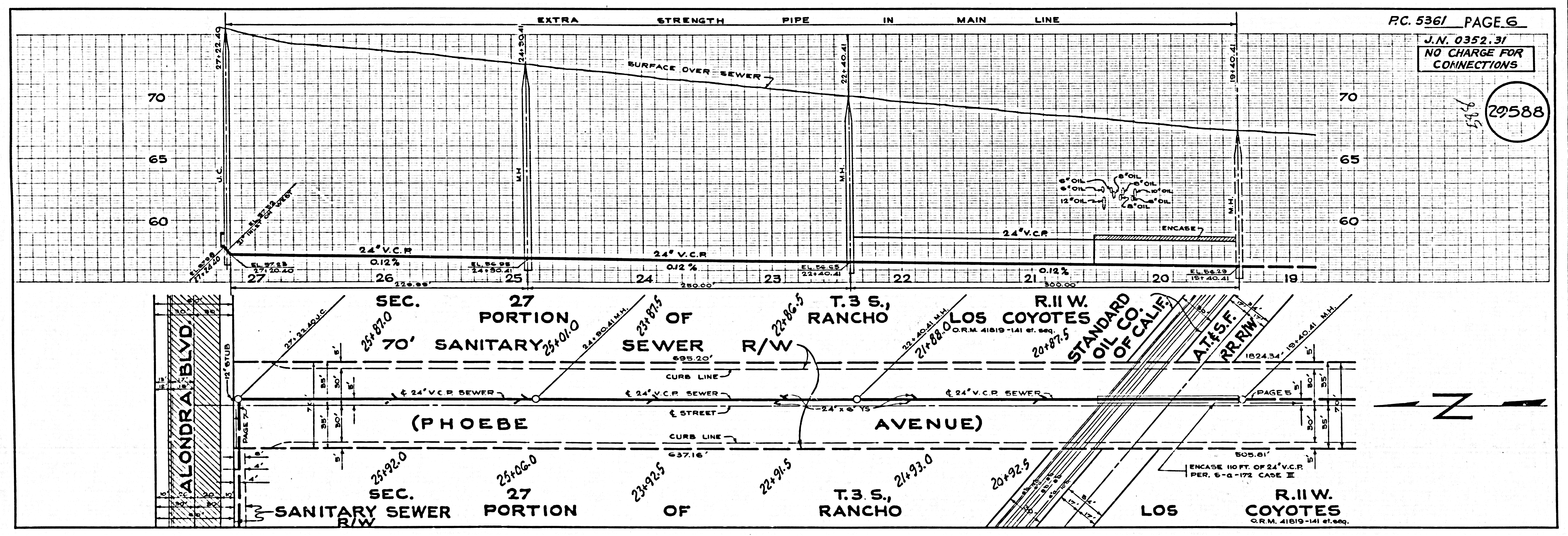
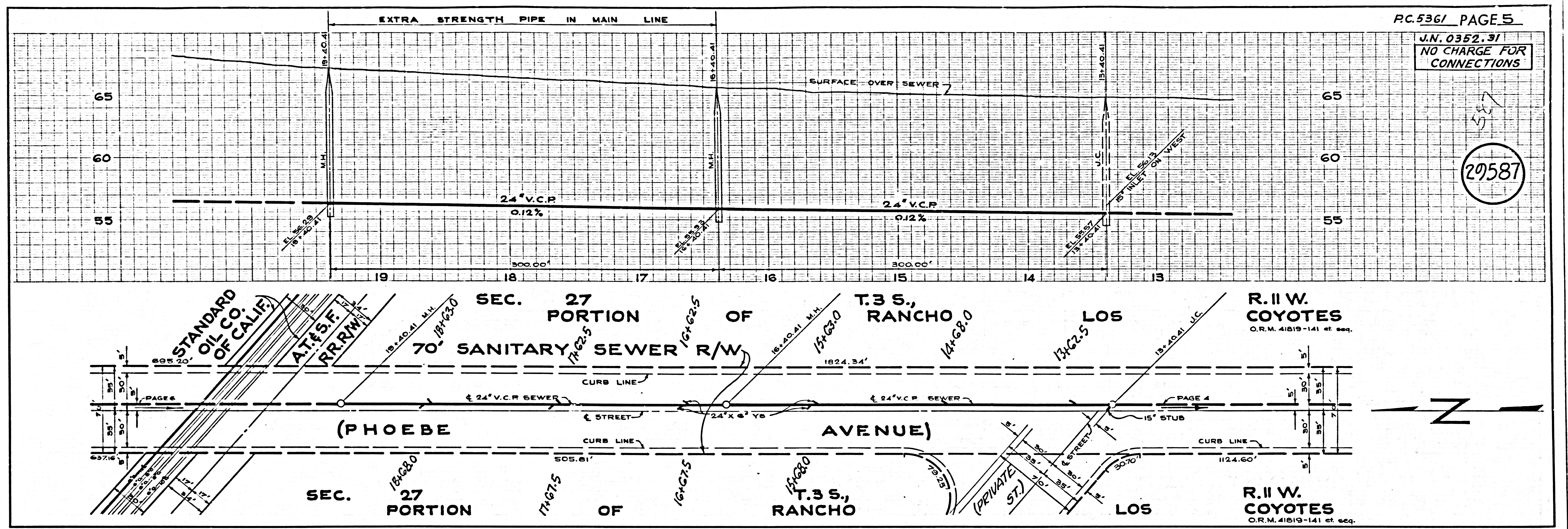


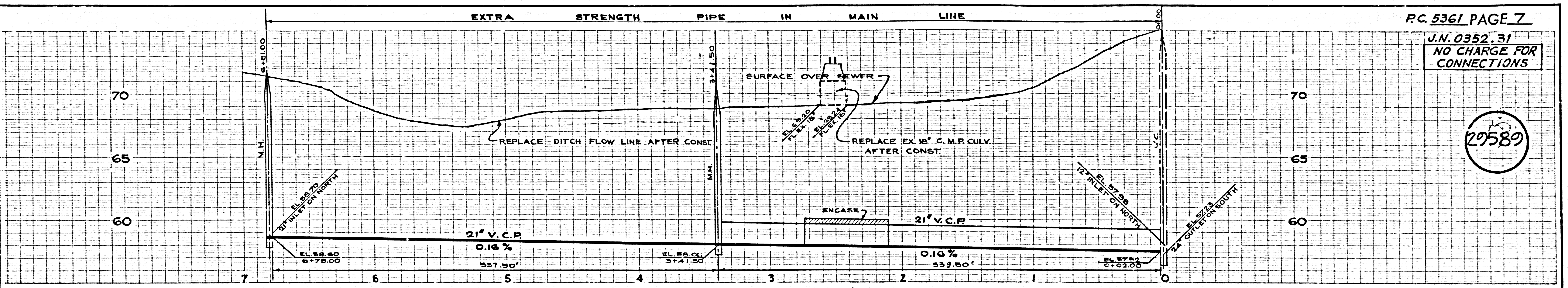
29585



29586

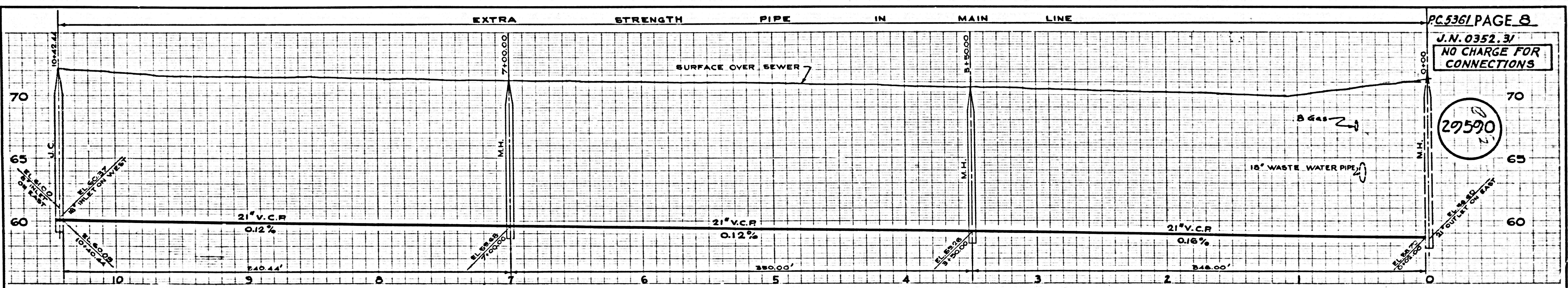
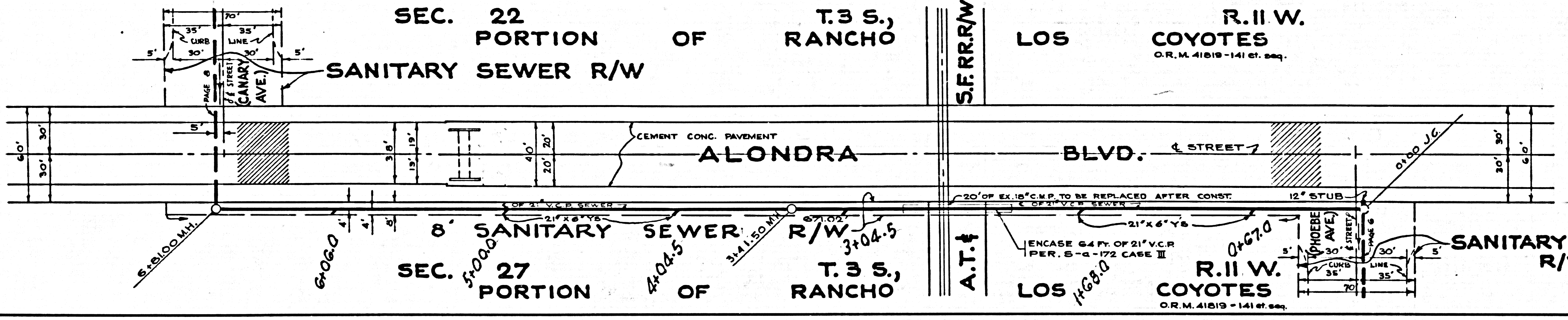






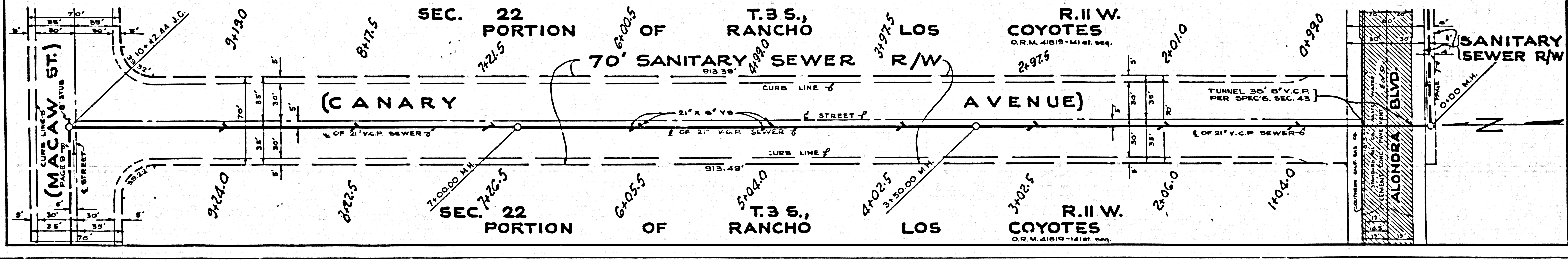
PC 5361 PAGE 7
 J.N. 0352.31
 NO CHARGE FOR CONNECTIONS

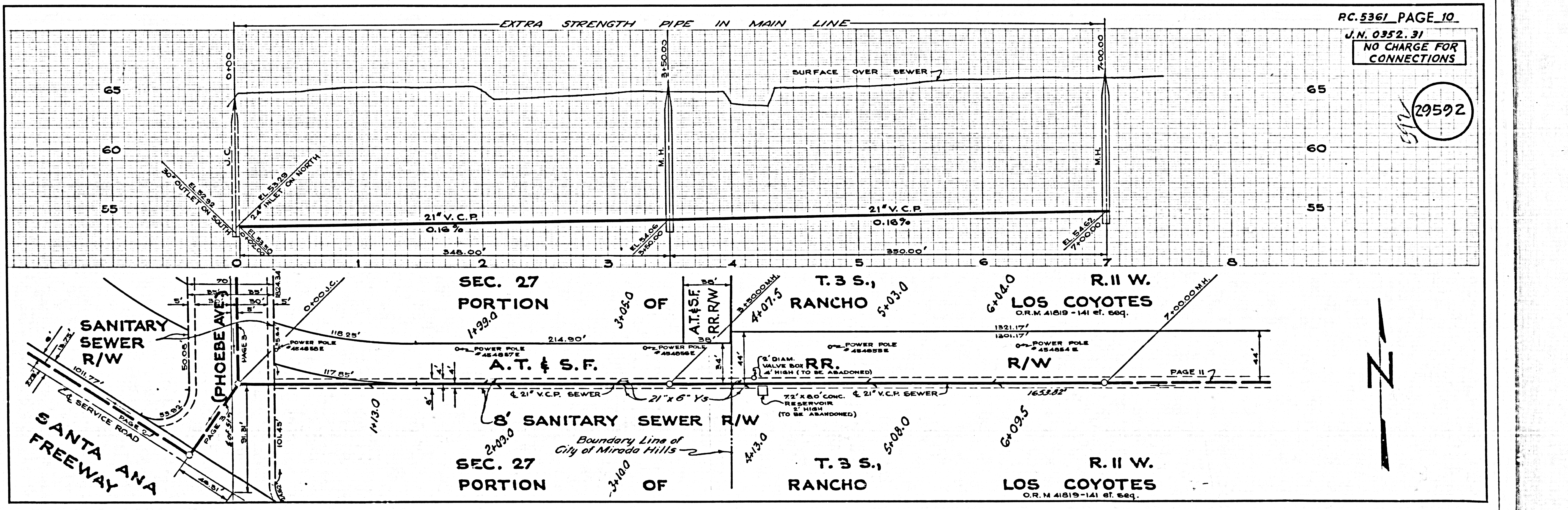
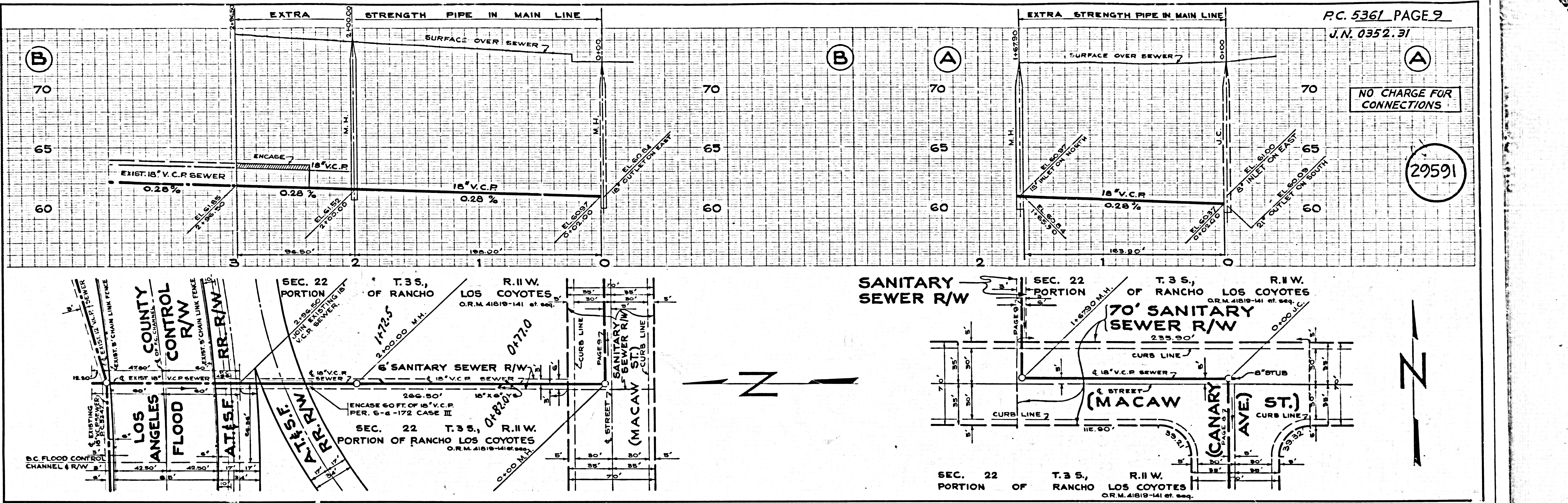
29589



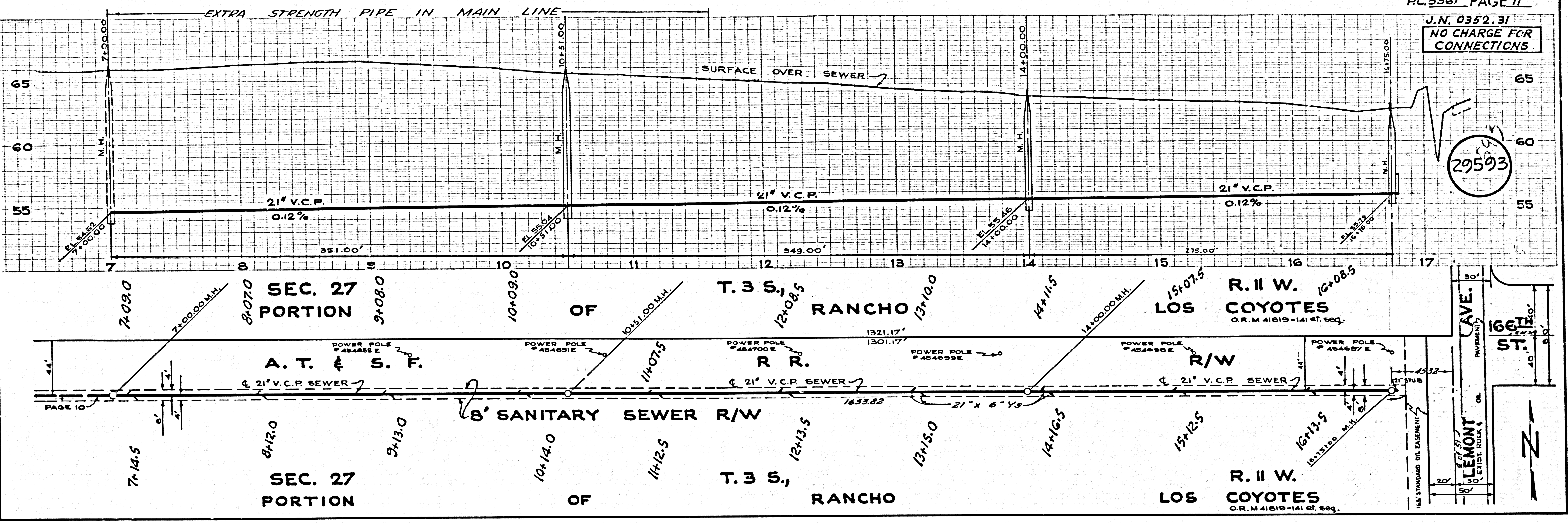
PC 5361 PAGE 8
 J.N. 0352.31
 NO CHARGE FOR CONNECTIONS

29590





J.N. 0352.31
NO CHARGE FOR CONNECTIONS



29593

U.S.G. 100 MG. GAL. BLUE PRINT SHEET NO. 2