

WHITTIER BLDG. DIST. NO. 11

PROFILE ALIGNMENT AND GRADE OF P.C. 5374
 SANITARY SEWERS PAGE 1
 TO BE CONSTRUCTED IN J.N. 0352.40

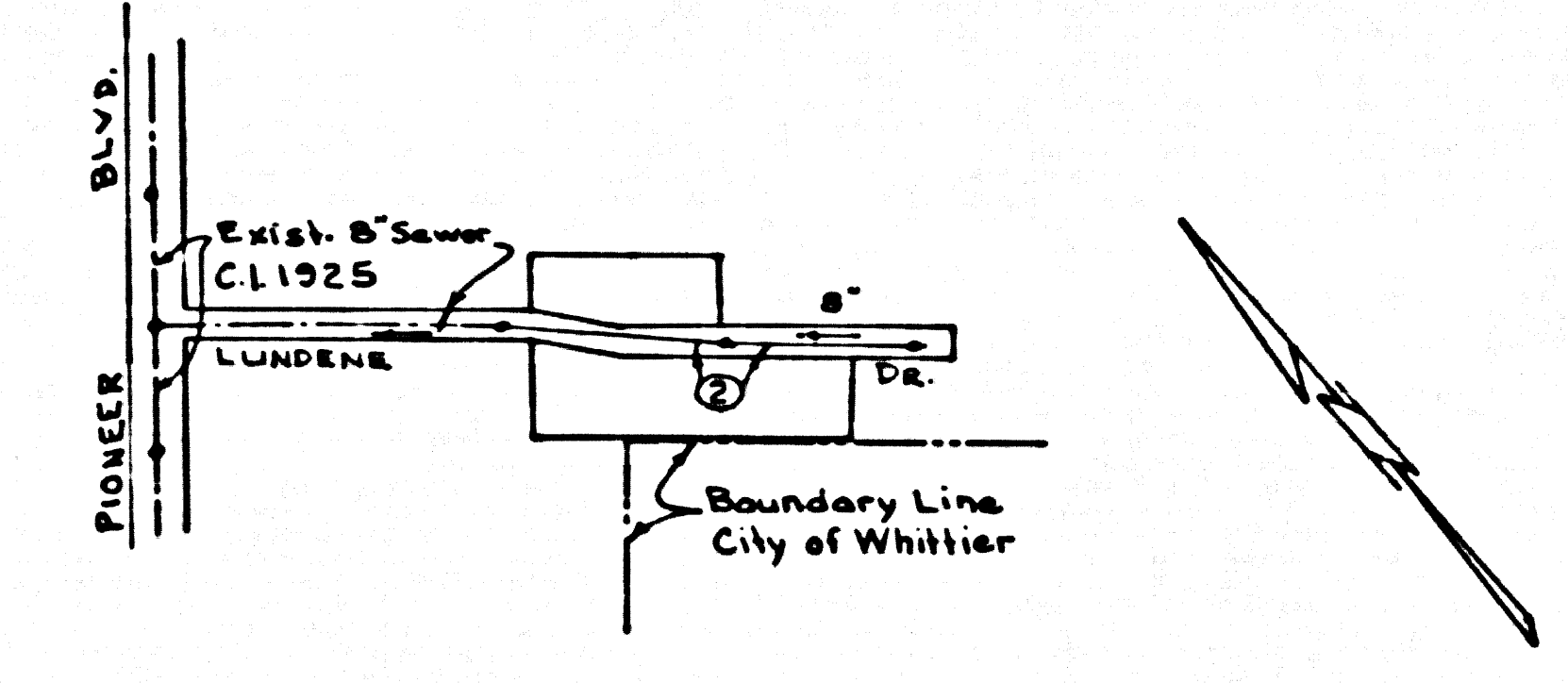
TRACT No 25225
 PRIVATE CONTRACT NO. 5374
 J.N. 0352.40
 W.S. 37

1 SHEET, 2 PAGES
 SCALE: VERT. 1"=4' DEC. 1959
 HORIZ. 1"=40'
 PREPARED IN THE OFFICES OF
OLSON SURVEYING SERVICE
 BY *James H. Olson*
 REG. C. E. NO. 6782
 FOR LEGEND SEE PLAN NO. S-A-64

29,098

B.M. 271233 Elev. 207.174 (1955)
 L. & B. Nail 2 1/2" E. of E. cb. rel. at SE corner
 Lundene Dr. & Pioneer Blvd.

- NOTES
- PROFILES SHOWN ON THE PROPERTY LINE OR PROPERTY LINES PRODUCED AT RIGHT ANGLES TO THE SEWER LINE AT THE CENTER LINE OF EACH MANHOLE.
 - NO REPRESENTATIVE OF THE COUNTY ENGINEER WILL SURVEY OR LAY OUT ANY PORTION OF THE WORK.
 - THE OWNER OR HIS AUTHORIZED REPRESENTATIVE SHALL FURNISH THE COUNTY ENGINEER WITH GRADE SHEETS AND STATIONING FOR ALL HOUSE LATERALS AND Y BRANCHES AND SHALL PROVIDE STAKES FOR THEM AT THEIR PROPER LOCATIONS WITH STATIONING PLAINLY MARKED. ANY CHANGE IN LOCATION SHALL BE REQUESTED IN WRITING BY THE OWNER OR HIS REPRESENTATIVE.
 - THE PRIVATE ENGINEER SHALL FURNISH THE HOUSE LATERAL DEPTH AT THE PROPERTY LINE BELOW THE TOP OF CURB ELEVATION FOR EACH HOUSE LATERAL ON THE GRADE SHEET.
 - NO REVISIONS SHALL BE MADE IN THESE PLANS WITHOUT THE APPROVAL OF THE COUNTY ENGINEER.
 - USE STANDARD MANHOLE FRAMES AND COVERS, S-117.
 - USE STANDARD STRENGTH PIPE.
 - USE CEMENT MORTAR OR "WEDGE-LOCK" OR "SPEED-SEAL" FOR ALL V.C.P. JOINTS PER SPECS. SECS. 36 & 46.
 - RESURFACE ALL TRENCH WITHIN PAVED AREA TO MEET L.A. COUNTY ROAD DEPT. OR CALIF. STATE HIGHWAY REQUIREMENTS IN ACCORDANCE WITH PERMITS.
 - ENCASE FOUR FEET OF SEWER AT POINTS OF INTERFERENCE WITH POLES, CASE "H", S-172.
 - HOUSE LATERALS TO BE CONSTRUCTED WITH INVERTS AT PROPERTY LINE 6 FEET BELOW CURB GRADE.
 - ALL STRUCTURES SHALL BE BRICK SEWER STRUCTURES, S-104.
 - FOR ALLOWABLE LEAKAGE TEST USE FORMULA, "NO. 1" SPEC. SEC. 64.
 - MANHOLE TOPS IN UNIMPROVED RIGHTS-OF-WAY TO BE 24 INCHES ABOVE FINISHED GRADE.
 - THE CONTRACTOR SHALL NOTIFY THE CONSTRUCTION & STORM DRAIN DIVISION BY TELEPHONE, MADISON 9-677, EXT. 362, AT LEAST TWENTY-FOUR HOURS BEFORE STARTING ANY WORK UNDER THIS CONTRACT.
 - STANDARD SPECIFICATIONS DATED JANUARY 1, 1950 APPLY IN THE CONSTRUCTION OF THIS PROJECT.

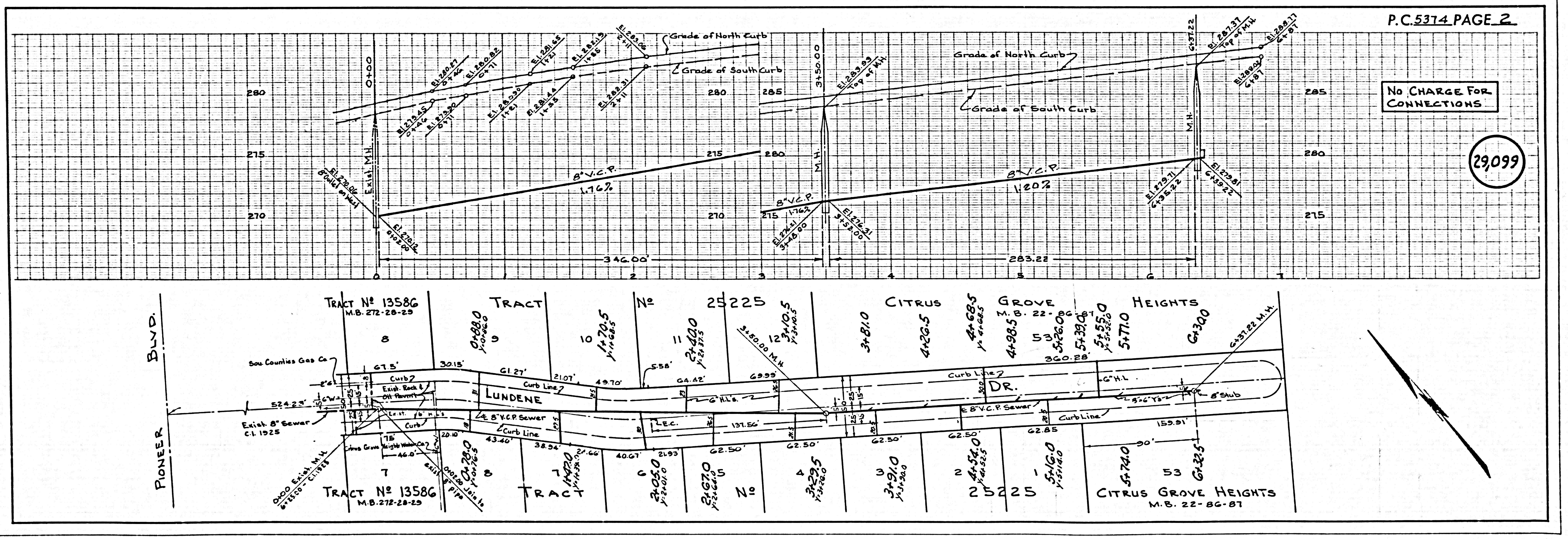


INDEX MAP
 Scale: 1"=400'
 TRACT No 25225
 P.C. 5374
 J.N. 0352.40

No CHARGE
 FOR CONNECTIONS
Richard J. Olson

NOTE:
 GRADES TO WHICH THIS IMPROVEMENT IS TO BE CONSTRUCTED ARE SHOWN ON PLANS AND PROFILES. GRADE POINTS FOR TOP OF CURB, CENTER LINE OF STREETS, OR CENTER LINE OF ALLEYS ARE SHOWN BY CIRCLES ON PROFILES. AT ALL POINTS BETWEEN DESIGNATED POINTS THE GRADE SHALL BE ESTABLISHED SO AS TO CONFORM TO A STRAIGHT LINE DRAWN BETWEEN SAID DESIGNATED POINTS.
 ELEVATIONS ARE IN FEET ABOVE U.S.C. & G.S. SEA LEVEL DATUM ON 1929.
 THIS DRAWING AND THE DATA HEREON ARE HEREBY MADE A PART OF THE SPECIFICATIONS.
 WORK SHALL BE CONSTRUCTED ACCORDING TO SPECIFICATIONS ON FILE IN THE OFFICE OF THE COUNTY ENGINEER AND SHALL BE PROSECUTED ONLY IN THE PRESENCE OF THE COUNTY ENGINEER.
 BEFORE WORK CAN BE STARTED, THE CONTRACTOR MUST OBTAIN A PERMIT TO EXCAVATE IN COUNTY STREETS FROM THE L.A. COUNTY ROAD DEPT., DISTRICT OFFICE NO. 9, AND PAY A FEE TO THE COUNTY ENGINEER, ROOM 224-PAN AMERICAN BUILDING, 335 SO. BROADWAY SUFFICIENT TO COVER THE COST OF CONSTRUCTION INSPECTION AND RECORD PLANS.
 APPROVAL OF THIS PLAN BY THE COUNTY OF LOS ANGELES DOES NOT CONSTITUTE A REPRESENTATION AS TO THE ACCURACY OF THE LOCATION OR OF THE EXISTENCE OR NON-EXISTENCE OF ANY UNDERGROUND UTILITY PIPE, OR STRUCTURE WITHIN THE LIMITS OF THIS PROJECT. THIS NOTE APPLIES TO ALL PAGES.
 IF WORK IS TO BE DONE IN A STATE HIGHWAY, A PERMIT MUST BE OBTAINED FROM THE STATE OF CALIFORNIA, DIVISION OF HIGHWAYS, 130 SOUTH SPRING STREET.

COUNTY OF LOS ANGELES, CALIFORNIA
 APPROVED, JOHN A. LAMBE, COUNTY ENGINEER
 APPROVED, C. R. COMPTON, CHIEF ENGINEER
 CO. SAN. DIST. NO. 18
 BY *C. E. Priddy* BY *J. H. Sturman*
 451 1/2 SANITATION ENGINEER OFFICE ENGINEER
 CHECKED BY *St. Oude* 3-10-60
 OFFICE OF COUNTY ENGINEER, REG. C. E. NO. 9486
 Submitted By *John L. Eaton* 3-9-60
 Los Carritos Regional Engineer, Reg. C. E. No. 3871



No CHARGE
 FOR CONNECTIONS
 29,099

P.C. 5374 PAGE 2