

LOMITA BLDG. DIST. NO. 71

PROFILE ALIGNMENT AND GRADE OF P.C. 5381  
 SANITARY SEWERS PAGE 1  
 TO BE CONSTRUCTED IN J.N. 0352.46  
 TRACT No 25151

PRIVATE CONTRACT NO. 5381

W.S. 28  
 1 SHEET, 2 PAGES

SCALE: VERT. 1"=4'  
 HORIZ. 1"=40' NOV. 1959

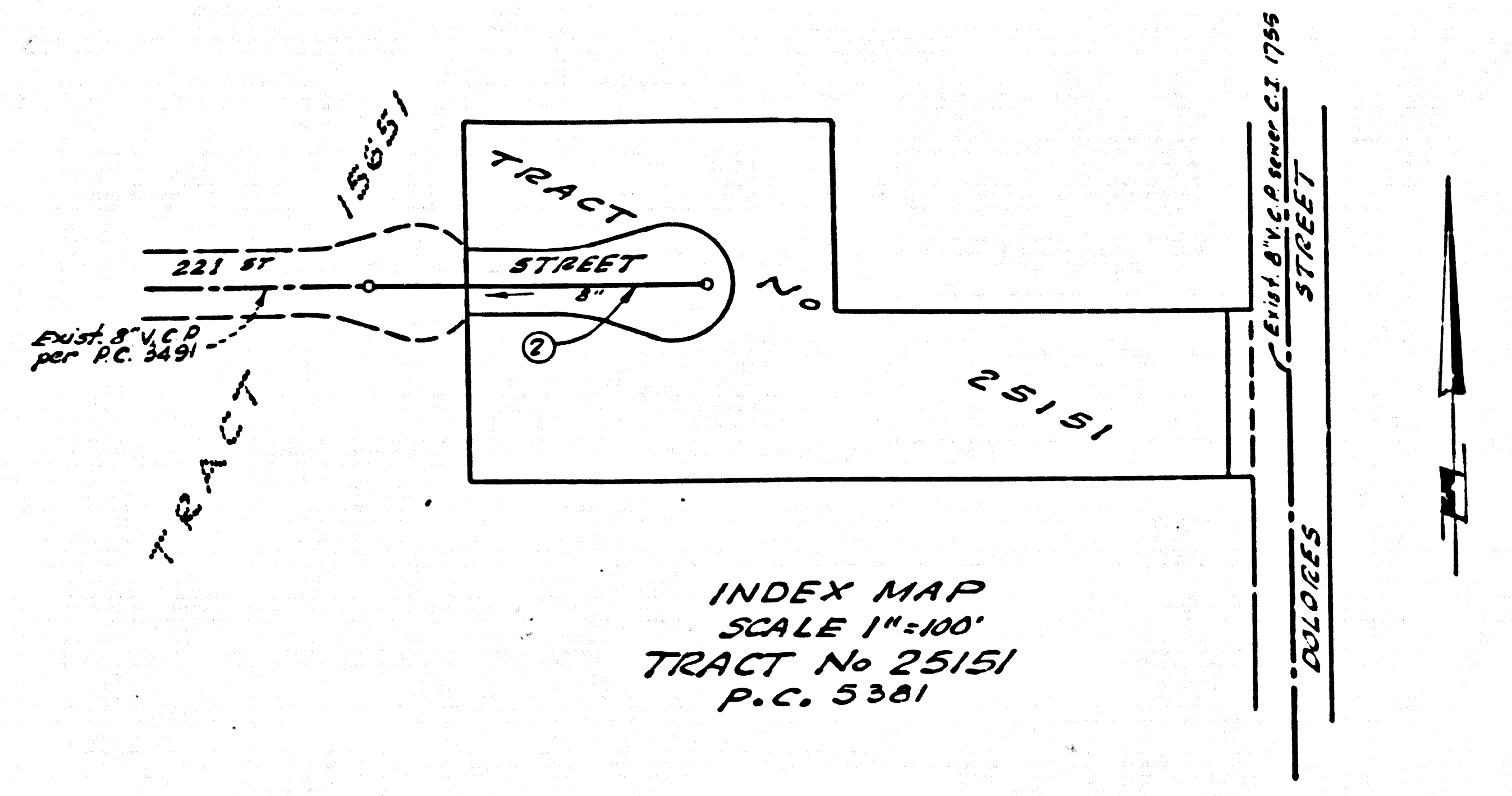
PREPARED IN THE OFFICES OF  
 BARCLAY-PEARSON CO., INC.

29037

BY Edward L. Pearson  
 REG. C. E. NO. 3783

FOR LEGEND SEE PLAN NO. S-A-64

- NOTES
1. PROVIDE STAKES ON THE PROPERTY LINE OR PROPERTY LINES PRODUCED AT RIGHT ANGLES TO THE SEWER LINE AT THE CENTER LINE OF EACH MANHOLE.
  2. NO REPRESENTATIVE OF THE COUNTY ENGINEER WILL SURVEY OR LAYOUT ANY PORTION OF THE WORK.
  3. THE OWNER OR HIS AUTHORIZED REPRESENTATIVE SHALL FURNISH THE COUNTY ENGINEER WITH GRADE SHEETS AND STATIONING FOR ALL HOUSE LATERALS AND Y BRANCHES AND SHALL PROVIDE STAKES FOR THEM AT THEIR PROPER LOCATIONS WITH STATIONING PLAINLY MARKED. ANY CHANGE IN LOCATION SHALL BE REQUESTED IN WRITING BY THE OWNER OR HIS REPRESENTATIVE.
  4. NO REVISIONS SHALL BE MADE IN THESE PLANS WITHOUT THE APPROVAL OF THE COUNTY ENGINEER.
  5. USE STANDARD MANHOLE FRAMES AND COVERS, S-A-117, EXCEPT AS NOTED.
  6. USE STANDARD STRENGTH PIPE EXCEPT AS NOTED.
  7. USE CEMENT MORTAR OR "WEDGE LOCK" OR "SPEED SEAL" FOR ALL V.C.P. JOINTS PER S.P.C. SECS 30 & 38.
  8. RESURFACE ALL TRENCH WIDTH PAVED AREA TO MEET L. A. COUNTY ROAD DEPT., OR CALIF. STATE HIGHWAY DEPT. REQUIREMENTS IN ACCORDANCE WITH PERMITS.
  9. SPACES FOUR FEET OF SEWER AT POINTS OF INTERFERENCE WITH POLES, E.G. 172 CASE III.
  10. HOUSE LATERALS TO BE CONSTRUCTED WITH INVERTS AT PROPERTY LINE 6" BELOW CURB GRADE EXCEPT AS NOTED.
  11. ALL STRUCTURES SHALL BE BRICK SEWER STRUCTURES, S-A-104, EXCEPT AS NOTED.
  12. FOR ALLOWABLE LEAKAGE TEST USE FORMULA NO. \_\_\_\_\_ S.P.C., SEC. 51.
  13. MANHOLE TOPS IN UNIMPROVED RIGHTS-OF-WAY TO BE 6" ABOVE FINISHED GRADE.
  14. Standard specifications dated Jan 1, 1960 apply in the construction of this project.
  15. All the locations shown for existing substructures have been taken from records and their correctness and completeness are not guaranteed. It shall be the contractor's responsibility alone to definitely locate all underground lines of every nature whether shown hereon or not, and protect them from damage. The contractor shall bear the full expense of repair to any life damaged by any operation in connection with the prosecution of this work.
  16. The contractor shall notify the construction & Storm Drain Division by telephone MA 9-4747 Ext. 362, at least 24 hours before starting any work under this contract.



NO CHARGE FOR CONNECTIONS  
 Arthur B. Ready

BENCH MARK  
 S.Y. 4084 Elev. 34.879  
 Spike in lead 5' south of curb  
 Return S.E. Corner of Dolores  
 Street and 221 St.

NOTE: GRADES TO WHICH THIS IMPROVEMENT IS TO BE CONSTRUCTED ARE SHOWN ON PLANS AND PROFILES. GRADE POINTS FOR TOP OF CURBS, CENTER LINE OF STREETS, OR CENTER LINE OF ALLEYS ARE SHOWN BY CIRCLES ON PROFILES. AT ALL POINTS BETWEEN DESIGNATED POINTS THE GRADE SHALL BE ESTABLISHED SO AS TO CONFORM TO A STRAIGHT LINE DRAWN BETWEEN SAID DESIGNATED POINTS. ELEVATIONS ARE IN FEET ABOVE U.S.C.S. DATUM OR MEAN SEA LEVEL. THIS DRAWING AND THE DATA HEREON ARE HEREBY MADE A PART OF THE SPECIFICATIONS. WORK SHALL BE CONSTRUCTED ACCORDING TO SPECIFICATIONS ON FILE IN THE OFFICE OF THE COUNTY ENGINEER AND SHALL BE PROSECUTED ONLY IN THE PRESENCE OF THE COUNTY ENGINEER. BEFORE WORK CAN BE STARTED, THE CONTRACTOR MUST OBTAIN A PERMIT TO EXCAVATE IN COUNTY STREETS FROM THE L. A. COUNTY ROAD DEPT., DIST. OFF. 3 AND PAY A FEE TO THE COUNTY ENGINEER, ROOM 134 PAN AMERICAN BUILDING, 233 SO. BROADWAY SUFFICIENT TO COVER THE COST OF CONSTRUCTION INSPECTION AND RECORD PLANS. APPROVAL OF THIS PLAN BY THE COUNTY OF LOS ANGELES DOES NOT CONSTITUTE A REPRESENTATION AS TO THE ACCURACY OF THE LOCATION OF OR THE EXISTENCE OR NON-EXISTENCE OF ANY UNDERGROUND UTILITY PIPE, OR STRUCTURE WITHIN THE LIMITS OF THIS PROJECT. THIS NOTE APPLIES TO ALL PAGES. IF WORK IS TO BE DONE IN A STATE HIGHWAY, A PERMIT MUST BE OBTAINED FROM THE STATE OF CALIFORNIA, DIVISION OF HIGHWAYS, 120 SOUTH SPRING STREET.

COUNTY OF LOS ANGELES, CALIFORNIA

APPROVED, JOHN A. LAMBE, COUNTY ENGINEER

APPROVED, C.E. COMPTON, CHIEF ENGINEER

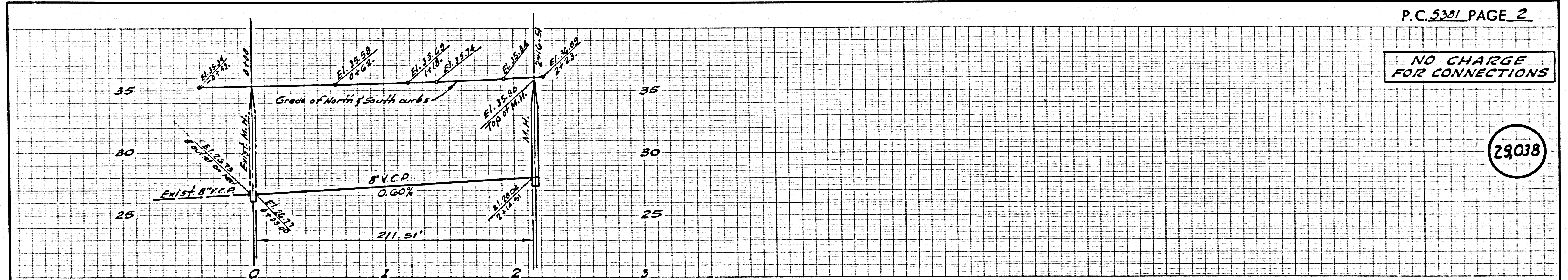
BY E.E. Pearson, ASST. SANITATION ENGINEER

BY J.P. Williams, OFFICE ENGINEER

CHECKED BY R.K. Wade, S-S-1-60

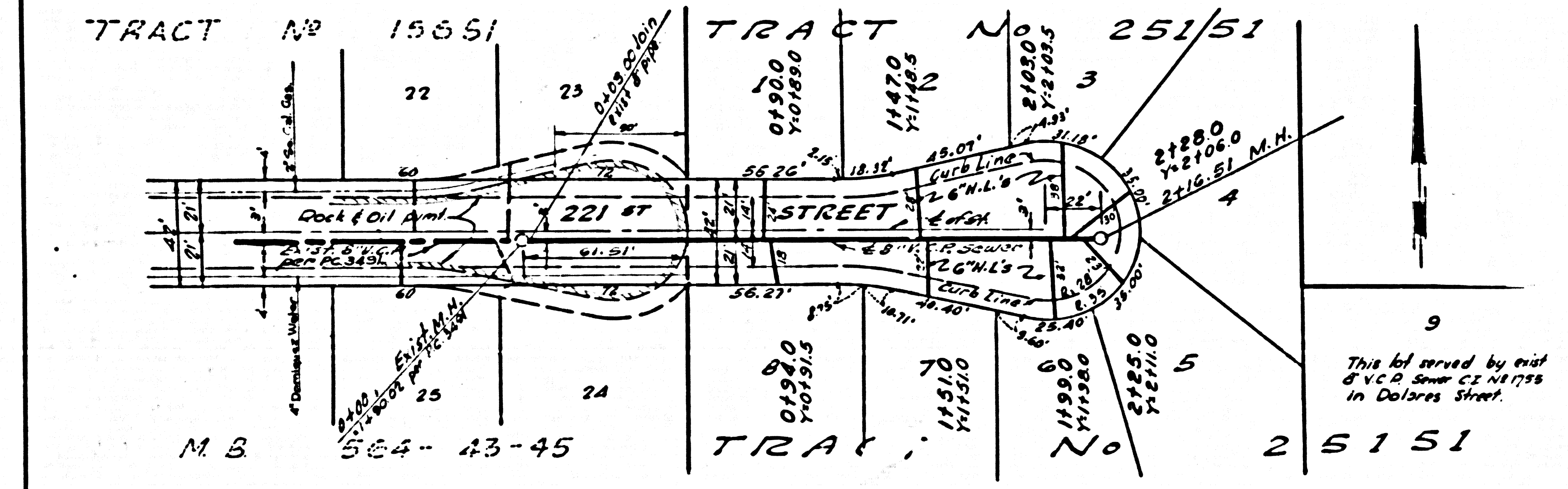
OFFICE OF COUNTY ENGINEER, REG. C. E. NO. 2436

SUBMITTED BY: Jack C. Lansing, Parks, Verdes, Castaneda Valley Regional Engineer



NO CHARGE FOR CONNECTIONS

29038



9  
 This lot served by exist  
 8" V.C.P. sewer line in  
 Dolores Street.