

PUENTE BLDG. DIST. NO. 2

PROFILE ALIGNMENT AND GRADE OF **P.C. 5382**
SANITARY SEWERS PAGE **1**
 TO BE CONSTRUCTED IN **J.N. 0352.47**

TRACT NO. 25386
PRIVATE CONTRACT NO. 5382

W.S. 38
 2 SHEETS; 3 PAGES

SCALE: VERT. 1" = 4' EXCEPT 2" = 4' HORIZ. 1" = 40'

PREPARED IN THE OFFICES OF

KEMMERER ENGINEERING CO., INC.

By: **Robert R. Flores**
 REG. C. E. NO. 1349

FOR LEGEND SEE PLAN NO. S-A-64

31477

- NOTES:**
1. PROVIDE STAKES ON THE PROPERTY LINE OR PROPERTY LINES PRODUCED AT RIGHT ANGLES TO THE SEWER LINE AT THE CENTER LINE OF EACH MANHOLE.
 2. NO REPRESENTATIVE OF THE COUNTY ENGINEER WILL SURVEY OR LAY OUT ANY PORTION OF THE WORK.
 3. THE OWNER OR HIS AUTHORIZED REPRESENTATIVE SHALL FURNISH THE COUNTY ENGINEER WITH GRADE SHEETS AND STATIONING FOR ALL HOUSE LATERALS AND Y BRANCHES AND SHALL PROVIDE STAKES FOR THEM AT THEIR PROPER LOCATIONS WITH STATIONING PLAINLY MARKED. ANY CHANGE IN LOCATION SHALL BE REQUESTED IN WRITING BY THE OWNER OR HIS REPRESENTATIVE.
 4. THE PRIVATE ENGINEER SHALL FURNISH THE HOUSE LATERAL DEPTH AT THE PROPERTY LINE BELOW THE TOP OF CURB ELEVATION FOR EACH HOUSE LATERAL ON THE GRADE SHEET.
 5. NO REVISIONS SHALL BE MADE IN THESE PLANS WITHOUT THE APPROVAL OF THE COUNTY ENGINEER.
 6. USE STANDARD MANHOLE FRAMES AND COVERS, S-117.
 7. USE STANDARD STRENGTH PIPE EXCEPT AS NOTED.
 8. USE CEMENT MORTAR OR "WEDGE-LOC" OR "SPEED-SEAL" FOR ALL V.C.P. JOINTS PER SPECS. SECS. 16 & 41.
 9. RESURFACE ALL TRENCH WITHIN PAVED AREA TO MEET L.A. COUNTY ROAD DEPT. OR CALIF. STATE HIGHWAY REQUIREMENTS IN ACCORDANCE WITH PERMITS.
 10. ENCASE FOUR FEET OF SEWER AT POINTS OF INTERFERENCE WITH POLES, CASE NO. S-112.
 11. HOUSE LATERALS TO BE CONSTRUCTED WITH INVERTS AT PROPERTY LINE 6 FEET BELOW CURB GRADE.
 12. ALL STRUCTURES SHALL BE BRICK SEWER STRUCTURES, S-104.
 13. FOR ALLOWABLE LEAKAGE TEST USE FORMULA NO. 1, SPECS. SEC. 54.
 14. MANHOLE TOPS IN UNIMPROVED RIGHTS-OF-WAY TO BE SIX INCHES ABOVE FINISHED GRADE.
 15. THE CONTRACTOR SHALL NOTIFY THE CONSTRUCTION DIVISION BY TELEPHONE, MADISON 3-471, EXT. 81504, AT LEAST TWENTY-FOUR HOURS BEFORE STARTING ANY WORK UNDER THIS CONTRACT.
 16. STANDARD SPECIFICATION DATED OCTO. 1960 APPLY IN THE CONSTRUCTION OF THIS PROJECT.

NO CONNECTIONS FOR THE DISPOSAL OF INDUSTRIAL WASTES SHALL BE MADE TO SEWERS SHOWN ON THESE DRAWINGS WITHOUT WRITTEN PERMISSION FROM THE CHIEF ENGINEER AND GENERAL MANAGER OF THE COUNTY SANITATION DISTRICT.

NO CHARGE FOR CONNECTIONS
 7/27/61 *W.C. Reinhardt* 1-9-61

NOTE: DO NOT ISSUE HOUSE CONNECTION PERMITS UNTIL OUTLET SEWER IS CONSTRUCTED AND TRACT NO. 25386 IS RECORDED.

NOTE:
 GRADES TO WHICH THIS IMPROVEMENT IS TO BE CONSTRUCTED ARE SHOWN ON PLANS AND PROFILES. GRADE POINTS FOR TOP OF CURBS, CENTER LINE OF STREETS, OR CENTER LINE OF ALLEYS ARE SHOWN BY CIRCLES ON PROFILES. AT ALL POINTS BETWEEN DESIGNATED POINTS THE GRADE SHALL BE ESTABLISHED SO AS TO CONFORM TO A STRAIGHT LINE DRAWN BETWEEN SAID DESIGNATED POINTS.
 ELEVATIONS ARE IN FEET ABOVE U.S.C. & G.S. SEA LEVEL DATUM OF 1929.
 THIS DRAWING AND THE DATA HEREON ARE HEREBY MADE A PART OF THE SPECIFICATIONS.
 WORK SHALL BE CONSTRUCTED ACCORDING TO SPECIFICATIONS ON FILE IN THE OFFICE OF THE COUNTY ENGINEER AND SHALL BE PROSECUTED ONLY IN THE PRESENCE OF THE COUNTY ENGINEER.
 BEFORE WORK CAN BE STARTED THE CONTRACTOR MUST OBTAIN A PERMIT TO EXCAVATE IN COUNTY STREETS FROM THE L.A. COUNTY ROAD DEPT. DISTRICT OFFICE NO. 1 AND PAY THE COUNTY ENGINEER ROOM 224 FARM ANTELOPE BUILDING, 251 SO. BROADWAY SUFFICIENT TO COVER THE COST OF CONSTRUCTION INSPECTION AND RECORD PLANS.
 APPROVAL OF THIS PLAN BY THE COUNTY OF LOS ANGELES DOES NOT CONSTITUTE A REPRESENTATION AS TO THE ACCURACY OF THE LOCATION OF OR THE EXISTENCE OR NON-EXISTENCE OF ANY UNDERGROUND UTILITY PIPE, OR STRUCTURE WITHIN THE LIMITS OF THIS PROJECT. THIS NOTE APPLIES TO ALL PAGES.
 IF WORK IS TO BE DONE IN A STATE HIGHWAY, A PERMIT MUST BE OBTAINED FROM THE STATE OF CALIFORNIA, DIVISION OF HIGHWAYS, 120 SOUTH SPRING STREET.

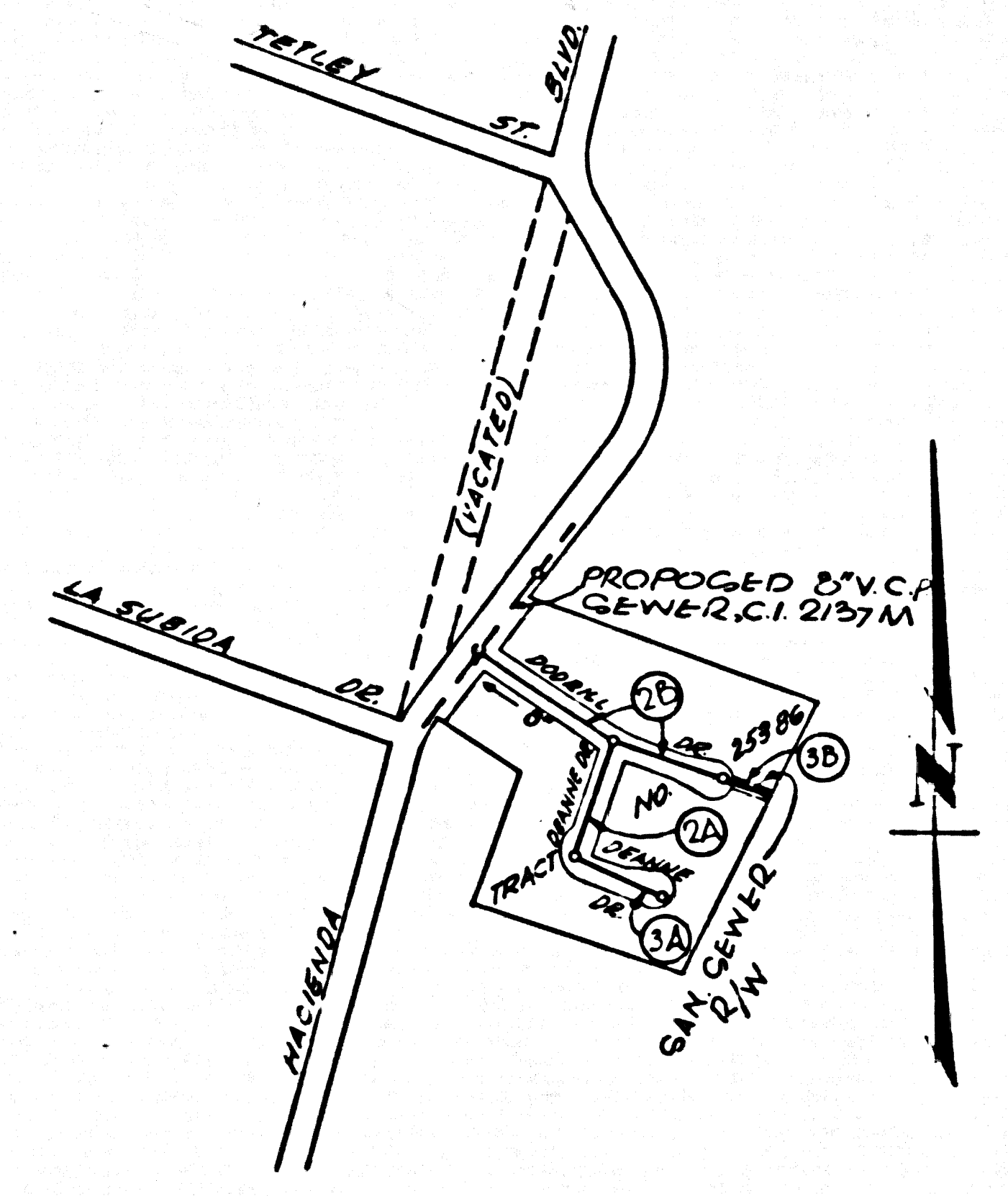
COUNTY OF LOS ANGELES, CALIFORNIA

APPROVED, JOHN A. LAMBIE, COUNTY ENGINEER APPROVED, J.D. PARKHURST, CHIEF ENGINEER
 DO. SAN. DIST. NO. 21

By: *E.E. Smith* ASST. SANITATION ENGINEER By: *G. Posthumus* OFFICE ENGINEER

CHECKED BY: *SK. Oida* OFFICE OF COUNTY ENGINEER, REG. C. E. NO. 3406

SUBMITTED *W.C. Reinhardt* SAN DIAGO REGIONAL ENGINEER

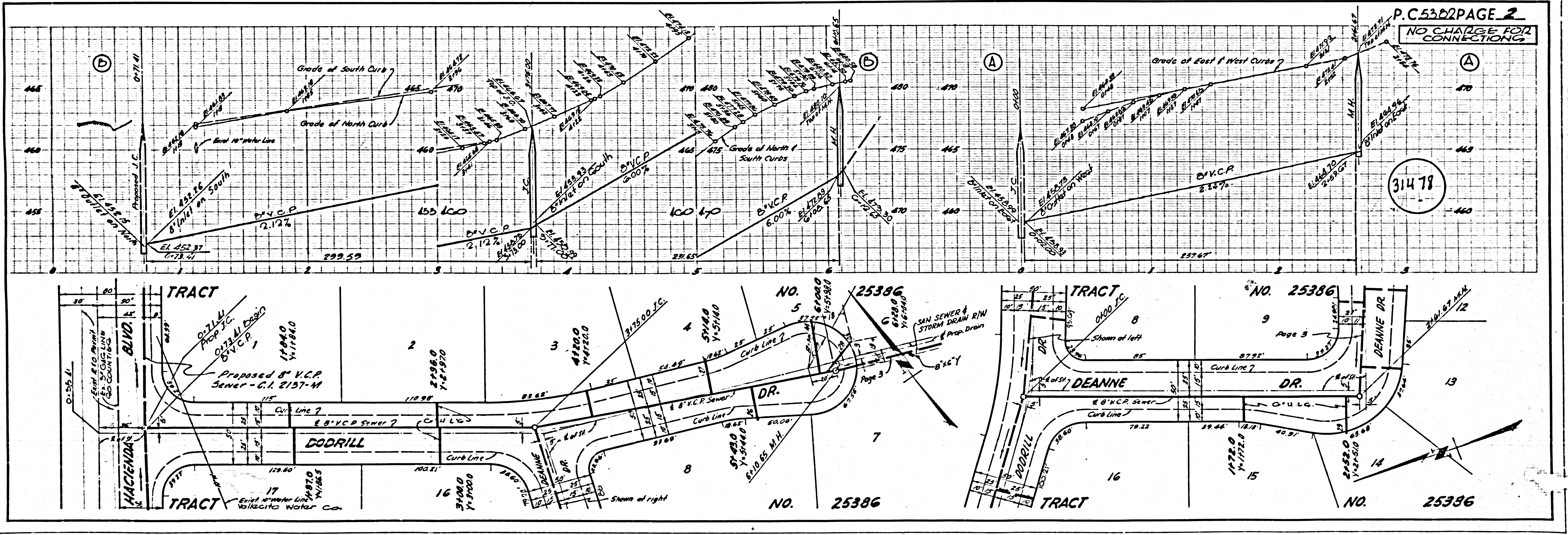


INDEX MAP
 TRACT No. 25386
 P.C. 5382 SCALE 1"=400'

B.M. S.G. 1616 Co. Sur. Monu. in well on approx. E of Los Altos Dr. 453' N. & Hacienda Blvd. M.D. 18 M. 38-9 1954 R.E. 63. ELEVATION 496.986 (Whittier Quad, Base Line 1955)

REVISION
 PAGE 3B
 Main line lowered between sta. 6+00.65 & 7+71.45
 APPROVED *W.C. Reinhardt* 2-15-61
 OFFICE OF COUNTY ENGINEER

REVISION
 PAGE 2A
 House laterals to lots 8 & 9 relocated.
 PAGE 2B
 Alignment changed from Sta. 3+75.00 to 6+10.65.
 PAGE 3 - Added Section B and deleted RW in sec. A.
 APPROVED *W.C. Reinhardt* 3-24-61
 OFFICE OF COUNTY ENGINEER

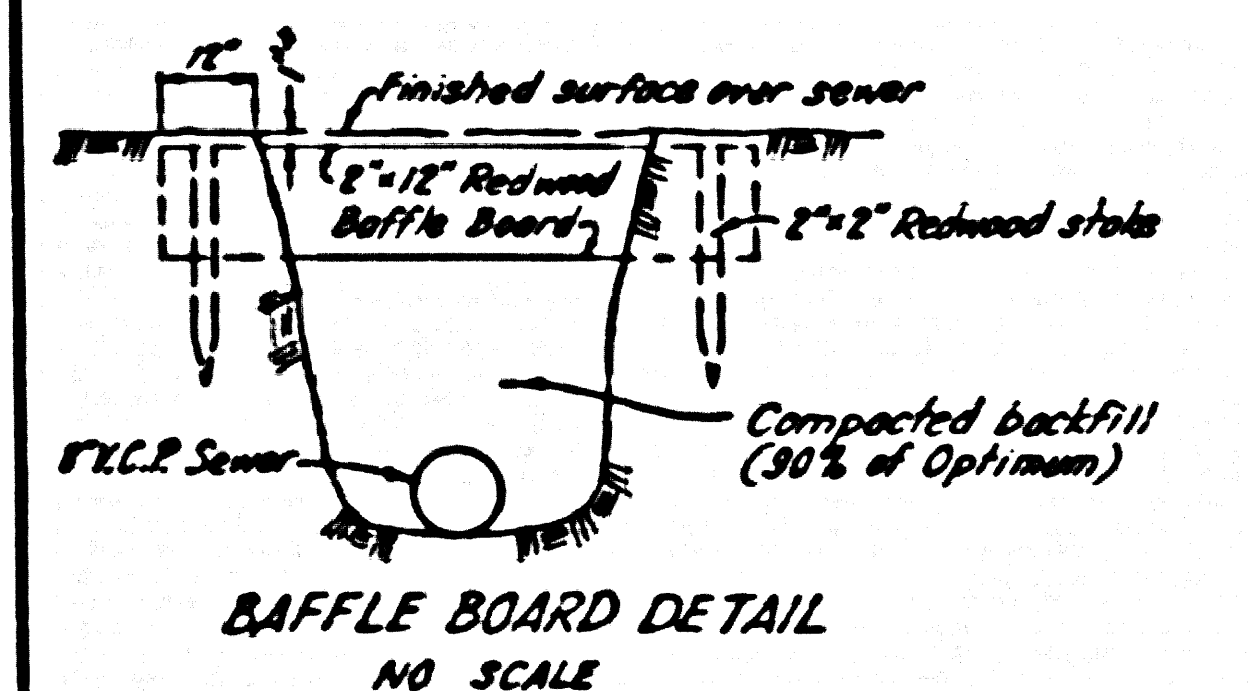
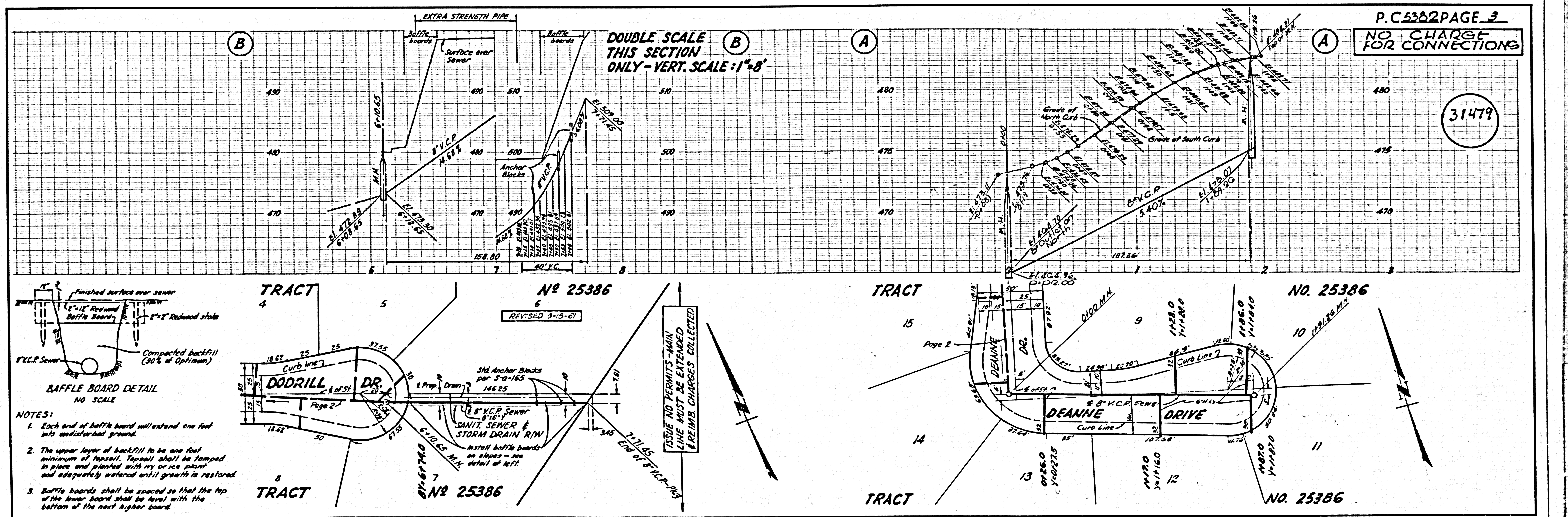


NO CHARGE FOR CONNECTIONS

31478

P.C. 5382 PAGE 2

NO. 25386



- NOTES:**
1. Each end of baffle board will extend one foot into undisturbed ground.
 2. The upper layer of backfill to be one foot minimum at top soil. Grass shall be stamped in place and planted with ivy or ice plant and adequately watered until growth is restored.
 3. Baffle boards shall be spaced so that the top of the lower board shall be level with the bottom of the next higher board.

