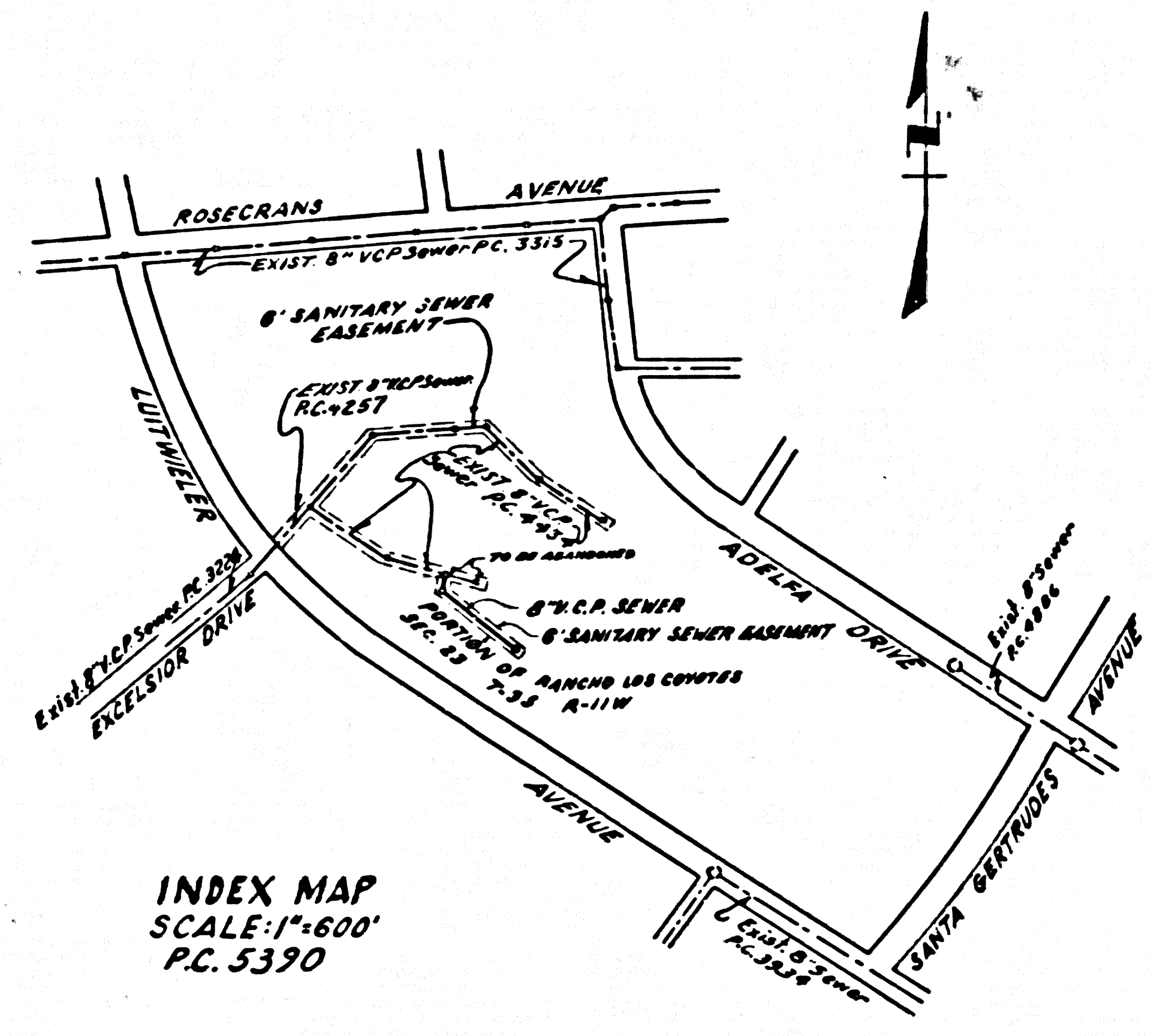


TRENCH MARK:
 8" x 8" STD. CO. SURVEY MARK MARKED "S" SET IN CONCRETE
 16" BELOW SURFACE ON APPROX. E. of LUITWIELER AVE. 72' ±
 NORTH OF S. OF STAKE #0 IN WELL PROTECTED BY CAST
 IRON COVER PER C.S. #2-1204-6 LOS ANGELES COUNTY, 1952
 A.D.I. ELEVATION 109.842



MIRADA HILLS BLDG. DIST. NO. 4-08

- NOTES:**
1. PROVIDE STAKES ON THE PROPERTY LINE OR PROPERTY LINES PRODUCED AT RIGHT ANGLES TO THE SEWER LINE AT THE CENTER LINE OF EACH MANHOLE.
 2. NO REPRESENTATIVE OF THE CITY ENGINEER WILL SURVEY OR LAY OUT ANY PORTION OF THE WORK.
 3. THE OWNER OR HIS AUTHORIZED REPRESENTATIVE SHALL FURNISH THE CITY ENGINEER WITH GRADE SHEETS AND STATIONING FOR ALL HOUSE LATERALS AND Y BRANCHES AND SHALL PROVIDE STAKES FOR THEM AT THEIR PROPER LOCATIONS WITH STATIONING PLAINLY MARKED. ANY CHANGE IN LOCATION SHALL BE REQUESTED IN WRITING BY THE OWNER OR HIS REPRESENTATIVE.
 4. NO REVISIONS SHALL BE MADE IN THESE PLANS WITHOUT THE APPROVAL OF THE CITY ENGINEER.
 5. USE STANDARD MANHOLE FRAMES AND COVERS, 5-117, Cover To read "Sewer"
 6. USE STANDARD STRENGTH PIPE
 7. USE CEMENT MORTAR OR "WEDGE-LOCK" OR "SPEED-SEAL" FOR ALL V.C.P. JOINTS PER SPEC'S, SECS. 16 & 17.
 8. RESURFACE ALL TRENCH WITHIN PAVED AREA TO MEET L.A. COUNTY ROAD DEPT. OR CALIF. STATE HIGHWAY REQUIREMENTS IN ACCORDANCE WITH PERMITS.
 9. ENCASE FOUR FEET OF SEWER AT POINTS OF INTERFERENCE WITH POLES, CASE NO. 5-117.
 10. HOUSE LATERALS TO BE CONSTRUCTED WITH INVERTS AT 100% FINISH GRADE - 100% BELOW FINISH GRADE - 200% - AS NOTED.
 11. ALL STRUCTURES SHALL BE BRICK SEWER STRUCTURES, 5-104.
 12. FOR ALLOWABLE LEAKAGE TEST USE FORMULA NO. 1, SPEC'S, SEC. 54.
 13. MANHOLE TOP* IN UNIMPROVED RIGHTS-OF-WAY TO BE SIX INCHES ABOVE FINISHED GRADE.
 14. THE CONTRACTOR SHALL NOTIFY THE CONSTRUCTION DIVISION BY TELEPHONE, MADISON 5-4741, EXT. 8-5611 AT LEAST TWENTY-FOUR HOURS BEFORE STARTING ANY WORK UNDER THIS CONTRACT.
 15. THE CONTRACTOR SHALL SATISFY HIMSELF OF ALL SUBSTRUCTURES AND SHALL BE RESPONSIBLE FOR THEIR LOCATION AND MAINTENANCE.
 16. STANDARD SPECIFICATIONS DATED JAN. 1, 1960 ON FILE WITH THE CITY APPLY IN THE CONSTRUCTION OF THIS PROJECT.

NO CHARGE FOR CONNECTIONS
 D. M. Hargrave 1-22-60

APPROVED BY *Don E. Lutes* 12/21/59
 INDUSTRIAL WASTE DIVISION

PROFILE ALIGNMENT AND GRADE OF P.C. 5390
 SANITARY SEWERS PAGE 1

TO BE CONSTRUCTED IN
 LA MIRADA
 BUSINESS CENTER
 R/W E/D LUITWIELER AVENUE
 PRIVATE CONTRACT NO. 5390

W.S. 34
 1 SHEET ; 2 PAGES
 SCALE: VERT. 1"=4' HORIZ. 1"=40' MAY, 1960
 PREPARED IN THE OFFICES OF
 M'INTIRE & QUIROS INC.
 BY: *Allen Murray* 12/21/59
 REG. C. E. NO. 9548

29,627

NOTE:
 GRADES TO WHICH THIS IMPROVEMENT IS TO BE CONSTRUCTED ARE SHOWN ON PLANS AND PROFILES. GRADE POINTS FOR TOP OF CURB CENTER LINE OF STREETS, ON CENTER LINE OF ALLEYS ARE SHOWN BY CIRCLES ON PROFILES. AT ALL POINTS BETWEEN DESIGNATED POINTS THE GRADE SHALL BE ESTABLISHED SO AS TO CONFORM TO A STRAIGHT LINE DRAWN BETWEEN SAID DESIGNATED POINTS.
 ELEVATIONS ARE IN FEET ABOVE U.S.C. & G.S. SEA LEVEL DATUM OF 1929.
 THIS DRAWING AND THE DATA HEREON ARE HEREBY MADE A PART OF THE SPECIFICATIONS.
 WORK SHALL BE CONSTRUCTED ACCORDING TO SPECIFICATIONS ON FILE IN THE OFFICE OF THE CITY ENGINEER AND SHALL BE PROSECUTED ONLY IN THE PRESENCE OF THE CITY ENGINEER.
 BEFORE WORK CAN BE STARTED THE CONTRACTOR MUST OBTAIN A PERMIT TO EXCAVATE IN COUNTY STREETS FROM THE L.A. COUNTY ROAD DEPT., DISTRICT OFFICE NO. 4 AND MAKE A DEPOSIT WITH THE CITY OF MIRADA HILLS RECORD PLANS.
 APPROVAL OF THIS PLAN BY THE CITY OF MIRADA HILLS DOES NOT CONSTITUTE A REPRESENTATION AS TO THE ACCURACY OF THE LOCATION OR OF THE EXISTENCE OR NON-EXISTENCE OF ANY UNDERGROUND UTILITY PIPE, OR STRUCTURE WITHIN THE LIMITS OF THIS PROJECT. THIS NOTE APPLIES TO ALL PAGES.
 IF WORK IS TO BE DONE IN A STATE HIGHWAY, A PERMIT MUST BE OBTAINED FROM THE STATE OF CALIFORNIA, DIVISION OF HIGHWAYS, 120 SOUTH SPRING STREET.

CITY OF MIRADA HILLS, CALIFORNIA
 APPROVED JOHN A. LAMBIE, CITY ENGINEER APPROVED C.R. COMPTON, CHIEF ENGINEER
 CO. SAN. DIST. NO. 18
 BY: *John A. Lambie* DESIGN ENGINEER BY: *E. P. Compton* OFFICE ENGINEER
 CHECKED BY: *B. F. Worthington* 8-25-60
 OFFICE OF CITY ENGINEER, REG. C. E. NO. 11636

SUBMITTED BY: *John A. Lambie* 8-25-60
 LOS LERRITOS REGIONAL ENGINEER, REG. C. E. NO. 3071

