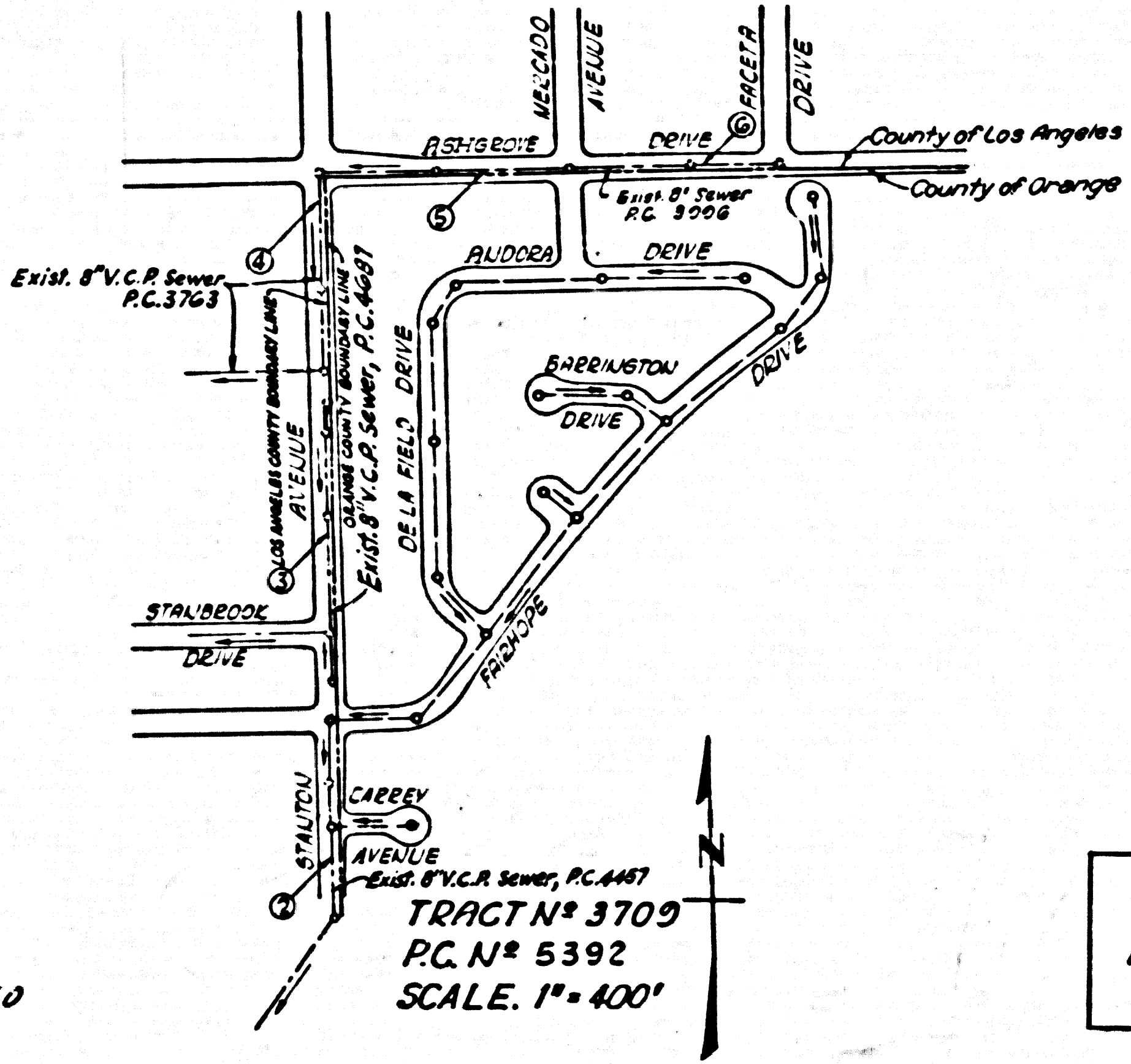


B.M. U.S.C. & G. R-778 Std. U.S.C. & G.S. Disc Stamped "R-778-1946" about 0.6 Mile N. along H'way #39 from the R.R. Station at Buena Park, about 300 N. of a bridge, 11' S. of a Eucalyptus tree, 40' W. of the E. of Highway #35, 12' E. of a white witness post (Ref. U.S.C. & G.S. Line 13) 1956 unadj. Elev. 108.45 1959 Adj. Elev. 108.506



Revised H.L. Locations & H.L.'s from 6" to 4" Sept. 2, 1960
All Pages
Approved *B. F. Worling* 9-8-60
Office of County Engineer

NO CHARGE
FOR CONNECTIONS
B. F. Worling 8-24-60

NORWALK BLDG. DIST. NO. 42

PROFILE ALIGNMENT AND GRADE OF P.C. 5392
SANITARY SEWERS PAGE 1

TRACT N° 3709 (29759)

PRIVATE CONTRACT NO. 5392

W.S. 94

3 SHEETS, 9 PAGES

SCALE: VERT. 1" = 4' HORIZ. 1" = 40' APRIL, 1960

PREPARED IN THE OFFICES OF
ENGINEERING SERVICE CORPORATION

By *B. F. Worling*
REG. C. E. NO. 3827

FOR LEGEND SEE PLAN NO. S-A-64

- NOTES
- PROVIDE STAKES ON THE PROPERTY LINE OR PROPERTY LINES PRODUCED AT RIGHT ANGLES TO THE SEWER LINE AT THE CENTER LINE OF EACH MANHOLE.
 - NO REPRESENTATIVE OF THE COUNTY ENGINEER WILL SURVEY OR LAY OUT ANY PORTION OF THE WORK.
 - THE OWNER OR HIS AUTHORIZED REPRESENTATIVE SHALL FURNISH THE COUNTY ENGINEER WITH GRADE SHEETS AND STATIONING FOR ALL HOUSE LATERALS AND Y BRANCHES AND SHALL PROVIDE STAKES FOR THEM AT THEIR PROPER LOCATIONS WITH STATIONING PLAINLY MARKED. ANY CHANGE IN LOCATION SHALL BE REQUESTED IN WRITING BY THE OWNER OR HIS REPRESENTATIVE.
 - THE PRIVATE ENGINEER SHALL FURNISH THE HOUSE LATERAL DEPTH AT THE PROPERTY LINE BELOW THE TOP OF CURB ELEVATION FOR EACH HOUSE LATERAL ON THE GRADE SHEET.
 - NO REVISIONS SHALL BE MADE IN THESE PLANS WITHOUT THE APPROVAL OF THE COUNTY ENGINEER.
 - USE STANDARD MANHOLE FRAMES AND COVERS, S-117, SPEC. 2, SEC. 34.
 - USE STANDARD STRENGTH PIPE EXCEPT AS NOTED.
 - USE CEMENT MORTAR OR "WEDGE-LOCK" OR "SPEED-SEAL" FOR ALL V.C.P. JOINTS PER SPEC. 2, SEC. 34 & 48.
 - RESURFACE A TRENCH WITHIN PAVED AREA TO MEET L.A. COUNTY ROAD DEPT. OR CALIF. STATE HIGHWAY REQUIREMENTS IN ACCORDANCE WITH PERMITS.
 - ENCASE FOUR FEET OF SEWER AT POINTS OF INTERFERENCE WITH POLES, CASE NO. S-172.
 - HOUSE LATERALS TO BE CONSTRUCTED WITH INVERTS AT PROPERTY LINE 6 FEET BELOW CURB GRADE EXCEPT AS NOTED.
 - ALL STRUCTURALS SHALL BE BACK SEWER STRUCTURES, S-104, SPEC. 2, SEC. 34.
 - FOR ALLOWABLE LEAKAGE TEST USE FORMULA NO. 1, SPEC. 2, SEC. 34.
 - MANHOLE TOPS IN UNIMPROVED RIGHTS-OF-WAY TO BE SIX INCHES ABOVE FINISHED GRADE.
 - THE CONTRACTOR SHALL NOTIFY THE CONSTRUCTION DIVISION BY TELEPHONE, MADISON 9-470, EXT. 81-88 AT LEAST TWENTY-FOUR HOURS BEFORE STARTING ANY WORK UNDER THIS CONTRACT.
 - STANDARD SPECIFICATIONS DATED JANUARY 1, 1960 APPLY IN THE CONSTRUCTION OF THIS PROJECT.
 - ALL HOUSE CONNECTIONS TO BE CONSTRUCTED UNDER THIS PLAN SHALL BE 4" K.C. PIPE.

ENGINEERING SERVICE CORPORATION 1127 W. WASHINGTON BLVD. LOS ANGELES 15, CALIF. RI. 9-7281					
REVISIONS			TRACED BY <i>W.L.</i>		
			DES'G'D BY <i>D.H.</i>		
			CK'D BY <i>A.A.M.</i>		
			SUBMITTED		
SUB STRUCTURES OK'D					
W. O. NO.	DWG. NO.	DATE	SCALE	L.B.	P.B.
6805-21		April 60	As Shown	10278	10279

NOTE: GRADES TO WHICH THIS IMPROVEMENT IS TO BE CONSTRUCTED ARE SHOWN ON PLANS AND PROFILES. GRADE POINTS FOR TOP OF CURBS, CENTER LINE OF STREETS, OR CENTER LINE OF ALLEYS ARE SHOWN BY CIRCLES ON PROFILES AT ALL POINTS BETWEEN DESIGNATED POINTS THE GRADE SHALL BE ESTABLISHED SO AS TO CONFORM TO A STRAIGHT LINE DRAWN BETWEEN SAID DESIGNATED POINTS.

ELEVATIONS ARE IN FEET ABOVE U.S.C. & G.S. SEA LEVEL DATUM OF 1929.

THIS DRAWING AND THE DATA HEREON ARE HEREBY MADE A PART OF THE SPECIFICATIONS.

WORK SHALL BE CONSTRUCTED ACCORDING TO SPECIFICATIONS ON FILE IN THE OFFICE OF THE COUNTY ENGINEER AND SHALL BE PROSECUTED ONLY IN THE PRESENCE OF THE COUNTY ENGINEER.

BEFORE WORK CAN BE STARTED, THE CONTRACTOR MUST OBTAIN A PERMIT TO EXCAVATE IN COUNTY STREETS FROM THE L.A. COUNTY ROAD DEPT., DISTRICT OFFICE NO. 6, AND PAY A FEE WITH THE COUNTY ENGINEER, ROOM 234 PAN AMERICAN BUILDING, 315 SO. BROADWAY EXHIBIT TO COVER THE COST OF CONSTRUCTION INSPECTION AND RECORD PLANS.

APPROVAL OF THIS PLAN BY THE COUNTY OF LOS ANGELES DOES NOT CONSTITUTE A REPRESENTATION AS TO THE ACCURACY OF THE LOCATION OF OR THE EXISTENCE OR NON-EXISTENCE OF ANY UNDERGROUND UTILITY PIPES, OR STRUCTURE WITHIN THE LIMITS OF THIS PROJECT. THIS NOTE APPLIES TO ALL PAGES.

IF WORK IS TO BE DONE IN A STATE HIGHWAY, A PERMIT MUST BE OBTAINED FROM THE STATE OF CALIFORNIA, DIVISION OF HIGHWAYS, 120 SOUTH SPRING STREET.

COUNTY OF LOS ANGELES, CALIFORNIA

APPROVED, JOHN A. LAMBE, COUNTY ENGINEER

APPROVED, C. B. COMPTON, CHIEF ENGINEER

By *B. F. Worling* SANITATION ENGINEER

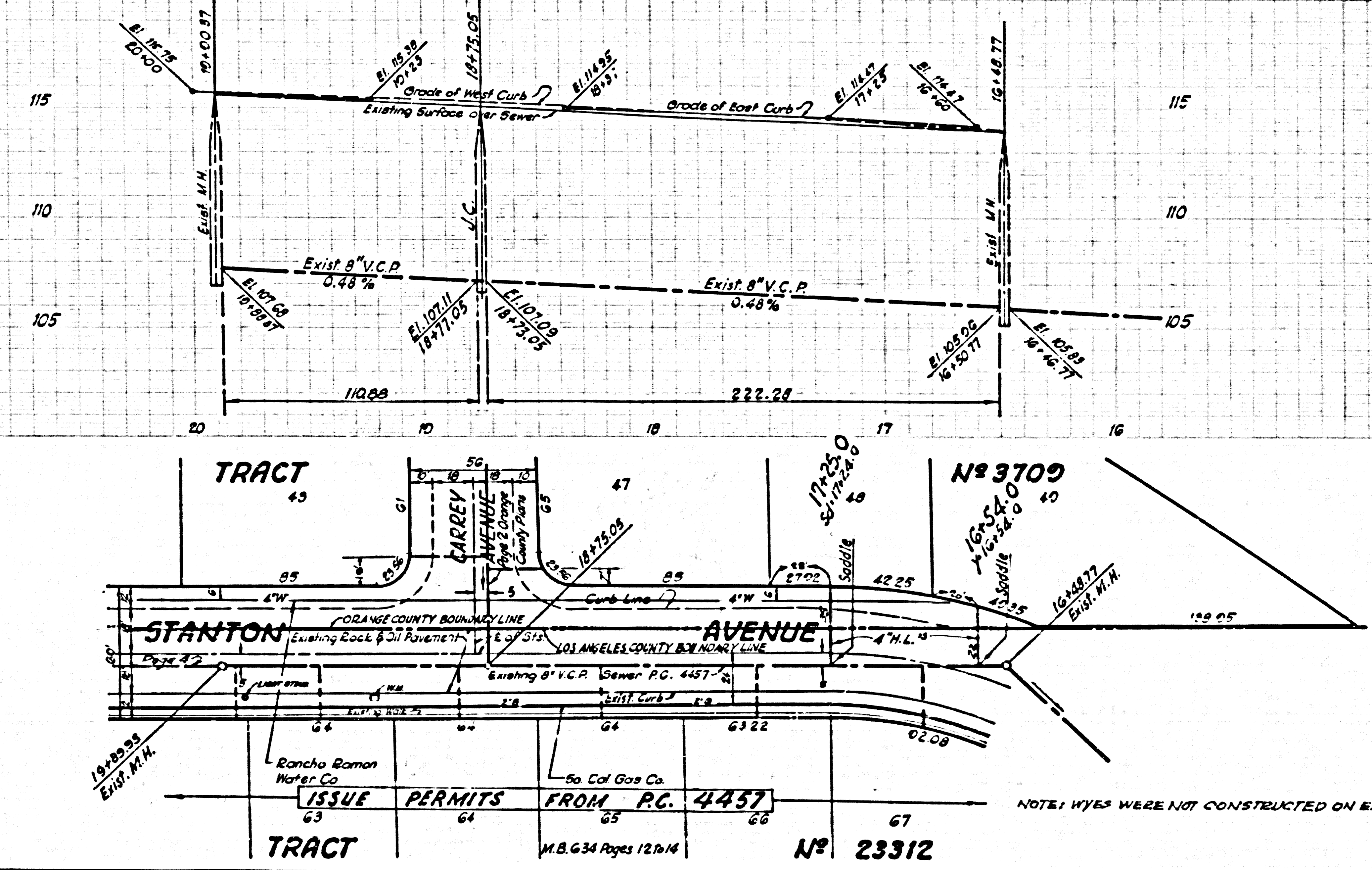
By *C. B. Compton* CHIEF ENGINEER

CHECKED BY *B. F. Worling* 8-23-60

OFFICE OF COUNTY ENGINEER, REG. C. E. NO. 11631

SUBMITTED BY *John L. Egan* 8-28-60

LOS CERRITOS REGIONAL ENGINEER, REG. C. E. NO. 3871



NO CHARGE FOR CONNECTIONS

(29760)

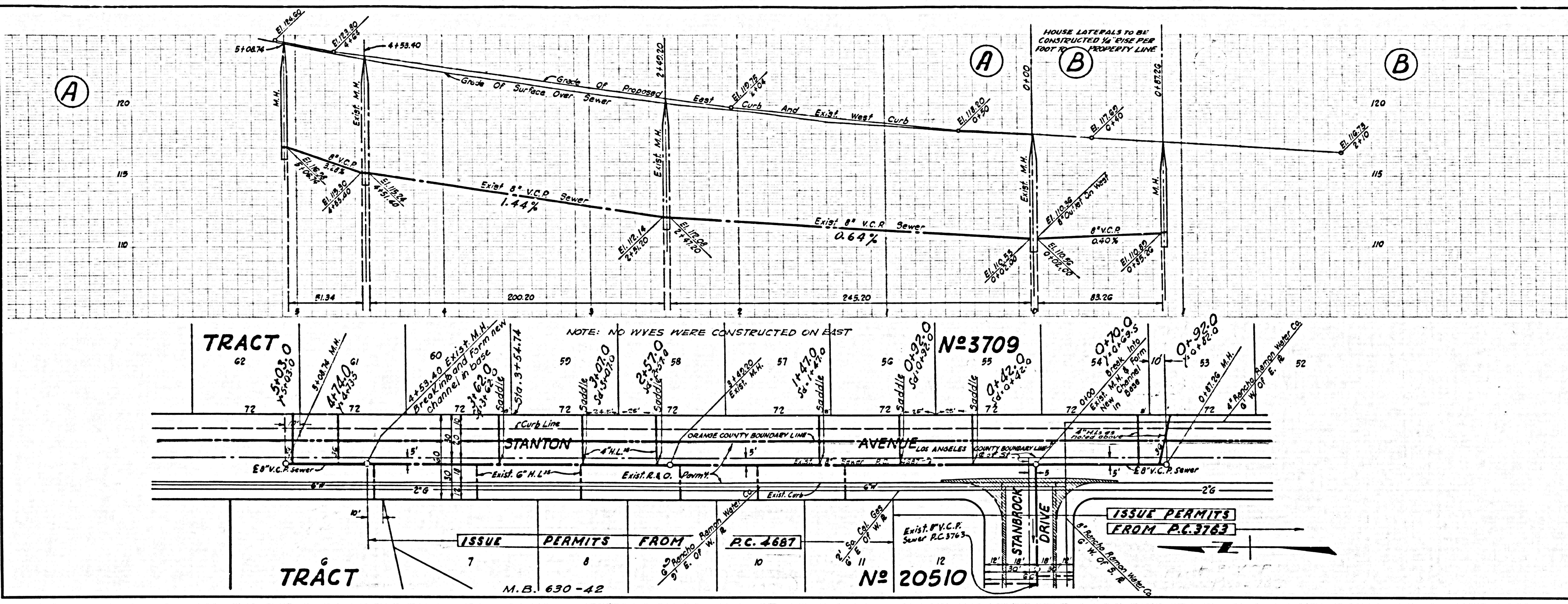
ISSUE PERMITS FROM P.C. 4457

NOTE: WYES WERE NOT CONSTRUCTED ON EAST.

M.B. 634 Pages 12 to 14

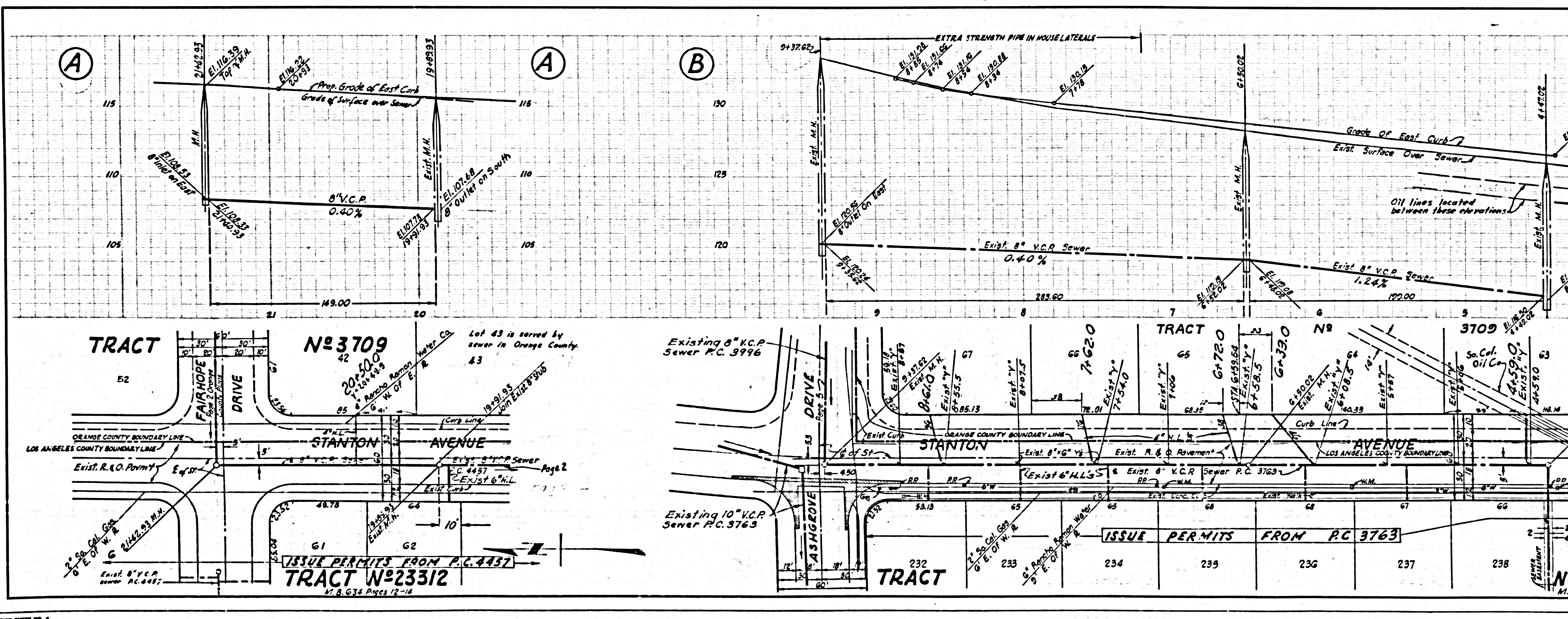
NO CHARGE FOR CONNECTIONS

29,761



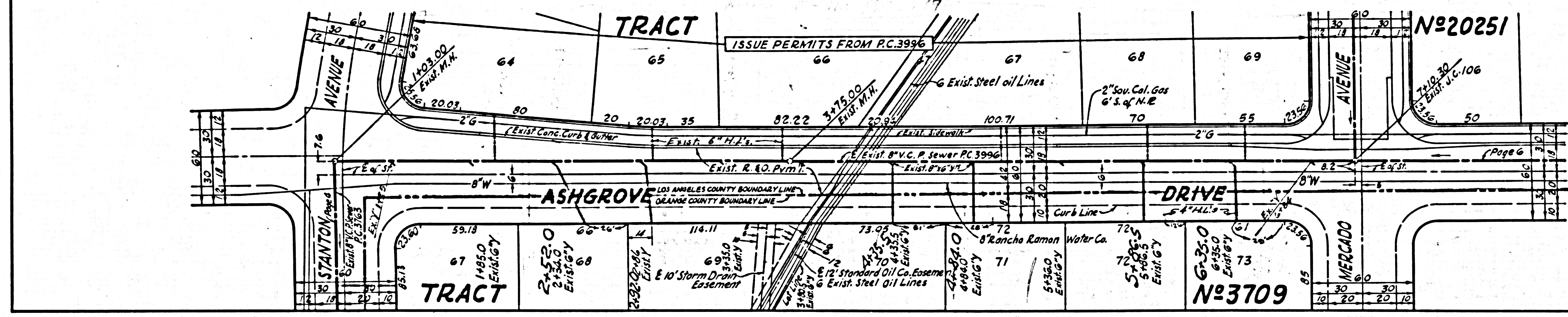
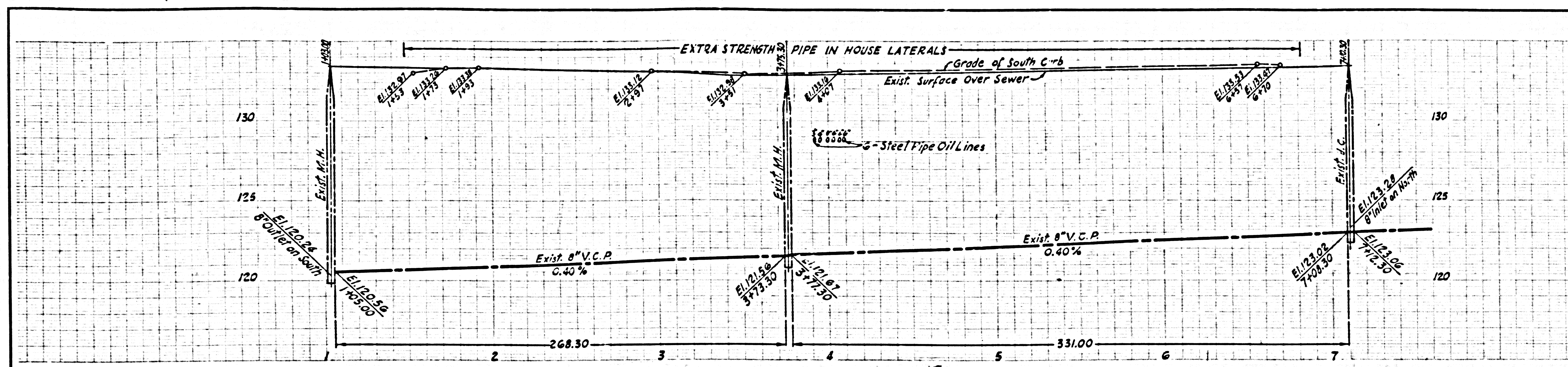
NO CHARGE FOR CONNECTIONS

29,762



NO CHARGE FOR CONNECTIONS

29,763



NO CHARGE FOR CONNECTIONS

29,764

