

DOUBLE SCALE
LOMITA BLDG. DIST. NO. 7.1

PROFILE ALIGNMENT AND GRADE OF P.C. 5398
SANITARY SEWERS PAGE 1
TO BE CONSTRUCTED IN J.N. 0352.58

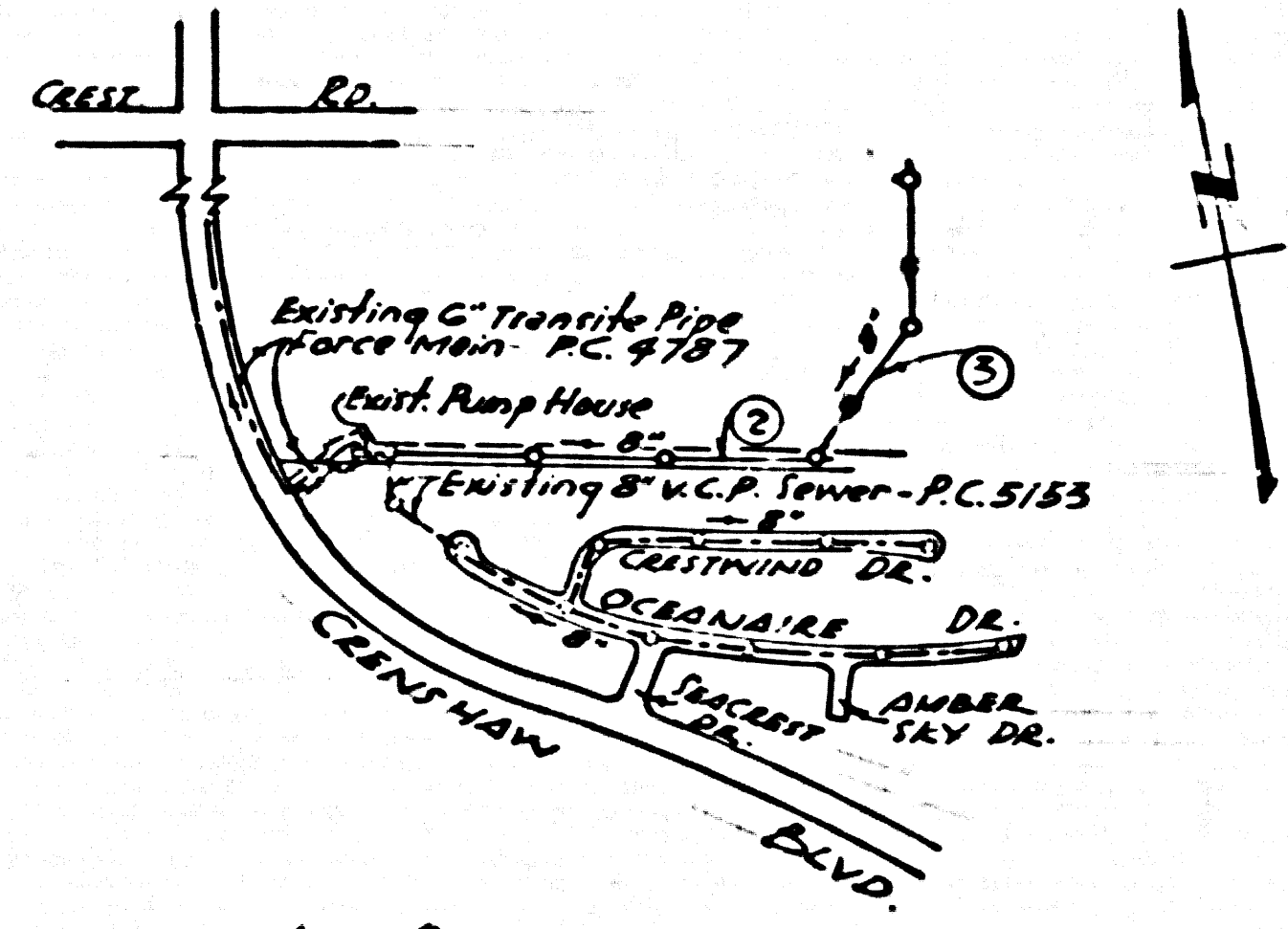
SANITARY SEWER R/W
PRIVATE CONTRACT NO. 5398

W.S. 27
2 SHEETS; 3 PAGES
SCALE: VERT. 1"=8'
HORIZ. 1"=40'
DECEMBER, 1959
PREPARED IN THE OFFICES OF

GILBERT ENGINEERING CO.
REG. C. E. NO. 1727
FOR LEGEND SEE PLAN NO. S-A-64

30213

B.M. SY. 4402 Elev. 1201.398 - L.A. Co. Survey men marked
B.M. 50-7-1256 in 12" conc. post - 4" above ground, N.E. cor.
Crest Road and Crenshaw Blvd. 925' east of center of pavement &
40' N. of center of pavement, 55' E. of power pole 1036438 E.



Note: Figure in circle indicates page number.

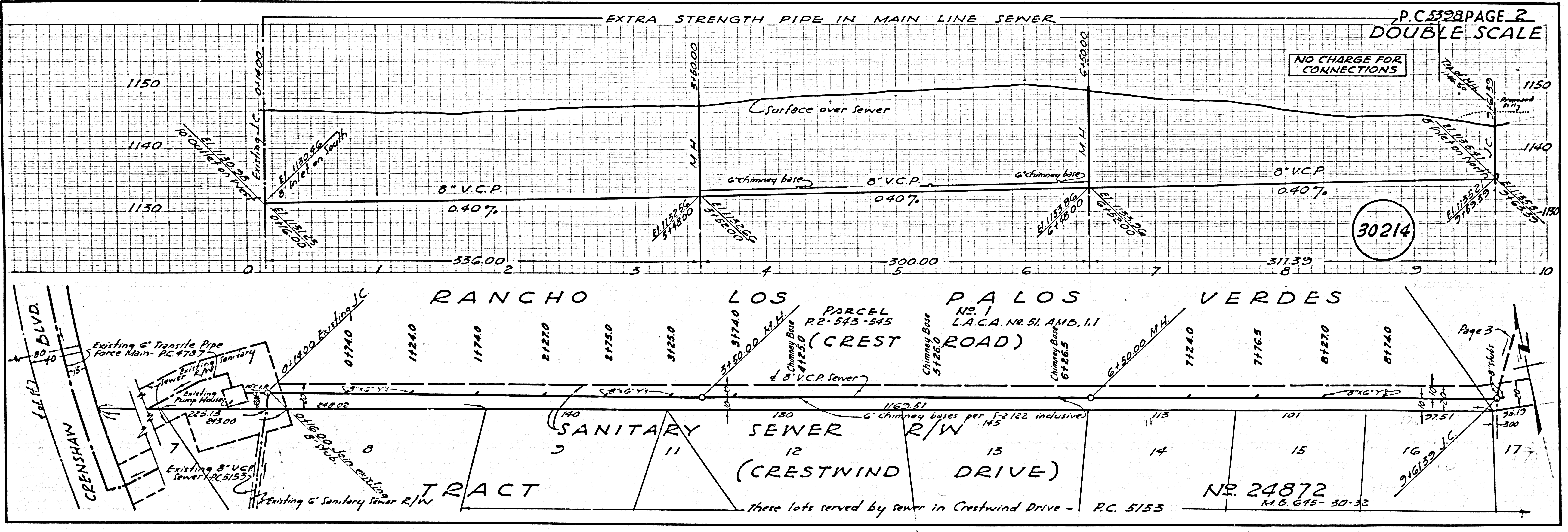
INDEX MAP
P.C. 5398
SCALE: 1"=600'

- NOTES:
1. PROVIDE STAKES ON THE PROPERTY LINE OR PROPERTY LINES PRODUCED AT RIGHT ANGLES TO THE SEWER LINE AT THE CENTER LINE OF EACH MANHOLE.
 2. NO REPRESENTATIVE OF THE COUNTY ENGINEER WILL SURVEY OR LAY OUT ANY PORTION OF THE WORK.
 3. THE OWNER OR HIS AUTHORIZED REPRESENTATIVE SHALL FURNISH THE COUNTY ENGINEER WITH GRADE SHEETS AND STATIONING FOR ALL HOUSE LATERALS AND Y BRANCHES AND SHALL PROVIDE STAKES FOR THEM AT THEIR PROPER LOCATIONS WITH STATIONING PLAINLY MARKED. ANY CHANGE IN LOCATION SHALL BE REQUESTED IN WRITING BY THE OWNER OR HIS REPRESENTATIVE.
 4. THE PRIVATE ENGINEER SHALL FURNISH THE HOUSE LATERAL DEPTH AT THE PROPERTY LINE BELOW THE TOP OF CURB ELEVATION FOR EACH HOUSE LATERAL ON THE GRADE SHEET.
 5. NO REVISIONS SHALL BE MADE IN THESE PLANS WITHOUT THE APPROVAL OF THE COUNTY ENGINEER.
 6. USE STANDARD MANHOLE FRAMES AND COVERS, S-117, 24" DIA. 24" HIGH.
 7. USE STANDARD STRENGTH PIPE EXCEPT AS NOTED.
 8. USE CE-HEAT MORTAR OR "WEDGE-LOCK" OR "SPEED-SEAL" FOR ALL V.C.P. JOINTS PER SPECS. SECS. 34 & 41.
 9. RESURFACE ALL TRENCH WITHIN PAVED AREA TO MEET L.A. COUNTY ROAD DEPT. OR CALIF. STATE HIGHWAY REQUIREMENTS IN ACCORDANCE WITH PERMITS.
 10. ENCASE FOUR FEET OF SEWER AT POINTS OF INTERFERENCE WITH POLES, CASE III, S-117.
 11. ~~ENCASE ALL SEWERS TO BE CONSTRUCTED WITHIN INTERFERE AT PROPERTY LINE WITH BELOW-GRADE CABLES.~~
 12. ALL STRUCTURES SHALL BE BRICK SEWER STRUCTURES, S-104, SPEC. AS NOTED.
 13. FOR ALLOWABLE LEAKAGE TEST USE FORMULA NO. 1, SPECS. SEC. 54.
 14. MANHOLE TOPS IN UNIMPROVED RIGHTS-OF-WAY TO BE SIX INCHES ABOVE FINISHED GRADE.
 15. THE CONTRACTOR SHALL NOTIFY THE CONSTRUCTION & STORM DRAIN DIVISION BY TELEPHONE, MADISON 5-4747, EXT. 551 AT LEAST TWENTY-FOUR HOURS BEFORE STARTING ANY WORK UNDER THIS CONTRACT.
 16. STANDARD SPECIFICATIONS DATED OCT. 10, 1960 APPLY IN THE CONSTRUCTION OF THIS PROJECT.

NO CHARGE FOR CONNECTIONS
L. Carter 10-13-60

NOTE:
GRADES TO WHICH THIS IMPROVEMENT IS TO BE CONSTRUCTED ARE SHOWN ON PLANS AND PROFILES. GRADE POINTS FOR TOP OF CURBS, CENTER LINE OF STREETS, OR CENTER LINE OF ALLEYS ARE SHOWN BY CIRCLES ON PROFILES. AT ALL POINTS BETWEEN DESIGNATED POINTS THE GRADE SHALL BE ESTABLISHED SO AS TO CONFORM TO A STRAIGHT LINE DRAWN BETWEEN SAID DESIGNATED POINTS.
ELEVATIONS ARE IN FEET ABOVE U.S.C. & G.S. SEA LEVEL DATUM OF 1929.
THIS DRAWING AND THE DATA HEREON ARE HEREBY MADE A PART OF THE SPECIFICATIONS.
WORK SHALL BE CONSTRUCTED ACCORDING TO SPECIFICATIONS ON FILE IN THE OFFICE OF THE COUNTY ENGINEER AND SHALL BE PROSECUTED ONLY IN THE PRESENCE OF THE COUNTY ENGINEER.
BEFORE WORK CAN BE STARTED, THE CONTRACTOR MUST OBTAIN A PERMIT TO EXCAVATE IN COUNTY STREETS FROM THE L.A. COUNTY ROAD DEPT., DISTRICT OFFICE NO. 1, AND PAY A FEE TO THE COUNTY ENGINEER, ROOM 321 PAN AMERICAN BUILDING, 321 S.O. HIGHWAY SUFFICIENT TO COVER THE COST OF CONSTRUCTION INSPECTION AND RECORD PLANS.
APPROVAL OF THIS PLAN BY THE COUNTY OF LOS ANGELES DOES NOT CONSTITUTE A REPRESENTATION AS TO THE ACCURACY OF THE LOCATION OF OR THE EXISTENCE OR NON-EXISTENCE OF ANY UNDERGROUND UTILITY PIPE, OR STRUCTURE WITHIN THE LIMITS OF THIS PROJECT. THIS NOTE APPLIES TO ALL PAGES.
IF WORK IS TO BE DONE IN A STATE HIGHWAY, A PERMIT MUST BE OBTAINED FROM THE STATE OF CALIFORNIA, DIVISION OF HIGHWAYS, 120 SOUTH SPRING STREET.

COUNTY OF LOS ANGELES, CALIFORNIA
APPROVED, JOHN A. LAMBIE, COUNTY ENGINEER
APPROVED, C.R. COMPTON, CHIEF ENGINEER
BY: [Signature] ASST. SANITATION ENGINEER
BY: [Signature] OFFICE ENGINEER
CHECKED BY: [Signature] 10-13-60
OFFICE OF COUNTY ENGINEER, REG. C. E. NO. 2406
SUBMITTED BY: [Signature] PALOS VERDES-CENTINELA VALLEY REGIONAL ENGINEER



NO CHARGE FOR CONNECTIONS

30214

P.C. 5398 PAGE 2
DOUBLE SCALE

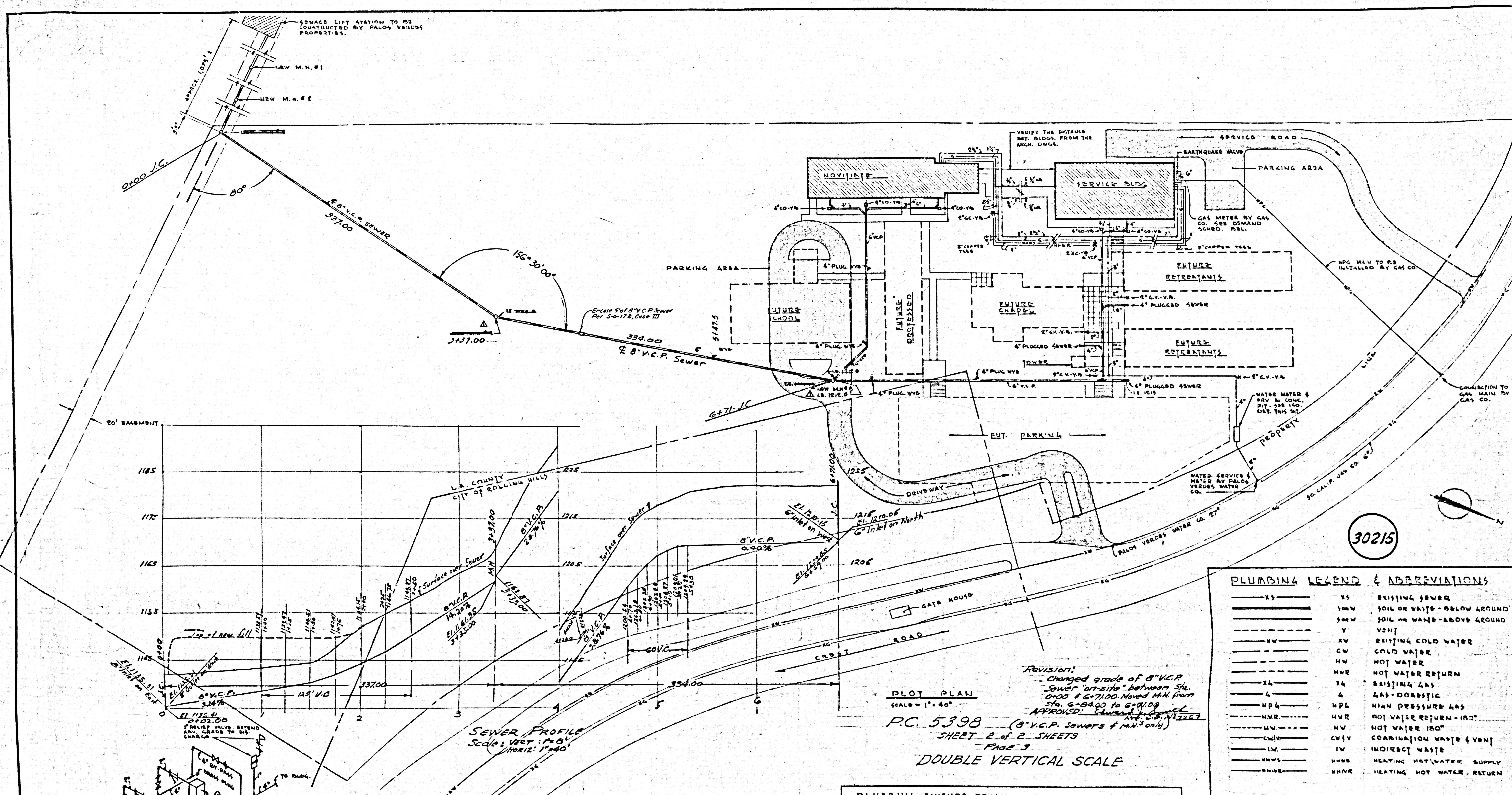
RANCHO LOS PALOS VERDES

PARCEL NO. 1 L.A.C.A. NO. 51, AND, 1.1 (CREST ROAD)

SANITARY SEWER R/W (CRESTWIND DRIVE)

NO. 24872 M.B. 695-30-32

These lots served by sewer in Crestwind Drive - P.C. 5153



SEWAGE LIFT STATION TO BE CONSTRUCTED BY PALOS VERDES PROPERTIES.

NEW M.H. #1
NEW M.H. #2

8" V.C.P. SEWER
COLLECTOR

156° 30' 00"

3137.00

334.00

8" V.C.P. Sewer

20' BASEMENT

1185
1170
1165
1155

L.A. COUNTY CITY OF ROLLING HILLS

Surface over Sewer

8" V.C.P. 0.30%

SEWER PROFILE
Scale: VERT: 1"=6'
HORIZ: 1"=40'

WATER PRESS. RED. VALVE ASSEMBLY

WATER PRESS. RED. VALVE ASSEMBLY

GAS DEMAND SCHEDULE IN C.F.H.

	SPACE HTG.	WATER HTG.	COOKING	INCUBATOR	OTHER
EXISTING					
PRESENT	1023	334			
FUTURE	2046	500			
TOTAL	3069	834			

NO. DATE REVISION BY/CHK

GENERAL NOTES:

1. ALL SOIL, WASTE & VENT PIPING SHALL BE RUN AT 1/8" PER FT SLOPE UNLESS OTHERWISE INDICATED ON THE DRAWINGS.
2. THIS CONTRACTOR SHALL VERIFY ALL PIPING DEPTHS AND LOCATIONS AS TO:
 - a. AVOID "CROSSOVER" INTERFERENCES.
 - b. MAINTAIN PIPE SLOPES.
 - c. DETERMINE CONNECTION POINTS WITH EXISTING UTILITIES.
 ANY DISCREPANCY SHALL BE CALLED TO THE ARCHITECT'S ATTENTION.
3. MANHOLES SHALL BE INSTALLED PER L.A. COUNTY STANDARDS

Revision:
- Changed grade of 8" V.C.P. Sewer "on-site" between Sta. 0+00 & 6+71.00. Moved M.H. from Sta. 6+84.00 to 6+91.00

APPROVED: [Signature]

PLOT PLAN
SCALE = 1" = 40'
PC. 5398 (8" V.C.P. Sewers & M.H.'s only)
SHEET 2 OF 2 SHEETS
PAGE 3
DOUBLE VERTICAL SCALE

PLUMBING FIXTURE ROUGH-IN CONNECTIONS

FIXTURE	C.W.	H.W.	TRAP	SEW.	V.	REMARKS
WATER CLOSET - FLUSH VALVE	1"	1"	4"	4"	2'-6"	
WATER CLOSET - FLUSH TANK	1"	1"	4"	4"	2'-6"	
URINAL - WALL MOUNT	3/4"	1"	8"	8"	11"	FLUSH VALVE
LAVATORY	1/2"	1/2"	1 1/2"	1 1/2"	11"	
BATH TUB	1/2"	1/2"	1 1/2"	1 1/2"	11"	
SHOWER	1/2"	1/2"	1 1/2"	1 1/2"	11"	PRECAST RECEPTORS
SERVICE SINK	1/2"	1/2"	2"	2"	11"	
LAUNDRY TRAY	1/2"	1/2"	2"	2"	11"	
SINK - SINGLE COMPARTMENT	1/2"	1/2"	2"	2"	11"	SINGLE COMP.
SINK - DOUBLE COMPARTMENT	1/2"	1/2"	2"	2"	11"	
DRINKING FOUNTAIN	1/2"	1/2"	1 1/2"	1 1/2"	11"	SEMI-RECESSED
FLOOR DRAIN	1/2"	1/2"	2'-3"	2'-3"	11"	
FLOOR SINK	1/2"	1/2"	2'-3"	2'-3"	11"	

PLUMBING LEGEND & ABBREVIATIONS

ES	ES	EXISTING SEWER
SWW	SWW	SOIL OR WASTE - BELOW GROUND
SAW	SAW	SOIL OR WASTE - ABOVE GROUND
V	V	VENT
XW	XW	EXISTING COLD WATER
CW	CW	COLD WATER
HW	HW	HOT WATER
HWR	HWR	HOT WATER RETURN
EA	EA	EXISTING GAS
G	G	GAS - DOMESTIC
HP4	HP4	HIGH PRESSURE GAS
HWR	HWR	HOT WATER RETURN - 180°
HV	HV	HOT WATER 180°
CMV	CMV	COMBINATION WASTE & VENT
IW	IW	INDIRECT WASTE
HWS	HWS	HEATING HOT WATER SUPPLY
HWR	HWR	HEATING HOT WATER RETURN

WC	WC	WATER CLOSET	FD	FD	FLOOR DRAIN
L	L	LAVATORY	FS	FS	FLOOR SINK
U	U	URINAL	HS	HS	HOSE BIBS
SS	SS	SERVICE SINK	SC	SC	SHILL COCK
DP	DP	DRINKING FOUNTAIN	VTR	VTR	VENT THROUGH ROOF
EW	EW	ELECTRIC WATER COOLER	CO	CO	CLEANOUT
BT	BT	BATH TUB	W.C.	W.C.	WALL CLEANOUT
SH	SH	SHOWER	P.C.	P.C.	FLOOR CLEANOUT
S	S	SINK	AM	AM	MANHOLE
LT	LT	LAUNDRY TRAY	PT	PT	PLUGGED TIE
FNC	FNC	FIRE HOSE CABINET	AV	AV	ANTI VALVE
CI	CI	CAST IRON	YB	YB	YARD BENCH
KU	KU	KITCHEN UNIT	PC	PC	PLUG COCK
BC	BC	BALANCE COCK	SOV	SOV	SHUT-OFF VALVE
AC	AC	ACCESS COCK	IE	IE	INVERT ELEVATION
VCP	VCP	VITRIFIED CLAY PIPE			

NOVIATE & SERVICE BUILDING
FOR THE DAUGHTERS OF MARY AND JOSEPH
PALOS VERDES CALIFORNIA

GENE VERGE & R.N. CLATWORTHY
ARCHITECTS & ASSOCIATES
MEMBERS OF THE AMERICAN INSTITUTE OF ARCHITECTS
4348 EAGLE ROCK BLVD., LOS ANGELES 41, CALIF. CL 5180

PROJECT NO. 446
DATE 10-1-59

PLUMBING & HEATING
PLOT PLAN, LEGEND, SCHEDULES & NOTES

M-1