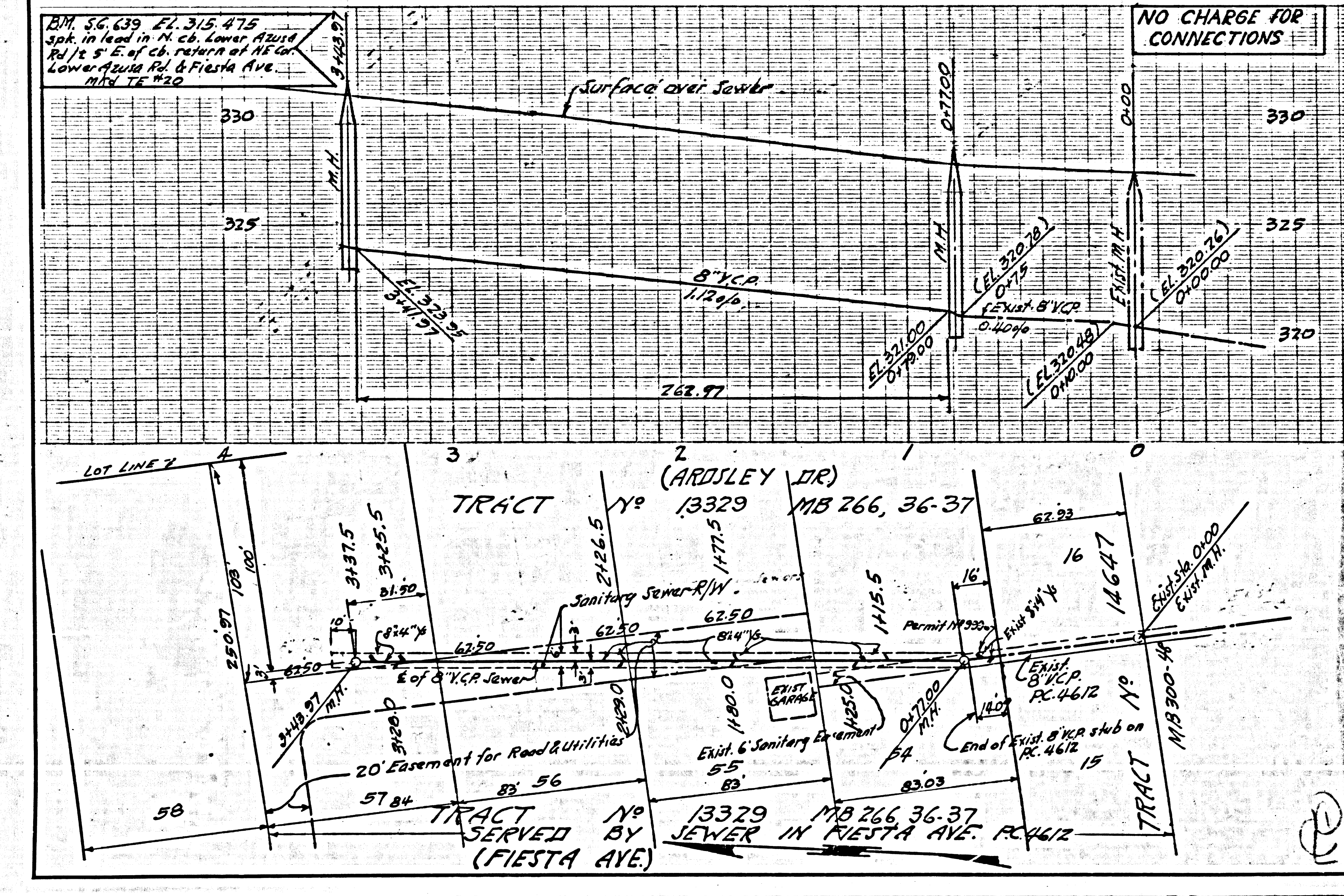


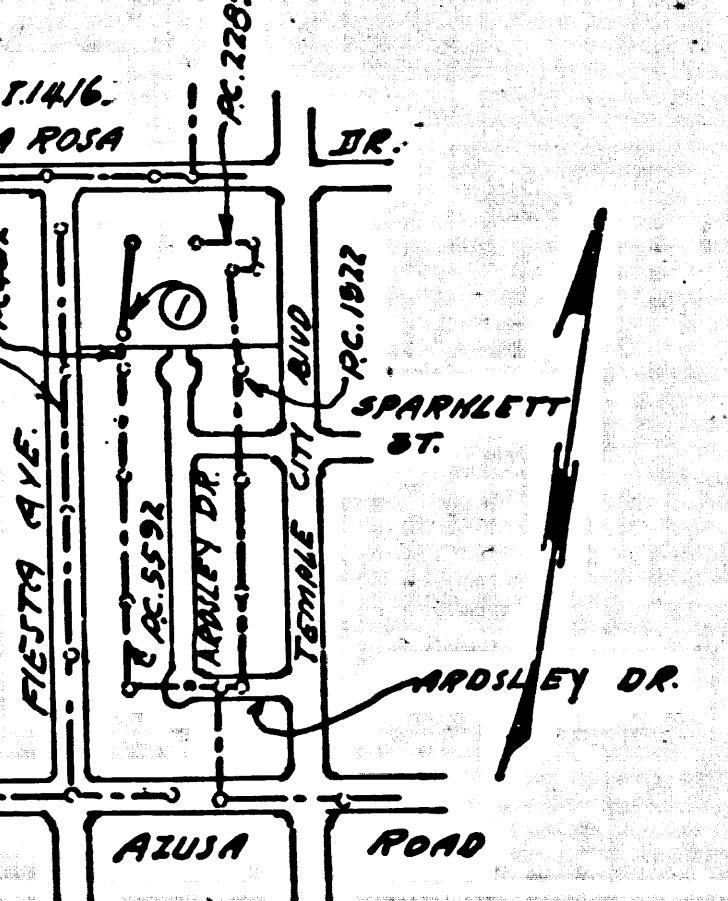
BC 2405
 PC 5402
 BC 2405



TEMPLE CITY BLDG. DIST. NO. 5

- NOTES**
- PROVIDE STAKES ON THE PROPERTY LINE OR PROPERTY LINES PRODUCED AT RIGHT ANGLES TO THE SEWER LINE AT THE CENTER LINE OF EACH MANHOLE.
 - NO REPRESENTATIVE OF THE COUNTY ENGINEER WILL SURVEY OR LAYOUT ANY PORTION OF THE WORK.
 - THE OWNER OR HIS AUTHORIZED REPRESENTATIVE SHALL FURNISH THE COUNTY ENGINEER WITH GRADE SHEETS AND STATIONING FOR ALL HOUSE LATERALS AND Y BRANCHES AND SHALL PROVIDE STAKES FOR THEM AT THEIR PROPER LOCATIONS WITH STATIONING PLAINLY MARKED. ANY CHANGE IN LOCATION SHALL BE REQUESTED IN WRITING BY THE OWNER OR HIS REPRESENTATIVE. NO REVISIONS SHALL BE MADE IN THESE PLANS WITHOUT THE APPROVAL OF THE COUNTY ENGINEER.
 - USE STANDARD STRENGTH PIPE 12\"/>
 - USE CEMENT MORTAR JOINTS OR JOINTS OF EQUAL STRENGTH FOR ALL JOINTS PER SPEC. 362-48.
 - RESURFACE ALL TRENCH WITHIN PAVED AREA TO MEET L. A. COUNTY ROAD DEPT., OR CALIF. STATE HIGHWAY DEPT. REQUIREMENTS IN ACCORDANCE WITH PERMITS.
 - ENCASE FOUR FEET OF SEWER AT POINTS OF INTERFERENCE WITH POLES, CASE III S-8-72.
 - MANHOLE TOPS TO BE CONFORM TO L. A. COUNTY ROAD DEPT. SPECIFICATIONS.
 - ALL STRUCTURES SHALL BE BRICK SEWER STRUCTURES, S-A-704.
 - FOR ALLOWABLE LEAKAGE TEST USE FORMULA NO. 1, SPEC. S-8-56.
 - THE CONTRACTOR SHALL NOTIFY THE DESIGN DIVISION BY TELEPHONE - RADIAN 3-4747, EXT. 362, AT LEAST 24 HRS. BEFORE STARTING WORK UNDER THIS CONTRACT.
 - MANHOLE TOPS IN UNIMPROVED RIGHT OF WAY TO BE SIX INCHES ABOVE FINISHED GRADE.
 - STANDARD SPECIFICATIONS DATED JAN. 1, 1960 SHALL BE USED IN THE CONSTRUCTION OF THIS PROJECT.

NO CHARGE FOR CONNECTIONS
C. S. Robertson 1/1/60



PROFILE ALIGNMENT AND GRADE OF **P.C. 5402**
SANITARY SEWERS PAGE 1
 TO BE CONSTRUCTED IN
SANITARY SEWER EASEMENT
EAST OF FIESTA AVE & SO. OF LA ROSA DR.

PRIVATE CONTRACT NO. 5402
 W.S. 44
 1 SHEET OF 1 PAGE
 SCALE: VERT. 1" = 4' HORIZ. 1" = 40'
 PREPARED IN THE OFFICES OF
29414
JAN, 1960

BY *Chas. N. Beck*
 REG. C. E. NO. 2839
 FOR LEGEND SEE PLAN NO. S-A-64

NOTE:
 GRADES TO WHICH THIS IMPROVEMENT IS TO BE CONSTRUCTED ARE SHOWN ON PLANS AND PROFILES. GRADE POINTS FOR TOP OF CURBS, CENTER LINE OF STREETS, OR CENTER LINE OF ALLEYS ARE SHOWN BY CIRCLES ON PROFILES. AT ALL POINTS BETWEEN DESIGNATED POINTS THE GRADE SHALL BE ESTABLISHED SO AS TO CONFORM TO A STRAIGHT LINE DRAWN BETWEEN SAID DESIGNATED POINTS.
 ELEVATIONS ARE IN FEET ABOVE U.S.C. & G.S. SEA LEVEL DATUM OF 1929.
 THIS DRAWING AND THE DATA HEREON ARE HEREBY MADE A PART OF THE SPECIFICATIONS.
 WORK SHALL BE CONSTRUCTED ACCORDING TO SPECIFICATIONS ON FILE IN THE OFFICE OF THE COUNTY ENGINEER AND SHALL BE PROSECUTED ONLY IN THE PRESENCE OF THE COUNTY ENGINEER.
 BEFORE WORK CAN BE STARTED, THE CONTRACTOR MUST OBTAIN A PERMIT TO EXCAVATE IN COUNTY STREETS FROM THE L. A. COUNTY ROAD DEPT., 2225 SPRING ST. AND FROM THE COUNTY ENGINEER, ROOM 214 SAN AMERICAN BUILDING, 332 SO. BROADWAY SUFFICIENT TO COVER THE COST OF CONSTRUCTION INSPECTION AND RECORD PLANS.
 APPROVAL OF THIS PLAN BY THE COUNTY OF LOS ANGELES DOES NOT CONSTITUTE A REPRESENTATION AS TO THE ACCURACY OF THE LOCATION OF OR THE EXISTENCE OR NON-EXISTENCE OF ANY UNDERGROUND UTILITY PIPE, OR STRUCTURE WITHIN THE LIMITS OF THIS PROJECT. THE NOTE APPLIES TO ALL PAGES.
 IF WORK IS TO BE DONE IN A STATE HIGHWAY, A PERMIT MUST BE OBTAINED FROM THE STATE OF CALIFORNIA, DIVISION OF HIGHWAYS, 120 SOUTH SPRING STREET.

COUNTY OF LOS ANGELES, CALIFORNIA
 APPROVED, JOHN A. LAMBE, COUNTY ENGINEER
 APPROVED, *C. R. Compton*, CHIEF ENGINEER
 SAN. DIST. NO. 15
 BY *C. E. Brund*, ASST. SANITATION ENGINEER
 BY *M. J. Matthews*, OFFICE ENGINEER
 CHECKED BY *W. D. Duda*, 4-22-60
 OFFICE OF COUNTY ENGINEER, REG. C. E. NO. 3406

SUBMITTED: *N. F. Bravender*
 JAN GABRIEL VALLEY REGIONAL ENGINEER

BC 2405
 BVM EARL OF FIESTA AVE
 BC 2405