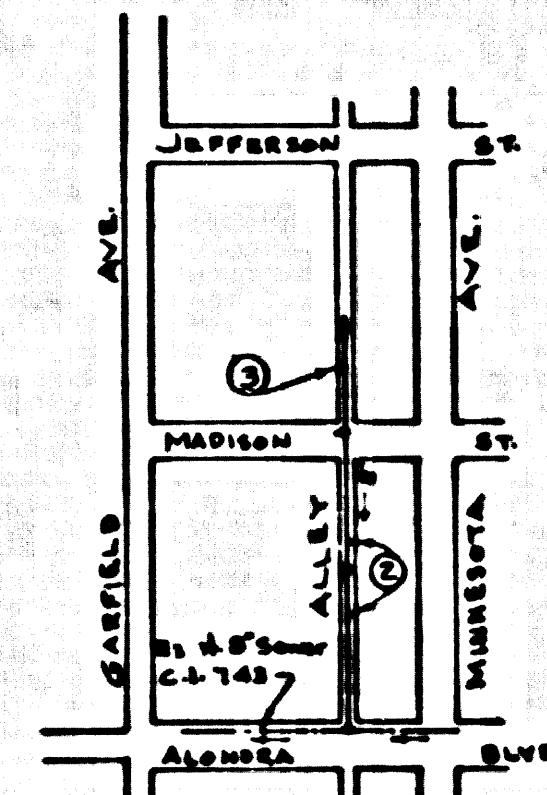


B.M. 5Y 1916 Elev. 68.001 (1955)  
 L & T in SW end conc. gas station pump island at  
 N.E. cor. Olive St. (Alondra Blvd.) & Garfield Ave. ± 53'  
 E. of & Garfield Ave. & 100' N. of & Olive St. First gas  
 island E. of & Garfield Ave. Bellflower Quad.



INDEX MAP  
 Scale 1"=600'  
 P.C. 5405

PARAMOUNT BLDG. DIST. NO. 4.04

NOTES:

1. PROVIDE STAKES ON THE PROPERTY LINE OR PROPERTY LINES PRODUCED AT RIGHT ANGLES TO THE SEWER LINE AT THE CENTER LINE OF EACH MANHOLE.
2. NO REPRESENTATIVE OF THE CITY ENGINEER WILL SURVEY OR LAY OUT ANY PORTION OF THE WORK.
3. THE OWNER OR HIS AUTHORIZED REPRESENTATIVE SHALL FURNISH THE CITY ENGINEER WITH GRADE SHEETS AND STATIONING FOR ALL HOUSE LATERALS AND Y BRANCHES AND SHALL PROVIDE STAKES FOR THEM AT THEIR PROPER LOCATIONS WITH STATIONINGS PLAINLY MARKED. ANY CHANGE IN LOCATION SHALL BE REQUESTED IN WRITING BY THE OWNER OR HIS REPRESENTATIVE.
4. THE PRIVATE ENGINEER SHALL FURNISH THE HOUSE LATERAL DEPTH AT THE PROPERTY LINE BELOW THE TOP OF CURB ELEVATION FOR EACH HOUSE LATERAL ON THE GRADE SHEET.
5. NO REVISIONS SHALL BE MADE IN THESE PLANS WITHOUT THE APPROVAL OF THE CITY ENGINEER.
6. USE STANDARD MANHOLE FRAMES AND COVERS, 5-117.
7. USE STANDARD STRENGTH PIPE EXCEPT AS NOTED.
8. USE CEMENT MORTAR OR "WEDGE-LOCK" OR "SPREAD-SEAL" FOR ALL F.P. JOINTS PER SPECS. SECT. M & N.
9. REFURFACE ALL TRENCH WITHIN PAVED AREA TO MEET L.A. COUNTY ROAD DEPT. OR CALIF. STATE HIGHWAY REQUIREMENTS IN ACCORDANCE WITH PERMITS.
10. ENCASE FOUR FEET OF SEWER AT POINTS OF INTERFERENCE WITH POLES, CASE III, 5-117.
11. HOUSE LATERALS TO BE CONSTRUCTED WITH INVERTS AT PROPERTY LINE FEET BELOW CURB GRADE EXCEPT AS NOTED.
12. ALL STRUCTURES SHALL BE BRICK SEWER STRUCTURES, 5-114, EXCEPT AS NOTED.
13. FOR ALLOWABLE LEAKAGE TEST USE FORMULA NO. 1, SPECS. SEC. 14.
14. MANHOLE TOPS IN UNIMPROVED RIGHTS-OF-WAY TO BE SIX INCHES ABOVE FINISHED GRADE.
15. THE CONTRACTOR SHALL NOTIFY THE CONSTRUCTION & STORM DRAIN DIVISION BY TELEPHONE, MADISON 5-417, EXT. 32, AT LEAST TWENTY-FOUR HOURS BEFORE STARTING ANY WORK UNDER THIS CONTRACT.

No CHARGE FOR CONNECTIONS  
*W. H. Hickland 1-22-60*

PROFILE ALIGNMENT AND GRADE OF P.C. 5405  
 SANITARY SEWERS PAGE 1  
 TO BE CONSTRUCTED IN

1<sup>ST</sup> ALLEY EAST OF GARFIELD AVE.

PRIVATE CONTRACT NO. 5405

W.S. 32  
 2 SHEETS; 3 PAGES  
 SCALE: FEET 1"=4' HORIZ. 1"=4' JAN. 1960  
 PREPARED IN THE OFFICES OF  
 OLSON SURVEYING SERVICE  
 BY *Carl Olson*  
 REG. C. E. NO. 7820

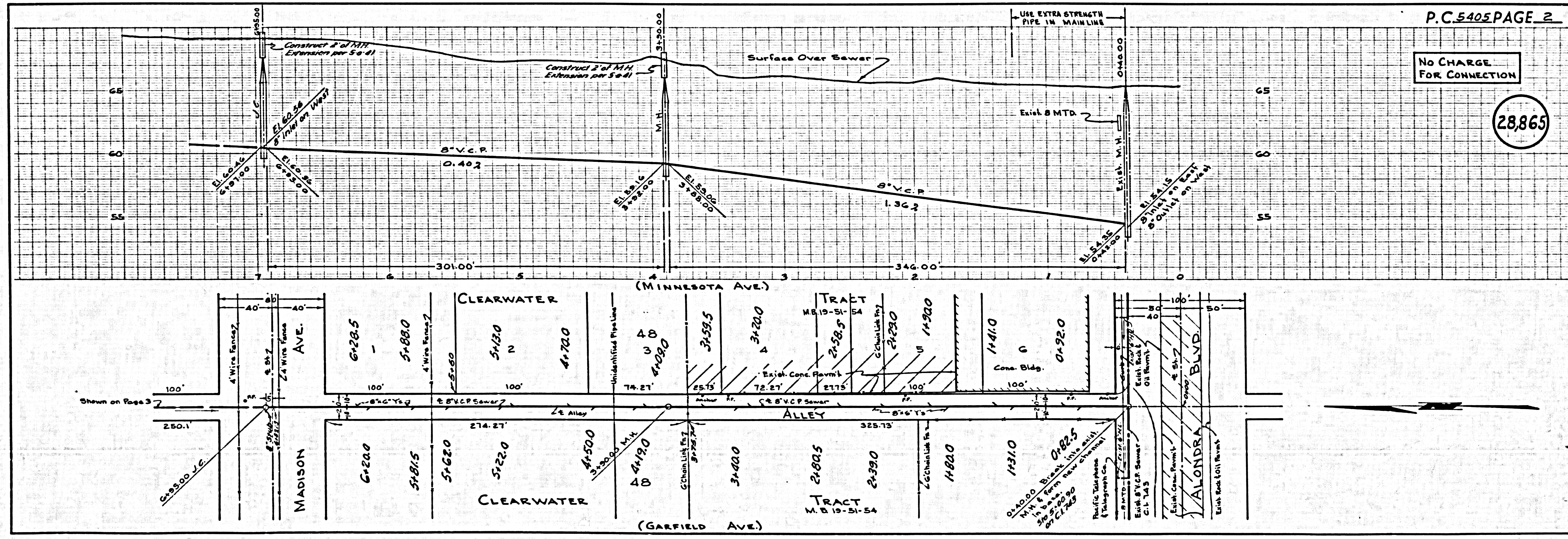
28,864

FOR LEGEND SEE PLAN NO. S-A-44

NOTE: GRADES TO WHICH THIS IMPROVEMENT IS TO BE CONSTRUCTED ARE SHOWN ON PLANS AND PROFILES. GRADE POINTS FOR TOP OF CURB, CENTER LINE OF STREETS, OR CENTER LINE OF ALLEYS ARE SHOWN BY CIRCLES ON PROFILES. AT ALL POINTS BETWEEN DESIGNATED POINTS THE GRADE SHALL BE ESTABLISHED SO AS TO CONFORM TO A STRAIGHT LINE DRAWN BETWEEN SAID DESIGNATED POINTS. ELEVATIONS ARE IN FEET ABOVE U.S.C. & G.S. SEA LEVEL DATUM OF 1929. THIS DRAWING AND THE DATA HEREON ARE HEREBY MADE A PART OF THE SPECIFICATIONS. WORK SHALL BE CONSTRUCTED ACCORDING TO SPECIFICATIONS ON FILE IN THE OFFICE OF THE CITY ENGINEER AND SHALL BE PROSECUTED ONLY IN THE PRESENCE OF THE CITY ENGINEER. BEFORE WORK CAN BE STARTED, THE CONTRACTOR MUST OBTAIN A PERMIT TO EXCAVATE IN CITY STREETS FROM THE L.A. COUNTY ROAD DEPT., DISTRICT OFFICE NO. 4, AND MAKE A DEPOSIT WITH THE CITY OF PARAMOUNT, 12-602 PARAMOUNT BLVD., PARAMOUNT, SUFFICIENT TO COVER THE COST OF CONSTRUCTION INSPECTION AND RECORD PLANS. APPROVAL OF THIS PLAN BY THE CITY OF PARAMOUNT DOES NOT CONSTITUTE A REPRESENTATION AS TO THE ACCURACY OF THE LOCATION OF OR THE EXISTENCE OR NON-EXISTENCE OF ANY UNDERGROUND UTILITY PIPE, OR STRUCTURE WITHIN THE LIMITS OF THIS PROJECT. THIS NOTE APPLIES TO ALL PAGES. IF WORK IS TO BE DONE IN A STATE HIGHWAY, A PERMIT MUST BE OBTAINED FROM THE STATE OF CALIFORNIA, DIVISION OF HIGHWAYS, 126 SOUTH SPRING STREET.

CITY OF PARAMOUNT, CALIFORNIA  
 APPROVED, JOHN A. LAMBIE CITY ENGINEER APPROVED, C.E. COMPTON, CHIEF ENGINEER  
 BY *C.E. Compton* ASSISTANT SANITATION ENGINEER  
 CHECKED BY *W.K. Onda* 1-1-60  
 OFFICE OF CITY ENGINEER, REG. C. E. NO. 3496

Submitted By *John L. Eaton* 1-22-60  
 J. Carrillo Regional Engineer, Reg. C.E. No. 3871



P.C. 5405 PAGE 2

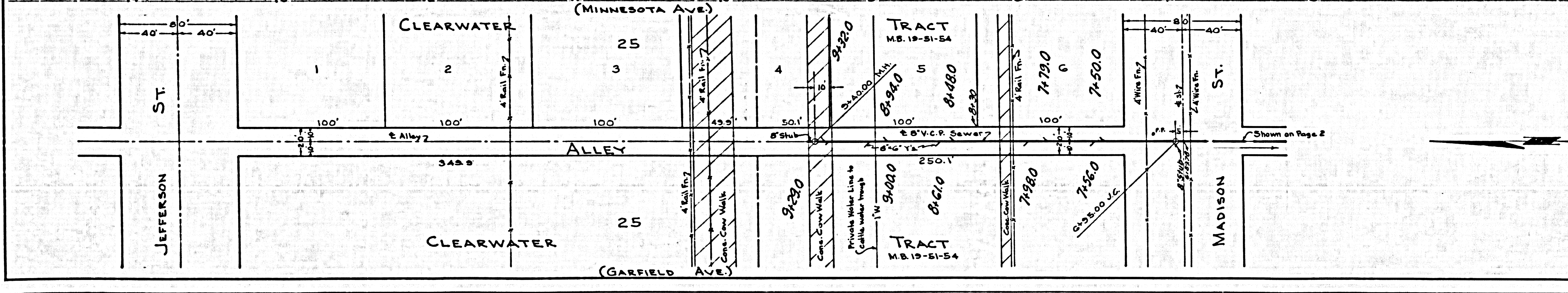
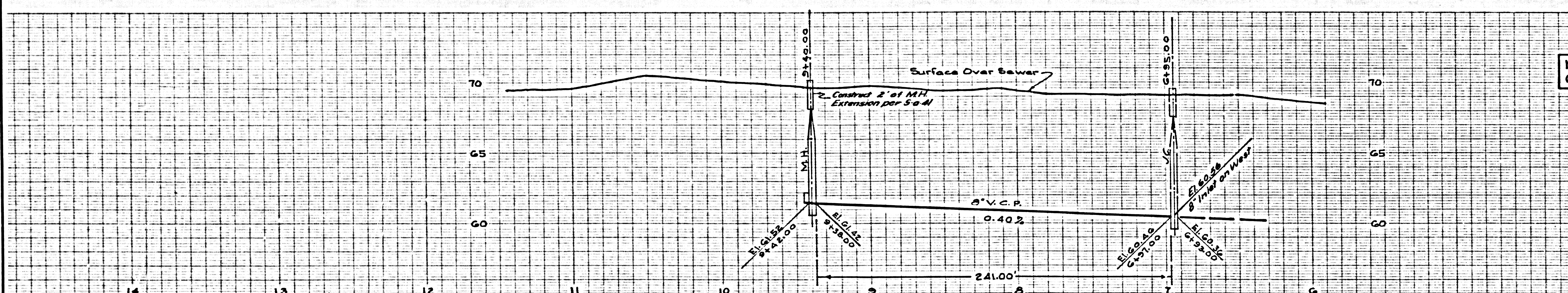
No CHARGE FOR CONNECTION

28,865



NO CHARGE FOR CONNECTIONS

28866



U.S.G.P. 1960 10' X 10' GRID PLANT SYMBOLS SHEET NO. 1