

BENCH MARK:
 SY 4042 ELEV. 17.836 (1955 ADJ) L.A. COUNTY ROAD DEPARTMENT MONUMENT IN MAC. PAVEMENT 6' 3" E. OF E. OF LUTWELER AVE. AND 18' 2" W. OF TELE. POLE N° 5651-1. 236' 2" SOUTH OF E. OF IMPERIAL HIGHWAY IN CASING WITH COVER. LA MIRADA QUAD.

NORWALK BLDG. DIST. NO. 4.2

PROFILE ALIGNMENT AND GRADE OF **P.C. 5409**
SANITARY SEWERS PAGE 1
 TO BE CONSTRUCTED IN

TRACT No. 24960

PRIVATE CONTRACT NO. 5409

W.S. 34

2 SHEETS; 3 PAGES

SCALE: VERT. 1" = 4'
 HORIZ. 1" = 40' JAN. 1960

PREPARED IN THE OFFICES OF

MINTIRE & QUIROS, INC.

By: *John M. Quiros* 1/13/60
 REG. C. E. NO. 2548

FOR LEGEND SEE PLAN NO. S-A-64

29,686

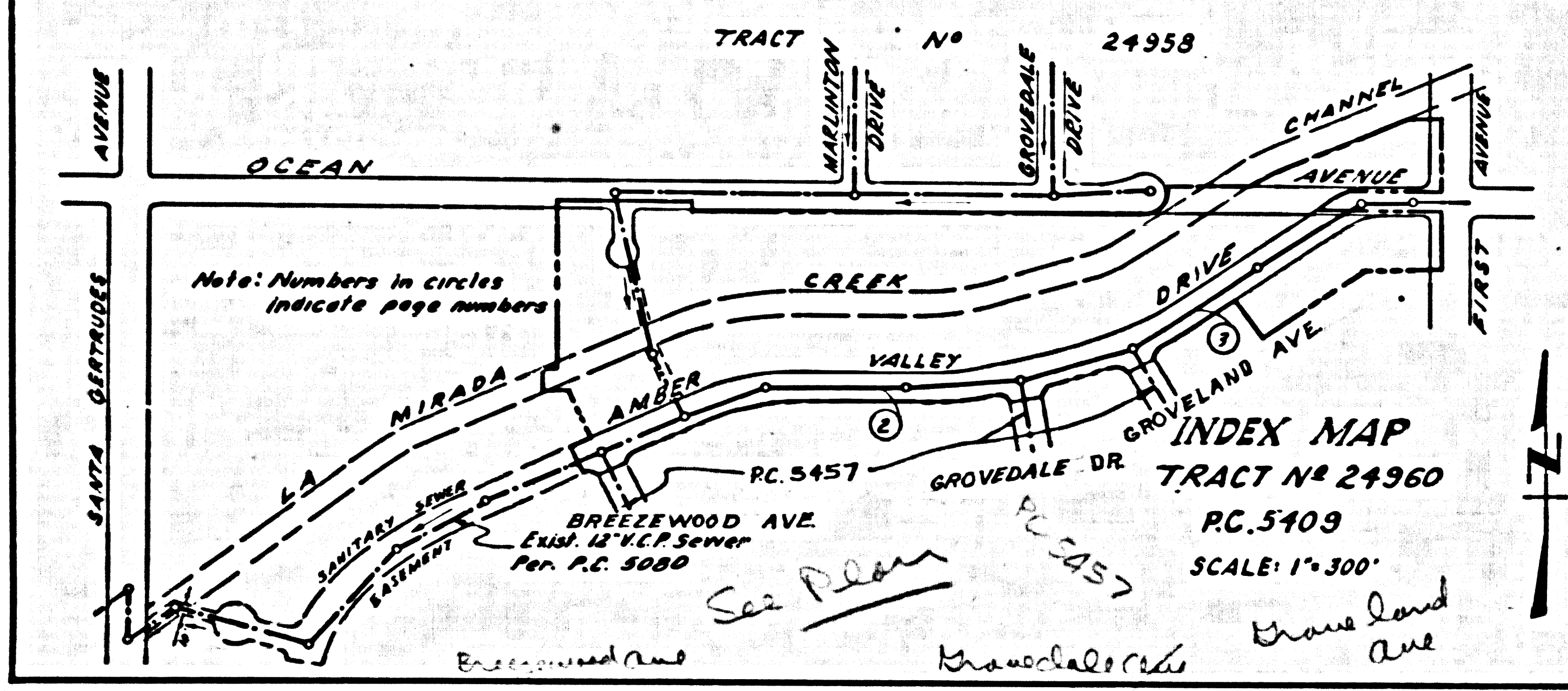
NOTES:

1. PROVIDE STAKES ON THE PROPERTY LINE OR PROPERTY LINES PRODUCED AT RIGHT ANGLES TO THE SEWER LINE AT THE CENTER LINE OF EACH MANHOLE.
2. NO REPRESENTATIVE OF THE COUNTY ENGINEER WILL SURVEY OR LAY OUT ANY PORTION OF THE WORK.
3. THE OWNER OR HIS AUTHORIZED REPRESENTATIVE SHALL FURNISH THE COUNTY ENGINEER WITH GRADE SHEETS AND STATIONING FOR ALL HOUSE LATERALS AND Y BRANCHES AND SHALL PROVIDE STAKES FOR THEM AT THEIR PROPER LOCATIONS WITH STATIONING PLAINLY MARKED. ANY CHANGE IN LOCATION SHALL BE REQUESTED IN WRITING BY THE OWNER OR HIS REPRESENTATIVE.
4. THE PRIVATE ENGINEER SHALL FURNISH THE HOUSE LATERAL DEPTH AT THE PROPERTY LINE BELOW THE TOP OF CURB ELEVATION FOR EACH HOUSE LATERAL ON THE GRADE SHEET.
5. NO REVISIONS SHALL BE MADE IN THESE PLANS WITHOUT THE APPROVAL OF THE COUNTY ENGINEER.
6. USE STANDARD MANHOLE FRAMES AND COVERS, 5-117, 24" DIA. 15" HIGH.
7. USE STANDARD STRENGTH PIPE EXCEPT AS NOTED.
8. USE CEMENT MORTAR OR "WEDGE-LOCK" OR "SPREAD-SEAL" FOR ALL F.C.P. JOINTS PER SPECS. SECS. M & N.
9. RESURFACE ALL TRENCH WITHIN PAVED AREA TO MEET L.A. COUNTY ROAD DEPT. OR CALIF. STATE HIGHWAY REQUIREMENTS IN ACCORDANCE WITH PERMITS.
10. ENCASE FOUR FEET OF SEWER AT POINTS OF INTERFERENCE WITH POLES, OR WHEN COVER IS LESS THAN FOUR FEET, PER S-117, 24" DIA. 15" HIGH.
11. HOUSE LATERALS TO BE CONSTRUCTED WITH INVERTS AT PROPERTY LINE... FEET BELOW CURB GRADE EXCEPT AS NOTED.
12. ALL STRUCTURES SHALL BE BRICK SEWER STRUCTURES, 5-104, 24" DIA. 15" HIGH.
13. FOR ALLOWABLE LEAKAGE TEST USE FORMULA NO. 1... SPECS. SEC. 54.
14. REVISIONS TO THESE PLANS SHALL BE MADE BY THE ENGINEER AND SHALL BE INDICATED BY A CIRCLE WITH THE NUMBER OF THE REVISION.
15. THE CONTRACTOR SHALL NOTIFY THE CONSTRUCTION & STORM DRAIN DIVISION BY TELEPHONE, MADISON 5-4171, EXT. 34, AT LEAST TWENTY-FOUR HOURS BEFORE STARTING ANY WORK UNDER THIS CONTRACT.
16. THE CONTRACTOR SHALL SATISFY HIMSELF OF ALL SUBSTRUCTURES AND SHALL BE RESPONSIBLE FOR THEIR LOCATION AND MAINTENANCE.
17. NO CONSTRUCTION WILL BE PERMITTED IN FILLED AREAS UNLESS ACCEPTABLE CERTIFICATION IS SUBMITTED TO THE CONSTRUCTION DIVISION OF THE COUNTY ENGINEER'S DEPT. THAT COMPACTION IS GREATER THAN 85%. IF COMPACTOR IS GREATER THAN 30%, CRADLING OR SPECIAL M.H. BASES ARE NOT REQUIRED. HOWEVER, JOINT COMPACTOR MUST BE SUBSTITUTED FOR CEMENT MORTAR FOR ALL JOINTS IN FILLED AREA. IF COMPACTOR IS LESS THAN 80%, THE SEWER MUST BE CRADLED AS SHOWN ON PLANS (PER. S-117-1-60).
18. STANDARD SPECIFICATIONS DATED JAN. 1, 1958, APPLY IN THE CONSTRUCTION OF THIS PROJECT.

Revision:
 Change location of Main Line
 From Sta. 29149 to Sta. 29151
John L. Estor 5-28-60
 Los Angeles Regional Engineer R.E. 3871

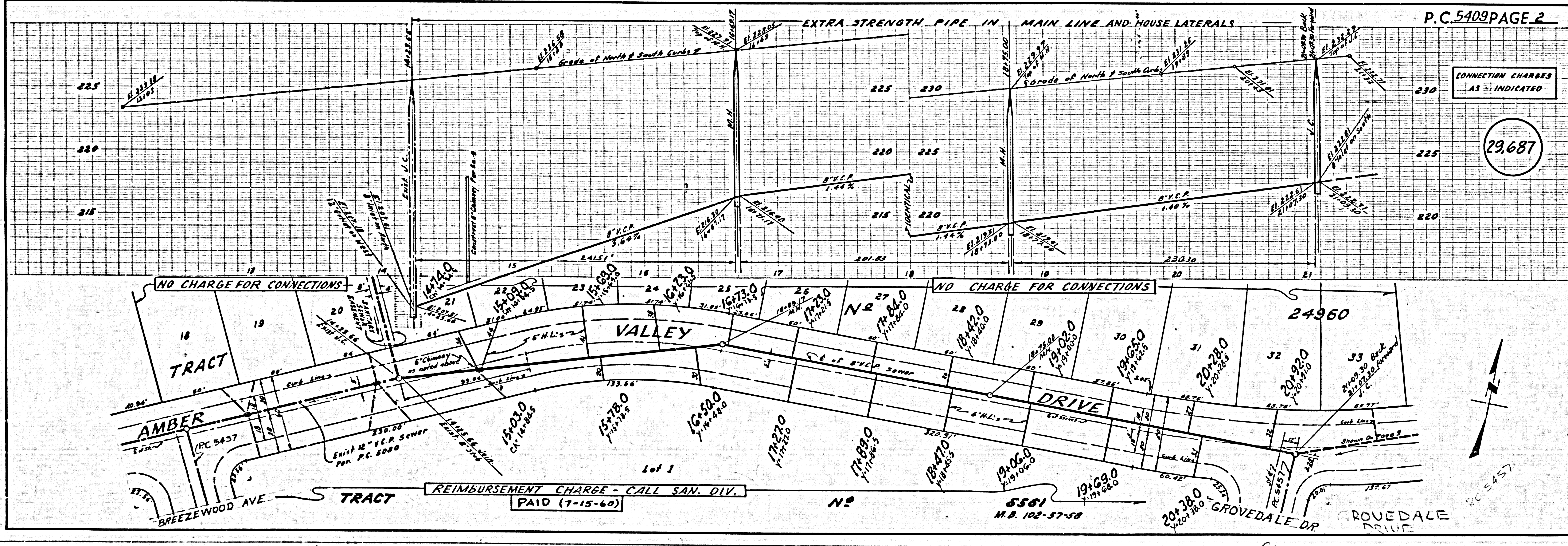
LOTS 1 THRU 17
 SERVED BY RC. 5080

CONNECTION CHARGE
 AS INDICATED
R. Quiros



NOTES:
 GRADES TO WHICH THIS IMPROVEMENT IS TO BE CONSTRUCTED ARE SHOWN ON PLANS AND PROFILES. GRADE POINTS FOR TOP OF CURB, CENTER LINE OF STREETS OR CENTER LINE OF ALLEYS ARE SHOWN BY CIRCLES ON PROFILES. AT ALL POINTS BETWEEN DESIGNATED POINTS THE GRADE SHALL BE ESTABLISHED SO AS TO CONFORM TO A STRAIGHT LINE DRAWN BETWEEN SAID DESIGNATED POINTS.
 ELEVATIONS ARE IN FEET ABOVE U.S.C. & G.S. SEA LEVEL DATUM OF 1929.
 THIS DRAWING AND THE DATA HEREON ARE HEREBY MADE A PART OF THE SPECIFICATIONS. BEFORE WORK CAN BE STARTED, THE CONTRACTOR MUST OBTAIN A PERMIT TO EXCAVATE IN COUNTY STREETS FROM THE L.A. COUNTY ROAD DEPT. DISTRICT OFFICE NO. 10... AND PAY A FEE WITH THE COUNTY ENGINEER ROOM 324 FARM AVENUE BUILDING, 248 SO. INDIANWAY SUFFICIENT TO COVER THE COST OF CONSTRUCTION INSPECTION AND RECORD PLANS.
 APPROVAL OF THIS PLAN BY THE COUNTY OF LOS ANGELES DOES NOT CONSTITUTE A REPRESENTATION AS TO THE ACCURACY OF THE LOCATION OF OR THE EXISTENCE OR NON-EXISTENCE OF ANY UNDERGROUND UTILITY PIPE, OR STRUCTURE WITHIN THE LIMITS OF THIS PROJECT. THIS NOTE APPLIES TO ALL PAGES.
 IF WORK IS TO BE DONE IN A STATE HIGHWAY, A PERMIT MUST BE OBTAINED FROM THE STATE OF CALIFORNIA, DIVISION OF HIGHWAYS, 126 SOUTH SPRING STREET.

COUNTY OF LOS ANGELES, CALIFORNIA
 APPROVED, JOHN A. LAMBIE, COUNTY ENGINEER APPROVED, C.R. COMPTON, CHIEF ENGINEER
 CO. SAN. DIST. NO. 18
 BY: *C.E. Bandy* ASST. SANITATION ENGINEER BY: *J.L. Foster* OFFICE ENGINEER
 CHECKED BY: *J.K. Oude* 3-7-60
 OFFICE OF THE COUNTY ENGINEER, REG. C. E. NO. 3466
 Submitted By: *John L. Estor* 3-7-60
 Los Angeles Regional Engineer R.E. 3871

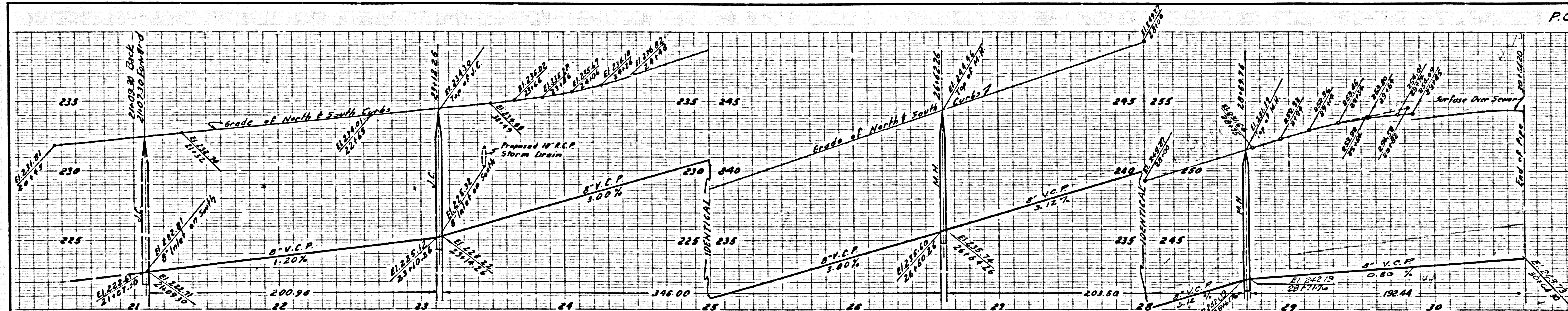


P.C. 5409 PAGE 2

CONNECTION CHARGES AS INDICATED

29,687

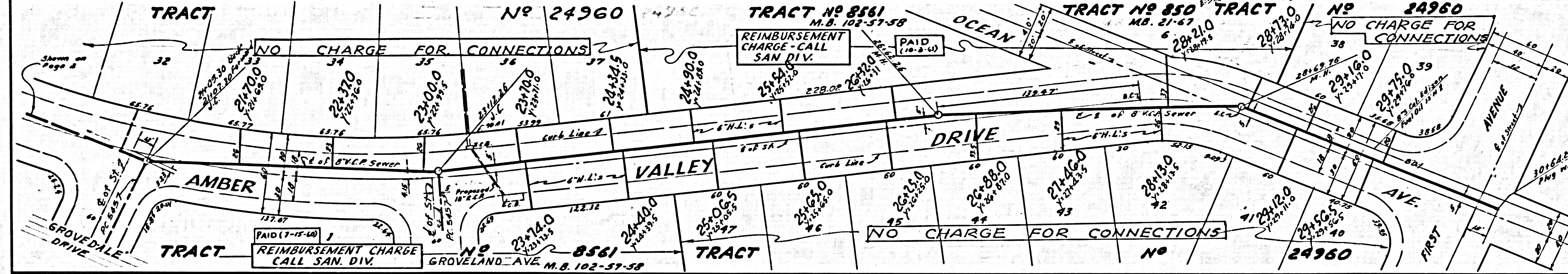
Breezewood Avenue



CONNECTION CHARGE AS INDICATED

29,688

Revision Change location of Main Line from Sta. 28+63 to Sta. 30+61



GROVE DALE DRIVE P.C. 5457

GROVELAND AVENUE P.C. 5451