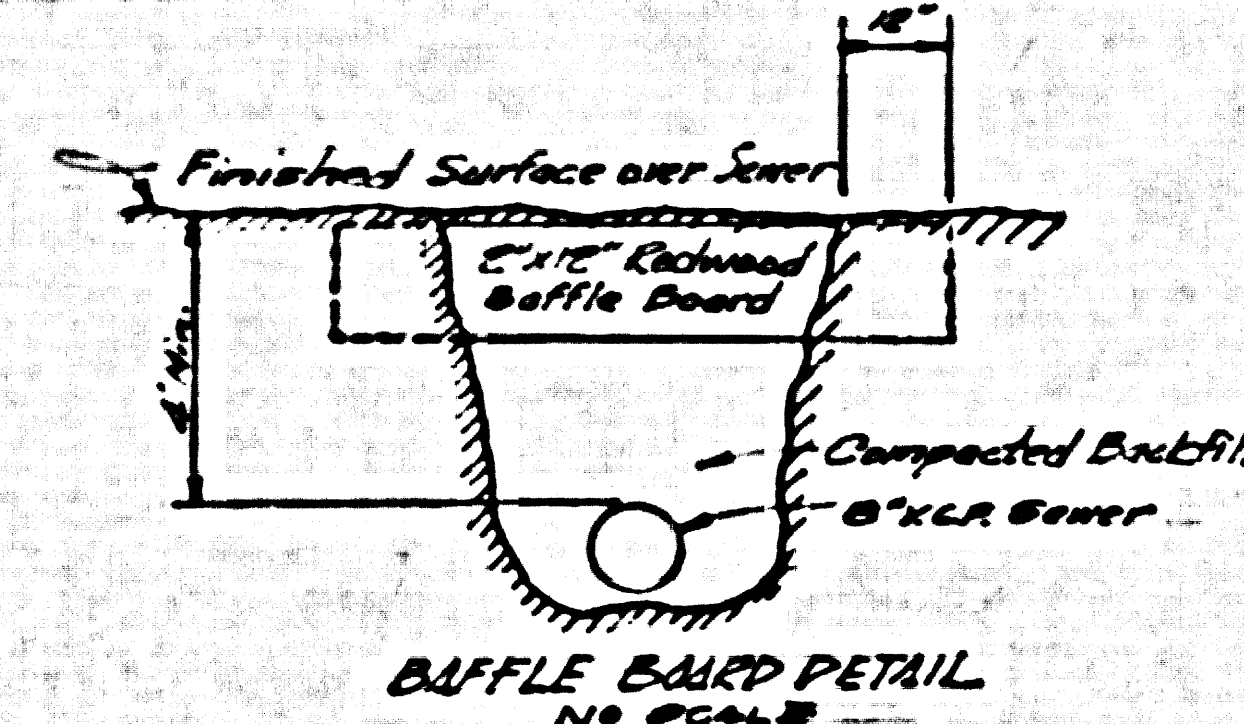


County Surveyors 3rd U.S.C.G.S. Std. Disc
 Stamped Q-786-1946, set flush with
 ground 452' North of & of Palos Verdes
 Drive North 474' E. of & of Narbonne
 Ave. Elev. 353.518

County Surveyor B.M. 36-2, County
 Precise Survey 1953 adj. Elev. 353.593
 Add 0.063 to all elevs. shown hereon
 to agree with 1953 adjustment.

Notes:
 1. Each end of baffle board will
 extend and set in accordance
 to plan.
 2. The upper layer of backfill, to
 be 18" minimum top soil. The soil
 shall be tamped in place and
 placed with sand and top
 grass seed and suitable
 fertilizer until growth is restored.
 3. Baffle boards shall be spaced so that
 the top of the lower board shall be
 level with the bottom of the next
 higher board.



INDEX MAP
 TRACT No. 19683
 SCALE: 1"=300'
 P.C. 5412

NO CHARGE FOR
 CONNECTIONS
 Arthur B. Brady

Revision:
 Added a sewer from
 Ironwood St. to Montemar
 Ave Drive. Page 2, Sec. B
 Approved: Edward J. Smith
 12-18-60 RE. N. 7267

LOMITA BLDG. DIST. NO. 71

- NOTES:
1. PROVIDE STAKES ON THE PROPERTY LINE OR PROPERTY LINES PRODUCED AT RIGHT ANGLES TO THE SEWER LINE AT THE CENTER LINE OF EACH MANHOLE.
 2. NO REPRESENTATIVE OF THE COUNTY ENGINEER WILL SURVEY OR LAY OUT ANY PORTION OF THE WORK.
 3. THE OWNER OR HIS AUTHORIZED REPRESENTATIVE SHALL FURNISH THE COUNTY ENGINEER WITH GRADE SHEETS AND STATIONING FOR ALL HOUSE LATERALS AND Y BRANCHES AND SHALL PROVIDE STAKES FOR THEM AT THEIR PROPER LOCATIONS WITH STATIONING PLAINLY MARKED. ANY CHANGE IN LOCATION SHALL BE REQUESTED IN WRITING BY THE OWNER OR HIS REPRESENTATIVE.
 4. THE COUNTY ENGINEER SHALL FURNISH THE HOUSE LATERAL MAPS AT THE PROPERTY LINE BELOW THE TOP OF CURB ELEVATION FOR EACH HOUSE LATERAL ON THE GRADE SHEET.
 5. NO REVISIONS SHALL BE MADE IN THESE PLANS WITHOUT THE APPROVAL OF THE COUNTY ENGINEER.
 6. USE STANDARD MANHOLE FRAMES AND COVERS, S-117, EXCEPT AS NOTED.
 7. USE STANDARD MANHOLE PIPE EXCEPT AS NOTED.
 8. USE CEMENT MORTAR OR "WEDGE-LOCK" OR "SPREAD-SEAL" FOR ALL V.C.P. JOINTS PER SPECS., SECS. 36 & 41.
 9. RESURFACE ALL TRENCH WITHIN PAVED AREA TO MEET L.A. COUNTY ROAD DEPT. OR CALIF. STATE HIGHWAY REQUIREMENTS IN ACCORDANCE WITH PERMITS.
 10. ENCASE FOUR FEET OF SEWER AT POINTS OF INTERFERENCE WITH POLES, CASE III, S-117E.
 11. HOUSE LATERALS TO BE CONSTRUCTED WITH INVERTS AT PROPERTY LINE 6" FEET BELOW CURB GRADE EXCEPT AS NOTED.
 12. ALL STRUCTURES SHALL BE BUILT IN ACCORDANCE WITH SPECS., S-117, EXCEPT AS NOTED.
 13. FOR ALLOWABLE SEALAGE TEST USE FORMULA NO. 1, SPECS., SEC. 34.
 14. MANHOLE TOBS IN UNIMPROVED RIGHTS-OF-WAY TO BE SIX INCHES ABOVE FINISHED GRADE.
 15. THE CONTRACTOR SHALL NOTIFY THE CONSTRUCTION & STORM DRAIN DIVISION BY TELEPHONE, RADIO OR 9-472, EXT. 742, AT LEAST TWENTY-FOUR HOURS BEFORE STARTING ANY WORK UNDER THIS CONTRACT.
 16. STANDARD SPECIFICATIONS DATED JANUARY 1, 1960 APPLY IN THE CONSTRUCTION OF THIS PROJECT.
 17. NO CONSTRUCTION WILL BE PERMITTED IN FILLED AREAS UNLESS ACCEPTABLE CERTIFICATION IS SUBMITTED TO THE CONSTRUCTION DIVISION OF THE COUNTY ENGINEER'S DEPARTMENT THAT COMPACTION IS GREATER THAN 80%.
 (a) IF COMPACTION IS LESS THAN 80%, THE SEWER MUST BE CAPED AS SHOWN ON PLAN.
 (c) IF COMPACTION IS GREATER THAN 80%, CRACKING AND SPECIAL MANHOLE SEALS ARE NOT REQUIRED, HOWEVER JOINT COMPOUND MUST BE SUBSTITUTED FOR CEMENT MORTAR FOR ALL JOINTS IN FILLED AREAS.

ENGINEERING SERVICE CORPORATION 1127 W. WASHINGTON BLVD. LOS ANGELES 15, CALIF. RI. 9-7281	
REVISIONS	TRACED BY G.F.-J.A.
	DES'G'D BY C.M.F.
	CK'D BY A.A.M.
	SUBMITTED 12-7-60
SUB STRUCTURES OK'D	
W. O. NO.	DWG. NO.
6681-127	JAN. 1960
DATE	SCALE
	AS NOTED
	1"=300'

PROFILE ALIGNMENT AND GRADE OF P.C. 5412
 SANITARY SEWERS PAGE 1
 TO BE CONSTRUCTED IN J.N. 0332.67

TRACT No. 19683

PRIVATE CONTRACT NO. 5412

W.S. 27

3 SHEETS; 10 PAGES

SCALE: 1"=30' JAN. 1960

PREPARED IN THE OFFICES OF
 ENGINEERING SERVICE CORPORATION

30,199

FOR LEGEND SEE PLAN NO. S-A-64

NOTES:
 GRADES TO WHICH THIS IMPROVEMENT IS TO BE CONSTRUCTED AS SHOWN ON PLANS AND PROFILES. GRADE POINTS FOR TOP OF CURBS, CENTER LINE OF STREETS, OR CENTER LINE OF ALLEYS ARE SHOWN BY CIRCLES ON PROFILES AT ALL POINTS BETWEEN DESIGNATED POINTS THE GRADE SHALL BE ESTABLISHED SO AS TO CONFORM TO A STRAIGHT LINE DRAWN BETWEEN SAID DESIGNATED POINTS.
 ELEVATIONS ARE IN FEET ABOVE U.S.C. & G.S. SEA LEVEL DATUM OF 1929.
 THIS DRAWING AND THE DATA HEREON ARE HEREBY MADE A PART OF THE SPECIFICATIONS.
 WORK SHALL BE CONSTRUCTED ACCORDING TO SPECIFICATIONS ON FILE IN THE OFFICE OF THE COUNTY ENGINEER AND SHALL BE PROSECUTED ONLY IN THE PRESENCE OF THE COUNTY ENGINEER.
 BEFORE WORK CAN BE STARTED THE CONTRACTOR MUST OBTAIN A PERMIT TO EXCAVATE IN COUNTY STREETS FROM THE L.A. COUNTY ROAD DEPT., DISTRICT OFFICE NO. 3, AND PAY A FEE TO THE COUNTY ENGINEER, ROOM 323 MAIN BARRACADE BUILDING, 233 SO. BROADWAY SUFFICIENT TO COVER THE COST OF CONSTRUCTION INSPECTION AND RECORD PLANS.
 THE APPROVAL OF THIS PLAN BY THE COUNTY OF LOS ANGELES DOES NOT CONSTITUTE A REPRESENTATION AS TO THE ACCURACY OF THE LOCATION OR THE EXISTENCE OR NON-EXISTENCE OF ANY UNDERGROUND UTILITY PIPE, OR STRUCTURE WITHIN THE LIMITS OF THIS PROJECT. THIS NOTE APPLIES TO ALL PAGES.
 IF WORK IS TO BE DONE IN A STATE HIGHWAY, A PERMIT MUST BE OBTAINED FROM THE STATE OF CALIFORNIA, DIVISION OF HIGHWAYS, 138 SOUTH SPRING STREET.

COUNTY OF LOS ANGELES, CALIFORNIA

APPROVED, JOHN A. LAMBE, COUNTY ENGINEER

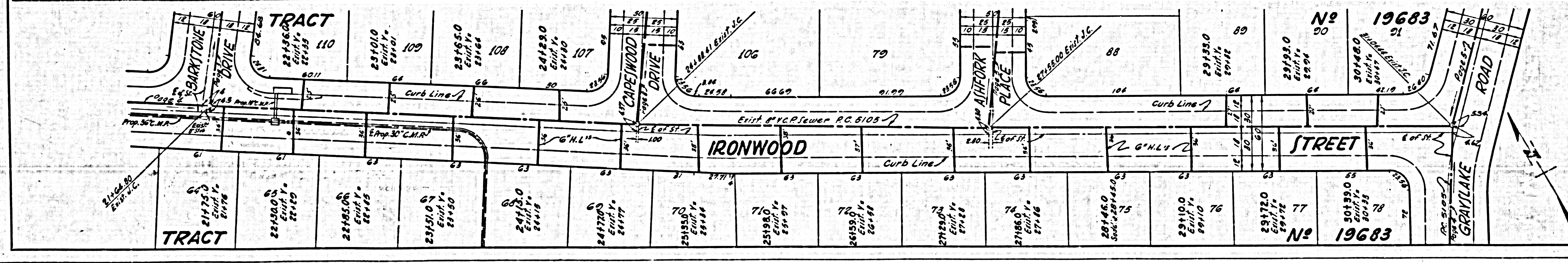
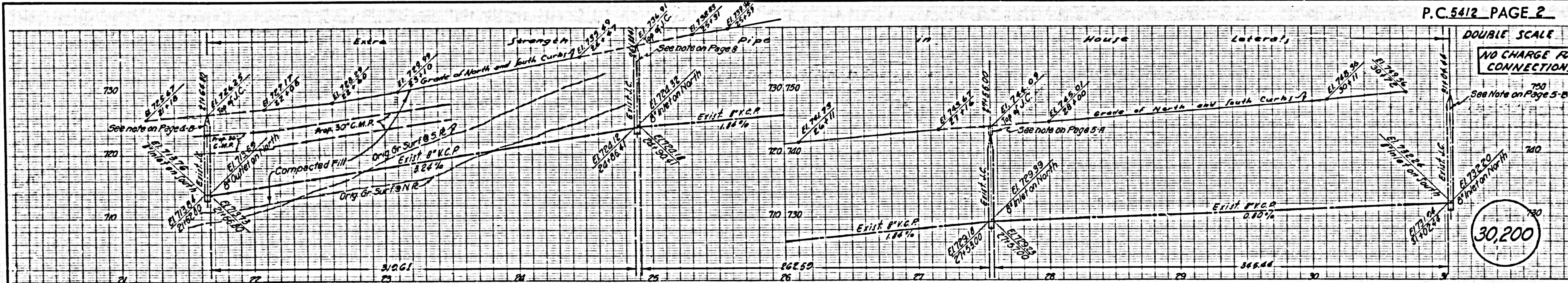
APPROVED, C.E. COMPTON, CHIEF ENGINEER

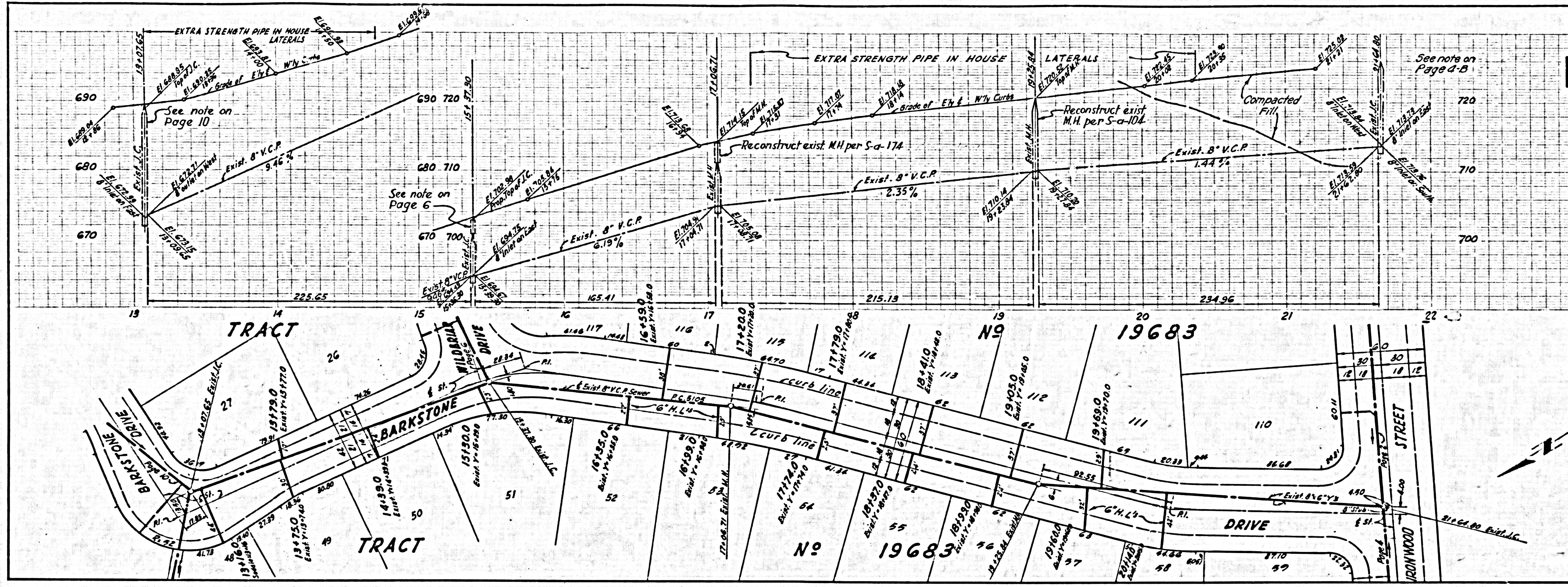
BY *J. H. Hughes* ASSESSOR ENGINEER

BY *M. J. ...* OFFICE ENGINEER

CHECKED BY *R. K. Wade* 6-15-60

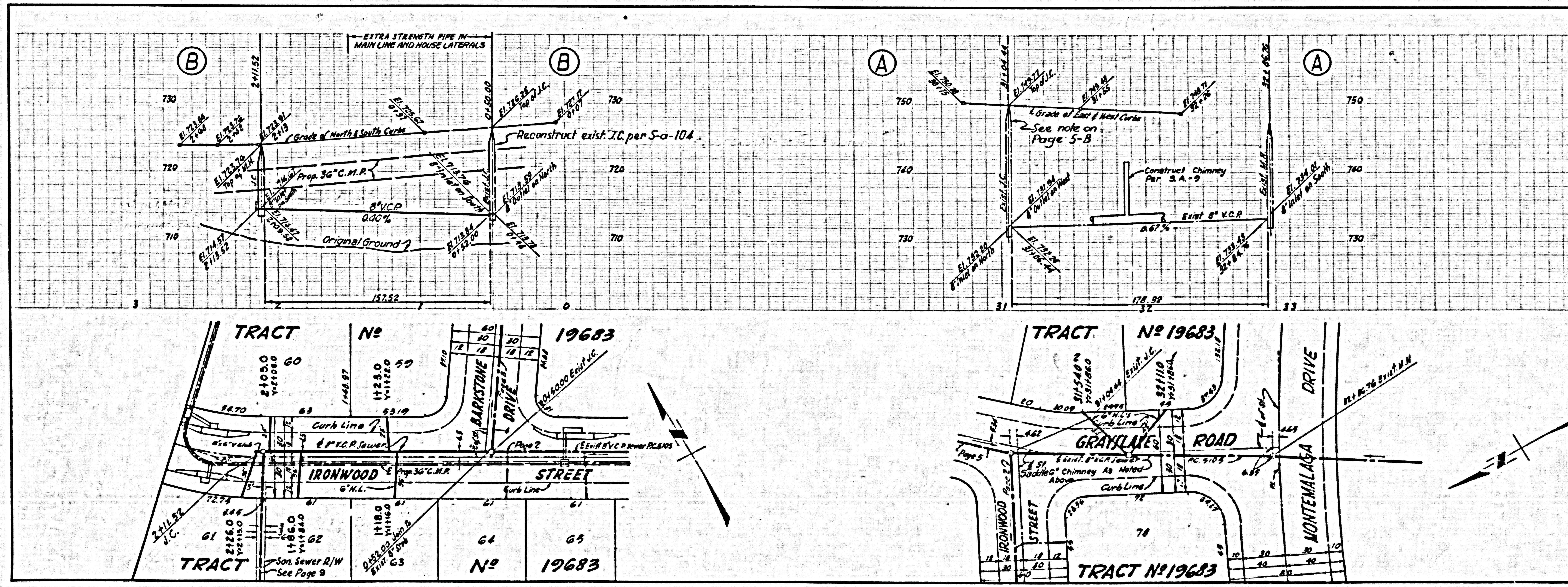
SUBMITTED BY *Ed C. ...* PALMS VERDES-CENTINELA VALLEY REGIONAL ENGINEER





PC5412 PAGE 3
 DOUBLE SCALE
 NO CHARGE FOR CONNECTION

30,201

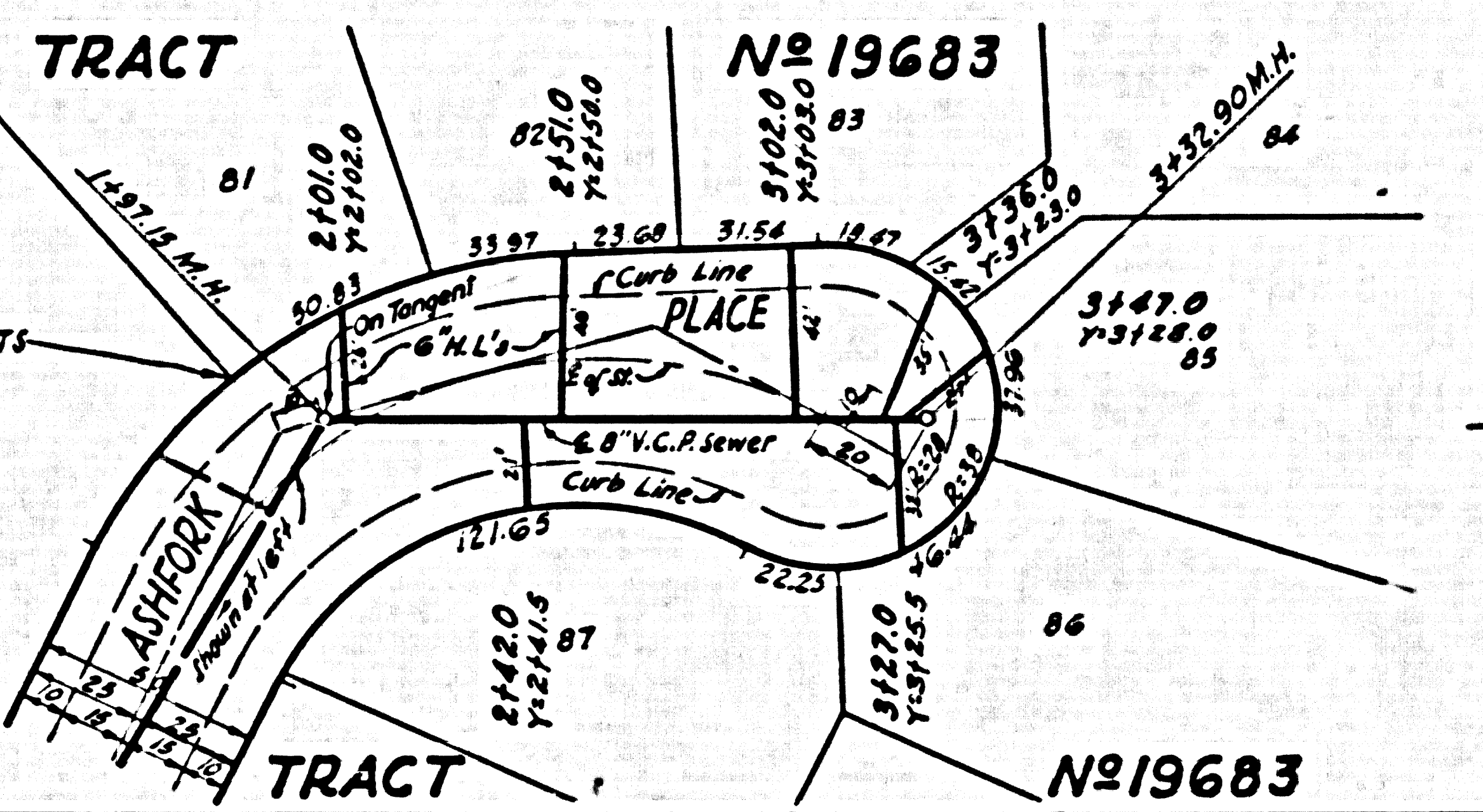
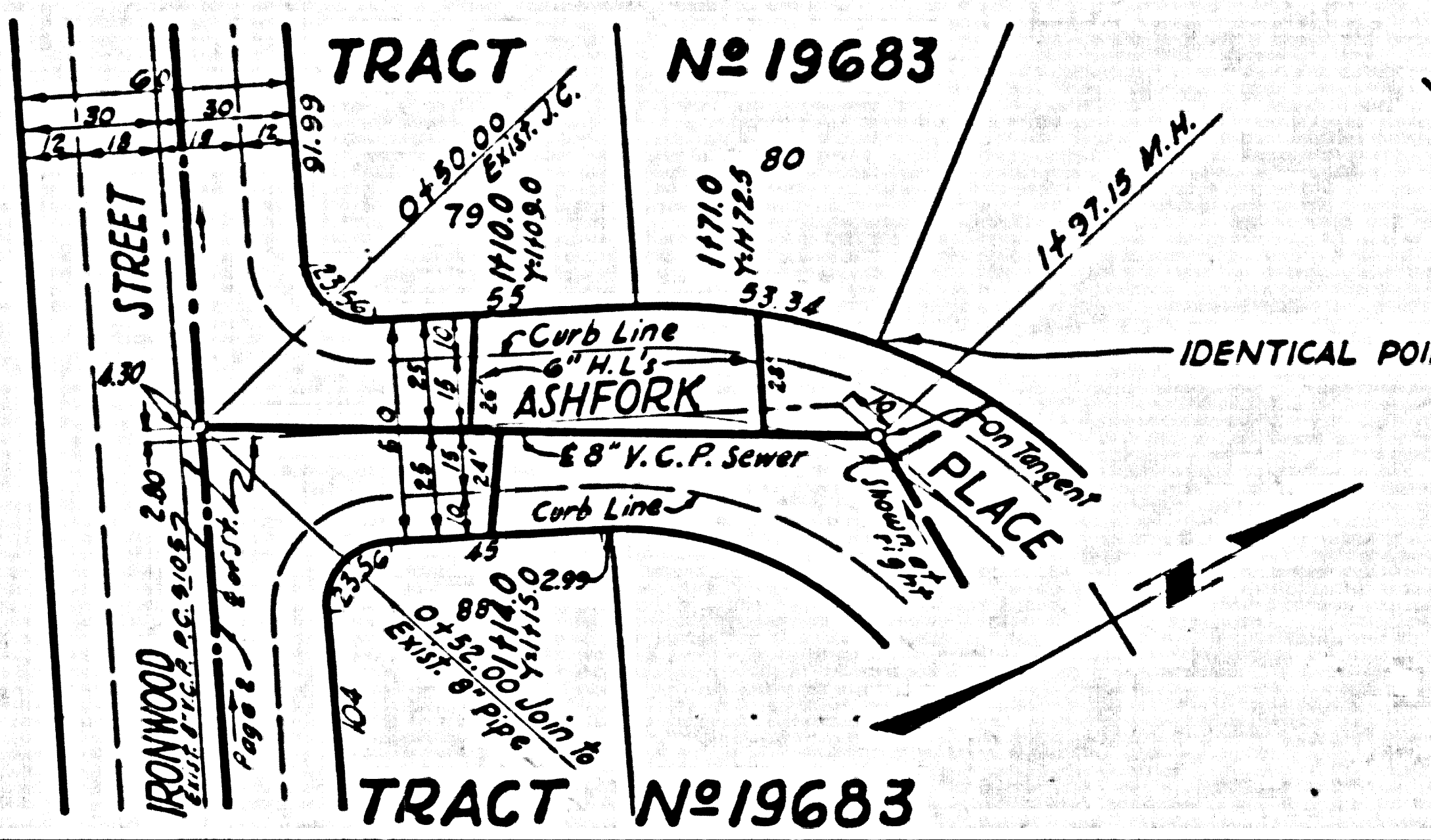
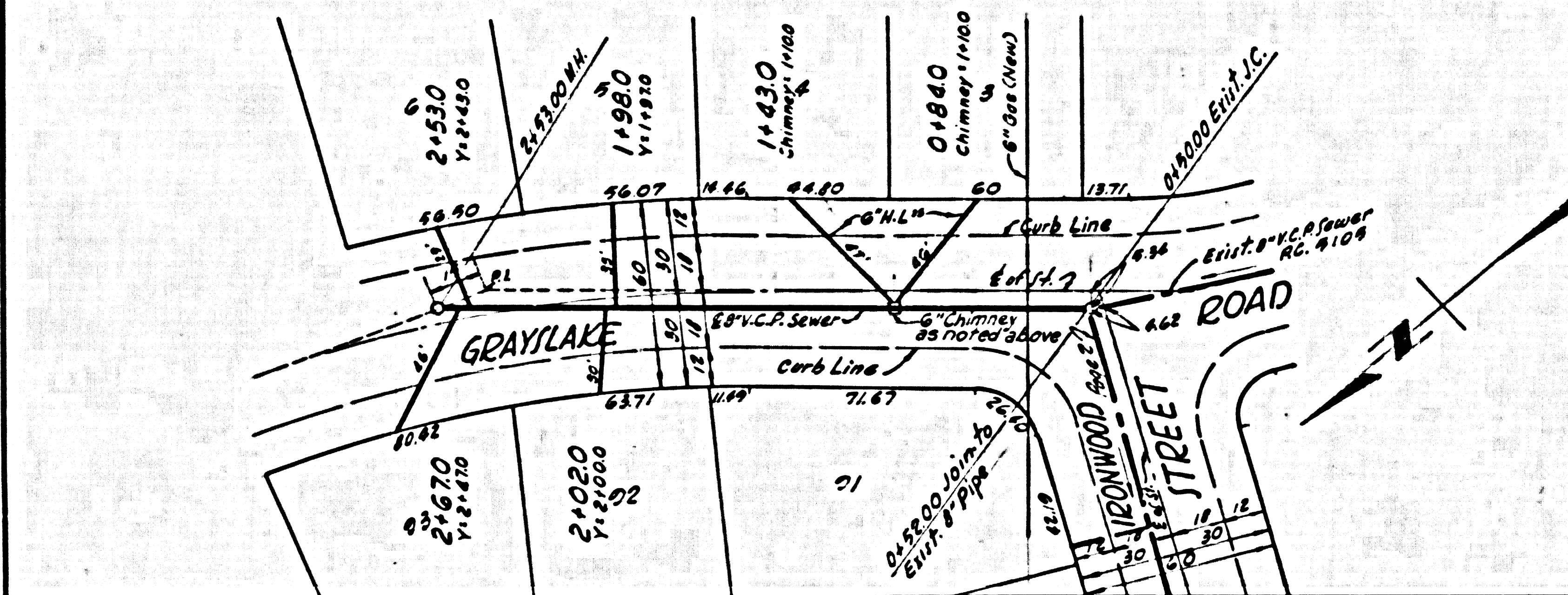
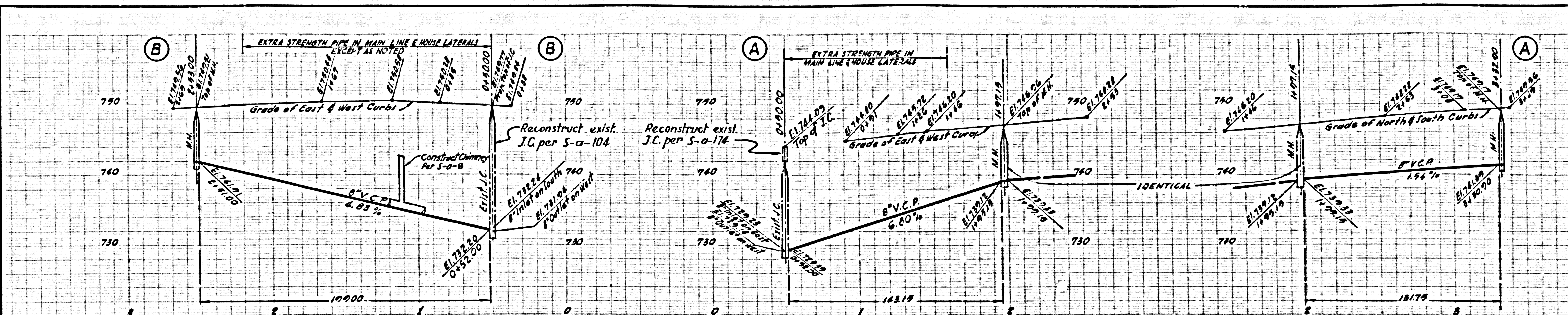


PC5412 PAGE 4
 DOUBLE SCALE
 NO CHARGE FOR CONNECTION

30,202

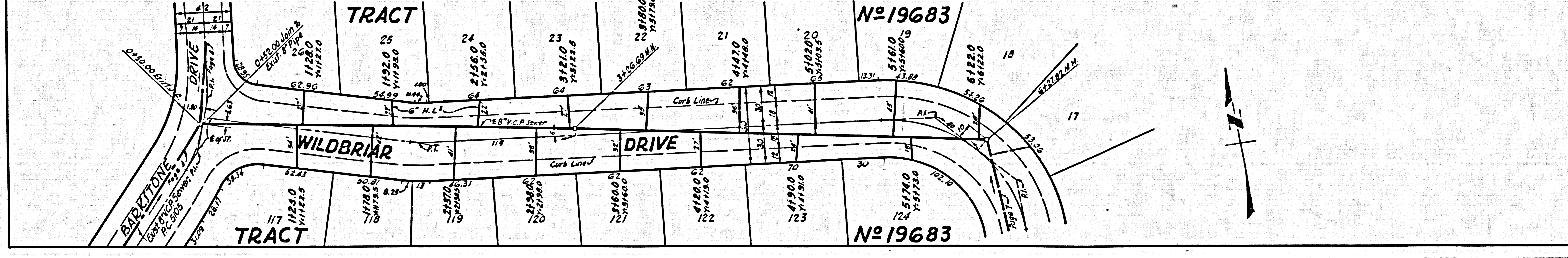
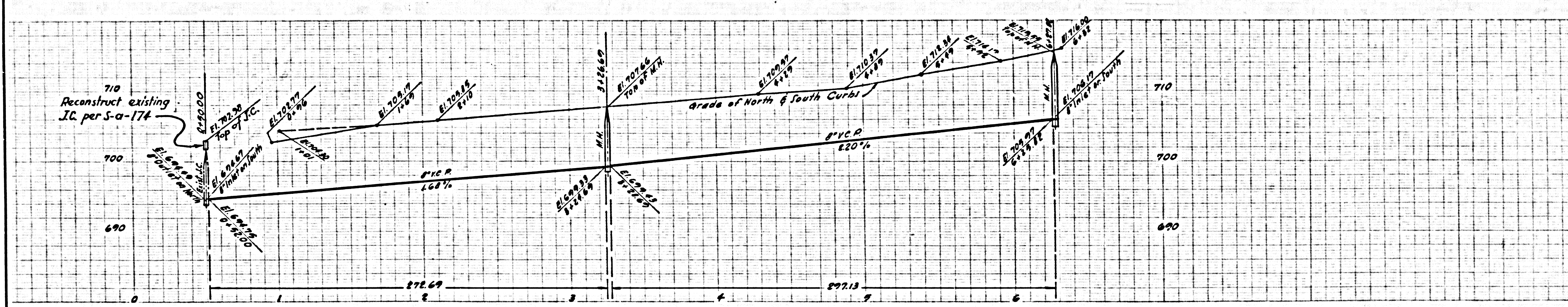
DOUBLE SCALE
NO CHARGE FOR
CONNECTIONS

30,203



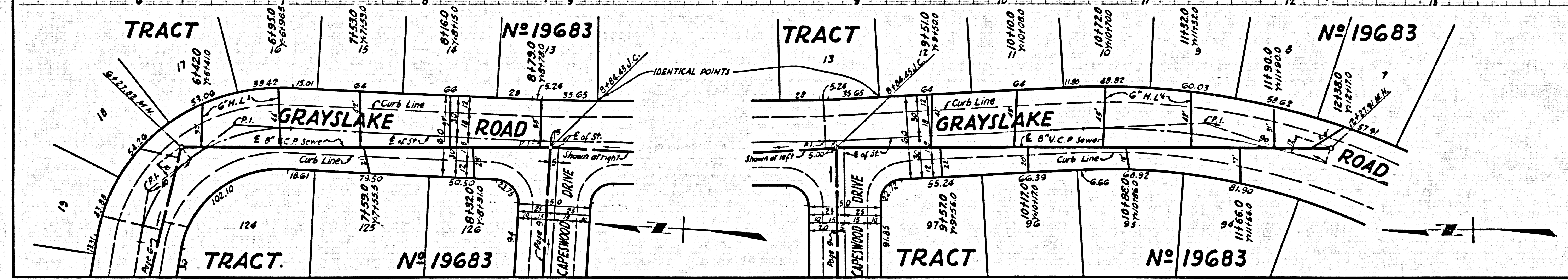
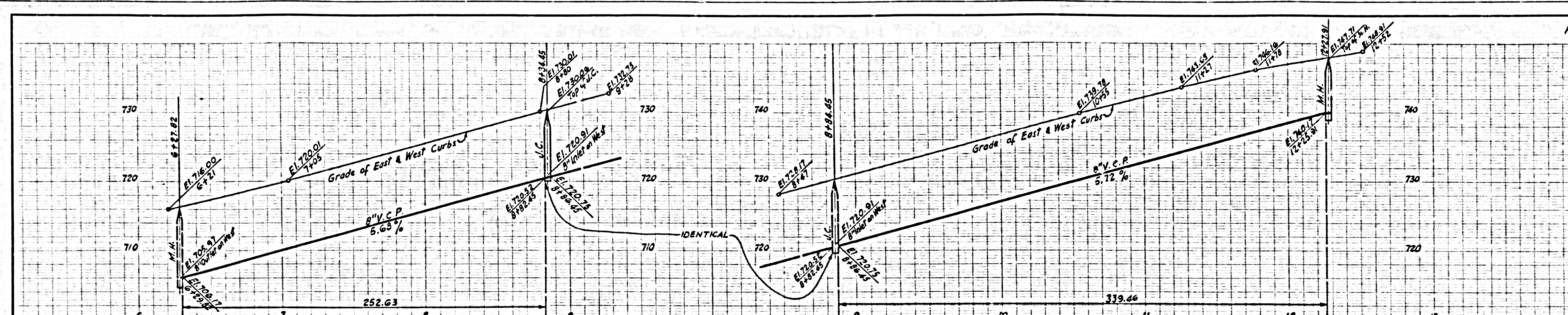
DOUBLE SCALE
NO CHARGE FOR
CONNECTIONS

30,204



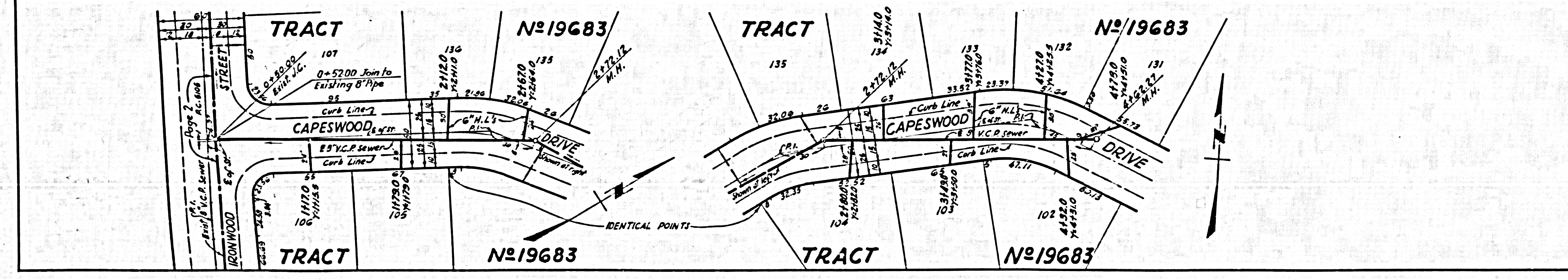
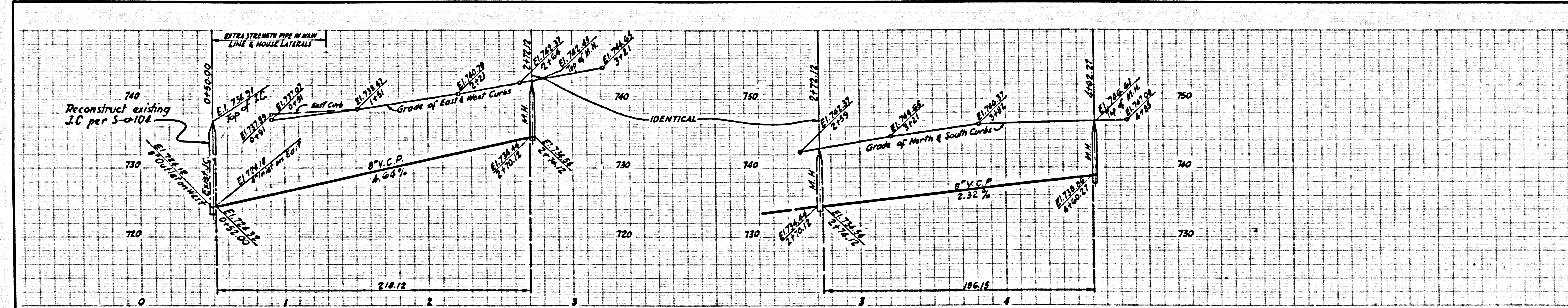
DOUBLE SCALE

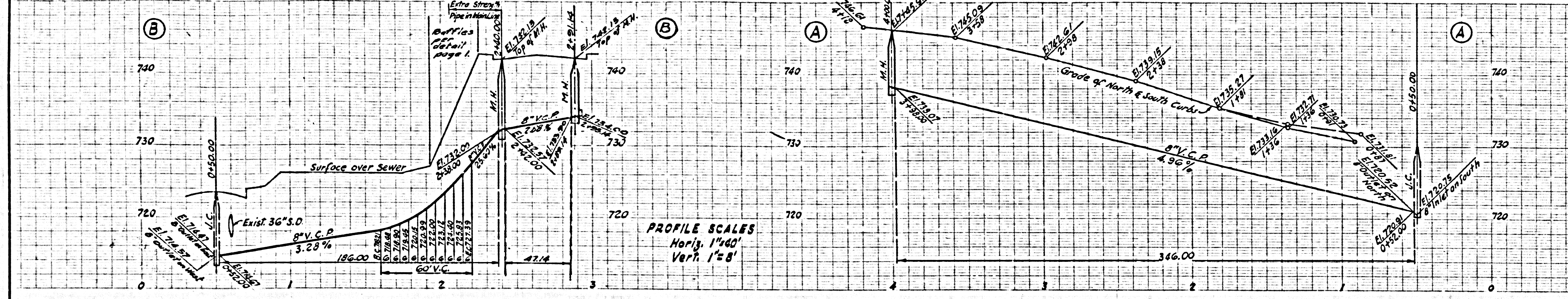
NO CHARGE FOR CONNECTIONS



DOUBLE SCALE

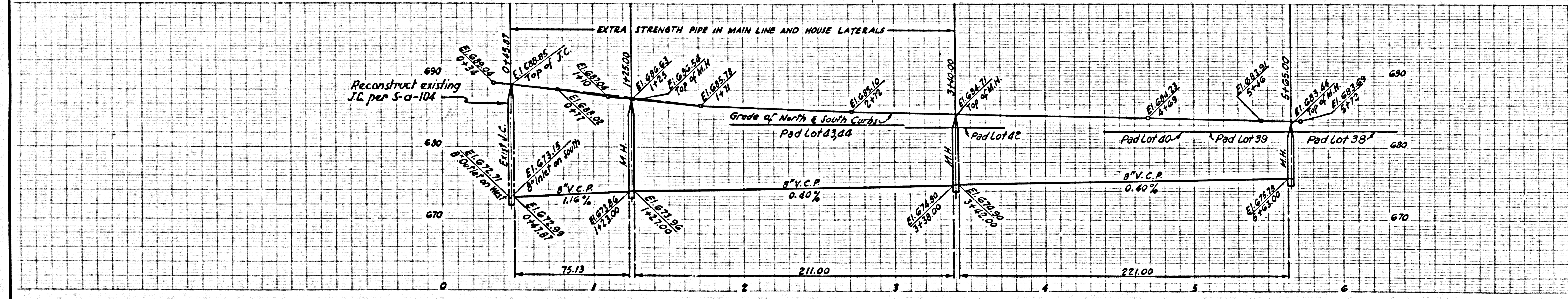
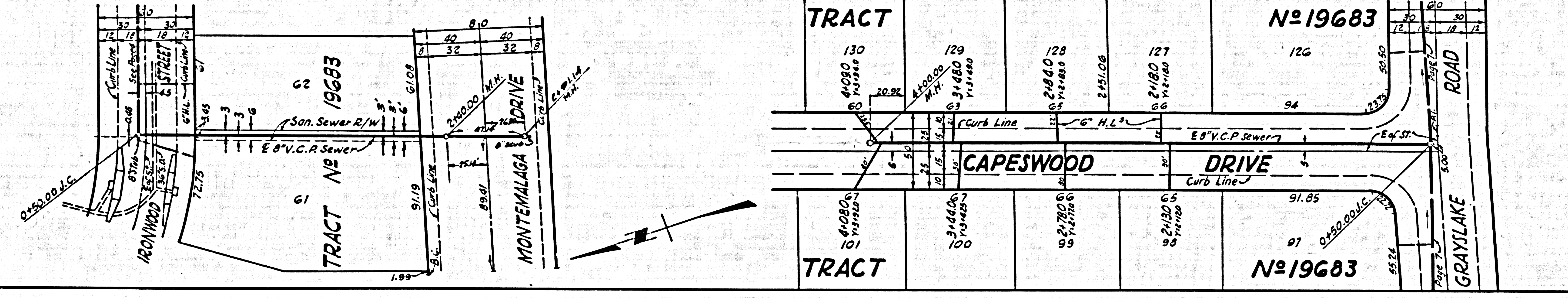
NO CHARGE FOR CONNECTIONS





DOUBLE SCALE
NO CHARGE FOR CONNECTIONS

30,205



DOUBLE SCALE
NO CHARGE FOR CONNECTIONS

30,206

