

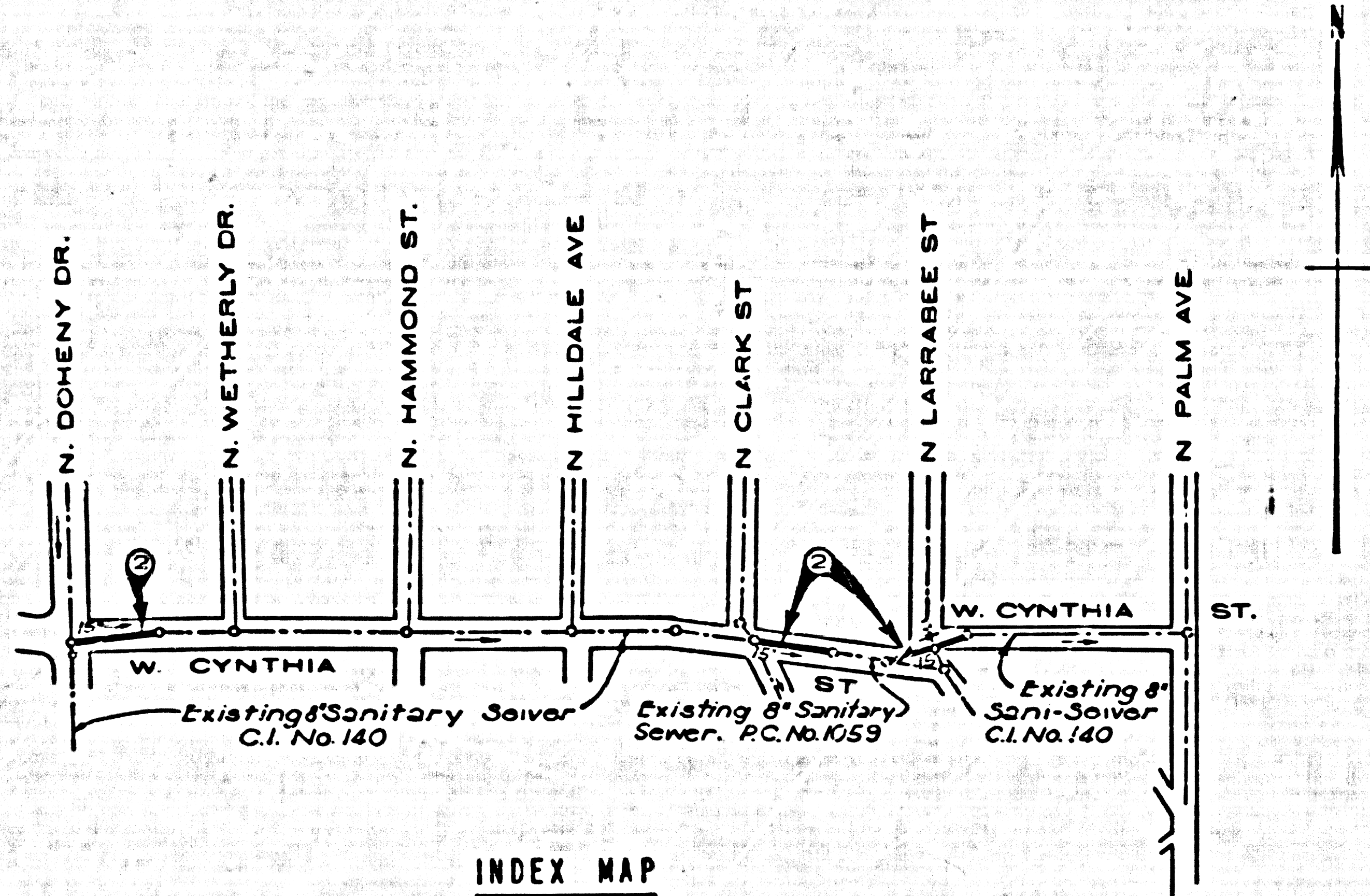
WEST HOLLYWOOD BLDG. DIST. NO. 9

PROFILE ALIGNMENT AND GRADE OF
SANITARY SEWERS PAGE 1
 TO BE CONSTRUCTED IN P.C. 5420
 J.N. 0352.73

CYNTHIA STREET
 PRIVATE CONTRACT NO. 5420

W.S. 22
 1 SHEETS, 2 PAGES
 FEBRUARY, 1960
 PREPARED IN THE OFFICES OF
SULLIVAN · PSOMAS AND YOUNG
 ENGINEERS SURVEYORS
 By: *C.E. Sullivan* 2/1/60
 REG. C. E. NO. 1518

29,212



- NOTES:
1. PROVIDE STAKES ON THE PROPERTY LINE OR PROPERTY LINES PRODUCED AT RIGHT ANGLES TO THE SEWER LINE AT THE CENTER LINE OF EACH MANHOLE.
 2. NO REPRESENTATIVE OF THE COUNTY ENGINEER WILL SURVEY OR LAY OUT ANY PORTION OF THE WORK.
 3. THE OWNER OR HIS AUTHORIZED REPRESENTATIVE SHALL FURNISH THE COUNTY ENGINEER WITH GRADE SHEETS AND STATIONING FOR ALL HOUSE LATERALS AND Y BRANCHES AND SHALL PROVIDE STAKES FOR THEM AT THEIR PROPER LOCATIONS WITH STATIONINGS PLAINLY MARKED. ANY CHANGE IN LOCATION SHALL BE REQUESTED IN WRITING BY THE OWNER OR HIS REPRESENTATIVE.
 4. THE PRIVATE ENGINEER SHALL FURNISH TWO HOLES EXTERIOR TO THE PROPERTY LINE BELOW THE TOP OF THE SEWER MAIN AT EACH MANHOLE.
 5. NO REVISIONS SHALL BE MADE IN THESE PLANS WITHOUT THE APPROVAL OF THE COUNTY ENGINEER.
 6. USE STANDARD MANHOLE FRAMES AND COVERS, 5-117, SPEC. 54-10000.
 7. USE STANDARD STRENGTH PIPE EXCEPT AS NOTED.
 8. USE CEMENT MORTAR OR "WELD-LOCK" OR "5-150-SEA" FOR ALL V.C.P. JOINTS PER SPEC. SECS. 54 & 41.
 9. REINFORCE ALL TRENCH WITHIN RAYED AREA TO MEET L.A. COUNTY ROAD DEPT. OF CALIF. STATE HIGHWAY REQUIREMENTS IN ACCORDANCE WITH PERMITS.
 10. ENCASE FOUR FEET OF SEWER AT POINTS OF INTERFERENCE WITH POLES, CASE III, 5-172.
 11. HOUSE LATERALS TO BE CONSTRUCTED WITH 15" V.C.P. PIPE PER SPEC. 54-10000.
 12. ALL STRUCTURES SHALL BE BENCH SEWER FORMULA NO. 1-104, SPEC. 54-10000.
 13. FOR ALLOWABLE LEAKAGE TEST USE STRUCTURE NO. 1-104, SPEC. 54.
 14. THE CONTRACTOR SHALL NOTIFY THE CONSTRUCTION & STORM DRAIN DIVISION BY TELEPHONE, MADISON 5-470, EXT. 30, AT LEAST TWENTY-FOUR HOURS BEFORE STARTING ANY WORK UNDER THIS CONTRACT.
 15. SPECIFICATIONS DATED JANUARY 1, 1960 APPLY IN THE CONSTRUCTION OF THIS PROJECT.
 16. ALL FLOWS TO BE MAINTAINED DURING CONSTRUCTION.
 17. REPLACE CONCRETE SIDEWALK TO SCOURING LINE.
 18. BARRILES TO BE FABRICATED FROM 2" x 4" BENCHWOOD AND FASTENED TOGETHER.

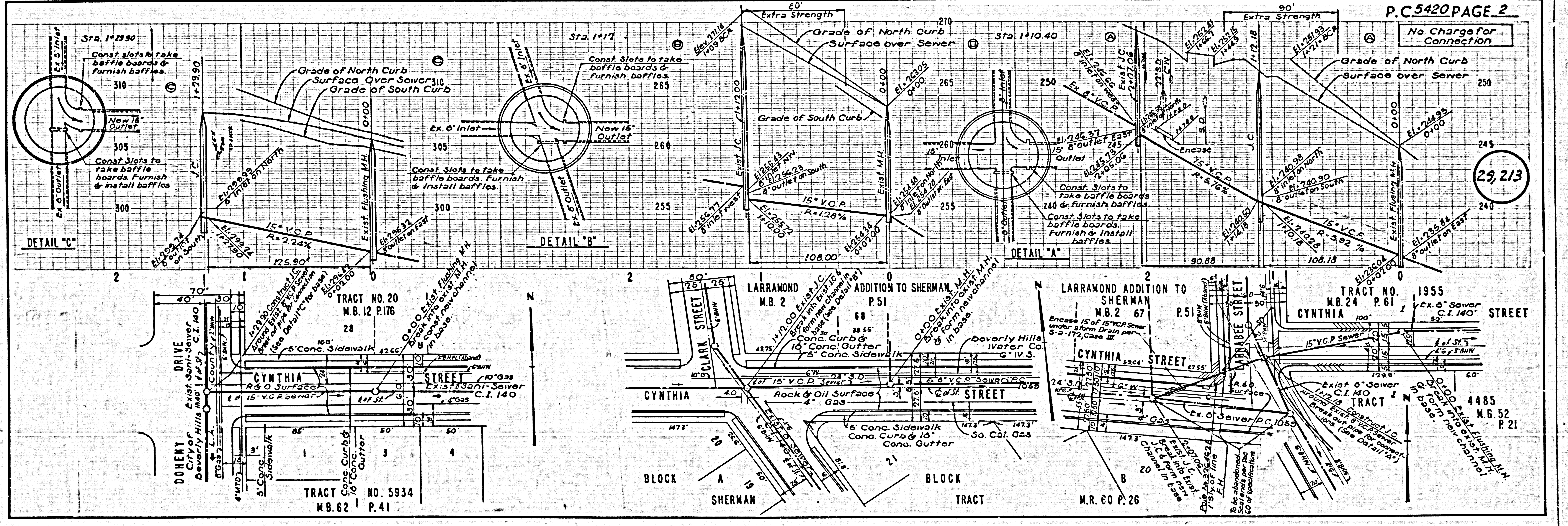
BN-115A Elev. 249.138 per F.B. 1128-222
 Larrabee St. & Cynthia St. SW cor., BT Spike
 in curb 9' west of west end C.R.

Bench in Error Subtract 0.42' to Elevations below

No Charge for Connections

NOTE:
 GRADES TO WHICH THIS IMPROVEMENT IS TO BE CONSTRUCTED ARE SHOWN ON PLANS AND PROFILE. GRADE POINTS FOR TOP OF CURB, CENTER LINE OF STREETS OR CENTER LINE OF ALLEYS ARE SHOWN BY CIRCLES ON PROFILE AT ALL POINTS BETWEEN DESIGNATED POINTS. THE GRADE SHALL BE ESTABLISHED SO AS TO CONFORM TO A STRAIGHT LINE DRAWN BETWEEN SAID DESIGNATED POINTS.
 ELEVATIONS ARE IN FEET ABOVE U.S.C. & G.S. SEA LEVEL DATUM OF 1929.
 THIS DRAWING AND THE DATA HEREON ARE HEREBY MADE A PART OF THE SPECIFICATIONS.
 BEFORE WORK CAN BE STARTED THE CONTRACTOR MUST OBTAIN A PERMIT TO EXCAVATE IN COUNTY STREETS FROM THE L.A. COUNTY ROAD DEPT., DISTRICT OFFICE NO. 6, AND MAKE A DEPOSIT WITH THE COUNTY ENGINEER ROOM 204 PAN AMERICAN BUILDING, 223 SO. BROADWAY, SUFFICIENT TO COVER THE COST OF CONSTRUCTION INSPECTION AND RECORD PLANS.
 APPROVAL OF THIS PLAN BY THE COUNTY OF LOS ANGELES DOES NOT CONSTITUTE A REPRESENTATION AS TO THE ACCURACY OF THE LOCATION OR OF THE EXISTENCE OR NON-EXISTENCE OF ANY UNDERGROUND UTILITY PIPE, OR STRUCTURE WITHIN THE LIMITS OF THIS PROJECT. THIS NOTE APPLIES TO ALL PAGES.
 IF WORK IS TO BE DONE IN A STATE HIGHWAY, A PERMIT MUST BE OBTAINED FROM THE STATE OF CALIFORNIA, DIVISION OF HIGHWAYS, 120 SOUTH SPRING STREET.

COUNTY OF LOS ANGELES, CALIFORNIA
 APPROVED, JOHN A. LAMBIE, COUNTY ENGINEER
 APPROVED, A. M. RAWN, CHIEF ENGINEER
 BY: *C.E. Sullivan* 2/1/60
 2277, SANITATION ENGINEER
 BY: *A.M. Rawn*
 OFFICE ENGINEER
 CHECKED BY: *J.V. Ouellet* 2-9-60
 OFFICE OF COUNTY ENGINEER, REG. C. E. NO. 9406



P.C. 5420 PAGE 2

No Charge for Connection

29,213

4888