

LA MIRADA BLDG. DIST. NO. 408

PROFILE ALIGNMENT AND GRADE OF **P.C. 5421**
SANITARY SEWERS PAGE 1
 TO BE CONSTRUCTED IN

TRACT NO. 25240
PRIVATE CONTRACT NO. 5421

W.S. 34
 3 SHEETS; 5 PAGES

SCALE: VERT. 1"=4' HORIZ. 1"=40'
 JUNE, 1960

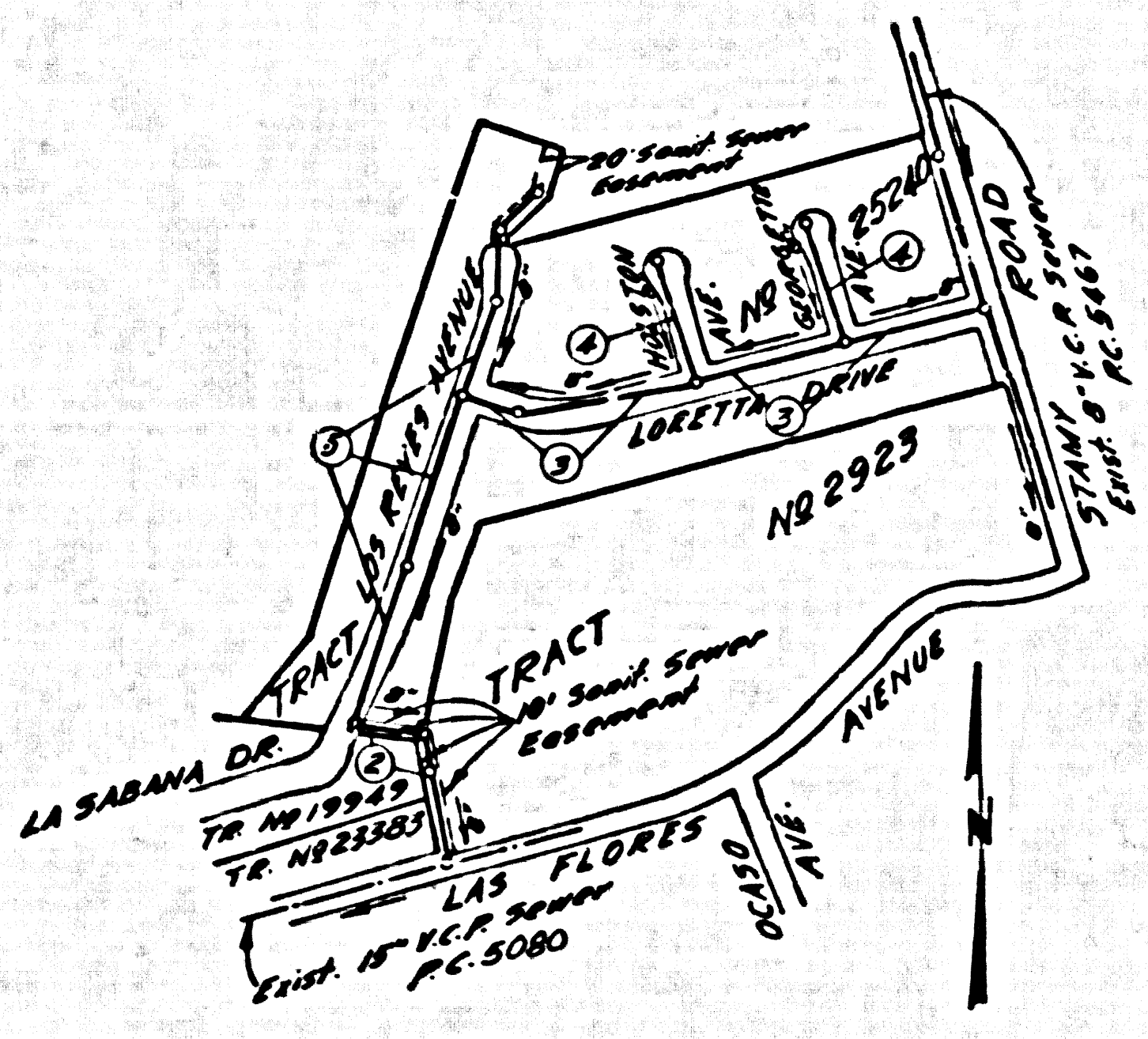
PREPARED IN THE OFFICES OF

KEMMERER ENGR. CO., INC.

By: *Robert R. Flores*
 REG. C. E. NO. 11349

FOR LEGEND SEE PLAN NO. S-44

31160



INDEX MAP
 Scale: 1"=400'
 Tract No. 25240
 P.C. 5421

Note:
 Lots 27-31 served by the
 exist sewer to Spruce St.

- 17-A. NO CONSTRUCTION WILL BE PERMITTED IN FILLED AREAS UNLESS ACCEPTABLE CERTIFICATION IS SUBMITTED TO THE CONSTRUCTION DIVISION OF THE COUNTY ENGINEER'S DEPARTMENT THAT RELATIVE COMPACTION IS GREATER THAN 90%.
- B. IF COMPACTION IS LESS THAN 90%, THE SEWER MUST BE CRADLED OR SHOWN ON THE PLANS FOR 5'-0" TO 6'-6" C. IF COMPACTION IS GREATER THAN 90%, CRADLING IS NOT REQUIRED. HOWEVER, JOINT COMPOUND MUST BE SUBSTITUTED FOR CEMENT MORTAR FOR ALL JOINTS IN FILLED AREAS.

REVISION:

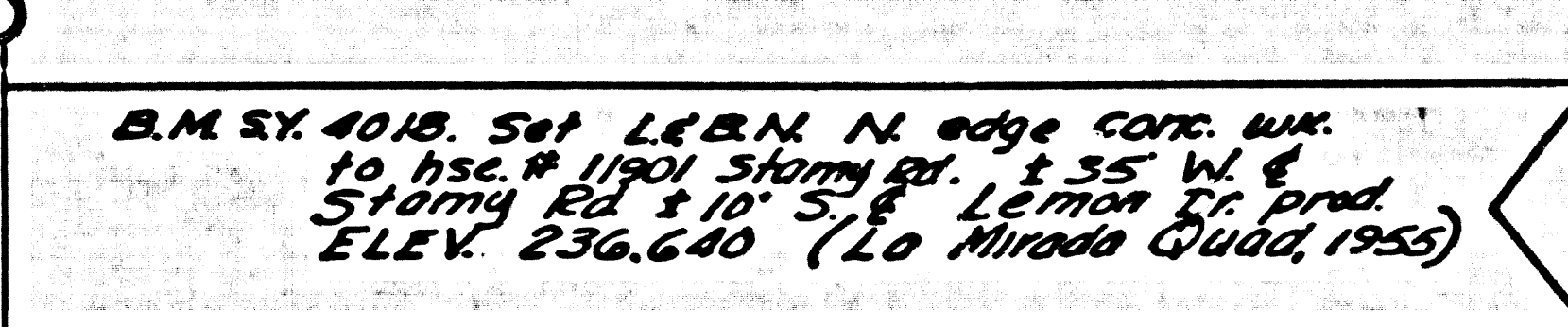
- PAGE 2A Sta. 0+00 To Sta. 1+20.72'
- PAGE 2B Sta. 1+70.00 To Sta. 2+71.48'
- PAGE 3A Sta. 0+00 To Sta. 2+30.42'
- PAGE 3B Sta. 0+00 To Sta. 2+30.42'
- PAGE 5 Sta. 0+24.06 To Sta. 0+74.16'

Revised Sewer Grade Due To Fill On
 Driveway (Page 2B) And Finished Pad
 Elevation of Lot 55.

Approved By: *John L. Lamb* 5-15-61
 CHIEF OF CITY ENGINEER 408 C.E. 3371

- NOTES:
- PROVIDE STAKES ON THE PROPERTY LINE OR PROPERTY LINES PRODUCED AT RIGHT ANGLES TO THE SEWER LINE AT THE CENTER LINE OF EACH MANHOLE.
 - NO REPRESENTATIVE OF THE CITY ENGINEER WILL SURVEY OR LAY OUT ANY PORTION OF THE WORK.
 - THE OWNER OR HIS AUTHORIZED REPRESENTATIVE SHALL FURNISH THE CITY ENGINEER WITH GRADE SHEET AND STATIONING FOR ALL HOUSE LATERALS AND Y BRANCHES AND SHALL PROVIDE STAKES FOR THEM AT THEIR PROPER LOCATIONS WITH STATIONING PLAINLY MARKED. ANY CHANGE IN LOCATION SHALL BE REQUESTED IN WRITING BY THE OWNER OR HIS REPRESENTATIVE.
 - THE PRIVATE ENGINEER SHALL FURNISH THE HOUSE LATERAL DEPTH AT THE PROPERTY LINE BELOW THE TOP OF CURB ELEVATION FOR EACH HOUSE LATERAL ON THE GRADE SHEET.
 - NO REVISIONS SHALL BE MADE IN THESE PLANS WITHOUT THE APPROVAL OF THE CITY ENGINEER.
 - USE STANDARD MANHOLE FRAMES AND COVERS, S-117A.
 - USE STANDARD STRENGTH PIPE EXCEPT AS NOTED.
 - USE CEMENT MORTAR OR "WEDGELOCK" OR "SPED-SEAL" FOR ALL V.C.P. JOINTS PER SPEC., SECS. 5 & 8-0.
 - RESURFACE ALL TRENCH WITHIN PAVED AREA TO MEET L.A. COUNTY ROAD DEPT. OR CALIF. STATE HIGHWAY REQUIREMENTS IN ACCORDANCE WITH PERMITS.
 - ENCASE FOUR FEET OF SEWER AT POINTS OF INTERFERENCE WITH POLES, CASE III, S-172.
 - HOUSE LATERALS TO BE CONSTRUCTED WITH INVERTS AT PROPERTY LINE 6 FEET BELOW CURB GRADE EXCEPT AS NOTED.
 - ALL STRUCTURES SHALL BE WPC SEWER STRUCTURES, S-104.
 - FOR ALLOWABLE LOADS USE FORMULA NO. 1, SPEC. SEC. 8A.
 - MANHOLE TOPS IN UNIMPROVED HIGHWAY TO BE LEVEL WITH FINISHED GRADE.
 - THE CONTRACTOR SHALL NOTIFY THE CONSTRUCTION DIVISION BY TELEPHONE, MADISON 3-40, AT LEAST TWENTY-FOUR HOURS BEFORE STARTING ANY WORK UNDER THIS CONTRACT.
 - STANDARD SPECIFICATIONS DATED JANUARY 1, 1960 BY FILE IN CITY APPLY IN THE CONSTRUCTION OF THIS PROJECT.

NOTE:
 IT SHALL BE THE CONTRACTOR'S RESPONSIBILITY TO LOCATE ALL UNDERGROUND LINES OF EVERY NATURE WHETHER SHOWN HEREON OR NOT AND PROTECT THEM FROM DAMAGE. THE CONTRACTOR SHALL BE RESPONSIBLE FOR ANY DAMAGE TO ANY LINE DAMAGED BY ANY OPERATION IN CONNECTION WITH THE PROSECUTION OF THIS WORK.



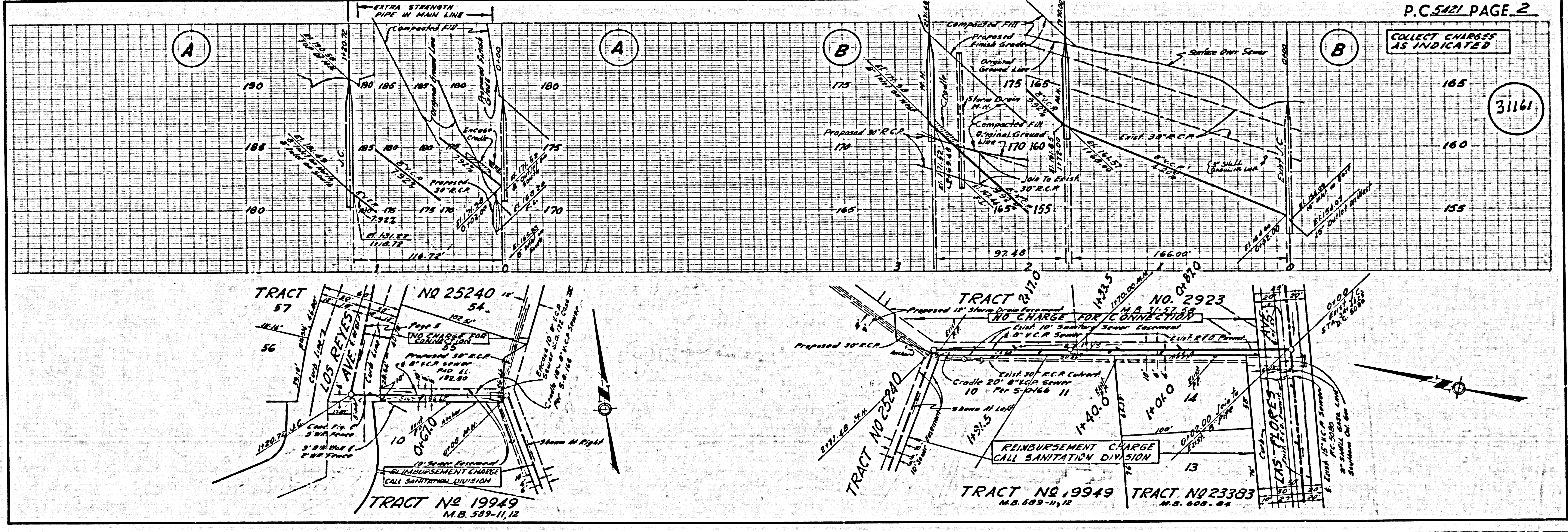
COLLECT CHARGES
 AS INDICATED

John L. Lamb 10-17-60
 CHIEF OF CITY ENGINEER 408 C.E. 3371

REVISION:
 PAGE 2A Sta. 0+00 To Sta. 1+20.72'
 PAGE 3A Sta. 0+00 To Sta. 2+30.42'
 PAGE 5 Sta. 0+24.06 To Sta. 0+74.16'
 Revised sewer grade due to design of proposed storm drain (P.D. 1959)
 APPROVED BY: *John L. Lamb* 4-4-61
 CHIEF OF CITY ENGINEER 408 C.E. 3371

CITY OF LA MIRADA, CALIFORNIA
 APPROVED, JOHN A. LAMBE, CITY ENGINEER
 APPROVED, C.E. COMPTON, CHIEF ENGINEER
 CO. SAN. DIST. NO. 18
 BY: *John A. Lamb* *C. E. Compton*
 CHIEF ENGINEER OFFICE ENGINEER
 CHECKED BY: *John A. Lamb* 10-24-60
 OFFICE OF CITY ENGINEER, Rm. 6, No. 11636

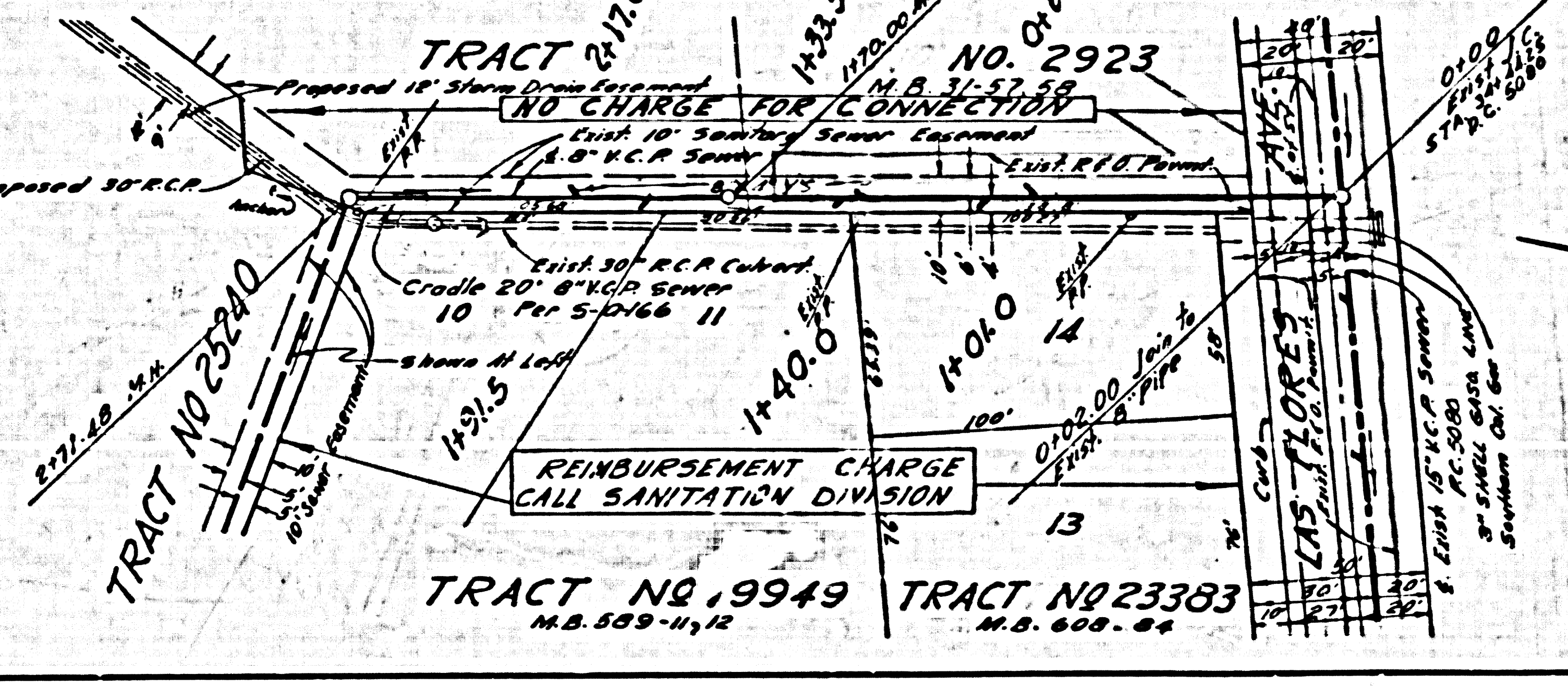
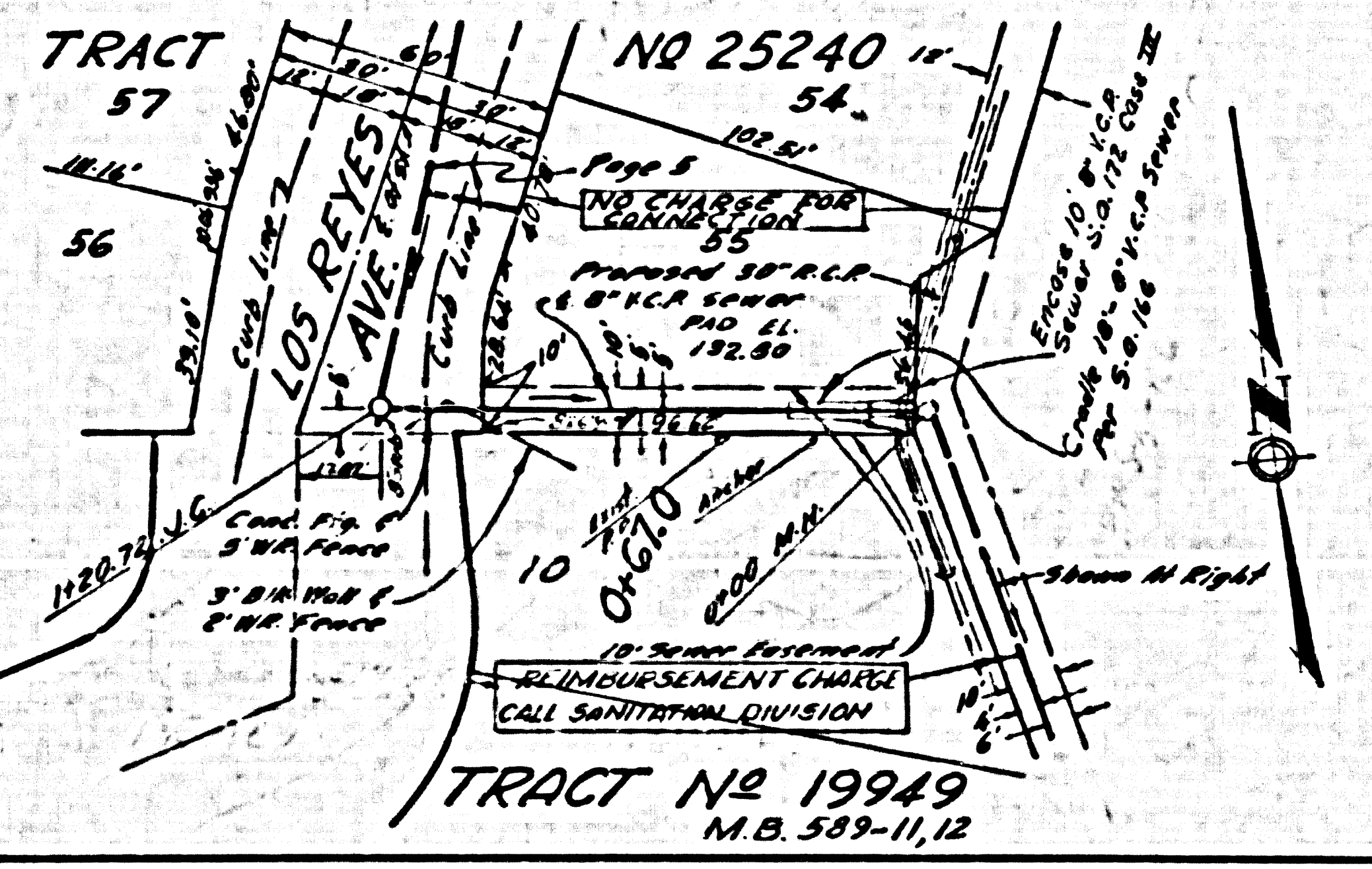
SUBMITTED BY: *John L. Lamb* 10-17-60
 CHIEF OF CITY ENGINEER 408 C.E. 3371



P.C. 5421 PAGE 2

COLLECT CHARGES
 AS INDICATED

31161



REIMBURSEMENT CHARGE
 CALL SANITATION DIVISION

TRACT NO. 19949
 M.B. 589-11,12

TRACT NO. 23383
 M.B. 600-04

