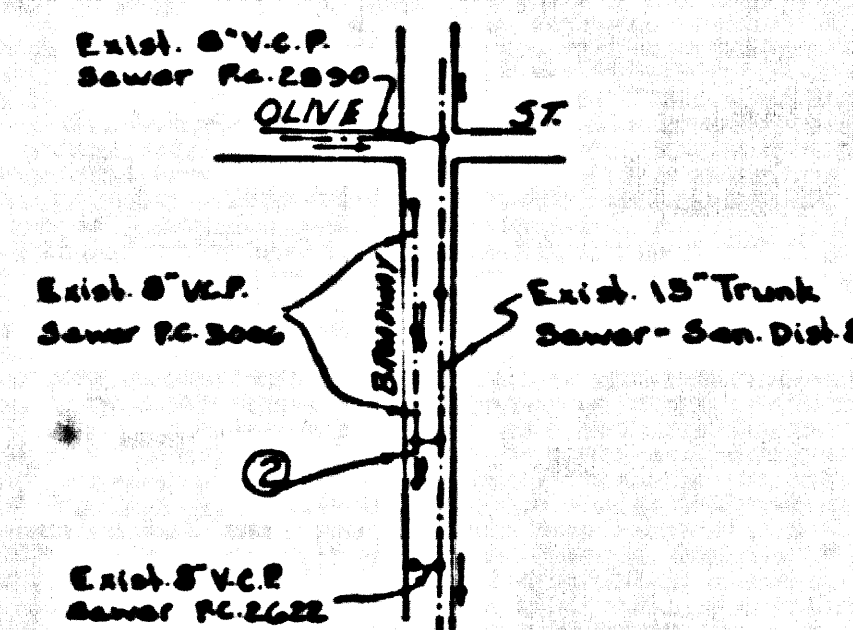


B.M. 54 3889 El. 43.515 (1955)
 L & B.M. N. side cor. base of signal lights 230' W.
 of Broadway 145 S. E Olive St. Gardena Quad.



INDEX MAP
 P.C. 5426
 SCALE: 1"=60'

LENNOX BLDG. DIST. NO. 7

PROFILE ALIGNMENT AND GRADE OF **P.C. 5426**
SANITARY SEWERS PAGE 1
 TO BE CONSTRUCTED IN

BROADWAY

PRIVATE CONTRACT NO. 5426

W.S. 26

1 SHEET OF 2 PAGES

SCALE: VERT. 1"=4' HORIZ. 1"=40' JAN. 1960

PREPARED IN THE OFFICES OF

OLSON SURVEYING SERVICE

By *Walter O. Olson*
 REG. C. E. NO. 1820

28,933

FOR LEGEND SEE PLAN NO. S-A-44

NOTES:

1. PROVIDE STAKES ON THE PROPERTY LINE OR PROPERTY LINES PRODUCED AT RIGHT ANGLES TO THE SPWER LINE AT THE CENTER LINE OF EACH MANHOLE.
2. NO REPRESENTATIVE OF THE COUNTY ENGINEER WILL SURVEY OR LAY OUT ANY PORTION OF THE WORK.
3. THE OWNER OR HIS AUTHORIZED REPRESENTATIVE SHALL FURNISH THE COUNTY ENGINEER WITH GRADE SHEETS AND STATIONING FOR ALL HOUSE LATERALS AND Y BRANCHES AND SHALL PROVIDE STAKES FOR THEM AT THEIR PROPER LOCATIONS WITH STATIONING PLAINLY MARKED. ANY CHANGE IN LOCATION SHALL BE REQUESTED IN WRITING BY THE OWNER OR HIS REPRESENTATIVE.
4. THE PRIVATE ENGINEER SHALL FURNISH THE HOUSE LATERAL DEPTH AT THE PROPERTY LINE BELOW THE TOP OF CURB ELEVATION FOR EACH HOUSE LATERAL ON THE GRADE SHEET.
5. NO REVISIONS SHALL BE MADE IN THESE PLANS WITHOUT THE APPROVAL OF THE COUNTY ENGINEER.
6. USE STANDARD MANHOLE FRAMES AND COVERS, S-117, EXCEPT AS NOTED.
7. USE EXTRA STRENGTH PIPE.
8. USE CEMENT MORTAR OR "WEDDER-LOCK" OR "SPEED-SEAL" FOR ALL V.C.P. JOINTS PER SPEC'S, SECS. 36 & 40.
9. RESURFACE ALL TRENCH WITHIN PAVED AREA TO MEET L.A. COUNTY ROAD DEPT. OR CALIF. STATE HIGHWAY REQUIREMENTS IN ACCORDANCE WITH PERMITS.
10. ENCASE FOUR FEET OF SEWER AT POINTS OF INTERFERENCE WITH POLES, CASE III, S-172.
11. HOUSE LATERALS TO BE CONSTRUCTED WITH INVERTS AT PROPERTY LINE 7 FEET BELOW CENTERLINE OF STREET.
12. ALL STRUCTURES SHALL BE BRICK SEWER STRUCTURES, S-104, EXCEPT AS NOTED.
13. FOR ALLOWABLE LEAKAGE TEST USE FORMULA NO. 1 SPEC'S, SEC. 64.
14. MANHOLE TOPS IN UNIMPROVED RIGHTS-OF-WAY TO BE SIX INCHES ABOVE FINISHED GRADE.
15. THE CONTRACTOR SHALL NOTIFY THE CONSTRUCTION & STORM DRAIN DIVISION BY TELEPHONE, MADISON 5-47, EXT. 362, AT LEAST TWENTY-FOUR HOURS BEFORE STARTING ANY WORK UNDER THIS CONTRACT.
16. STANDARD SPECIFICATIONS DATED JAN. 1960 APPLY IN THE CONSTRUCTION OF THIS PROJECT.

NO CHARGE FOR CONNECTIONS
Arthur B. Leady

APPROVED BY THE INDUSTRIAL WASTE DIV.
J. P. Light
 3-15-60

NOTE:
 GRADES TO WHICH THIS IMPROVEMENT IS TO BE CONSTRUCTED ARE SHOWN ON PLANS AND PROFILES. GRADE POINTS FOR TOP OF CURBS, CENTER LINE OF STREETS OR CENTER LINE OF ALLEYS ARE SHOWN BY CIRCLES ON PROFILES. AT ALL POINTS BETWEEN DESIGNATED POINTS THE GRADE SHALL BE ESTABLISHED SO AS TO CONFORM TO A STRAIGHT LINE DRAWN BETWEEN SAID DESIGNATED POINTS.
 ELEVATIONS ARE IN FEET ABOVE U.S.C. & G.S. SEA LEVEL DATUM OF 1929.
 THIS DRAWING AND THE DATA HEREON ARE HEREBY MADE A PART OF THE SPECIFICATIONS.
 WORK SHALL BE CONSTRUCTED ACCORDING TO SPECIFICATIONS ON FILE IN THE OFFICE OF THE COUNTY ENGINEER AND SHALL BE PROSECUTED ONLY IN THE PRESENCE OF THE COUNTY ENGINEER.
 BEFORE WORK CAN BE STARTED, THE CONTRACTOR MUST OBTAIN A PERMIT TO EXCAVATE IN COUNTY STREETS FROM THE L. A. COUNTY ROAD DEPT., DISTRICT OFFICE NO. 13, AND PAY A FEE TO THE COUNTY ENGINEER ROOM 324 PAN AMERICAN BUILDING, 344 S.O. BROADWAY SUFFICIENT TO COVER THE COST OF CONSTRUCTION INSPECTION AND RECORD PLANS.
 APPROVAL OF THIS PLAN BY THE COUNTY OF LOS ANGELES DOES NOT CONSTITUTE A REPRESENTATION AS TO THE ACCURACY OF THE LOCATION OF OR THE EXISTENCE OR NON-EXISTENCE OF ANY UNDERGROUND UTILITY PIPE, OR STRUCTURE WITHIN THE LIMITS OF THIS PROJECT. THIS NOTE APPLIES TO ALL PAGES.
 IF WORK IS TO BE DONE IN A STATE HIGHWAY, A PERMIT MUST BE OBTAINED FROM THE STATE OF CALIFORNIA, DIVISION OF HIGHWAYS, 126 SOUTH SPRING STREET.

COUNTY OF LOS ANGELES, CALIFORNIA

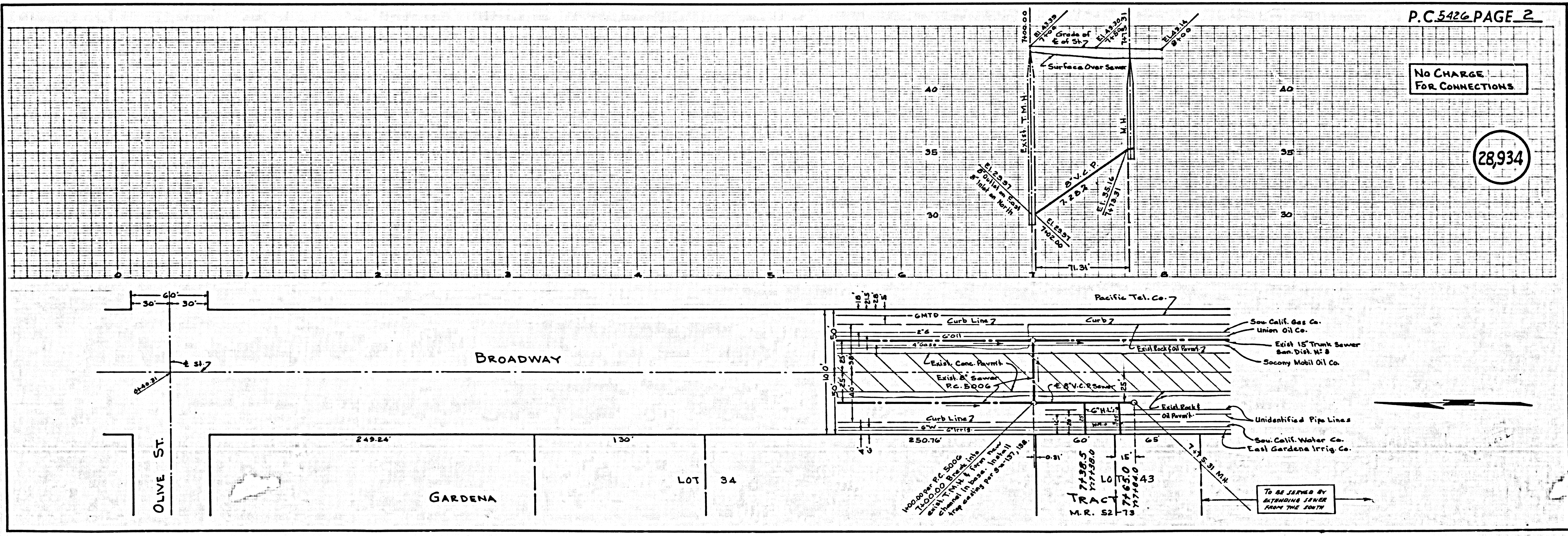
APPROVED, JOHN A. LAMBIE, COUNTY ENGINEER APPROVED, C.R. COMPTON, CHIEF ENGINEER

BY *E.E. Brown* SANITATION ENGINEER BY *J. C. Thompson* CO. SAN. DIST. NO. 8 OFFICE ENGINEER

CHECKED BY *W. D. Dyer* 3-13-60

OFFICE OF COUNTY ENGINEER, REG. C. E. NO. 3456

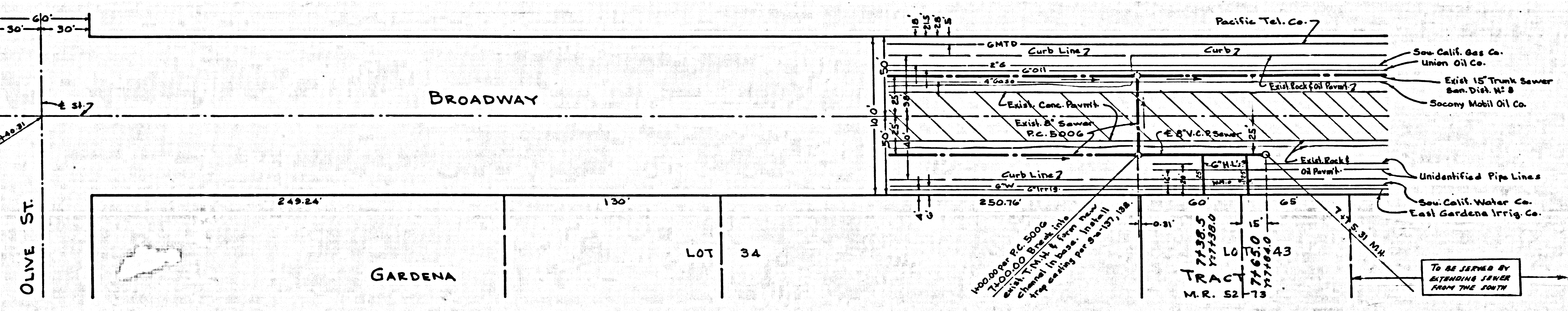
Submitted By: *Jack C. Thompson*
 Project Engineer, Centinela Valley Regional Engineer, Reg. C.E. #



P.C. 5426 PAGE 2

NO CHARGE FOR CONNECTIONS

28,934



TO BE JERMED BY
 APPROVING SERVICE
 FROM THE SOUTH