

PUEENTE BLDG. DIST. NO. 2

PROFILE ALIGNMENT AND GRADE OF P.C. 5434
 SANITARY SEWERS PAGE 1
 TO BE CONSTRUCTED IN J.N. 0352.83
TRACT No 25162

PRIVATE CONTRACT NO. 5434

W.S. 37
 1 SHEET, 2 PAGES

SCALE: VERT. 1"=4' HORIZ. 1"=40' FEBRUARY, 1960

PREPARED IN THE OFFICES OF
Pond ENGINEERING CO.
 By Marshall C. Pond
 MARSHALL C. POND REG. C. E. NO. 2522

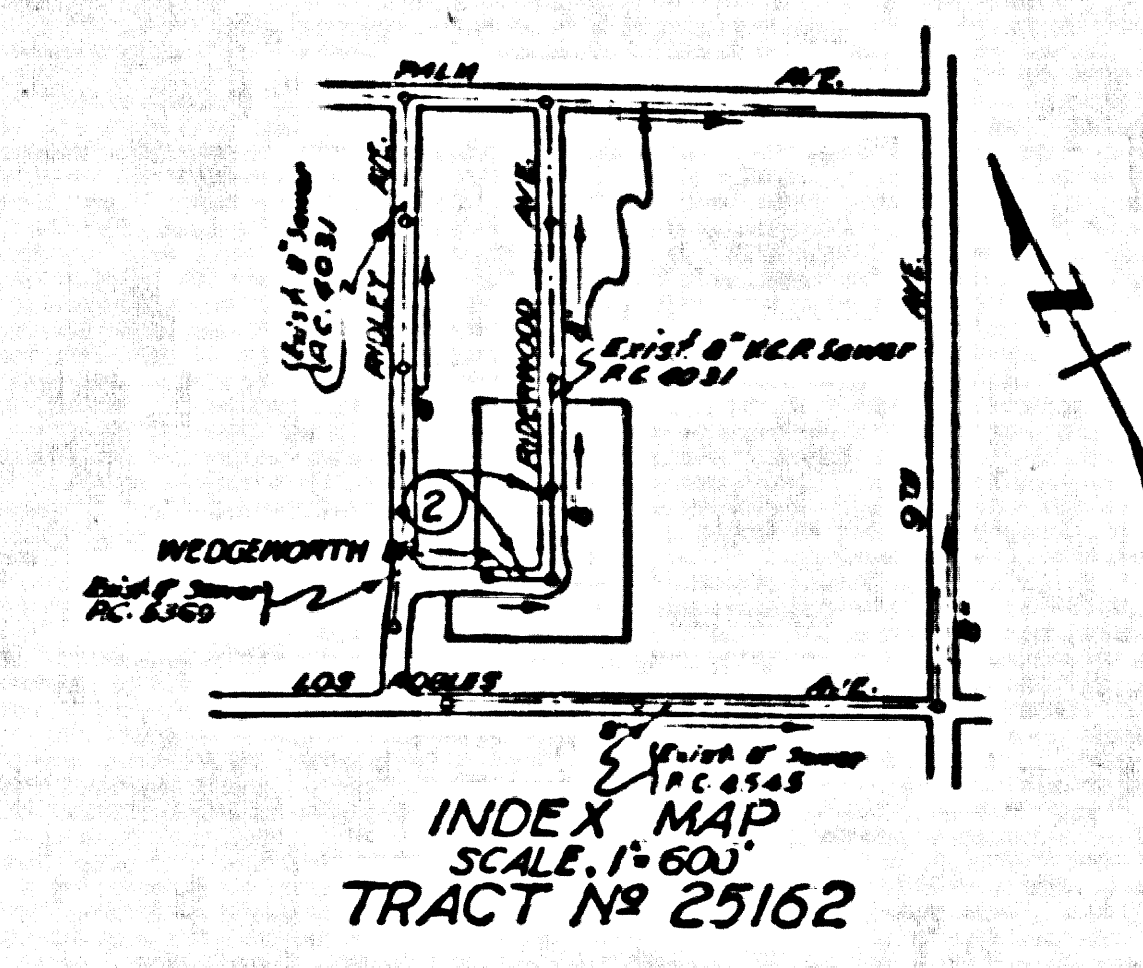
29,553

FOR LEGEND SEE PLAN NO. S-A-54

B.M. - 5G 1391, Elev. 401.958, L.A.C.R.D., Whittier Blvd. 1955.
 Ref. Dr. @ 7' Ave. @ N.W. Cor. ± 25' N. ± 45' W. ± Int.
 Ref. Dept. 5.14 70g near E. edge of conc. walk to top of 14.365 Ref. Dr.

NO CHARGE FOR CONNECTIONS
 7: 79C Remains 3-22-60

- NOTES
1. PROVIDE STAKES ON THE PROPERTY LINE OR PROPERTY LINES PRODUCED AT RIGHT ANGLES TO THE SEWER LINE AT THE CENTER LINE OF EACH MANHOLE.
 2. NO REPRESENTATIVE OF THE COUNTY ENGINEER SHALL SURVEY OR LAY OUT ANY PORTION OF THE WORK.
 3. THE OWNER OR HIS AUTHORIZED REPRESENTATIVE SHALL FURNISH THE COUNTY ENGINEER WITH GRADE SHEETS AND STATIONING FOR ALL HOUSE LATERALS AND Y BRANCHES AND SHALL PROVIDE STAKES FOR THEM AT THEIR PROPER LOCATIONS WITH STATIONING PLAINLY MARKED. ANY CHANGE IN LOCATION SHALL BE REQUESTED IN WRITING BY THE OWNER OR HIS REPRESENTATIVE.
 4. THE PRIVATE ENGINEER SHALL FURNISH THE HOUSE LATERAL DEPTH AT THE PROPERTY LINE 8" MIN. TO THE TOP OF CURB ELEVATION FOR EACH HOUSE LATERAL ON THE GRADE SHEET.
 5. NO REVISIONS SHALL BE MADE IN THESE PLANS WITHOUT THE APPROVAL OF THE COUNTY ENGINEER.
 6. USE STANDARD MANHOLE FRAMES AND COVERS, S-117.
 7. USE STANDARD STRENGTH PIPE.
 8. USE CEMENT MORTAR OR "WEDGE-LOCK" OR "SPEED SEAL" FOR ALL V.C.P. JOINTS PER SPEC'S, SECS. 26 & 28.
 9. RESURFACE ALL TRENCH WITHIN PAVED AREA TO MEET L.A. COUNTY ROAD DEPT. OR CALIF. STATE HIGHWAY REQUIREMENTS IN ACCORDANCE WITH PERMITS.
 10. ENCASE FOUR FEET OF SEWER AT POINTS OF INTERFERENCE WITH POLES, CASE IN, S-172.
 11. HOUSE LATERALS TO BE CONSTRUCTED WITH INVERTS AT PROPERTY LINE. 8" MIN. FITT BELOW CURB GRADE.
 12. ALL STRUCTURES SHALL BE BRICK OR CONCRETE STRUCTURES, S-104.
 13. FOR ALLOWABLE LEAKAGE TEST USE FORMULA NO. 1, SPEC'S, SEC. 54.
 14. MANHOLE TOPS IN UNIMPROVED RIGHTS-OF-WAY TO BE SIX INCHES ABOVE FINISHED GRADE.
 15. THE CONTRACTOR SHALL NOTIFY THE CONSTRUCTION & STORM DRAIN DIVISION BY TELEPHONE, MADISON 9-414, EXT. 362, AT LEAST TWENTY FOUR HOURS BEFORE STARTING ANY WORK UNDER THIS CONTRACT.
 16. STANDARD SPECIFICATIONS DATED JANUARY 4, 1960 SHALL APPLY IN THE CONSTRUCTION OF THIS PROJECT.



NOTE: GRADE TO WHICH THIS IMPROVEMENT IS TO BE CONSTRUCTED ARE SHOWN ON PLANS AND PROFILES. GRADE POINTS FOR TOP OF CURB, CENTER LINE OF STREETS, OR CENTER LINE OF ALLEYS ARE SHOWN BY CIRCLES ON PROFILES AT ALL POINTS BETWEEN DESIGNATED POINTS THE GRADE SHALL BE ESTABLISHED SO AS TO CONFORM TO A STRAIGHT LINE DRAWN BETWEEN SAID DESIGNATED POINTS.

ELEVATIONS ARE IN FEET ABOVE U.S.C. & G.S. SEA LEVEL DATUM OF 1929.

THIS DRAWING AND THE DATA HEREON ARE HEREBY MADE A PART OF THE SPECIFICATIONS. WORK SHALL BE CONSTRUCTED ACCORDING TO SPECIFICATIONS UNLESS IN THE OFFICE OF THE COUNTY ENGINEER AND SHALL BE PROSECUTED ONLY IN THE PRESENCE OF THE COUNTY ENGINEER.

BEFORE WORK CAN BE STARTED, THE CONTRACTOR MUST OBTAIN A PERMIT TO EXCAVATE IN COUNTY STREETS FROM THE L.A. COUNTY ROAD DEPT., DISTRICT OFFICE NO. 1 AND PAY TO THE COUNTY ENGINEER, ROOM 324 PAN AMERICAN BUILDING, 228 SO. BROADWAY SURVEY TO COVER THE COST OF CONSTRUCTION INSPECTION AND RECORD PLANS.

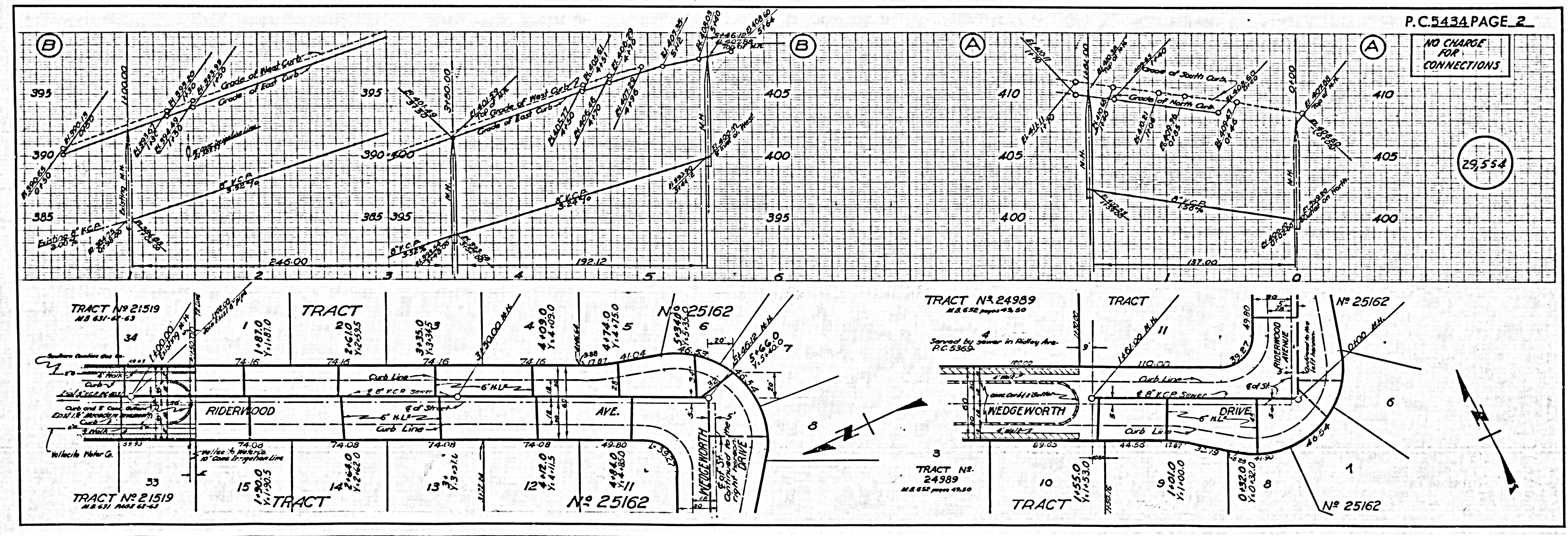
APPROVAL OF THIS PLAN BY THE COUNTY OF LOS ANGELES DOES NOT CONSTITUTE A REPRESENTATION AS TO THE ACCURACY OF THE LOCATION OF OR THE EXISTENCE OR NON-EXISTENCE OF ANY UNDERGROUND UTILITY PIPE, OR STRUCTURE WITHIN THE LIMITS OF THIS PROJECT. THIS NOTE APPLIES TO ALL PAGES.

IF WORK IS TO BE DONE IN A STATE HIGHWAY, A PERMIT MUST BE OBTAINED FROM THE STATE OF CALIFORNIA, DIVISION OF HIGHWAYS, 126 SOUTH SPRING STREET.

COUNTY OF LOS ANGELES, CALIFORNIA

APPROVED, JOHN A. LAMBE, COUNTY ENGINEER
 APPROVED, W.C. Reinhardt CHIEF ENGINEER
 (S. SAN. DIST. NO. 12)
 BY Marshall C. Pond ALLY. SANITATION ENGINEER BY W.C. Reinhardt CHIEF ENGINEER
 CHECKED BY W.C. Reinhardt 2-25-60 OFFICE OF COUNTY ENGINEER, REG. C. E. NO. 346

SUBMITTED: W.C. Reinhardt
 SAN DIMAS REGIONAL ENGINEER



P.C. 5434 PAGE 2

NO CHARGE FOR CONNECTIONS

29,554