

B.M. - S.G. 1515 Elev 637.44
 B.M. 4' Top of B.C.C. @ NW Cor. Grand
 Ave. & Covina Blvd. - 2.67 N of E Covina
 Blvd. & 40' W of E Grand Ave. (San Dimas Quad 1960)

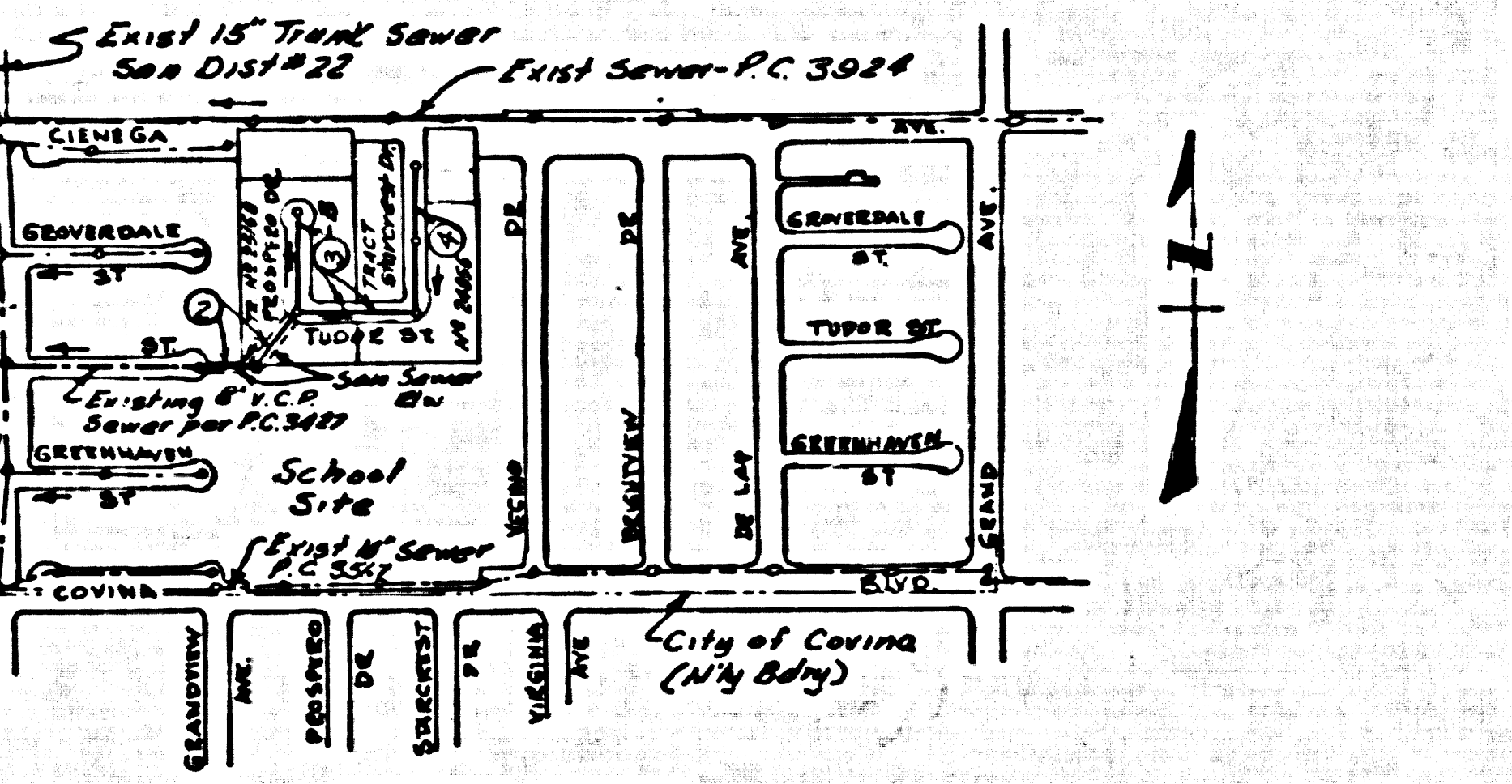
SAN DIMAS BLDG. DIST. NO. 10

- NOTES:**
1. PROVIDE STAKES ON THE PROPERTY LINE OR ON PROPERTY LINES PRODUCED AT RIGHT ANGLES TO THE SEWER LINE AT THE CENTER LINE OF EACH MANHOLE.
 2. NO REPRESENTATIVE OF THE COUNTY ENGINEER WILL SURVEY OR LAY OUT ANY PORTION OF THE WORK.
 3. THE OWNER OR HIS AUTHORIZED REPRESENTATIVE SHALL FURNISH THE COUNTY ENGINEER WITH GRADE SHEETS AND STATIONING FOR ALL HOUSE LATERALS AND Y BRANCHES AND SHALL PROVIDE STAKES FOR THEM AT THEIR PROPER LOCATIONS WITH STATIONING PLAINLY MARKED. ANY CHANGE IN LOCATION SHALL BE REQUESTED IN WRITING BY THE OWNER OR HIS REPRESENTATIVE.
 4. THE PRIVATE ENGINEER SHALL FURNISH THE HOUSE LATERAL DEPTH AT THE PROPERTY LINE BELOW THE TOP OF CURB ELEVATION FOR EACH HOUSE LATERAL ON THE GRADE SHEET.
 5. NO REVISIONS SHALL BE MADE IN THESE PLANS WITHOUT THE APPROVAL OF THE COUNTY ENGINEER.
 6. USE STANDARD MANHOLE FRAMES AND COVERS, S-177.
 7. USE STANDARD STRENGTH PIPE.
 8. USE CEMENT MORTAR OR "WOOD-LOC" OR "DIP-SEAL" FOR ALL V.C.P. JOINTS PER SPEC., SECT. 34 & 40.
 9. RESURFACE ALL TRENCH WITHIN PAVED AREA TO MEET L.A. COUNTY ROAD DEPT. OR CALIF. STATE HIGHWAY REQUIREMENTS IN ACCORDANCE WITH PERMITS.
 10. ENCASE FOUR FEET OF SEWER AT POINTS OF INTERFERENCE WITH POLES, CASE III, S-172.
 11. HOUSE LATERALS TO BE CONSTRUCTED WITH INVERTS AT PROPERTY LINE 6 FEET BELOW CURB GRADE EXCEPT AS NOTED.
 12. ALL STRUCTURES SHALL BE BRICK SPWER STRUCTURES, S-164.
 13. FOR ALLOWABLE LEAKAGE TEST USE FORMULA NO. 1, SPEC., SEC. 34.
 14. MANHOLE TOPS IN UNIMPROVED RIGHTS-OF-WAY TO BE SIX INCHES ABOVE FINISHED GRADE.
 15. THE CONTRACTOR SHALL NOTIFY THE CONSTRUCTION & STORM DRAIN DIVISION BY TELEPHONE, MADISON 9-872, EXT. 362, AT LEAST TWENTY-FOUR HOURS BEFORE STARTING ANY WORK UNDER THIS CONTRACT.
 16. STANDARD SPECIFICATIONS DATED JANUARY 1, 1960 APPLY IN THE CONSTRUCTION OF THIS PROJECT.

PROFILE ALIGNMENT AND GRADE OF **P.C. 5442**
SANITARY SEWERS PAGE **1**
 TO BE CONSTRUCTED IN
TRACT NO. 24856
AND
TRACT NO. 25168
PRIVATE CONTRACT NO. 5442

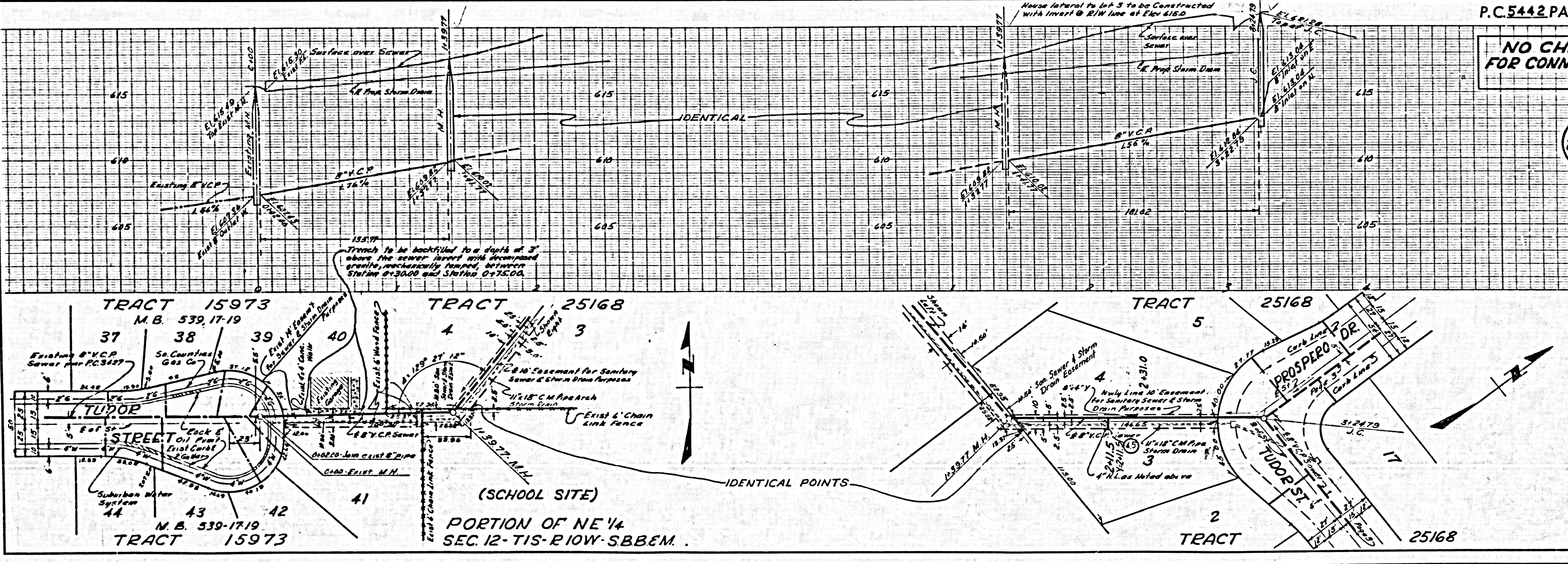
W.S. 47
 2 SHEETS; 4 PAGES
 SCALE: VERT. 1"=4' HORIZ. 1"=40' MARCH, 1960
 PREPARED IN THE OFFICES OF
W. D. DAUGHERTY
 REG. C. E. NO. 11637
 FOR LEGEND SEE PLAN NO. S-A-64

NO CHARGE FOR CONNECTIONS
 7. 77 Covina 5-10-60



NOTES:
 GRADES TO WHICH THIS IMPROVEMENT IS TO BE CONSTRUCTED ARE SHOWN ON PLANS AND PROFILES. GRADE POINTS FOR TOP OF CURB, CENTER LINE OF STREET, OR CENTER LINE OF ALLEYS ARE SHOWN BY CIRCLES ON PROFILES AT ALL POINTS BETWEEN DESIGNATED POINTS THE GRADE SHALL BE ESTABLISHED SO AS TO CONFORM TO A STRAIGHT LINE DRAWN BETWEEN SAID DESIGNATED POINTS.
 ELEVATIONS ARE IN FEET ABOVE U.S.C. & G.S. MEAN SEA LEVEL DATUM OF 1929.
 THIS DRAWING AND THE DATA HEREON ARE HEREBY MADE A PART OF THE SPECIFICATIONS.
 WORK SHALL BE CONSTRUCTED ACCORDING TO SPECIFICATIONS ON FILE IN THE OFFICE OF THE COUNTY ENGINEER AND SHALL BE PROSECUTED ONLY IN THE PRESENCE OF THE COUNTY ENGINEER.
 BEFORE WORK CAN BE STARTED, THE CONTRACTOR MUST OBTAIN A PERMIT TO EXCAVATE IN COUNTY STREETS FROM THE L.A. COUNTY ROAD DEPT., DISTRICT OFFICE NO. 7, AND PAY A FEE TO THE COUNTY ENGINEER, ROOM 334 SAN AMERICAN BUILDING, 330 SO BROADWAY SUPERVISOR TO COVER THE COST OF CONSTRUCTION INSPECTION AND RECORD PLANS.
 APPROVAL OF THIS PLAN BY THE COUNTY OF LOS ANGELES DOES NOT CONSTITUTE A REPRESENTATION AS TO THE ACCURACY OF THE LOCATION OF OR THE EXISTENCE OR NON-EXISTENCE OF ANY UNDERGROUND UTILITY PIPE, OR STRUCTURE WITHIN THE LIMITS OF THE PROJECT. THIS NOTE APPLIES TO ALL PAGES.
 IF WORK IS TO BE DONE IN A STATE HIGHWAY, A PERMIT MUST BE OBTAINED FROM THE STATE OF CALIFORNIA, DIVISION OF HIGHWAYS, 120 SOUTH SPRING STREET.

COUNTY OF LOS ANGELES, CALIFORNIA
 APPROVED, JOHN A. LAMBE, COUNTY ENGINEER
 APPROVED, C. E. COFFMAN, CHIEF ENGINEER
 BY: *[Signature]* SANITATION ENGINEER BY: *[Signature]* OFFICE ENGINEER
 CHECKED BY: *[Signature]* 5-12-60
 OFFICE OF COUNTY ENGINEER, REG. C. E. NO. 11636
 SUBMITTED BY: *[Signature]*
 SAN DIMAS REGIONAL ENGINEER



P.C. 5442 PAGE 2

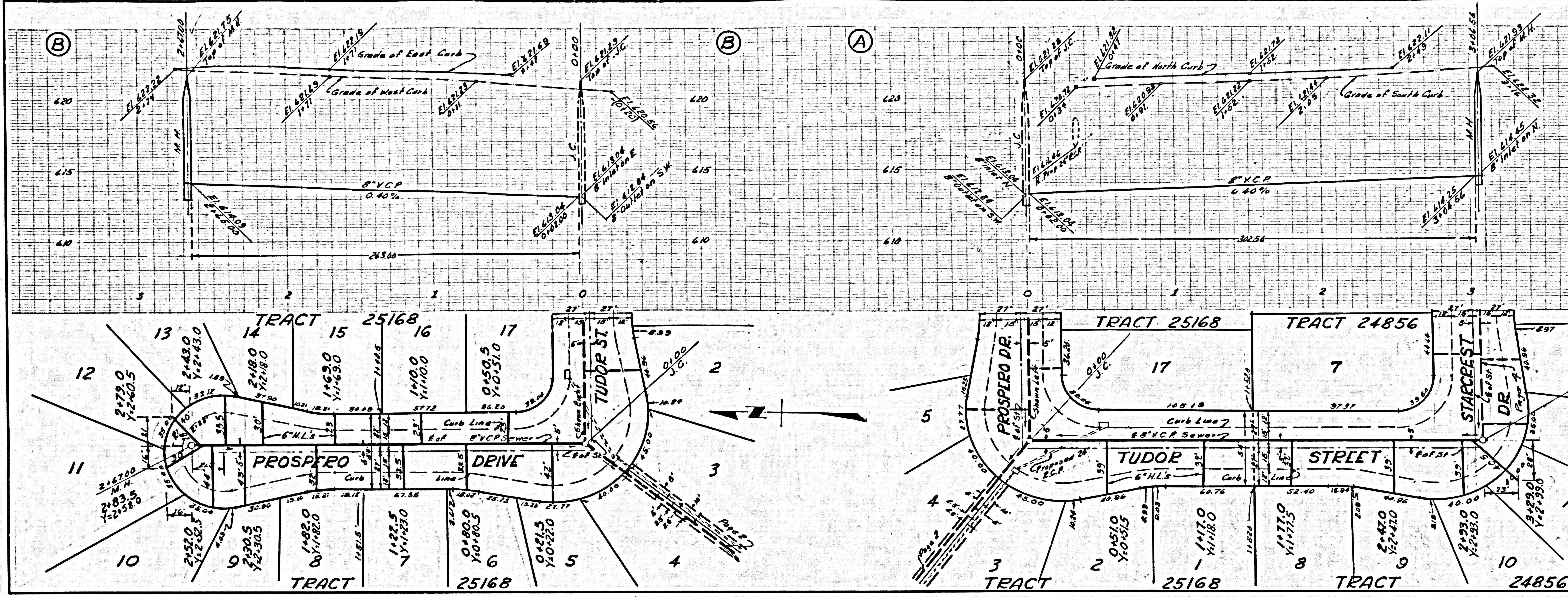
NO CHARGE FOR CONNECTIONS

29,522

U.S.G. 1960 CAL. STATE PRINTING DIV.

NO CHARGE FOR CONNECTIONS

29,523



NO CHARGE FOR CONNECTIONS

29,524

