

LA PUENTE BLDG. DIST. NO. 2.02

PROFILE ALIGNMENT AND GRADE OF P.C. 5445
 SANITARY SEWERS PAGE 1
 TO BE CONSTRUCTED IN

BENCH MARK: S.G. 1096 RESET
 Road Dept. B.M. Tag in West Curb of Sunset Avenue,
 2'3" North of North Edge of Catch Basin at S.W. Cor.
 of Sunset Avenue & Temple Avenue & 70' S. & 40'
 West of E intersection. (PUENTE QUAD.)
 ELEVATION = 308.754 1955 Adj.

- NOTES:
1. PROVIDE STAKES ON THE PROPERTY LINE OR PROPERTY LINES PRODUCED AT RIGHT ANGLES TO THE SEWER LINE AT THE CENTER LINE OF EACH MANHOLE.
 2. NO REPRESENTATIVE OF THE CITY ENGINEER WILL SURVEY OR LAY OUT ANY PORTION OF THE WORK.
 3. THE OWNER OR HIS AUTHORIZED REPRESENTATIVE SHALL FURNISH THE CITY ENGINEER WITH GRADE SHEETS AND STATIONING FOR ALL HOUSE LATERALS AND Y BRANCHES AND SHALL PROVIDE STAKES FOR THEM AT THEIR PROPER LOCATIONS WITH STATIONING PLAINLY MARKED. ANY CHANGE IN LOCATION SHALL BE REQUESTED IN WRITING BY THE OWNER OR HIS REPRESENTATIVE.
 4. THE PRIVATE ENGINEER SHALL FURNISH THE HOUSE LATERAL DEPTH AT THE PROPERTY LINE BELOW THE TOP OF CURB ELEVATION FOR EACH HOUSE LATERAL ON THE GRADE SHEET.
 5. NO REVISIONS SHALL BE MADE IN THESE PLANS WITHOUT THE APPROVAL OF THE CITY ENGINEER.
 6. USE STANDARD MANHOLE FRAMES AND COVERS, S-117.
 7. USE STANDARD STRENGTH PIPE.
 8. USE CHAMFERED OR "WEDGE-LOCK" OR "SPREAD-BEAT" FOR ALL V.C.P. JOINTS PER SPEC., SECT. 20 & 41.
 9. RESURFACE ALL TRENCH WITHIN PAVED AREA TO MEET L.A. COUNTY ROAD DEPT. OR CALIF. STATE HIGHWAY REQUIREMENTS IN ACCORDANCE WITH PERMITS.
 10. ENCASE FOUR FEET OF SEWER AT POINTS OF INTERFERENCE WITH POLES, CASE III, S-172.
 11. HOUSE LATERALS TO BE CONSTRUCTED WITH INVERTS AT PROPERTY LINE $\frac{1}{2}$ FEET BELOW CURB GRADE EXCEPT AS NOTED.
 12. ALL STRUCTURES SHALL BE BRICK SEWER STRUCTURES, S-104.
 13. FOR ALLOWABLE LEAKAGE TEST USE FORMULA NO. 1 SPEC., SEC. 54.
 14. MANHOLE TOPS IN UNIMPROVED RIGHTS-OF-WAY TO BE SIX INCHES ABOVE FINISHED GRADE.
 15. THE CONTRACTOR SHALL NOTIFY THE CONSTRUCTION & BROOM BRUSH DIVISION BY TELEPHONE, MADISON 9-470, EXT. 241, AT LEAST TWENTY-FOUR HOURS BEFORE STARTING ANY WORK UNDER THIS CONTRACT.
 16. STANDARD SPECIFICATIONS DATED JAN. 1, 1960 APPLY IN THE CONSTRUCTION OF THIS PROJECT.

TRACT No 18788
 PRIVATE CONTRACT NO. 5445

W.S. 30
 1 SHEET; 2 PAGES

SCALE: HORIZ. 1" = 40' VERT. 1" = 4' JANUARY, 1960

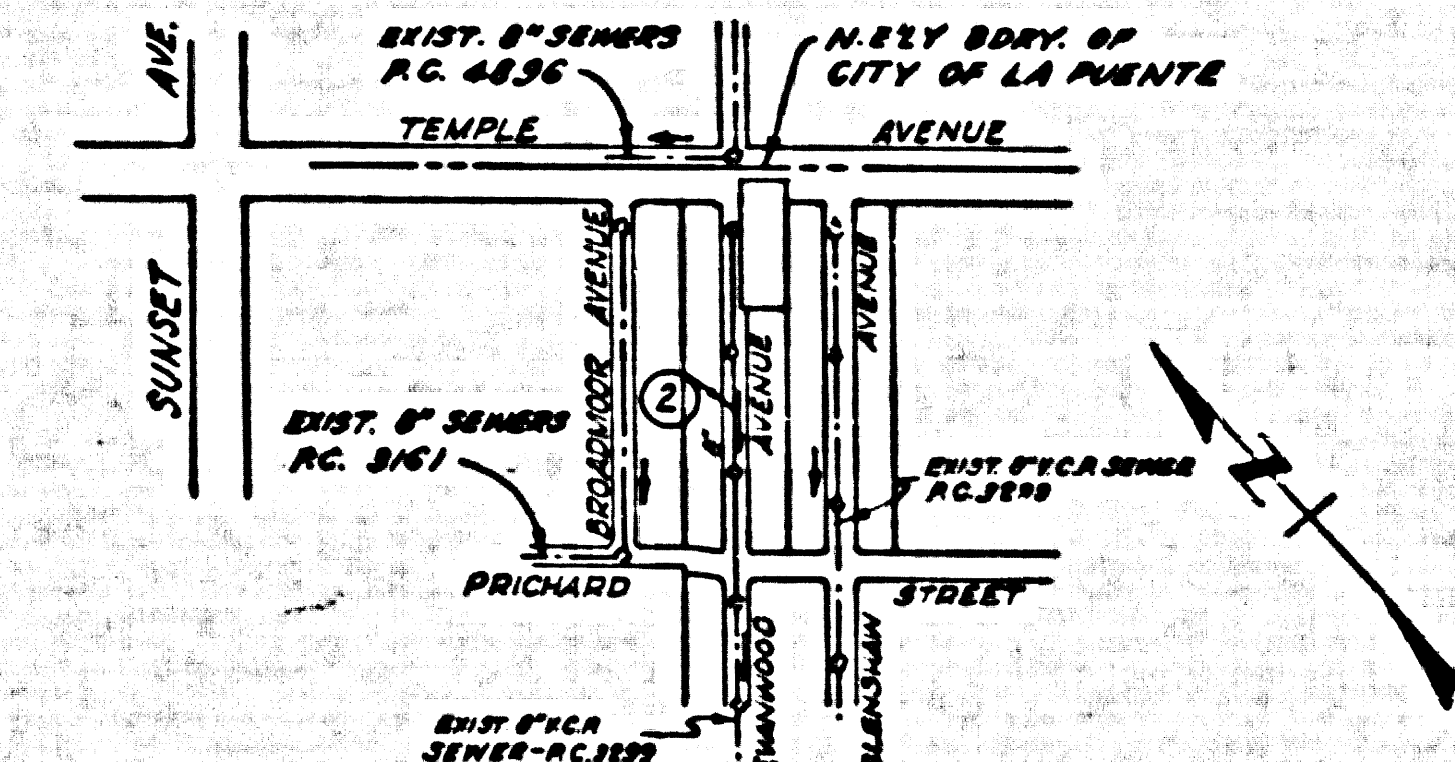
PREPARED IN THE OFFICES OF
 A. RICHARD BROWN, JR.
 7532 COMMONWEALTH AVENUE, BUENA PARK, CALIF.
 PLATE: LA PUENTE 5445
 BY: *A. Richard Brown*
 REG. C. E. NO. 2223

29,017

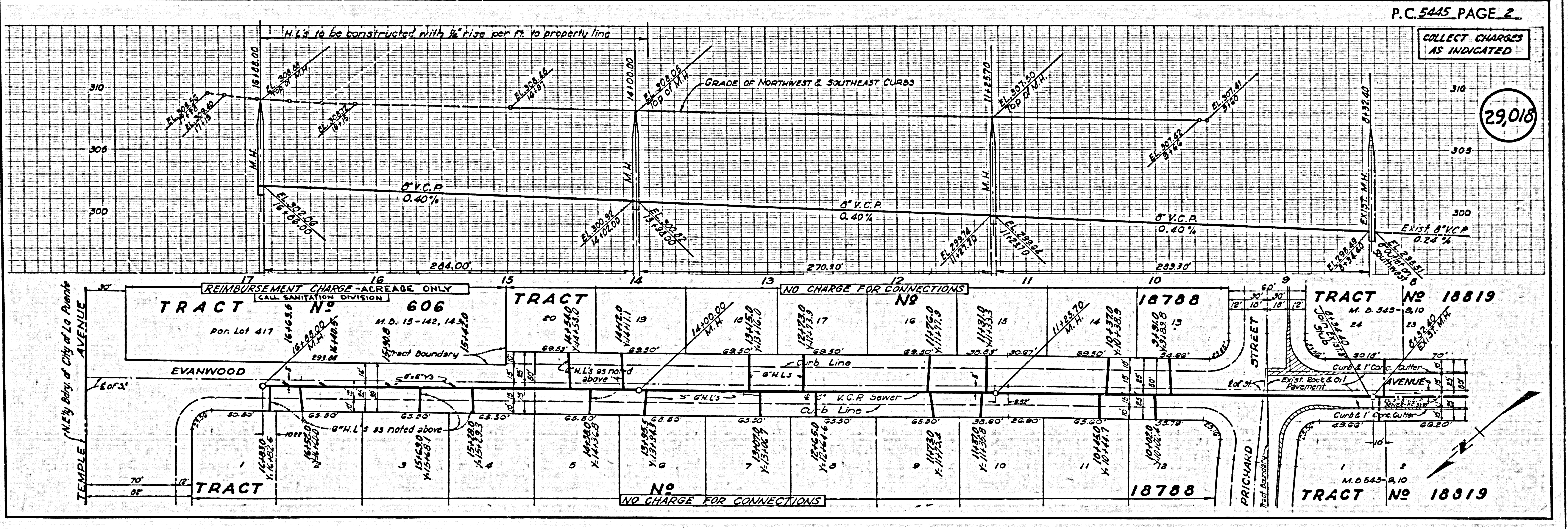
NOTE:
 GRADES TO WHICH THE IMPROVEMENT IS TO BE CONSTRUCTED ARE SHOWN ON PLANS AND PROFILE. GRADE POINTS FOR TOP OF CURBS, CENTER LINE OF STREET, OR CENTER LINE OF ALLEYS ARE SHOWN BY CIRCLES ON PROFILES. AT ALL POINTS BETWEEN DESIGNATED POINTS THE GRADE SHALL BE ESTABLISHED SO AS TO CONFORM TO A STRAIGHT LINE BETWEEN THESE DESIGNATED POINTS.
 ELEVATIONS ARE IN FEET ABOVE U.S.C. & G.S. MEAN LEVEL DATUM OF 1929.
 THIS DRAWING AND THE DATA HEREON ARE HEREBY MADE A PART OF THE SPECIFICATIONS.
 BEFORE WORK CAN BE STARTED, THE CONTRACTOR MUST OBTAIN A PERMIT TO EXCAVATE IN THE CITY OF LA PUENTE FROM THE L.A. COUNTY ROAD DEPT., DISTRICT OFFICE NO. 1, AND MAKE A DEPOSIT WITH THE CITY OF LA PUENTE, AS SET FORTH UNDER ARTICLE 14, CHAPTER 1, LA PUENTE, SUFFICIENT TO COVER THE COST OF CONSTRUCTION INSPECTION AND RECORD PLANS.
 APPROVAL OF THIS PLAN BY THE CITY OF LA PUENTE DOES NOT CONSTITUTE A REPRESENTATION AS TO THE ACCURACY OF THE LOCATION OF OR THE EXISTENCE OR NON-EXISTENCE OF ANY UNDERGROUND UTILITY PIPE, OR STRUCTURE WITHIN THE LIMITS OF THIS PROJECT. THIS NOTE APPLIES TO ALL PAGES.
 IF WORK IS TO BE DONE IN A STATE HIGHWAY, A PERMIT MUST BE OBTAINED FROM THE STATE OF CALIFORNIA, DIVISION OF HIGHWAYS, 138 SOUTH SPRING STREET.

CITY OF LA PUENTE, CALIFORNIA
 APPROVED, JOHN A. LAMME, CITY ENGINEER
 APPROVED, C.R. COMPTON CHIEF ENGINEER
 BY: *J. A. Lamme* ASY. SANITATION ENGINEER
 BY: *C. R. Compton* OFFICE ENGINEER
 CHECKED BY: *J. C. White* 3-12-60
 OFFICE OF CITY ENGINEER, REG. C. E. NO. 2406

COLLECT CHARGES AS INDICATED
 71.79 C. Brown 3-17-60



INDEX MAP
 SCALE: 1" = 600'
 TRACT No 18788
 P.C. 5445
 CITY OF LA PUENTE
 APPROVED: *John A. Lamme*
 CITY MANAGER



P.C. 5445 PAGE 2

COLLECT CHARGES AS INDICATED

29,018