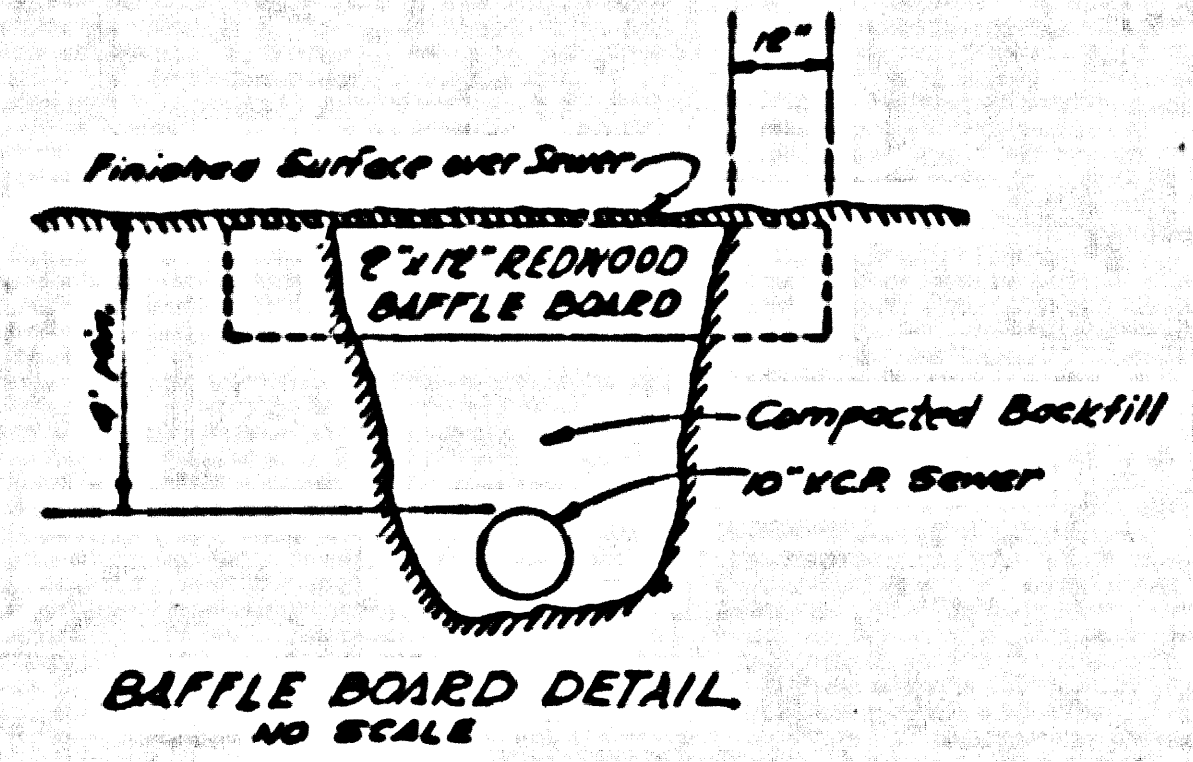


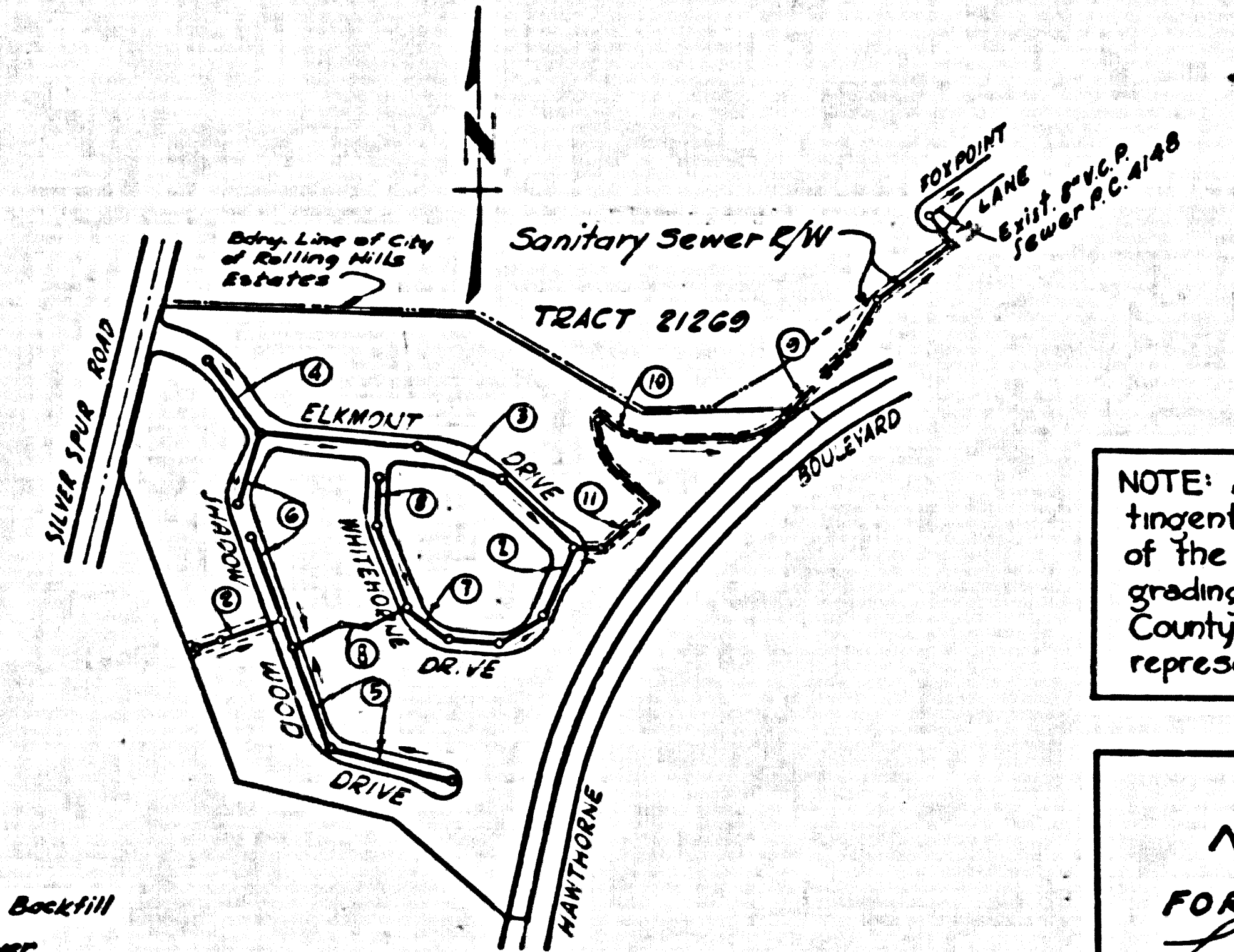
County Surveyor B.M. USGS 3rd. disc. stamped
Q786-1946 set flush with ground 45.2' N. of E
of Palos Verdes Drive North 47.4 East of E of
Narbonne Avenue. Elev. 355.518

NOTE: County Surveyor B.M. 36-2 Co. precise Survey
1953 Adjustable 355.583. Add 0065 to all elevations
shown hereon to agree with 1953 adjustment.

NOTES:
1. Each end of Baffle board will extend one foot
into undisturbed ground.
2. The upper layer of baffle to be one foot
minimum top soil. Top soil shall be turned
in place & planted with mustard & rye grass
seed and adequately watered until growth
is retained.
3. Baffle boards shall be spaced so that
the top of the lower board shall be level
with the bottom of the next higher board.



INDEX MAP
TRACT N° 24719
P.C. 5447
SCALE: 1" = 400'



NOTE: Approval hereby given con-
tingent upon a field investigation
of the completed sewer and all
grading relating hereto by the
County Engineer or his authorized
representatives.

NO CHARGE
FOR CONNECTIONS
A. L. Curtis 11-2-60

Revision:
Moved MH from 1+77.00 to
1+88.00 page E, sec. B.
Approved: Edward J. Smith
Reg. C.E. No. 7267

DOUBLE SCALE
LOMITA BLDG. DIST. NO. 7.I

PROFILE ALIGNMENT AND GRADE OF
SANITARY SEWERS
TO BE CONSTRUCTED IN
P.C. 5447
PAGE 1
J.N. 0352.91

TRACT N° 24719
PRIVATE CONTRACT NO. 5447

W.S. 27
6 SHEETS, 11 PAGES

SCALE: VERT. 1" = 4'
HORIZ. 1" = 40'
February, 1960

PREPARED IN THE OFFICES OF
ENGINEERING SERVICE CORPORATION

30352

FOR LEGEND SEE PLAN NO. S-A-64

- NOTES:
1. PROVIDE STAKES ON THE PROPERTY LINE OR PROPERTY LINES PRODUCED AT RIGHT ANGLES TO THE SEWER LINE AT THE CENTER LINE OF EACH MANHOLE.
 2. NO REPRESENTATIVE OF THE COUNTY ENGINEER WILL SURVEY OR LAY OUT ANY PORTION OF THE WORK.
 3. THE OWNER OR HIS AUTHORIZED REPRESENTATIVE SHALL FURNISH THE COUNTY ENGINEER WITH GRADE SHEETS AND STATIONING FOR ALL HOUSE LATERALS AND Y BRANCHES AND SHALL PROVIDE STAKES FOR THEM AT THEIR PROPER LOCATIONS WITH STATIONING PLAINLY MARKED. ANY CHANGE IN LOCATION SHALL BE REQUESTED IN WRITING BY THE OWNER OR HIS REPRESENTATIVE.
 4. THE PRIVATE ENGINEER SHALL FURNISH THE HOUSE LATERAL DEPTH AT THE PROPERTY LINE BELOW THE TOP OF CURB ELEVATION FOR EACH HOUSE LATERAL ON THE GRADE SHEET.
 5. NO REVISIONS SHALL BE MADE IN THESE PLANS WITHOUT THE APPROVAL OF THE COUNTY ENGINEER.
 6. USE STANDARD MANHOLE FRAMES AND COVERS, 6-117, EXCEPT AS NOTED.
 7. USE STANDARD STRENGTH PIPE EXCEPT AS NOTED.
 8. USE CEMENT MORTAR OR "WEDGE-LOCK" OR "SPREAD-SEAL" FOR ALL V.C.P. JOINTS PER SPECS., SECS. 56 & 57.
 9. REINFORCE ALL TRENCH WITHIN PAVED AREA TO MEET L.A. COUNTY ROAD DEPT. OR CALIF. STATE HIGHWAY REQUIREMENTS IN ACCORDANCE WITH PERMITS.
 10. ENCASE FOUR FEET OF SEWER AT POINTS OF INTERFERENCE WITH POLES, CASE NO. 5-172.
 11. HOUSE LATERALS TO BE CONSTRUCTED WITH INVERTS AT PROPERTY LINE 6 FEET BELOW CURB GRADE EXCEPT AS NOTED.
 12. ALL STRUCTURES SHALL BE BRICK SEWER STRUCTURES, 5-104, EXCEPT AS NOTED.
 13. FOR ALLOWABLE LEAKAGE TEST USE FORMULA NO. 1, SPECS., SEC. 54.
 14. MANHOLE TOPS IN UNIMPROVED RIGHTS-OF-WAY TO BE SIX INCHES ABOVE FINISHED GRADE.
 15. THE CONTRACTOR SHALL NOTIFY THE CONSTRUCTION & STORM DRAIN DIVISION BY TELEPHONE, MADISON 6-212, EXT. 0/357 AT LEAST THIRTYFOUR HOURS BEFORE STARTING ANY WORK UNDER THIS CONTRACT.
 16. (a) NO CONSTRUCTION SHALL BE PERMITTED IN FILLED AREAS UNLESS ACCEPTABLE CERTIFICATION IS SUBMITTED TO THE CONSTRUCTION DIVISION OF THE COUNTY ENGINEER DEPARTMENT THAT CONSTRUCTION IS GREATER THAN 80%.
(b) IF CONSTRUCTION IS LESS THAN 80%, THE SEWER MUST BE COVERED AS SHOWN ON PLAN.
(c) IF CONSTRUCTION IS GREATER THAN 80%, GRADING AND SPECIAL MANHOLE BASES ARE NOT REQUIRED HOWEVER, JOINT COMPOUNDS MUST BE SUBSTITUTED FOR CEMENT MORTAR JOINTS IN FILLED AREAS.
 17. STANDARD SPECIFICATIONS DATED MAY 18/1960 APPLY IN THE CONSTRUCTION OF THIS PROJECT.

ENGINEERING SERVICE CORPORATION
1127 W. WASHINGTON BLVD.
LOS ANGELES 15, CALIF. RI. 9-7281

REVISIONS		TRACED BY
		G.S.
		DES'G'D BY
		C.M.R.
		CK'D BY
		A.M.
		SUBMITTED

W. O. NO.	DWG. NO.	DATE	SCALE	L. B.	P. B.
6681-119		FEB. 1960	As Noted		

NOTE:
GRADES TO WHICH THIS IMPROVEMENT IS TO BE CONSTRUCTED ARE SHOWN ON PLANS AND PROFILES. GRADE POINTS FOR TOP OF CURB, CENTER LINE OF STREET, OR CENTER LINE OF ALLEY ARE SHOWN BY CIRCLES ON PROFILES. AT ALL POINTS BETWEEN DESIGNATED POINTS THE GRADE SHALL BE ESTABLISHED SO AS TO CONFORM TO A STRAIGHT LINE BETWEEN SAID DESIGNATED POINTS.
ELEVATIONS ARE IN FEET ABOVE U.S.C. & G.S. SEA LEVEL, DATUM OF 1929.
THIS DRAWING AND THE DATA HEREON ARE HEREBY MADE A PART OF THE SPECIFICATIONS.
WORK SHALL BE CONSTRUCTED ACCORDING TO SPECIFICATIONS ON FILE IN THE OFFICE OF THE COUNTY ENGINEER AND 5414M BE PROSECUTED ONLY IN THE PRESENCE OF THE COUNTY ENGINEER.
BEFORE WORK CAN BE STARTED, THE CONTRACTOR MUST OBTAIN A PERMIT TO EXCAVATE IN COUNTY STREETS FROM THE L.A. COUNTY ROAD DEPT., DISTRICT OFFICE NO. 3, AND PAY A FEE TO THE COUNTY ENGINEER, ROOM 534 FARM ANGLEMAN BUILDING, 338 S. BRIDGEMAN AVENUE TO COVER THE COST OF CONSTRUCTION INSPECTION AND RECORD PLANS.
APPROVAL OF THIS PLAN BY THE COUNTY OF LOS ANGELES DOES NOT CONSTITUTE A REPRESENTATION AS TO THE ACCURACY OF THE LOCATION OF OR THE EXISTENCE OR NON-EXISTENCE OF ANY UNDERGROUND UTILITY PIPE, OR STRUCTURE WITHIN THE LIMITS OF THE PROJECT. THIS NOTE APPLIES TO ALL PAGES.
IF WORK IS TO BE DONE IN A STATE HIGHWAY, A PERMIT MUST BE OBTAINED FROM THE STATE OF CALIFORNIA, DIVISION OF HIGHWAYS, 128 SOUTH SPRING STREET.

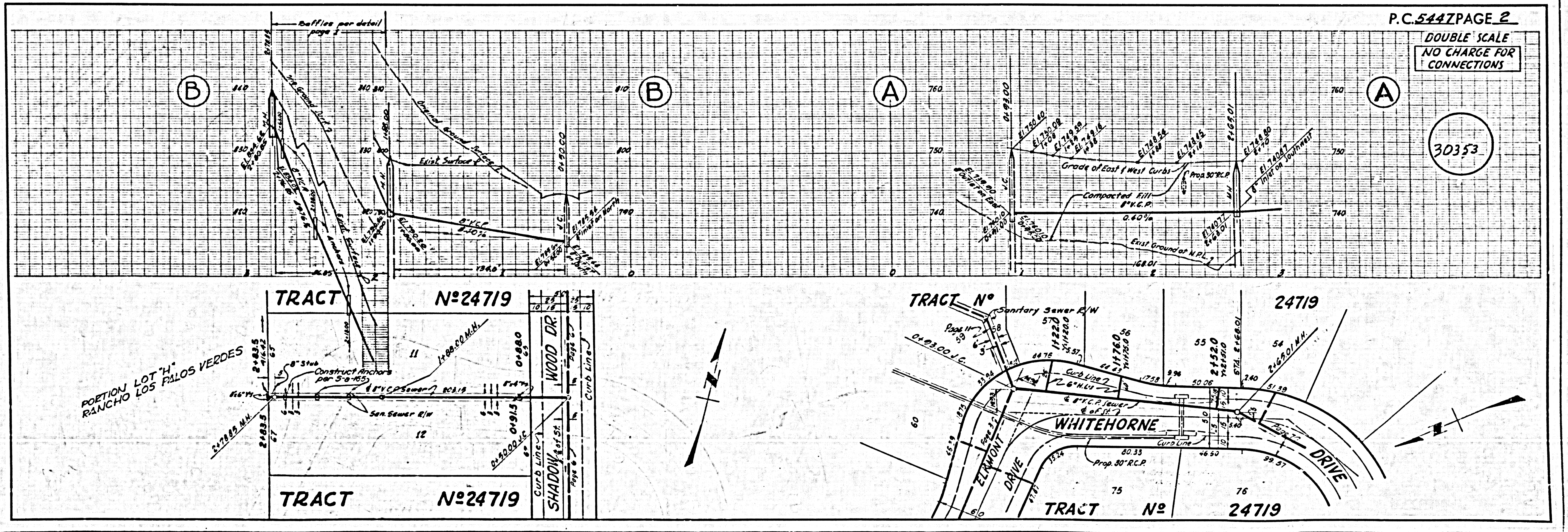
COUNTY OF LOS ANGELES, CALIFORNIA

APPROVED, JOHN A. LAMBE, COUNTY ENGINEER
APPROVED, C. C. COUPTON, CHIEF ENGINEER

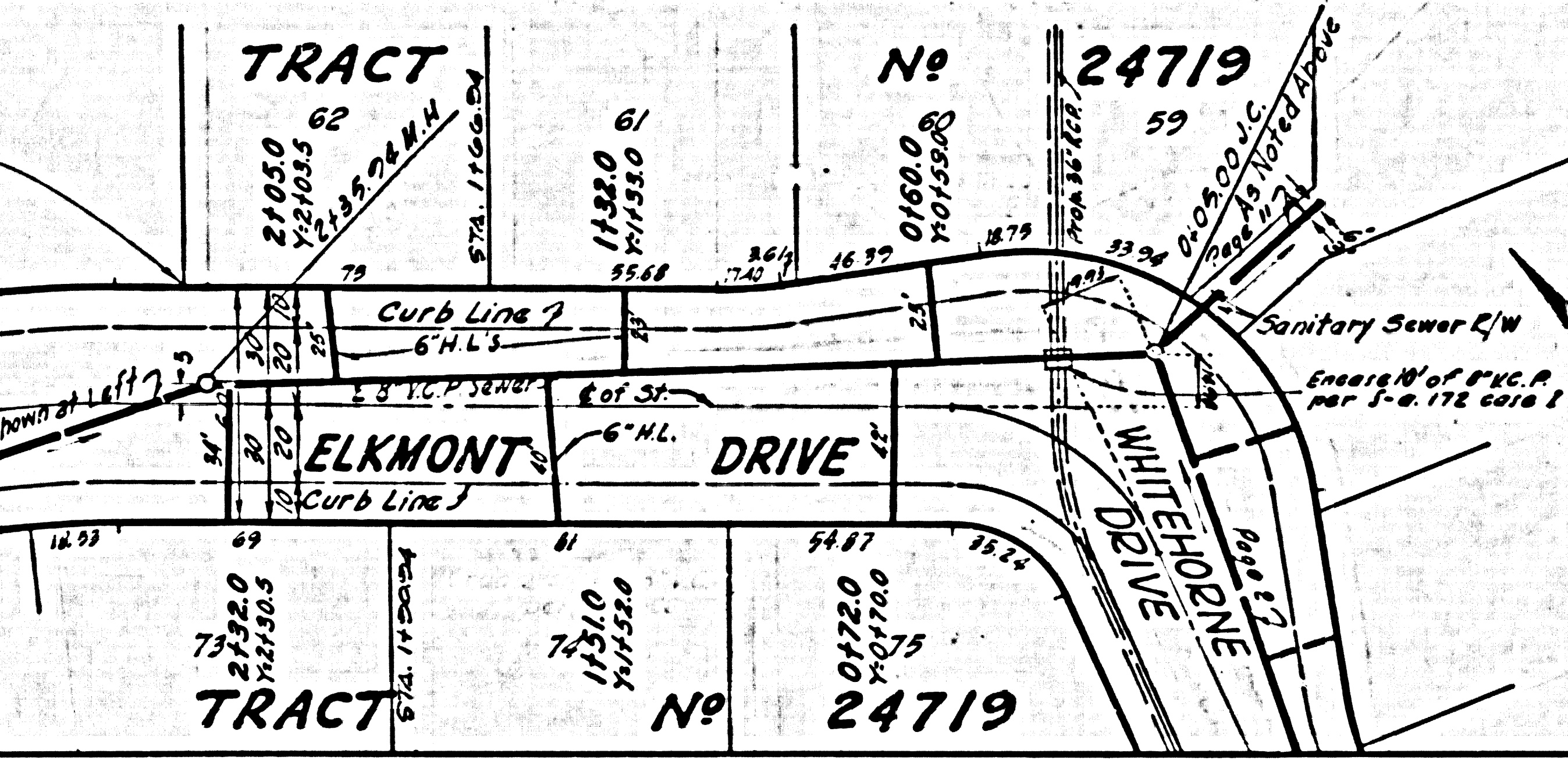
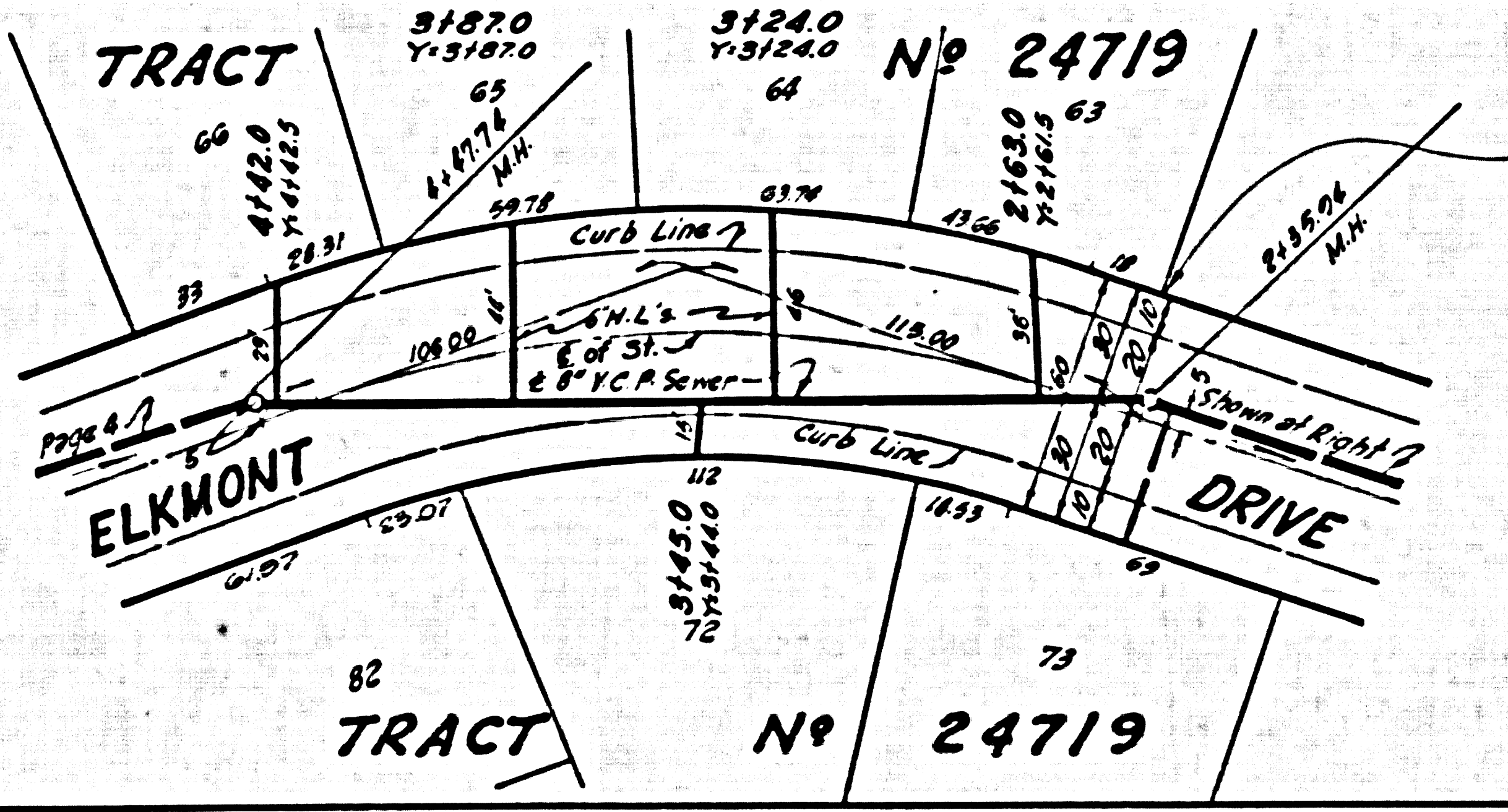
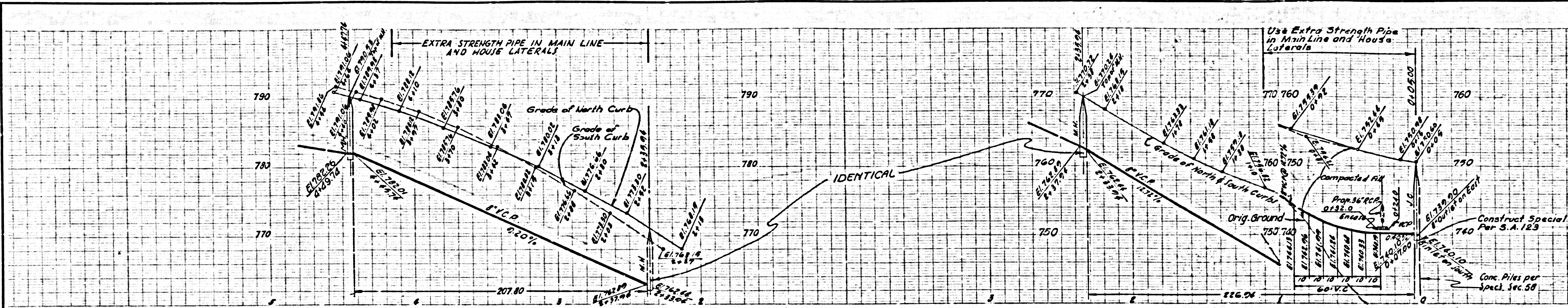
BY: C. E. Smith, ASST. SANITATION ENGINEER
BY: J. H. Anderson, OFFICE ENGINEER

CHECKED BY: J. K. Under, 11-14-60
OFFICE OF COUNTY ENGINEER, REG. C. E. NO. 2166

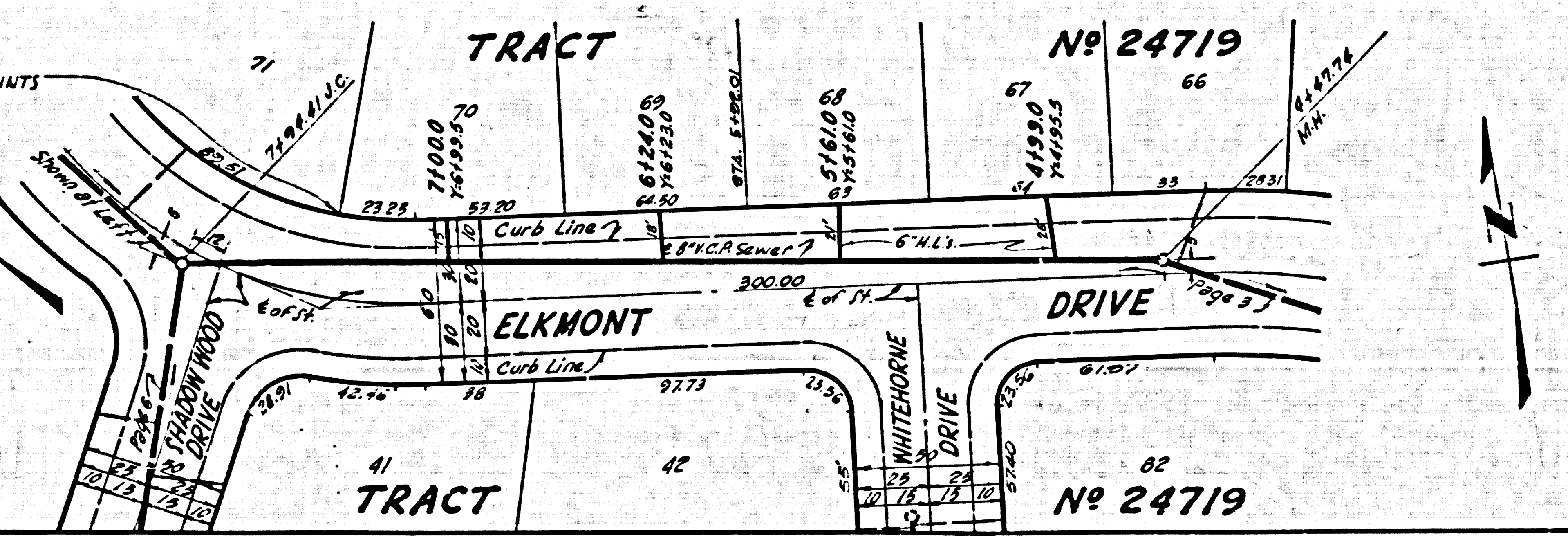
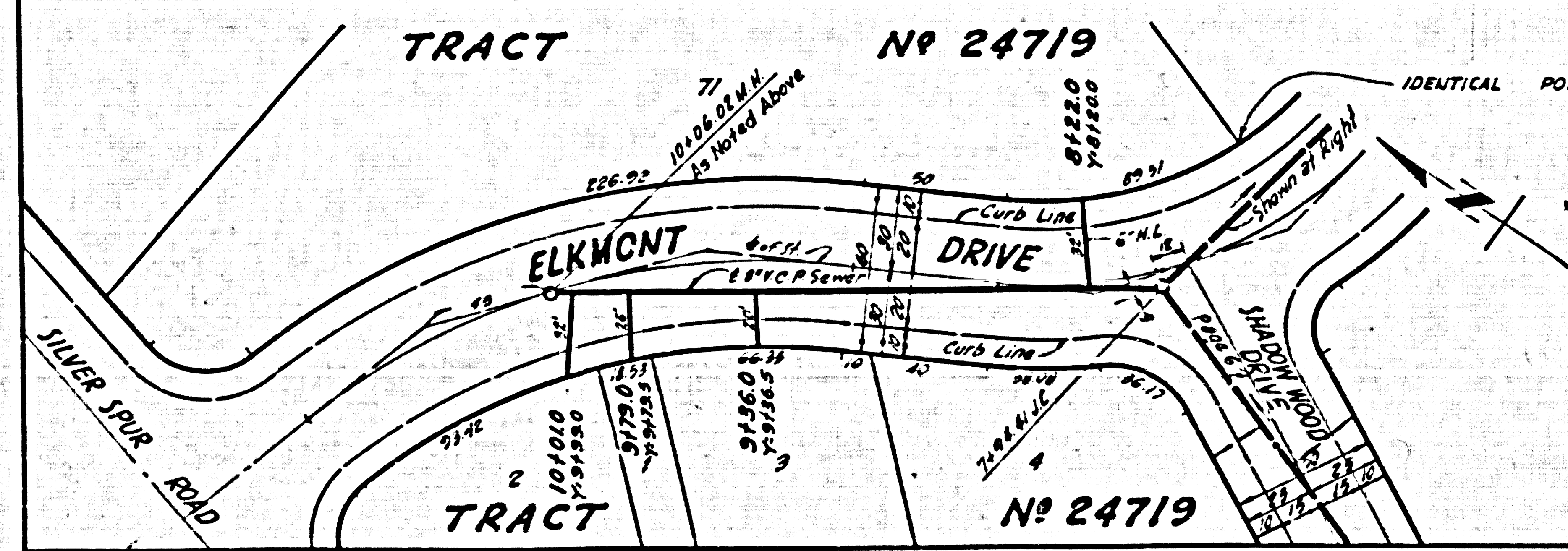
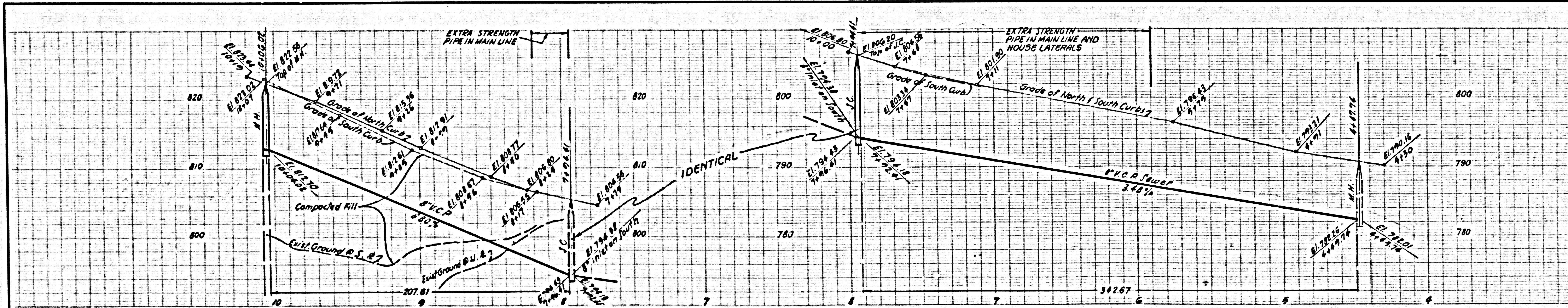
Submitted: Jack C. Lansing, Palos Verdes-Centennial Valley Regional Engineer



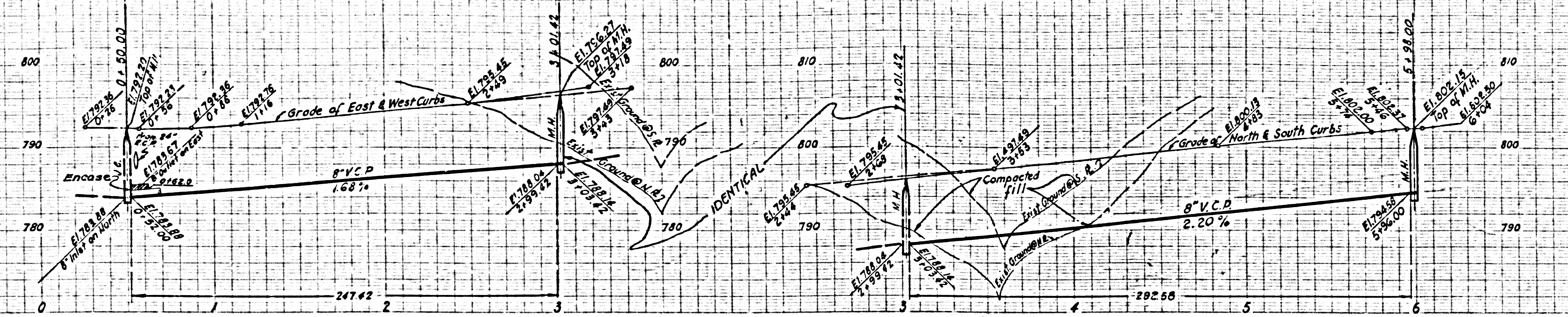
30354



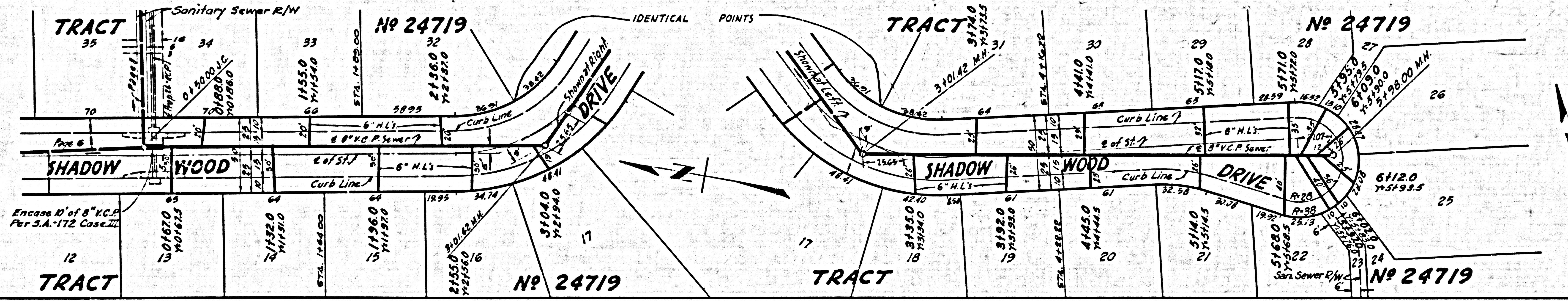
30355



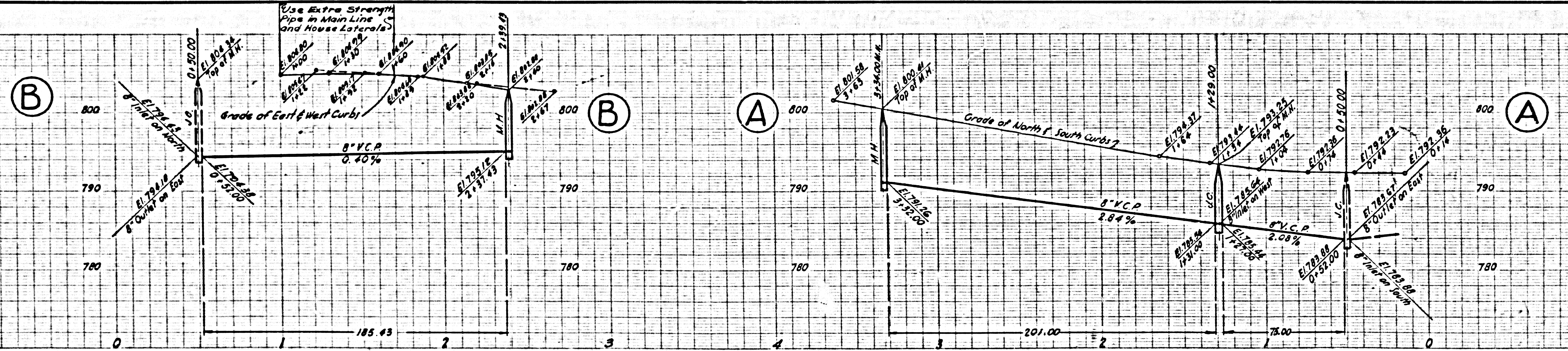
DOUBLE SCALE
NO CHARGE FOR
CONNECTIONS



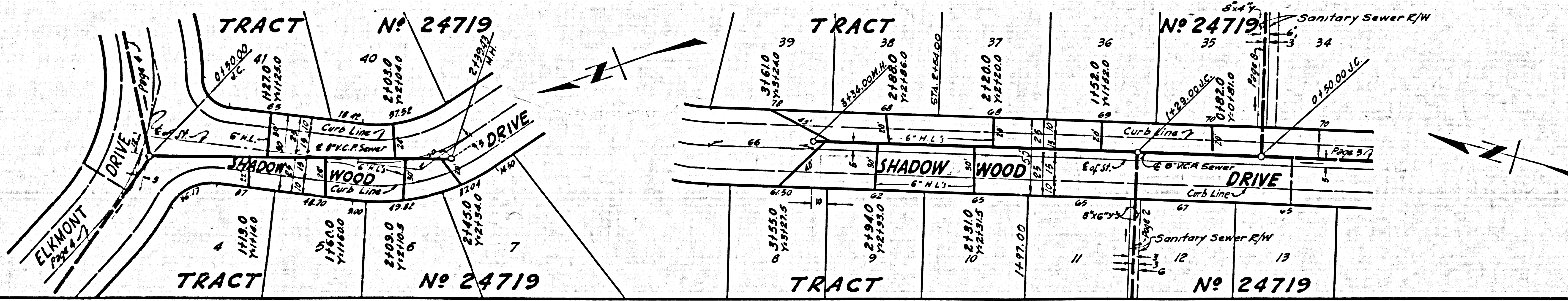
30356



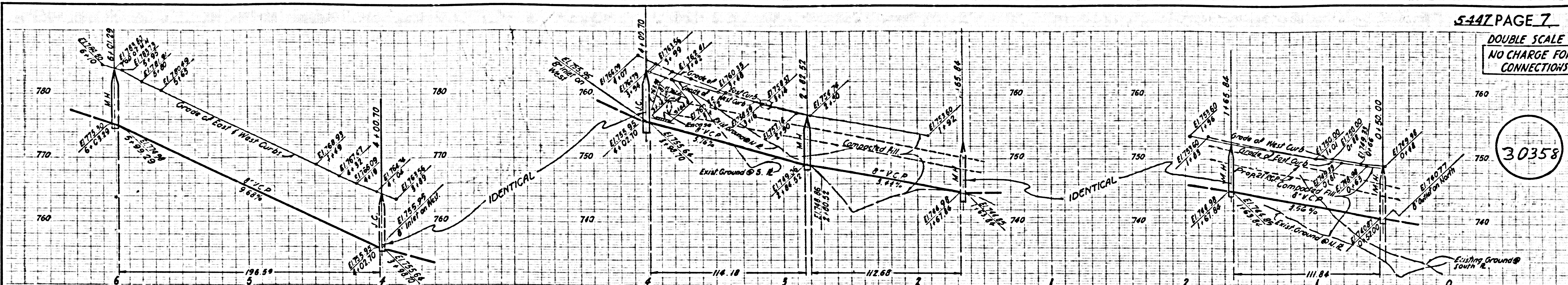
DOUBLE SCALE
NO CHARGE FOR
CONNECTIONS



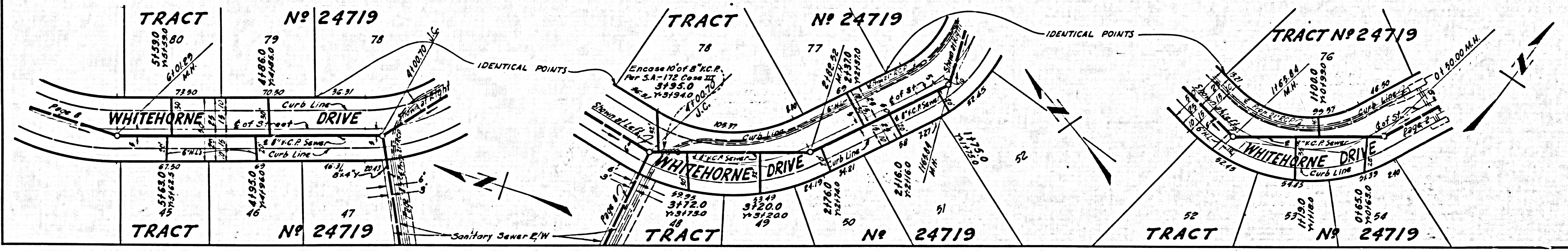
30357



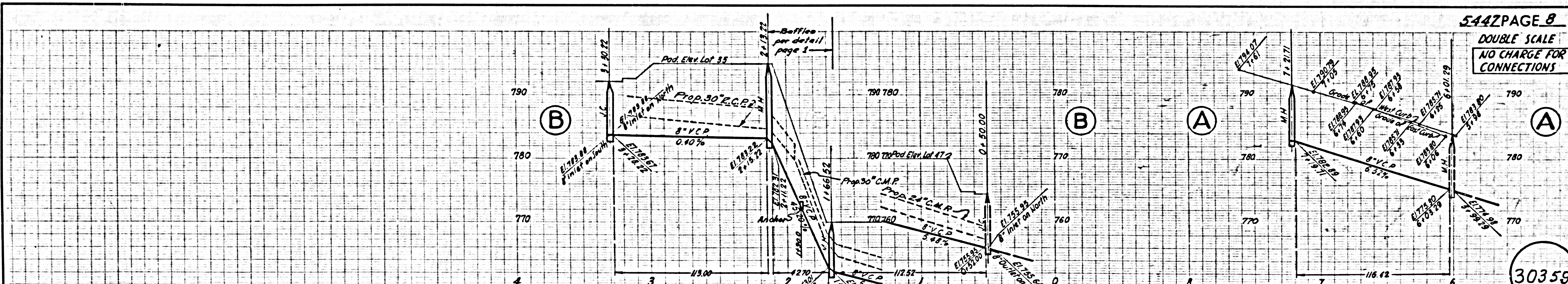
DOUBLE SCALE
NO CHARGE FOR
CONNECTIONS



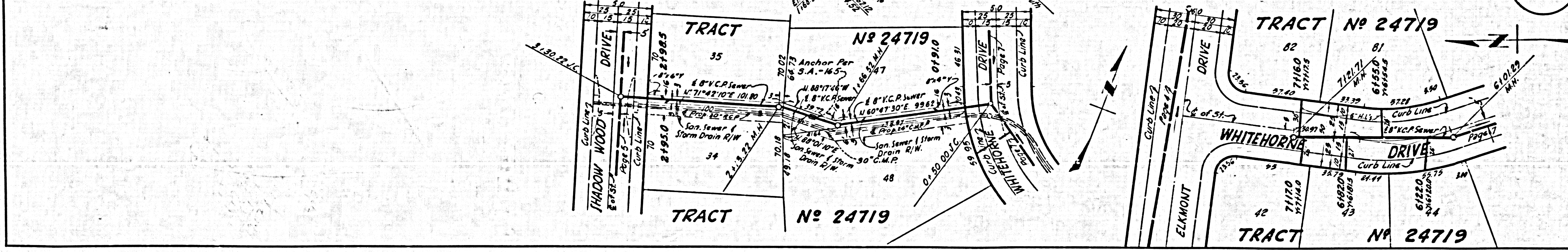
30358

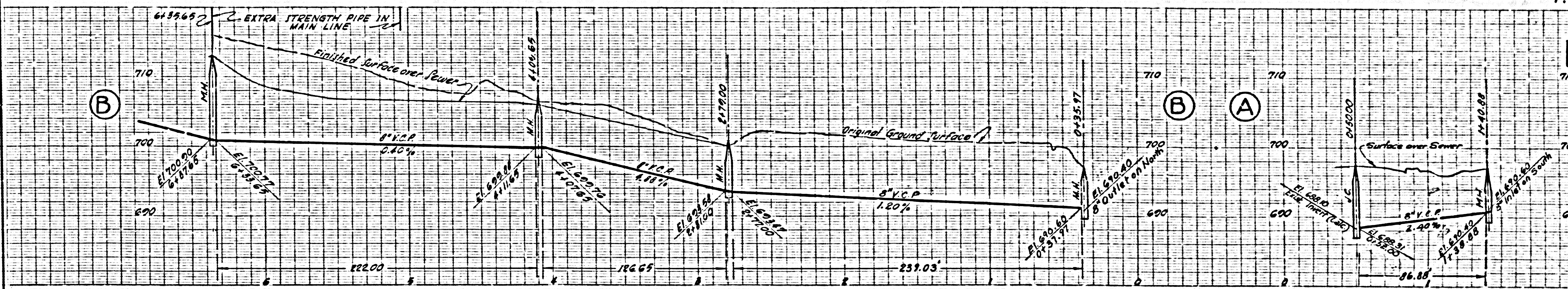


DOUBLE SCALE
NO CHARGE FOR
CONNECTIONS



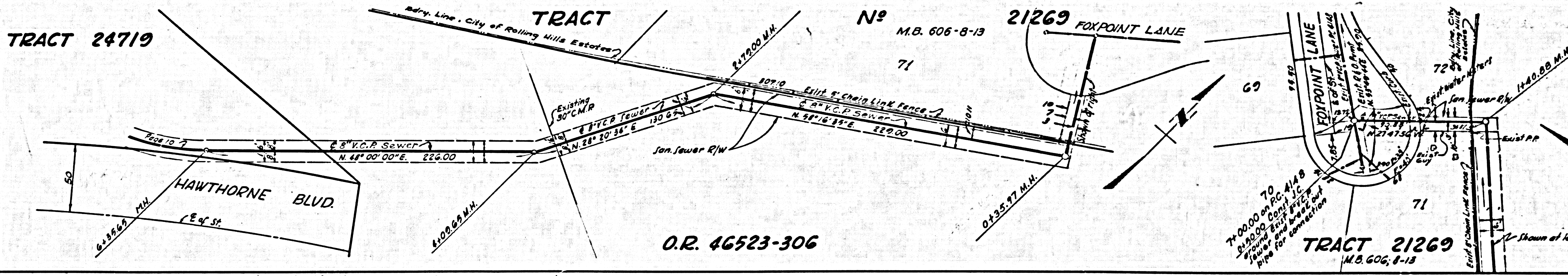
30359





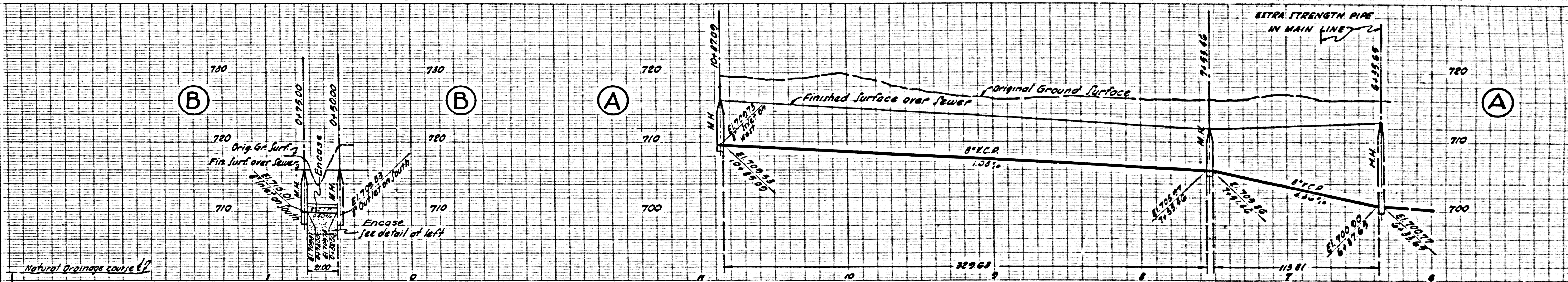
DOUBLE SCALE
NO CHARGE FOR
CONNECTIONS

30360



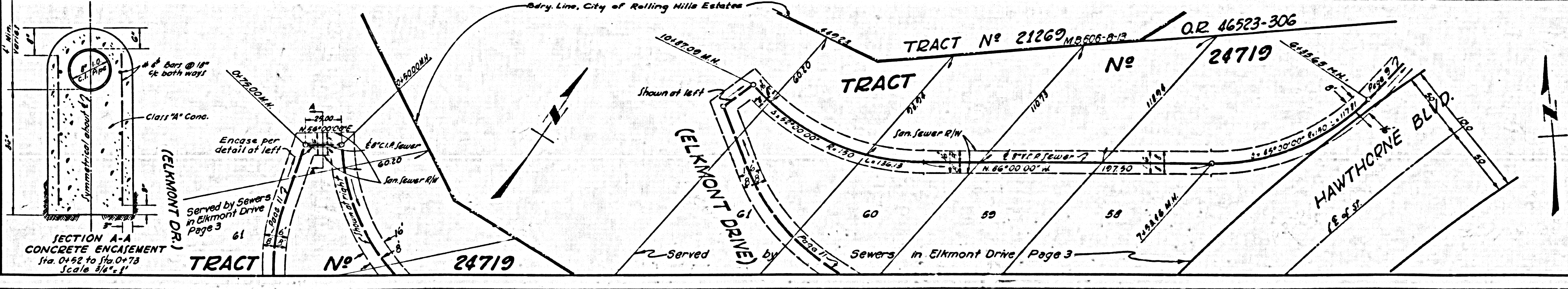
O.R. 46523-306

TRACT 21269
M.B. 606, 8-13



DOUBLE SCALE
NO CHARGE FOR
CONNECTIONS

30361



SECTION A-A
CONCRETE ENCASEMENT
1/4\"/>

TRACT No. 24719

TRACT No. 21269 M.B. 606, 8-13

O.R. 46523-306

TRACT No. 24719

DOUBLE SCALE
NO CHARGE FOR
CONNECTION

30362

Revision: Add at Sta.
2500.00 to avoid
interference with
8" CMP
Approved: E. J. ...
Checked: J. ...
Rep. C. E. ...

