

BENCH MARK S.G. 14. L. & N. in center of headwall 25 N. E. of Broadway Ave. & 15' E. of Los Angeles St. (Rockvale)  
Elev. 563.988

SAN DIMAS BLDG. DIST. NO. 10

PROFILE ALIGNMENT AND GRADE OF **P.C. 5448**  
**SANITARY SEWERS** PAGE 1

CONSTRUCTED IN  
**ALOSTA AVENUE**  
**AND**  
**SANITARY SEWER RIGHTS OF WAY**  
**PRIVATE CONTRACT NO. 5448**

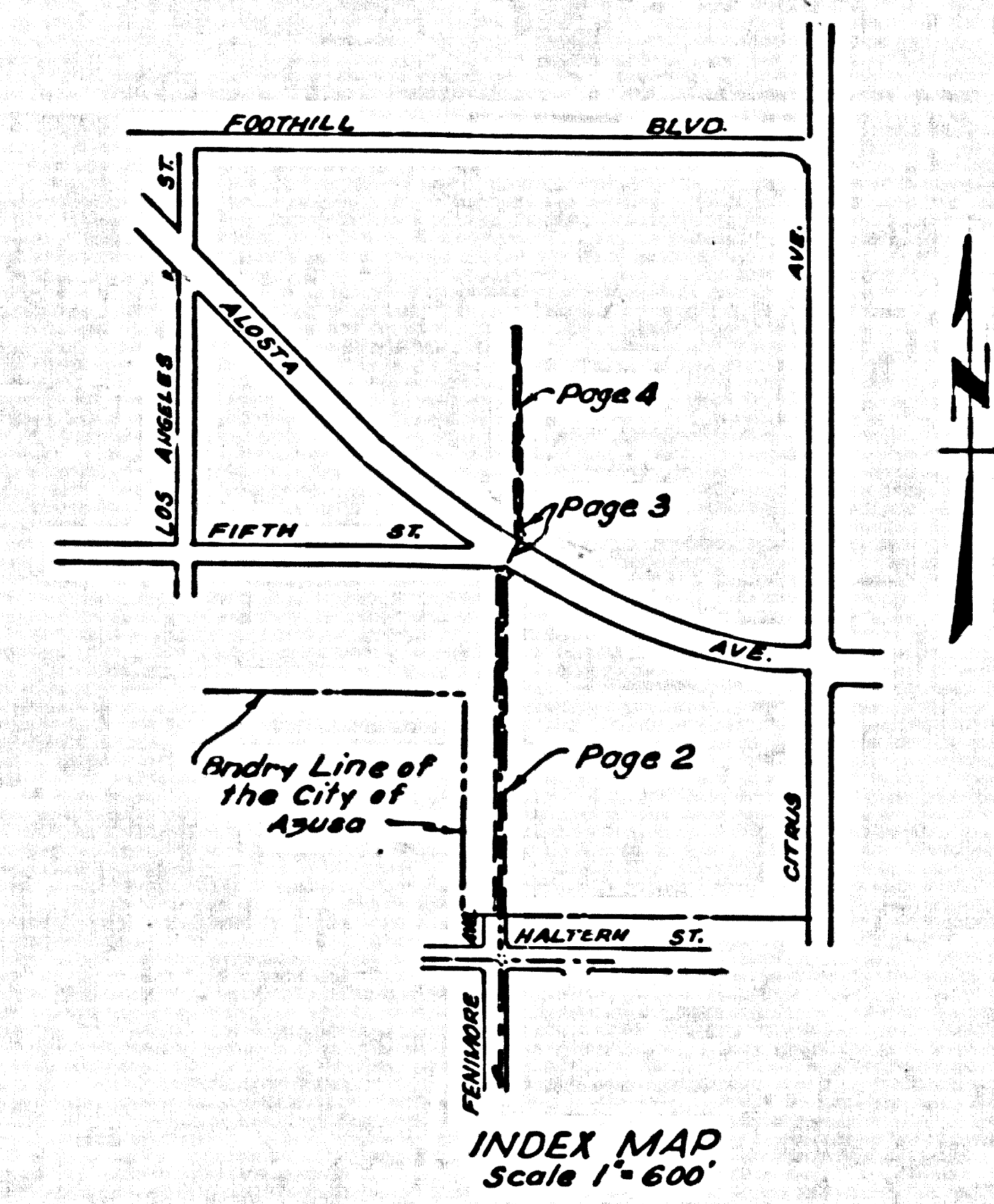
W.S. 47  
**2 SHEETS, 4 PAGES**  
SCALE: VERT. 1"=4' HORIZ. 1"=40' MARCH, 1980  
PREPARED IN THE OFFICES OF

**JENNINGS ENGINEERING CO.**

By B. J. Jennings  
REG. C. E. NO. 12333

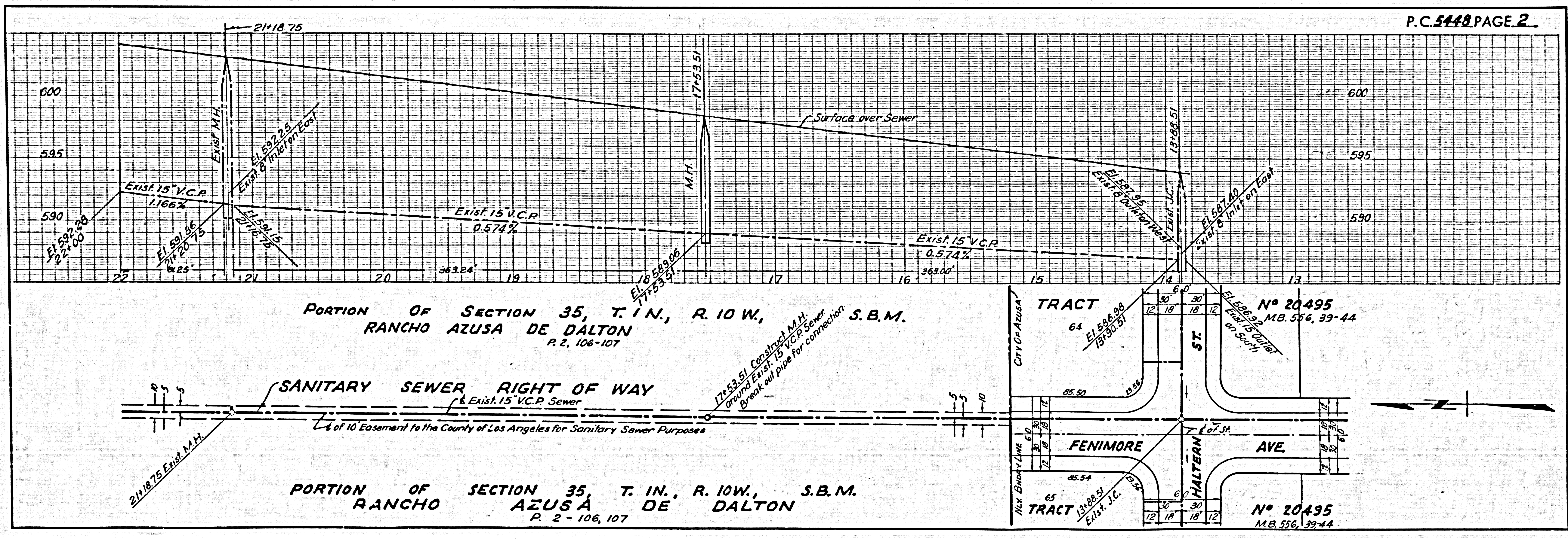
FOR LEGEND SEE PLAN NO. S-A-64

- NOTES:
1. PROVIDE STAKES ON THE PROPERTY LINE OR PROPERTY LINES PRODUCED AT RIGHT ANGLES TO THE SEWER LINE AT THE CENTER LINE OF EACH MANHOLE.
  2. NO REPRESENTATIVE OF THE COUNTY ENGINEER WILL SURVEY OR LAY OUT ANY PORTION OF THE WORK.
  3. THE OWNER OR HIS AUTHORIZED REPRESENTATIVE SHALL FURNISH THE COUNTY ENGINEER WITH GRADE SHEETS AND STATIONING FOR ALL HOUSE LATERALS AND V BRANCHES AND SHALL PROVIDE STAKES FOR THEM AT THEIR PROPER LOCATIONS WITH STATIONING PLAINLY MARKED. ANY CHANGE IN LOCATION SHALL BE REQUESTED IN WRITING BY THE OWNER OR HIS REPRESENTATIVE.
  4. THE PRIVATE ENGINEER SHALL FURNISH THE HOUSE LATERAL DEPTH AT THE PROPERTY LINE BELOW THE TOP OF CURB ELEVATION FOR EACH HOUSE LATERAL ON THE GRADE SHEET.
  5. NO REVISIONS SHALL BE MADE IN THESE PLANS WITHOUT THE APPROVAL OF THE COUNTY ENGINEER.
  6. USE STANDARD MANHOLE FRAMES AND COVERS, S-117, EXCEPT AS NOTED.
  7. USE STANDARD STRENGTH PIPE EXCEPT AS NOTED.
  8. USE CEMENT MORTAR OR "WEDGE-LOCK" OR "SPREAD-SEAL" FOR ALL V.C.P. JOINTS PER S.P.C.E., SECS. 26 & 48.
  9. RESURFACE ALL TRENCH WITHIN PAVED AREA TO MEET L.A. COUNTY ROAD DEPT. OR CALIF. STATE HIGHWAY REQUIREMENTS IN ACCORDANCE WITH PERMITS.
  10. ENCASE FOUR FEET OF SEWER AT POINTS OF INTERFERENCE WITH POLLS, CASE NO. S-6-172.
  11. HOUSE LATERALS TO BE CONSTRUCTED WITH INVERTS AT PROPERTY LINE FEET BELOW CURB GRADE EXCEPT AS NOTED.
  12. ALL STRUCTURES SHALL BE BRICK SEWER STRUCTURES, S-6-104, EXCEPT AS NOTED.
  13. FOR ALLOWABLE LEAKAGE TEST USE FORMULA NO. \_\_\_\_\_, S.P.C.E., SEC. 54.
  14. MANHOLE TOPS IN UNIMPROVED RIGHTS-OF-WAY TO BE SIX INCHES ABOVE FINISHED GRADE.
  15. THE CONTRACTOR SHALL NOTIFY THE CONSTRUCTION & STORM DRAIN DIVISION BY TELEPHONE, MADISON 9-47, EXT. 362, AT LEAST TWENTY-FOUR HOURS BEFORE STARTING ANY WORK UNDER THIS CONTRACT.



NOTE:  
GRADES TO WHICH THIS IMPROVEMENT IS TO BE CONSTRUCTED ARE SHOWN ON PLANS AND PROFILES. GRADE POINTS FOR TOP OF CURBS, CENTER LINE OF STREETS, OR CENTER LINE OF ALLEYS ARE SHOWN BY CIRCLES ON PROFILES AT ALL POINTS BETWEEN DESIGNATED POINTS THE GRADE SHALL BE ESTABLISHED SO AS TO CONFORM TO A STRAIGHT LINE DRAWN BETWEEN SAID DESIGNATED POINTS.  
ELEVATIONS ARE IN FEET ABOVE U.S.C. & G.S. SEA LEVEL DATUM OF 1929.  
THIS DRAWING AND THE DATA HEREON ARE HEREBY MADE A PART OF THE SPECIFICATIONS.  
WORK SHALL BE CONSTRUCTED ACCORDING TO SPECIFICATIONS ON FILE IN THE OFFICE OF THE COUNTY ENGINEER AND SHALL BE PROSECUTED ONLY IN THE PRESENCE OF THE COUNTY ENGINEER.  
BEFORE WORK CAN BE STARTED, THE CONTRACTOR MUST OBTAIN A PERMIT TO EXCAVATE IN COUNTY STREETS FROM THE L.A. COUNTY ROAD DEPT., DISTRICT OFFICE AND MAKE A DEPOSIT WITH THE COUNTY ENGINEER, ROOM 224 PAN AMERICAN BUILDING, 225 S.O. BROADWAY SUFFICIENT TO COVER THE COST OF CONSTRUCTION INSPECTION AND RECORD PLANS.  
APPROVAL OF THIS PLAN BY THE COUNTY OF LOS ANGELES DOES NOT CONSTITUTE A REPRESENTATION AS TO THE ACCURACY OF THE LOCATION OF OR THE EXISTENCE OR NON-EXISTENCE OF ANY UNDERGROUND UTILITY PIPE, OR STRUCTURE WITHIN THE LIMITS OF THIS PROJECT. THIS NOTE APPLIES TO ALL PAGES.  
IF WORK IS TO BE DONE IN A STATE HIGHWAY, A PERMIT MUST BE OBTAINED FROM THE STATE OF CALIFORNIA, DIVISION OF HIGHWAYS, 120 SOUTH SPRING STREET.

COUNTY OF LOS ANGELES, CALIFORNIA  
ACCEPTED, JOHN A. LAMBE, COUNTY ENGINEER  
APPROVED, C.R. DOWD, CHIEF ENGINEER  
CO. SEAL NO. \_\_\_\_\_  
BY \_\_\_\_\_ SANITATION ENGINEER  
BY \_\_\_\_\_ OFFICE ENGINEER  
CHECKED BY \_\_\_\_\_  
OFFICE OF COUNTY ENGINEER, REG. C. E. NO. \_\_\_\_\_  
SUBMITTED \_\_\_\_\_ SAN DIMAS REGIONAL ENGINEER



P.C. 5448 PAGE 2

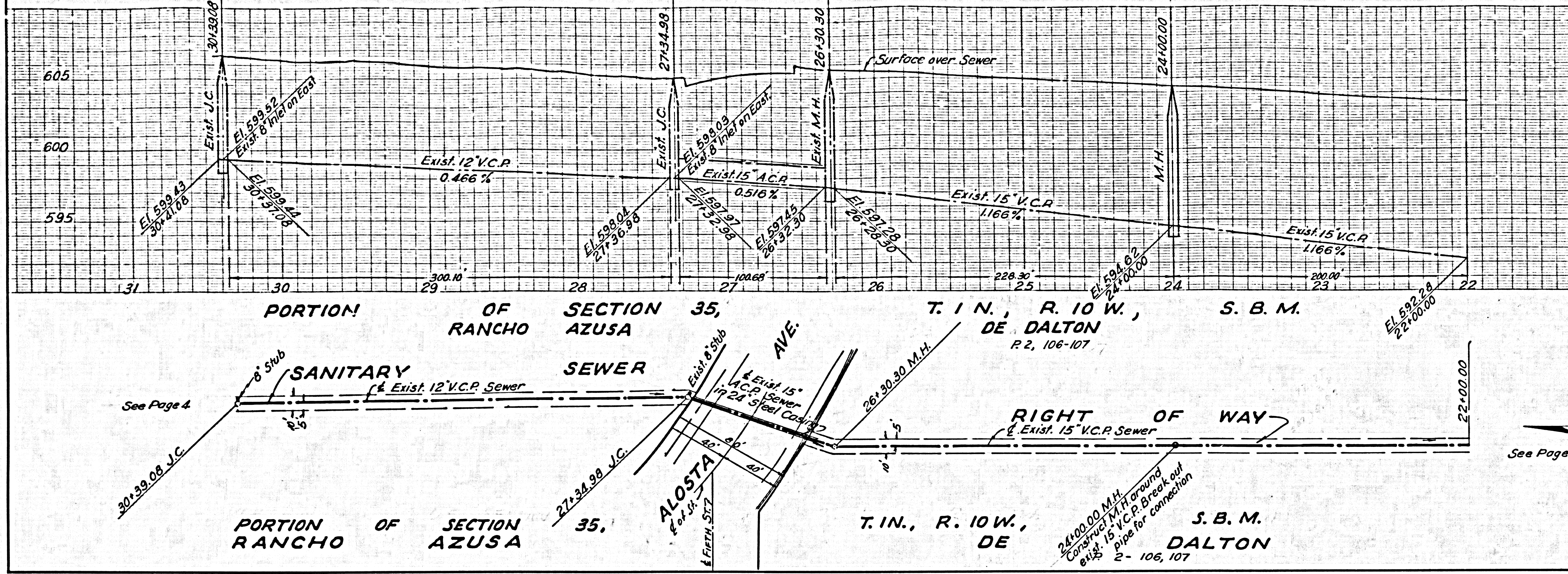
PORTION OF SECTION 35, T. 1 N., R. 10 W., S.B.M.  
RANCHO AZUSA DE DALTON  
P. 2 - 106-107

SANITARY SEWER RIGHT OF WAY  
& Exist. 15" V.C.P. Sewer  
4' of 10' Easement to the County of Los Angeles for Sanitary Sewer Purposes

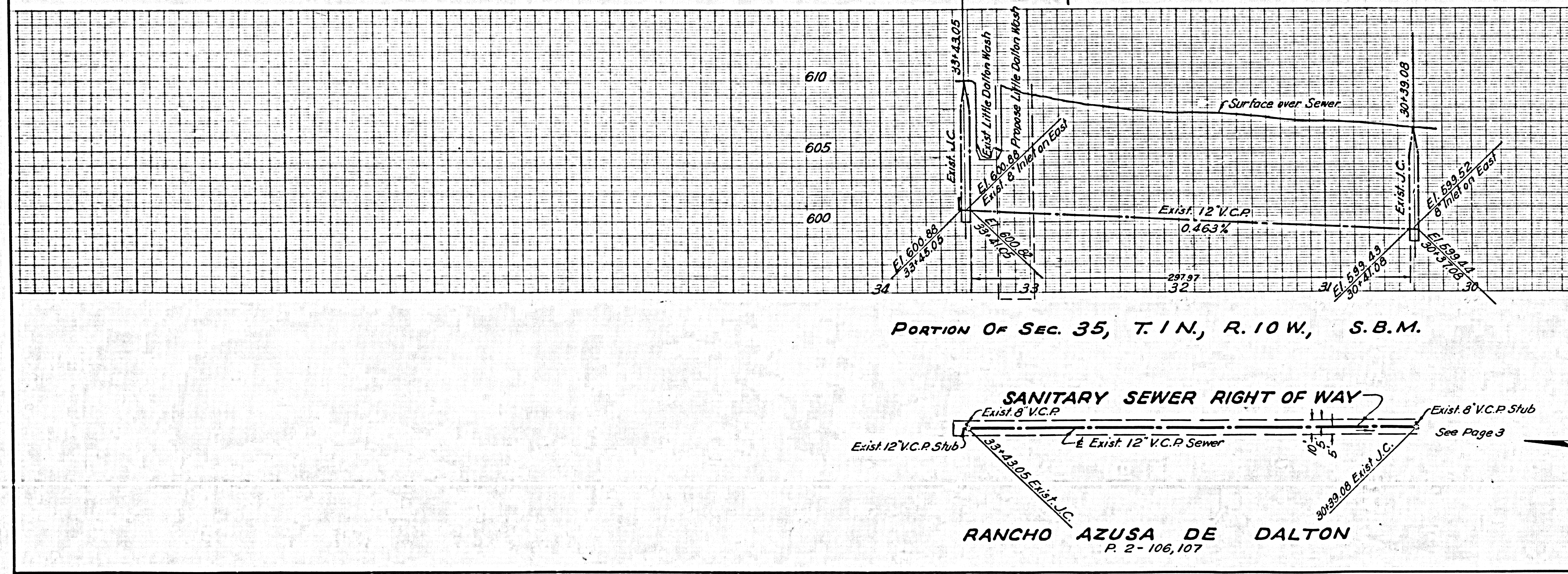
PORTION OF SECTION 35, T. 1 N., R. 10 W., S.B.M.  
RANCHO AZUSA DE DALTON  
P. 2 - 106, 107

TRACT 64  
City of Azusa  
N° 20495  
M.B. 556, 39-44

TRACT 65  
City of Azusa  
N° 20495  
M.B. 556, 39-44



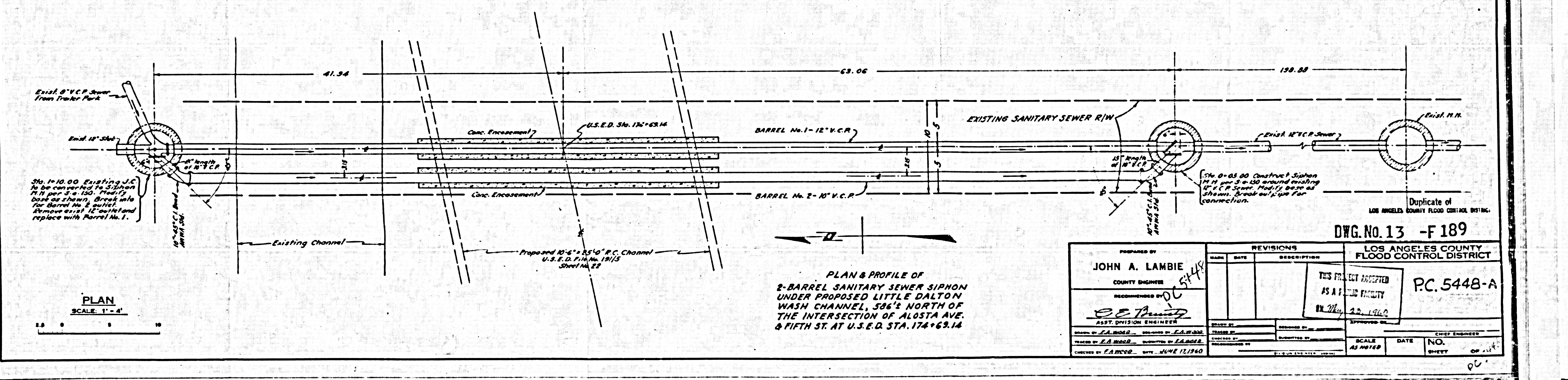
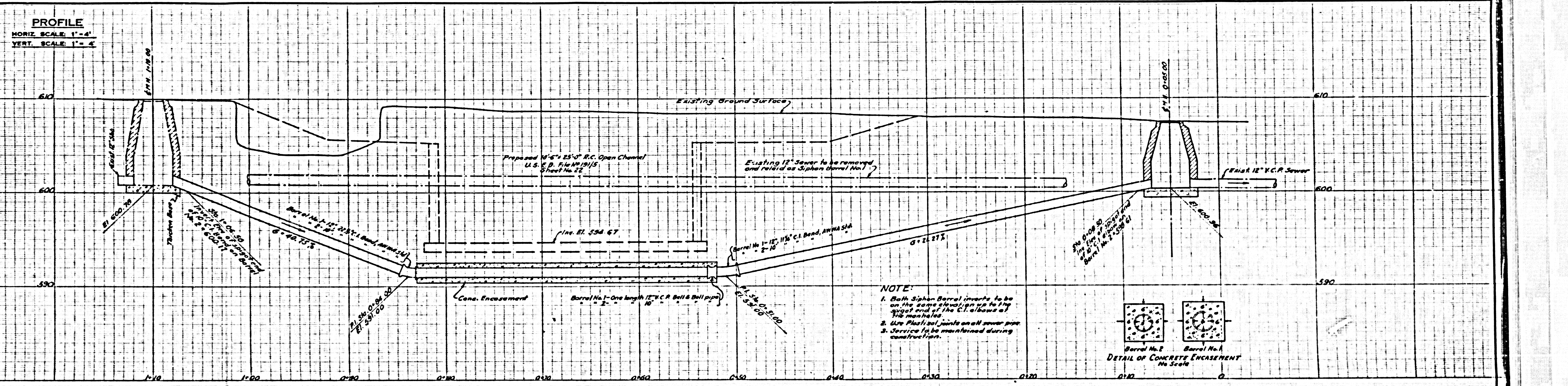
See Page 2

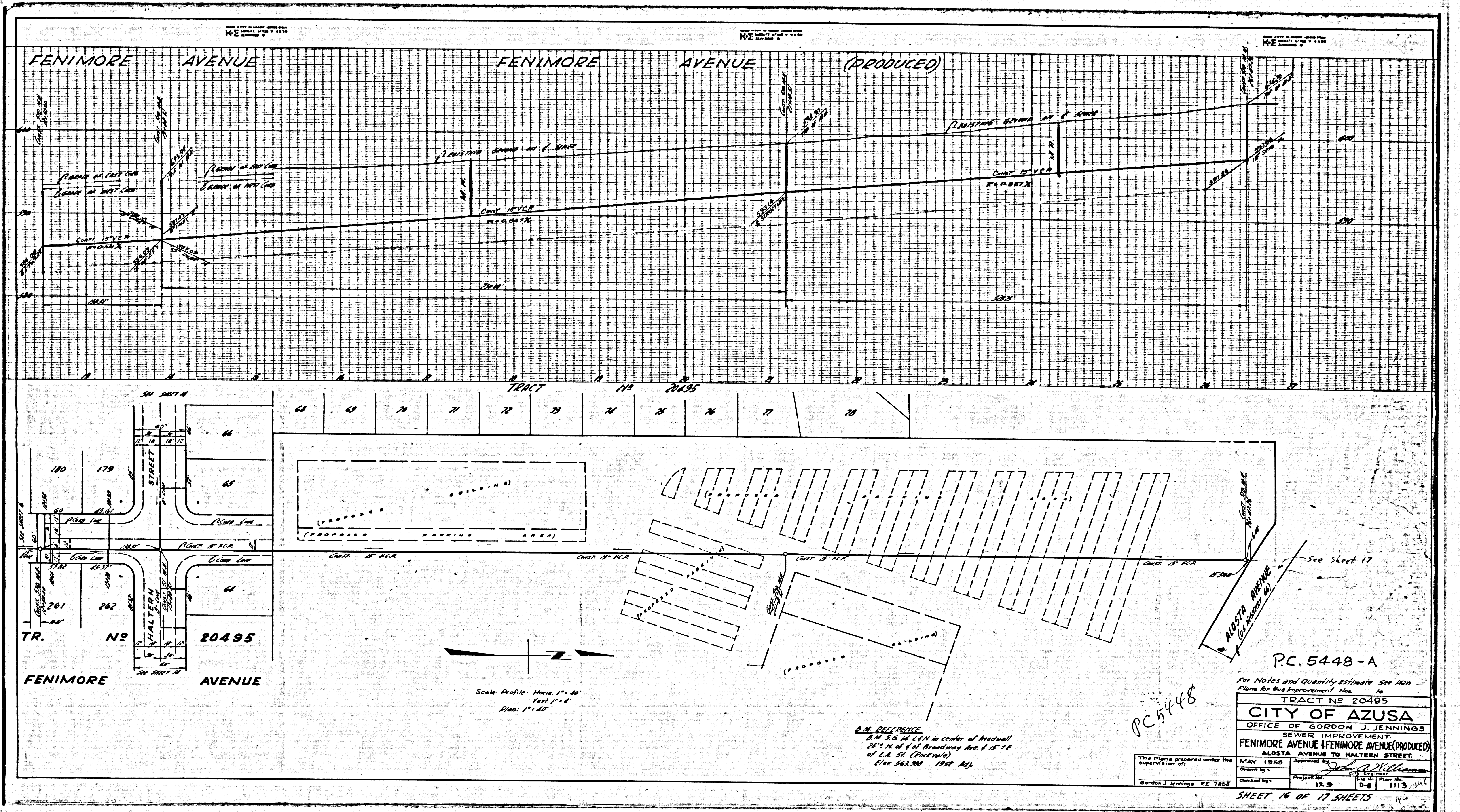


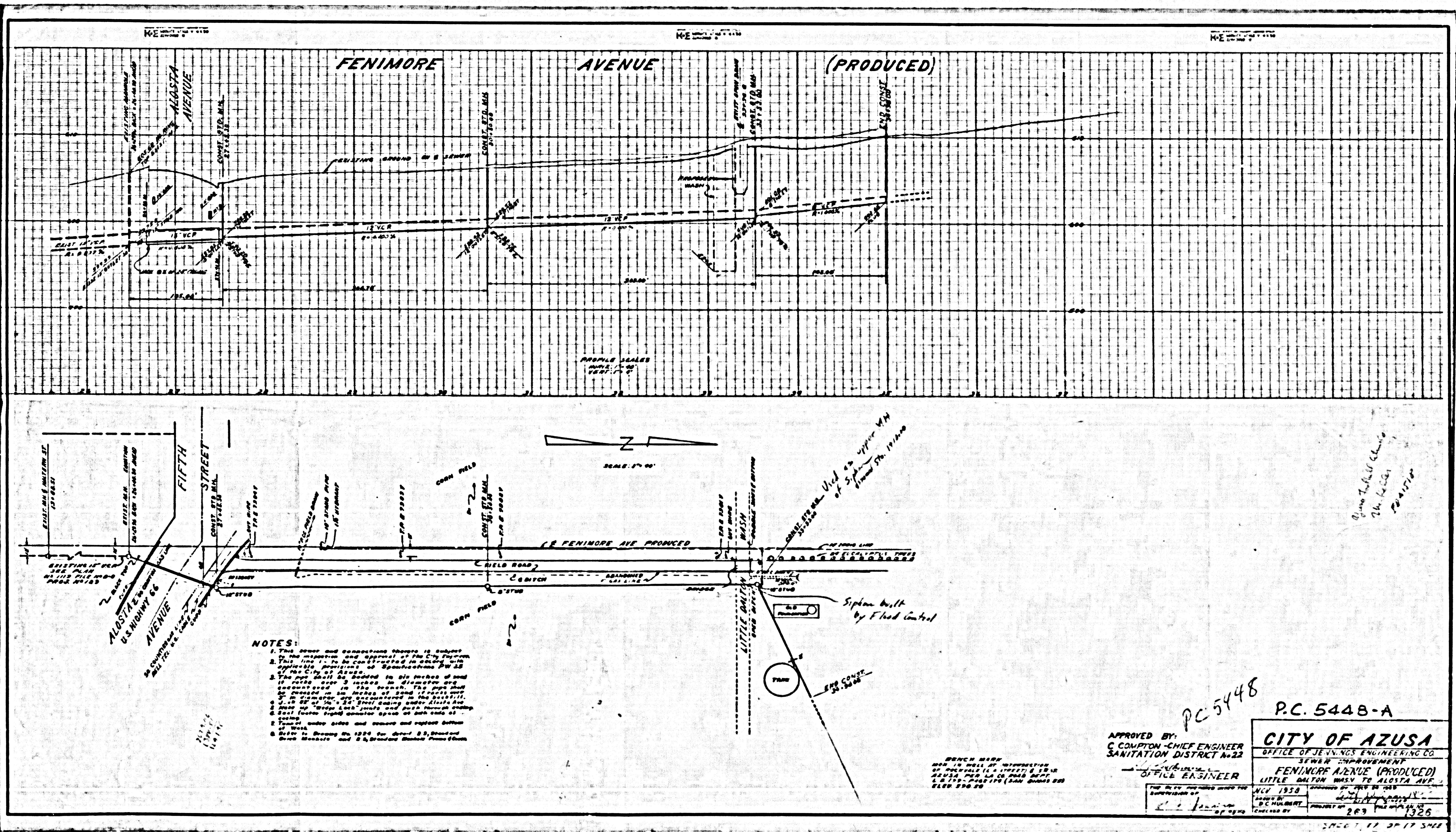
See Page 3



Legal?







- NOTES:**
1. This sewer and collection system is subject to the approval and approval of the City Engineer.
  2. The sewer line is to be installed in accordance with the City of Azusa Sanitation District No. 22.
  3. The sewer line is to be installed in accordance with the City of Azusa Sanitation District No. 22.
  4. The sewer line is to be installed in accordance with the City of Azusa Sanitation District No. 22.
  5. The sewer line is to be installed in accordance with the City of Azusa Sanitation District No. 22.
  6. The sewer line is to be installed in accordance with the City of Azusa Sanitation District No. 22.
  7. The sewer line is to be installed in accordance with the City of Azusa Sanitation District No. 22.
  8. The sewer line is to be installed in accordance with the City of Azusa Sanitation District No. 22.
  9. The sewer line is to be installed in accordance with the City of Azusa Sanitation District No. 22.
  10. The sewer line is to be installed in accordance with the City of Azusa Sanitation District No. 22.

PC 5448  
 P.C. 5448-A  
 APPROVED BY:  
 C. COMPTON - CHIEF ENGINEER  
 SANITATION DISTRICT NO. 22  
 OFFICE OF JENNINGS ENGINEERING CO.  
 SEWER IMPROVEMENT  
 FENIMORE AVENUE (PRODUCED)  
 CITY OF AZUSA  
 LITTLE DALTON WASH TO ALOSTA AVE.  
 JULY 1936  
 SHEET NO. 283  
 JULY 1936

Some details shown  
 in the  
 plan

BRICK MANSION  
 100 N. 10th St.  
 Azusa, Cal.  
 JULY 1936