

NO CHARGE FOR CONNECTIONS
A. G. Albertson 3/4/60

ALTADENA BLDG. DIST. NO. 3

PROFILE ALIGNMENT AND GRADE OF P.C. 5453
 SANITARY SEWERS PAGE 1

TO BE CONSTRUCTED IN
 EL NIDO DRIVE

PRIVATE CONTRACT NO. 5453

W.S. 88
 1 SHEET : 2 PAGES

28,852

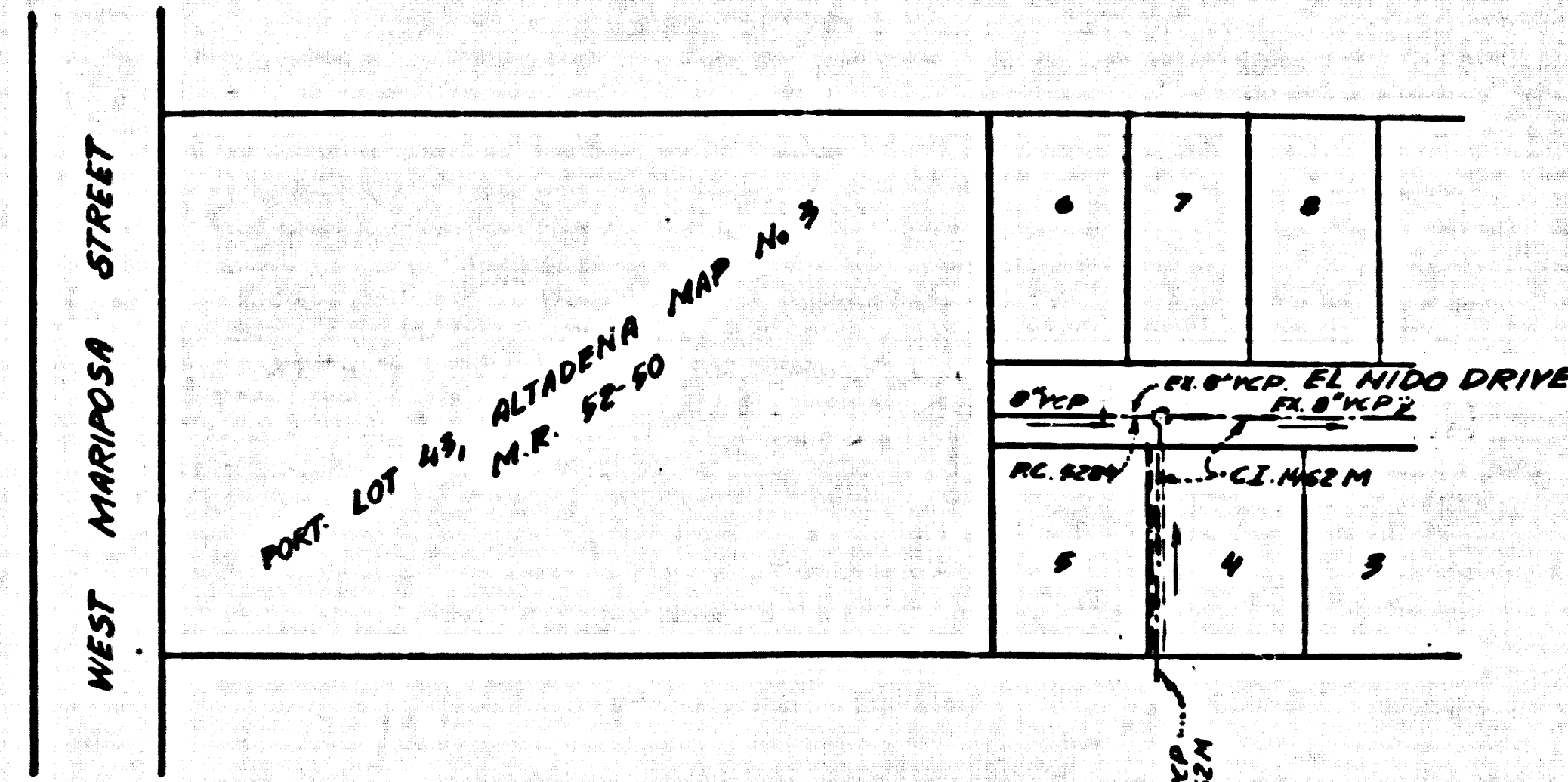
SCALE: VERT. 1"=4'
 HORIZ. 1"=40'
 FEBRUARY, 1960
 PREPARED IN THE OFFICES OF
 BARNETT, HOPEN, SMITH & SALIT

By: *Harold A. Barnett*
 REG. C. E. NO. 1216

FOR LEGEND SEE PLAN NO. SA-64

NOTE:
 GRADES TO WHICH THIS IMPROVEMENT IS TO BE CONSTRUCTED ARE SHOWN ON PLANS AND PROFILES. GRADE POINTS FOR TOP OF CURBS, CENTER LINE OF STREETS, OR CENTER LINE OF ALLEYS ARE SHOWN BY CIRCLES ON PROFILES. AT ALL POINTS BETWEEN DESIGNATED POINTS THE GRADE SHALL BE ESTABLISHED SO AS TO CONFORM TO A STRAIGHT LINE DRAWN BETWEEN SAID DESIGNATED POINTS.
 ELEVATIONS ARE IN FEET ABOVE U.S.C. & G.S. SEA LEVEL DATUM OF 1929.
 THIS DRAWING AND THE DATA HEREON ARE HEREBY MADE A PART OF THE SPECIFICATIONS.
 WORK SHALL BE CONSTRUCTED ACCORDING TO SPECIFICATIONS ON FILE IN THE OFFICE OF THE COUNTY ENGINEER AND SHALL BE PROSECUTED ONLY IN THE PRESENCE OF THE COUNTY ENGINEER.
 BEFORE WORK CAN BE STARTED, THE CONTRACTOR MUST OBTAIN A PERMIT TO REPAVEMENT IN COUNTY STREETS FROM THE L. & COUNTY ROAD DEPT., DISTRICT OFFICE NO. 2 AND PAY FOR THE COUNTY ENGINEER ROOM 224 PAN AMERICAN BUILDING, 283 SO. BROADWAY SUFFICIENT TO COVER THE COST OF CONSTRUCTION INSPECTION AND RECORD PLANS.
 APPROVAL OF THIS PLAN BY THE COUNTY OF LOS ANGELES DOES NOT CONSTITUTE A REPRESENTATION AS TO THE ACCURACY OF THE LOCATION OR OF THE EXISTENCE OR NON-EXISTENCE OF ANY UNDERGROUND UTILITY PIPE, OR STRUCTURE WITHIN THE LIMITS OF THIS PROJECT. THIS NOTE APPLIES TO ALL PAGES.
 IF WORK IS TO BE DONE IN A STATE HIGHWAY, A PERMIT MUST BE OBTAINED FROM THE STATE OF CALIFORNIA, DIVISION OF HIGHWAYS, 128 SOUTH SPRING STREET.

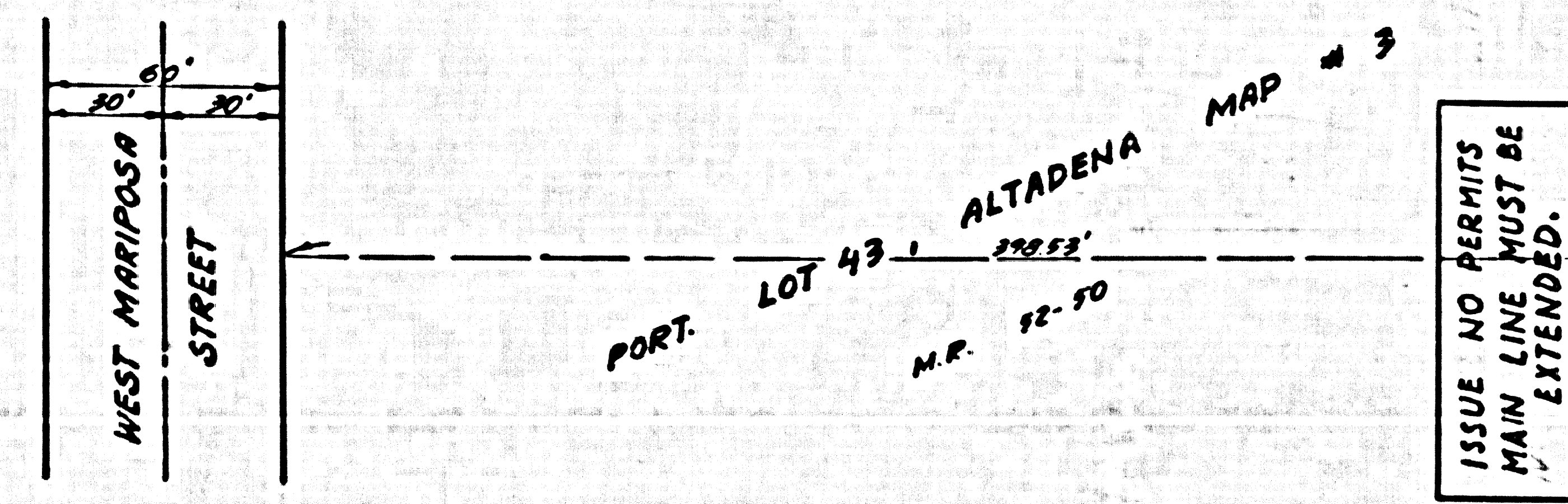
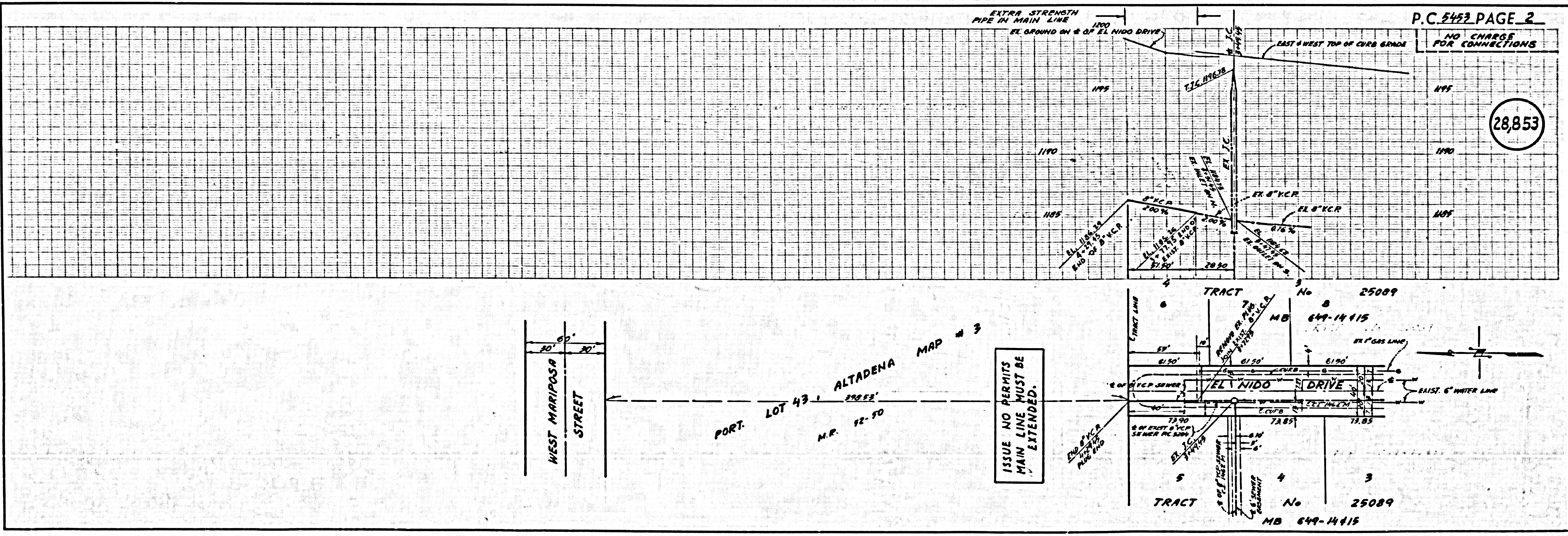
- NOTES:
1. PROVIDE STAKES ON THE PROPERTY LINE OR PROPERTY LINES PRODUCED AT RIGHT ANGLES TO THE SEWER LINE AT THE CENTER LINE OF EACH MANHOLE.
 2. NO REPRESENTATIVE OF THE COUNTY ENGINEER WILL SURVEY OR LAY OUT ANY PORTION OF THE WORK.
 3. THE OWNER OR HIS AUTHORIZED REPRESENTATIVE SHALL FURNISH THE COUNTY ENGINEER WITH GRADE SHEETS AND STATIONING FOR ALL HOUSE LATERALS AND Y BRANCHES AND SHALL PROVIDE STAKES FOR THEM AT THEIR PROPER LOCATIONS WITH STATIONING PLAINLY MARKED. ANY CHANGE IN LOCATION SHALL BE REQUESTED IN WRITING BY THE OWNER OR HIS REPRESENTATIVE.
 4. THE PRIVATE ENGINEER SHALL FURNISH THE HOUSE EXTERIOR DEPTH AT THE PROPERTY LINE BELOW THE TOP OF CURB ELEVATION FOR EACH HOUSE LATERAL ON THE GRADE SHEET.
 5. NO REVISIONS SHALL BE MADE IN THESE PLANS WITHOUT THE APPROVAL OF THE COUNTY ENGINEER.
 6. USE STANDARD MANHOLE FRAMES AND COVERS, S-117-280897-AS-NOTED.
 7. USE #47740 - STRENGTH PIPE EXCEPT AS NOTED.
 8. USE CEMENT MORTAR OR "WEDGE-LOCK" OR "SPEED-SEAL" FOR ALL V.C.P. JOINTS PER SPEC'S, SECS. 34 & 48.
 9. RESURFACE ALL TRENCH WITHIN PAVED AREA TO MEET L.A. COUNTY ROAD DEPT. OR CALIF. STATE HIGHWAY REQUIREMENTS IN ACCORDANCE WITH PERMITS.
 10. ENCASE FOUR FEET OF SEWER AT POINTS OF INTERFERENCE WITH POLES, CASE III, S-172.
 11. HOUSE LATERALS TO BE CONSTRUCTED WITH 4" DIAMETER AT PROPERTY LINE - FEET BELOW CURB GRADE EXCEPT AS NOTED.
 12. ALL STRUCTURES SHALL BE BRICK SEWER STRUCTURES, S-104, 886497-AS-NOTED.
 13. FOR ALLOWABLE LEAKAGE TEST USE FORMULA NO. 1, SPEC'S, SEC. 54.
 14. MANHOLE TOPS IN UNIMPROVED AREAS TO BE SIX INCHES ABOVE FINISHED GRADE.
 15. THE CONTRACTOR SHALL NOTIFY THE CONSTRUCTION & STORM DRAIN DIVISION BY TELEPHONE, MADISON 3-7471, EXT. 88, AT LEAST TWENTY-FOUR HOURS BEFORE STARTING ANY WORK UNDER THIS CONTRACT.
 16. STANDARD SPECIFICATIONS DATED JAN. 1, 1960 SHALL BE USED IN THE CONSTRUCTION OF THIS PROJECT.



INDEX MAP
 SCALE 1"=100'
 PORTION OF LOT 43, ALTADENA MAP #3.
 P.C. 5453

B.M. SY 4338 SY BM's PG 2702 ELEV. 1197.564
 LA CAÑADA QUAD.
 1/4 BRAD NEAR W. EDGE CONC. WALK TO USE AT
 S.E. COR. CASITAS AVE & HARRIET ST. 2 33' & 44'S
 OF E INTERSECTION.

COUNTY OF LOS ANGELES, CALIFORNIA
 APPROVED, JOHN A. LAMBIE, COUNTY ENGINEER APPROVED, C.R. CONYIN, CHIEF ENGINEER
 BY: *[Signature]* BY: *[Signature]*
 SANITARY ENGINEER OFFICE ENGINEER
 CHECKED BY: *[Signature]* 3-7-60
 OFFICE OF COUNTY ENGINEER, REG. C. E. NO. 2406
 SUBMITTED: *[Signature]*
 SAN GABRIEL VALLEY REGIONAL ENGINEER



ISSUE NO PERMITS
 MAIN LINE MUST BE
 EXTENDED.

