

BENCH MARK
 BY 4095 BLK. THIRSE (1927 ADJ.) L.A. COUNTY ROAD DEPT. MEASUREMENT IN FINAL ALIGNMENT 8.25' OF LUTHERLIE AVE. AND N. 1/2' W. OF TELE. POLE AT N. 1/2' W. 1/2' S. OF S. OF IMPERIAL HIGHWAY IN CASING WITH COVER LA MIRADA BLVD.

Note: Lots 4 to 6, 13 to 19, 30 to 39, 50 to 59 and 70 are served by P.C. 5457

NORWALK BLDG. DIST. NO. 4.2

PROFILE ALIGNMENT AND GRADE OF **P.C. 5455**
SANITARY SEWERS PAGE 1
 TO BE CONSTRUCTED IN **J.N. 0352.97**

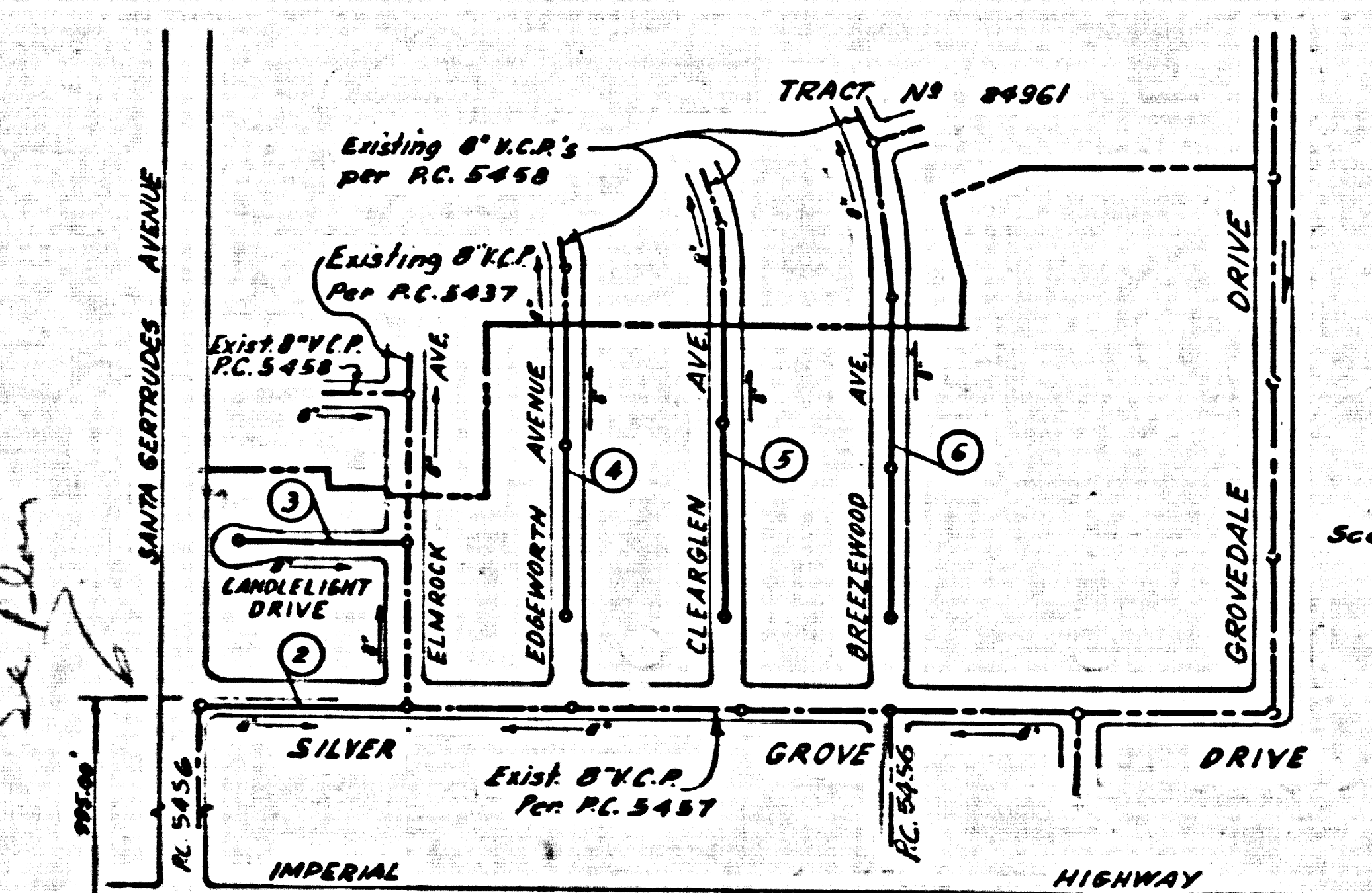
TRACT NO 24962
PRIVATE CONTRACT NO. 5455

W.S. 34
 3 SHEETS; 6 PAGES
 SCALE: VERT. 1"=4' HORIZ. 1"=40'
 PREPARED IN THE OFFICES OF

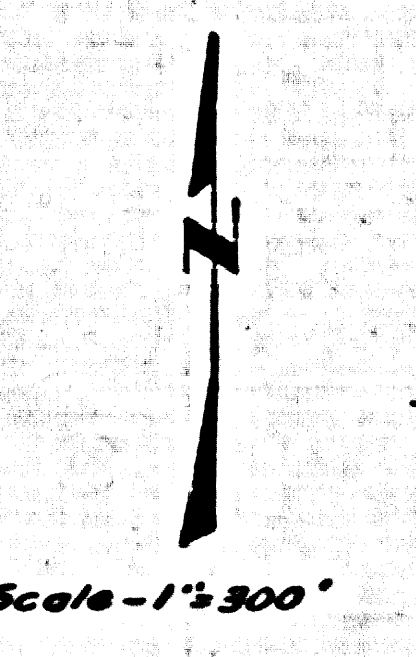
McINTIRE & QUIROS INC.
 By: *Oliver McIntire* 6/23/60
 REG. C. E. NO. 9548

29,675

FOR LEGEND SEE PLAN NO. S-444



INDEX MAP
 TRACT NO 24962
 P.C. 5455



Scale - 1"=300'

REVISION	
1. Moved MH 3+32.87 To MH 3+07.87, Page 2, Sept 7, 1960	
APPROVED BY <i>Robert L. Estlin</i> 9-7-60	
Los Cerritos Regional Engineer, Reg. C.E. No. 3871	

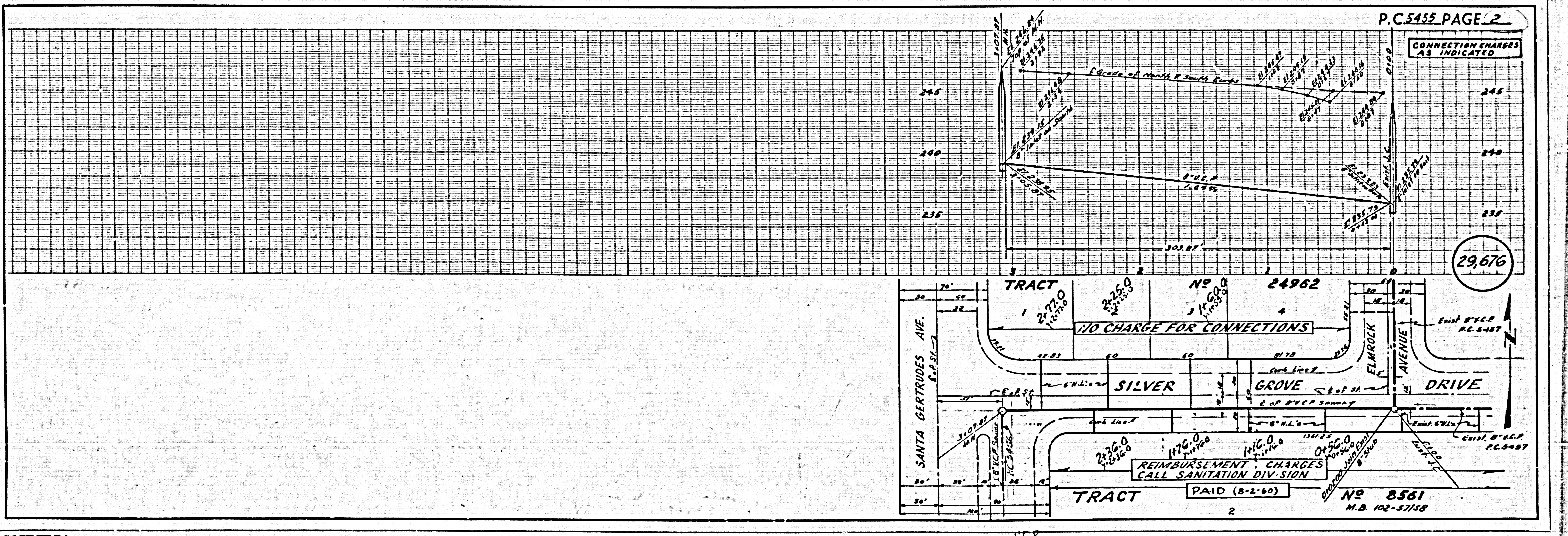
- NOTES:**
- PROVIDE STAKES ON THE PROPERTY LINE OR PROPERTY LINES PRODUCED AT RIGHT ANGLES TO THE SEWER LINE AT THE CENTER LINE OF EACH MANHOLE.
 - NO REPRESENTATIVE OF THE COUNTY ENGINEER WILL SURVEY OR LAY OUT ANY PORTION OF THE WORK.
 - THE OWNER OR HIS AUTHORIZED REPRESENTATIVE SHALL FURNISH THE COUNTY ENGINEER WITH GRADE SHEETS AND STATIONING FOR ALL HOUSE LATERALS AND Y BRANCHES AND SHALL PROVIDE STAKES FOR THEM AT THEIR PROPER LOCATIONS WITH STATIONING PLAINLY MARKED. ANY CHANGE IN LOCATION SHALL BE REQUESTED IN WRITING BY THE OWNER OR HIS REPRESENTATIVE.
 - THE PRIVATE ENGINEER SHALL FURNISH THE HOUSE LATERAL DEPTH AT THE PROPERTY LINE BELOW THE TOP OF CURB ELEVATION FOR EACH HOUSE LATERAL ON THE GRADE SHEET.
 - NO REVISIONS SHALL BE MADE IN THESE PLANS WITHOUT THE APPROVAL OF THE COUNTY ENGINEER.
 - USE STANDARD MANHOLE FRAMES AND COVERS, S-117.
 - USE STANDARD STRENGTH PIPE.
 - USE CEMENT MORTAR OR "WEDG-LOC" OR "SPEED-SEAL" FOR ALL V.C.P. JOINTS PER SPEC. SECS. 16 & 46.
 - RESURFACE ALL TRENCH WITHIN PAVED AREA TO MEET L.A. COUNTY ROAD DEPT. OR CALIF. STATE HIGHWAY REQUIREMENTS IN ACCORDANCE WITH PERMITS.
 - ENCASE FOUR FEET OF SEWER AT POINTS OF INTERFERENCE WITH POLES, OR WHEN OTHER ALLEYS THAN FOUR FEET PER S-117 CASE IS NOTED.
 - HOUSE LATERALS TO BE CONSTRUCTED WITH INVERTS AT PROPERTY LINE 8 FEET BELOW CURB GRADE EXCEPT AS NOTED.
 - ALL STRUCTURES SHALL BE BRICK SEWER STRUCTURES, S-104.
 - FOR ALLOWABLE LEAKAGE TEST USE FORMULA NO. 1 SPEC. SEC. 54.
 - MANHOLE TOPS IN UNIMPROVED RIGHTS-OF-WAY TO BE SIX INCHES ABOVE FINISHED GRADE.
 - THE CONTRACTOR SHALL NOTIFY THE CONSTRUCTION DIVISION BY TELEPHONE, MADISON 9-4747, EXT. 2841 AT LEAST TWENTY-FOUR HOURS BEFORE STARTING ANY WORK UNDER THIS CONTRACT.
 - THE CONTRACTOR SHALL SATISFY HIMSELF OF ALL STRUCTURES AND SHALL BE RESPONSIBLE FOR THEIR LOCATION AND MAINTENANCE.
 - IF ANY CONSTRUCTION SHALL BE PERMITTED IN FILLED AREAS UNLESS ACCEPTABLE CERTIFICATION IS SUBMITTED TO THE CONSTRUCTION DIVISION OF THE COUNTY ENGINEER'S DEPT. THAT CONSTRUCTION IS GREATER THAN 80%.
 - IF CONSTRUCTION IS GREATER THAN 80%, CRADLING OR SPECIAL M.R. BASES ARE NOT REQUIRED, HOWEVER JOINT COMPOUND MUST BE SUBSTITUTED FOR CEMENT MORTAR FOR ALL JOINTS IN FILLED AREAS.
 - IF CONSTRUCTION IS LESS THAN 80%, THE SEWER MUST BE CRADLED AS SHOWN ON PLANS (PER S-117-102).
 - STANDARD SPECIFICATIONS DATED JAN. 1, 1960, APPLY IN THE CONSTRUCTION OF THIS PROJECT.

CONNECTION CHARGES AS INDICATED
S. Nickland 11-14-60

NOTE:
 GRADES TO WHICH THIS IMPROVEMENT IS TO BE CONSTRUCTED ARE SHOWN ON PLANS AND PROFILES. GRADE POINTS FOR TOP OF CURB, CENTER LINE OF STREETS, OR CENTER LINE OF ALLEYS ARE SHOWN BY CIRCLES ON PROFILES. AT ALL POINTS BETWEEN DESIGNATED POINTS THE GRADE SHALL BE ESTABLISHED SO AS TO CONFORM TO A STRAIGHT LINE DRAWN BETWEEN SAID DESIGNATED POINTS.
 ELEVATIONS ARE IN FEET ABOVE U.S.C. & G.S. SEA LEVEL DATUM OF 1929.
 THIS DRAWING AND THE DATA HEREON ARE HEREBY MADE A PART OF THE SPECIFICATIONS.
 WORK SHALL BE CONSTRUCTED ACCORDING TO SPECIFICATIONS ON FILE IN THE OFFICE OF THE COUNTY ENGINEER AND SHALL BE PROSECUTED ONLY IN THE PRESENCE OF THE COUNTY ENGINEER.
 BEFORE WORK CAN BE STARTED, THE CONTRACTOR MUST OBTAIN A PERMIT TO RECAPITATE IN COUNTY STREETS FROM THE L.A. COUNTY ROAD DEPT., DISTRICT OFFICE NO. 1 AND PAY A FEE WITH THE COUNTY ENGINEER ROOM 324 SAN ANTONIO BUILDING, 233 SO. BROADWAY SEVENTH TO COVER THE COST OF CONSTRUCTION INSPECTION AND RECORD PLANS.
 APPROVAL OF THIS PLAN BY THE COUNTY OF LOS ANGELES DOES NOT CONSTITUTE A REPRESENTATION AS TO THE ACCURACY OF THE LOCATION OR OF THE EXISTENCE OR NON-EXISTENCE OF ANY UNDERGROUND UTILITY TYPED OR STRUCTURE WITHIN THE LIMITS OF THIS PROJECT. THIS NOTE APPLIES TO ALL PAGES.
 IF WORK IS TO BE DONE IN A STATE HIGHWAY, A PERMIT MUST BE OBTAINED FROM THE STATE OF CALIFORNIA, DIVISION OF HIGHWAYS, 120 NORTH BRIDGE STREET.

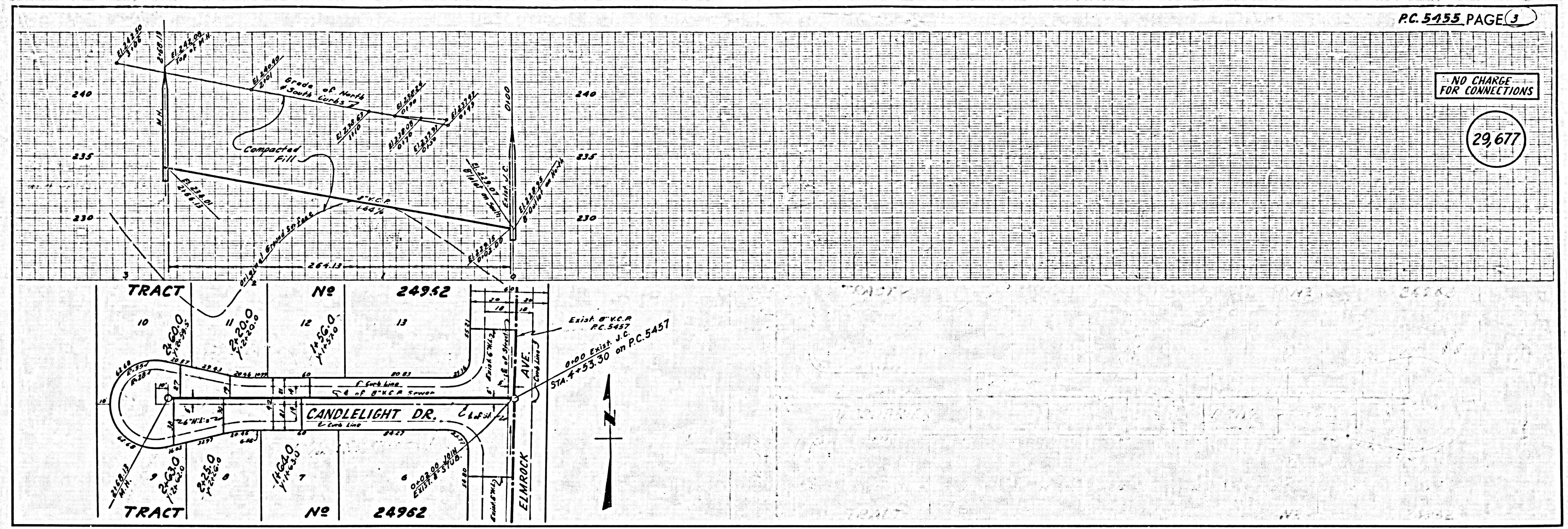
COUNTY OF LOS ANGELES, CALIFORNIA
 APPROVED, JOHN A. LAMBIE, COUNTY ENGINEER APPROVED, C.R. COMPTON, CHIEF ENGINEER
 BY: *E.E. Brand* 417'S SANITATION ENGINEER BY: *J. Keith* CHIEF ENGINEER
 CHECKED BY: *J.K. Oiler* 7-22-60
 OFFICE OF COUNTY ENGINEER, REG. C. E. NO. 3454

SUBMITTED BY: *John L. Estlin* 7-15-60
 LOS CERRITOS REGIONAL ENGINEER, REG. C.E. NO. 3871



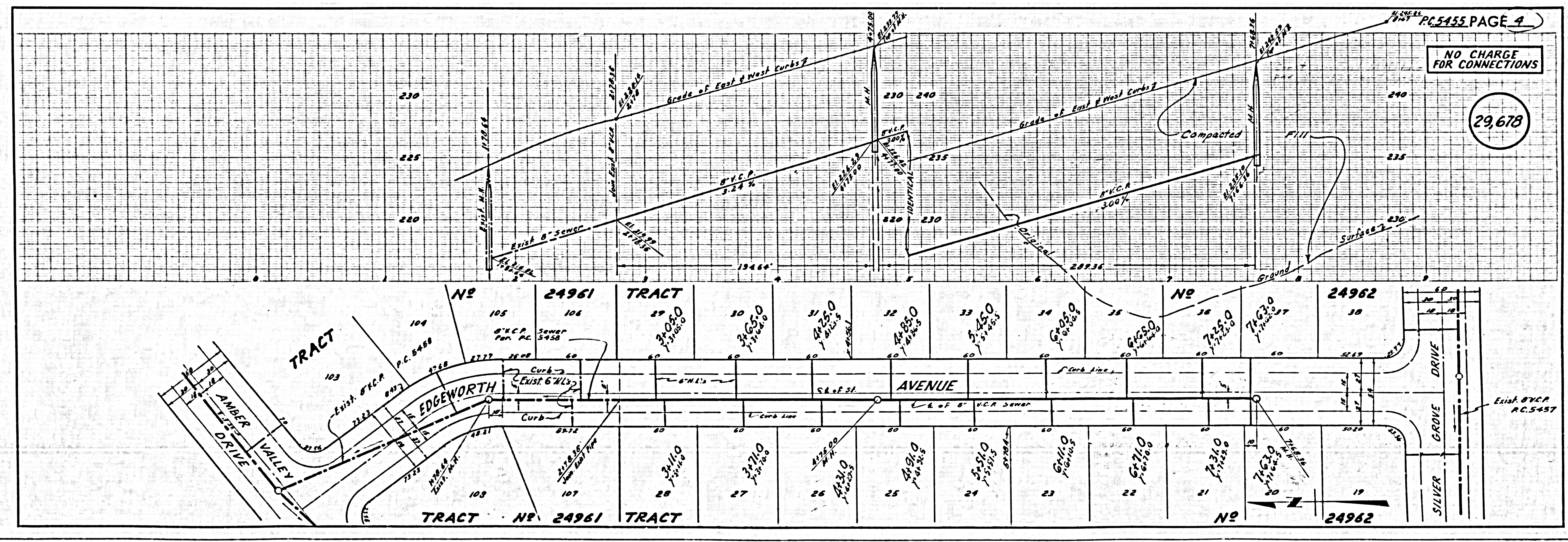
NO CHARGE FOR CONNECTIONS

29,677



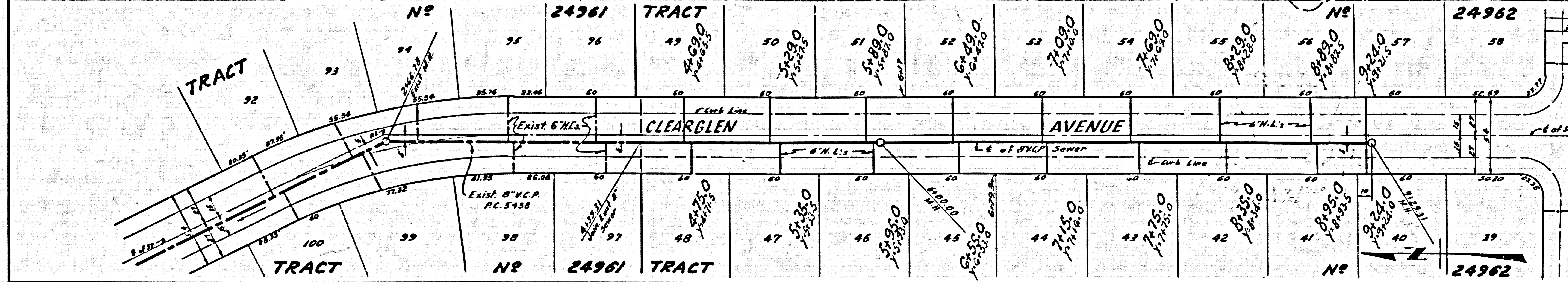
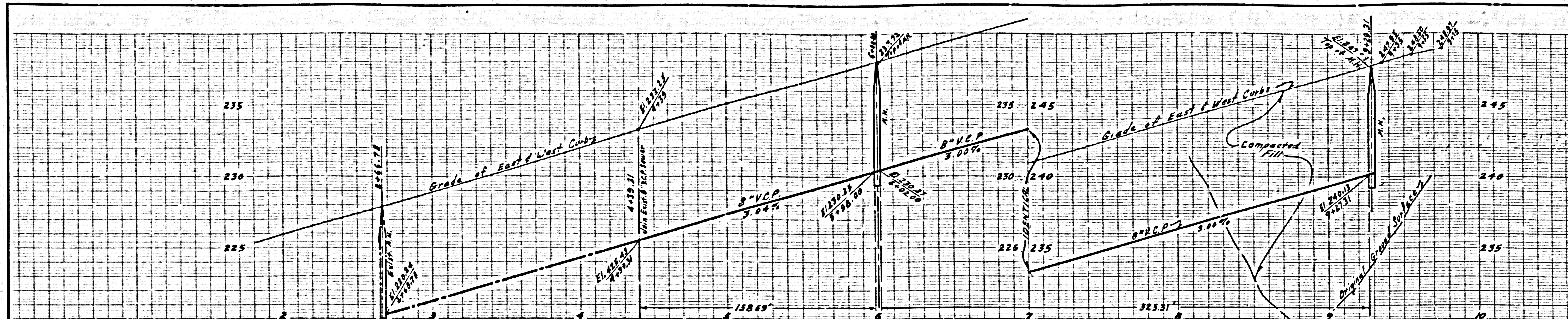
NO CHARGE FOR CONNECTIONS

29,678



NO CHARGE FOR CONNECTIONS

29,679



NO CHARGE FOR CONNECTIONS

29,680

