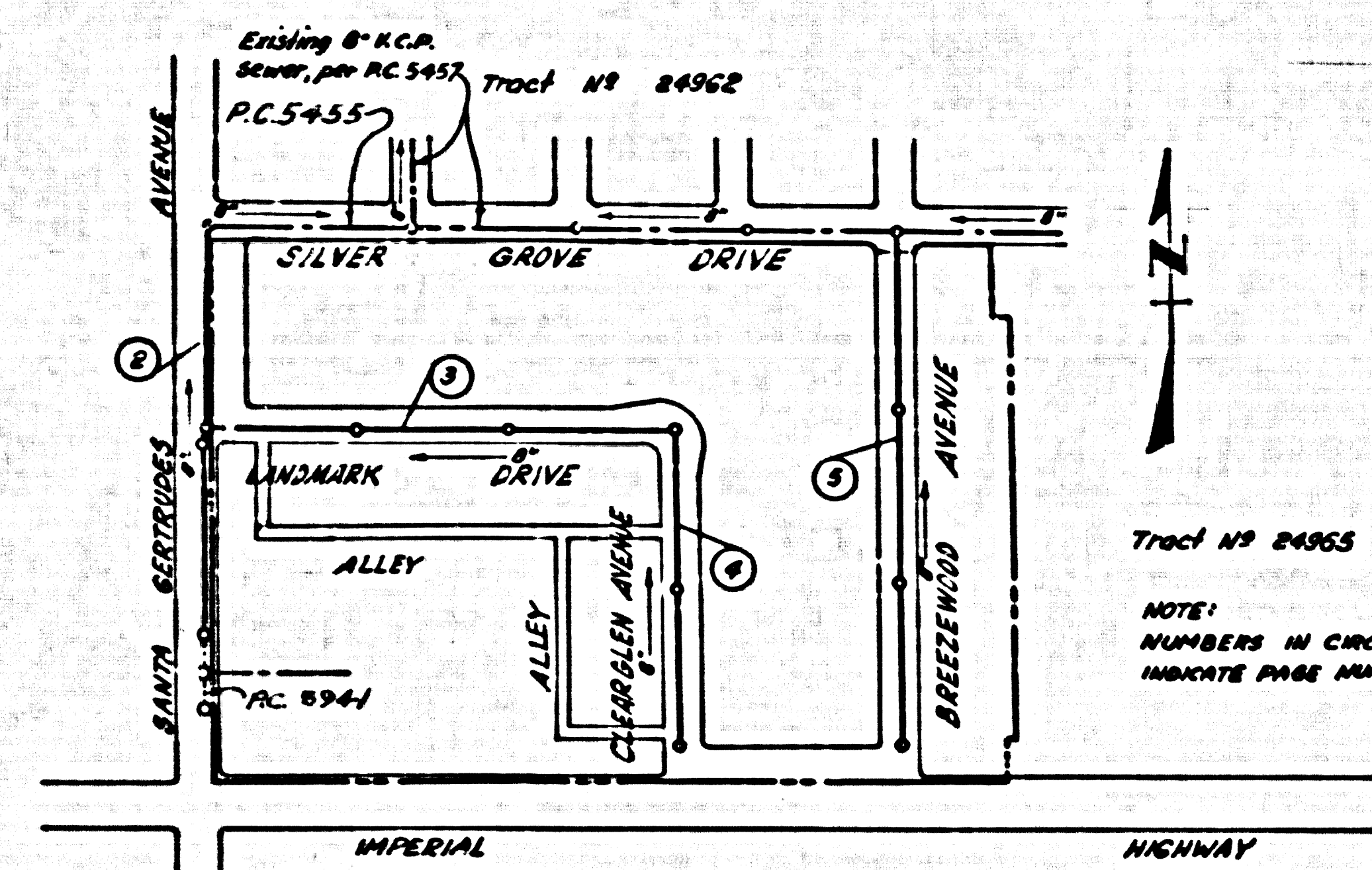


**BENCH MARK**  
 BY 4052 E.L. 181856 (1958 ADJ.) L.A. COUNTY ROAD DEPT. PROVISIONS IN 1940, ALIGNMENT 57.4 OF E. OF LANDWALK AND 11.8 IN. OF TIE. POLE 17.5 IN. S. 1/4 - 1836'S SOUTH 1/4 E. OF IMPERIAL HIGHWAY IN CHANGING WITH CORNER LA MISADA QUAD.



**INDEX MAP**  
 TRACT No. 24959  
 P.C. 5456  
 Scale = 1"=300'

**NOTE:**  
 LOTS 1, 2, 27 THROUGH 39 SERVED BY P.C. 5457  
 LOTS 40 THROUGH 43 SERVED BY P.C. 5455

**NOTE:**  
 NUMBERS IN CIRCLES INDICATE PAGE NUMBERS

REVISION	
1	Page 2, Changed Location of 8" V.C.P. and Main Line Stub 8'-0" to 3'-8 1/2"
2	7/24/64, Changed location of 8" V.C.P. Changed to 0'-25.00
APPROVED BY: <i>John L. Estlin</i> 9-8-60 Los Cerritos Regional Engineer, Reg. C.E. No. 3871	

**NORWALK BLDG. DIST. NO. 4.2**

- NOTES:**
1. PROFILE STAKES ON THE PROPERTY LINE OR PROPERTY LINES PRODUCED AT RIGHT ANGLES TO THE SEWER LINE AT THE CENTER LINE OF EACH MANHOLE.
  2. NO REPRESENTATIVE OF THE COUNTY ENGINEER WILL SURVEY OR LAY OUT ANY PORTION OF THE WORK.
  3. THE OWNER OR HIS AUTHORIZED REPRESENTATIVE SHALL FURNISH THE COUNTY ENGINEER WITH GRADE SHEETS AND STATIONING FOR ALL HOUSE LATERALS AND Y BRANCHES AND SHALL PROVIDE STAKES FOR THEM AT THEIR PROPER LOCATIONS WITH STATIONING PLAINLY MARKED. ANY CHANGE IN LOCATION SHALL BE REQUESTED IN WRITING BY THE OWNER OR HIS REPRESENTATIVE.
  4. THE PRIVATE ENGINEER SHALL FURNISH THE HOUSE LATERAL DEPTH AT THE PROPERTY LINE BELOW THE TOP OF CURB ELEVATION FOR EACH HOUSE LATERAL ON THE GRADE SHEET.
  5. NO REVISIONS SHALL BE MADE IN THESE PLANS WITHOUT THE APPROVAL OF THE COUNTY ENGINEER.
  6. USE STANDARD MANHOLE FRAMES AND COVERS, S-10-87.
  7. USE STANDARD STRENGTH PIPE EXCEPT AS NOTED.
  8. USE CEMENT MORTAR OR "WEDGE-LOCK" OR "SPEED-SEAL" FOR ALL V.C.P. JOINTS PER SPECS. SECS. 36 & 40.
  9. RESURFACE ALL TRENCH WITHIN PAVED AREA TO MEET L.A. COUNTY ROAD DEPT. OR CALIF. STATE HIGHWAY REQUIREMENTS IN ACCORDANCE WITH PERMITS.
  10. DISCHARGE FOUR FEET OF SEWER AT POINTS OF INTERFERENCE WITH POLES, OR WHEN COVER IS LESS THAN FOUR FEET, PER S-10-176 CASE III.
  11. HOUSE LATERALS TO BE CONSTRUCTED WITH INVERTS AT PROPERTY LINE 6 FEET BELOW CURB GRADE EXCEPT AS NOTED.
  12. ALL STRUCTURES SHALL BE BRICK SEWER STRUCTURES, S-10-104.
  13. FOR ALLOWABLE LEAKAGE TEST USE FORMULA NO. 1, SPECS. SEC. 54.
  14. MANHOLE TOPS IN UNIMPROVED RIGHTS-OF-WAY TO BE SIX INCHES ABOVE FINISHED GRADE.
  15. THE CONTRACTOR SHALL NOTIFY THE CONSTRUCTION DIVISION BY TELEPHONE, MADISON 9-4747 EXT. 1831 AT LEAST TWENTY-FOUR HOURS BEFORE STARTING ANY WORK UNDER THIS CONTRACT.
  16. THE CONTRACTOR SHALL MAINTAIN HIMSELF OF ALL SUBSTRUCTURES AND SHALL BE RESPONSIBLE FOR THEIR LOCATION AND MAINTENANCE.
  17. NO CONSTRUCTION SHALL BE PERMITTED IN FILLED AREAS UNLESS ACCEPTABLE CERTIFICATION IS SUBMITTED TO THE CONSTRUCTION DIVISION OF THE COUNTY ENGINEER'S DEPT. THAT CONSTRUCTION IS GREATER THAN 50%.
  18. IF CONSTRUCTION IS GREATER THAN 50%, CRUSHING OR SPECIAL P.H. SANDS ARE NOT REQUIRED UNLESS COUNTY ENGINEER MUST BE NOTIFIED AND CONSENT OBTAINED FOR ALL JOINTS IN FILLED AREAS.
  19. IF CONSTRUCTION IS LESS THAN 50%, THE SEWER MUST BE GRADED AS SHOWN ON PLANS (PER S-10-156).
  20. STANDARD SPECIFICATIONS DATED JAN. 1, 1960, APPLY IN THE CONSTRUCTION OF THIS PROJECT.

**NO CHARGE FOR CONNECTIONS**  
*R. King*

PROFILE ALIGNMENT AND GRADE OF **P.C. 5456**  
**SANITARY SEWERS PAGE 1**  
 TO BE CONSTRUCTED IN **J.N. 0352.98**

**TRACT No. 24959**  
**PRIVATE CONTRACT NO. 5456**

W.S. 34  
 3 SHEETS: 5 PAGES  
 SCALE: VERT. 1"=4' FEB. 1960  
 HORIZ. 1"=40'  
 PREPARED IN THE OFFICES OF

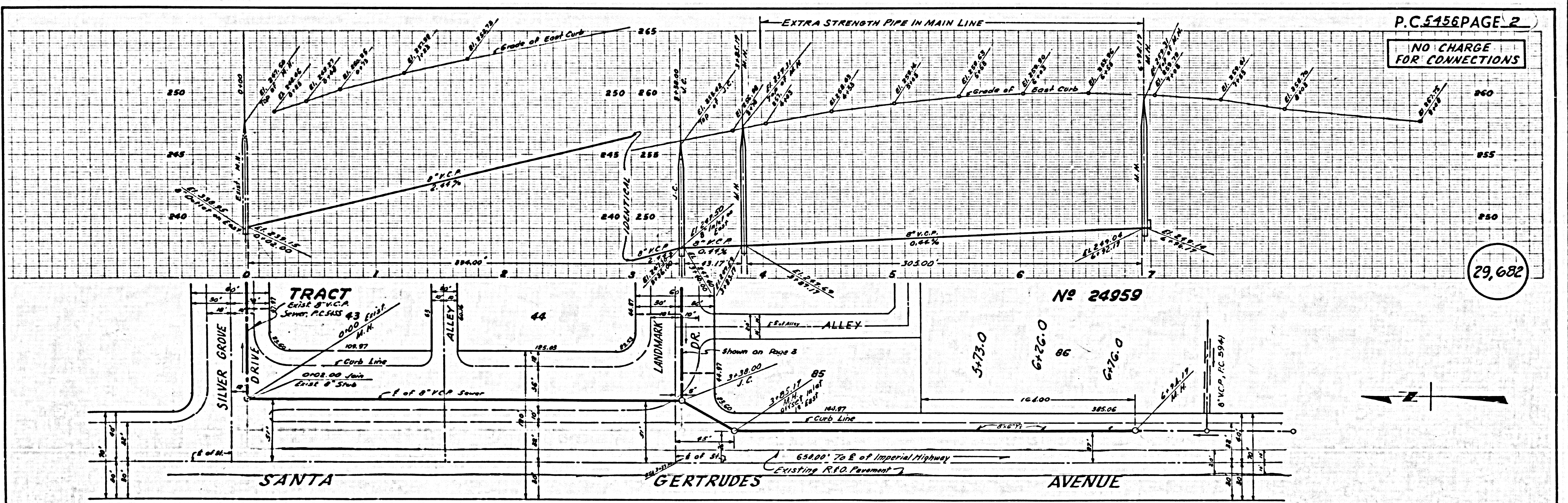
**McINTIRE & QUIROS INC.**  
 BY: *Alan McIntire* 1/4/60  
 REG. C. E. NO. 3548

FOR LEGEND SEE PLAN NO. S-A-64

**NOTE:**  
 GRADES TO WHICH THIS IMPROVEMENT IS TO BE CONSTRUCTED ARE SHOWN ON PLANS AND PROFILES. GRADE POINTS FOR TOP OF CURBS, CENTER LINE OF STREETS, OR CENTER LINE OF ALLEYS ARE SHOWN BY CIRCLES ON PROFILES. AT ALL POINTS BETWEEN DESIGNATED POINTS THE GRADE SHALL BE ESTABLISHED SO AS TO CONFORM TO A STRAIGHT LINE DRAWN BETWEEN SAID DESIGNATED POINTS.  
 ELEVATIONS ARE IN FEET ABOVE U.S.C. & G.S. SEA LEVEL DATUM OF 1929.  
 THIS DRAWING AND THE DATA HEREON ARE HEREBY MADE A PART OF THE SPECIFICATIONS.  
 WORK SHALL BE CONSTRUCTED ACCORDING TO SPECIFICATIONS ON FILE IN THE OFFICE OF THE COUNTY ENGINEER AND SHALL BE PROSECUTED ONLY IN THE PRESENCE OF THE COUNTY ENGINEER.  
 BEFORE WORK CAN BE STARTED, THE CONTRACTOR MUST OBTAIN A PERMIT TO RELOCATE IN COUNTY STREETS FROM THE L.A. COUNTY ROAD DEPT., DISTRICT OFFICE NO. 9 AND PAY A FEE WITH THE COUNTY ENGINEER, ROOM 24 FAN AMERICAN BUILDING, 223 SO. BROADWAY SUFFICIENT TO COVER THE COST OF CONSTRUCTION INSPECTION AND RECORD PLANS.  
 APPROVAL OF THIS PLAN BY THE COUNTY OF LOS ANGELES DOES NOT CONSTITUTE A REPRESENTATION AS TO THE ACCURACY OF THE LOCATION OF OR THE EXISTENCE OR NON-EXISTENCE OF ANY UNDERGROUND UTILITY PIPE, OR STRUCTURE WITHIN THE LIMITS OF THIS PROJECT. THIS NOTE APPLIES TO ALL PAGES.  
 IF WORK IS TO BE DONE IN A STATE HIGHWAY, A PERMIT MUST BE OBTAINED FROM THE STATE OF CALIFORNIA, DIVISION OF HIGHWAYS, 120 SOUTH SHAWNEE STREET.

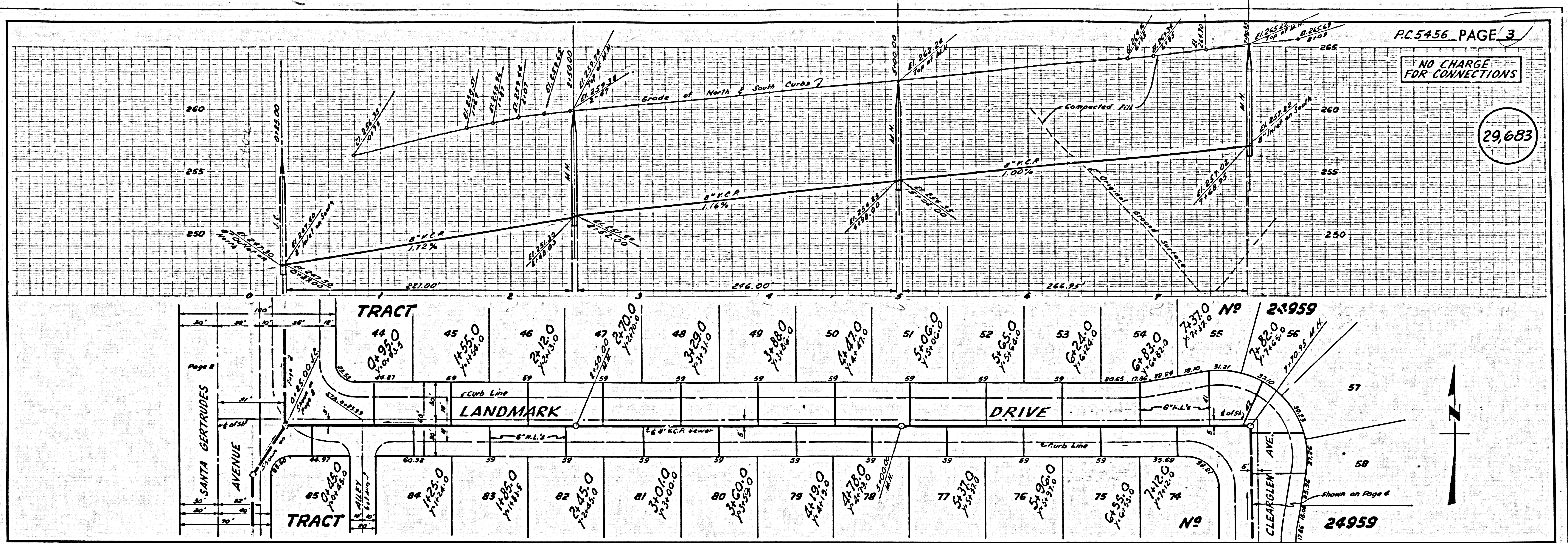
**COUNTY OF LOS ANGELES, CALIFORNIA**  
 APPROVED, JOHN A. LAMBE, COUNTY ENGINEER APPROVED, C.A. COMPTON, CHIEF ENGINEER  
 BY: *John A. Lambe* ASSISTANT SANITATION ENGINEER BY: *C.A. Compton* OFFICE ENGINEER  
 CHECKED BY: *SK. Onda* 8-5-60  
 OFFICE OF COUNTY ENGINEER, REG. C. E. NO. 3446

Submitted By: *John L. Estlin* 7-13-60  
 Los Cerritos Regional Engineer, Reg. C.E. 3871



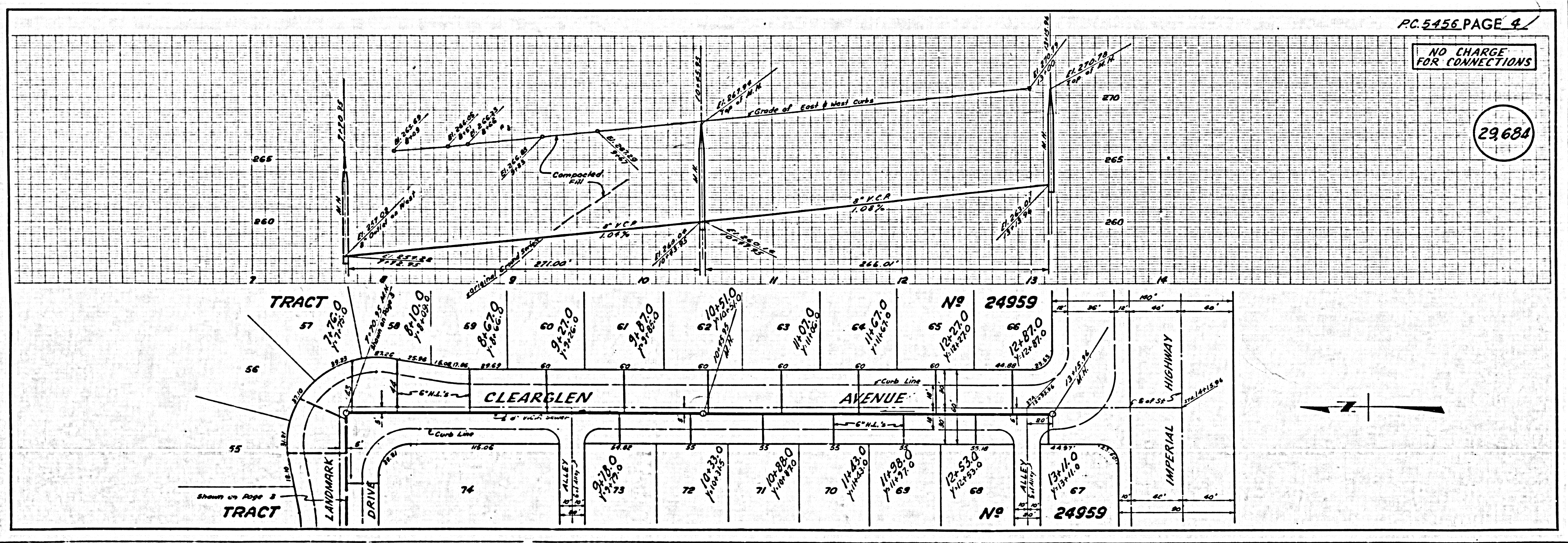
NO CHARGE FOR CONNECTIONS

29,683



NO CHARGE FOR CONNECTIONS

29,684



NO CHARGE FOR CONNECTIONS

29,685

