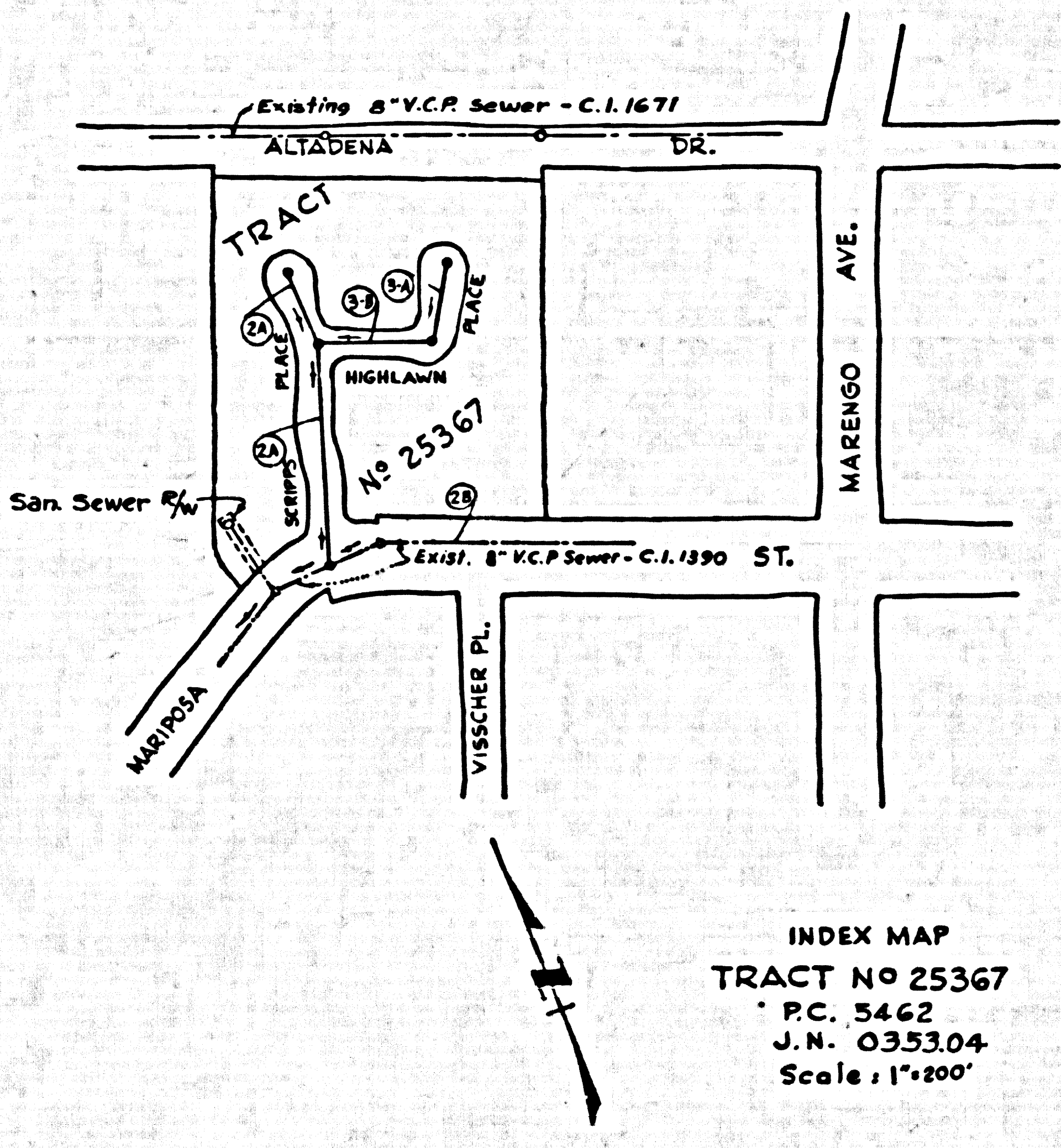


ALTADENA BLDG. DIST. NO. 3

PROFILE ALIGNMENT AND GRADE OF
SANITARY SEWERS PAGE 1
 TO BE CONSTRUCTED IN
TRACT No 25367 (29385)
 PRIVATE CONTRACT NO. 5462

B.M. 24-23A - S.W. COR. ALTADENA DR. AND MARENGO AVE. BOAT SPIKE IN LEAD IN CONC. HEADWALL
 ELEV. 1340.921 F.S. 1387-27



INDEX MAP
 TRACT No 25367
 P.C. 5462
 J.N. 0353.04
 Scale: 1"=200'

- NOTES:
1. PROVIDE STAKES ON THE PROPERTY LINE OR PROPERTY LINES PROCEEDED AT RIGHT ANGLES TO THE SEWER LINE AT THE CENTER LINE OF EACH MANHOLE.
 2. NO REPRESENTATIVE OF THE COUNTY ENGINEER WILL SURVEY OR LAY OUT ANY PORTION OF THE WORK.
 3. THE OWNER OR HIS AUTHORIZED REPRESENTATIVE SHALL FURNISH THE COUNTY ENGINEER WITH GRADE SHEETS AND STATIONING FOR ALL HOUSE LATERALS AND Y BRANCHES AND SHALL PROVIDE STAKES FOR THEM AT THEIR PROPER LOCATIONS WITH STATIONING PLAINLY MARKED. ANY CHANGE IN LOCATION SHALL BE REQUESTED IN WRITING BY THE OWNER OR HIS REPRESENTATIVE.
 4. THE PRIVATE ENGINEER SHALL FURNISH THE HOUSE LATERAL DEPTH AT THE PROPERTY LINE BELOW THE TOP OF CURB ELEVATION FOR EACH HOUSE LATERAL ON THE GRADE SHEET.
 5. NO REVISIONS SHALL BE MADE IN THESE PLANS WITHOUT THE APPROVAL OF THE COUNTY ENGINEER.
 6. USE STANDARD MANHOLE FRAMES AND COVERS, S-117.
 7. USE STANDARD STRENGTH PPC EXCEPT AS NOTED.
 8. USE CONCRETE MORTAR OR "WEDGALOC" OR "SPES-SEAL" FOR ALL V.C.P. JOINTS PER SPEC. SEC. 16 & 17.
 9. RESURFACE ALL TRENCH WITHIN PAVED AREA TO MEET L.A. COUNTY ROAD DEPT. OR CALIF. STATE HIGHWAY REQUIREMENTS IN ACCORDANCE WITH PERMITS.
 10. ENCASE FOUR FEET OF SEWER AT POINTS OF INTERFERENCE WITH POLES, CASE III, S-117.
 11. HOUSE LATERALS TO BE CONSTRUCTED WITH BRICKS AT PROPERTY LINE 6 FEET BELOW CURB GRADE EXCEPT AS NOTED.
 12. ALL STRUCTURES SHALL BE BRICK SEWER STRUCTURES, S-104.
 13. FOR ALLOWABLE LEAKAGE TEST USE FORMULA NO. 1, SPEC. SEC. 14.
 14. THE CONTRACTOR SHALL NOTIFY THE DESIGNER BY TELEPHONE, MARSHON 9-487, 24 HOURS BEFORE STARTING ANY WORK UNDER THIS CONTRACT.
 15. STANDARD SPECIFICATIONS DATED JANUARY 1, 1960 APPLY IN THE CONSTRUCTION OF THIS PROJECT.

NO CHARGE FOR CONNECTIONS.

N.F. Brander

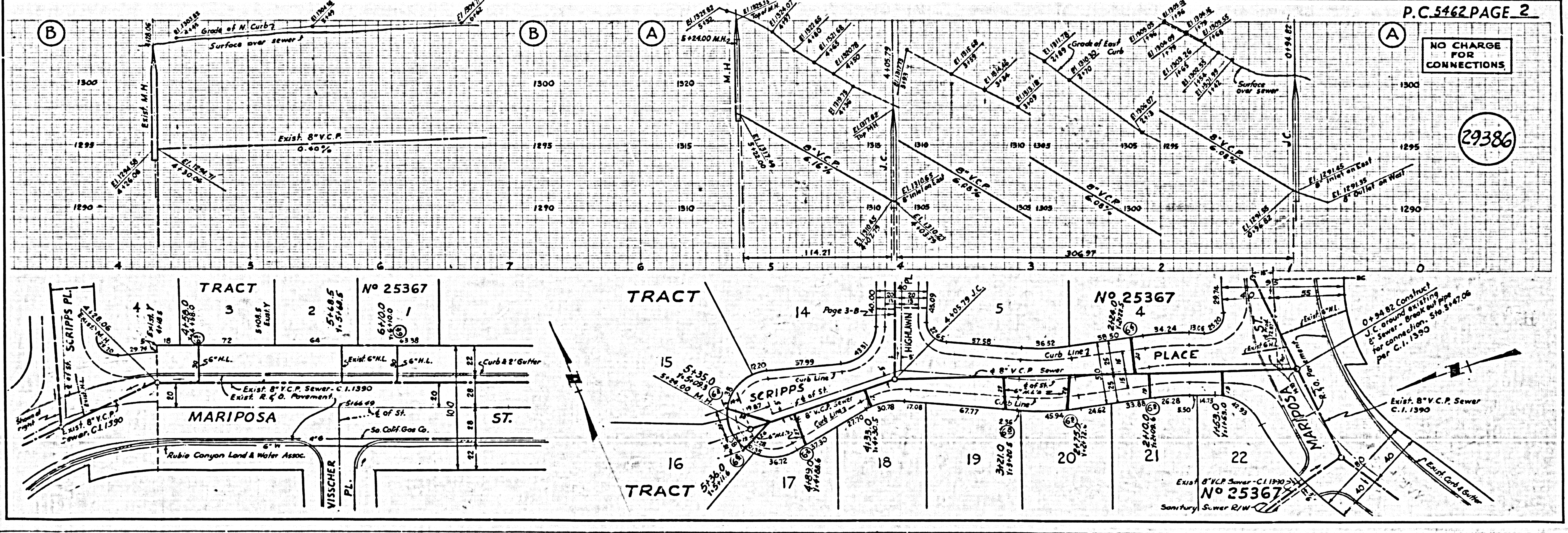
W.S. 88
 2 SHEETS, 3 PAGES
 SCALE: HORIZ. 1"=40' VERT. 1"=4'
 FEBRUARY, 1960
 PREPARED IN THE OFFICES OF
BARNETT, HOPEN, SMITH & SALIT
 CIVIL ENGINEERS AND LAND SURVEYORS
 BY: *Harold A. Barnett*
 REG. C. E. NO. 1276

FOR LEGEND SEE PLAN NO. S-A-44

NOTE:
 GRADES TO WHICH THIS IMPROVEMENT IS TO BE CONSTRUCTED AND SHOWN ON PLANS AND PROFILE GRADE POINTS FOR TOP OF CURB, CENTER LINE OF STREETS OR CENTER LINE OF ALLEYS ARE SHOWN BY CIRCLES ON PROFILES. AT ALL POINTS BETWEEN DESIGNATED POINTS THE GRADE SHALL BE ESTABLISHED SO AS TO CONFORM TO A STRAIGHT LINE BEYOND BETWEEN SAID DESIGNATED POINTS.
 ELEVATIONS ARE IN FEET ABOVE U.S.C. & G.S. SEA LEVEL DATUM OF 1929.
 THIS DRAWING AND THE DATA HEREON ARE HEREBY MADE A PART OF THE SPECIFICATIONS.
 WORK SHALL BE CONSTRUCTED ACCORDING TO SPECIFICATIONS ON FILE IN THE OFFICE OF THE COUNTY ENGINEER AND SHALL BE PROSECUTED ONLY IN THE PRESENCE OF THE COUNTY ENGINEER.
 BEFORE WORK CAN BE STARTED THE CONTRACTOR MUST OBTAIN A PERMIT TO EXCAVATE IN COUNTY STREETS FROM THE L.A. COUNTY ROAD DEPT., DISTRICT OFFICE NO. 32 AND PAY FEE TO THE COUNTY ENGINEER ROOM 124 SAN ANTONIO BUILDING, 252 S.D. BROADWAY SUFFICIENT TO COVER THE COST OF CONSTRUCTION INSPECTION AND RECORD PLANS.
 ORIGINAL OF THIS PLAN BY THE COUNTY OF LOS ANGELES DOES NOT CONSTITUTE A REPRESENTATION AS TO THE ACCURACY OF THE LOCATION OF OR THE EXISTENCE OR NON-EXISTENCE OF ANY UNDERGROUND UTILITY PIPE OR STRUCTURE WITHIN THE LIMITS OF THIS PROJECT. THIS NOTE APPLIES TO ALL PAGES.
 IF WORK IS TO BE DONE IN A STATE HIGHWAY, A PERMIT MUST BE OBTAINED FROM THE STATE OF CALIFORNIA DIVISION OF HIGHWAYS, 128 SOUTH SPRING STREET.

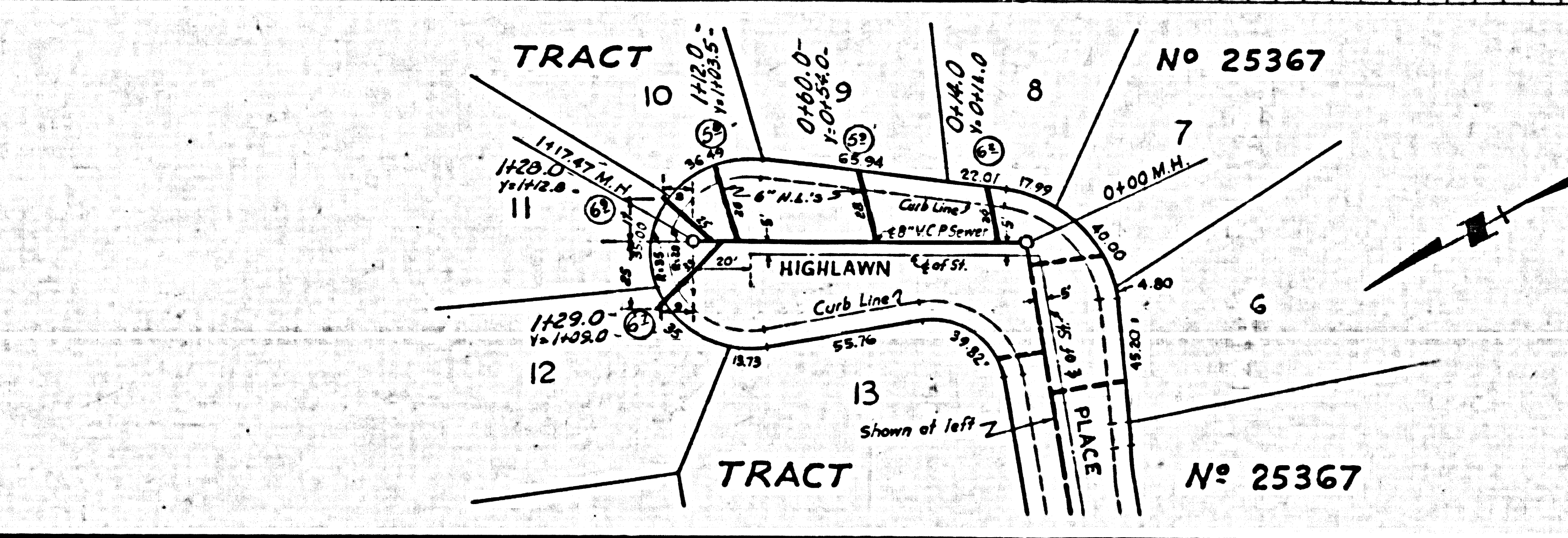
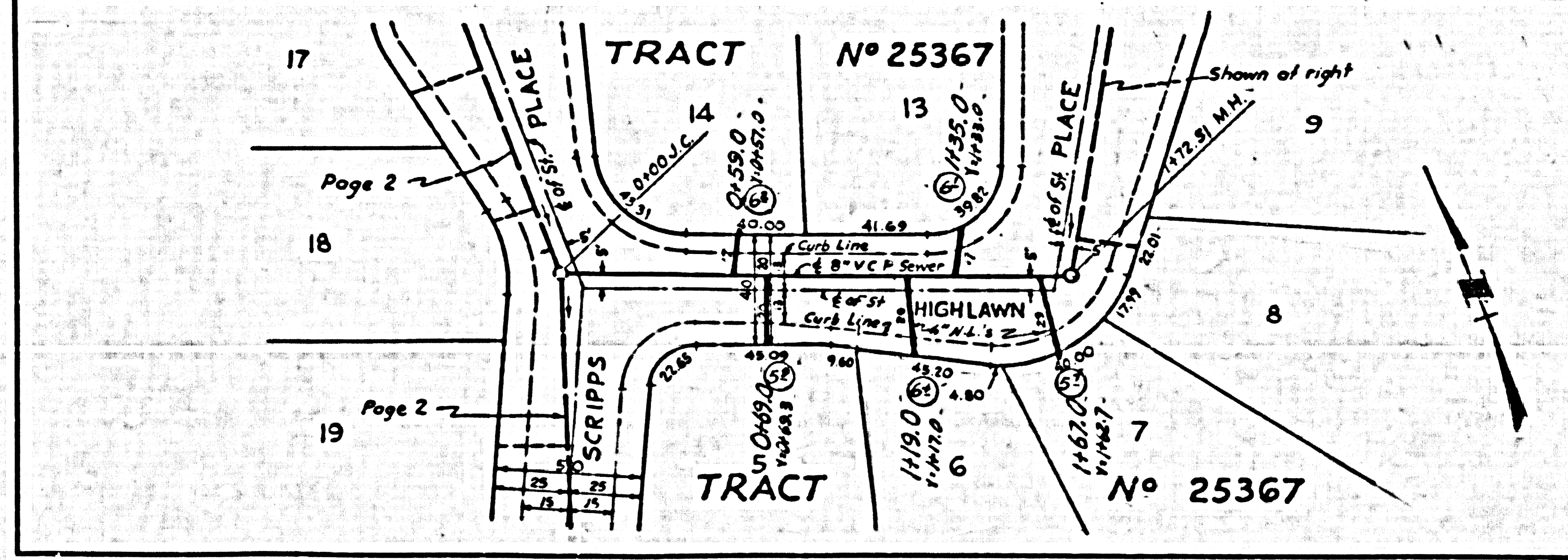
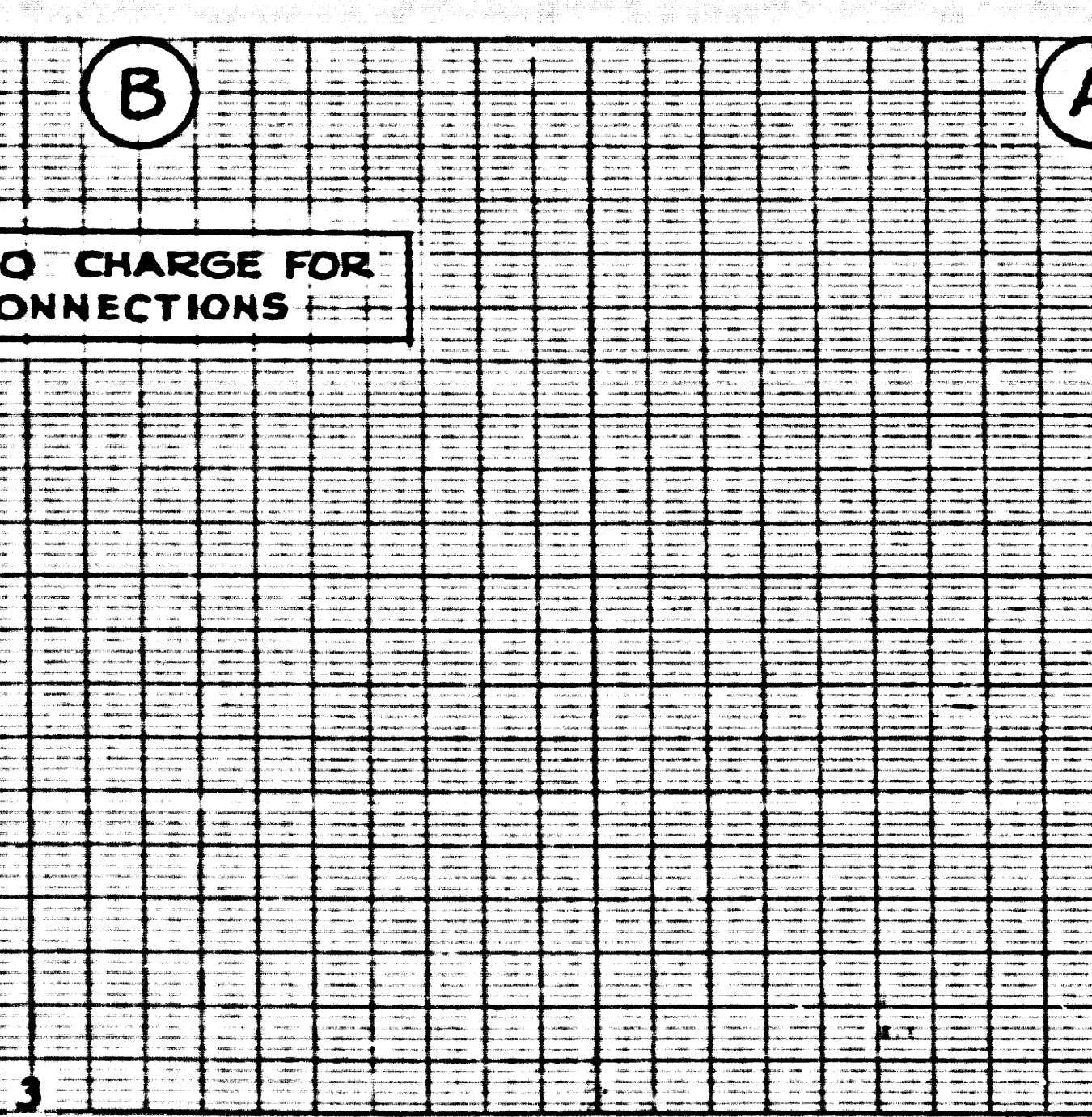
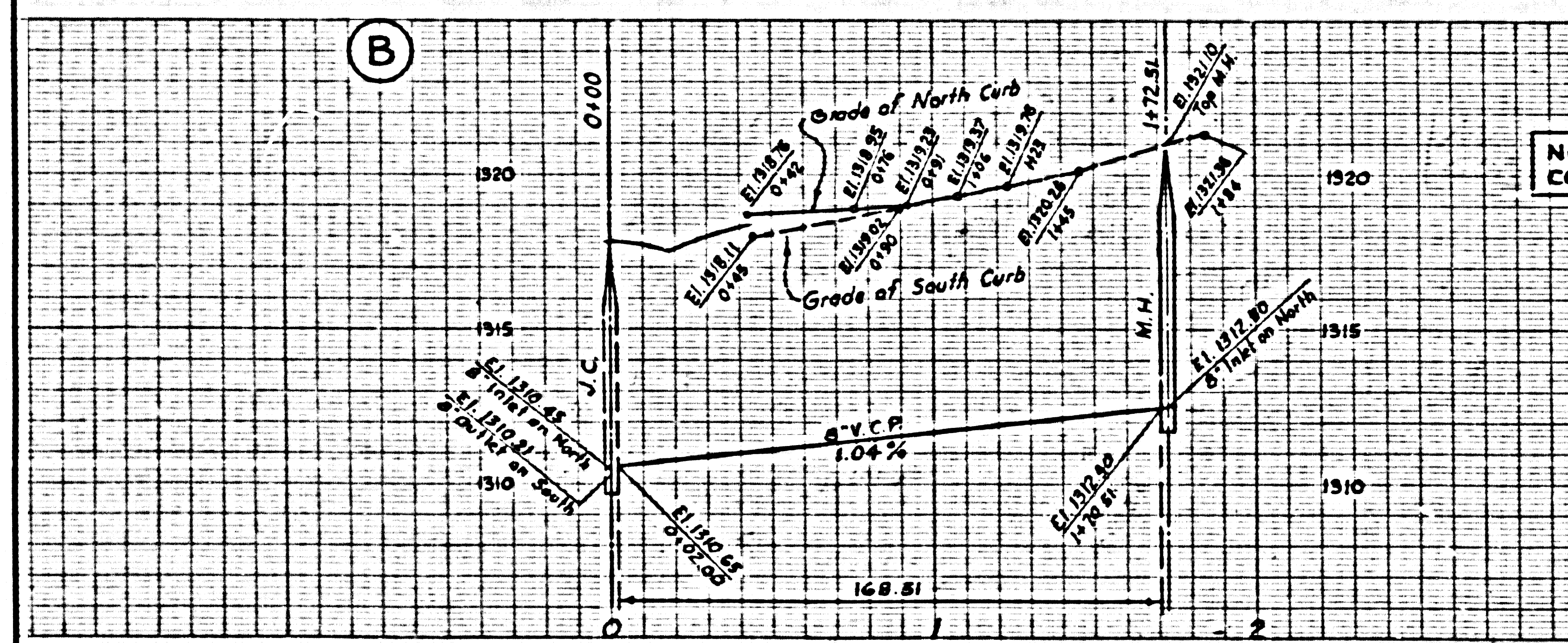
COUNTY OF LOS ANGELES, CALIFORNIA
 APPROVED, JOHN A. LANBE, COUNTY ENGINEER APPROVED, C.R. COMPTON, CHIEF ENGINEER
 CO. SAN. DIST. NO. 17
 BY: *C.E. Brundage* DISTRICT SANITATION ENGINEER BY: *W.R. Thompson* OFFICE ENGINEER
 CHECKED BY: *W.C. Onda* 5-26-60
 OFFICE OF COUNTY ENGINEER, REG. C. E. NO. 9406

SUBMITTED BY *N.F. Brander*
 SAN GABRIEL VALLEY REGIONAL ENGINEER



NO CHARGE FOR CONNECTIONS.

(29386)



29387