

SAN DIMAS BLDG. DIST. NO. 10

PROFILE ALIGNMENT AND GRADE OF P.C. 5468
 SANITARY SEWERS PAGE 1
 TO BE CONSTRUCTED IN I.N. 0353.09
 ARROW HIGHWAY

B.M. S.G. 251 L.B. 147 p. 4
 1.87 Top of 12" conc. pipe riser valve
 2.185 So. of Arrow Hwy. Approx 1000' E
 of Grand Ave. 715' N. of West Ave. 4233
 ELEV. 669.15

NOTES:

1. PROVIDE STAKES ON THE PROPERTY LINE OR PROPERTY LINES PRODUCED AT RIGHT ANGLE TO THE SEWER LINE AT THE CENTER LINE OF EACH MANHOLE.
2. NO REPRESENTATIVE OF THE COUNTY ENGINEER WILL SURVEY OR LAY OUT ANY PORTION OF THE WORK.
3. THE OWNER OR HIS AUTHORIZED REPRESENTATIVE SHALL FURNISH THE COUNTY ENGINEER WITH GRADE SHEETS AND STATIONING FOR ALL HOUSE LATERALS AND Y BRANCHES AND SHALL PROVIDE STAKES FOR THEM AT THEIR PROPER LOCATIONS WITH STATIONING PLAINLY MARKED. ANY CHANGE IN LOCATION SHALL BE REQUESTED IN WRITING BY THE OWNER OR HIS REPRESENTATIVE.
4. THE PRIVATE ENGINEER SHALL FURNISH THE HOUSE LATERAL DEPTH AT THE PROPERTY LINE BELOW THE TOP OF CURB.
5. SEPARATION FOR SANITARY HOUSE LATERAL ON THE GRADE SHEET.
6. NO REVISIONS SHALL BE MADE IN THESE PLANS WITHOUT THE APPROVAL OF THE COUNTY ENGINEER.
7. USE STANDARD MANHOLE FRAMES AND COVERS, S-117.
8. USE STANDARD STRENGTH PIPE S-117.
9. USE CEMENT MORTAR OR "WEDGE-LOCK" OR "SPEED-SEAL" FOR ALL V.C.P. JOINTS PER SPEC'S, SECS. 11 & 12.
10. RESURFACE ALL TRENCH WITHIN PAVED AREA TO MEET L.A. COUNTY ROAD DEPT. OR CALIF. STATE HIGHWAY REQUIREMENTS IN ACCORDANCE WITH PERMITS.
11. ENCASE FOUR FEET OF SEWER AT POINTS OF INTERFERENCE WITH POLES, CASE III, S-172.
12. HOUSE LATERALS TO BE CONSTRUCTED WITH INVERTS AT PROPERTY LINE 6" BELOW CURB GRADE EXCEPT AS NOTED.
13. ALL STRUCTURES SHALL BE BRICK SEWER STRUCTURES, S-104.
14. FOR ALLOWABLE LEAKAGE TEST USE FORMULA NO. 1, SPEC'S, SEC. 14.
15. MANHOLE TOPS IN UNIMPROVED RIGHTS-OF-WAY TO BE SIX INCHES ABOVE FINISHED GRADE.
16. THE CONTRACTOR SHALL NOTIFY THE CONSTRUCTION & STORM DRAIN DIVISION BY TELEPHONE, MADISON 9-470, EXT. 342, AT LEAST TWENTY-FOUR HOURS BEFORE STARTING ANY WORK UNDER THIS CONTRACT.
17. STANDARD SPECIFICATIONS DATED JANUARY 1, 1960 SHALL APPLY IN THE CONSTRUCTION OF THIS PROJECT.

PRIVATE CONTRACT NO. 5468

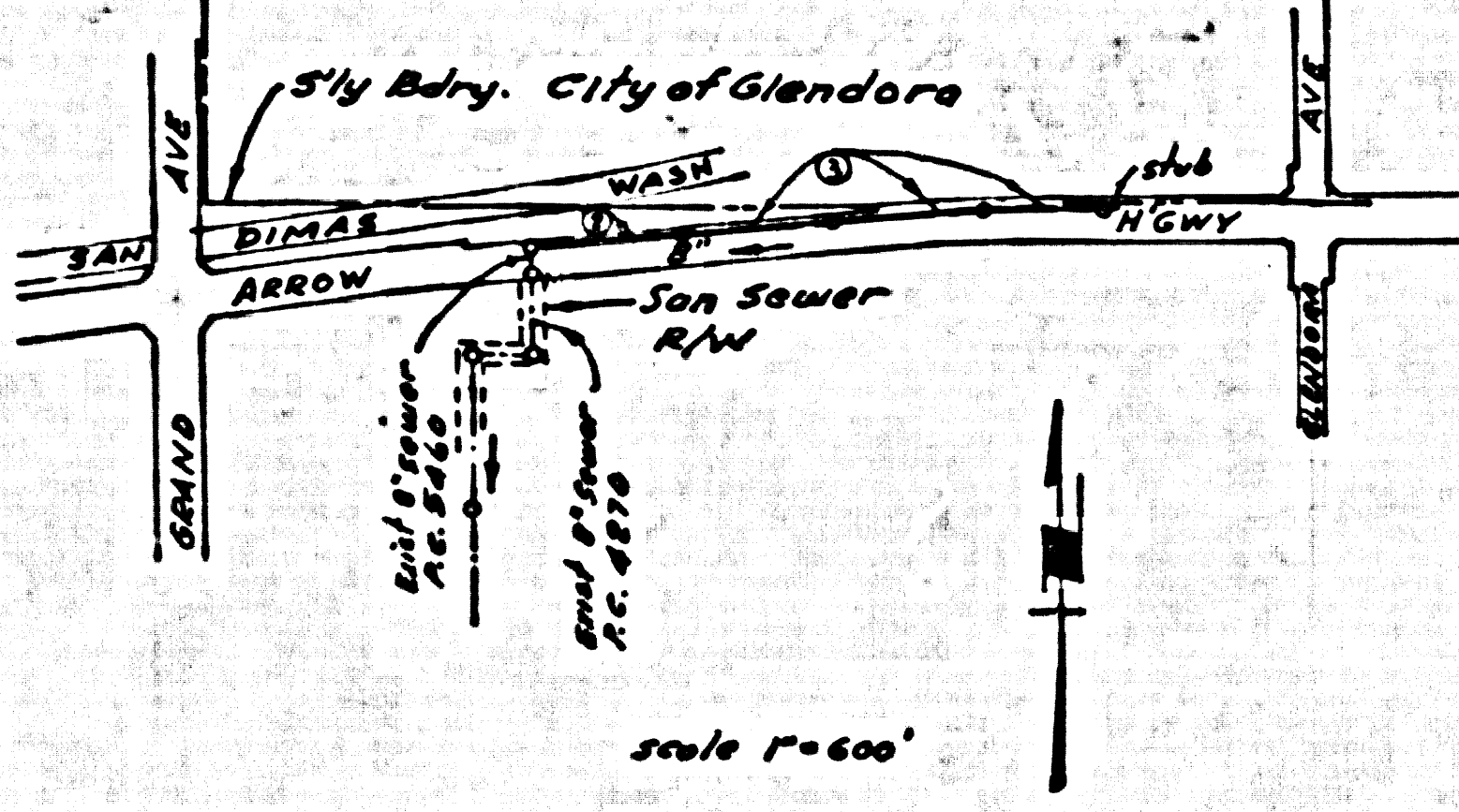
W.S. 48
 2 SHEETS; 3 PAGES
 SCALE: VERT. 1" = 4'
 HORZ. 1" = 40' MARCH, 1960
 PREPARED IN THE OFFICES OF
 DUTCH HOLZHAUER & ASSOC.

28,984

By: *E. C. Hoffman*
 REG. C. E. NO. 10212
 FOR LEGEND SEE PLAN NO. S-A-44

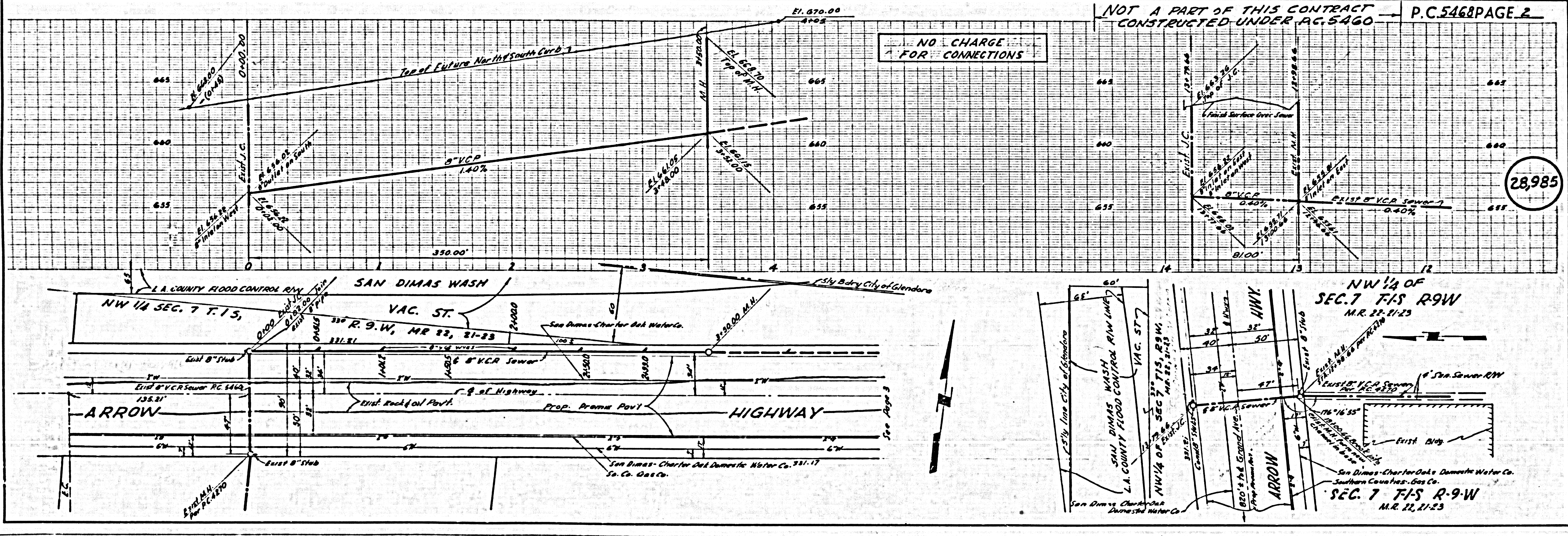
NOTES:
 GRADES TO WHICH THIS IMPROVEMENT IS TO BE CONSTRUCTED ARE SHOWN ON PLANS AND PROFILES. GRADE POINTS FOR TOP OF CURBS, CENTER LINE OF STREETS OR CENTER LINE OF ALLEYS ARE SHOWN IN CIRCLES ON PROFILES. AT ALL POINTS BETWEEN DESIGNATED POINTS THE GRADE SHALL BE ESTABLISHED SO AS TO CONFORM TO A STRAIGHT LINE DRAWN BETWEEN SAID DESIGNATED POINTS.
 THIS DRAWING AND THE DATA HEREON ARE HEREBY MADE A PART OF THE SPECIFICATIONS.
 BEFORE WORK CAN BE STARTED, THE CONTRACTOR MUST OBTAIN A PERMIT TO ENCASE IN COUNTY STREETS FROM THE L.A. COUNTY ROAD DEPT., DISTRICT OFFICE NO. 1 AND CITY ENGINEER FROM THE COUNTY ENGINEER ROOM 327 SAN AMERICAN BUILDING, 253 SO. BROADWAY SUFFICIENT TO COVER THE COST OF CONSTRUCTION INSPECTION AND RECORD PLANS.
 APPROVAL OF THIS PLAN BY THE COUNTY OF LOS ANGELES DOES NOT CONSTITUTE A REPRESENTATION AS TO THE ACCURACY OF OR THE EXISTENCE OR NON-EXISTENCE OF ANY UNDERGROUND UTILITY PIPE, OR STRUCTURE WITHIN THE LIMITS OF THIS PROJECT. THIS NOTE APPLIES TO ALL PAGES.
 IF WORK IS TO BE DONE IN A STATE HIGHWAY, A PERMIT MUST BE OBTAINED FROM THE STATE OF CALIFORNIA, DIVISION OF HIGHWAYS, 120 SOUTH SPRING STREET.

COUNTY OF LOS ANGELES, CALIFORNIA
 APPROVED, JOHN A. LAMBIE, COUNTY ENGINEER APPROVED, C.R. CONANT, CHIEF ENGINEER
 CO. SAN. DIST. NO. 22
 BY: *E. C. Hoffman* BY: *E. C. Hoffman*
 SANITATION ENGINEER OFFICE ENGINEER
 CHECKED BY: *S. K. Under* 3-18-60
 OFFICE OF COUNTY ENGINEER, REG. C. E. NO. 3406



NO CHARGE FOR CONNECTIONS
 7-7-60

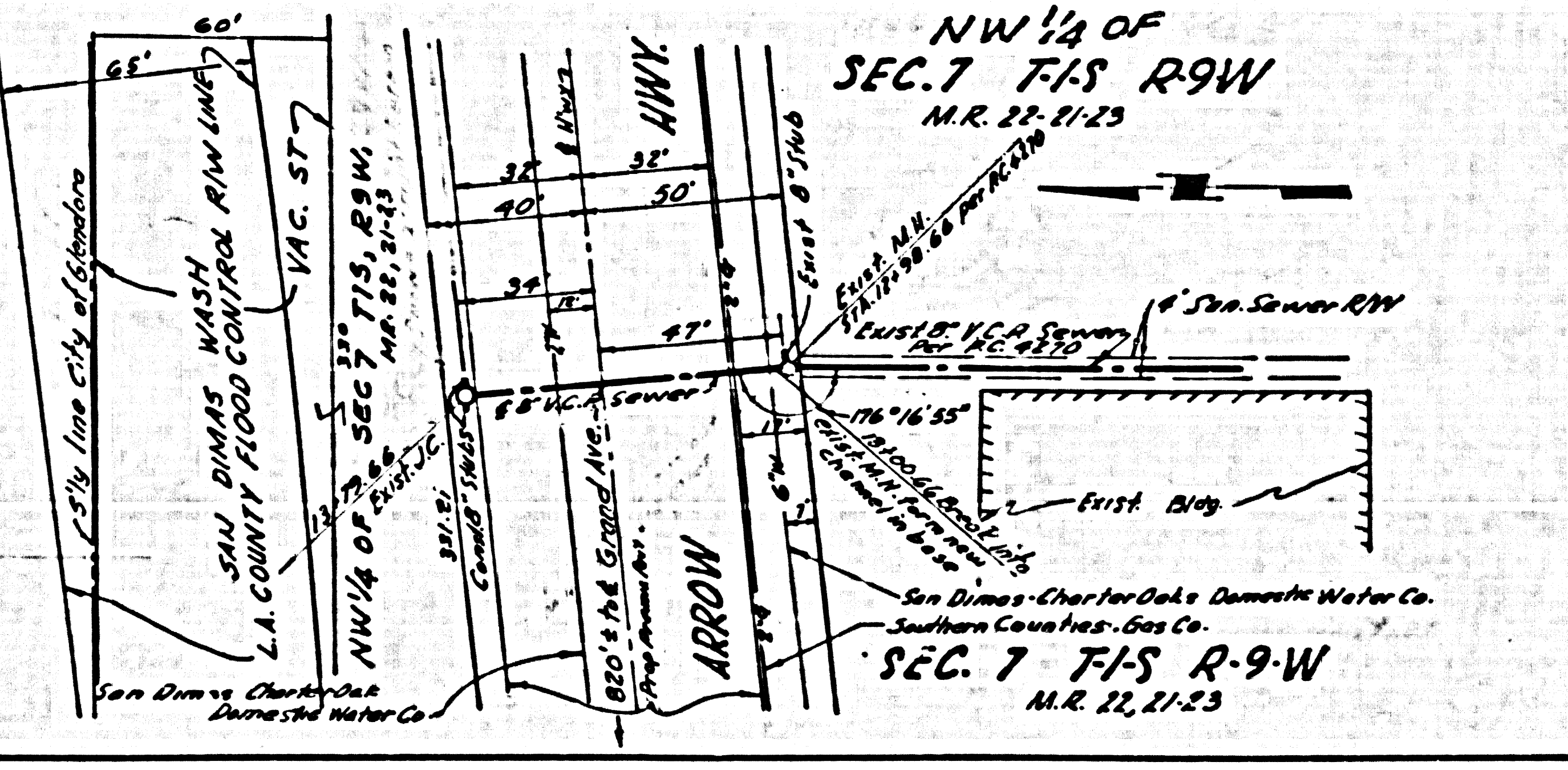
CITY OF GLENDORA
 APPROVED *Stanley Robinson*
 CITY ENGINEER 3-18-60

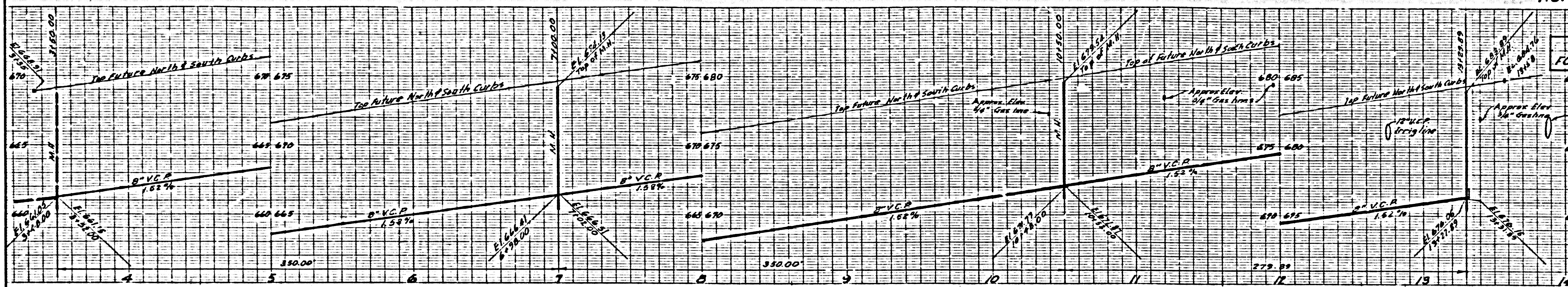


NO CHARGE FOR CONNECTIONS

NOT A PART OF THIS CONTRACT
 CONSTRUCTED UNDER P.C. 5460 P.C. 5468 PAGE 2

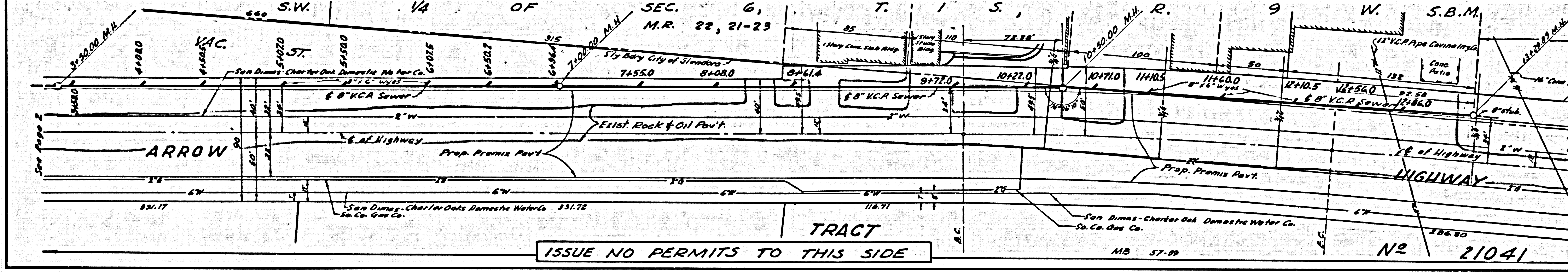
28,985





NO CHARGE FOR CONNECTIONS

28,986



ISSUE NO PERMITS MAIN LINE MUST BE EXTENDED

ISSUE NO PERMITS TO THIS SIDE

MB 57-89

No 21041

